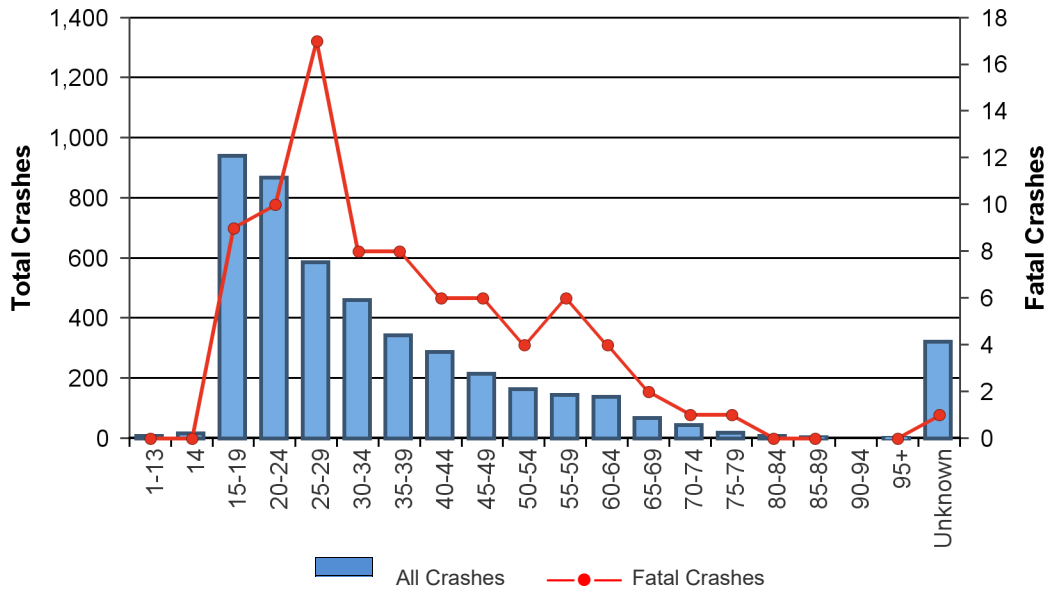


Speed Related Crashes by Age Group

Year	Crashes per Age Group		
	Total	Fatal	Injury
1-13	8	0	5
14	17	0	7
15-19	941	9	313
20-24	867	10	270
25-29	587	17	203
30-34	460	8	150
35-39	343	8	113
40-44	288	6	83
45-49	215	6	69
50-54	163	4	57
55-59	144	6	46
60-64	138	4	51
65-69	68	2	27
70-74	45	1	14
75-79	20	1	3
80-84	8	0	4
85-89	5	0	3
90-94	0	0	0
95+	2	0	1
Unknown	321	1	43
Total	4,599*	80*	1,447*

Speeding Drivers and Their Crashes by Age Group



* The crash totals do not reflect the sum of the columns above as multiple counting occurs when drivers of different age groups are involved in the same crash.

SPEED-RELATED CRASHES

Year	Crashes				People	
	Total	Fatal	Injury	PDO	Deaths	Injuries
2011	6,052	81	1,809	4,162	88	2,537
2012	4,638	87	1,594	2,957	95	2,397
2013	5,774	73	1,695	4,006	76	2,466
2014	5,970	80	1,678	4,212	92	2,435
2015	5,549	89	1,544	3,915	100	2,285
2016	4,875	66	1,491	3,316	72	2,140
2017	4,337	65	1,393	2,877	73	2,021
2018	5,809	66	1,609	4,134	73	2,241
2019	5,769	85	1,529	4,153	93	2,203
2020	4,599	80	1,447	3,071	88	2,071
Total	53,372	772	15,789	36,803	850	22,796

