

2020 Kansas Traffic Crash Facts

Pedestrians Involved in Crashes

Pedestrians				
Year	Total	Death	Injuries	Unharmd/Unknown
2011	461	13	433	15
2012	555	28	493	34
2013	465	27	397	41
2014	469	24	415	30
2015	438	24	377	37
2016	551	40	476	35
2017	497	34	423	40
2018	474	29	417	28
2019	462	18	401	43
2020	427	46	341	40
Total	4,799	283	4,173	343

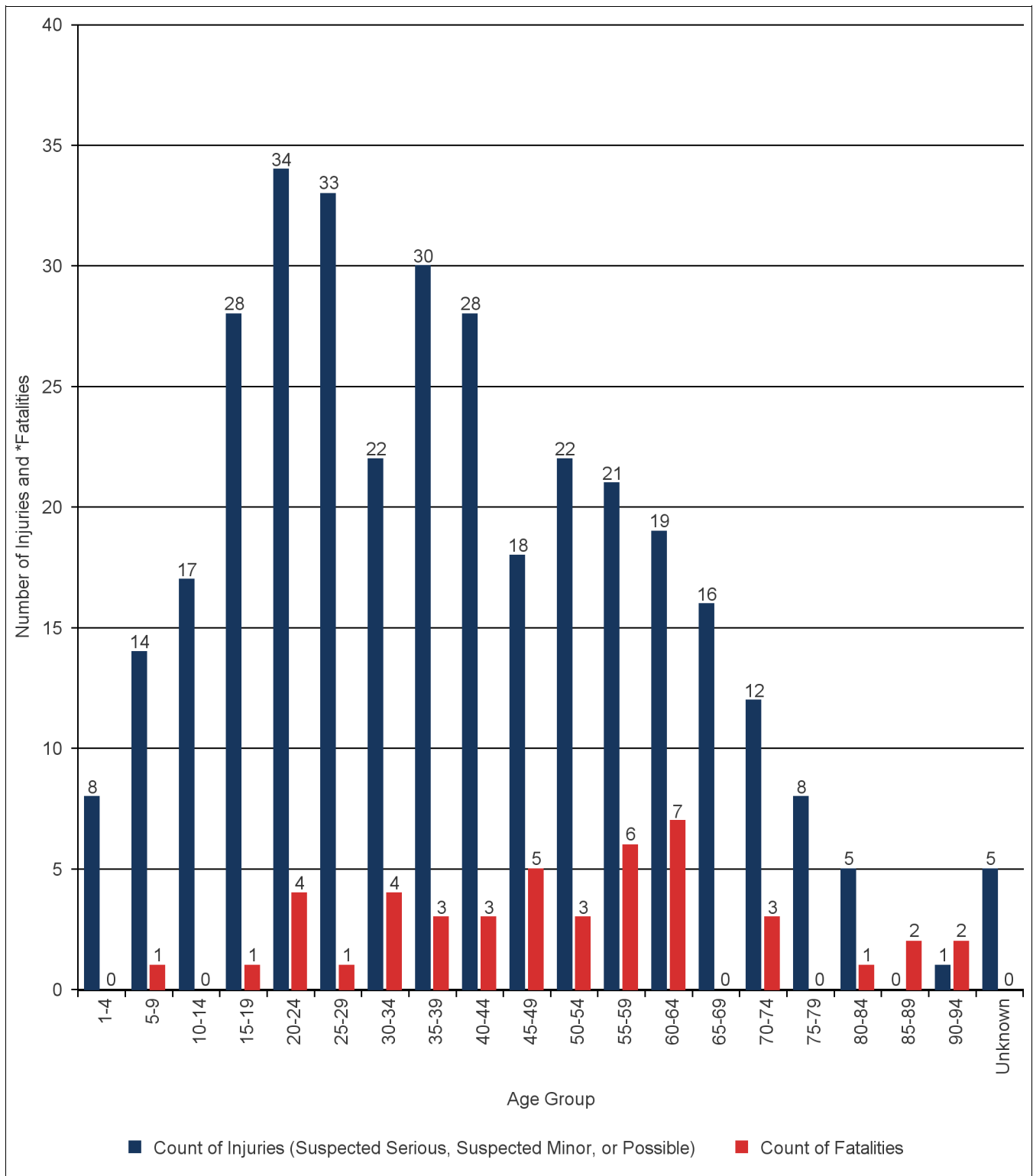
Pedal Cyclists				
Year	Total	Death	Injuries	Unharmd/Unknown
2011	331	2	313	16
2012	368	6	335	27
2013	365	6	333	26
2014	330	7	301	22
2015	346	3	321	22
2016	390	5	360	25
2017	353	5	312	36
2018	357	5	315	37
2019	348	8	316	24
2020	256	4	233	19
Total	3,444	51	3,139	254

Other*				
Year	Total	Death	Injuries	Unharmd/Unknown
2011	231	0	56	175
2012	197	4	44	149
2013	231	0	36	195
2014	259	0	49	210
2015	216	1	43	172
2016	209	3	43	163
2017	179	0	56	123
2018	184	0	44	140
2019	209	1	45	163
2020	195	0	40	155
Total	2,110	9	456	1,645

*Animal rider or occupants in an animal-drawn carriage, legally parked vehicle, machine, etc

2020 Kansas Traffic Crash Facts

Pedestrians Involved in Crashes by Age and Injury Severity



Pedal Cyclists Involved in Crashes by Age and Injury Severity

