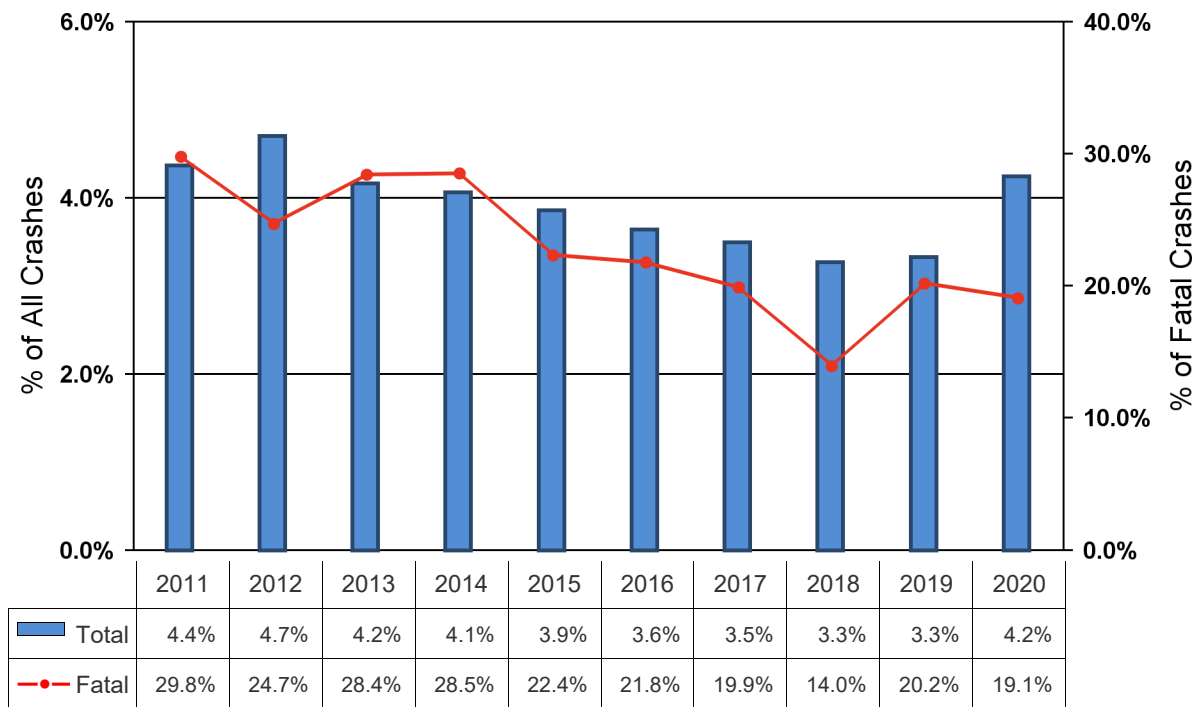


Alcohol Related Crashes

Type	Total	Alcohol-Related	% of All
Crashes			
All	52,469	2,226	4.2%
Fatal	382	73	19.1%
Injury	11,677	831	7.1%
PDO	40,400	1,322	3.3%
People			
All	110,131	3,830	3.5%
Deaths	426	85	20.0%
Injuries	15,997	1,177	7.4%
Unharmmed	92,830	2,568	2.8%

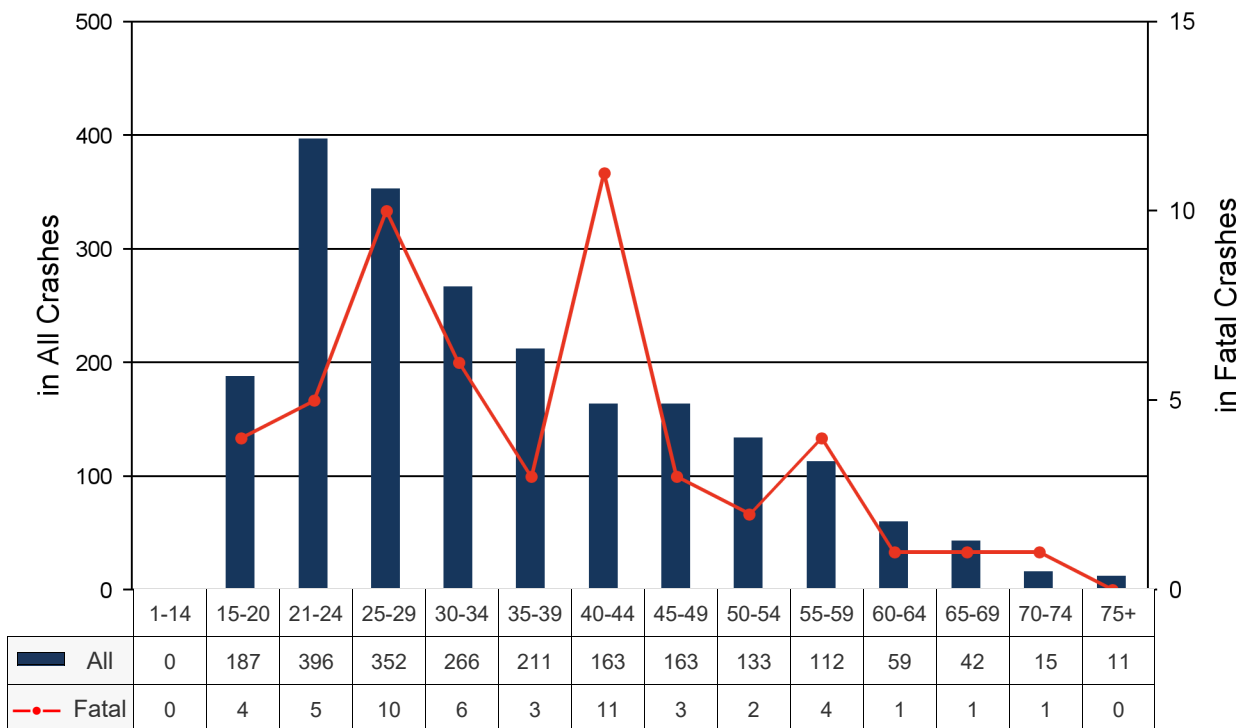
Alcohol-Related Crash History



2020 Kansas Traffic Crash Facts
Alcohol-Related Crashes
 By Driver Age

Alcohol-Related Driver Ages	Crashes				People	
	Total	Fatal	Injury	PDO	Deaths	Injured
1-14	0	0	0	0	0	0
1-20	224	3	81	140	8	114
15-20	187	4	69	114	5	94
21-24	396	5	153	238	5	215
25-29	352	10	130	212	11	187
30-34	266	6	92	168	6	119
35-39	211	3	85	123	4	123
40-44	163	11	59	93	12	77
45-49	163	3	74	86	3	99
50-54	133	2	46	85	2	60
55-59	112	4	33	75	4	36
60-64	59	1	23	35	3	30
65-69	42	1	13	28	1	14
70-74	15	1	6	8	2	7
75+	11	0	5	6	0	5
Unknown	20	0	4	16	0	5

Alcohol-Related Drivers by Age Group

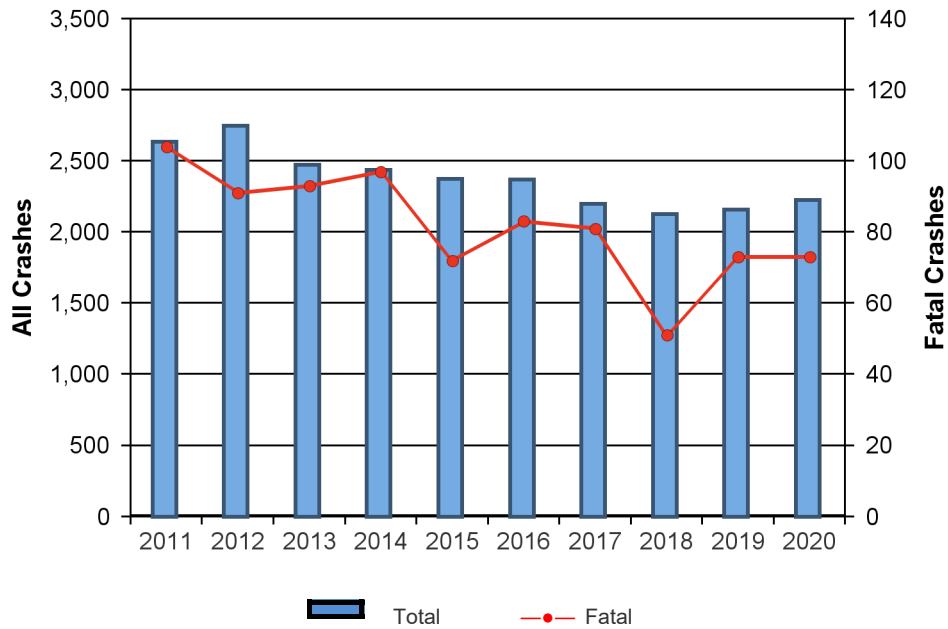


Note: More than one driver per age group can be involved in the same crash.

ALCOHOL-RELATED CRASHES

Year	Crashes				People	
	Total	Fatal	Injury	PDO	Deaths	Injuries
2011	2,636	104	1,114	1,418	114	1,580
2012	2,748	91	1,221	1,436	103	1,716
2013	2,471	93	1,017	1,361	95	1,368
2014	2,438	97	1,000	1,341	109	1,425
2015	2,373	72	949	1,352	77	1,336
2016	2,370	83	905	1,381	92	1,231
2017	2,200	81	814	1,304	90	1,133
2018	2,127	51	791	1,285	58	1,069
2019	2,159	73	812	1,272	81	1,152
2020	2,226	73	831	1,322	85	1,177
Total	23,748	818	9,454	13,472	904	13,187

Alcohol-Related Crash Summary



2020 Kansas Traffic Crash Facts

ALCOHOL-RELATED CRASHES

Involving Alcohol-Related Male Drivers

Year	Crashes				People	
	Total	Fatal	Injury	PDO	Deaths	Injuries
2011	2,128	92	936	1,100	74	868
2012	2,224	85	1,008	1,131	70	916
2013	1,992	83	865	1,044	67	784
2014	1,930	92	802	1,036	79	734
2015	1,918	64	778	1,076	48	704
2016	1,881	71	748	1,061	56	681
2017	1,732	75	659	997	62	608
2018	1,650	37	633	980	28	553
2019	1,696	66	654	974	54	594
2020	1,751	64	667	1,020	59	602
Total	18,902	729	7,750	10,419	597	7,044

Involving Alcohol-Related Female Drivers

Year	Crashes				People	
	Total	Fatal	Injury	PDO	Deaths	Injuries
2011	842	25	330	487	14	276
2012	844	14	370	460	8	301
2013	755	16	283	456	10	236
2014	791	19	333	439	10	286
2015	753	14	304	435	9	251
2016	787	23	292	472	17	258
2017	706	17	265	424	9	227
2018	718	19	273	426	17	240
2019	733	15	297	421	13	239
2020	753	21	296	436	7	260
Total	7,682	183	3,043	4,456	114	2,574

Note: There are instances where a female and a male driver were involved in the same crash causing multiple counting in the data above. In addition, drivers whose gender was unknown are excluded.