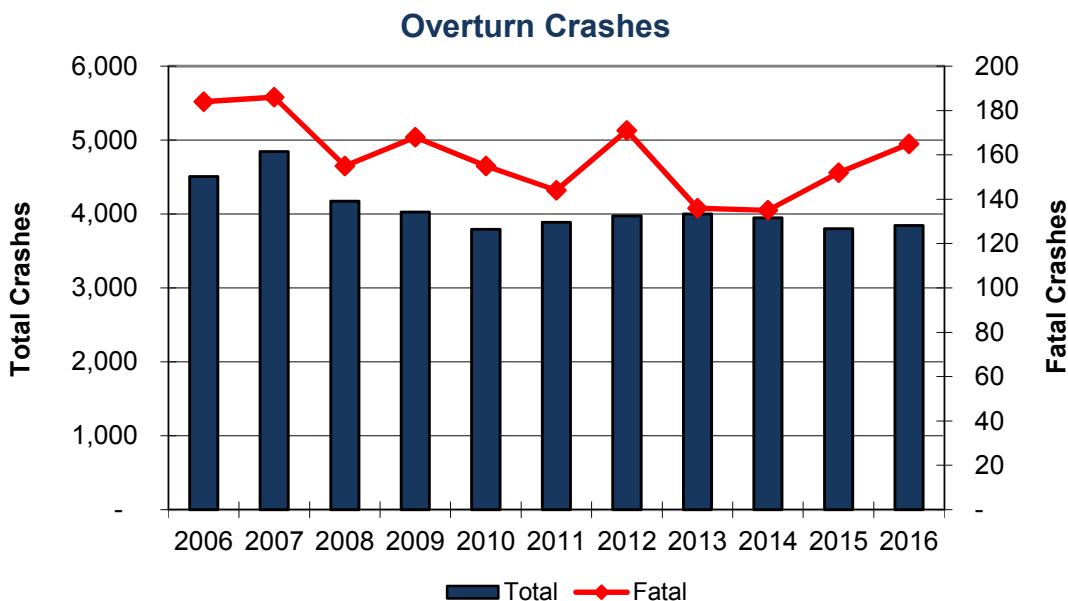


Vehicle Overturn Crashes

Year	Crashes				People	
	Total	Fatal	Injury	PDO	Deaths	Injuries
2006	4,505	184	2,781	1,540	204	4,034
2007	4,843	186	2,847	1,810	202	4,028
2008	4,173	155	2,550	1,468	165	3,613
2009	4,024	168	2,405	1,451	187	3,523
2010	3,793	155	2,258	1,380	176	3,221
2011	3,888	144	2,308	1,436	157	3,260
2012	3,974	171	2,511	1,292	193	3,522
2013	4,000	136	2,289	1,575	139	3,231
2014	3,947	135	2,312	1,500	162	3,183
2015	3,803	152	2,211	1,440	171	3,116
2016	3,844	165	2,285	1,394	184	3,128
Total	44,794	1,751	26,757	16,286	1,940	37,859



In 2016, 6.22% of all crashes and 43.3% of all fatal crashes involve vehicles overturning.