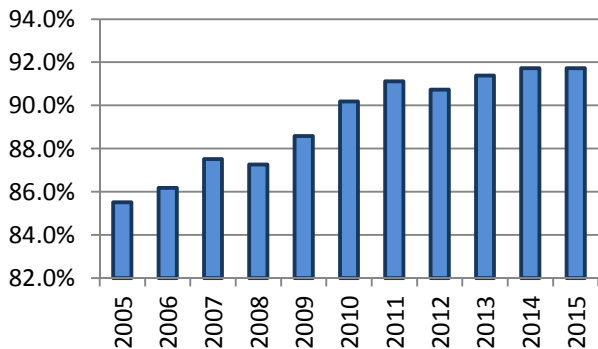


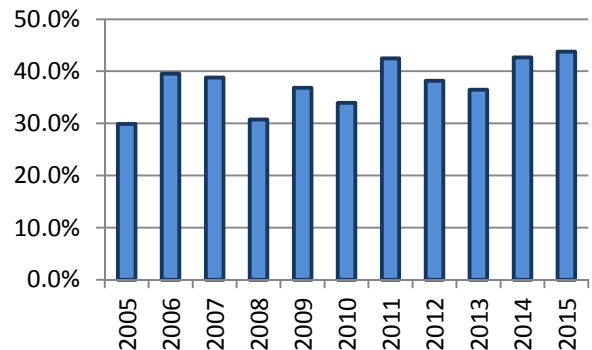
All Occupants* in Crashes - Safety Restraint Usage** History

Years												
	2005	2006	2007	2008	2009	2010	2011	2012	2013	2014	2015	Totals
Occupants in Crashes	156,197	148,653	157,425	145,114	133,518	131,816	129,410	125,633	126,995	128,278	130,747	1,513,786
Occupants Using Safety Belts	133,565	128,109	137,762	126,623	118,265	118,883	117,913	113,996	116,052	117,665	119,927	1,348,760
% Using Safety Belts	85.5%	86.2%	87.5%	87.3%	88.6%	90.2%	91.1%	90.7%	91.4%	91.7%	91.7%	89.1%
Deaths	351	364	343	309	304	362	313	317	277	300	272	3,512
Using Safety Belts	105	144	133	95	112	123	133	121	101	128	119	1,314
% Using Safety Belts	29.9%	39.6%	38.8%	30.7%	36.8%	34.0%	42.5%	38.2%	36.5%	42.7%	43.8%	37.4%
Injuries	20,879	20,434	20,882	19,098	17,811	17,212	16,676	17,017	16,377	16,095	16,346	198,827
Using Safety Belts	15,981	15,613	16,558	15,094	14,147	14,188	14,059	14,327	14,083	13,950	14,239	162,239
% Using Safety Belts	76.5%	76.4%	79.3%	79.0%	79.4%	82.4%	84.3%	84.2%	86.0%	86.7%	87.1%	81.6%
Unharmd or Unknown	134,967	127,855	136,200	125,707	115,403	114,242	112,421	108,299	110,341	111,883	114,129	1,311,447
Using Safety Belts	117,479	112,352	121,071	111,434	104,006	104,572	103,721	99,548	101,868	103,587	105,569	1,185,207
% Using Safety Belts	87.0%	87.9%	88.9%	88.6%	90.1%	91.5%	92.3%	91.9%	92.3%	92.6%	92.5%	90.4%

Percent of Occupants Safety Belt Use All Ages



Percent of Occupant Safety Belt Use Deaths: All Ages



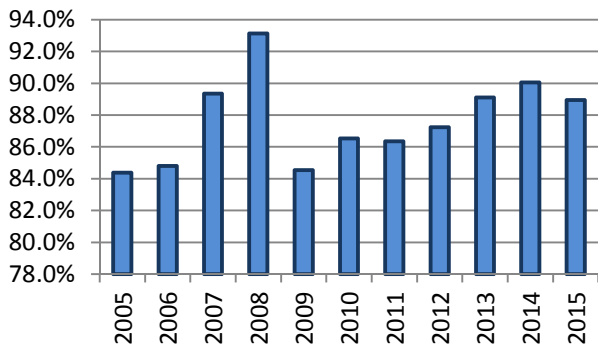
*Excludes occupants in vehicle body types: motorcycle, moped, farm equipment, all-terrain vehicle, bus, train, other, and unknown

**Excludes airbag only, helmet, eye protection, and unknown restraint use

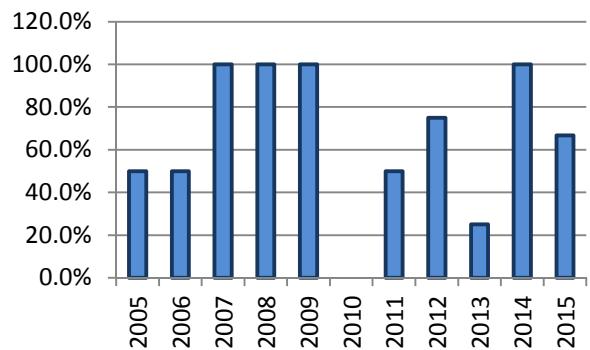
Occupants* 1-3 Years Old in Crashes - Safety Restraint Usage** History

Years												
	2005	2006	2007	2008	2009	2010	2011	2012	2013	2014	2015	Totals
Occupants in Crashes	4,548	4,162	4,615	3,991	3,847	3,490	3,545	3,710	3,669	3,596	3,728	42,901
Occupants Using Safety Belts	3,837	3,529	4,123	3,717	3,252	3,020	3,061	3,236	3,269	3,238	3,316	37,598
% Using Safety Belts	84.4%	84.8%	89.3%	93.1%	84.5%	86.5%	86.3%	87.2%	89.1%	90.0%	88.9%	87.6%
Deaths	2	2	6	1	4	3	4	4	4	1	3	34
Using Safety Belts	1	1	6	1	4	0	2	3	1	1	2	22
% Using Safety Belts	50.0%	50.0%	100.0%	100.0%	100.0%	0.0%	50.0%	75.0%	25.0%	100.0%	66.7%	64.7%
Injuries	333	295	314	275	288	212	273	290	255	232	249	3,016
Using Safety Belts	241	216	257	234	219	168	221	221	208	200	206	2,391
% Using Safety Belts	72.4%	73.2%	81.8%	85.1%	76.0%	79.2%	81.0%	76.2%	81.6%	86.2%	82.7%	79.3%
Unharmd or Unknown	4,213	3,865	4,295	3,715	3,555	3,275	3,268	3,416	3,410	3,363	3,476	39,851
Using Safety Belts	3,595	3,312	3,860	3,482	3,029	2,852	2,838	3,012	3,060	3,037	3,108	35,185
% Using Safety Belts	85.3%	85.7%	89.9%	93.7%	85.2%	87.1%	86.8%	88.2%	89.7%	90.3%	89.4%	88.3%

Percent of Occupants Safety Belt Use All Ages



Percent of Occupant Safety Belt Use Deaths: All Ages



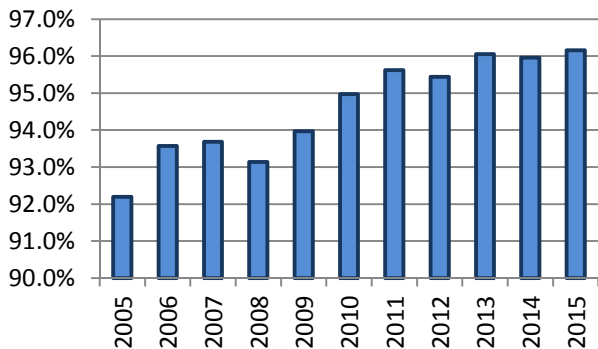
*Excludes occupants in vehicle body types: motorcycle, moped, farm equipment, all-terrain vehicle, bus, train, other, and unknown

**Restraint usage: infant, child, or booster seat, with or without airbag deployment.

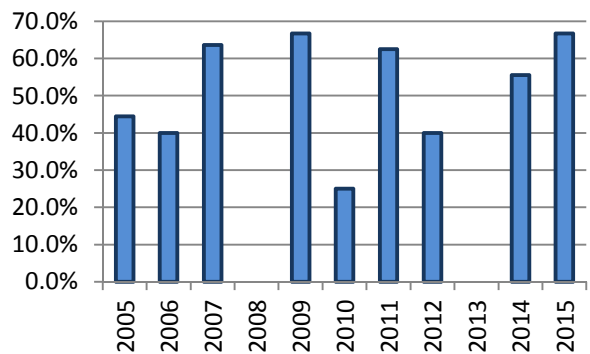
Occupants* 4-13 Years Old in Crashes - Safety Restraint Usage** History

Years												
	2005	2006	2007	2008	2009	2010	2011	2012	2013	2014	2015	Totals
Occupants in Crashes	10,122	9,505	10,163	9,384	8,370	7,025	7,670	7,700	7,954	8,207	8,115	94,215
Occupants Using Safety Belts	9,332	8,894	9,521	8,740	7,865	6,672	7,334	7,349	7,640	7,875	7,803	89,025
% Using Safety Belts	92.2%	93.6%	93.7%	93.1%	94.0%	95.0%	95.6%	95.4%	96.1%	96.0%	96.2%	94.5%
Deaths	18	5	11	5	3	4	8	10	5	9	6	84
Using Safety Belts	8	2	7	0	2	1	5	4	0	5	4	38
% Using Safety Belts	44.4%	40.0%	63.6%	0.0%	66.7%	25.0%	62.5%	40.0%	0.0%	55.6%	66.7%	45.2%
Injuries	1,124	1,082	1,029	1,009	921	714	790	906	868	783	818	10,044
Using Safety Belts	913	872	857	848	783	620	713	799	792	712	739	8,648
% Using Safety Belts	81.2%	80.6%	83.3%	84.0%	85.0%	86.8%	90.3%	88.2%	91.2%	90.9%	90.3%	86.1%
Unharmd or Unknown	8,980	8,418	9,123	8,370	7,446	6,307	6,872	6,784	7,081	7,415	7,291	84,087
Using Safety Belts	8,411	8,020	8,657	7,892	7,080	6,051	6,616	6,546	6,848	7,158	7,060	80,339
% Using Safety Belts	93.7%	95.3%	94.9%	94.3%	95.1%	95.9%	96.3%	96.5%	96.7%	96.5%	96.8%	95.5%

Percent of Occupants Safety Belt Use All Ages



Percent of Occupant Safety Belt Use Deaths: All Ages



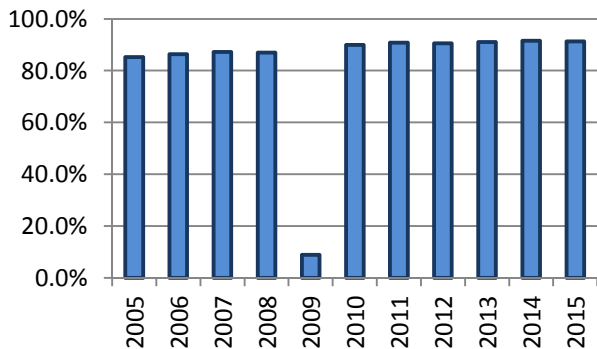
*Excludes occupants in vehicle body types: motorcycle, moped, farm equipment, all-terrain vehicle, bus, train, other, and unknown

**Excludes airbag only, helmet, eye protection, and unknown restraint use

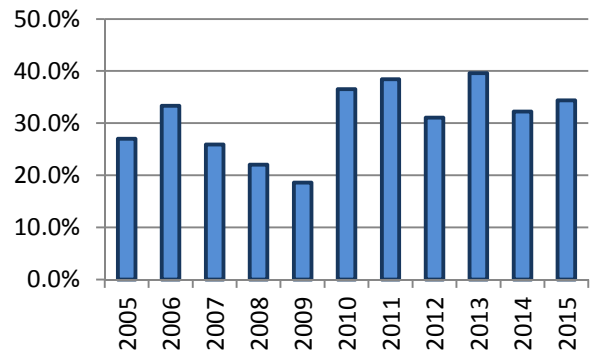
All Occupants* in Crashes - Safety Restraint Usage** History Where the Speed Limit is Less Than or Equal to 45 mph

Years												
	2005	2006	2007	2008	2009	2010	2011	2012	2013	2014	2015	Totals
Occupants in Crashes	103,000	97,538	101,197	94,795	851,251	81,777	81,107	81,570	81,574	81,714	81,943	1,737,466
Occupants Using Safety Belts	87,812	84,176	88,292	82,399	75,202	73,564	73,659	73,837	74,322	74,844	74,813	862,920
% Using Safety Belts	85.3%	86.3%	87.2%	86.9%	8.8%	90.0%	90.8%	90.5%	91.1%	91.6%	91.3%	49.7%
Deaths	63	75	54	68	43	63	52	58	48	62	64	650
Using Safety Belts	17	25	14	15	8	23	20	18	19	20	22	201
% Using Safety Belts	27.0%	33.3%	25.9%	22.1%	18.6%	36.5%	38.5%	31.0%	39.6%	32.3%	34.4%	30.9%
Injuries	11,965	11,692	12,046	11,356	10,372	9,589	9,488	9,975	9,426	9,272	9,392	114,573
Using Safety Belts	9,484	9,350	9,934	9,315	8,531	8,159	8,253	8,700	8,343	8,286	8,385	96,740
% Using Safety Belts	79.3%	80.0%	82.5%	82.0%	82.3%	85.1%	87.0%	87.2%	88.5%	89.4%	89.3%	84.4%
Unharmd or Unknown	90,972	857,771	89,097	83,371	74,706	72,125	71,567	71,537	72,100	72,380	72,487	1,628,113
Using Safety Belts	78,311	74,801	78,344	73,069	66,663	65,382	65,386	65,119	65,960	66,538	66,406	765,979
% Using Safety Belts	86.1%	8.7%	87.9%	87.6%	89.2%	90.7%	91.4%	91.0%	91.5%	91.9%	91.6%	47.0%

Percent of Occupants Safety Belt Use All Ages



Percent of Occupant Safety Belt Use Deaths: All Ages



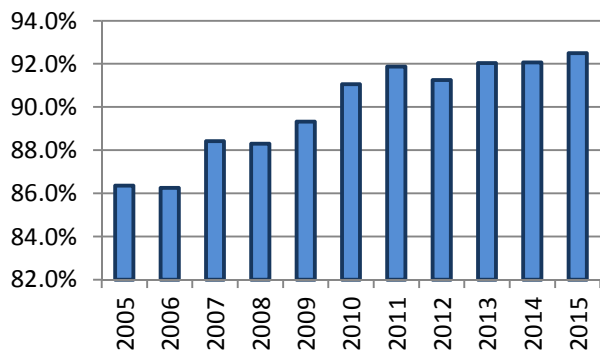
*Excludes occupants in vehicle body types: motorcycle, moped, farm equipment, all-terrain vehicle, bus, train, other, and unknown

**Excludes airbag only, helmet, eye protection, and unknown restraint use

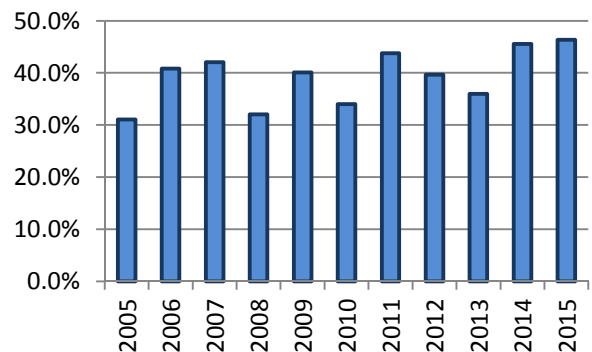
All Occupants* in Crashes - Safety Restraint Usage** History Where the Speed Limit is Greater Than 45 mph

Years												
	2005	2006	2007	2008	2009	2010	2011	2012	2013	2014	2015	Totals
Occupants in Crashes	49,308	47,873	52,936	48,030	45,625	45,753	44,816	42,481	44,441	45,155	47,149	513,567
Occupants Using Safety Belts	42,585	41,295	46,806	42,408	40,755	41,663	41,173	38,765	40,905	41,574	43,609	461,538
% Using Safety Belts	86.4%	86.3%	88.4%	88.3%	89.3%	91.1%	91.9%	91.3%	92.0%	92.1%	92.5%	89.9%
Deaths	280	284	283	237	257	294	256	257	228	237	207	2,820
Using Safety Belts	87	116	119	76	103	100	112	102	82	108	96	1,101
% Using Safety Belts	31.1%	40.8%	42.0%	32.1%	40.1%	34.0%	43.8%	39.7%	36.0%	45.6%	46.4%	39.0%
Injuries	8,420	8,289	8,452	7,483	7,116	7,166	6,766	6,875	6,851	6,713	6,806	80,937
Using Safety Belts	6,134	5,937	6,351	5,609	5,379	5,684	5,445	5,485	5,659	5,573	5,721	62,977
% Using Safety Belts	72.9%	71.6%	75.1%	75.0%	75.6%	79.3%	80.5%	79.8%	82.6%	83.0%	84.1%	77.8%
Unharmd or Unknown	40,608	39,300	44,201	40,310	38,252	38,293	37,794	35,349	37,362	38,205	40,136	429,810
Using Safety Belts	36,364	35,242	40,336	36,723	35,273	35,879	35,616	33,178	35,164	35,893	37,792	397,460
% Using Safety Belts	89.5%	89.7%	91.3%	91.1%	92.2%	93.7%	94.2%	93.9%	94.1%	93.9%	94.2%	92.5%

Percent of Occupants Safety Belt Use All Ages



Percent of Occupant Safety Belt Use Deaths: All Ages



*Excludes occupants in vehicle body types: motorcycle, moped, farm equipment, all-terrain vehicle, bus, train, other, and unknown

**Excludes airbag only, helmet, eye protection, and unknown restraint use