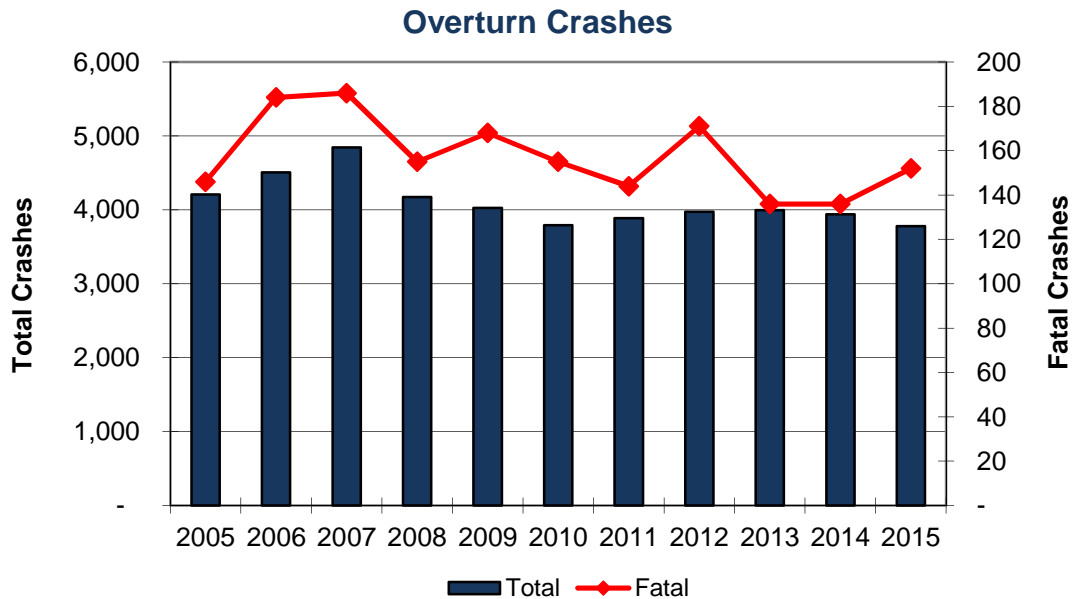


Vehicle Overturn Crashes

Year	Crashes				People	
	Total	Fatal	Injury	PDO	Deaths	Injuries
2005	4,206	146	2,511	1,549	166	3,586
2006	4,505	184	2,781	1,540	204	4,034
2007	4,843	186	2,847	1,810	202	4,028
2008	4,173	155	2,550	1,468	165	3,613
2009	4,024	168	2,405	1,451	187	3,523
2010	3,793	155	2,258	1,380	176	3,221
2011	3,888	144	2,308	1,436	157	3,260
2012	3,973	171	2,511	1,291	193	3,522
2013	3,996	136	2,286	1,574	139	3,228
2014	3,939	136	2,306	1,497	163	3,174
2015	3,781	152	2,198	1,431	171	3,101
Total	45,121	1,733	26,961	16,427	1,923	38,290



In 2015, 6.25% of all crashes and 47.2% of all fatal crashes involve vehicles overturning.