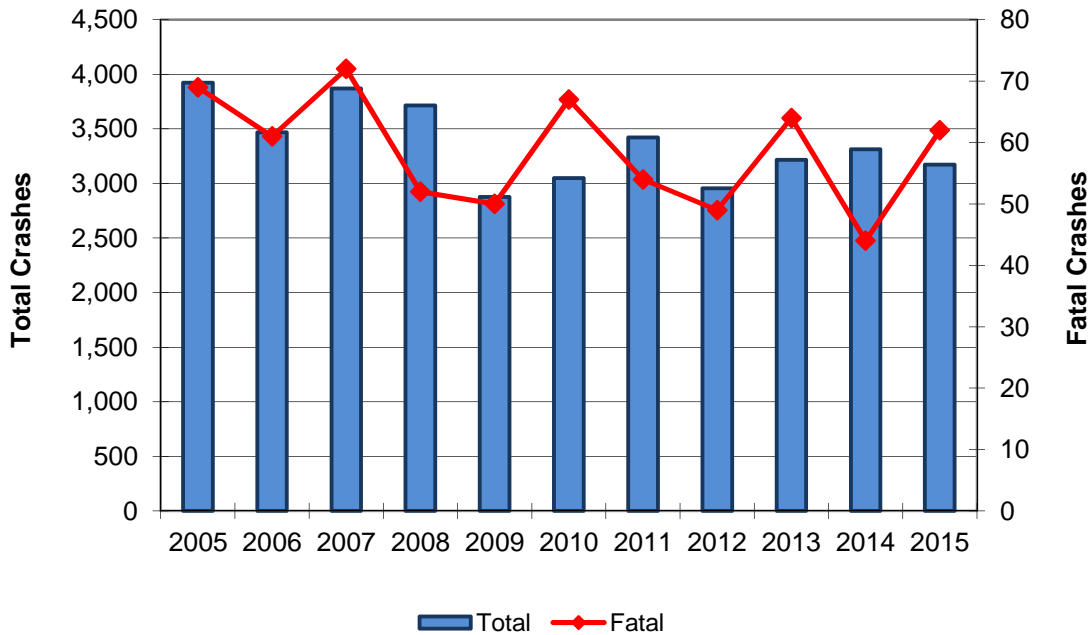


# Crashes Involving Heavy / Large Trucks

Year	Crashes				People	
	Total	Fatal	Injury	PDO	Deaths	Injuries
2005	3,923	69	888	2,966	82	1,223
2006	3,469	61	751	2,657	69	1,030
2007	3,872	72	864	2,936	80	1,250
2008	3,714	52	846	2,816	63	1,152
2009	2,877	50	597	2,230	59	860
2010	3,051	67	655	2,329	85	940
2011	3,422	54	722	2,646	64	1,019
2012	2,957	49	640	2,268	58	908
2013	3,218	64	675	2,479	70	942
2014	3,313	44	681	2,588	49	932
2015	3,174	62	623	2,489	69	867
<b>Total</b>	<b>36,990</b>	<b>644</b>	<b>7,942</b>	<b>28,404</b>	<b>748</b>	<b>11,123</b>



## Heavy / Large Truck Summary



In 2015, heavy / large trucks were involved in 5.2% of all crashes and 19.3% of fatal crashes.