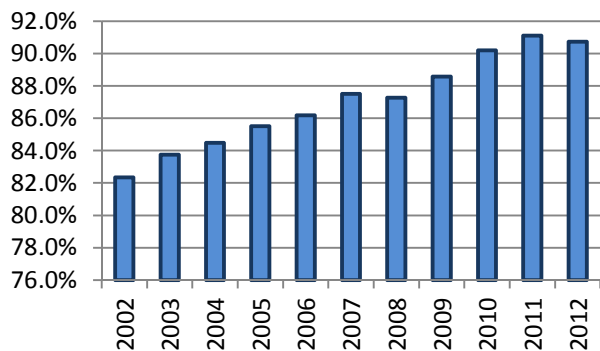


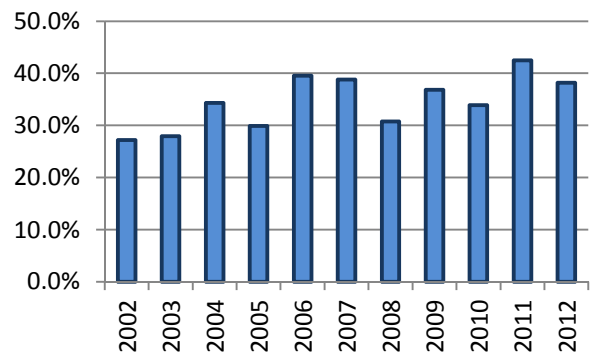
All Occupants* in Accidents - Safety Restraint Usage** History

Years												
	2002	2003	2004	2005	2006	2007	2008	2009	2010	2011	2012	Totals
Occupants in Accidents	182,785	172,652	170,246	156,197	148,654	157,426	145,114	133,624	131,825	128,968	125,263	1,652,754
Occupants Using Safety Belts	150,526	144,582	143,835	133,565	128,109	137,763	126,623	118,360	118,888	117,504	113,653	1,433,408
% Using Safety Belts	82.4%	83.7%	84.5%	85.5%	86.2%	87.5%	87.3%	88.6%	90.2%	91.1%	90.7%	86.7%
Deaths	438	401	399	351	364	343	309	304	363	313	317	3,902
Using Safety Belts	119	112	137	105	144	133	95	112	123	133	121	1,334
% Using Safety Belts	27.2%	27.9%	34.3%	29.9%	39.6%	38.8%	30.7%	36.8%	33.9%	42.5%	38.2%	34.2%
Injuries	25,295	23,088	21,940	20,879	20,435	20,882	19,098	17,819	17,213	16,625	16,973	220,247
Using Safety Belts	18,074	16,986	16,466	15,981	15,613	16,558	15,094	14,153	14,189	14,015	14,290	171,419
% Using Safety Belts	71.5%	73.6%	75.1%	76.5%	76.4%	79.3%	79.0%	79.4%	82.4%	84.3%	84.2%	77.8%
Unharmd or Unknown	157,052	149,163	147,907	134,967	127,855	136,201	125,707	115,501	114,249	112,030	107,973	1,428,605
Using Safety Belts	132,333	127,484	127,232	117,479	112,352	121,072	111,434	104,095	104,576	103,356	99,242	1,260,655
% Using Safety Belts	84.3%	85.5%	86.0%	87.0%	87.9%	88.9%	88.6%	90.1%	91.5%	92.3%	91.9%	88.2%

Percent of Occupants Safety Belt Use All Ages



Percent of Occupant Safety Belt Use Deaths: All Ages



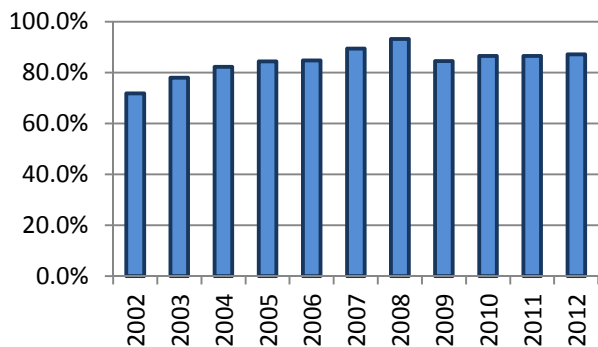
*Excludes occupants in vehicle body types: motorcycle, moped, farm equipment, all-terrain vehicle, bus, train, other, and unknown

**Excludes airbag only, helmet, eye protection, and unknown restraint use

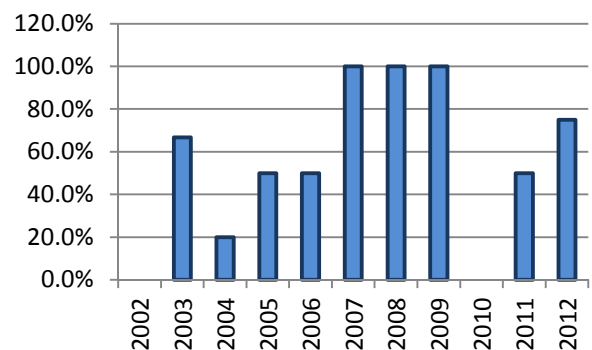
Occupants* 1-3 Years Old in Accidents - Safety Restraint Usage** History

Years												
	2002	2003	2004	2005	2006	2007	2008	2009	2010	2011	2012	Totals
Occupants in Accidents	5,377	4,990	4,987	4,548	4,162	4,615	3,991	3,847	3,490	3,535	3,697	47,239
Occupants Using Safety Belts	3,857	3,892	4,103	3,837	3,529	4,123	3,717	3,252	3,020	3,057	3,223	39,610
% Using Safety Belts	71.7%	78.0%	82.3%	84.4%	84.8%	89.3%	93.1%	84.5%	86.5%	86.5%	87.2%	83.9%
Deaths	6	6	10	2	2	6	1	4	3	4	4	48
Using Safety Belts	0	4	2	1	1	6	1	4	0	2	3	24
% Using Safety Belts	0.0%	66.7%	20.0%	50.0%	50.0%	100.0%	100.0%	100.0%	0.0%	50.0%	75.0%	50.0%
Injuries	441	420	340	333	295	314	275	288	212	272	290	3,480
Using Safety Belts	235	283	254	241	216	257	234	219	168	220	221	2,548
% Using Safety Belts	53.3%	67.4%	74.7%	72.4%	73.2%	81.8%	85.1%	76.0%	79.2%	80.9%	76.2%	73.2%
Unharmd or Unknown	4,930	4,564	4,637	4,213	3,865	4,295	3,715	3,555	3,275	3,259	3,403	43,711
Using Safety Belts	3,622	3,605	3,847	3,595	3,312	3,860	3,482	3,029	2,852	2,835	2,999	37,038
% Using Safety Belts	73.5%	79.0%	83.0%	85.3%	85.7%	89.9%	93.7%	85.2%	87.1%	87.0%	88.1%	84.7%

Percent of Occupants Safety Belt Use All Ages



Percent of Occupant Safety Belt Use Deaths: All Ages



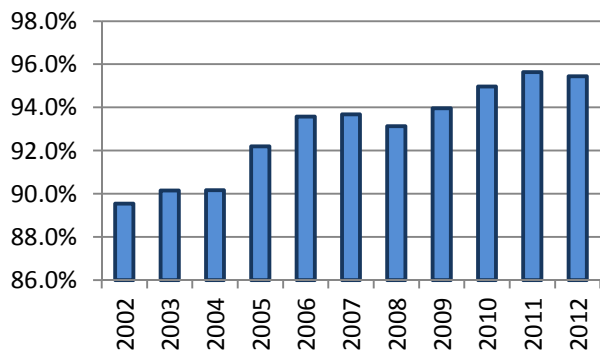
*Excludes occupants in vehicle body types: motorcycle, moped, farm equipment, all-terrain vehicle, bus, train, other, and unknown

**Restraint usage: infant, child, or booster seat, with or without airbag deployment.

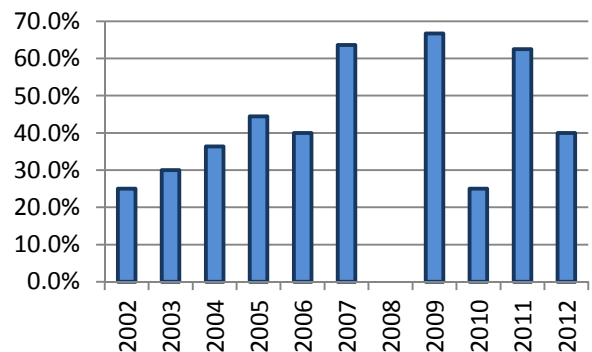
Occupants* 4-13 Years Old in Accidents - Safety Restraint Usage** History

Years												
	2002	2003	2004	2005	2006	2007	2008	2009	2010	2011	2012	Totals
Occupants in Accidents	12,415	11,732	11,377	10,122	9,505	10,163	9,384	8,372	7,025	7,646	7,681	105,422
Occupants Using Safety Belts	11,117	10,576	10,258	9,332	8,894	9,521	8,740	7,867	6,672	7,312	7,331	97,620
% Using Safety Belts	89.5%	90.1%	90.2%	92.2%	93.6%	93.7%	93.1%	94.0%	95.0%	95.6%	95.4%	92.6%
Deaths	12	10	11	18	5	11	5	3	4	8	10	97
Using Safety Belts	3	3	4	8	2	7	0	2	1	5	4	39
% Using Safety Belts	25.0%	30.0%	36.4%	44.4%	40.0%	63.6%	0.0%	66.7%	25.0%	62.5%	40.0%	40.2%
Injuries	1,438	1,270	1,161	1,124	1,082	1,029	1,009	921	714	786	906	11,440
Using Safety Belts	1,079	990	869	913	872	857	848	783	620	710	799	9,340
% Using Safety Belts	75.0%	78.0%	74.8%	81.2%	80.6%	83.3%	84.0%	85.0%	86.8%	90.3%	88.2%	81.6%
Unharmd or Unknown	10,965	10,452	10,205	8,980	8,418	9,123	8,370	7,448	6,307	6,852	6,765	93,885
Using Safety Belts	10,035	9,583	9,385	8,411	8,020	8,657	7,892	7,082	6,051	6,597	6,528	88,241
% Using Safety Belts	91.5%	91.7%	92.0%	93.7%	95.3%	94.9%	94.3%	95.1%	95.9%	96.3%	96.5%	94.0%

Percent of Occupants Safety Belt Use All Ages



Percent of Occupant Safety Belt Use Deaths: All Ages



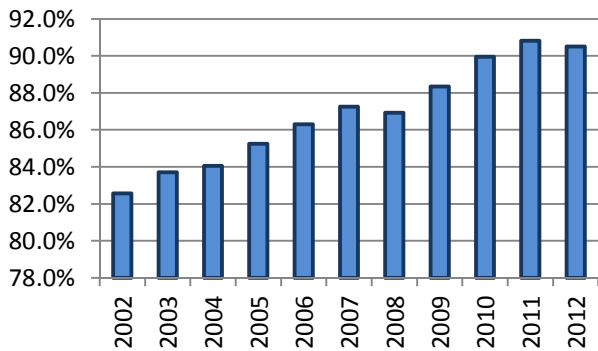
*Excludes occupants in vehicle body types: motorcycle, moped, farm equipment, all-terrain vehicle, bus, train, other, and unknown

**Excludes airbag only, helmet, eye protection, and unknown restraint use

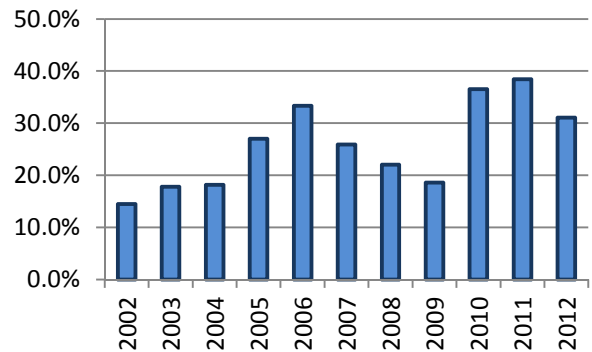
All Occupants* in Accidents - Safety Restraint Usage** History Where the Speed Limit is Less Than or Equal to 45 mph

Years												
	2002	2003	2004	2005	2006	2007	2008	2009	2010	2011	2012	Totals
Occupants in Accidents	123,339	114,246	112,097	103,000	97,538	101,197	94,795	85,186	81,785	80,793	81,291	1,075,267
Occupants Using Safety Belts	101,839	95,633	94,220	87,812	84,176	88,292	82,399	75,261	73,569	73,369	73,574	930,144
% Using Safety Belts	82.6%	83.7%	84.1%	85.3%	86.3%	87.2%	86.9%	88.3%	90.0%	90.8%	90.5%	86.5%
Deaths	76	73	55	63	75	54	68	43	63	52	58	680
Using Safety Belts	11	13	10	17	25	14	15	8	23	20	18	174
% Using Safety Belts	14.5%	17.8%	18.2%	27.0%	33.3%	25.9%	22.1%	18.6%	36.5%	38.5%	31.0%	25.6%
Injuries	14,970	13,313	12,557	11,965	11,692	12,046	11,356	10,378	9,589	9,458	9,943	127,267
Using Safety Belts	11,229	10,193	9,810	9,484	9,350	9,934	9,315	8,537	8,159	8,225	8,672	102,908
% Using Safety Belts	75.0%	76.6%	78.1%	79.3%	80.0%	82.5%	82.0%	82.3%	85.1%	87.0%	87.2%	80.9%
Unharmd or Unknown	108,293	100,860	99,485	90,972	85,771	89,097	83,371	74,765	72,133	71,283	71,290	947,320
Using Safety Belts	90,599	85,427	84,400	78,311	74,801	78,344	73,069	66,716	65,387	65,124	64,884	827,062
% Using Safety Belts	83.7%	84.7%	84.8%	86.1%	87.2%	87.9%	87.6%	89.2%	90.6%	91.4%	91.0%	87.3%

Percent of Occupants Safety Belt Use All Ages



Percent of Occupant Safety Belt Use Deaths: All Ages



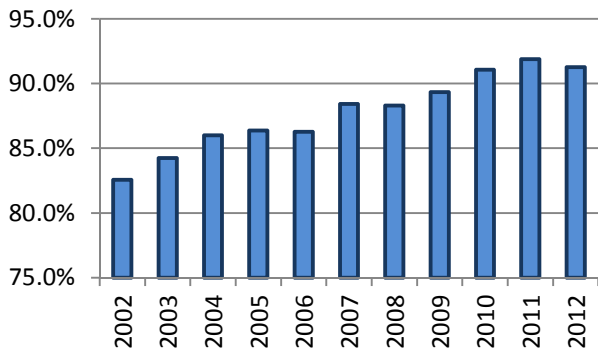
*Excludes occupants in vehicle body types: motorcycle, moped, farm equipment, all-terrain vehicle, bus, train, other, and unknown

**Excludes airbag only, helmet, eye protection, and unknown restraint use

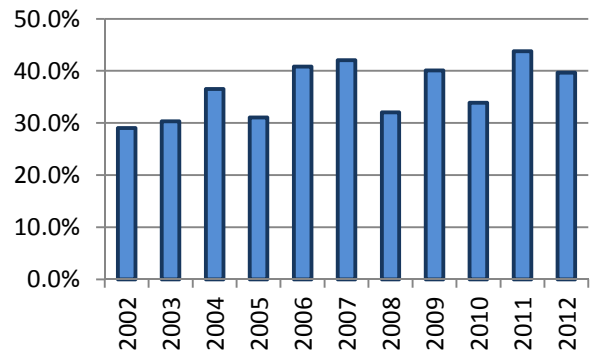
All Occupants* in Accidents - Safety Restraint Usage** History Where the Speed Limit is Greater Than 45 mph

Years												
	2002	2003	2004	2005	2006	2007	2008	2009	2010	2011	2012	Totals
Occupants in Accidents	53,646	52,041	52,494	49,308	47,874	52,937	48,030	45,654	45,754	44,709	42,424	534,871
Occupants Using Safety Belts	44,285	43,840	45,136	42,585	41,295	46,807	42,408	40,781	41,663	41,074	38,717	468,591
% Using Safety Belts	82.6%	84.2%	86.0%	86.4%	86.3%	88.4%	88.3%	89.3%	91.1%	91.9%	91.3%	87.6%
Deaths	348	310	331	280	284	283	237	257	295	256	257	3,138
Using Safety Belts	101	94	121	87	116	119	76	103	100	112	102	1,131
% Using Safety Belts	29.0%	30.3%	36.6%	31.1%	40.8%	42.0%	32.1%	40.1%	33.9%	43.8%	39.7%	36.0%
Injuries	9,599	8,926	8,632	8,420	8,290	8,452	7,483	7,118	7,167	6,745	6,866	87,698
Using Safety Belts	6,356	6,158	6,123	6,134	5,937	6,351	5,609	5,379	5,685	5,429	5,479	64,640
% Using Safety Belts	66.2%	69.0%	70.9%	72.9%	71.6%	75.1%	75.0%	75.6%	79.3%	80.5%	79.8%	73.7%
Unharmd or Unknown	43,699	42,805	43,531	40,608	39,300	44,202	40,310	38,279	38,292	37,708	35,301	444,035
Using Safety Belts	37,828	37,588	38,892	36,364	35,242	40,337	36,723	35,299	35,878	35,533	33,136	402,820
% Using Safety Belts	86.6%	87.8%	89.3%	89.5%	89.7%	91.3%	91.1%	92.2%	93.7%	94.2%	93.9%	90.7%

Percent of Occupants Safety Belt Use All Ages



Percent of Occupant Safety Belt Use Deaths: All Ages



*Excludes occupants in vehicle body types: motorcycle, moped, farm equipment, all-terrain vehicle, bus, train, other, and unknown

**Excludes airbag only, helmet, eye protection, and unknown restraint use