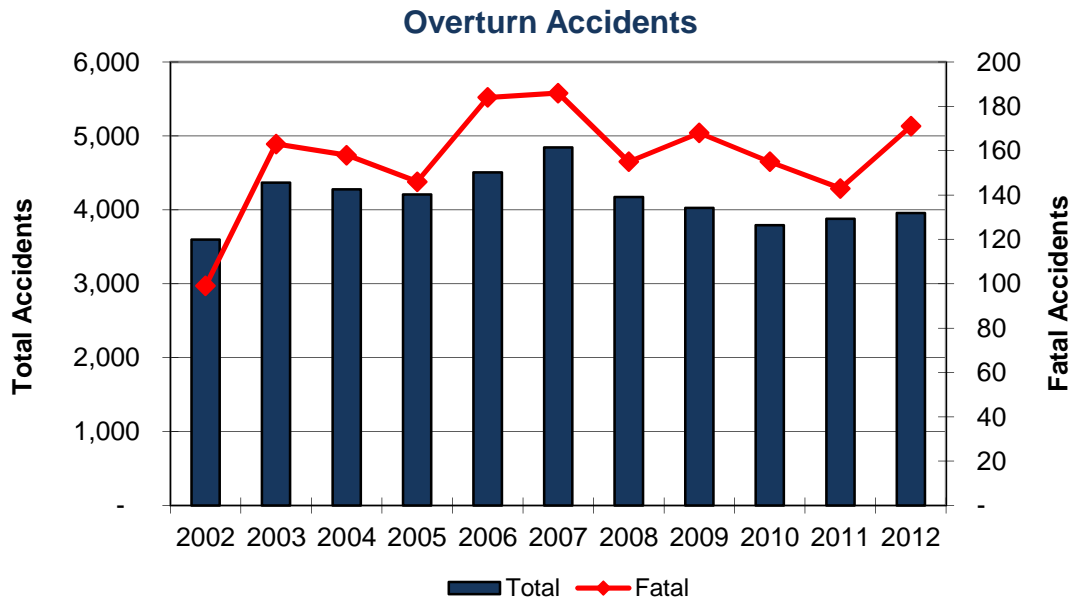


Vehicle Overturn Accidents

Year	Accidents				People	
	Total	Fatal	Injury	PDO	Deaths	Injuries
2002	3,597	99	1,975	1,523	107	2,798
2003	4,370	163	2,522	1,685	179	3,739
2004	4,276	158	2,557	1,561	184	3,794
2005	4,206	146	2,511	1,549	166	3,586
2006	4,506	184	2,782	1,540	204	4,035
2007	4,843	186	2,847	1,810	202	4,028
2008	4,173	155	2,550	1,468	165	3,613
2009	4,025	168	2,406	1,451	187	3,524
2010	3,793	155	2,258	1,380	176	3,222
2011	3,879	143	2,303	1,433	155	3,252
2012	3,956	171	2,498	1,287	193	3,508
Total	45,624	1,728	27,209	16,687	1,918	39,099



In 2012, 6.79% of all accidents and 46.5% of all fatal accidents involve vehicles overturning.

Note: The definition for overturn accidents changed in 2003. See definitions page.