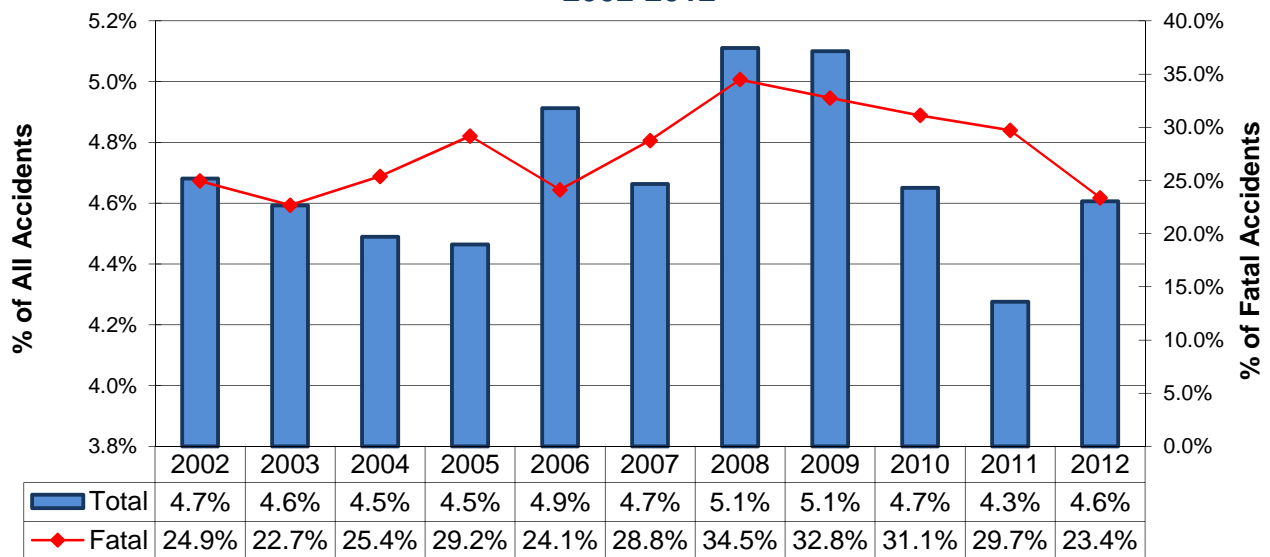


Alcohol-Related Accidents*

Type	Total	Alcohol-Related	% of All
Accidents			
All	58,245	2,683	4.6%
Fatal	368	86	23.4%
Injury	13,718	1,191	8.7%
PDO	44,159	1,406	3.2%
People			
All	132,473	3,934	3.0%
Deaths	405	53	13.1%
Injuries	19,229	1,258	6.5%
Unharmed	112,839	2,623	2.3%



**Alcohol-Related Accident History
2002-2012**



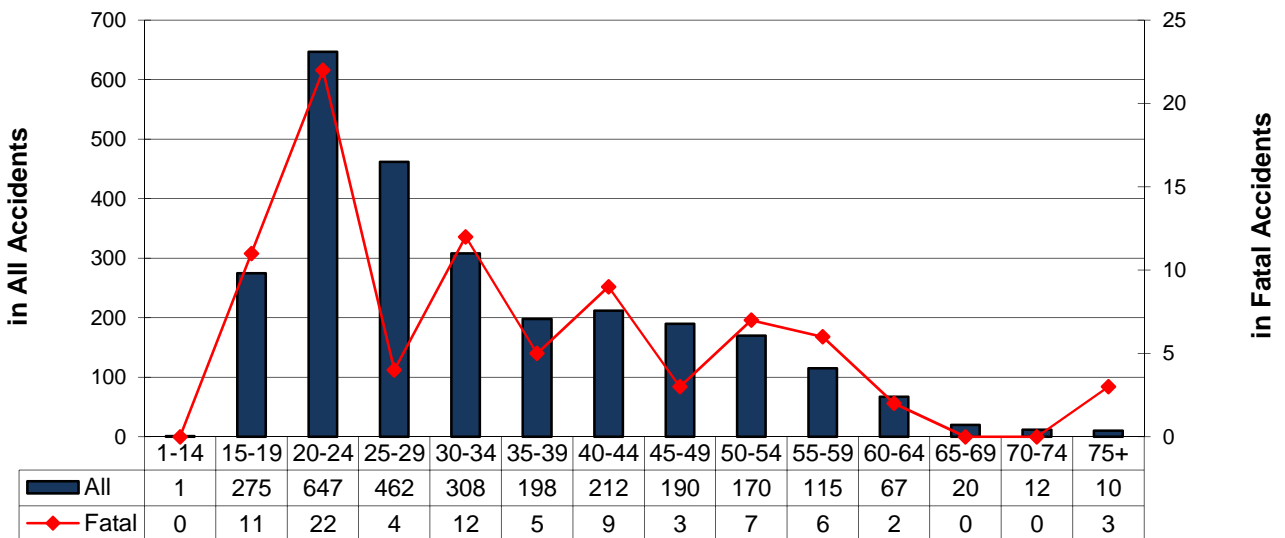
* The alcohol-related accident definition was modified in 2002 and is reflected in all of the data above. See the Definitions pages.

Alcohol-Related Accidents* By Driver Age

Alcohol-Impaired Driver Ages	Accidents				People	
	Total	Fatal	Injury	PDO	Deaths	Injured
Unknown	13	0	4	9	0	7
1-14	1	0	1	0	0	4
15-19	275	11	114	150	13	179
1-20	388	18	154	216	20	252
20-24	647	22	267	358	26	387
25-29	462	4	218	240	4	310
30-34	308	12	129	167	14	176
35-39	198	5	100	93	5	140
40-44	212	9	93	110	10	125
45-49	190	3	83	104	4	112
50-54	170	7	77	86	7	98
55-59	115	6	57	52	6	69
60-64	67	2	26	39	2	31
65-69	20	0	8	12	0	14
70-74	12	0	8	4	0	9
75+	10	3	4	3	4	9



Alcohol-Impaired Drivers by Age Group



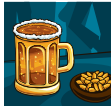
Note: More than one driver per age group can be involved in the same accident.

* The alcohol-related accident definition was modified in 2002 and is reflected in the data above.
See the Definitions pages.

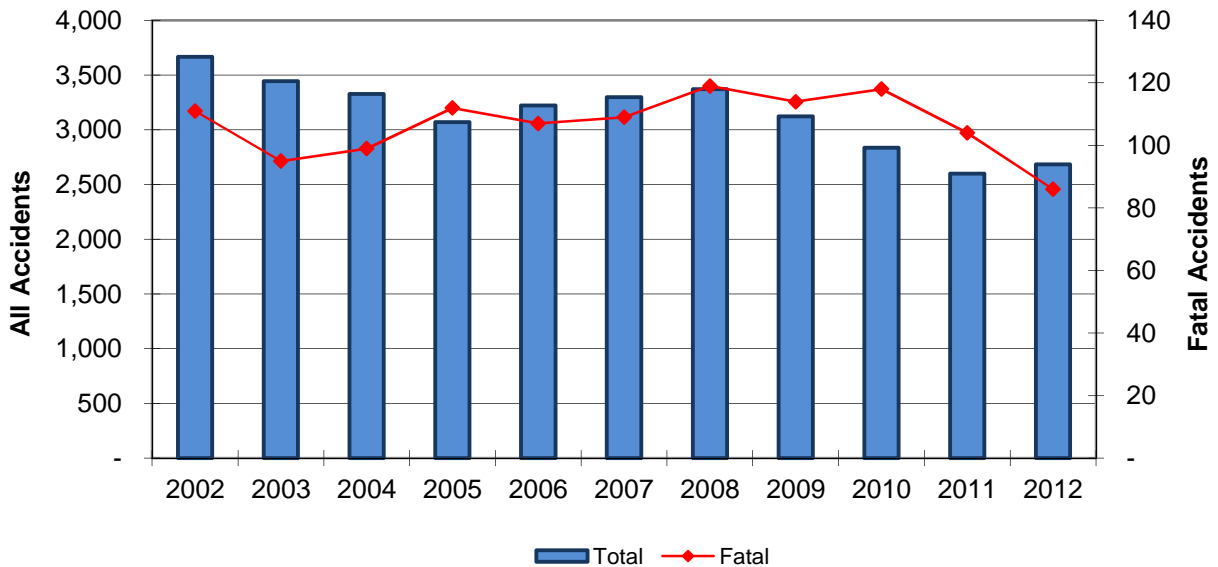
Alcohol-Related Accidents*

2002-2012 Summary

Year	Accidents				People	
	Total	Fatal	Injury	PDO	Deaths	Injuries
2002	3,666	111	1,635	1,920	129	2,419
2003	3,445	95	1,519	1,831	105	2,285
2004	3,328	99	1,422	1,807	117	2,014
2005	3,069	112	1,361	1,596	119	1,959
2006	3,222	107	1,448	1,667	118	2,062
2007	3,297	109	1,380	1,808	119	1,949
2008	3,370	119	1,389	1,862	130	2,004
2009	3,123	114	1,339	1,670	125	1,920
2010	2,837	118	1,167	1,552	139	1,673
2011	2,599	104	1,104	1,391	114	1,563
2012	2,683	86	1,191	1,406	97	1,666
Total	34,639	1,174	14,955	18,510	1,312	21,514



2002-2012 Alcohol-Related Accident Summary



* The alcohol-related accident definition was modified in 2002 and is reflected in all of the data above. See the Definitions pages.

Alcohol-Related Accidents*

Involving Alcohol-Impaired Male Drivers

Year	Accidents				People	
	Total	Fatal	Injury	PDO	Deaths	Injuries
2002	3,044	101	1,383	1,560	119	2,087
2003	2,814	84	1,279	1,451	94	1,970
2004	2,710	84	1,191	1,435	99	1,721
2005	2,542	98	1,164	1,280	105	1,716
2006	2,631	92	1,202	1,337	100	1,758
2007	2,674	102	1,139	1,433	112	1,644
2008	2,738	109	1,151	1,478	119	1,698
2009	2,558	105	1,115	1,338	116	1,623
2010	2,250	103	934	1,213	124	1,388
2011	2,083	88	911	1,084	98	1,288
2012	2,166	80	977	1,109	91	1,403
Total	28,210	1,046	12,446	14,718	1,177	18,296

Involving Alcohol-Impaired Female Drivers

Year	Accidents				People	
	Total	Fatal	Injury	PDO	Deaths	Injuries
2002	1,017	38	451	528	43	781
2003	995	29	451	515	36	785
2004	982	31	440	511	41	729
2005	862	36	372	454	40	647
2006	900	30	435	435	38	718
2007	919	22	418	479	23	674
2008	934	34	424	476	43	703
2009	887	30	404	453	33	669
2010	892	33	372	487	41	600
2011	744	29	285	430	32	463
2012	792	19	356	417	24	574
Total	9,924	331	4,408	5,185	394	7,343

* The alcohol-related accident definition was modified in 2002 and is reflected in the data above. See the Definitions pages.

Note: There are instances where a female and a male driver were involved in the same accident causing multiple counting in the data above. In addition, drivers whose gender was unknown are excluded.