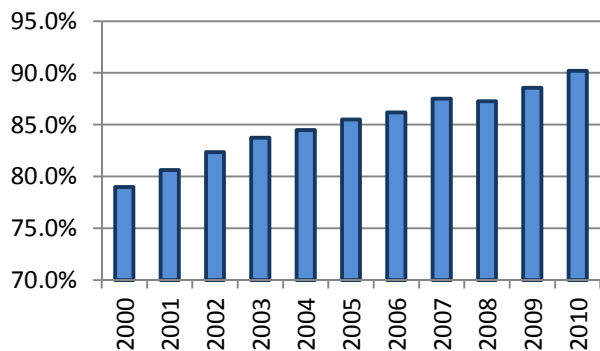


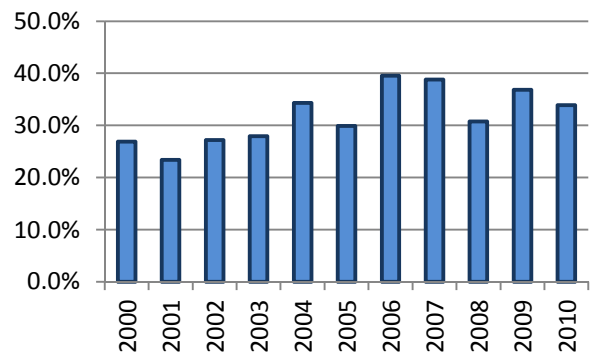
All Occupants* in Accidents - Safety Restraint Usage** History

Years												
	2000	2001	2002	2003	2004	2005	2006	2007	2008	2009	2010	Totals
Occupants in Accidents	185,183	184,931	182,785	172,657	170,246	156,197	148,654	157,427	145,113	133,655	131,835	1,768,683
Occupants Using Safety Belts	146,273	149,085	150,526	144,587	143,835	133,565	128,109	137,764	126,628	118,389	118,901	1,497,662
% Using Safety Belts	79.0%	80.6%	82.4%	83.7%	84.5%	85.5%	86.2%	87.5%	87.3%	88.6%	90.2%	84.7%
Deaths	409	436	438	401	399	351	364	343	309	304	363	4,117
Using Safety Belts	110	102	119	112	137	105	144	133	95	112	123	1,292
% Using Safety Belts	26.9%	23.4%	27.2%	27.9%	34.3%	29.9%	39.6%	38.8%	30.7%	36.8%	33.9%	31.4%
Injuries	27,374	27,158	25,295	23,088	21,940	20,879	20,435	20,882	19,098	17,821	17,220	241,190
Using Safety Belts	18,615	18,872	18,074	16,986	16,466	15,981	15,613	16,558	15,094	14,156	14,196	180,611
% Using Safety Belts	68.0%	69.5%	71.5%	73.6%	75.1%	76.5%	76.4%	79.3%	79.0%	79.4%	82.4%	74.9%
Unharmful or Unknown	157,400	157,337	157,052	149,168	147,907	134,967	127,855	136,202	125,706	115,530	114,252	1,523,376
Using Safety Belts	127,548	130,111	132,333	127,489	127,232	117,479	112,352	121,073	111,439	104,121	104,582	1,315,759
% Using Safety Belts	81.0%	82.7%	84.3%	85.5%	86.0%	87.0%	87.9%	88.9%	88.7%	90.1%	91.5%	86.4%

Percent of Occupants Safety Belt Use All Ages



Percent of Occupant Safety Belt Use Deaths: All Ages



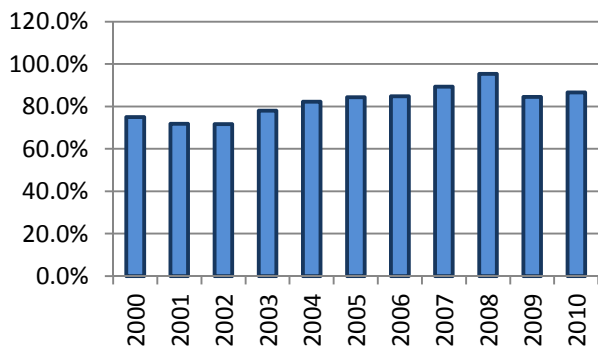
*Excludes occupants in vehicle body types: motorcycle, moped, farm equipment, all-terrain vehicle, bus, train, other, and unknown

**Excludes airbag only, helmet, eye protection, and unknown restraint use

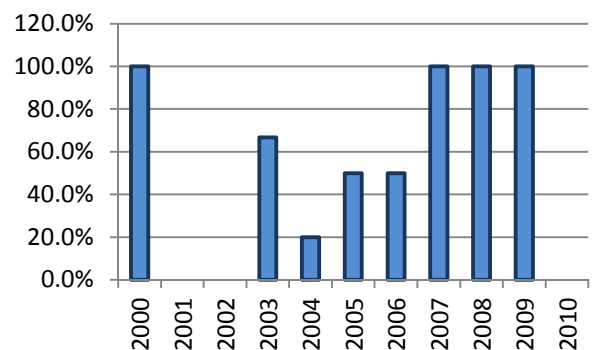
Occupants* 1-3 Years Old in Accidents - Safety Restraint Usage** History

Years												
	2000	2001	2002	2003	2004	2005	2006	2007	2008	2009	2010	Totals
Occupants in Accidents	5,593	5,513	5,377	4,990	4,987	4,548	4,162	4,615	3,990	3,837	3,261	50,873
Occupants Using Safety Belts	4,198	3,958	3,857	3,892	4,103	3,837	3,529	4,123	3,805	3,243	2,823	41,368
% Using Safety Belts	75.1%	71.8%	71.7%	78.0%	82.3%	84.4%	84.8%	89.3%	95.4%	84.5%	86.6%	81.3%
Deaths	2	1	6	6	10	2	2	6	1	4	2	42
Using Safety Belts	2	0	0	4	2	1	1	6	1	4	0	21
% Using Safety Belts	100.0%	0.0%	0.0%	66.7%	20.0%	50.0%	50.0%	100.0%	100.0%	100.0%	0.0%	50.0%
Injuries	472	455	441	420	340	333	295	314	275	287	205	3,837
Using Safety Belts	302	255	235	283	254	241	216	257	241	218	163	2,665
% Using Safety Belts	64.0%	56.0%	53.3%	67.4%	74.7%	72.4%	73.2%	81.8%	87.6%	76.0%	79.5%	69.5%
Unharmd or Unknown	5,119	5,057	4,930	4,564	4,637	4,213	3,865	4,295	3,714	3,546	3,054	46,994
Using Safety Belts	3,894	3,703	3,622	3,605	3,847	3,595	3,312	3,860	3,563	3,021	2,660	38,682
% Using Safety Belts	76.1%	73.2%	73.5%	79.0%	83.0%	85.3%	85.7%	89.9%	95.9%	85.2%	87.1%	82.3%

Percent of Occupants Safety Belt Use All Ages



Percent of Occupant Safety Belt Use Deaths: All Ages



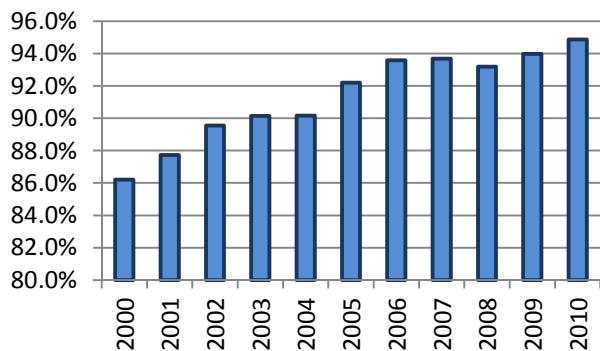
*Excludes occupants in vehicle body types: motorcycle, moped, farm equipment, all-terrain vehicle, bus, train, other, and unknown

**Restraint usage: infant, child, or booster seat, with or without airbag deployment.

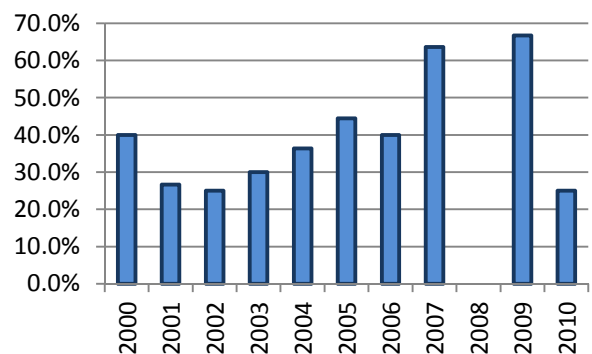
Occupants* 4-13 Years Old in Accidents - Safety Restraint Usage** History

Years												
	2000	2001	2002	2003	2004	2005	2006	2007	2008	2009	2010	Totals
Occupants in Accidents	12,780	12,813	12,415	11,732	11,377	10,122	9,505	10,163	9,386	8,371	6,652	115,316
Occupants Using Safety Belts	11,017	11,241	11,117	10,576	10,258	9,332	8,894	9,521	8,746	7,866	6,311	104,879
% Using Safety Belts	86.2%	87.7%	89.5%	90.1%	90.2%	92.2%	93.6%	93.7%	93.2%	94.0%	94.9%	90.9%
Deaths	15	15	12	10	11	18	5	11	5	3	4	109
Using Safety Belts	6	4	3	3	4	8	2	7	0	2	1	40
% Using Safety Belts	40.0%	26.7%	25.0%	30.0%	36.4%	44.4%	40.0%	63.6%	0.0%	66.7%	25.0%	36.7%
Injuries	1,621	1,653	1,438	1,270	1,161	1,124	1,082	1,029	1,009	920	689	12,996
Using Safety Belts	1,140	1,188	1,079	990	869	913	872	857	848	782	601	10,139
% Using Safety Belts	70.3%	71.9%	75.0%	78.0%	74.8%	81.2%	80.6%	83.3%	84.0%	85.0%	87.2%	78.0%
Unharmd or Unknown	11,144	11,145	10,965	10,452	10,205	8,980	8,418	9,123	8,372	7,448	5,959	102,211
Using Safety Belts	9,871	10,049	10,035	9,583	9,385	8,411	8,020	8,657	7,898	7,082	5,709	94,700
% Using Safety Belts	88.6%	90.2%	91.5%	91.7%	92.0%	93.7%	95.3%	94.9%	94.3%	95.1%	95.8%	92.7%

Percent of Occupants Safety Belt Use All Ages



Percent of Occupant Safety Belt Use Deaths: All Ages



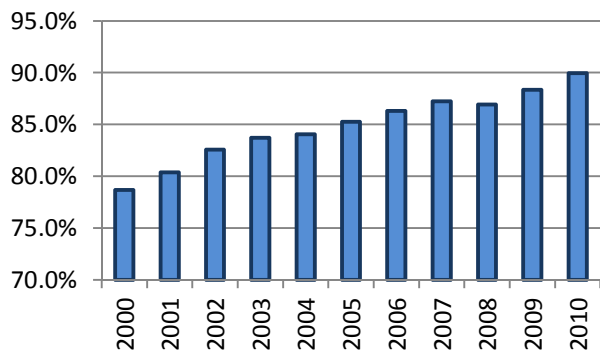
*Excludes occupants in vehicle body types: motorcycle, moped, farm equipment, all-terrain vehicle, bus, train, other, and unknown

**Excludes airbag only, helmet, eye protection, and unknown restraint use

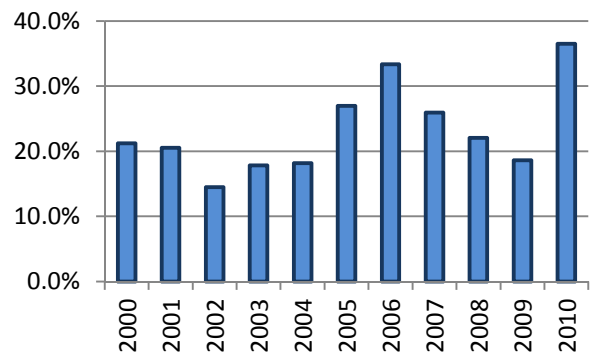
All Occupants* in Accidents - Safety Restraint Usage** History Where the Speed Limit is Less Than or Equal to 45 mph

Years												
	2000	2001	2002	2003	2004	2005	2006	2007	2008	2009	2010	Totals
Occupants in Accidents	123,298	124,826	123,339	114,249	112,097	103,000	97,538	101,197	94,793	85,213	81,798	1,161,348
Occupants Using Safety Belts	97,023	100,335	101,839	95,635	94,220	87,812	84,176	88,292	82,400	75,286	73,580	980,598
% Using Safety Belts	78.7%	80.4%	82.6%	83.7%	84.1%	85.3%	86.3%	87.2%	86.9%	88.4%	90.0%	84.4%
Deaths	66	78	76	73	55	63	75	54	68	43	63	714
Using Safety Belts	14	16	11	13	10	17	25	14	15	8	23	166
% Using Safety Belts	21.2%	20.5%	14.5%	17.8%	18.2%	27.0%	33.3%	25.9%	22.1%	18.6%	36.5%	23.2%
Injuries	16,581	16,679	14,970	13,313	12,557	11,965	11,692	12,046	11,356	10,380	9,593	141,132
Using Safety Belts	11,629	12,004	11,229	10,193	9,810	9,484	9,350	9,934	9,315	8,540	8,163	109,651
% Using Safety Belts	70.1%	72.0%	75.0%	76.6%	78.1%	79.3%	80.0%	82.5%	82.0%	82.3%	85.1%	77.7%
Unharmd or Unknown	106,651	108,069	108,293	100,863	99,485	90,972	85,771	89,097	83,369	74,790	72,142	1,019,502
Using Safety Belts	85,380	88,315	90,599	85,429	84,400	78,311	74,801	78,344	73,070	66,738	65,394	870,781
% Using Safety Belts	80.1%	81.7%	83.7%	84.7%	84.8%	86.1%	87.2%	87.9%	87.6%	89.2%	90.6%	85.4%

Percent of Occupants Safety Belt Use All Ages



Percent of Occupant Safety Belt Use Deaths: All Ages



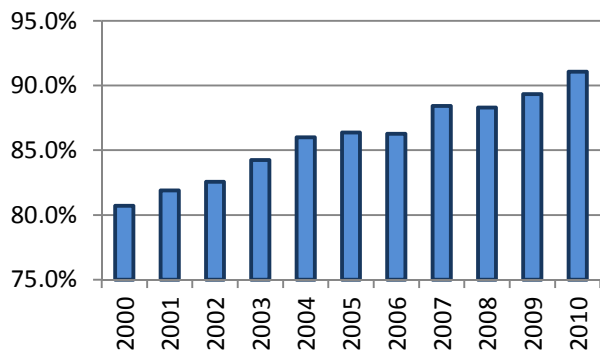
*Excludes occupants in vehicle body types: motorcycle, moped, farm equipment, all-terrain vehicle, bus, train, other, and unknown

**Excludes airbag only, helmet, eye protection, and unknown restraint use

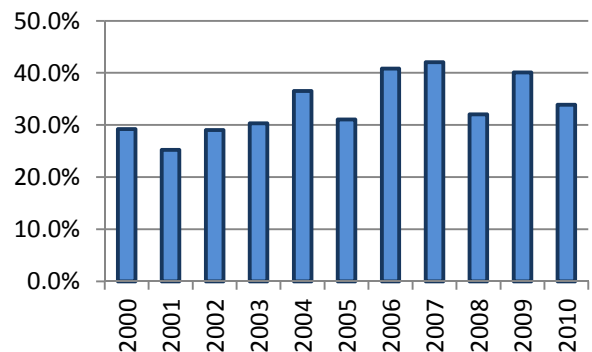
All Occupants* in Accidents - Safety Restraint Usage** History Where the Speed Limit is Greater Than 45 mph

Years												
	2000	2001	2002	2003	2004	2005	2006	2007	2008	2009	2010	Totals
Occupants in Accidents	51,463	54,266	53,646	52,043	52,494	49,308	47,874	52,938	48,031	45,658	45,749	553,470
Occupants Using Safety Belts	41,532	44,445	44,285	43,842	45,136	42,585	41,295	46,808	42,412	40,785	41,662	474,787
% Using Safety Belts	80.7%	81.9%	82.6%	84.2%	86.0%	86.4%	86.3%	88.4%	88.3%	89.3%	91.1%	85.8%
Deaths	318	337	348	310	331	280	284	283	237	257	295	3,280
Using Safety Belts	93	85	101	94	121	87	116	119	76	103	100	1,095
% Using Safety Belts	29.2%	25.2%	29.0%	30.3%	36.6%	31.1%	40.8%	42.0%	32.1%	40.1%	33.9%	33.4%
Injuries	9,298	9,685	9,599	8,926	8,632	8,420	8,290	8,452	7,483	7,118	7,170	93,073
Using Safety Belts	6,038	6,357	6,356	6,158	6,123	6,134	5,937	6,351	5,609	5,379	5,688	66,130
% Using Safety Belts	64.9%	65.6%	66.2%	69.0%	70.9%	72.9%	71.6%	75.1%	75.0%	75.6%	79.3%	71.1%
Unharmd or Unknown	41,847	44,244	43,699	42,807	43,531	40,608	39,300	44,203	40,311	38,283	38,284	457,117
Using Safety Belts	35,401	38,003	37,828	37,590	38,892	36,364	35,242	40,338	36,727	35,303	35,874	407,562
% Using Safety Belts	84.6%	85.9%	86.6%	87.8%	89.3%	89.5%	89.7%	91.3%	91.1%	92.2%	93.7%	89.2%

Percent of Occupants Safety Belt Use All Ages



Percent of Occupant Safety Belt Use Deaths: All Ages



*Excludes occupants in vehicle body types: motorcycle, moped, farm equipment, all-terrain vehicle, bus, train, other, and unknown

**Excludes airbag only, helmet, eye protection, and unknown restraint use