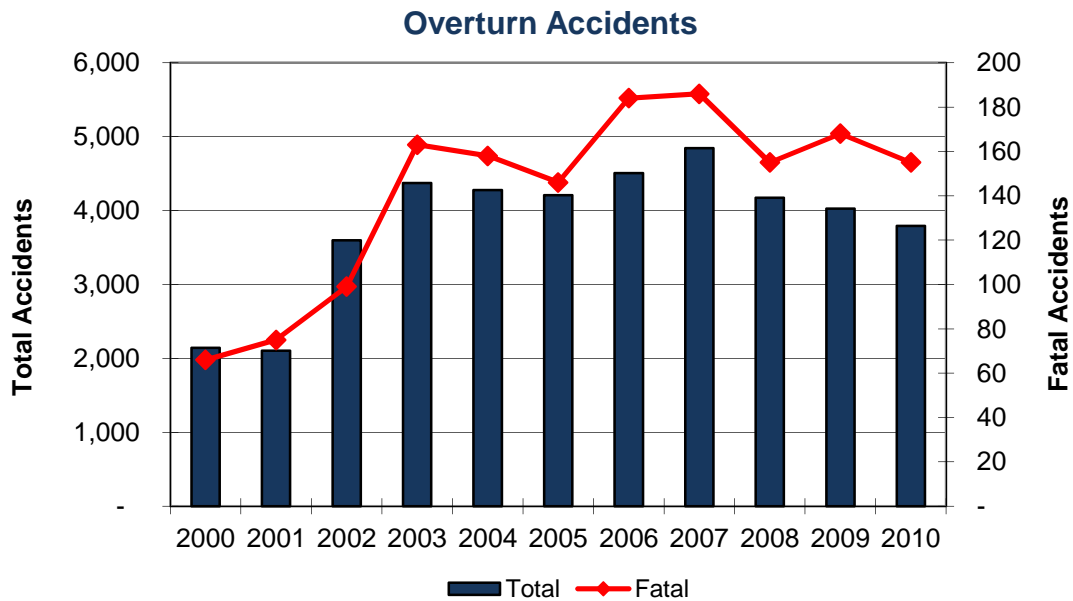


Vehicle Overturn Accidents

Year	Accidents				People	
	Total	Fatal	Injury	PDO	Deaths	Injuries
2000	2,142	66	1,226	850	71	1,736
2001	2,102	75	1,171	856	86	1,631
2002	3,597	99	1,975	1,523	107	2,798
2003	4,371	163	2,522	1,686	179	3,739
2004	4,276	158	2,557	1,561	184	3,794
2005	4,206	146	2,511	1,549	166	3,586
2006	4,506	184	2,782	1,540	204	4,035
2007	4,846	186	2,847	1,813	202	4,028
2008	4,173	155	2,550	1,468	165	3,613
2009	4,025	168	2,406	1,451	187	3,525
2010	3,793	155	2,258	1,380	176	3,222
Total	42,037	1,555	24,805	15,677	1,727	35,707



In 2010, 6.3% of all accidents and 41.2% of all fatal accidents involve vehicles overturning.

Note: The definition for overturn accidents changed in 2003. See definitions page.