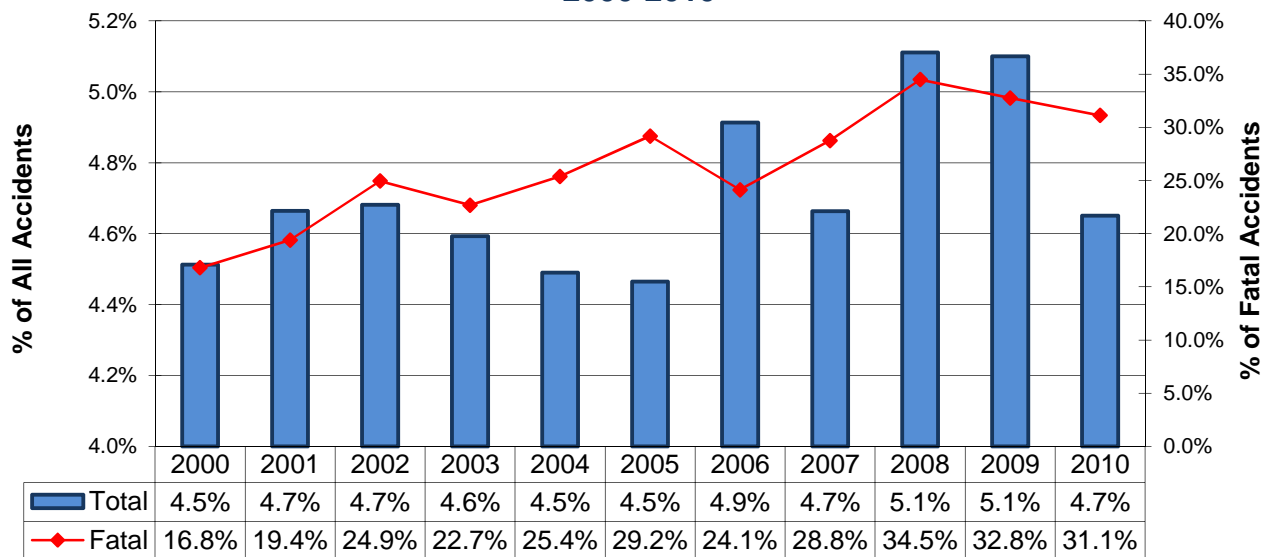


Alcohol-Related Accidents*

Type	Total	Alcohol-Related	% of All
Accidents			
All	60,634	2,820	4.7%
Fatal	376	117	31.1%
Injury	13,480	1,163	8.6%
PDO	46,778	1,540	3.3%
People			
All	138,330	5,258	3.8%
Deaths	431	138	32.0%
Injuries	19,019	1,669	8.8%
Unharmed	118,880	3,451	2.9%



**Alcohol-Related Accident History
2000-2010**



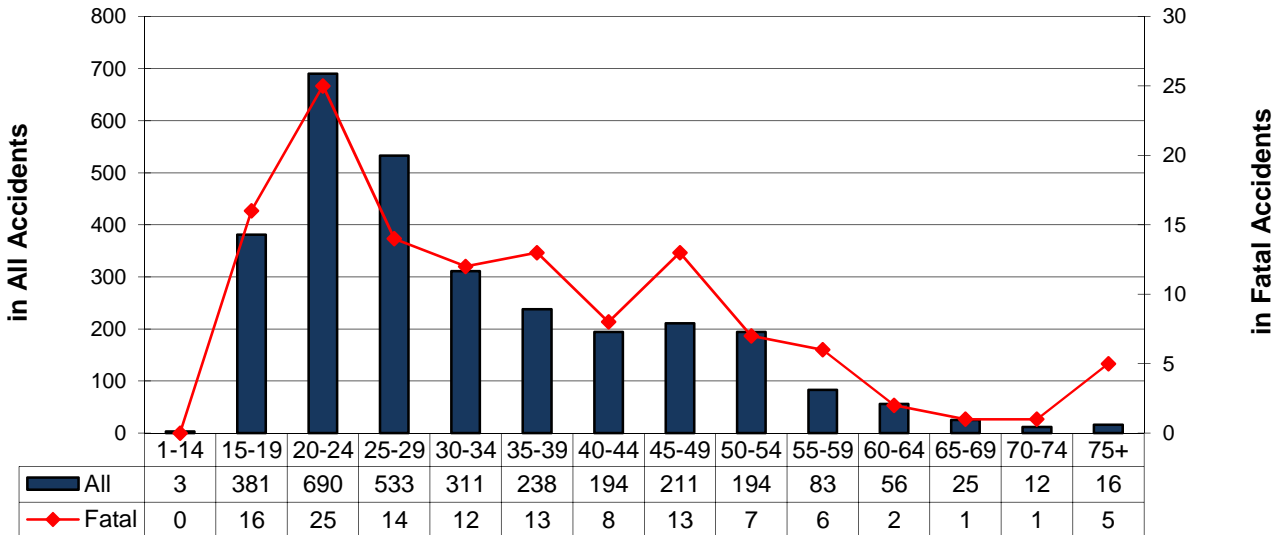
* The alcohol-related accident definition was modified in 2002 and is reflected in all of the data above. See the Definitions pages.

Alcohol-Related Accidents* By Driver Age

Alcohol-Impaired Driver Ages	Accidents				People	
	Total	Fatal	Injury	PDO	Deaths	Injured
Unknown	16	1	2	13	2	2
1-14	3	0	1	2	0	1
15-19	381	16	147	218	17	234
1-20	268	11	110	147	12	181
20-24	690	25	287	378	26	423
25-29	533	14	215	304	19	324
30-34	311	12	132	167	17	191
35-39	238	13	91	134	17	123
40-44	194	8	76	110	9	107
45-49	211	13	89	109	14	111
50-54	194	7	85	102	9	117
55-59	83	6	34	43	6	38
60-64	56	2	24	30	2	31
65-69	25	1	9	15	1	15
70-74	12	1	5	6	1	7
75+	16	5	3	8	5	4



Alcohol-Impaired Drivers by Age Group



Note: More than one driver per age group can be involved in the same accident.

* The alcohol-related accident definition was modified in 2002 and is reflected in the data above.
See the Definitions pages.

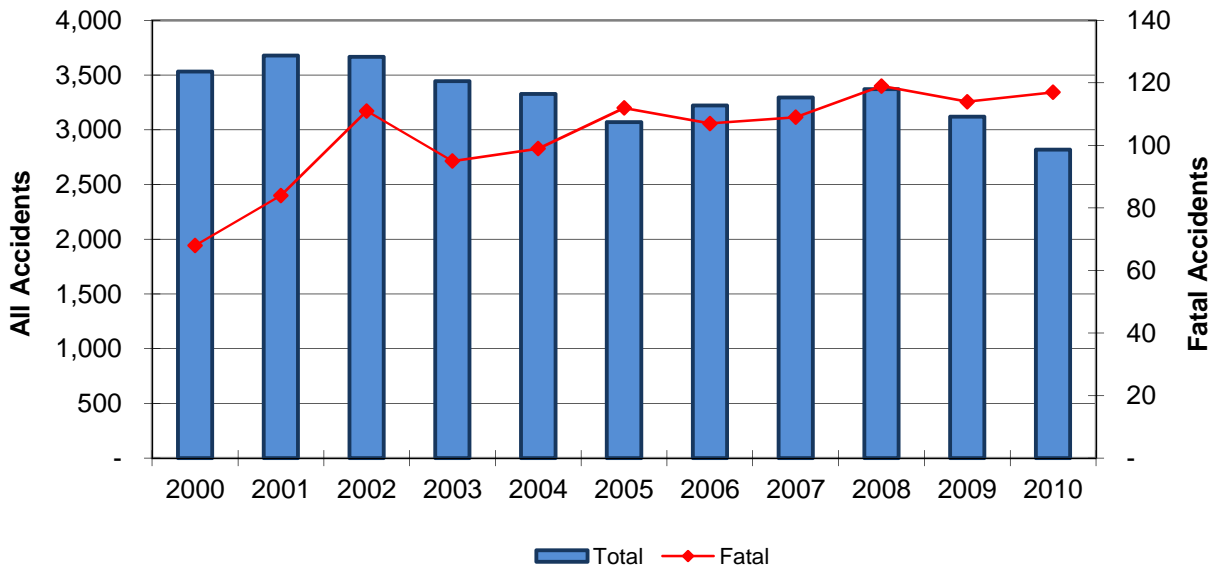
Alcohol-Related Accidents*

2000-2010 Summary

Year	Accidents				People	
	Total	Fatal	Injury	PDO	Deaths	Injuries
2000	3,531	68	1,673	1,790	80	2,533
2001	3,678	84	1,773	1,821	100	2,562
2002	3,666	111	1,635	1,920	129	2,419
2003	3,445	95	1,519	1,831	105	2,285
2004	3,328	99	1,422	1,807	117	2,014
2005	3,069	112	1,361	1,596	119	1,959
2006	3,222	107	1,448	1,667	118	2,062
2007	3,296	109	1,380	1,807	119	1,949
2008	3,370	119	1,389	1,862	130	2,004
2009	3,120	114	1,339	1,667	125	1,921
2010	2,820	117	1,163	1,540	138	1,669
Total	36,545	1,135	16,102	19,308	1,280	23,377



2000-2010 Alcohol-Related Accident Summary



* The alcohol-related accident definition was modified in 2002 and is reflected in all of the data above. See the Definitions pages.

Alcohol-Related Accidents*

Involving Alcohol-Impaired Male Drivers

Year	Accidents				People	
	Total	Fatal	Injury	PDO	Deaths	Injuries
2000	2,969	62	1,426	1,481	74	2,186
2001	3,113	74	1,522	1,517	90	2,240
2002	3,044	101	1,383	1,560	119	2,087
2003	2,814	84	1,279	1,451	94	1,970
2004	2,710	84	1,191	1,435	99	1,721
2005	2,542	98	1,164	1,280	105	1,716
2006	2,631	92	1,202	1,337	100	1,758
2007	2,674	102	1,139	1,433	112	1,644
2008	2,738	109	1,151	1,478	119	1,698
2009	2,558	105	1,115	1,338	116	1,624
2010	2,249	103	933	1,213	124	1,387
Total	30,042	1,014	13,505	15,523	1,152	20,031

Involving Alcohol-Impaired Female Drivers

Year	Accidents				People	
	Total	Fatal	Injury	PDO	Deaths	Injuries
2000	925	19	479	427	25	858
2001	966	26	510	430	29	842
2002	1,017	38	451	528	43	781
2003	995	29	451	515	36	785
2004	982	31	440	511	41	729
2005	862	36	372	454	40	647
2006	900	30	435	435	38	718
2007	919	22	418	479	23	674
2008	934	34	424	476	43	703
2009	887	30	404	453	33	669
2010	891	33	372	486	41	600
Total	10,278	328	4,756	5,194	392	8,006

* The alcohol-related accident definition was modified in 2002 and is reflected in the data above. See the Definitions pages.

Note: There are instances where a female and a male driver were involved in the same accident causing multiple counting in the data above. In addition, drivers whose gender was unknown are excluded.