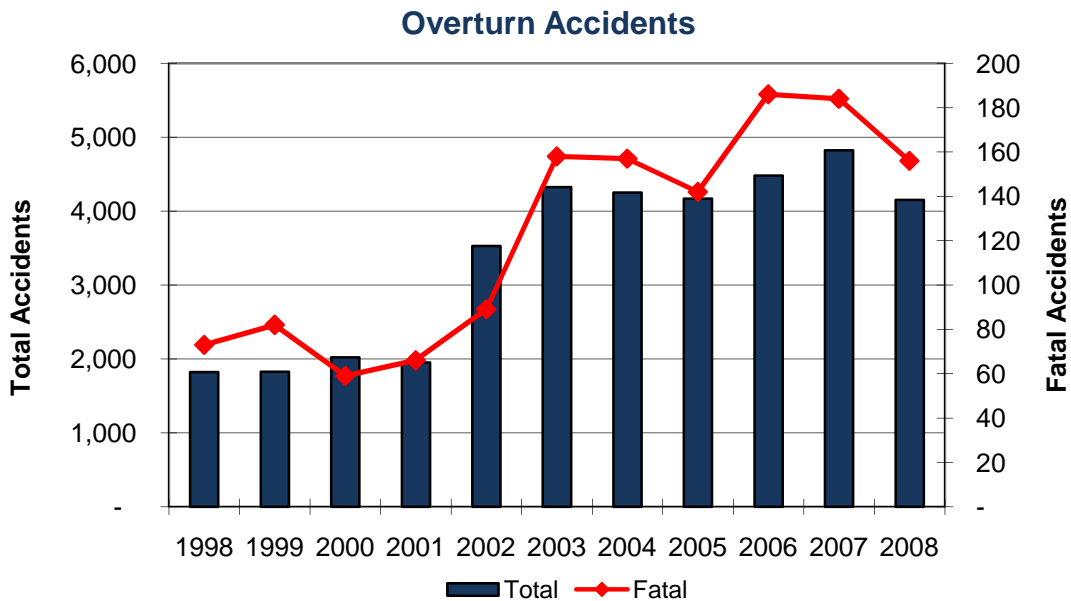


Vehicle Overturn Accidents

Year	Accidents				People	
	Total	Fatal	Injury	PDO	Deaths	Injuries
1998	1,823	73	982	768	75	1,484
1999	1,827	82	1,023	722	93	1,467
2000	2,020	59	1,155	806	63	1,639
2001	1,954	66	1,080	808	75	1,502
2002	3,526	89	1,933	1,504	95	2,726
2003	4,325	158	2,498	1,669	171	3,704
2004	4,253	157	2,545	1,551	183	3,776
2005	4,169	142	2,491	1,536	162	3,548
2006	4,482	186	2,769	1,527	205	4,019
2007	4,821	184	2,838	1,799	200	4,009
2008	4,151	156	2,542	1,453	166	3,603
Total	37,351	1,352	21,856	14,143	1,488	31,477



In 2008, 6.3% of all accidents and 44.8% of all fatal accidents involve vehicles overturning.

Note: The definition for overturn accidents changed in 2003. See definitions page.