

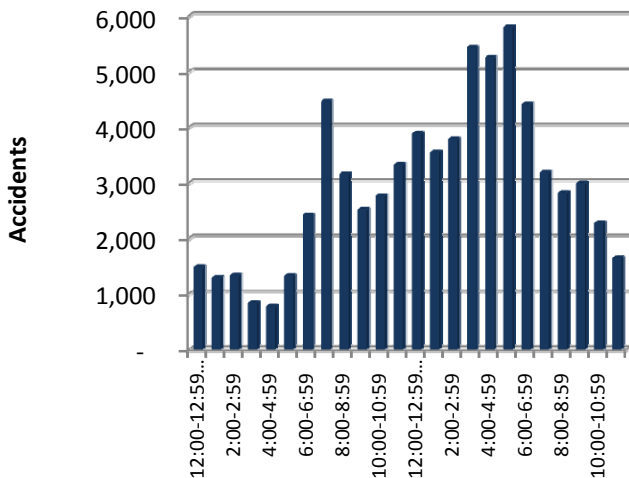
# TIME TRENDS



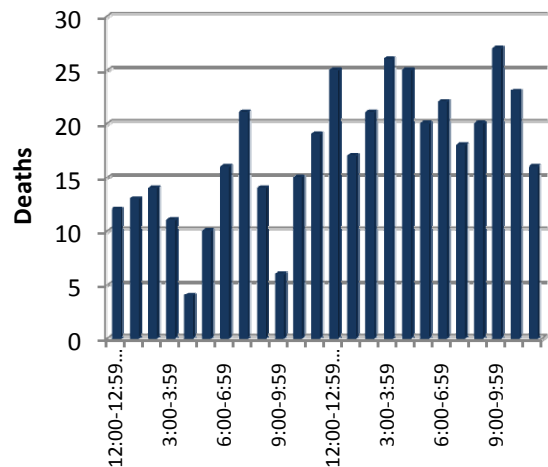
## Hourly

Time	Total Accidents	% of Total	Deaths	% of Deaths
12:00-12:59 AM	1,475	2.1%	12	2.9%
1:00-1:59	1,285	1.8%	13	3.1%
2:00-2:59	1,323	1.9%	14	3.4%
3:00-3:59	826	1.2%	11	2.6%
4:00-4:59	768	1.1%	4	1.0%
5:00-5:59	1,315	1.9%	10	2.4%
6:00-6:59	2,406	3.4%	16	3.8%
7:00-7:59	4,452	6.3%	21	5.0%
8:00-8:59	3,151	4.5%	14	3.4%
9:00-9:59	2,508	3.6%	6	1.4%
10:00-10:59	2,751	3.9%	15	3.6%
11:00-11:59	3,322	4.7%	19	4.6%
12:00-12:59 PM	3,877	5.5%	25	6.0%
1:00-1:59	3,540	5.0%	17	4.1%
2:00-2:59	3,773	5.3%	21	5.0%
3:00-3:59	5,426	7.7%	26	6.3%
4:00-4:59	5,244	7.4%	25	6.0%
5:00-5:59	<b>5,791</b>	<b>8.2%</b>	20	4.8%
6:00-6:59	4,404	6.2%	22	5.3%
7:00-7:59	3,179	4.5%	18	4.3%
8:00-8:59	2,812	4.0%	20	4.8%
9:00-9:59	2,985	4.2%	<b>27</b>	<b>6.5%</b>
10:00-10:59	2,270	3.2%	23	5.5%
11:00-11:59	1,636	2.3%	16	3.8%
Unknown	70	0.1%	1	0.2%
<b>Total</b>	<b>70,589</b>	<b>100%</b>	<b>416</b>	<b>100%</b>

Accidents by Time of Day



Deaths by Time of Day



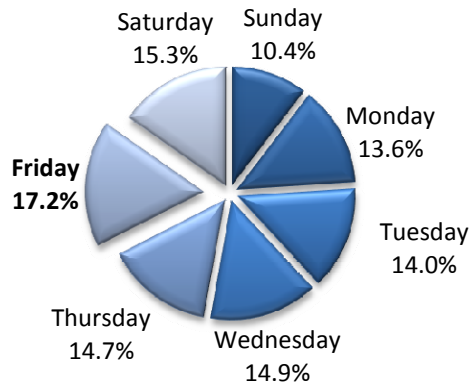
# Time Trends



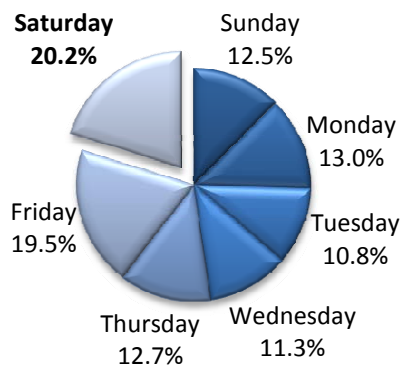
## Daily

Day	Accidents	% of Total	Deaths	% of Total
Sunday	7,324	10.4%	52	12.5%
Monday	9,589	13.6%	54	13.0%
Tuesday	9,893	14.0%	45	10.8%
Wednesday	10,492	14.9%	47	11.3%
Thursday	10,337	14.6%	53	12.7%
Friday	<b>12,128</b>	<b>17.2%</b>	81	19.5%
Saturday	10,790	15.3%	<b>84</b>	<b>20.2%</b>
Unknown	36	0.1%	0	0.0%
<b>Total</b>	<b>70,589</b>	<b>100%</b>	<b>416</b>	<b>100%</b>

## Accidents by Day of Week



## Deaths by Day of Week



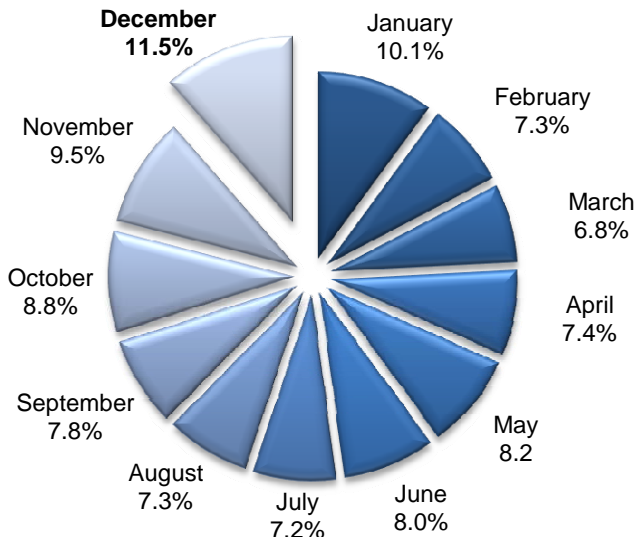
# Time Trends



## Monthly

Month	Accidents	% of Total	Deaths	% of Total
January	7,123	10.1%	34	8.2%
February	5,128	7.3%	23	5.5%
March	4,822	6.8%	28	6.7%
April	5,249	7.4%	45	10.8%
May	5,821	8.2%	32	7.7%
June	5,613	8.0%	36	8.7%
July	5,052	7.2%	39	9.4%
August	5,184	7.3%	35	8.4%
September	5,490	7.8%	33	7.9%
October	6,219	8.8%	34	8.2%
November	6,720	9.5%	32	7.7%
December	8,122	11.5%	45	10.8%
Unknown	46	0.1%	0	0.0%
<b>Total</b>	<b>70,589</b>	<b>100%</b>	<b>416</b>	<b>100%</b>

### Accidents by Month



### Deaths by Month

