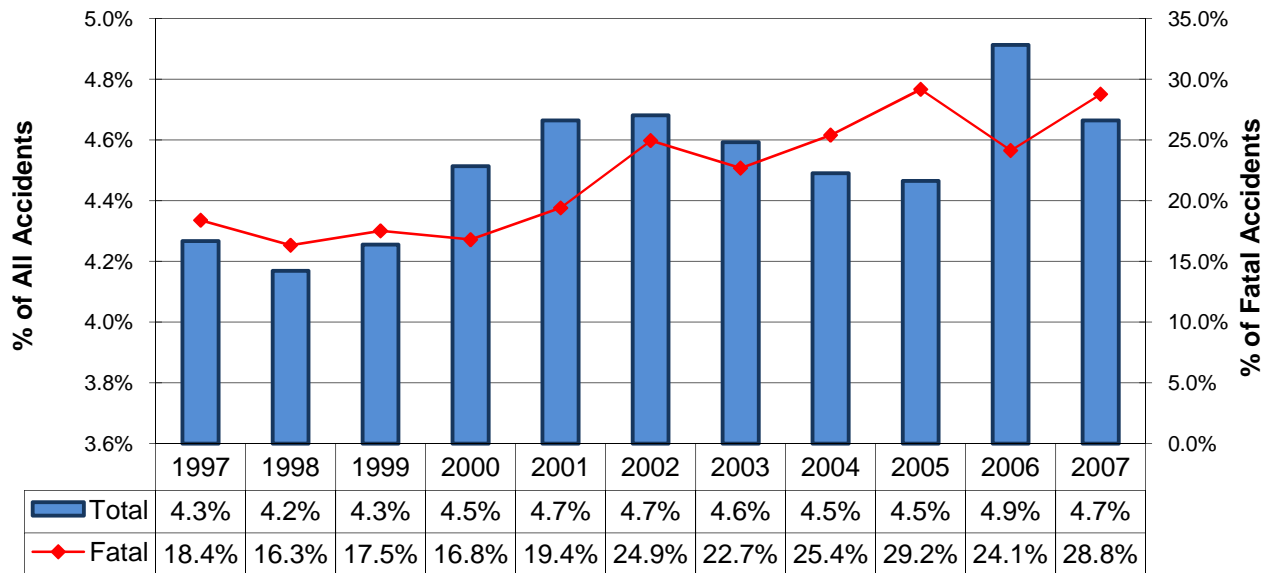


Alcohol-Related Accidents*

Type	Total	Alcohol-Related	% of All
Accidents			
All	70,589	3,292	4.7%
Fatal	379	109	28.8%
Injury	16,228	1,377	8.5%
PDO	53,982	1,806	3.3%
People			
All	164,290	6,041	3.7%
Deaths	416	118	28.4%
Injuries	22,904	1,944	8.5%
Unharmed	140,970	3,979	2.8%



**Alcohol-Related Accident History
1997-2007**



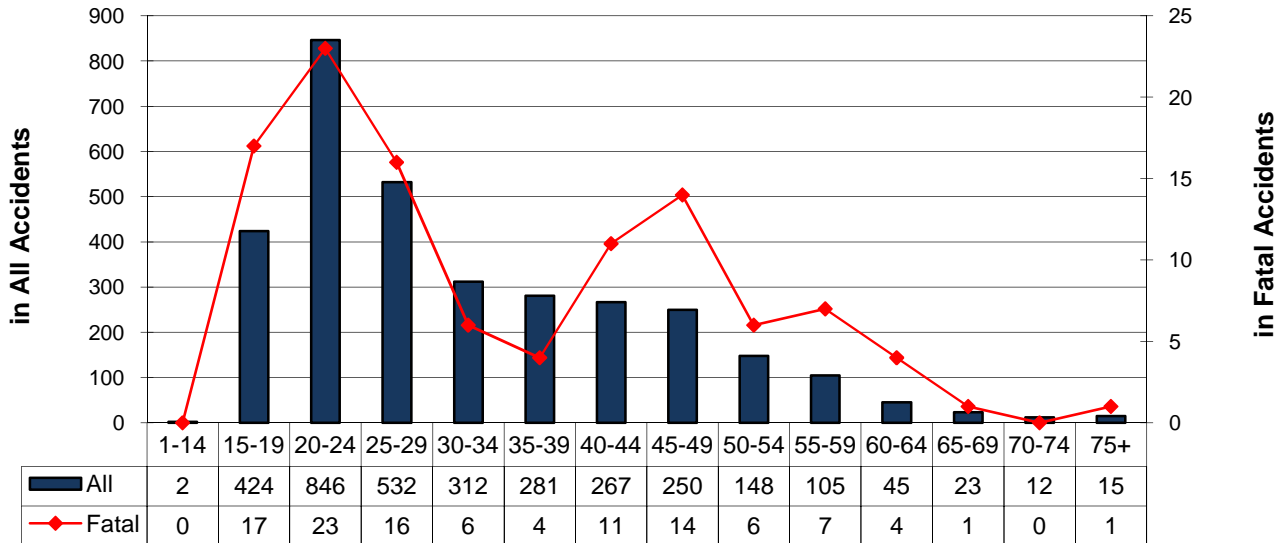
* The alcohol-related accident definition was modified in 2002 and is reflected in all of the data above. See the Definitions pages.

Alcohol-Related Accidents* By Driver Age

Alcohol-Impaired Driver Ages	Accidents				People	
	Total	Fatal	Injury	PDO	Deaths	Injured
Unknown	61	0	13	48	0	17
1-14	2	0	1	1	0	2
15-19	424	17	163	244	19	249
1-20	587	21	233	333	23	341
20-24	846	23	356	467	26	497
25-29	532	16	226	290	17	343
30-34	312	6	143	163	7	211
35-39	281	4	119	158	4	163
40-44	267	11	111	145	13	150
45-49	250	14	120	116	14	153
50-54	148	6	68	74	6	95
55-59	105	7	39	59	7	52
60-64	45	4	17	24	4	24
65-69	23	1	9	13	1	10
70-74	12	0	7	5	0	10
75+	15	1	6	8	1	8



Alcohol-Impaired Drivers by Age Group



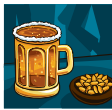
Note: More than one driver per age group can be involved in the same accident.

* The alcohol-related accident definition was modified in 2002 and is reflected in the data above.
See the Definitions pages.

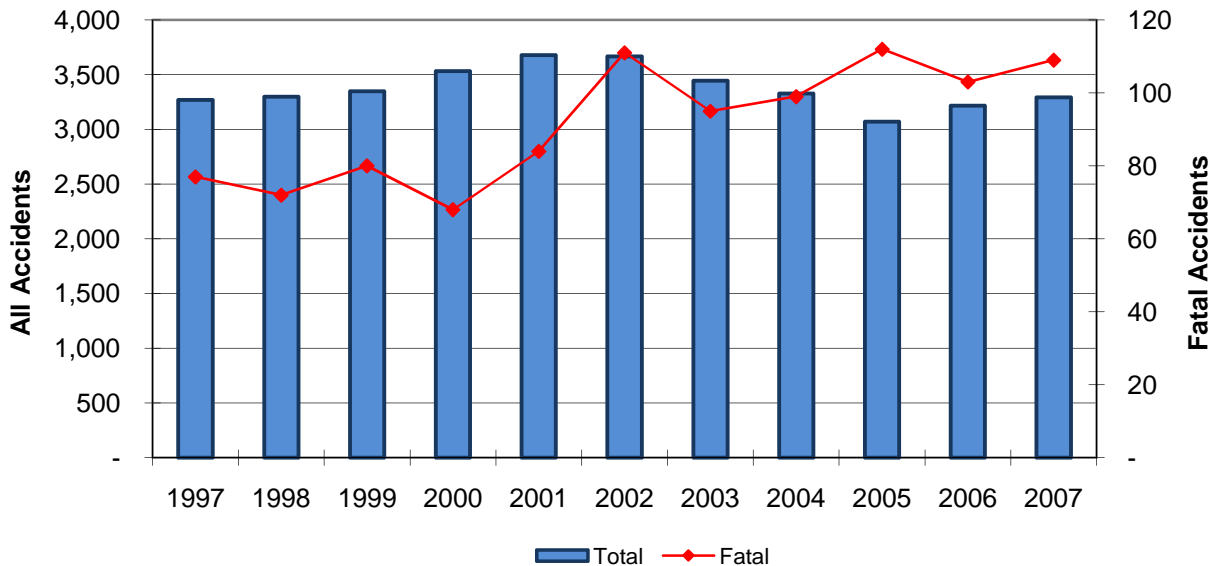
Alcohol-Related Accidents*

1997-2007 Summary

Year	Accidents				People	
	Total	Fatal	Injury	PDO	Deaths	Injuries
1997	3,270	77	1,649	1,544	90	2,551
1998	3,298	72	1,593	1,633	84	2,469
1999	3,349	80	1,611	1,658	94	2,483
2000	3,531	68	1,673	1,790	80	2,533
2001	3,678	84	1,773	1,821	100	2,562
2002	3,666	111	1,635	1,920	129	2,419
2003	3,445	95	1,519	1,831	105	2,285
2004	3,328	99	1,422	1,807	117	2,014
2005	3,069	112	1,361	1,596	119	1,959
2006	3,216	103	1,447	1,666	114	2,061
2007	3,292	109	1,377	1,806	118	1,944
Total	37,142	1,010	17,060	19,072	1,150	25,280



1997-2007 Alcohol-Related Accident Summary



* The alcohol-related accident definition was modified in 2002 and is reflected in all of the data above. See the Definitions pages.

Alcohol-Related Accidents*

Involving Alcohol-Impaired Male Drivers

Year	Accidents				People	
	Total	Fatal	Injury	PDO	Deaths	Injuries
1997	2,650	65	1,336	1,249	78	2,067
1998	2,674	63	1,286	1,325	69	2,005
1999	2,710	66	1,307	1,337	79	2,031
2000	2,845	62	1,363	1,420	74	2,065
2001	3,007	70	1,467	1,470	85	2,124
2002	2,912	96	1,319	1,497	114	1,946
2003	2,691	78	1,214	1,399	86	1,843
2004	2,608	82	1,134	1,392	96	1,604
2005	2,442	95	1,111	1,236	101	1,602
2006	2,517	87	1,146	1,284	95	1,650
2007	2,559	99	1,078	1,382	108	1,524
Total	29,615	863	13,761	14,991	985	20,461

Involving Alcohol-Impaired Female Drivers

Year	Accidents				People	
	Total	Fatal	Injury	PDO	Deaths	Injuries
1997	605	12	314	279	12	497
1998	608	10	312	286	16	483
1999	629	14	313	302	15	478
2000	657	6	317	334	6	488
2001	650	15	313	322	16	452
2002	735	16	326	393	16	488
2003	726	17	310	399	19	459
2004	721	17	299	405	21	430
2005	610	17	249	344	19	354
2006	657	17	296	344	20	409
2007	704	11	300	393	11	423
Total	7,302	152	3,349	3,801	171	4,961

* The alcohol-related accident definition was modified in 2002 and is reflected in the data above. See the Definitions pages.

Note: There are instances where a female and a male driver were involved in the same accident causing multiple counting in the data above. In addition, drivers whose gender was unknown are excluded.