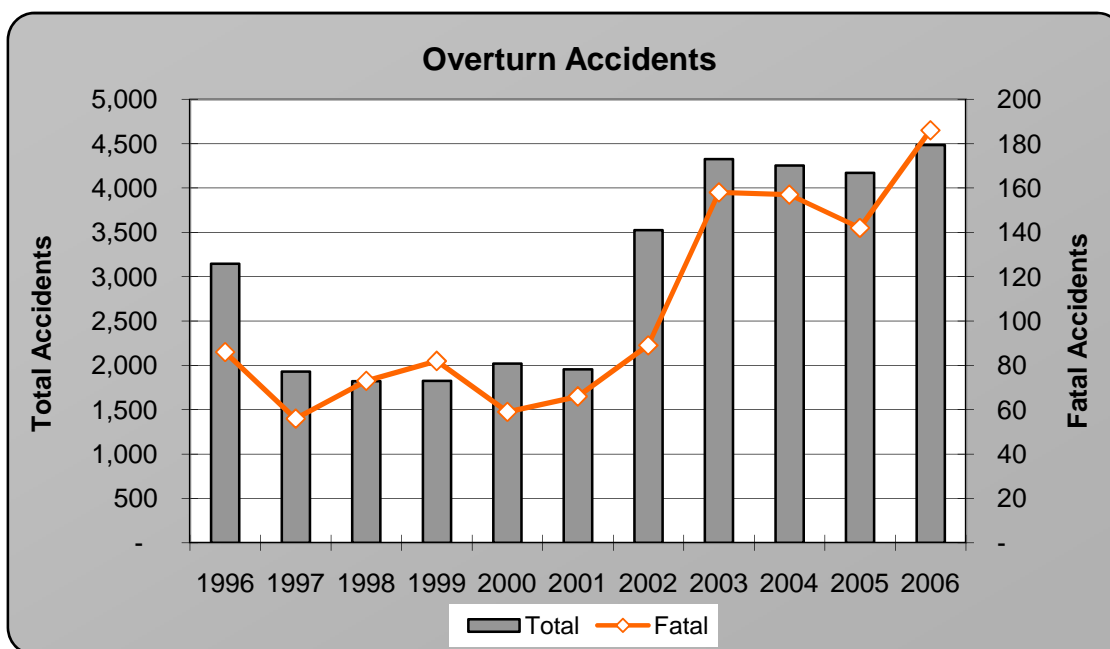


## VEHICLE OVERTURN ACCIDENTS

Year	Accidents				People	
	Total	Fatal	Injury	PDO*	Deaths	Injuries
1996	3,144	86	1,720	1,338	91	2,607
1997	1,930	56	1,044	830	61	1,514
1998	1,823	73	982	768	75	1,484
1999	1,827	82	1,023	722	93	1,467
2000	2,020	59	1,155	806	63	1,639
2001	1,954	66	1,080	808	75	1,502
2002	3,526	89	1,933	1,504	95	2,726
2003	4,325	158	2,498	1,669	171	3,704
2004	4,253	157	2,545	1,551	183	3,776
2005	4,171	142	2,493	1,536	162	3,552
2006	4,483	186	2,770	1,527	205	4,020
<b>Total:</b>	<b>33,456</b>	<b>1,154</b>	<b>19,243</b>	<b>13,059</b>	<b>1,274</b>	<b>27,991</b>



**In 2006, 6.8% of all accidents and 43.6% of all fatal accidents involve vehicles overturning.**

\*PDO - Property Damage Only

Note: The definition for overturn accidents changed in 2003. See definitions page.