

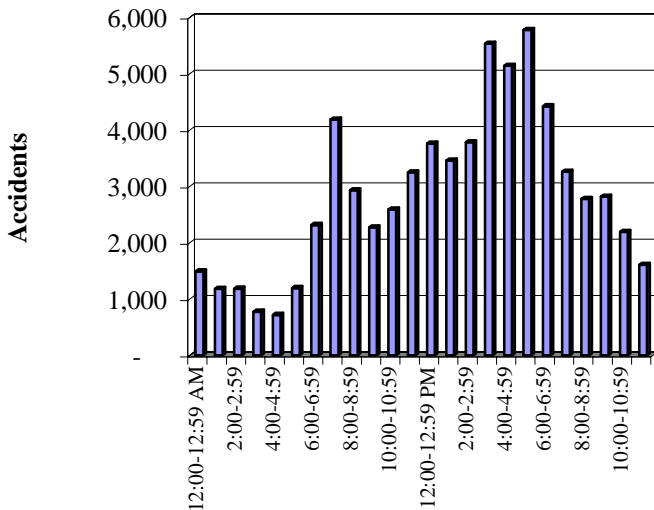


TIME TRENDS

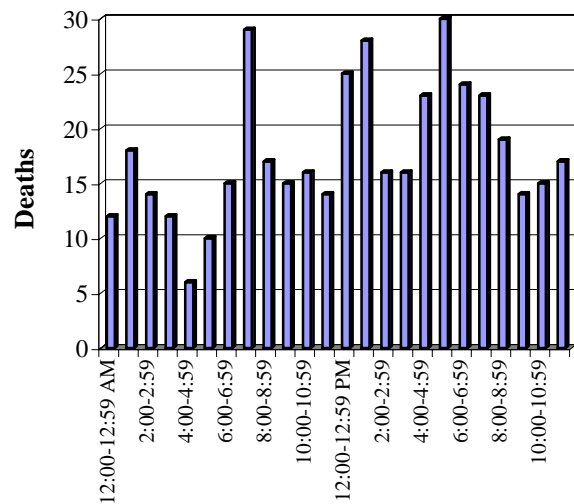
HOURLY

Time	Total Accidents	% of Total	Deaths	% of Deaths
12:00-12:59 AM	1,492	2.2%	12	2.8%
1:00-1:59	1,184	1.7%	18	4.2%
2:00-2:59	1,185	1.7%	14	3.3%
3:00-3:59	777	1.1%	12	2.8%
4:00-4:59	720	1.0%	6	1.4%
5:00-5:59	1,197	1.7%	10	2.3%
6:00-6:59	2,315	3.4%	15	3.5%
7:00-7:59	4,189	6.1%	29	6.8%
8:00-8:59	2,932	4.3%	17	4.0%
9:00-9:59	2,273	3.3%	15	3.5%
10:00-10:59	2,591	3.8%	16	3.7%
11:00-11:59	3,248	4.7%	14	3.3%
12:00-12:59 PM	3,762	5.5%	25	5.8%
1:00-1:59	3,458	5.0%	28	6.5%
2:00-2:59	3,785	5.5%	16	3.7%
3:00-3:59	5,532	8.1%	16	3.7%
4:00-4:59	5,143	7.5%	23	5.4%
5:00-5:59	5,777	8.4%	30	7.0%
6:00-6:59	4,423	6.4%	24	5.6%
7:00-7:59	3,260	4.7%	23	5.4%
8:00-8:59	2,777	4.0%	19	4.4%
9:00-9:59	2,817	4.1%	14	3.3%
10:00-10:59	2,195	3.2%	15	3.5%
11:00-11:59	1,608	2.3%	17	4.0%
Unknown	35	0.1%	0	0.0%
Total	68,675	100%	428	100%

Accidents by Time of Day



Deaths by Time of Day



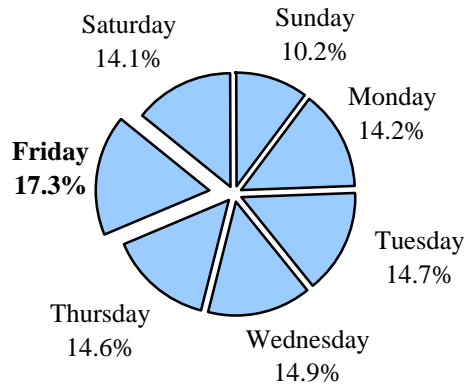


TIME TRENDS

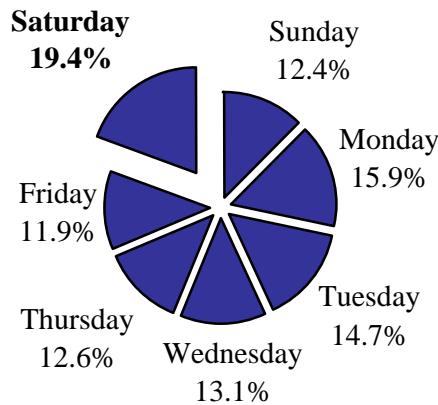
DAILY

Day	Accidents	% of Total	Deaths	% of Total
Sunday	7,014	10.2%	53	12.4%
Monday	9,746	14.2%	68	15.9%
Tuesday	10,112	14.7%	63	14.7%
Wednesday	10,210	14.9%	56	13.1%
Thursday	10,002	14.6%	54	12.6%
Friday	11,857	17.3%	51	11.9%
Saturday	9,702	14.1%	83	19.4%
Unknown	32	0.0%	0	0.0%
Total	68,675	100%	428	100%

Accidents by Day of Week



Deaths by Day of Week



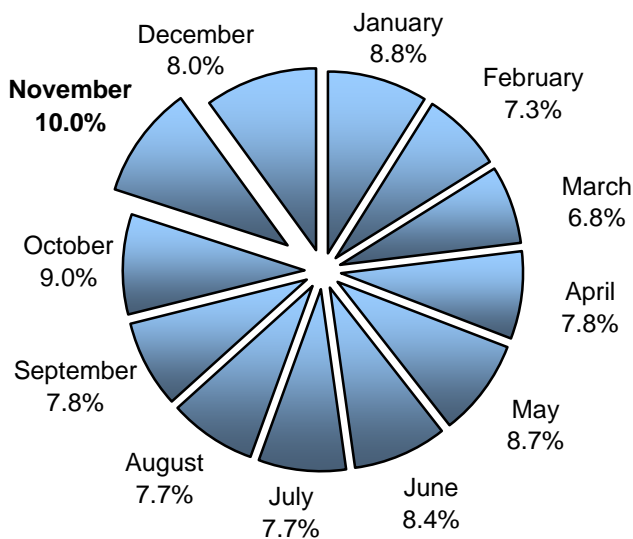


TIME TRENDS

MONTHLY

Month	Accidents	% of Total	Deaths	% of Total
January	6,037	8.8%	37	8.6%
February	5,011	7.3%	25	5.8%
March	4,685	6.8%	35	8.2%
April	5,353	7.8%	42	9.8%
May	5,957	8.7%	43	10.0%
June	5,746	8.4%	39	9.1%
July	5,315	7.7%	28	6.5%
August	5,314	7.7%	39	9.1%
September	5,328	7.8%	28	6.5%
October	6,174	9.0%	41	9.6%
November	6,885	10.0%	33	7.7%
December	6,820	9.9%	38	8.9%
Unknown	50	0.1%	0	0.0%
Total	68,675	100%	428	100%

Accidents by Month



Deaths by Month

