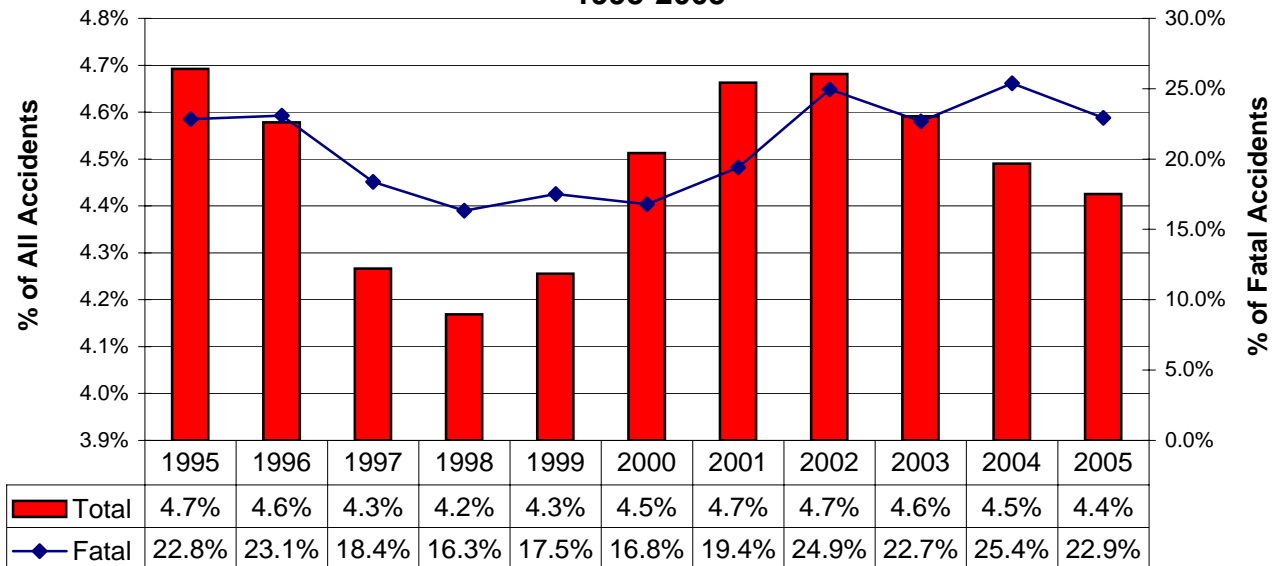


# ALCOHOL-RELATED ACCIDENTS\*

Type	Total	Alcohol-Related	% of All
<b>Accidents</b>			
All	68,675	3,039	4.4%
Fatal	384	88	22.9%
Injury	16,185	1,356	8.4%
PDO	52,106	1,595	3.1%
<b>People</b>			
All	162,541	5,857	3.6%
Deaths	428	93	21.7%
Injuries	22,723	1,932	8.5%
Unharmmed	139,390	3,832	2.7%



**Alcohol-Related Accident History  
1995-2005**



\* The alcohol-related accident definition was modified in 2002 and is reflected in all of the data above. See the Definitions pages.

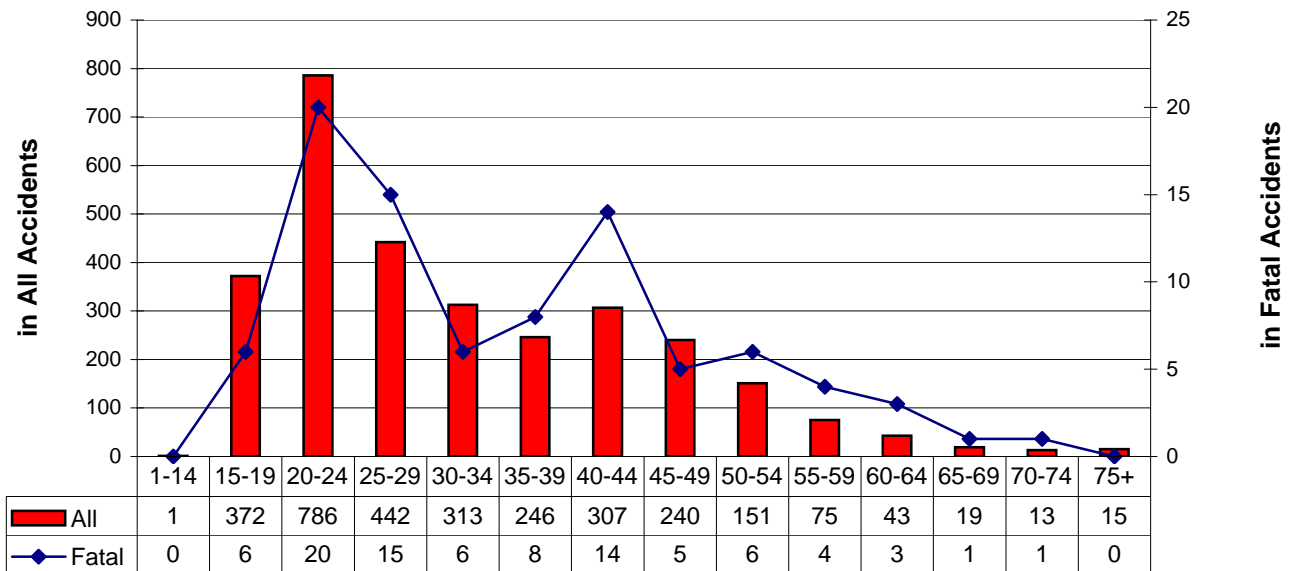
# ALCOHOL-RELATED ACCIDENTS\*

## By Driver Age



Alcohol-Impaired Driver Ages	Accidents				People	
	Total	Fatal	Injury	PDO**	Deaths	Injured
Unknown	60	0	22	38	0	34
1-14	1	0	0	1	0	0
15-19	372	6	187	179	7	283
1-20	519	9	255	255	10	390
20-24	786	20	342	424	22	515
25-29	442	15	179	248	15	257
30-34	313	6	136	171	6	183
35-39	246	8	112	126	8	159
40-44	307	14	131	162	14	187
45-49	240	5	115	120	6	145
50-54	151	6	78	67	6	110
55-59	75	4	37	34	4	49
60-64	43	3	23	17	4	28
65-69	19	1	7	11	1	13
70-74	13	1	8	4	1	13
75+	15	0	6	9	0	6

Alcohol-Impaired Drivers By Age Group



**Note:** More than one driver per age group can be involved in the same accident.

\* The alcohol-related accident definition was modified in 2002 and is reflected in the data above.

See the Definitions pages.

\*\* PDO - Property Damage Only

**ALCOHOL-RELATED ACCIDENTS\*****Involving Alcohol-Impaired Male Drivers**

Year	Accidents				People	
	Total	Fatal	Injury	PDO**	Deaths	Injuries
1995	2,719	71	1,327	1,321	79	2,054
1996	2,706	81	1,371	1,254	94	2,137
1997	2,650	65	1,336	1,249	78	2,067
1998	2,674	63	1,286	1,325	69	2,005
1999	2,710	66	1,307	1,337	79	2,031
2000	2,845	62	1,363	1,420	74	2,065
2001	3,007	70	1,467	1,470	85	2,124
2002	2,912	96	1,319	1,497	114	1,946
2003	2,691	78	1,214	1,399	86	1,843
2004	2,608	82	1,134	1,392	96	1,604
2005	2,422	79	1,108	1,235	84	1,584
<b>11-Year Total:</b>	<b>29,944</b>	<b>813</b>	<b>14,232</b>	<b>14,899</b>	<b>938</b>	<b>21,460</b>

**Involving Alcohol-Impaired Female Drivers**

Year	Accidents				People	
	Total	Fatal	Injury	PDO**	Deaths	Injuries
1995	557	18	278	261	21	459
1996	648	21	347	280	23	552
1997	605	12	314	279	12	497
1998	608	10	312	286	16	483
1999	629	14	313	302	15	478
2000	657	6	317	334	6	488
2001	650	15	313	322	16	452
2002	735	16	326	393	16	488
2003	726	17	310	399	19	459
2004	720	17	298	405	21	429
2005	601	10	247	344	11	345
<b>11-Year Total:</b>	<b>7,136</b>	<b>156</b>	<b>3,375</b>	<b>3,605</b>	<b>176</b>	<b>5,130</b>

\* The alcohol-related accident definition

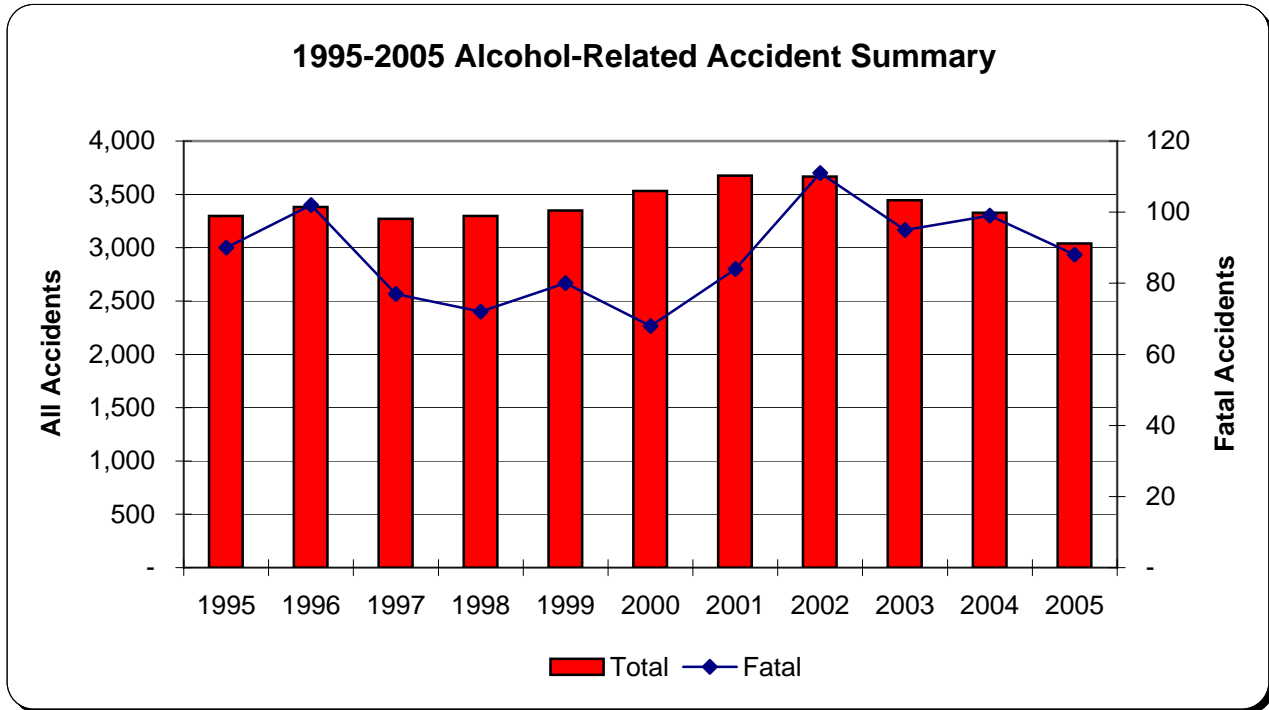
\*\* PDO - Property Damage Only

**Note:** There are instances where a female and a male driver were involved in the same accident causing multiple counting in the data above. In addition, drivers whose gender was unknown are excluded.

# ALCOHOL-RELATED ACCIDENTS\*

## 1995-2005 Summary

Year	Accidents				People	
	Total	Fatal	Injury	PDO**	Deaths	Injuries
1995	3,297	90	1,603	1,604	101	2,504
1996	3,382	102	1,719	1,561	117	2,688
1997	3,270	77	1,649	1,544	90	2,551
1998	3,298	72	1,593	1,633	84	2,469
1999	3,349	80	1,611	1,658	94	2,483
2000	3,531	68	1,673	1,790	80	2,533
2001	3,677	84	1,773	1,820	100	2,562
2002	3,666	111	1,635	1,920	129	2,419
2003	3,444	95	1,519	1,830	105	2,285
2004	3,328	99	1,422	1,807	117	2,014
2005	3,039	88	1,356	1,595	93	1,932
<b>11-Year Total:</b>	<b>37,281</b>	<b>966</b>	<b>17,553</b>	<b>18,762</b>	<b>1,110</b>	<b>26,440</b>



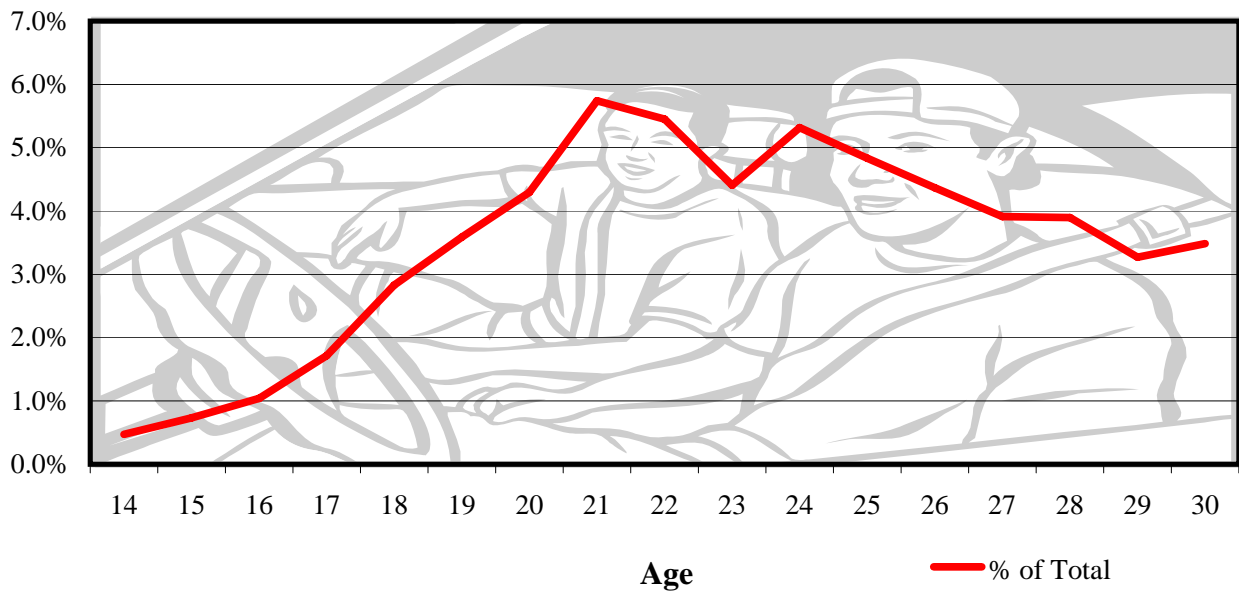
\* The alcohol-related accident definition was modified in 2002 and is reflected in all of the data  
See the Definitions pages.

\*\* PDO - Property Damage Only

## Driver Age Summary Ages 14-30

Driver Age	All Accidents Per Driver Age					People		ALCOHOL-RELATED		
	Total	% of All*	Fatal	Injury	PDO**	Deaths	Injuries	Impaired Drivers	Accidents	% of Total
14	212	0.29%	2	70	140	2	120	1	1	0.5%
15	1,090	1.47%	5	316	769	6	479	8	8	0.7%
16	3,936	5.31%	15	1,052	2,869	20	1,624	41	41	1.0%
17	4,020	5.42%	16	1,079	2,925	21	1,624	69	69	1.7%
18	4,241	5.72%	14	1,144	3,083	16	1,710	121	120	2.8%
19	3,819	5.15%	14	985	2,820	15	1,421	137	137	3.6%
20	3,469	4.68%	11	906	2,552	13	1,281	149	149	4.3%
21	3,397	4.58%	14	886	2,497	14	1,266	195	195	5.7%
22	3,174	4.28%	20	878	2,276	22	1,270	174	173	5.5%
23	2,950	3.98%	13	733	2,204	15	1,071	130	130	4.4%
24	2,708	3.65%	9	656	2,043	9	948	144	144	5.3%
25	2,482	3.35%	9	631	1,842	10	920	120	120	4.8%
26	2,198	2.97%	9	564	1,625	9	806	96	96	4.4%
27	2,147	2.90%	10	534	1,603	10	784	84	84	3.9%
28	2,078	2.80%	8	527	1,543	10	740	81	81	3.9%
29	1,866	2.52%	17	472	1,377	19	694	61	61	3.3%
30	1,865	2.52%	9	473	1,383	10	693	65	65	3.5%

**Percentage of Alcohol-Related Accidents to All Accidents by Driver Age**



\* % of All - Divides all accidents per age by all accidents for Kansas in 2005.

\*\*PDO - Property Damage Only