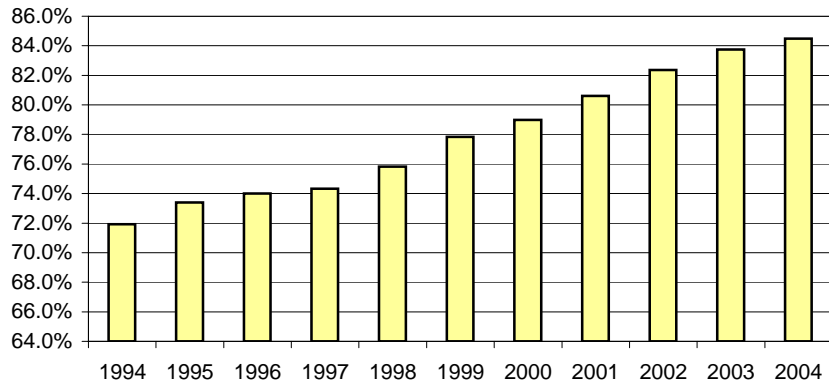


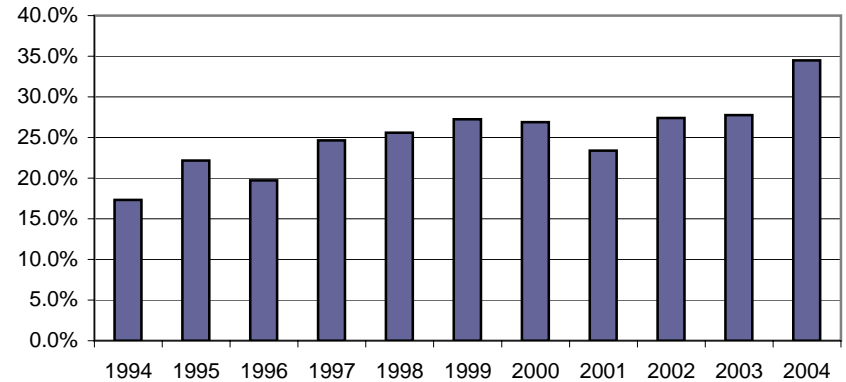
All Occupants* in Accidents - Safety Restraint Usage** History

Year	Occupants in Accidents	Occupants Using Safety Belts	% Using Safety Belts	Deaths	Using Safety Belts	% of Use	Injuries	Using Safety Belts	% of Use	Unharmed or Unknown	Using Safety Belts	% of Use
1994	165,050	118,695	71.9%	387	67	17.3%	28,404	17,033	60.0%	136,259	101,595	74.6%
1995	172,905	126,913	73.4%	379	84	22.2%	28,460	17,755	62.4%	144,066	109,074	75.7%
1996	179,352	132,722	74.0%	441	87	19.7%	29,305	18,299	62.4%	149,606	114,336	76.4%
1997	185,016	137,511	74.3%	426	105	24.6%	29,878	18,964	63.5%	154,712	118,442	76.6%
1998	191,830	145,461	75.8%	422	108	25.6%	29,530	19,040	64.5%	161,878	126,313	78.0%
1999	189,573	147,565	77.8%	481	131	27.2%	28,897	19,235	66.6%	160,195	128,199	80.0%
2000	185,182	146,272	79.0%	409	110	26.9%	27,374	18,615	68.0%	157,399	127,547	81.0%
2001	184,931	149,085	80.6%	436	102	23.4%	27,158	18,872	69.5%	157,337	130,111	82.7%
2002	182,785	150,526	82.4%	438	120	27.4%	25,295	18,073	71.4%	157,052	132,333	84.3%
2003	172,591	144,526	83.7%	400	111	27.8%	23,081	16,979	73.6%	149,110	127,436	85.5%
2004	170,154	143,762	84.5%	400	138	34.5%	21,924	16,453	75.0%	147,830	127,171	86.0%
11-Year Total	1,979,369	1,543,038	78.0%	4,619	1,163	25.2%	299,306	199,318	66.6%	1,675,444	1,342,557	80.1%

Percent of Occupant Safety Belt Use
All ages



Percent of Occupant Safety Belt Use
Deaths: All Ages



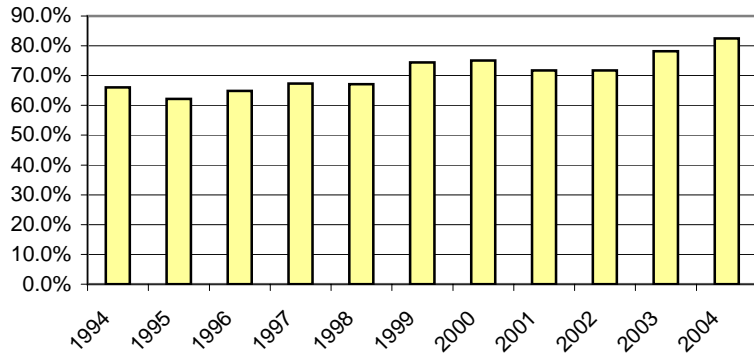
* Excludes occupants in vehicle body types: motorcycle, moped, farm equipment, all-terrain-vehicle, bus, train, emergency vehicle, other, and unknown

** Excludes airbag only, helmet, eye protection, and unknown restraint use.

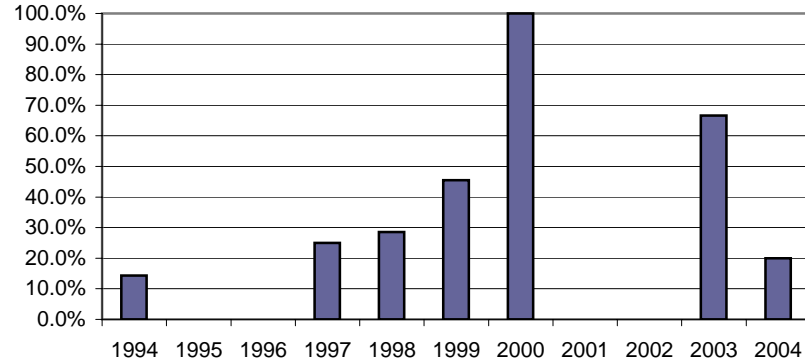
Occupants* Birth-3 Years Old in Accidents - Safety Belt Usage** History

Child Safety Seat Required by Law	Occupants in Accidents	Occupants Using Child Safety Seat	% of Use	Deaths	Using Child Safety Seat	% of Use	Injuries	Using Child Safety Seat	% of Use	Unharmed or Unknown	Using Child Safety Seat	% of Use
1994	5,502	3,634	66.0%	7	1	14.3%	462	254	55.0%	5,033	3,379	67.1%
1995	5,632	3,500	62.1%	3	-	0.0%	516	251	48.6%	5,113	3,249	63.5%
1996	5,697	3,697	64.9%	1	-	0.0%	534	273	51.1%	5,162	3,424	66.3%
1997	5,606	3,776	67.4%	4	1	25.0%	522	284	54.4%	5,080	3,491	68.7%
1998	5,903	3,960	67.1%	7	2	28.6%	495	269	54.3%	5,401	3,689	68.3%
1999	5,879	4,375	74.4%	11	5	45.5%	509	303	59.5%	5,359	4,067	75.9%
2000	5,593	4,198	75.1%	2	2	100.0%	472	302	64.0%	5,119	3,894	76.1%
2001	5,513	3,958	71.8%	1	-	0.0%	455	255	56.0%	5,057	3,703	73.2%
2002	5,377	3,857	71.7%	6	-	0.0%	441	235	53.3%	4,930	3,622	73.5%
2003	4,992	3,901	78.1%	6	4	66.7%	420	286	68.1%	4,566	3,611	79.1%
2004	4,986	4,111	82.5%	10	2	20.0%	340	255	75.0%	4,636	3,854	83.1%
11-Year Total	60,680	42,967	70.8%	58	17	29.3%	5,166	2,967	57.4%	55,456	39,983	72.1%

Percent of Occupant Safety Seat Use Birth-3 Years Old



Percent of Occupant Safety Seat Use Deaths: Birth-3 Years Old



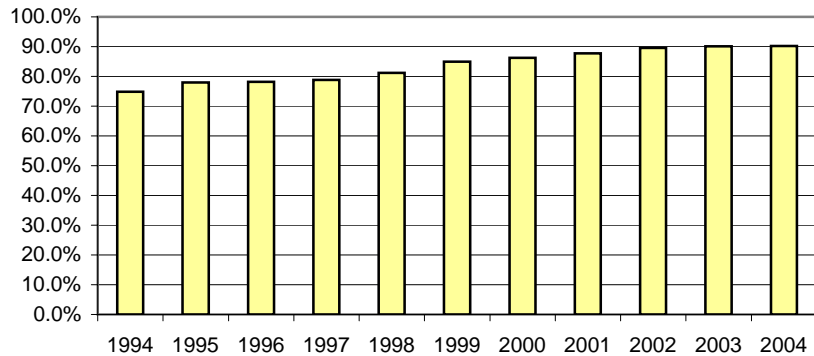
* Excludes occupants in vehicle body types: motorcycle, moped, farm equipment, all-terrain-vehicle, bus, train, emergency vehicle, other, and unknow

** Restraint usage: infant, child, or booster seat, with or without airbag deployment.

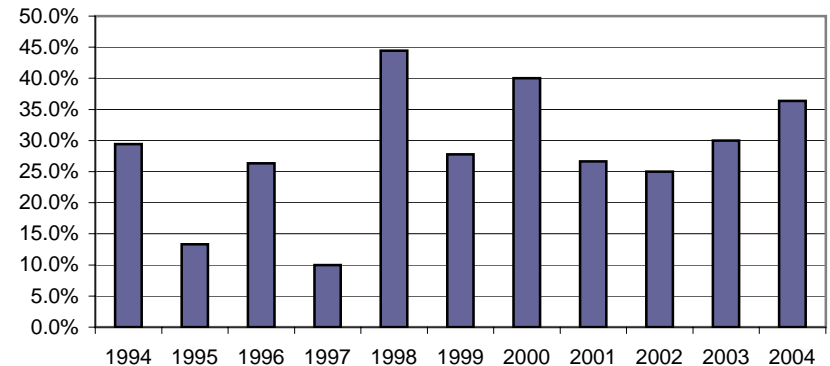
Occupants* 4-13 Years Old in Accidents - Safety Belt Usage** History

Restraint Required by Law for Children Age 4-13	Occupants in Accidents	Occupants Using Safety Belts	% of Use	Deaths	Using Safety Belts	% of Use	Injuries	Using Safety Belts	% of Use	Unharmed or Unknown	Using Safety Belts	% of Use
1994	12,799	9,575	74.8%	17	5	29.4%	1,856	1,015	54.7%	10,926	8,555	78.3%
1995	13,198	10,283	77.9%	15	2	13.3%	1,829	1,094	59.8%	11,354	9,187	80.9%
1996	13,439	10,507	78.2%	19	5	26.3%	1,915	1,120	58.5%	11,505	9,382	81.5%
1997	13,706	10,800	78.8%	10	1	10.0%	1,912	1,154	60.4%	11,784	9,645	81.8%
1998	14,258	11,574	81.2%	18	8	44.4%	1,909	1,216	63.7%	12,331	10,350	83.9%
1999	13,789	11,710	84.9%	18	5	27.8%	1,776	1,195	67.3%	11,995	10,510	87.6%
2000	12,780	11,017	86.2%	15	6	40.0%	1,621	1,140	70.3%	11,144	9,871	88.6%
2001	12,813	11,241	87.7%	15	4	26.7%	1,653	1,188	71.9%	11,145	10,049	90.2%
2002	12,415	11,117	89.5%	12	3	25.0%	1,438	1,079	75.0%	10,965	10,035	91.5%
2003	11,733	10,577	90.1%	10	3	30.0%	1,270	990	78.0%	10,453	9,584	91.7%
2004	11,376	10,257	90.2%	11	4	36.4%	1,160	868	74.8%	10,205	9,385	92.0%
11-Year Total	142,306	118,658	83.4%	160	46	28.8%	18,339	12,059	65.8%	123,807	106,553	86.1%

Percent of Occupant Safety Equipment Use
4-13 Years Old



Percent of Occupant Safety Equipment Use
Deaths: 4-13 Years Old



* Excludes occupants in vehicle body types: motorcycle, moped, farm equipment, all-terrain-vehicle, bus, train, emergency vehicle, other, and unknown

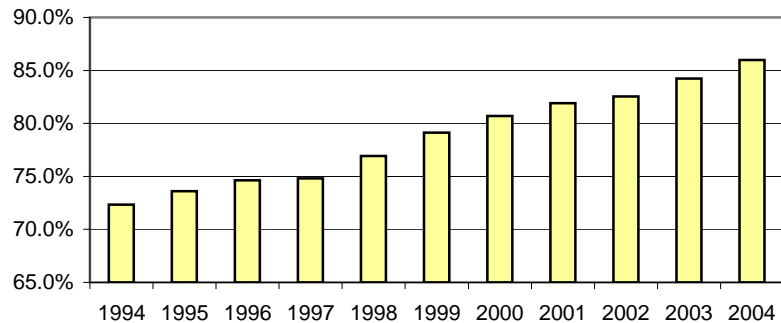
** Excludes airbag only, helmet, eye protection, and unknown restraint use.

All Occupants* in Accidents - Safety Belt Usage** History

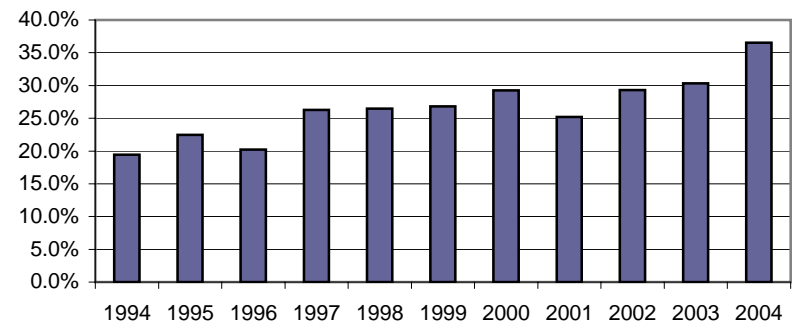
--Where the Speed Limit is Greater Than 45 mph--

	Occupants in Accidents	Occupants Using Safety Belts	% of Use	Deaths	Using Safety Belts	% of Use	Injuries	Using Safety Belts	% of Use	Unharmed or Unknown	Using Safety Belts	% of Use
1994	43,482	31,452	72.3%	293	57	19.5%	9,203	5,179	56.3%	33,986	26,216	77.1%
1995	46,801	34,441	73.6%	267	60	22.5%	9,343	5,440	58.2%	37,191	28,941	77.8%
1996	52,620	39,275	74.6%	356	72	20.2%	10,661	6,215	58.3%	41,603	32,988	79.3%
1997	51,826	38,768	74.8%	312	82	26.3%	10,290	6,054	58.8%	41,224	32,632	79.2%
1998	55,148	42,417	76.9%	321	85	26.5%	10,306	6,154	59.7%	44,521	36,178	81.3%
1999	54,387	43,029	79.1%	362	97	26.8%	10,060	6,366	63.3%	43,965	36,566	83.2%
2000	51,475	41,539	80.7%	318	93	29.2%	9,299	6,039	64.9%	41,858	35,407	84.6%
2001	54,271	44,450	81.9%	337	85	25.2%	9,687	6,359	65.6%	44,247	38,006	85.9%
2002	53,665	44,304	82.6%	348	102	29.3%	9,602	6,358	66.2%	43,715	37,844	86.6%
2003	52,026	43,825	84.2%	310	94	30.3%	8,923	6,155	69.0%	42,793	37,576	87.8%
2004	52,461	45,106	86.0%	331	121	36.6%	8,625	6,116	70.9%	43,505	38,869	89.3%
11-Year Total	568,162	448,606	79.0%	3,555	948	26.7%	105,999	66,435	62.7%	458,608	381,223	83.1%

Percent of Occupant Safety Belt Usage
Where the Speed Limit > 45



Deaths - Percent of Safety Belt Usage
Deaths: Where the Speed Limit > 45



* Excludes occupants in vehicle body types: motorcycle, moped, farm equipment, all-terrain-vehicle, bus, train, emergency vehicle, other, and unknown. In addition, occupants in accidents where the "on road" speed limit is unknown are excluded.

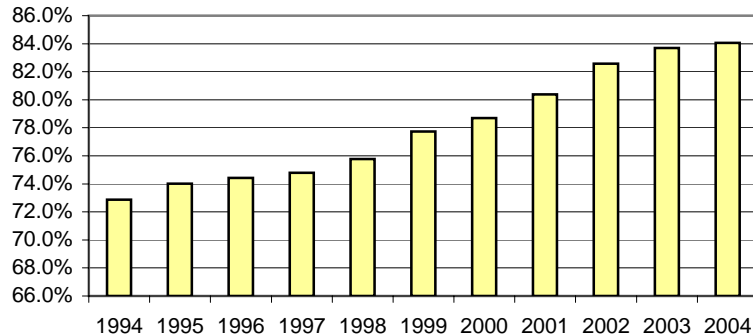
** Excludes airbag only, helmet, eye protection, and unknown restraint use.

All Occupants* in Accidents - Safety Belt Usage** History

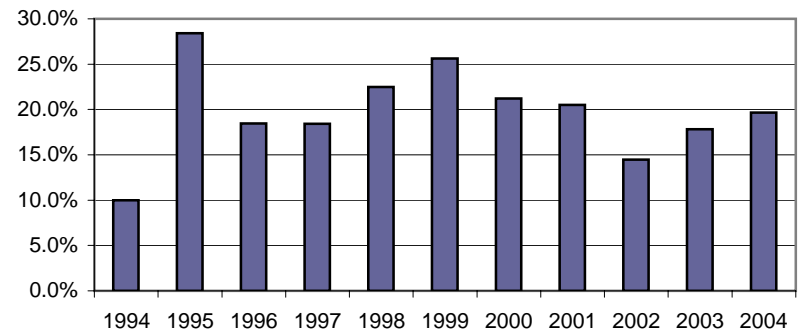
--Where the Speed Limit was Less Than or Equal to 45 mph--

	Occupants in Accidents	Occupants Using Safety Belts	% of Use	Deaths	Using Safety Belts	% of Use	Injuries	Using Safety Belts	% of Use	Unharmed or Unknown	Using Safety Belts	% of Use
1994	110,581	80,580	72.9%	70	7	10.0%	17,415	11,047	63.4%	93,096	69,526	74.7%
1995	117,622	87,057	74.0%	81	23	28.4%	17,745	11,627	65.5%	99,796	75,407	75.6%
1996	118,304	88,038	74.4%	65	12	18.5%	17,355	11,429	65.9%	100,884	76,597	75.9%
1997	121,064	90,550	74.8%	76	14	18.4%	17,761	11,890	66.9%	103,227	78,646	76.2%
1998	127,843	96,863	75.8%	80	18	22.5%	17,837	12,081	67.7%	109,926	84,764	77.1%
1999	127,243	98,919	77.7%	82	21	25.6%	17,678	12,165	68.8%	109,483	86,733	79.2%
2000	123,290	97,020	78.7%	66	14	21.2%	16,580	11,628	70.1%	106,644	85,378	80.1%
2001	124,821	100,330	80.4%	78	16	20.5%	16,677	12,002	72.0%	108,066	88,312	81.7%
2002	123,328	101,827	82.6%	76	11	14.5%	14,967	11,226	75.0%	108,285	90,590	83.7%
2003	114,204	95,593	83.7%	72	12	17.8%	13,310	10,189	76.5%	100,822	85,392	84.7%
2004	112,042	94,179	84.1%	56	11	19.6%	12,548	9,804	78.1%	99,438	84,364	84.8%
11-Year Total	1,320,342	1,030,956	78.1%	802	159	19.8%	179,873	125,088	69.5%	1,139,667	905,709	79.5%

Percent of Occupant Safety Belt Usage
Where the Speed Limit <= 45



Percent of Occupant Safety Belt Usage
Deaths: Where the Speed Limit <= 45



* Excludes occupants in vehicle body types: motorcycle, moped, farm equipment, all-terrain-vehicle, bus, train, emergency vehicle, other, and unknown. In addition, occupants in accidents where the "on road" speed limit is unknown are excluded.

** Excludes airbag only, helmet, eye protection, and unknown restraint use.