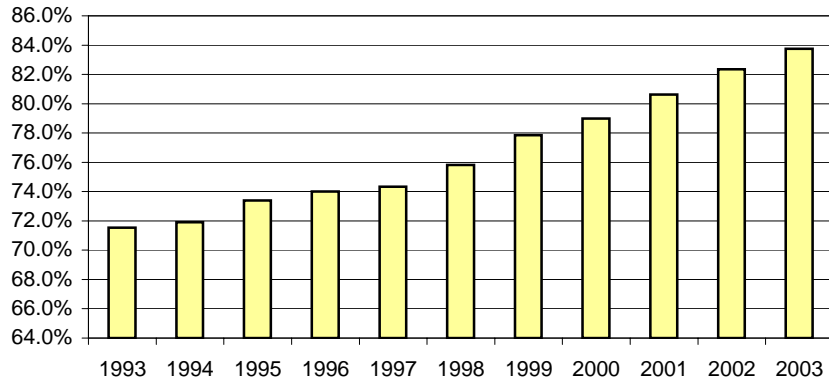


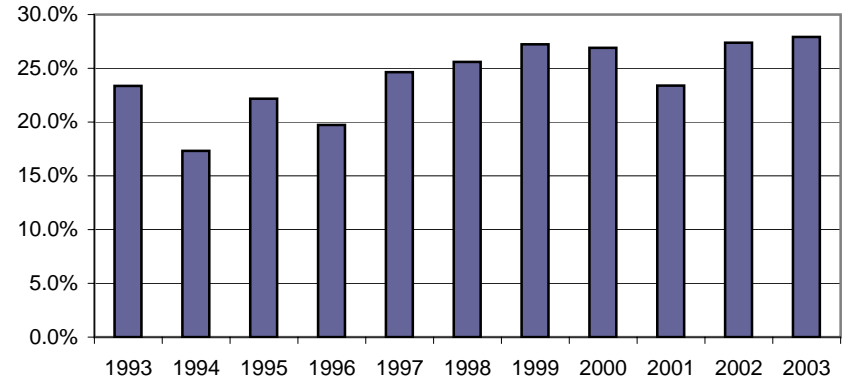
# All Occupants\* in Accidents - Safety Restraint Usage\*\* History

Year	Occupants in Accidents	Occupants Using Safety Belts	% Using Safety Belts	Deaths	Using Safety Belts	% of Use	Injuries	Using Safety Belts	% of Use	Unharmed	Using Safety Belts	% of Use
1993	172,493	123,409	71.5%	368	86	23.4%	27,875	16,940	60.8%	144,250	106,383	73.7%
1994	165,050	118,695	71.9%	387	67	17.3%	28,404	17,033	60.0%	136,259	101,595	74.6%
1995	172,905	126,913	73.4%	379	84	22.2%	28,460	17,755	62.4%	144,066	109,074	75.7%
1996	179,352	132,722	74.0%	441	87	19.7%	29,305	18,299	62.4%	149,606	114,336	76.4%
1997	185,016	137,511	74.3%	426	105	24.6%	29,878	18,964	63.5%	154,712	118,442	76.6%
1998	191,830	145,461	75.8%	422	108	25.6%	29,530	19,040	64.5%	161,878	126,313	78.0%
1999	189,573	147,565	77.8%	481	131	27.2%	28,897	19,235	66.6%	160,195	128,199	80.0%
2000	185,184	146,274	79.0%	409	110	26.9%	27,375	18,616	68.0%	157,400	127,548	81.0%
2001	184,931	149,085	80.6%	436	102	23.4%	27,158	18,872	69.5%	157,337	130,111	82.7%
2002	182,783	150,524	82.4%	438	120	27.4%	25,295	18,073	71.5%	157,050	132,331	84.3%
2003	172,672	144,596	83.7%	401	112	27.9%	23,086	16,983	73.6%	149,185	127,501	85.5%
<b>11-Year Total</b>	<b>1,981,789</b>	<b>1,522,755</b>	<b>76.8%</b>	<b>4,588</b>	<b>1,112</b>	<b>24.2%</b>	<b>305,263</b>	<b>199,810</b>	<b>65.5%</b>	<b>1,671,938</b>	<b>1,321,833</b>	<b>79.1%</b>

Percent of Occupant Safety Belt Use  
All ages



Percent of Occupant Safety Belt Use  
Deaths: All Ages



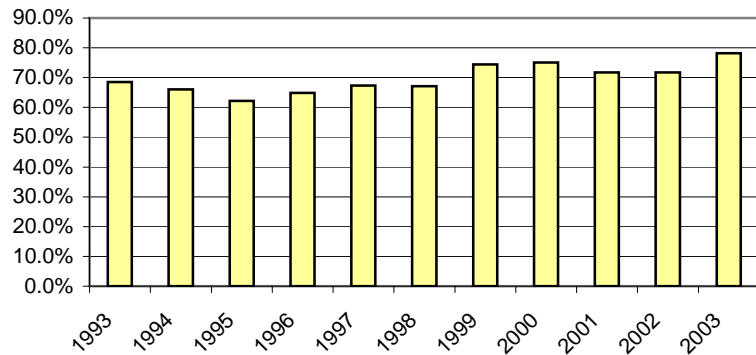
\* Excluding occupants in vehicle body types: motorcycles, mopeds, farm equipment, all-terrain-vehicle, buses, trains, other, and unknown

\*\* Excludes airbag only, helmet, eye protection, and unknown restraint use.

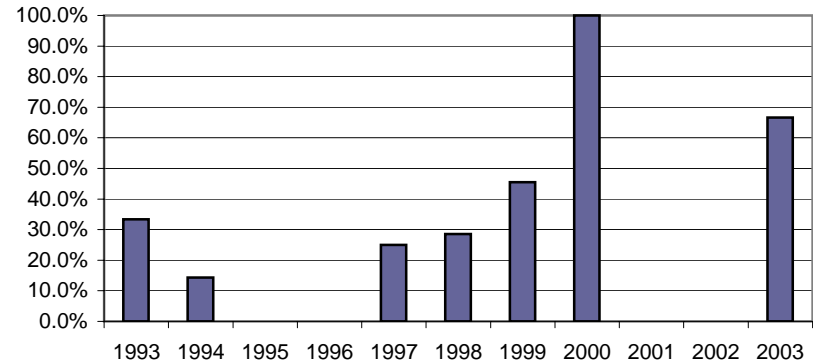
# Occupants\* Birth-3 Years Old in Accidents - Safety Belt Usage\*\* History

Child Safety Seat Required by Law	Occupants in Accidents	Occupants Using Child Safety Seat	% of Use	Deaths	Using Child Safety Seat	% of Use	Injuries	Using Child Safety Seat	% of Use	Unharmed	Using Child Safety Seat	% of Use
<b>1993</b>	6,008	4,116	68.5%	6	2	33.3%	510	288	56.5%	5,492	3,826	69.7%
<b>1994</b>	5,502	3,634	66.0%	7	1	14.3%	462	254	55.0%	5,033	3,379	67.1%
<b>1995</b>	5,632	3,500	62.1%	3	-	0.0%	516	251	48.6%	5,113	3,249	63.5%
<b>1996</b>	5,697	3,697	64.9%	1	-	0.0%	534	273	51.1%	5,162	3,424	66.3%
<b>1997</b>	5,606	3,776	67.4%	4	1	25.0%	522	284	54.4%	5,080	3,491	68.7%
<b>1998</b>	5,903	3,960	67.1%	7	2	28.6%	495	269	54.3%	5,401	3,689	68.3%
<b>1999</b>	5,879	4,375	74.4%	11	5	45.5%	509	303	59.5%	5,359	4,067	75.9%
<b>2000</b>	5,593	4,198	75.1%	2	2	100.0%	472	302	64.0%	5,119	3,894	76.1%
<b>2001</b>	5,513	3,958	71.8%	1	-	0.0%	455	255	56.0%	5,057	3,703	73.2%
<b>2002</b>	5,377	3,857	71.7%	6	-	0.0%	441	235	53.3%	4,930	3,622	73.5%
<b>2003</b>	4,992	3,901	78.1%	6	4	66.7%	420	286	68.1%	4,566	3,611	79.1%
<b>11-Year Total</b>	<b>61,702</b>	<b>42,972</b>	<b>69.6%</b>	<b>54</b>	<b>17</b>	<b>31.5%</b>	<b>5,336</b>	<b>3,000</b>	<b>56.2%</b>	<b>56,312</b>	<b>39,955</b>	<b>71.0%</b>

Percent of Occupant Safety Seat Use Birth-3 Years Old



Percent of Occupant Safety Seat Use Deaths: Birth-3 Years Old



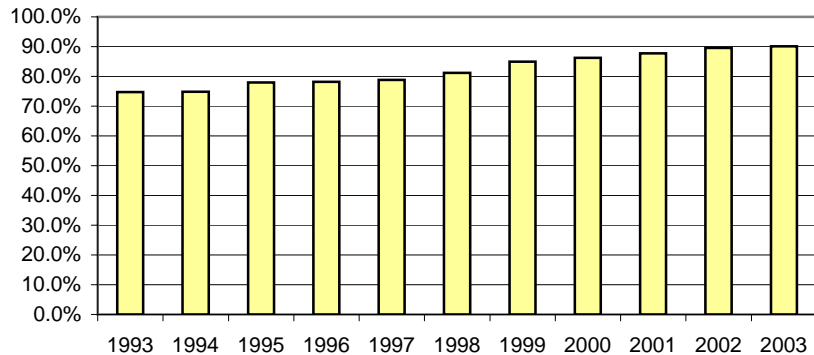
\* Excluding occupants in vehicle body types: motorcycles, mopeds, farm equipment, all-terrain-vehicle, buses, trains, other, and unknown

\*\* Restraint usage: infant, child, or booster seat, with or without airbag deployment.

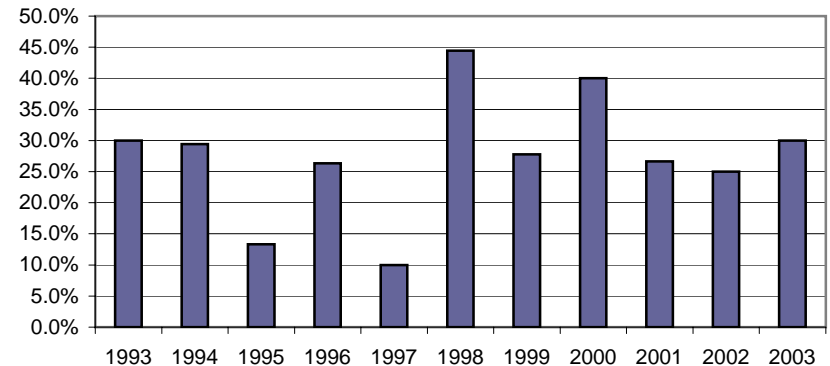
# Occupants\* 4-13 Years Old in Accidents - Safety Belt Usage\*\* History

Restraint Required by Law for Children Age 4-13	Occupants in Accidents	Occupants Using Safety Belts	% of Use	Deaths	Using Safety Belts	% of Use	Injuries	Using Safety Belts	% of Use	Unharmed	Using Safety Belts	% of Use
<b>1993</b>	13,302	9,942	74.7%	10	3	30.0%	1,745	985	56.4%	11,547	8,954	77.5%
<b>1994</b>	12,799	9,575	74.8%	17	5	29.4%	1,856	1,015	54.7%	10,926	8,555	78.3%
<b>1995</b>	13,198	10,283	77.9%	15	2	13.3%	1,829	1,094	59.8%	11,354	9,187	80.9%
<b>1996</b>	13,439	10,507	78.2%	19	5	26.3%	1,915	1,120	58.5%	11,505	9,382	81.5%
<b>1997</b>	13,706	10,800	78.8%	10	1	10.0%	1,912	1,154	60.4%	11,784	9,645	81.8%
<b>1998</b>	14,258	11,574	81.2%	18	8	44.4%	1,909	1,216	63.7%	12,331	10,350	83.9%
<b>1999</b>	13,789	11,710	84.9%	18	5	27.8%	1,776	1,195	67.3%	11,995	10,510	87.6%
<b>2000</b>	12,780	11,017	86.2%	15	6	40.0%	1,621	1,140	70.3%	11,144	9,871	88.6%
<b>2001</b>	12,813	11,241	87.7%	15	4	26.7%	1,653	1,188	71.9%	11,145	10,049	90.2%
<b>2002</b>	12,415	11,117	89.5%	12	3	25.0%	1,438	1,079	75.0%	10,965	10,035	91.5%
<b>2003</b>	11,731	10,575	90.1%	10	3	30.0%	1,270	990	78.0%	10,451	9,582	91.7%
<b>11-Year Total</b>	<b>144,230</b>	<b>118,341</b>	<b>82.1%</b>	<b>159</b>	<b>45</b>	<b>28.3%</b>	<b>18,924</b>	<b>12,176</b>	<b>64.3%</b>	<b>125,147</b>	<b>106,120</b>	<b>84.8%</b>

Percent of Occupant Safety Equipment Use  
4-13 Years Old



Percent of Occupant Safety Equipment Use  
Deaths: 4-13 Years Old



\* Excluding occupants in vehicle body types: motorcycles, mopeds, farm equipment, all-terrain-vehicle, buses, trains, other, and unknown

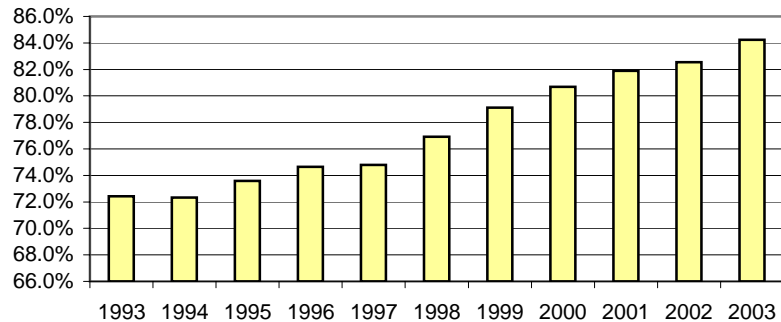
\*\* Excludes airbag deployment only, helmet, eye protection, and unknown restraint use.

# All Occupants\* in Accidents - Safety Belt Usage\*\* History

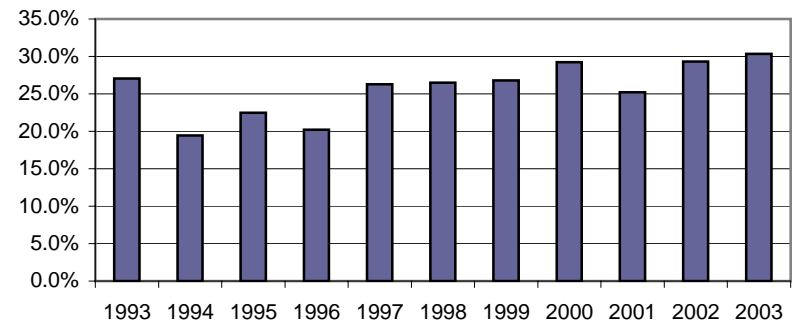
## --Where the Speed Limit is Greater Than 45 mph--

	Occupants in Accidents	Occupants Using Safety Belts	% of Use	Deaths	Using Safety Belts	% of Use	Injuries	Using Safety Belts	% of Use	Unharmed	Using Safety Belts	% of Use
<b>1993</b>	44,210	32,024	72.4%	270	73	27.0%	8,763	4,981	56.8%	35,177	26,970	76.7%
<b>1994</b>	43,482	31,452	72.3%	293	57	19.5%	9,203	5,179	56.3%	33,986	26,216	77.1%
<b>1995</b>	46,801	34,441	73.6%	267	60	22.5%	9,343	5,440	58.2%	37,191	28,941	77.8%
<b>1996</b>	52,620	39,275	74.6%	356	72	20.2%	10,661	6,215	58.3%	41,603	32,988	79.3%
<b>1997</b>	51,826	38,768	74.8%	312	82	26.3%	10,290	6,054	58.8%	41,224	32,632	79.2%
<b>1998</b>	55,148	42,417	76.9%	321	85	26.5%	10,306	6,154	59.7%	44,521	36,178	81.3%
<b>1999</b>	54,387	43,029	79.1%	362	97	26.8%	10,060	6,366	63.3%	43,965	36,566	83.2%
<b>2000</b>	51,467	41,531	80.7%	318	93	29.2%	9,298	6,038	64.9%	41,851	35,400	84.6%
<b>2001</b>	54,255	44,436	81.9%	337	85	25.2%	9,681	6,353	65.6%	44,237	37,998	85.9%
<b>2002</b>	53,665	44,304	82.6%	348	102	29.3%	9,602	6,358	66.2%	43,715	37,844	86.6%
<b>2003</b>	52,060	43,853	84.2%	310	94	30.3%	8,927	6,158	69.0%	42,823	37,601	87.8%
<b>11-Year Total</b>	<b>559,921</b>	<b>435,530</b>	<b>77.8%</b>	<b>3,494</b>	<b>900</b>	<b>25.8%</b>	<b>106,134</b>	<b>65,296</b>	<b>61.5%</b>	<b>450,293</b>	<b>369,334</b>	<b>82.0%</b>

Percent of Occupant Safety Belt Usage  
Where the Speed Limit > 45



Deaths - Percent of Safety Belt Usage  
Deaths: Where the Speed Limit > 45



\* Excluding occupants in vehicle body types: motorcycles, mopeds, farm equipment, all-terrain-vehicle, buses, trains, other, and unknown. In addition, occupants in accidents where the "on road" speed limit is unknown are excluded.

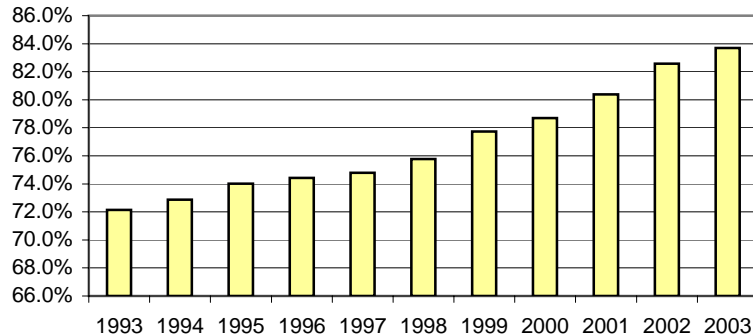
\*\* Excludes airbag only, helmet, eye protection, and unknown restraint use.

# All Occupants\* in Accidents - Safety Belt Usage\*\* History

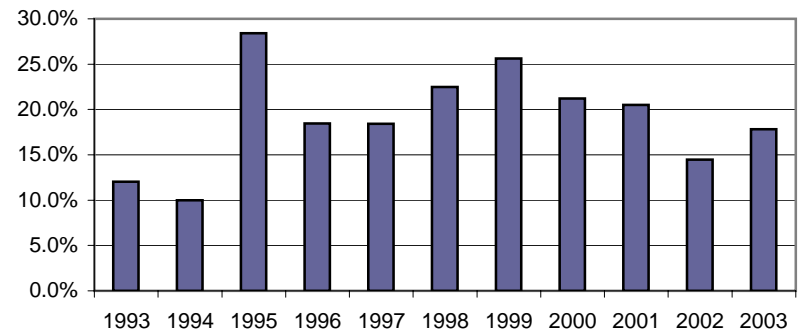
## --Where the Speed Limit was Less Than or Equal to 45 mph--

	Occupants in Accidents	Occupants Using Safety Belts	% of Use	Deaths	Using Safety Belts	% of Use	Injuries	Using Safety Belts	% of Use	Unharmed	Using Safety Belts	% of Use
<b>1993</b>	117,994	85,120	72.1%	83	10	12.0%	17,532	11,198	63.9%	100,379	73,912	73.6%
<b>1994</b>	110,581	80,580	72.9%	70	7	10.0%	17,415	11,047	63.4%	93,096	69,526	74.7%
<b>1995</b>	117,622	87,057	74.0%	81	23	28.4%	17,745	11,627	65.5%	99,796	75,407	75.6%
<b>1996</b>	118,304	88,038	74.4%	65	12	18.5%	17,355	11,429	65.9%	100,884	76,597	75.9%
<b>1997</b>	121,064	90,550	74.8%	76	14	18.4%	17,761	11,890	66.9%	103,227	78,646	76.2%
<b>1998</b>	127,843	96,863	75.8%	80	18	22.5%	17,837	12,081	67.7%	109,926	84,764	77.1%
<b>1999</b>	127,243	98,919	77.7%	82	21	25.6%	17,678	12,165	68.8%	109,483	86,733	79.2%
<b>2000</b>	123,290	97,020	78.7%	66	14	21.2%	16,580	11,628	70.1%	106,644	85,378	80.1%
<b>2001</b>	124,820	100,329	80.4%	78	16	20.5%	16,677	12,002	72.0%	108,065	88,311	81.7%
<b>2002</b>	123,328	101,827	82.6%	76	11	14.5%	14,967	11,226	75.0%	108,285	90,590	83.7%
<b>2003</b>	114,262	95,643	83.7%	73	13	17.8%	13,313	10,191	76.5%	100,876	85,439	84.7%
<b>11-Year Total</b>	<b>1,326,351</b>	<b>1,021,946</b>	<b>77.0%</b>	<b>830</b>	<b>159</b>	<b>19.2%</b>	<b>184,860</b>	<b>126,484</b>	<b>68.4%</b>	<b>1,140,661</b>	<b>895,303</b>	<b>78.5%</b>

Percent of Occupant Safety Belt Usage  
Where the Speed Limit <= 45



Percent of Occupant Safety Belt Usage  
Deaths: Where the Speed Limit <= 45



\* Excluding occupants in vehicle body types: motorcycles, mopeds, farm equipment, all-terrain-vehicle, buses, trains, other, and unknown. In addition, occupants in accidents where the "on road" speed limit is unknown are excluded.

\*\* Excludes airbag only, helmet, eye protection, and unknown restraint use.