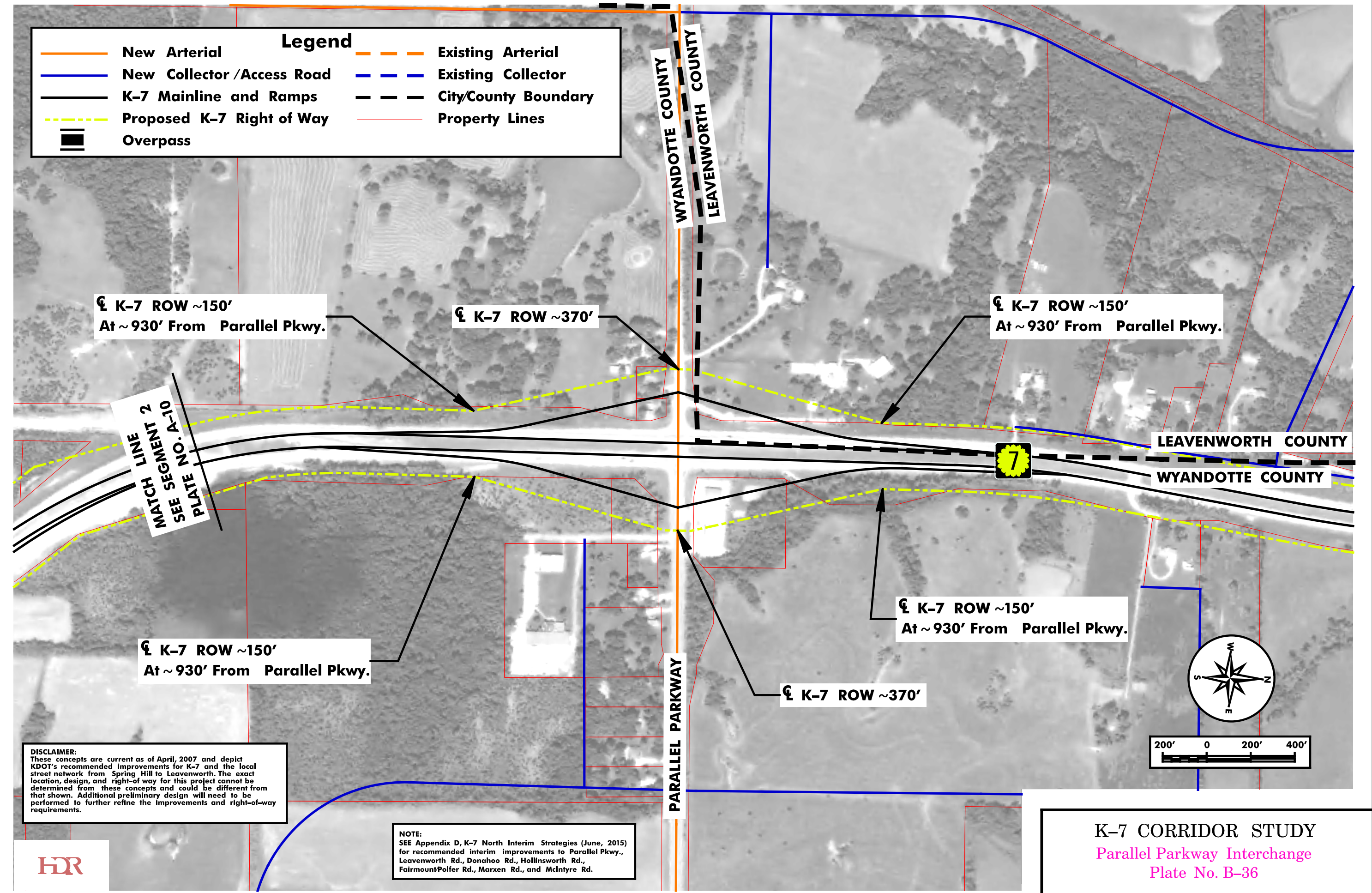


Legend			
	New Arterial		Existing Arterial
	New Collector / Access Road		Existing Collector
	K-7 Mainline and Ramps		City/County Boundary
	Proposed K-7 Right of Way		Property Lines
	Overpass		



☪ K-7 ROW ~150'
At ~930' From Parallel Pkwy.

☪ K-7 ROW ~370'

☪ K-7 ROW ~150'
At ~930' From Parallel Pkwy.

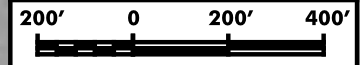
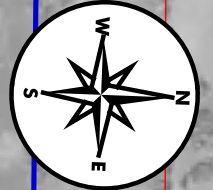
MATCH LINE 2
SEE SEGMENT 1
PIATE
NO. A-10

LEAVENWORTH COUNTY
WYANDOTTE COUNTY

☪ K-7 ROW ~150'
At ~930' From Parallel Pkwy.

☪ K-7 ROW ~150'
At ~930' From Parallel Pkwy.

☪ K-7 ROW ~370'



DISCLAIMER:
These concepts are current as of April, 2007 and depict KDOT's recommended improvements for K-7 and the local street network from Spring Hill to Leavenworth. The exact location, design, and right-of-way for this project cannot be determined from these concepts and could be different from that shown. Additional preliminary design will need to be performed to further refine the improvements and right-of-way requirements.

NOTE:
SEE Appendix D, K-7 North Interim Strategies (June, 2015) for recommended interim improvements to Parallel Pkwy., Leavenworth Rd., Donahoo Rd., Hollinsworth Rd., Fairmount/Polfer Rd., Marxen Rd., and McIntyre Rd.



K-7 CORRIDOR STUDY
Parallel Parkway Interchange
Plate No. B-36

Date of Aerials: 2008 June 2015