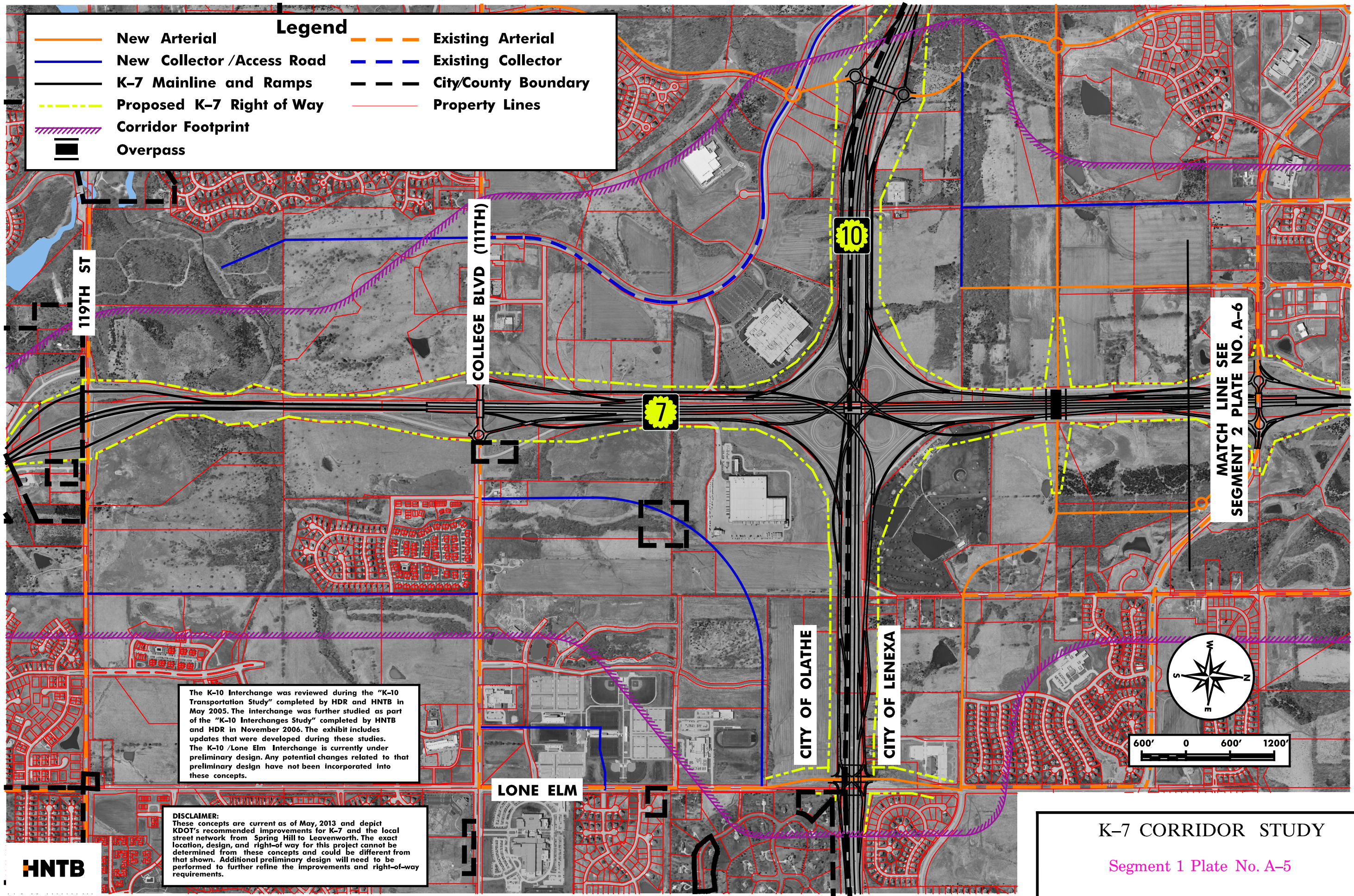


Legend			
	New Arterial		Existing Arterial
	New Collector / Access Road		Existing Collector
	K-7 Mainline and Ramps		City/County Boundary
	Proposed K-7 Right of Way		Property Lines
	Corridor Footprint		
	Overpass		



MATCH LINE SEE SEGMENT 2 PLATE NO. A-6

The K-10 Interchange was reviewed during the "K-10 Transportation Study" completed by HDR and HNTB in May 2005. The interchange was further studied as part of the "K-10 Interchanges Study" completed by HNTB and HDR in November 2006. The exhibit includes updates that were developed during these studies. The K-10 /Lone Elm Interchange is currently under preliminary design. Any potential changes related to that preliminary design have not been incorporated into these concepts.

**DISCLAIMER:**  
 These concepts are current as of May 2013 and depict KDOT's recommended improvements for K-7 and the local street network from Spring Hill to Leavenworth. The exact location, design, and right-of way for this project cannot be determined from these concepts and could be different from that shown. Additional preliminary design will need to be performed to further refine the improvements and right-of-way requirements.

**HNTB**

**K-7 CORRIDOR STUDY**

Segment 1 Plate No. A-5

Date of Aerials: 2010 June 2015