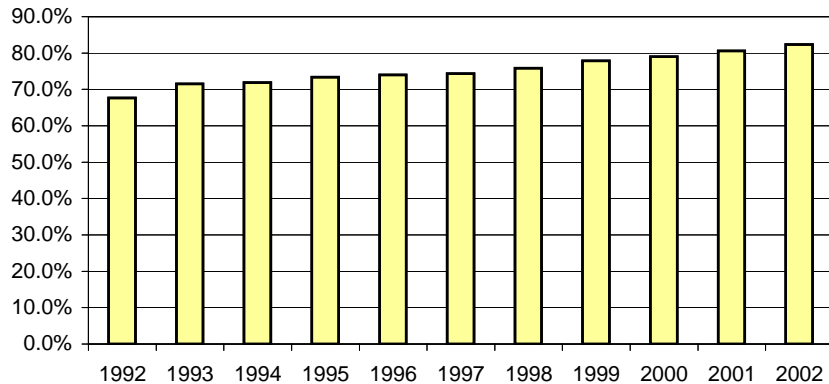


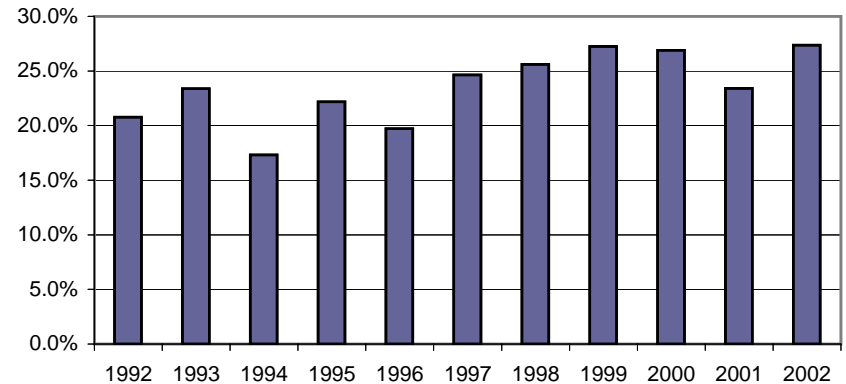
All Occupants* in Accidents - Safety Belt Usage** History

| Year | Occupants in Accidents | Occupants Using Safety Belts | % Using Safety Belts | Deaths | Using Safety Belts | % of Use | Injuries | Using Safety Belts | % of Use | Unharmed | Using Safety Belts | % of Use |
|----------------------|------------------------|------------------------------|----------------------|--------------|--------------------|----------|----------------|--------------------|----------|------------------|--------------------|----------|
| 1992 | 160,197 | 108,360 | 67.6% | 332 | 69 | 20.8% | 27,687 | 15,742 | 56.9% | 132,178 | 92,549 | 70.0% |
| 1993 | 172,493 | 123,409 | 71.5% | 368 | 86 | 23.4% | 27,875 | 16,940 | 60.8% | 144,250 | 106,383 | 73.7% |
| 1994 | 165,050 | 118,695 | 71.9% | 387 | 67 | 17.3% | 28,404 | 17,033 | 60.0% | 136,259 | 101,595 | 74.6% |
| 1995 | 172,905 | 126,913 | 73.4% | 379 | 84 | 22.2% | 28,460 | 17,755 | 62.4% | 144,066 | 109,074 | 75.7% |
| 1996 | 179,352 | 132,722 | 74.0% | 441 | 87 | 19.7% | 29,305 | 18,299 | 62.4% | 149,606 | 114,336 | 76.4% |
| 1997 | 185,016 | 137,511 | 74.3% | 426 | 105 | 24.6% | 29,878 | 18,964 | 63.5% | 154,712 | 118,442 | 76.6% |
| 1998 | 191,830 | 145,461 | 75.8% | 422 | 108 | 25.6% | 29,530 | 19,040 | 64.5% | 161,878 | 126,313 | 78.0% |
| 1999 | 189,573 | 147,565 | 77.8% | 481 | 131 | 27.2% | 28,897 | 19,235 | 66.6% | 160,195 | 128,199 | 80.0% |
| 2000 | 185,184 | 146,274 | 79.0% | 409 | 110 | 26.9% | 27,375 | 18,616 | 68.0% | 157,400 | 127,548 | 81.0% |
| 2001 | 184,930 | 149,084 | 80.6% | 436 | 102 | 23.4% | 27,158 | 18,872 | 69.5% | 157,336 | 130,110 | 82.7% |
| 2002 | 182,707 | 150,462 | 82.4% | 442 | 121 | 27.4% | 25,283 | 18,068 | 71.5% | 156,982 | 132,273 | 84.3% |
| 11-Year Total | 1,969,237 | 1,486,456 | | 4,523 | 1,070 | | 309,852 | 198,564 | | 1,654,862 | 1,286,822 | |

Percent of Occupant Safety Belt Use
All ages



Percent of Occupant Safety Belt Use
Deaths: All Ages



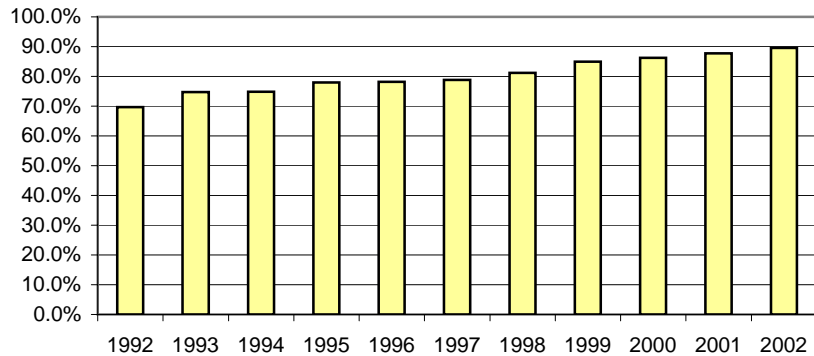
* Excluding occupants in vehicle body types: motorcycles, mopeds, farm equipment, all-terrain-vehicle, buses, trains, other, and unknown

** Safety belt usage = Shoulder belt only, Lap belt only, Both, or Child safety seat used properly

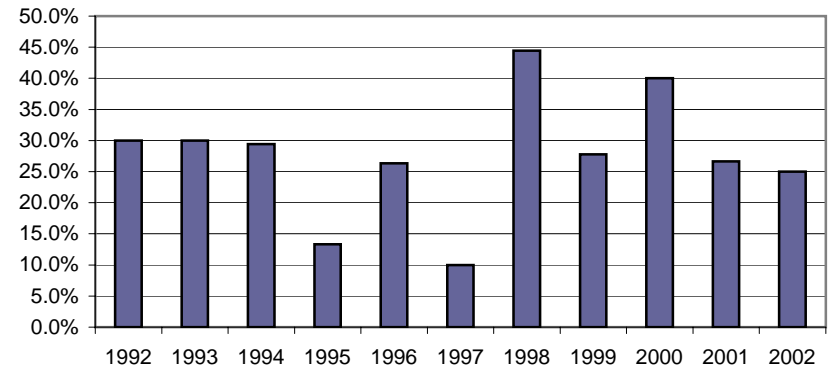
Occupants* 4-13 Years Old in Accidents - Safety Belt Usage** History

| Restraint Required by Law for Children Age 4-13 | Occupants in Accidents | Occupants Using Safety Belts | % of Use | Deaths | Using Safety Belts | % of Use | Injuries | Using Safety Belts | % of Use | Unharmed | Using Safety Belts | % of Use |
|---|------------------------|------------------------------|----------|------------|--------------------|----------|---------------|--------------------|----------|----------------|--------------------|----------|
| 1992 | 12,237 | 8,533 | 69.7% | 10 | 3 | 30.0% | 1,822 | 897 | 49.2% | 10,405 | 7,633 | 73.4% |
| 1993 | 13,302 | 9,942 | 74.7% | 10 | 3 | 30.0% | 1,745 | 985 | 56.4% | 11,547 | 8,954 | 77.5% |
| 1994 | 12,799 | 9,575 | 74.8% | 17 | 5 | 29.4% | 1,856 | 1,015 | 54.7% | 10,926 | 8,555 | 78.3% |
| 1995 | 13,198 | 10,283 | 77.9% | 15 | 2 | 13.3% | 1,829 | 1,094 | 59.8% | 11,354 | 9,187 | 80.9% |
| 1996 | 13,439 | 10,507 | 78.2% | 19 | 5 | 26.3% | 1,915 | 1,120 | 58.5% | 11,505 | 9,382 | 81.5% |
| 1997 | 13,706 | 10,800 | 78.8% | 10 | 1 | 10.0% | 1,912 | 1,154 | 60.4% | 11,784 | 9,645 | 81.8% |
| 1998 | 14,258 | 11,574 | 81.2% | 18 | 8 | 44.4% | 1,909 | 1,216 | 63.7% | 12,331 | 10,350 | 83.9% |
| 1999 | 13,789 | 11,710 | 84.9% | 18 | 5 | 27.8% | 1,776 | 1,195 | 67.3% | 11,995 | 10,510 | 87.6% |
| 2000 | 12,780 | 11,017 | 86.2% | 15 | 6 | 40.0% | 1,621 | 1,140 | 70.3% | 11,144 | 9,871 | 88.6% |
| 2001 | 12,813 | 11,241 | 87.7% | 15 | 4 | 26.7% | 1,653 | 1,188 | 71.9% | 11,145 | 10,049 | 90.2% |
| 2002 | 12,409 | 11,111 | 89.5% | 12 | 3 | 25.0% | 1,437 | 1,078 | 75.0% | 10,960 | 10,030 | 91.5% |
| 11-Year Total | 144,730 | 116,293 | | 159 | 45 | | 19,475 | 12,082 | | 125,096 | 104,166 | |

Percent of Occupant Safety Equipment Use
4-13 Years Old



Percent of Occupant Safety Equipment Use
Deaths: 4-13 Years Old



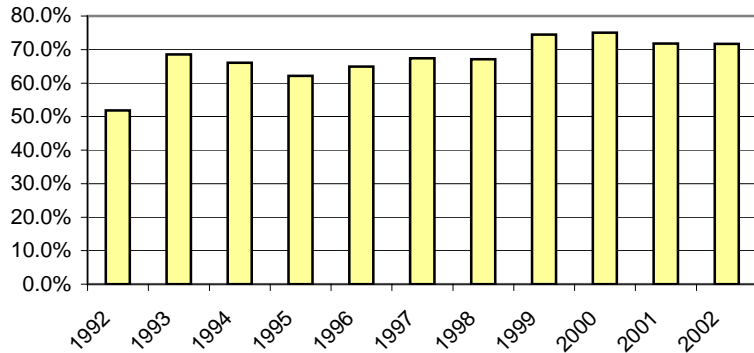
* Excluding occupants in vehicle body types: motorcycles, mopeds, farm equipment, all-terrain-vehicle, buses, trains, other, and unknown

** Safety belt usage = Shoulder belt only, Lap belt only, Both, or Child safety seat used properly

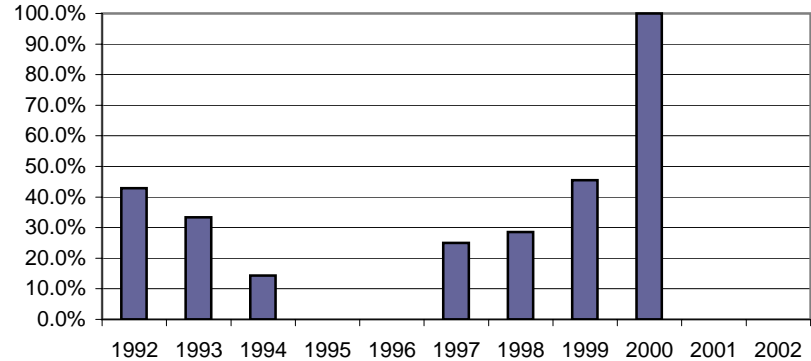
Occupants* Birth-3 Years Old in Accidents - Safety Belt Usage** History

| Child Safety Seat Required by Law | Occupants in Accidents | Occupants Using Child Safety Seat | % of Use | Deaths | Using Child Safety Seat | % of Use | Injuries | Using Child Safety Seat | % of Use | Unharmed | Using Child Safety Seat | % of Use |
|-----------------------------------|------------------------|-----------------------------------|----------|-----------|-------------------------|----------|--------------|-------------------------|----------|---------------|-------------------------|----------|
| 1992 | 5,475 | 2,839 | 51.9% | 7 | 3 | 42.9% | 530 | 185 | 34.9% | 4,938 | 2,651 | 53.7% |
| 1993 | 6,008 | 4,116 | 68.5% | 6 | 2 | 33.3% | 510 | 288 | 56.5% | 5,492 | 3,826 | 69.7% |
| 1994 | 5,502 | 3,634 | 66.0% | 7 | 1 | 14.3% | 462 | 254 | 55.0% | 5,033 | 3,379 | 67.1% |
| 1995 | 5,632 | 3,500 | 62.1% | 3 | - | 0.0% | 516 | 251 | 48.6% | 5,113 | 3,249 | 63.5% |
| 1996 | 5,697 | 3,697 | 64.9% | 1 | - | 0.0% | 534 | 273 | 51.1% | 5,162 | 3,424 | 66.3% |
| 1997 | 5,606 | 3,776 | 67.4% | 4 | 1 | 25.0% | 522 | 284 | 54.4% | 5,080 | 3,491 | 68.7% |
| 1998 | 5,903 | 3,960 | 67.1% | 7 | 2 | 28.6% | 495 | 269 | 54.3% | 5,401 | 3,689 | 68.3% |
| 1999 | 5,879 | 4,375 | 74.4% | 11 | 5 | 45.5% | 509 | 303 | 59.5% | 5,359 | 4,067 | 75.9% |
| 2000 | 5,593 | 4,198 | 75.1% | 2 | 2 | 100.0% | 472 | 302 | 64.0% | 5,119 | 3,894 | 76.1% |
| 2001 | 5,513 | 3,958 | 71.8% | 1 | - | 0.0% | 455 | 255 | 56.0% | 5,057 | 3,703 | 73.2% |
| 2002 | 5,375 | 3,856 | 71.7% | 6 | - | 0.0% | 440 | 235 | 53.4% | 4,929 | 3,621 | 73.5% |
| 11-Year Total | 62,183 | 41,909 | | 55 | 16 | | 5,445 | 2,899 | | 56,683 | 38,994 | |

Percent of Occupant Safety Seat Use Birth-3 Years Old



Percent of Occupant Safety Seat Use Deaths: Birth-3 Years Old



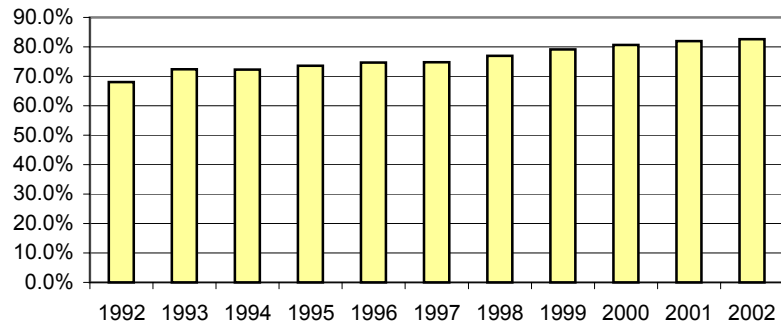
* Excluding occupants in vehicle body types: motorcycles, mopeds, farm equipment, all-terrain-vehicle, buses, trains, other, and unknown

** Safety belt usage = Child safety seat used properly

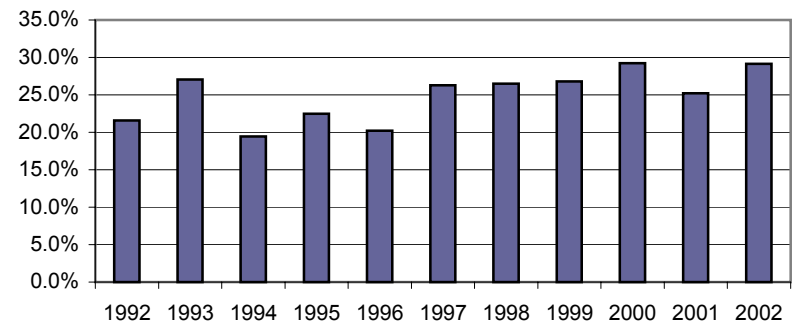
All Occupants* in Accidents - Safety Belt Usage** History --Where the Speed Limit is Greater Than 45 mph--

| | Occupants in Accidents | Occupants Using Safety Belts | % of Use | Deaths | Using Safety Belts | % of Use | Injuries | Using Safety Belts | % of Use | Unharmed | Using Safety Belts | % of Use |
|----------------------|------------------------|------------------------------|----------|--------------|--------------------|----------|----------------|--------------------|----------|----------------|--------------------|----------|
| 1992 | 37,798 | 25,738 | 68.1% | 255 | 55 | 21.6% | 8,250 | 4,354 | 52.8% | 29,293 | 21,329 | 72.8% |
| 1993 | 44,210 | 32,024 | 72.4% | 270 | 73 | 27.0% | 8,763 | 4,981 | 56.8% | 35,177 | 26,970 | 76.7% |
| 1994 | 43,482 | 31,452 | 72.3% | 293 | 57 | 19.5% | 9,203 | 5,179 | 56.3% | 33,986 | 26,216 | 77.1% |
| 1995 | 46,801 | 34,441 | 73.6% | 267 | 60 | 22.5% | 9,343 | 5,440 | 58.2% | 37,191 | 28,941 | 77.8% |
| 1996 | 52,620 | 39,275 | 74.6% | 356 | 72 | 20.2% | 10,661 | 6,215 | 58.3% | 41,603 | 32,988 | 79.3% |
| 1997 | 51,826 | 38,768 | 74.8% | 312 | 82 | 26.3% | 10,290 | 6,054 | 58.8% | 41,224 | 32,632 | 79.2% |
| 1998 | 55,148 | 42,417 | 76.9% | 321 | 85 | 26.5% | 10,306 | 6,154 | 59.7% | 44,521 | 36,178 | 81.3% |
| 1999 | 54,387 | 43,029 | 79.1% | 362 | 97 | 26.8% | 10,060 | 6,366 | 63.3% | 43,965 | 36,566 | 83.2% |
| 2000 | 51,476 | 41,540 | 80.7% | 318 | 93 | 29.2% | 9,299 | 6,039 | 64.9% | 41,859 | 35,408 | 84.6% |
| 2001 | 54,271 | 44,450 | 81.9% | 337 | 85 | 25.2% | 9,687 | 6,359 | 65.6% | 44,247 | 38,006 | 85.9% |
| 2002 | 53,617 | 44,264 | 82.6% | 350 | 102 | 29.1% | 9,594 | 6,355 | 66.2% | 43,673 | 37,807 | 86.6% |
| 11-Year Total | 545,636 | 417,398 | | 3,441 | 861 | | 105,456 | 63,496 | | 436,739 | 353,041 | |

**Percent of Occupant Safety Belt Usage
Where the Speed Limit > 45**



**Deaths - Percent of Safety Belt Usage
Deaths: Where the Speed Limit > 45**



* Excluding occupants in vehicle body types: motorcycles, mopeds, farm equipment, all-terrain-vehicle, buses, trains, other, and unknown. In addition, occupants in accidents where the "on road" speed limit is unknown are excluded.

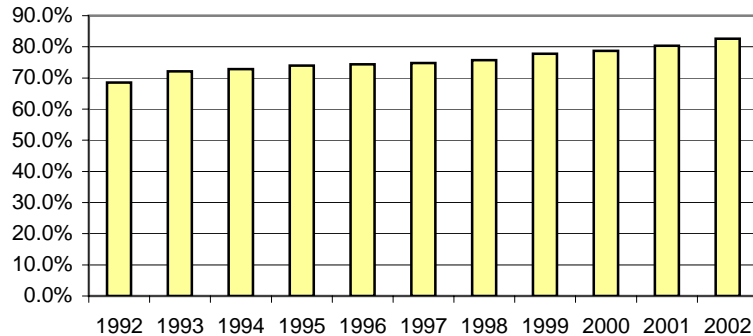
** Safety belt usage = Shoulder belt only, Lap belt only, Both, or Child safety seat

All Occupants* in Accidents - Safety Belt Usage** History

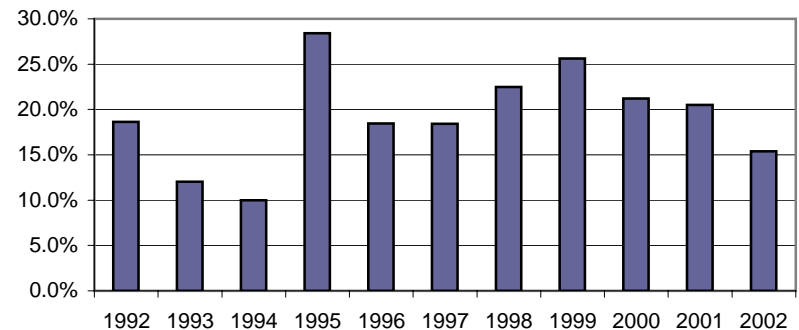
--Where the Speed Limit is Less Than 45 mph--

| | Occupants in Accidents | Occupants Using Safety Belts | % of Use | Deaths | Using Safety Belts | % of Use | Injuries | Using Safety Belts | % of Use | Unharmed | Using Safety Belts | % of Use |
|----------------------|------------------------|------------------------------|----------|------------|--------------------|----------|----------------|--------------------|----------|------------------|--------------------|----------|
| 1992 | 113,008 | 77,422 | 68.5% | 59 | 11 | 18.6% | 17,932 | 10,698 | 59.7% | 95,017 | 66,713 | 70.2% |
| 1993 | 117,994 | 85,120 | 72.1% | 83 | 10 | 12.0% | 17,532 | 11,198 | 63.9% | 100,379 | 73,912 | 73.6% |
| 1994 | 110,581 | 80,580 | 72.9% | 70 | 7 | 10.0% | 17,415 | 11,047 | 63.4% | 93,096 | 69,526 | 74.7% |
| 1995 | 117,622 | 87,057 | 74.0% | 81 | 23 | 28.4% | 17,745 | 11,627 | 65.5% | 99,796 | 75,407 | 75.6% |
| 1996 | 118,304 | 88,038 | 74.4% | 65 | 12 | 18.5% | 17,355 | 11,429 | 65.9% | 100,884 | 76,597 | 75.9% |
| 1997 | 121,064 | 90,550 | 74.8% | 76 | 14 | 18.4% | 17,761 | 11,890 | 66.9% | 103,227 | 78,646 | 76.2% |
| 1998 | 127,843 | 96,863 | 75.8% | 80 | 18 | 22.5% | 17,837 | 12,081 | 67.7% | 109,926 | 84,764 | 77.1% |
| 1999 | 127,243 | 98,919 | 77.7% | 82 | 21 | 25.6% | 17,678 | 12,165 | 68.8% | 109,483 | 86,733 | 79.2% |
| 2000 | 123,290 | 97,020 | 78.7% | 66 | 14 | 21.2% | 16,580 | 11,628 | 70.1% | 106,644 | 85,378 | 80.1% |
| 2001 | 124,820 | 100,329 | 80.4% | 78 | 16 | 20.5% | 16,677 | 12,002 | 72.0% | 108,065 | 88,311 | 81.7% |
| 2002 | 123,296 | 101,803 | 82.6% | 78 | 12 | 15.4% | 14,962 | 11,224 | 75.0% | 108,256 | 90,567 | 83.7% |
| 11-Year Total | 1,325,065 | 1,003,701 | | 818 | 158 | | 189,474 | 126,989 | | 1,134,773 | 876,554 | |

Percent of Occupant Safety Belt Usage
Where the Speed Limit <= 45



Percent of Occupant Safety Belt Usage
Deaths: Where the Speed Limit <= 45



* Excluding occupants in vehicle body types: motorcycles, mopeds, farm equipment, all-terrain-vehicle, buses, trains, other, and unknown. In addition, occupants in accidents where the "on road" speed limit is unknown are excluded.

** Safety belt usage = Shoulder belt only, Lap belt only, Both, or Child safety seat