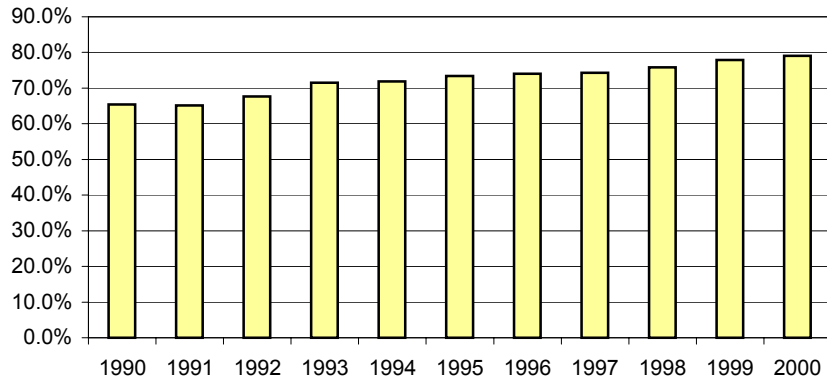


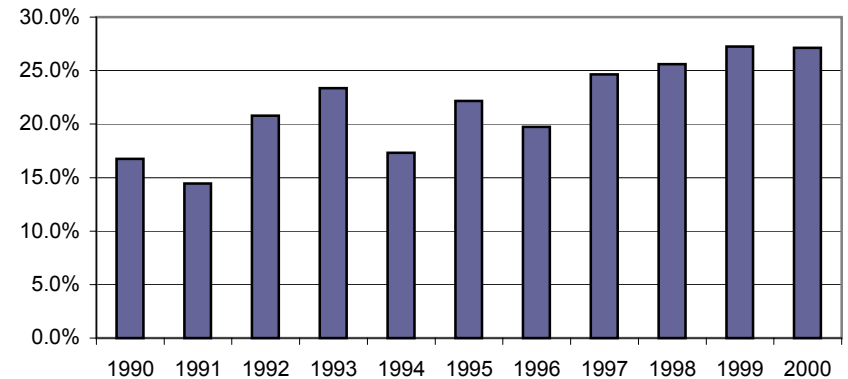
# All Occupants\* in Accidents - Safety Belt Usage\*\* History

	Occupants in Accidents	Occupants Using Safety Belts	% of Use	Deaths	Using Safety Belts	% of Use	Injuries	Using Safety Belts	% of Use	Unharmed	Using Safety Belts	% of Use
<b>1990</b>	156,354	102,216	65.4%	364	61	16.8%	27,649	15,396	55.7%	128,341	86,759	67.6%
<b>1991</b>	152,376	99,208	65.1%	332	48	14.5%	26,096	14,210	54.5%	125,948	84,950	67.4%
<b>1992</b>	160,197	108,360	67.6%	332	69	20.8%	27,687	15,742	56.9%	132,178	92,549	70.0%
<b>1993</b>	172,493	123,409	71.5%	368	86	23.4%	27,875	16,940	60.8%	144,250	106,383	73.7%
<b>1994</b>	165,050	118,695	71.9%	387	67	17.3%	28,404	17,033	60.0%	136,259	101,595	74.6%
<b>1995</b>	172,905	126,913	73.4%	379	84	22.2%	28,460	17,755	62.4%	144,066	109,074	75.7%
<b>1996</b>	179,352	132,722	74.0%	441	87	19.7%	29,305	18,299	62.4%	149,606	114,336	76.4%
<b>1997</b>	185,018	137,511	74.3%	426	105	24.6%	29,880	18,964	63.5%	154,712	118,442	76.6%
<b>1998</b>	191,830	145,461	75.8%	422	108	25.6%	29,530	19,040	64.5%	161,878	126,313	78.0%
<b>1999</b>	189,354	147,481	77.9%	481	131	27.2%	28,882	19,233	66.6%	159,991	128,117	80.1%
<b>2000</b>	184,887	146,108	79.0%	409	111	27.1%	27,314	18,594	68.1%	157,164	127,403	81.1%
<b>11-Year Total</b>	<b>1,909,816</b>	<b>1,388,084</b>		<b>4,341</b>	<b>957</b>		<b>311,082</b>	<b>191,206</b>		<b>1,594,393</b>	<b>1,195,921</b>	

Percent of Occupant Safety Belt Use  
All ages



Percent of Occupant Safety Belt Use  
Deaths: All Ages



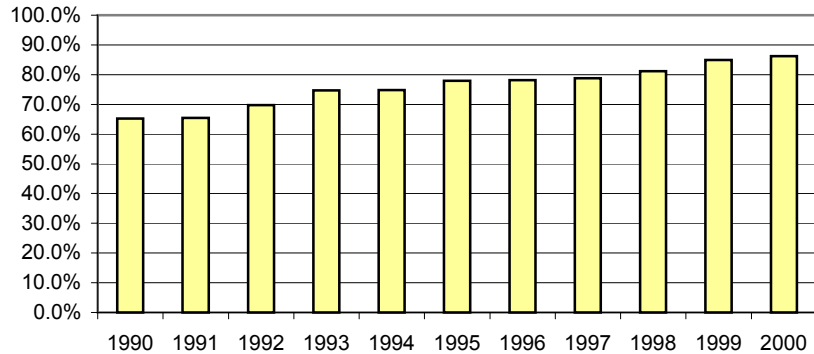
\* Excluding occupants in vehicle body types: motorcycles, mopeds, farm equipment, all-terrain vehicle, buses, trains, other, and unknown.

\*\* Safety belt usage = Shoulder belt only, Lap belt only, Both, or Child safety seat used properly

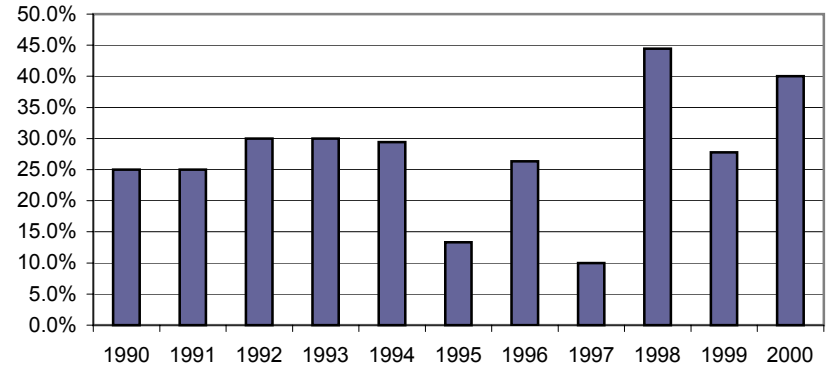
# Occupants\* 4-13 Years old in Accidents - Safety Belt Usage\*\* History

Restraint Required by Law for Children Age 4-13	Occupants in Accidents	Occupants Using Safety Belts	% of Use	Deaths	Using Safety Belts	% of Use	Injuries	Using Safety Belts	% of Use	Unharmed	Using Safety Belts	% of Use
<b>1990</b>	11,471	7,477	65.2%	12	3	25.0%	1,787	860	48.1%	9,672	6,614	68.4%
<b>1991</b>	11,306	7,401	65.5%	8	2	25.0%	1,701	800	47.0%	9,597	6,599	68.8%
<b>1992</b>	12,237	8,533	69.7%	10	3	30.0%	1,822	897	49.2%	10,405	7,633	73.4%
<b>1993</b>	13,302	9,942	74.7%	10	3	30.0%	1,745	985	56.4%	11,547	8,954	77.5%
<b>1994</b>	12,799	9,575	74.8%	17	5	29.4%	1,856	1,015	54.7%	10,926	8,555	78.3%
<b>1995</b>	13,198	10,283	77.9%	15	2	13.3%	1,829	1,094	59.8%	11,354	9,187	80.9%
<b>1996</b>	13,439	10,507	78.2%	19	5	26.3%	1,915	1,120	58.5%	11,505	9,382	81.5%
<b>1997</b>	13,706	10,800	78.8%	10	1	10.0%	1,912	1,154	60.4%	11,784	9,645	81.8%
<b>1998</b>	14,258	11,574	81.2%	18	8	44.4%	1,909	1,216	63.7%	12,331	10,350	83.9%
<b>1999</b>	13,776	11,702	84.9%	18	5	27.8%	1,775	1,195	67.3%	11,983	10,502	87.6%
<b>2000</b>	12,762	11,006	86.2%	15	6	40.0%	1,617	1,140	70.5%	11,130	9,860	88.6%
<b>11-Year Total</b>	<b>142,254</b>	<b>108,800</b>		<b>152</b>	<b>43</b>		<b>19,868</b>	<b>11,476</b>		<b>122,234</b>	<b>97,281</b>	

Percent of Occupant Safety Equipment Use  
4-13 Years Old



Percent of Occupant Safety Equipment Use  
Deaths: 4-13 Years Old



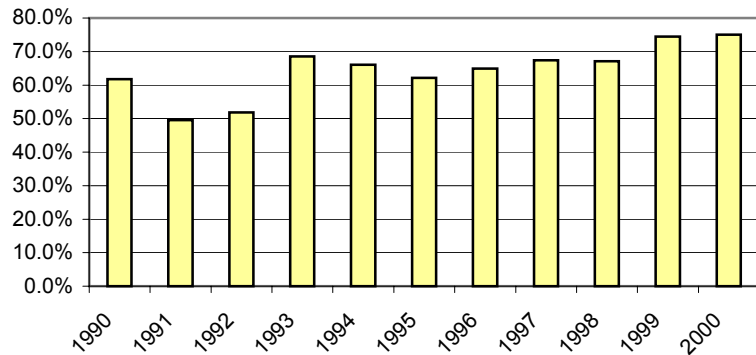
\* Excluding occupants in vehicle body types: motorcycles, mopeds, farm equipment, all-terrain-vehicle, buses, trains, other, and unknown

\*\* Safety belt usage = Shoulder belt only, Lap belt only, Both, or Child safety seat used properly

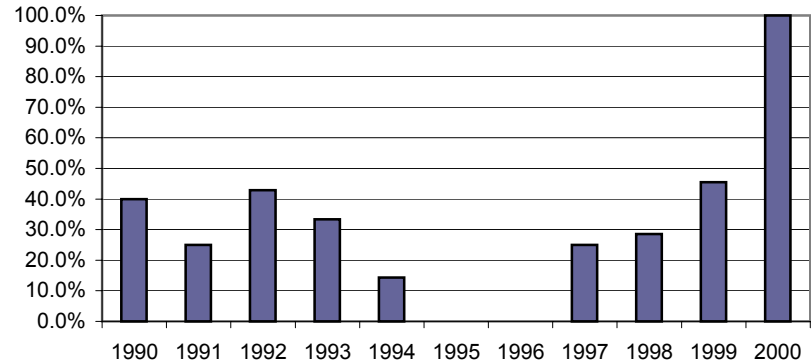
# Occupants\* Birth-3 Years Old in Accidents - Safety Belt Usage\*\* History

Child Safety Seat Required by Law	Occupants in Accidents	Occupants Using Child Safety Seat	% of Use	Deaths	Using Child Safety Seat	% of Use	Injuries	Using Child Safety Seat	% of Use	Unharmed	Using Child Safety Seat	% of Use
1990	5,434	3,356	61.8%	5	2	40.0%	554	280	50.5%	4,875	3,074	63.1%
1991	5,161	2,557	49.5%	4	1	25.0%	524	199	38.0%	4,633	2,357	50.9%
1992	5,475	2,839	51.9%	7	3	42.9%	530	185	34.9%	4,938	2,651	53.7%
1993	6,008	4,116	68.5%	6	2	33.3%	510	288	56.5%	5,492	3,826	69.7%
1994	5,502	3,634	66.0%	7	1	14.3%	462	254	55.0%	5,033	3,379	67.1%
1995	5,632	3,500	62.1%	3	-	0.0%	516	251	48.6%	5,113	3,249	63.5%
1996	5,697	3,697	64.9%	1	-	0.0%	534	273	51.1%	5,162	3,424	66.3%
1997	5,606	3,776	67.4%	4	1	25.0%	522	284	54.4%	5,080	3,491	68.7%
1998	5,903	3,960	67.1%	7	2	28.6%	495	269	54.3%	5,401	3,689	68.3%
1999	5,875	4,372	74.4%	11	5	45.5%	508	303	59.6%	5,356	4,064	75.9%
2000	5,590	4,195	75.0%	2	2	100.0%	472	302	64.0%	5,116	3,891	76.1%
<b>11-Year Total</b>	<b>61,883</b>	<b>40,002</b>		<b>57</b>	<b>19</b>		<b>5,627</b>	<b>2,888</b>		<b>56,199</b>	<b>37,095</b>	

Percent of Occupant Safety Seat Use Birth-3 Years Old



Percent of Occupant Safety Seat Use Deaths: Birth-3 Years Old



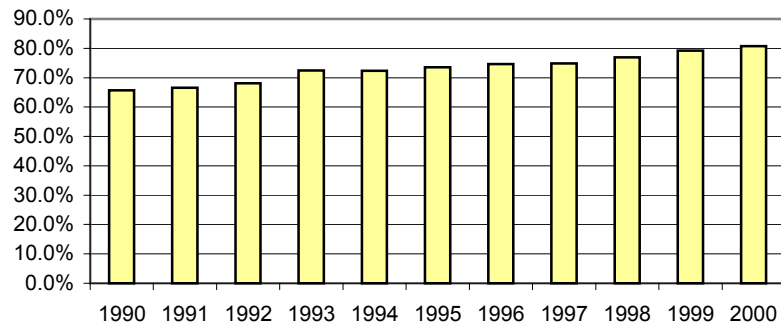
\* Excluding occupants in vehicle body types: motorcycles, mopeds, farm equipment, all-terrain-vehicle, buses, trains, other, and unknown

\*\* Safety belt usage = Child safety seat used properly

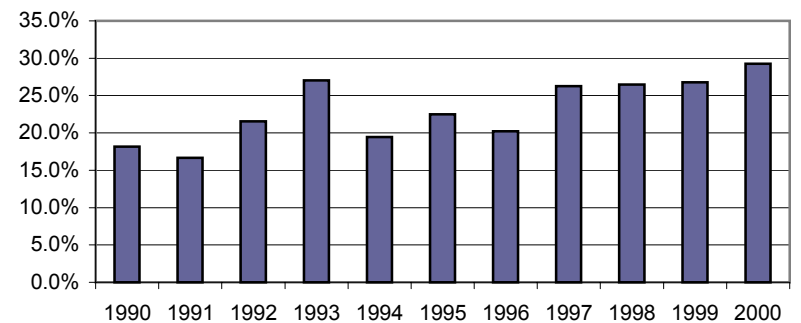
## All Occupants\* in Accidents - Safety Belt Usage\*\* History --Where the Speed Limit is Greater Than 45 mph--

	Occupants in Accidents	Occupants Using Safety Belts	% of Use	Deaths	Using Safety Belts	% of Use	Injuries	Using Safety Belts	% of Use	Unharmed	Using Safety Belts	% of Use
<b>1990</b>	39,345	25,861	65.7%	286	52	18.2%	8,811	4,663	52.9%	30,248	21,146	69.9%
<b>1991</b>	37,838	25,208	66.6%	240	40	16.7%	8,298	4,301	51.8%	29,300	20,867	71.2%
<b>1992</b>	37,798	25,738	68.1%	255	55	21.6%	8,250	4,354	52.8%	29,293	21,329	72.8%
<b>1993</b>	44,210	32,024	72.4%	270	73	27.0%	8,763	4,981	56.8%	35,177	26,970	76.7%
<b>1994</b>	43,482	31,452	72.3%	293	57	19.5%	9,203	5,179	56.3%	33,986	26,216	77.1%
<b>1995</b>	46,801	34,441	73.6%	267	60	22.5%	9,343	5,440	58.2%	37,191	28,941	77.8%
<b>1996</b>	52,620	39,275	74.6%	356	72	20.2%	10,661	6,215	58.3%	41,603	32,988	79.3%
<b>1997</b>	51,828	38,768	74.8%	312	82	26.3%	10,292	6,054	58.8%	41,224	32,632	79.2%
<b>1998</b>	55,148	42,417	76.9%	321	85	26.5%	10,306	6,154	59.7%	44,521	36,178	81.3%
<b>1999</b>	54,097	42,859	79.2%	362	97	26.8%	10,015	6,352	63.4%	43,720	36,410	83.3%
<b>2000</b>	51,347	41,458	80.7%	318	93	29.2%	9,268	6,026	65.0%	41,761	35,339	84.6%
<b>11-Year Total</b>	<b>514,514</b>	<b>379,501</b>		<b>3,280</b>	<b>766</b>		<b>103,210</b>	<b>59,719</b>		<b>408,024</b>	<b>319,016</b>	

Percent of Occupant Safety Belt Usage  
Where the Speed Limit > 45



Percent of Occupant Safety Belt Usage  
Deaths: Where the Speed Limit > 45



\* Excluding occupants in vehicle body types: motorcycles, mopeds, farm equipment, all-terrain-vehicle, buses, trains, other, and unknown. In addition, occupants in accidents where the "on road" speed limit is unknown are excluded.

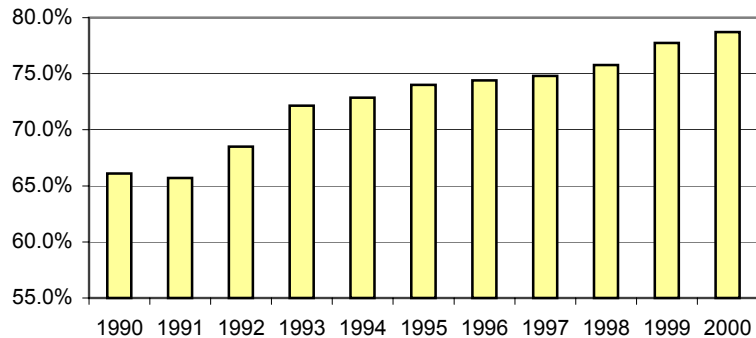
\*\* Safety belt usage = Shoulder belt only, Lap belt only, Both, or Child safety seat

# All Occupants\* in Accidents - Safety Belt Usage\*\* History

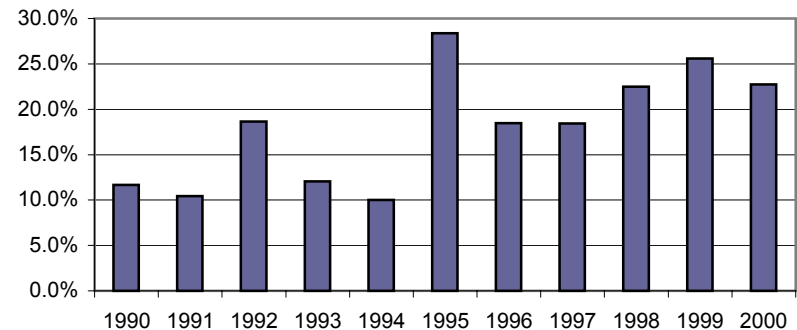
## --Where the Speed Limit is Less Than 45 mph--

	Occupants in Accidents	Occupants Using Safety Belts	% of Use	Deaths	Using Safety Belts	% of Use	Injuries	Using Safety Belts	% of Use	Unharmed	Using Safety Belts	% of Use
1990	106,767	70,582	66.1%	60	7	11.7%	17,035	9,919	58.2%	89,672	60,656	67.6%
1991	101,937	66,979	65.7%	67	7	10.4%	15,801	9,055	57.3%	86,069	57,917	67.3%
1992	113,008	77,422	68.5%	59	11	18.6%	17,932	10,698	59.7%	95,017	66,713	70.2%
1993	117,994	85,120	72.1%	83	10	12.0%	17,532	11,198	63.9%	100,379	73,912	73.6%
1994	110,581	80,580	72.9%	70	7	10.0%	17,415	11,047	63.4%	93,096	69,526	74.7%
1995	117,622	87,057	74.0%	81	23	28.4%	17,745	11,627	65.5%	99,796	75,407	75.6%
1996	118,304	88,038	74.4%	65	12	18.5%	17,355	11,429	65.9%	100,884	76,597	75.9%
1997	121,064	90,550	74.8%	76	14	18.4%	17,761	11,890	66.9%	103,227	78,646	76.2%
1998	127,843	96,863	75.8%	80	18	22.5%	17,837	12,081	67.7%	109,926	84,764	77.1%
1999	126,695	98,509	77.8%	82	21	25.6%	17,628	12,134	68.8%	108,985	86,354	79.2%
2000	123,196	96,969	78.7%	66	15	22.7%	16,565	11,621	70.2%	106,565	85,333	80.1%
<b>11-Year Total</b>	<b>1,285,011</b>	<b>938,669</b>		<b>789</b>	<b>145</b>		<b>190,606</b>	<b>122,699</b>		<b>1,093,616</b>	<b>815,825</b>	

Percent of Occupant Safety Belt Usage  
Where the Speed Limit <= 45



Percent of Occupant Safety Belt Usage  
Deaths: Where the Speed Limit <= 45



\* Excluding occupants in vehicle body types: motorcycles, mopeds, farm equipment, all-terrain-vehicle, buses, trains, other, and unknown. In addition, occupants in accidents where the "on road" speed limit is unknown are excluded.

\*\* Safety belt usage = Shoulder belt only, Lap belt only, Both, or Child safety seat