

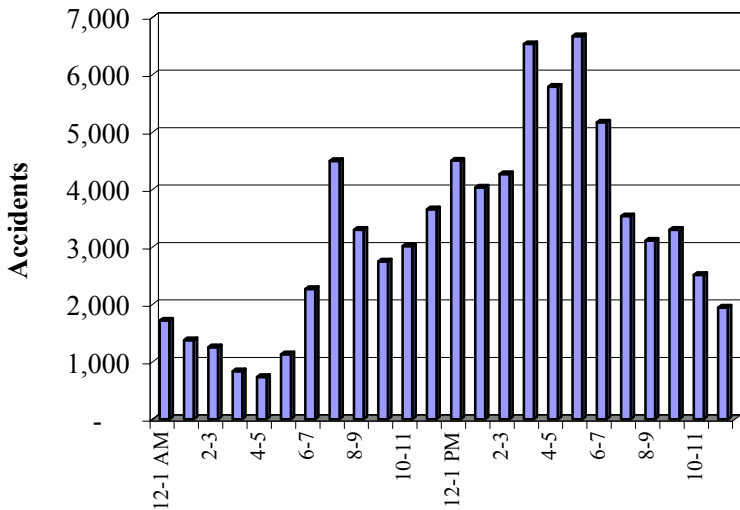


TIME TRENDS

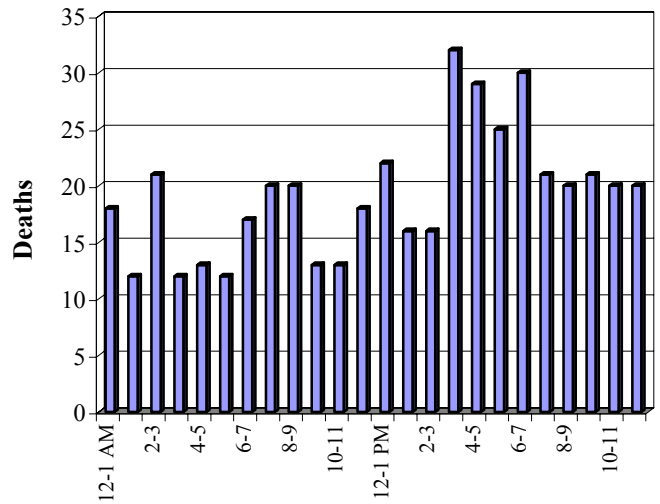
HOURLY

Time	Total Accidents	% of Total	Deaths	% of Deaths
12-1 AM	1,720	2.2%	18	3.9%
1-2	1,375	1.8%	12	2.6%
2-3	1,257	1.6%	21	4.6%
3-4	839	1.1%	12	2.6%
4-5	735	0.9%	13	2.8%
5-6	1,132	1.4%	12	2.6%
6-7	2,268	2.9%	17	3.7%
7-8	4,499	5.8%	20	4.3%
8-9	3,299	4.2%	20	4.3%
9-10	2,750	3.5%	13	2.8%
10-11	3,014	3.9%	13	2.8%
11-12	3,655	4.7%	18	3.9%
12-1 PM	4,501	5.8%	22	4.8%
1-2	4,037	5.2%	16	3.5%
2-3	4,271	5.5%	16	3.5%
3-4	6,534	8.4%	32	6.9%
4-5	5,789	7.4%	29	6.3%
5-6	6,672	8.5%	25	5.4%
6-7	5,169	6.6%	30	6.5%
7-8	3,536	4.5%	21	4.6%
8-9	3,109	4.0%	20	4.3%
9-10	3,301	4.2%	21	4.6%
10-11	2,516	3.2%	20	4.3%
11-12	1,945	2.5%	20	4.3%
Unknown	151	0.2%	0	0.0%
Total	78,074	100%	461	100%

Accidents by Time of Day



Deaths by Time of Day



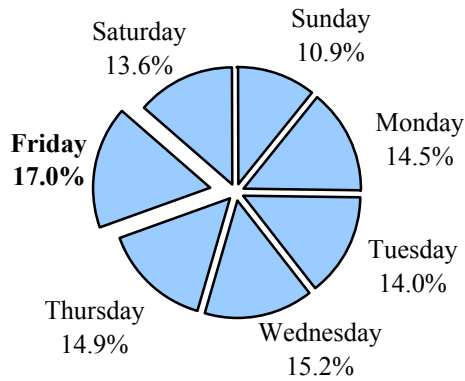


TIME TRENDS

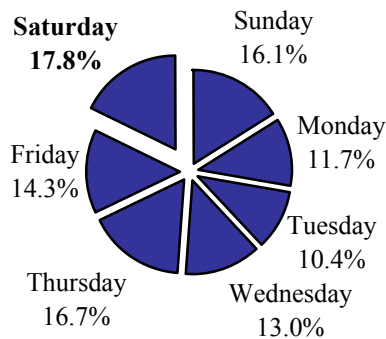
DAILY

Day	Accidents	Deaths
Sunday	8,488	74
Monday	11,279	54
Tuesday	10,897	48
Wednesday	11,819	60
Thursday	11,644	77
Friday	13,282	66
Saturday	10,586	82
Unknown	79	0
Total	78,074	461

Accidents by Day of Week



Deaths by Day of Week



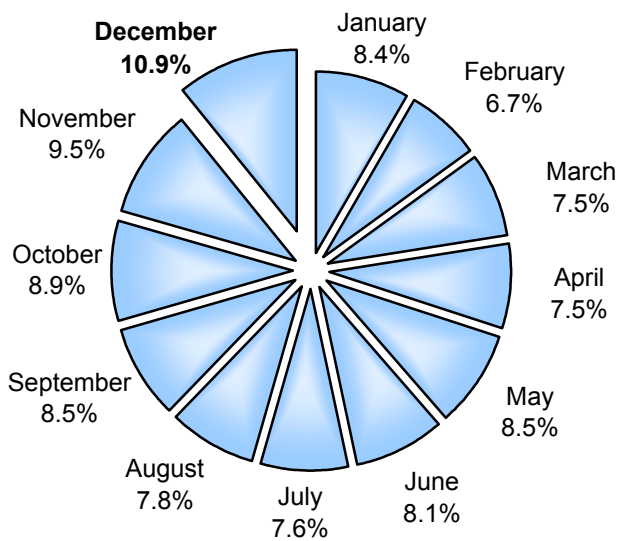


TIME TRENDS

MONTHLY

Month	Accidents	Deaths
January	6,520	22
February	5,204	20
March	5,873	35
April	5,886	44
May	6,656	32
June	6,302	43
July	5,937	46
August	6,097	63
September	6,629	40
October	6,950	35
November	7,425	38
December	8,516	43
Unknown	79	0
Total	78,074	461

Accidents by Month



Deaths by Month

