

MOTORCYCLE



PASSENGER CARS



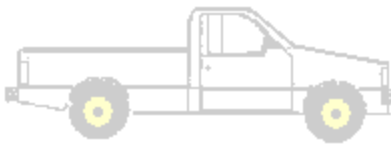
KANSAS

2012

5 AXLES



PICKUPS



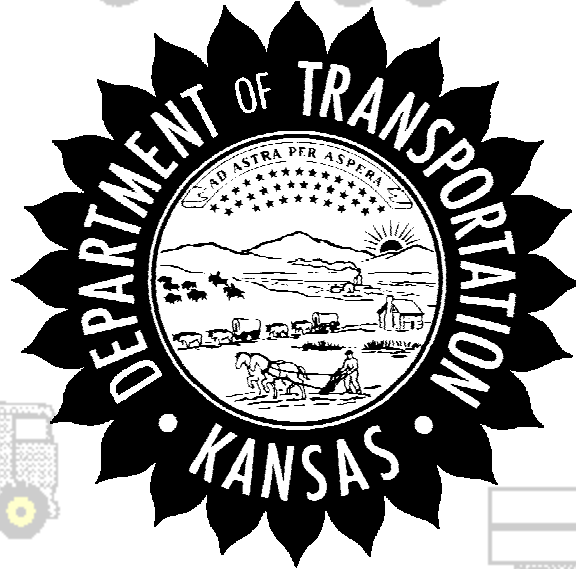
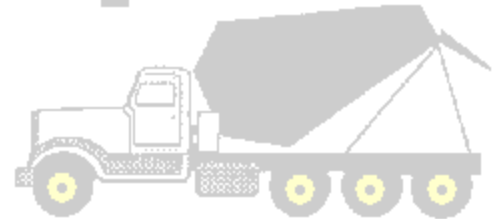
VEHICLE CLASSIFICATION

Overview & Summary

2 AXLES



≥ 4 AXLES



≤ 4 AXLES



5 AXLES



≥ 6 AXLES



Kansas Department of Transportation
Bureau of Transportation Planning
Traffic and Field Operations Unit

6 AXLES



≥ 7 AXLES



OVERVIEW & CONVENTIONS

In **2012**, the Bureau of Transportation Planning's TFO unit conducted 203 Classification Surveys in 75 Kansas counties.

<u>District</u>	<u>Counties</u>	<u>Sites</u>	<u>Surveys</u>
I	14	58	58
II	12	29	29
<u>III</u>	<u>10</u>	<u>24</u>	<u>24</u>
IV	16	33	33
V	12	30	30
VI	11	29	29
Totals	75	203	203

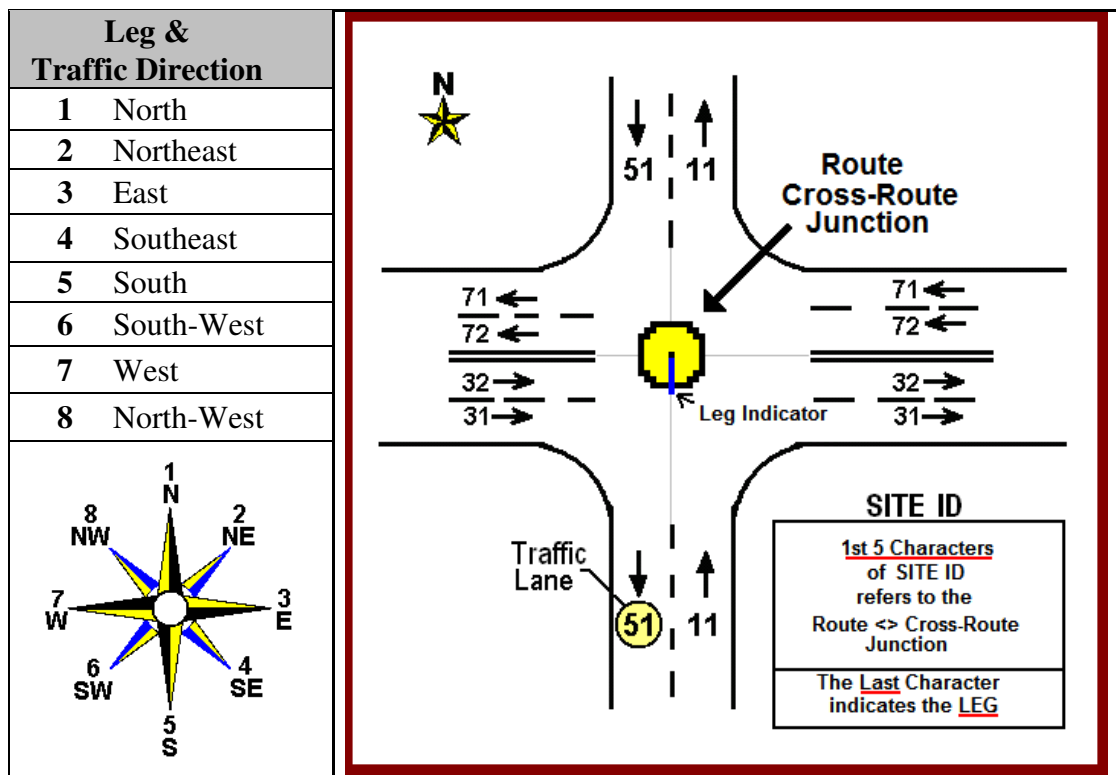
Site-IDs & Traffic Lanes

Every Classification Site has a unique **6-character** Identifier based on the

- 1) Route \ X-Route intersection (first 5 characters)
- 2) Leg or direction from that intersection

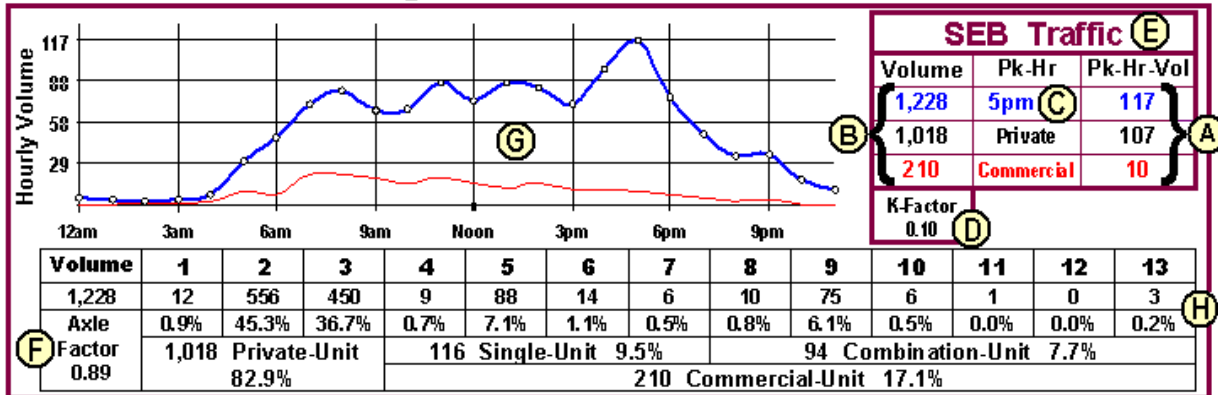
Leg values range from **1** to **8** and correspond to the points of the Compass as shown below.

Traffic lanes are identified with a (2) digit number to indicate Traffic Direction & Lane number. The **Direction Number** corresponds to one of the (8) Compass points. Lanes are numbered from the right (curb-side) for each direction.



OVERVIEW & CONVENTIONS

Understanding Classification Charts



- A) Peak-Hr Volume: Total Traffic (117) ; Class 1-3 (107) ; Class 4-13 (10)
- B) Hour-of-Day Volumes. Total Traffic (1,228) ; Class 1-3 (1,018) ; Class 4-13 (210)
- C) Site or Directional Peak-Hour (5pm)
- D) K-Factor : (Design HourFactor), Pk-Hr-Vol ÷ 24-Hr Site Vol (0.10)
- E) Site or Indicated Traffic Direction
- F) Axle Correction Factor : For Converting Axles to Vehicles, Axles X Axle Factor = Vehicle Count
- G) Hourly Traffic Volumes : Total Traffic (Blue) & Commercial Traffic (Red)
- H) 24-Hr Classification Category Volumes & Percentages

Roadway Functional Classification

TYPE	RURAL	URBAN
Interstate	1R	1U
Freeway \ Expressway	2R	2U
Principal Arterial	3R	3U
Minor Arterial	4R	4U
Major Collector	5R	5U
Minor Collector	6R	6U
Local Road	7R	7U

13 VEHICLE CLASSIFICATION CATEGORY (FHWA SCHEME F) DESCRIPTIONS

Private	Passenger Vehicles	1 Motorcycle	2 PASSENGER CARS	OTHER 2-AXLE 4 TIRE SINGLE UNIT 3 PICKUPS	2-3 AXLE PASSENGER BUS 4 BUS
	Commercial Vehicles (Trucks)	SINGLE UNIT	5 TWO AXLES	6 THREE AXLES	7 FOUR+ AXLES
SINGLE TRAILER		8 FOUR or LESS AXLES	9 FIVE AXLES	10 SIX+ AXLES	
MULTI TRAILER		11 FIVE AXLES	12 SIX AXLES	13 SEVEN+ AXLES	

2012 Classified Roads

Interstate Routes	District							KS Routes	District							City Routes	District							
	1	2	3	4	5	6	KS		1	2	3	4	5	6	KS		1	2	3	4	5	6	KS	
I-35	1						1	K-27						1	1	C-2800	1							1
I-70	6		6				12	K-28		1					1	C-2850	1							1
I-435	2						2	K-33	1						1	C-2999	1							1
Totals	9		6				15	K-39				2		2	C-3234	1							1	
US Routes	District							KS Routes	District							City Routes	District							
	1	2	3	4	5	6	KS		1	2	3	4	5	6	KS		1	2	3	4	5	6	KS	
US-24	3	1	2				6	K-43		2				2	C-3414	1							1	
US-36	2	4	2				8	K-51						1	1	C-4816		1						1
US-40 B		1					1	K-61					2	2	C-6350						1		1	
US-50					1	3	4	K-65				1		1	C-6390						1		1	
US-50 B						1	1	K-68				1		1	C-6401						1		1	
US-54					1	3	4	K-87	1					1	C-6475						1		1	
US-56	3	1			1	4	9	K-92	1					1	Totals	7	1				6		14	
US-59	2			3	4	3	10	K-96					2	2	4	Minor Collector	District							
US-69	1				1	4	9	K-99	3			1		4	1		2	3	4	5	6	KS		
US-69 B					4		6	K-101				1		1	MCS-7409			1					1	
US-73	1				4		5	K-116	1					1	Totals			1					1	
US-75	4				1		1	K-140		1				1										
US-77		1					1	K-144						1	1									
US-81		2					2	K-149		1				1										
US-81 B		1					1	K-153		1				1										
US-83			3				4	K-156					1	1										
US-160					2	1	2	K-177	1	2				3										
US-166					3		3	K-187	1					1										
US-169	1				2		3	K-190						1	1									
US-183					3		4	K-192	1					1										
US-281					2		4	K-237	1					1										
US-400							1	K-254					1	1										
Totals	17	11	12	23	12	18	93	K-383				1		1										
								Totals	22	17	5	8	11	10	73									
KS Routes	District							KS Routes	District							City Routes	District							
	1	2	3	4	5	6	KS		1	2	3	4	5	6	KS		1	2	3	4	5	6	KS	
K-4	5	3			1		9	Rural Secondary					2	2	RS-266								2	
K-7	1				2		3	RS-303					1	1	RS-949							1	1	
K-9	1		1				2	RS-1292	1					1	RS-1292	1							1	
K-10	1						1	RS-1604	1					1	RS-1604	1							1	
K-13	1						1	RS-2403	1					1	RS-2403	1							1	
K-14						2	2	Totals	3				2	1	1	7								
K-15		1					1	City Routes	District															
K-16	2						2	1	2	3	4	5	6	KS	C-1802						1	1		
K-18		5	2				7	C-1820						1	1	C-1820						1	1	
K-19					2		2	C-2712	1					1	C-2712	1							1	
K-23							2	C-2717	1					1	C-2717	1							1	
K-25						2	2																	

**2012 VEHICLE CLASSIFICATION by FUNCTIONAL CLASS
SUMMARY BY FUNCTIONAL CLASSIFICATION**

Fun Class	No of Locs	FHWA VEHICLE TYPE CATEGORY													HEAVY COMMERCIAL			Vehicle Total	Axle Factor
		1	2	3	4	5	6	7	8	9	10	11	12	13	*SU	**Comb	Total		
1R	8	85	6,918	2,650	25	253	97	20	178	2,417	49	234	90	37	395	3,004	3,399	13,052	0.74
		0.6%	53.0%	20.3%	0.2%	1.9%	0.7%	0.2%	1.4%	18.5%	0.4%	1.8%	0.7%	0.3%	3.0%	23.0%	26.0%		
1U	7	297	41,546	14,874	49	1,456	656	100	379	3,811	99	342	69	83	2,262	4,783	7,045	63,762	0.89
		0.5%	65.2%	23.3%	0.1%	2.3%	1.0%	0.2%	0.6%	6.0%	0.2%	0.5%	0.1%	0.1%	3.5%	7.5%	11.0%		
2R	9	61	4,679	2,043	11	150	54	10	87	819	20	50	12	6	225	994	1,219	8,002	0.84
		0.8%	58.5%	25.5%	0.1%	1.9%	0.7%	0.1%	1.1%	10.2%	0.3%	0.6%	0.1%	0.1%	2.8%	12.4%	15.2%		
2U	6	156	13,881	3,632	6	212	113	20	138	402	25	15	15	24	350	619	969	18,638	0.95
		0.8%	74.5%	19.5%	0.0%	1.1%	0.6%	0.1%	0.7%	2.2%	0.1%	0.1%	0.1%	0.1%	1.9%	3.3%	5.2%		
3R	54	29	2,080	981	3	48	47	7	50	541	26	16	6	6	105	645	750	3,840	0.79
		0.8%	54.2%	25.5%	0.1%	1.2%	1.2%	0.2%	1.3%	14.1%	0.7%	0.4%	0.2%	0.1%	2.7%	16.8%	19.5%		
3U	14	72	9,168	2,582	11	167	62	10	52	361	14	4	2	5	250	438	688	12,510	0.95
		0.6%	73.3%	20.6%	0.1%	1.3%	0.5%	0.1%	0.4%	2.9%	0.1%	0.0%	0.0%	0.0%	2.0%	3.5%	5.5%		
4R	67	16	955	516	1	25	29	3	23	159	10	4	1	2	57	199	256	1,743	0.85
		0.9%	54.8%	29.6%	0.1%	1.4%	1.6%	0.2%	1.3%	9.1%	0.6%	0.2%	0.0%	0.1%	3.3%	11.4%	14.7%		
4U	10	53	7,450	2,296	16	168	38	8	20	63	2	1	0	1	230	88	317	10,117	0.98
		0.5%	73.6%	22.7%	0.2%	1.7%	0.4%	0.1%	0.2%	0.6%	0.0%	0.0%	0.0%	0.0%	2.3%	0.9%	3.1%		
5R	25	10	583	287	0	15	7	1	6	19	1	1	0	1	24	28	52	933	0.95
		1.1%	62.5%	30.8%	0.0%	1.6%	0.8%	0.1%	0.6%	2.0%	0.2%	0.1%	0.0%	0.1%	2.6%	3.0%	5.6%		
5U	2	37	3,227	626	7	37	4	1	5	1	1	1	0	0	49	7	55	3,945	1.00
		0.9%	81.8%	15.9%	0.2%	0.9%	0.1%	0.0%	0.1%	0.0%	0.0%	0.0%	0.0%	0.0%	1.2%	0.2%	1.4%		
6R	1	0	12	25	0	1	3	0	0	4	0	0	1	1	3	6	9	45	0.81
		0.0%	25.6%	55.6%	0.0%	1.1%	5.6%	0.0%	0.0%	8.9%	0.0%	0.0%	2.2%	1.1%	6.7%	12.2%	18.9%		
AVG %	203	74	8,227	2,774	12	230	101	16	85	782	22	61	18	15	359	983	1,342	12,417	0.89
		0.6%	66.3%	22.3%	0.1%	1.9%	0.8%	0.1%	0.7%	6.3%	0.2%	0.5%	0.1%	0.1%	2.9%	7.9%	10.8%		

**2010 - 2012 VEHICLE CLASSIFICATION by FUNCTIONAL CLASS
SUMMARY BY FUNCTIONAL CLASSIFICATION**

Fun Class	No of Locs	FHWA VEHICLE TYPE CATEGORY													HEAVY COMMERCIAL			Vehicle Total	Axle Factor
		1	2	3	4	5	6	7	8	9	10	11	12	13	*SU	**Comb	Total		
1R	30	76	7,331	2,721	28	274	97	20	188	2,467	48	204	83	46	419	3,036	3,454	13,582	0.75
		0.6%	54.0%	20.0%	0.2%	2.0%	0.7%	0.1%	1.4%	18.2%	0.4%	1.5%	0.6%	0.3%	3.1%	22.4%	25.4%		
1U	23	258	33,152	11,079	31	880	439	68	326	2,587	65	201	58	62	1,418	3,299	4,717	49,205	0.90
		0.5%	67.4%	22.5%	0.1%	1.8%	0.9%	0.1%	0.7%	5.3%	0.1%	0.4%	0.1%	0.1%	2.9%	6.7%	9.6%		
2R	20	73	6,804	2,245	9	131	76	12	116	837	27	36	9	6	228	1,032	1,260	10,382	0.87
		0.7%	65.5%	21.6%	0.1%	1.3%	0.7%	0.1%	1.1%	8.1%	0.3%	0.3%	0.1%	0.1%	2.2%	9.9%	12.1%		
2U	15	155	17,787	5,184	8	217	195	36	159	548	29	22	16	18	457	792	1,248	24,374	0.95
		0.6%	73.0%	21.3%	0.0%	0.9%	0.8%	0.1%	0.7%	2.3%	0.1%	0.1%	0.1%	0.1%	1.9%	3.2%	5.1%		
3R	170	32	2,424	1,120	4	58	50	7	56	539	23	20	4	4	120	646	766	4,341	0.81
		0.7%	55.8%	25.8%	0.1%	1.3%	1.1%	0.2%	1.3%	12.4%	0.5%	0.4%	0.1%	0.1%	2.8%	14.9%	17.6%		
3U	44	67	10,243	3,007	14	198	63	12	68	259	11	5	3	12	287	358	645	13,962	0.96
		0.5%	73.4%	21.5%	0.1%	1.4%	0.5%	0.1%	0.5%	1.9%	0.1%	0.0%	0.0%	0.1%	2.1%	2.6%	4.6%		
4R	222	14	965	507	1	23	25	3	21	154	9	3	1	2	51	189	240	1,726	0.85
		0.8%	55.9%	29.4%	0.0%	1.3%	1.4%	0.2%	1.2%	8.9%	0.5%	0.2%	0.0%	0.1%	2.9%	10.9%	13.9%		
4U	31	59	7,046	2,033	10	118	22	5	23	43	2	2	1	1	155	72	227	9,364	0.99
		0.6%	75.2%	21.7%	0.1%	1.3%	0.2%	0.1%	0.2%	0.5%	0.0%	0.0%	0.0%	0.0%	1.7%	0.8%	2.4%		
5R	114	7	363	219	0	10	9	1	6	34	2	1	0	1	21	45	66	655	0.90
		1.1%	55.4%	33.4%	0.0%	1.6%	1.4%	0.2%	1.0%	5.2%	0.4%	0.2%	0.0%	0.2%	3.2%	6.9%	10.1%		
5U	5	34	2,903	753	3	30	10	3	8	6	1	1	0	1	47	16	63	3,753	0.99
		0.9%	77.3%	20.1%	0.1%	0.8%	0.3%	0.1%	0.2%	0.2%	0.0%	0.0%	0.0%	0.0%	1.2%	0.4%	1.7%		
6R	1	0	12	25	0	1	3	0	0	4	0	0	1	1	3	6	9	45	0.81
		0.0%	25.6%	55.6%	0.0%	1.1%	5.6%	0.0%	0.0%	8.9%	0.0%	0.0%	2.2%	1.1%	6.7%	12.2%	18.9%		
7R	4	1	74	41	0	2	4	0	6	7	0	0	0	1	7	14	21	137	0.86
		1.0%	54.0%	29.7%	0.0%	1.4%	3.3%	0.1%	4.3%	5.1%	0.2%	0.3%	0.1%	0.5%	4.7%	10.5%	15.3%		
AVG %	679	65	7,425	2,411	9	162	83	14	81	624	18	41	15	13	268	792	1,060	10,961	0.90
		0.6%	67.7%	22.0%	0.1%	1.5%	0.8%	0.1%	0.7%	5.7%	0.2%	0.4%	0.1%	0.1%	2.4%	7.2%	9.7%		

District 1

2012 Vehicle Classification Summary

Kansas Dept of Transportation

County	Route	LOCATION DESCRIPTION	FC	VEHICLE CLASSIFICATION CATEGORY													Truck Total	ADT Surveys	District Start Pg
				AF	1	2	3	4	5	6	7	8	9	10	11	12			
Brown	US-75	US-75, 1.5 MI N OF SABETHA	3R	9	871	441	3	22	23	5	37	673	33	7	9	1	811	2,132	I
CPQL11	1 MI N OF K-246		0.65	0.4%	40.9%	20.7%	0.1%	1.0%	1.1%	0.2%	1.7%	31.6%	1.5%	0.3%	0.4%	0.0%	38.0%	1	8
Brown	RS-2403 (OLD US-75)	OLD US-75 N OF US-36, 3.25 MI S OF SABETHA	5R	3	567	311	1	23	8	1	6	47	2	2	0	2	90	971	I
CPZIC1	US-36		0.91	0.3%	58.4%	32.0%	0.1%	2.4%	0.8%	0.1%	0.6%	4.8%	0.2%	0.2%	0.0%	0.2%	9.3%	1	10
Brown	US-75	US-75 N OF US-36	3R	29	2,521	921	5	32	26	2	75	595	23	5	6	4	774	4,245	I
CTQID1	US-36		0.80	0.7%	59.4%	21.7%	0.1%	0.8%	0.6%	0.1%	1.8%	14.0%	0.5%	0.1%	0.1%	0.1%	18.2%	1	12
Brown	US-75	US-75 S OF US-36, W OF FAIRVIEW	3R	12	1,728	670	5	44	33	9	89	747	32	7	10	3	978	3,386	I
CTQID5	US-36		0.72	0.3%	51.0%	19.8%	0.1%	1.3%	1.0%	0.3%	2.6%	22.1%	0.9%	0.2%	0.3%	0.1%	28.9%	1	14
Brown	RS-1292 (270th)	RS-1292 E OF RS-62, 4 MI E OF SABETHA	5R	5	246	156	0	10	7	1	9	9	1	1	0	2	37	443	I
CV2K63	RS-62 (COYOTE RD)		0.93	1.0%	55.5%	35.1%	0.0%	2.3%	1.5%	0.1%	2.0%	1.9%	0.1%	0.1%	0.0%	0.3%	8.4%	1	16
Brown	US-36	US-36 E OF GOLD FINCH RD	3R	64	1,903	822	0	41	57	6	56	715	33	4	6	3	921	3,711	I
D0HIO3	RS-61 (GOLD FINCH RD)		0.75	1.7%	51.3%	22.2%	0.0%	1.1%	1.5%	0.2%	1.5%	19.3%	0.9%	0.1%	0.2%	0.1%	24.8%	1	18
Douglas	K-10	K-10 N OF CLINTON PKWY, W OF LAWRENCE	3U	96	7,928	1,970	2	83	81	14	81	406	6	5	1	1	678	10,671	I
DOAR31	C-3266 (CLINTON PKWY)		0.93	0.9%	74.3%	18.5%	0.0%	0.8%	0.8%	0.1%	0.8%	3.8%	0.1%	0.0%	0.0%	0.0%	6.3%	1	20
Douglas	I-70	I-70 W OF W LAWRENCE EXIT 202, N OF LAWRENCE	1U	250	19,217	4,487	38	416	338	27	589	3,648	72	336	136	204	5,801	29,754	I
DTVSL7	C-3215 (McDONALD DR)		0.79	0.8%	64.6%	15.1%	0.1%	1.4%	1.1%	0.1%	2.0%	12.3%	0.2%	1.1%	0.5%	0.7%	19.5%	1	22
Douglas	C-3234 (4th)	4th ST W OF WISCONSON, IN LAWRENCE	5U	46	3,256	408	1	10	3	0	5	1	0	2	0	0	21	3,731	I
DU1S67	WISCONSON		1.00	1.2%	87.3%	10.9%	0.0%	0.3%	0.1%	0.0%	0.1%	0.0%	0.0%	0.0%	0.0%	0.0%	0.6%	1	24
Douglas	I-70	I-70 E OF US-40/59, E LAWRENCE EXIT 204	1R	59	17,949	7,615	55	701	267	22	268	3,899	81	268	152	171	5,880	31,503	I
DVMSP3	US-40		0.81	0.2%	57.0%	24.2%	0.2%	2.2%	0.8%	0.1%	0.8%	12.4%	0.3%	0.8%	0.5%	0.5%	18.7%	1	26
Douglas	K-33	K-33 S OF US-56, N OF WELLSVILLE	5R	19	1,031	500	0	20	17	2	13	30	1	0	0	1	83	1,631	I
E7MLX5	US-56		0.96	1.1%	63.2%	30.6%	0.0%	1.2%	1.0%	0.1%	0.8%	1.8%	0.1%	0.0%	0.0%	0.1%	5.1%	1	28
Jackson	K-116	K-116 E OF K-16, E OF HOLTON	5R	7	633	360	0	17	15	3	9	35	1	1	0	1	80	1,079	I
CYB6T3	K-16		0.93	0.6%	58.6%	33.4%	0.0%	1.5%	1.4%	0.3%	0.8%	3.2%	0.1%	0.0%	0.0%	0.0%	7.4%	1	30
Jackson	K-16	K-16 S OF K-116, SE OF HOLTON	4R	0	471	255	0	5	7	1	4	13	2	0	0	1	32	758	I
CYB6T5	K-116		0.96	0.0%	62.1%	33.7%	0.0%	0.7%	0.9%	0.1%	0.5%	1.6%	0.3%	0.0%	0.0%	0.2%	4.2%	1	32
Jefferson	K-92	K-92 E OF K-4, 3.5 MI NE OF MERIDEN	4R	55	1,919	660	0	14	23	2	16	11	0	2	2	0	68	2,701	I
D9DZR3	K-4		0.98	2.0%	71.1%	24.4%	0.0%	0.5%	0.8%	0.1%	0.6%	0.4%	0.0%	0.1%	0.1%	0.0%	2.5%	1	34
Jefferson	K-237	K-237 1 MI NW OF US-24, NW OF PERRY	5R	20	795	336	0	4	3	1	15	3	0	3	1	1	31	1,181	I
DDGVR1	31st ST		0.97	1.7%	67.3%	28.5%	0.0%	0.4%	0.3%	0.1%	1.3%	0.3%	0.0%	0.2%	0.0%	0.1%	2.6%	1	36

District 1

2012 Vehicle Classification Summary

Kansas Dept of Transportation

County	Route	LOCATION DESCRIPTION	FC	VEHICLE CLASSIFICATION CATEGORY													Truck Total	ADT Surveys	District Start Pg
				AF	1	2	3	4	5	6	7	8	9	10	11	12			
Jefferson	K-4	K-4 SW OF K-4 ALT, AT NORTONVILLE	3R	2	869	330	0	16	11	3	18	214	4	2	1	1	268	1,468	I
DNN5C6	K-4 ALT		0.80	0.1%	59.2%	22.4%	0.0%	1.1%	0.7%	0.2%	1.2%	14.5%	0.3%	0.1%	0.0%	0.0%	18.2%	1	38
Jefferson	US-59	US-59 N OF US-24, E OF PERRY	4R	38	1,987	767	1	35	34	2	24	92	7	0	0	1	197	2,988	I
DOAUV1	US-24		0.94	1.3%	66.5%	25.7%	0.0%	1.2%	1.1%	0.1%	0.8%	3.1%	0.2%	0.0%	0.0%	0.0%	6.6%	1	40
Jefferson	US-24	US-24 E OF US-59, E OF PERRY	4R	100	2,543	1,067	1	45	114	11	42	297	22	2	0	6	538	4,247	I
DOAUV3	US-59		0.87	2.4%	59.9%	25.1%	0.0%	1.1%	2.7%	0.3%	1.0%	7.0%	0.5%	0.0%	0.0%	0.1%	12.7%	1	42
Jefferson	K-192	K-192 E OF US-59, W OF WINCHESTER	4R	1	434	207	0	6	1	0	5	7	0	0	0	2	22	663	I
DP5323	US-59		0.97	0.2%	65.4%	31.2%	0.0%	0.9%	0.2%	0.1%	0.8%	1.1%	0.1%	0.0%	0.0%	0.3%	3.3%	1	44
Jefferson	US-59	US-59 S OF N JCT K-16, N OF OSKALOOSA	4R	13	886	387	1	24	17	4	27	84	3	1	0	2	160	1,446	I
DP5325	K-16		0.89	0.9%	61.3%	26.8%	0.0%	1.7%	1.1%	0.2%	1.8%	5.8%	0.2%	0.0%	0.0%	0.1%	11.1%	1	46
Jefferson	K-16	K-16 E OF US-59 (S JCT), AT OSKALOOSA	4R	41	1,471	674	1	28	21	3	20	32	5	1	0	4	112	2,298	I
DPJZ23	US-59		0.96	1.8%	64.0%	29.3%	0.0%	1.2%	0.9%	0.1%	0.8%	1.4%	0.2%	0.0%	0.0%	0.2%	4.9%	1	48
Johnson	US-56	US-56 W OF MOONLIGHT, IN GARDNER	4R	140	13,564	4,106	14	262	123	13	39	226	11	4	0	0	690	18,499	I
EJGND7	MULBERRY		0.97	0.8%	73.3%	22.2%	0.1%	1.4%	0.7%	0.1%	0.2%	1.2%	0.1%	0.0%	0.0%	0.0%	3.7%	1	50
Johnson	K-7	K-7 S OF SHAWNEE MISSION PKWY, IN SHAWNEE	2U	324	19,501	5,236	3	251	201	36	195	460	55	20	59	49	1,328	26,389	I
EMVTH5	C-2724 (SHAWNEE MS PKWY)		0.95	1.2%	73.9%	19.8%	0.0%	1.0%	0.8%	0.1%	0.7%	1.7%	0.2%	0.1%	0.2%	0.2%	5.0%	1	52
Johnson	RS-1604 (WEBSTER ST)	WEBSTER ST S OF NORTH ST, IN SPRING HILL	5R	111	5,498	1,744	1	71	32	3	23	20	2	3	0	6	160	7,513	I
EPLML5	NORTH ST		0.99	1.5%	73.2%	23.2%	0.0%	0.9%	0.4%	0.0%	0.3%	0.3%	0.0%	0.0%	0.0%	0.1%	2.1%	1	54
Johnson	I-35	I-35 NE OF US-169 / K-7, IN OLATHE	1U	355	45,292	17,574	41	1,586	562	153	330	4,725	102	220	39	34	7,790	71,011	I
EQ4OX2	US-169		0.89	0.5%	63.8%	24.7%	0.1%	2.2%	0.8%	0.2%	0.5%	6.7%	0.1%	0.3%	0.1%	0.0%	11.0%	1	56
Johnson	I-435	I-435 S OF 87th ST, IN LENEXA	1U	101	46,982	17,833	48	1,535	600	134	292	2,231	74	180	39	73	5,203	70,118	I
ESMSG5	C-2800 (87th ST)		0.94	0.1%	67.0%	25.4%	0.1%	2.2%	0.9%	0.2%	0.4%	3.2%	0.1%	0.3%	0.1%	0.1%	7.4%	1	58
Johnson	C-2717 (79th)	79th ST W OF LACKMAN RD, IN LENEXA	5U	29	3,197	844	14	64	4	2	5	1	1	0	0	0	90	4,159	I
ETMSW7	C-2701 (LACKMAN RD)		1.00	0.7%	76.9%	20.3%	0.3%	1.5%	0.1%	0.0%	0.1%	0.0%	0.0%	0.0%	0.0%	0.0%	2.2%	1	60
Johnson	C-2712 (JOHNSON DR)	JOHNSON DR E OF CAENEN, IN SHAWNEE	4U	92	10,193	2,639	21	142	14	9	25	5	0	0	0	0	214	13,138	I
EVPU03	CAENEN		1.00	0.7%	77.6%	20.1%	0.2%	1.1%	0.1%	0.1%	0.2%	0.0%	0.0%	0.0%	0.0%	0.0%	1.6%	1	62
Johnson	C-2850 (103rd ST)	103rd ST W OF GODDARD, IN OVERLAND PARK	4U	64	13,492	2,623	11	147	15	6	15	9	2	0	0	0	203	16,382	I
EXGRM7	GODDARD		1.00	0.4%	82.4%	16.0%	0.1%	0.9%	0.1%	0.0%	0.1%	0.1%	0.0%	0.0%	0.0%	0.0%	1.2%	1	64
Johnson	C-2800 (SANTA FE TRAIL DR)	SANTA FE TRAIL NE OF HEMLOCK, IN OVERLAND PARK	3U	45	11,574	2,808	11	204	29	6	18	5	1	0	0	0	272	14,698	I
EZASO2	HEMLOCK		1.00	0.3%	78.7%	19.1%	0.1%	1.4%	0.2%	0.0%	0.1%	0.0%	0.0%	0.0%	0.0%	0.0%	1.9%	1	66

District 1

2012 Vehicle Classification Summary

Kansas Dept of Transportation

County	Route	LOCATION DESCRIPTION	FC	VEHICLE CLASSIFICATION CATEGORY													Truck Total	ADT Surveys	District Start Pg
				AF	1	2	3	4	5	6	7	8	9	10	11	12			
Johnson	US-69	METCALF N OF 63rd ST, IN OVERLAND PK	2U	206	32,643	5,283	5	219	93	11	305	119	13	45	25	91	924	39,056	I
F04TU1	US-56		0.98	0.5%	83.6%	13.5%	0.0%	0.6%	0.2%	0.0%	0.8%	0.3%	0.0%	0.1%	0.1%	0.2%	2.4%	1	68
Johnson	US-56	63rd ST E OF METCALF AVE, IN OVERLAND PARK	3U	144	31,222	4,500	16	222	132	9	163	45	2	15	19	29	652	36,518	I
F04TU3	US-69		0.99	0.4%	85.5%	12.3%	0.0%	0.6%	0.4%	0.0%	0.4%	0.1%	0.0%	0.0%	0.1%	0.1%	1.8%	1	70
Johnson	US-169	METCALF AVE S OF 72nd TERR, IN OVERLAND PK	3U	108	27,743	5,777	40	403	58	12	83	126	5	1	0	0	727	34,353	I
F07TC5	72nd TERR		0.99	0.3%	80.8%	16.8%	0.1%	1.2%	0.2%	0.0%	0.2%	0.4%	0.0%	0.0%	0.0%	0.0%	2.1%	1	72
Leavenworth	C-3414 (DESOTO RD)	DESOTO RD N OF IDA, IN LANSING	4U	68	5,338	1,270	0	19	5	1	12	1	0	1	0	2	42	6,717	I
EHE0W1	C-3406 (IDA)		1.00	1.0%	79.5%	18.9%	0.0%	0.3%	0.1%	0.0%	0.2%	0.0%	0.0%	0.0%	0.0%	0.0%	0.6%	1	74
Lyon	K-99	K-99 N OF K-170, N OF EMPORIA	4R	1	457	204	0	14	9	3	3	105	6	0	0	0	138	800	I
C6JDP1	K-170		0.82	0.1%	57.1%	25.5%	0.0%	1.8%	1.1%	0.3%	0.3%	13.1%	0.7%	0.0%	0.0%	0.0%	17.3%	1	76
Marshall	US-36	US-36 E OF K-99, S OF BEATTIE	3R	9	1,089	615	1	45	22	4	36	443	19	1	0	2	572	2,284	I
BHBI13	K-99		0.75	0.4%	47.7%	26.9%	0.0%	2.0%	1.0%	0.2%	1.6%	19.4%	0.8%	0.0%	0.0%	0.1%	25.0%	1	78
Marshall	K-99	K-99 S OF US-36, S OF BEATTIE	4R	2	655	431	1	15	11	0	8	80	6	0	0	1	120	1,207	I
BHBI15	US-36		0.89	0.1%	54.3%	35.7%	0.0%	1.2%	0.9%	0.0%	0.6%	6.6%	0.5%	0.0%	0.0%	0.0%	9.9%	1	80
Marshall	K-87	K-87 S OF US-36, SE OF BEATTIE	5R	2	69	51	0	3	1	0	1	8	0	0	0	0	13	134	I
BNBI35	US-36		0.91	1.1%	51.5%	38.1%	0.0%	2.2%	0.7%	0.0%	0.7%	5.6%	0.0%	0.0%	0.0%	0.0%	9.3%	1	82
Marshall	K-9	K-9 E OF RS-442, 1 MI W OF E CO LI AT VERMILLION	5R	1	177	126	0	12	4	2	3	20	2	1	0	1	43	346	I
BSTEK3	RS-442 (30th RD)		0.89	0.1%	51.2%	36.4%	0.0%	3.3%	1.0%	0.4%	0.9%	5.6%	0.6%	0.3%	0.0%	0.1%	12.3%	1	84
Nemaha	K-187	K-187 S OF US-36, W OF SENECA	5R	1	449	280	1	7	15	1	4	20	1	2	2	1	52	781	I
C1ZI65	US-36		0.94	0.1%	57.5%	35.9%	0.1%	0.9%	1.9%	0.1%	0.5%	2.5%	0.1%	0.2%	0.2%	0.1%	6.6%	1	86
Osage	US-56	US-56 N OF US-56/K-31 (S JCT), N OF OSAGE CITYXX	4R	30	1,140	552	0	14	30	3	10	26	2	0	0	1	84	1,805	I
COYHV1	US-56		0.96	1.6%	63.1%	30.6%	0.0%	0.7%	1.6%	0.2%	0.5%	1.4%	0.1%	0.0%	0.0%	0.0%	4.7%	1	88
Pottawatomie	K-13	K-13 S OF K-16	4R	10	716	358	0	8	10	2	9	26	6	0	0	0	59	1,142	I
BAN5C5	K-16		0.95	0.9%	62.7%	31.3%	0.0%	0.7%	0.8%	0.2%	0.7%	2.3%	0.5%	0.0%	0.0%	0.0%	5.2%	1	90
Pottawatomie	US-24	US-24 W OF RS-2223, E OF MANHATTAN	3R	177	10,351	4,933	3	126	106	9	106	205	9	6	0	4	572	16,032	I
BDAY87	RS-2223 (LAKE ELBO RD)		0.97	1.1%	64.6%	30.8%	0.0%	0.8%	0.7%	0.1%	0.7%	1.3%	0.1%	0.0%	0.0%	0.0%	3.6%	1	92
Shawnee	US-75	US-75 S OF 46th, N OF TOPEKA	3R	168	18,586	5,605	13	134	275	32	176	947	26	9	13	10	1,633	25,993	I
CWGWK5	RS-1254 (46th)		0.93	0.6%	71.5%	21.6%	0.0%	0.5%	1.1%	0.1%	0.7%	3.6%	0.1%	0.0%	0.0%	0.0%	6.3%	1	94
Shawnee	US-24	US-24 E OF BRICKYARD, (E OF US-75) IN TOPEKA	2U	107	12,300	4,863	22	469	124	38	103	542	16	9	1	0	1,322	18,591	I
CWJVB3	C-5315 (BRICKYARD)		0.95	0.6%	66.2%	26.2%	0.1%	2.5%	0.7%	0.2%	0.6%	2.9%	0.1%	0.0%	0.0%	0.0%	7.1%	1	96

District 1

2012 Vehicle Classification Summary

Kansas Dept of Transportation

County	Route	LOCATION DESCRIPTION	FC	VEHICLE CLASSIFICATION CATEGORY													Truck Total	ADT Surveys	District Start Pg
				AF	1	2	3	4	5	6	7	8	9	10	11	12			
Shawnee	K-4	K-4 S OF US-24, (S JCT)	3R	9	7,206	1,145	49	245	81	8	94	298	8	15	2	83	885	9,244	I
D4GVH5	US-24		0.92	0.1%	78.0%	12.4%	0.5%	2.6%	0.9%	0.1%	1.0%	3.2%	0.1%	0.2%	0.0%	0.9%	9.6%	1	98
Wabaunsee	K-177	K-177 S OF K-4 (N JCT), AT WB - MR CO LINE	4R	19	1,271	519	0	18	15	2	19	87	5	2	0	1	150	1,959	I
BCSNR5	K-4		0.92	1.0%	64.9%	26.5%	0.0%	0.9%	0.8%	0.1%	1.0%	4.5%	0.3%	0.1%	0.0%	0.1%	7.7%	1	100
Wabaunsee	K-99	K-99 N OF K-4, S OF ALMA	4R	10	239	171	1	10	13	0	7	67	3	1	1	2	102	521	I
BSPOZ1	K-4		0.81	1.9%	45.8%	32.7%	0.1%	1.9%	2.4%	0.0%	1.2%	12.8%	0.6%	0.2%	0.1%	0.3%	19.6%	1	102
Wabaunsee	K-4	K-4 SE OF K-4/K-99 JCT, S OF ALMA	4R	9	207	143	1	7	8	2	7	52	3	1	1	4	84	443	I
BSPOZ4	K-99		0.80	2.0%	46.8%	32.3%	0.2%	1.5%	1.8%	0.3%	1.5%	11.8%	0.7%	0.1%	0.1%	0.9%	18.9%	1	104
Wabaunsee	K-4	K-4 SW OF K-4/K-99 JCT, S OF ALMA	5R	2	67	79	0	4	2	1	2	13	2	0	0	1	23	170	I
BSPOZ6	K-99		0.87	1.2%	39.4%	46.2%	0.0%	2.1%	1.2%	0.3%	1.2%	7.4%	0.9%	0.0%	0.0%	0.3%	13.2%	1	106
Wabaunsee	K-4	K-4 S OF M.V. HS RD, N OF ESKRIDGE	3R	11	572	259	0	20	10	1	3	14	1	0	0	0	49	890	I
C6POU5	RS-1072 (M.V. HS RD)		0.97	1.2%	64.3%	29.1%	0.0%	2.2%	1.1%	0.1%	0.3%	1.6%	0.1%	0.0%	0.0%	0.0%	5.5%	1	108
Wabaunsee	I-70	I-70 E OF KEENE RD, EXIT 342, 4 MI W OF SN CO LI	1R	70	9,816	3,313	15	438	53	5	90	2,358	48	257	42	2	3,306	16,503	I
CB1U73	RS-1071 (KEENE RD)		0.80	0.4%	59.5%	20.1%	0.1%	2.7%	0.3%	0.0%	0.5%	14.3%	0.3%	1.6%	0.3%	0.0%	20.0%	1	110
Wyandotte	US-73	K-7 S OF PARALLEL, IN KC	2U	256	15,988	4,364	2	233	143	19	148	349	10	2	3	3	913	21,522	I
EIAX55	C-2524 (PARALLEL PKWY)		0.96	1.2%	74.3%	20.3%	0.0%	1.1%	0.7%	0.1%	0.7%	1.6%	0.0%	0.0%	0.0%	0.0%	4.2%	1	112
Wyandotte	I-435	I-435 S OF I-70, IN KC	1U	307	42,250	13,777	40	1,344	790	83	376	2,865	52	522	31	2	6,104	62,437	I
EOMWJ5	I-70		0.91	0.5%	67.7%	22.1%	0.1%	2.2%	1.3%	0.1%	0.6%	4.6%	0.1%	0.8%	0.0%	0.0%	9.8%	1	114
Wyandotte	I-70	I-70 W OF I-435, IN KC	1U	159	37,132	11,729	55	1,317	390	40	316	4,169	101	328	57	115	6,886	55,905	I
EOMWJ7	I-435		0.88	0.3%	66.4%	21.0%	0.1%	2.4%	0.7%	0.1%	0.6%	7.5%	0.2%	0.6%	0.1%	0.2%	12.3%	1	116
Wyandotte	I-70	I-70 E OF TURNER DIAGONAL, EXIT 415, IN KC	1U	377	48,051	18,872	58	1,747	638	106	224	4,049	128	380	63	54	7,445	74,745	I
ETVWK3	C-2638 (TURNER DIAGONAL)		0.91	0.5%	64.3%	25.2%	0.1%	2.3%	0.9%	0.1%	0.3%	5.4%	0.2%	0.5%	0.1%	0.1%	10.0%	1	118
Wyandotte	C-2999 (18th ST)	18th ST N OF I-70, IN KC	4U	53	14,740	5,722	48	521	39	13	24	33	5	0	0	0	682	21,196	I
F07WC1	I-70		0.99	0.2%	69.5%	27.0%	0.2%	2.5%	0.2%	0.1%	0.1%	0.2%	0.0%	0.0%	0.0%	0.0%	3.2%	1	120
Wyandotte	I-70	I-70 W OF 18th ST, IN KC	1U	534	51,897	19,849	64	2,249	1,277	162	529	4,993	164	430	116	102	10,086	82,365	I
F07WC7	C-2999 (18th ST)		0.89	0.6%	63.0%	24.1%	0.1%	2.7%	1.6%	0.2%	0.6%	6.1%	0.2%	0.5%	0.1%	0.1%	12.2%	1	122

District 2

2012 Vehicle Classification Summary

Kansas Dept of Transportation

County	Route	LOCATION DESCRIPTION	FC	VEHICLE CLASSIFICATION CATEGORY													Truck Total	ADT Surveys	District Start Pg
				AF	1	2	3	4	5	6	7	8	9	10	11	12			
Chase	K-177	K-177 N OF MAIN ST, IN COTTONWOOD FALLS	5R	14	1,761	1,023	7	113	10	7	11	38	2	0	0	0	186	2,983	II
BAM8Z1	RS-92 (MAIN ST)		0.97	0.5%	59.0%	34.3%	0.2%	3.8%	0.3%	0.2%	0.4%	1.3%	0.1%	0.0%	0.0%	0.0%	6.2%	1	6
Clay	US-24	US-24 W OF RS-1408, 5 MI W OF CLAY CENTER	3R	9	847	516	1	14	28	1	29	134	4	0	1	0	211	1,582	II
9VE3M7	RS-1408 (HACKBERRY)		0.86	0.5%	53.5%	32.6%	0.0%	0.9%	1.8%	0.1%	1.8%	8.5%	0.3%	0.0%	0.0%	0.0%	13.3%	1	8
Dickinson	K-18	K-18 W OF K-15 (W JCT)	4R	18	413	244	0	7	16	1	66	86	4	2	0	1	180	855	II
9Y7SY7	K-15		0.80	2.1%	48.3%	28.6%	0.0%	0.8%	1.8%	0.1%	7.7%	10.0%	0.5%	0.2%	0.0%	0.1%	21.1%	1	10
Dickinson	K-15	K-15 N OF K-18 (E JCT)	4R	11	520	323	0	10	13	1	23	163	14	1	0	1	225	1,078	II
A3GSZ1	K-18		0.78	1.0%	48.2%	29.9%	0.0%	0.9%	1.2%	0.1%	2.1%	15.1%	1.3%	0.1%	0.0%	0.1%	20.9%	1	12
Dickinson	K-43	K-43 S OF RS-1816, AT DETROIT	5R	52	1,120	515	0	28	10	2	12	13	5	0	0	1	69	1,755	II
A47PZ5	RS-1816 (OLD US-40)		0.97	3.0%	63.8%	29.3%	0.0%	1.6%	0.5%	0.1%	0.7%	0.7%	0.3%	0.0%	0.0%	0.0%	3.9%	1	14
Dickinson	K-43	K-43 N OF RS-191, 7 MI S OF ENTERPRISE	5R	5	102	73	0	7	1	0	3	8	1	1	0	1	20	199	II
A51LT1	K-43		0.91	2.3%	51.1%	36.5%	0.0%	3.5%	0.3%	0.0%	1.5%	3.8%	0.5%	0.3%	0.0%	0.3%	10.1%	1	16
Geary	K-18	K-18 E OF MUNSON RD, 1.5 MI W OF US-77	4R	19	725	410	0	8	19	2	10	26	1	1	0	3	67	1,220	II
AJASZ3	MUNSON RD		0.95	1.6%	59.4%	33.6%	0.0%	0.6%	1.5%	0.2%	0.8%	2.1%	0.0%	0.0%	0.0%	0.2%	5.5%	1	18
Geary	US-77	US-77 S OF K-157, 8 MI S OF JUNCTION CITY	3R	19	1,550	615	0	39	21	2	23	197	14	1	1	3	299	2,483	II
ANJOJ5	K-157		0.87	0.8%	62.4%	24.8%	0.0%	1.6%	0.8%	0.1%	0.9%	7.9%	0.5%	0.0%	0.0%	0.1%	12.0%	1	20
Geary	US-40 B	US-40B E OF K-57, IN JUNCTION CITY	3U	80	4,240	1,449	8	194	10	2	13	40	0	1	0	0	268	6,037	II
AP1SY3	K-57		0.99	1.3%	70.2%	24.0%	0.1%	3.2%	0.2%	0.0%	0.2%	0.7%	0.0%	0.0%	0.0%	0.0%	4.4%	1	22
Geary	K-18	K-18 N OF I-70, NE OF JUNCTION CITY	3R	95	8,868	2,846	4	102	61	13	100	235	12	12	3	9	549	12,357	II
AVATX1	I-70		0.96	0.8%	71.8%	23.0%	0.0%	0.8%	0.5%	0.1%	0.8%	1.9%	0.1%	0.1%	0.0%	0.1%	4.4%	1	24
Jewell	US-36	US-36 E OF 170th RD (RS-2150), E OF MANKATO	3R	7	884	480	0	20	30	5	28	249	11	7	0	2	351	1,721	II
7ZBFZ3	RS-2150 (170th RD)		0.79	0.4%	51.4%	27.9%	0.0%	1.1%	1.7%	0.3%	1.6%	14.5%	0.6%	0.4%	0.0%	0.1%	20.4%	1	26
Jewell	K-28	K-28 W OF JCT K-28 / K-148, E OF JEWELL	5R	1	129	97	0	2	7	1	6	12	0	1	0	2	30	257	II
89ZCE7	K-28		0.88	0.4%	50.2%	37.7%	0.0%	0.8%	2.5%	0.4%	2.3%	4.5%	0.0%	0.4%	0.0%	0.8%	11.7%	1	28
Lincoln	K-18	K-18 W OF K-14, AT LINCOLN	4R	8	463	374	0	10	13	1	11	30	8	3	2	9	85	929	II
82ATI7	K-14		0.90	0.9%	49.8%	40.3%	0.0%	1.0%	1.4%	0.1%	1.1%	3.2%	0.8%	0.3%	0.2%	0.9%	9.1%	1	30
McPherson	K-153	K-153 S OF US-56, IN McPHERSON	4U	62	2,554	1,672	6	43	35	6	59	307	10	9	2	5	480	4,767	II
8ZV8L5	US-56		0.89	1.3%	53.6%	35.1%	0.1%	0.9%	0.7%	0.1%	1.2%	6.4%	0.2%	0.2%	0.0%	0.1%	10.1%	1	32
McPherson	US-81 B	US-81B N OF K-61, IN S McPHERSON	3U	43	1,764	793	1	23	25	3	9	217	2	1	0	1	280	2,880	II
9177J1	K-61		0.89	1.5%	61.3%	27.5%	0.0%	0.8%	0.9%	0.1%	0.3%	7.5%	0.1%	0.0%	0.0%	0.0%	9.7%	1	34

District 2

2012 Vehicle Classification Summary

Kansas Dept of Transportation

County	Route	LOCATION DESCRIPTION	FC	VEHICLE CLASSIFICATION CATEGORY													Truck Total	ADT Surveys	District Start Pg
				AF	1	2	3	4	5	6	7	8	9	10	11	12			
Morris	K-149	K-149 N OF US-56, 3 MI E OF DELAVAN	5R	1	103	80	0	2	3	1	2	7	1	1	0	0	14	197	II
AVMHG1	US-56		0.93	0.5%	52.0%	40.4%	0.0%	0.8%	1.3%	0.5%	0.8%	3.3%	0.3%	0.3%	0.0%	0.0%	7.1%	1	36
Morris	US-56	US-56 W OF K-149, 3 MI E OF DELAVAN	4R	2	359	222	0	20	5	8	13	65	5	2	1	1	117	700	II
AVMHG7	K-149		0.84	0.3%	51.3%	31.7%	0.0%	2.8%	0.7%	1.1%	1.8%	9.2%	0.7%	0.2%	0.1%	0.1%	16.7%	1	38
Morris	K-4	K-4 N OF K-149, 3 MI S OF WHITE CITY	5R	5	215	162	0	6	2	1	3	10	0	0	0	1	21	402	II
AVPK41	K-149		0.95	1.1%	53.5%	40.3%	0.0%	1.4%	0.4%	0.1%	0.6%	2.5%	0.0%	0.0%	0.0%	0.1%	5.1%	1	40
Morris	K-4	K-4 W OF K-149, 3 MI S OF WHITE CITY	5R	1	92	93	0	3	1	1	1	4	0	0	0	1	8	194	II
AVPK47	K-4		0.96	0.5%	47.4%	47.9%	0.0%	1.3%	0.3%	0.3%	0.3%	1.8%	0.0%	0.0%	0.0%	0.3%	4.1%	1	42
Morris	K-177	K-177 S OF K AVE, 4 MI N OF COUNCIL GROVE	4R	9	1,267	529	0	19	11	2	21	72	4	3	0	2	132	1,937	II
BD1KN5	K AVE		0.93	0.5%	65.4%	27.3%	0.0%	1.0%	0.5%	0.1%	1.1%	3.7%	0.2%	0.1%	0.0%	0.1%	6.8%	1	44
Ottawa	K-18	K-18 W OF 140th RD, 1.5 MI W OF US-81	4R	8	789	363	3	37	13	2	6	72	3	0	0	0	135	1,295	II
90VSF7	140th RD		0.91	0.6%	60.9%	28.0%	0.2%	2.8%	1.0%	0.2%	0.5%	5.6%	0.2%	0.0%	0.0%	0.0%	10.4%	1	46
Republic	US-36	US-36 W OF K-199, N OF CORTLAND	3R	6	388	318	1	11	18	2	14	216	7	5	0	1	274	985	II
8KKGE7	K-199		0.73	0.6%	39.3%	32.3%	0.1%	1.1%	1.8%	0.2%	1.4%	21.9%	0.7%	0.5%	0.0%	0.1%	27.8%	1	48
Republic	US-36	US-36 E OF CO RD O, 1 MI NE OF SCANDIA	3R	19	916	624	0	12	26	2	35	263	13	5	2	3	359	1,918	II
8U2GT3	CO ROAD O		0.80	1.0%	47.7%	32.5%	0.0%	0.6%	1.3%	0.1%	1.8%	13.7%	0.7%	0.3%	0.1%	0.1%	18.7%	1	50
Republic	US-81	US-81 S OF CO RD Q, 2.5 MI S OF BELLEVILLE	2R	20	2,528	1,307	34	203	29	7	152	1,034	48	11	6	30	1,555	5,410	II
91TFY5	COUNTY RD Q		0.74	0.4%	46.7%	24.2%	0.6%	3.8%	0.5%	0.1%	2.8%	19.1%	0.9%	0.2%	0.1%	0.6%	28.7%	1	52
Republic	US-81	US-81 S OF RS-334, 5 MI S OF KS/NE BORDER	4R	27	1,103	688	2	34	55	6	74	1,249	57	23	12	6	1,516	3,334	II
94EKE5	RS-334 (FIR RD)		0.61	0.8%	33.1%	20.6%	0.1%	1.0%	1.6%	0.2%	2.2%	37.5%	1.7%	0.7%	0.4%	0.2%	45.5%	1	54
Saline	K-140	K-140 W OF BROOKVILLE RD	4R	3	729	375	1	15	13	0	19	71	13	5	1	2	138	1,245	II
8M7KY7	RS-447 (BROOKVILLE RD)		0.88	0.2%	58.6%	30.1%	0.0%	1.2%	1.0%	0.0%	1.5%	5.7%	1.0%	0.4%	0.0%	0.1%	11.1%	1	56
Saline	K-4	K-4 S OF K-104, 4.5 MI S OF SALINA	4R	5	938	499	0	12	20	1	10	38	2	3	0	0	83	1,524	II
957J25	K-104		0.95	0.3%	61.5%	32.7%	0.0%	0.8%	1.3%	0.0%	0.6%	2.5%	0.1%	0.2%	0.0%	0.0%	5.4%	1	58
Saline	C-4816 (CRAWFORD)	CRAWFORD W OF FRONT, IN SALINA	3U	85	11,009	4,508	12	319	20	11	22	16	0	0	0	0	399	16,001	II
95MMM7	C-4833 (FRONT)		1.00	0.5%	68.8%	28.2%	0.1%	2.0%	0.1%	0.1%	0.1%	0.1%	0.0%	0.0%	0.0%	0.0%	2.5%	1	60
Washington	US-36	US-36 E OF RS-125, 4 MI E OF WASHINGTON	3R	18	998	529	1	19	37	3	28	401	27	2	0	1	518	2,062	II
ADTGX3	RS-125 (UPLAND RD)		0.74	0.8%	48.4%	25.7%	0.0%	0.9%	1.8%	0.1%	1.4%	19.4%	1.3%	0.1%	0.0%	0.0%	25.1%	1	62

District 3

2012 Vehicle Classification Summary

Kansas Dept of Transportation

County	Route	LOCATION DESCRIPTION	FC	VEHICLE CLASSIFICATION CATEGORY													Truck Total	ADT Surveys	District Start Pg
				1	2	3	4	5	6	7	8	9	10	11	12	13			
Site Id	Cross- Route		AF																
Gove	K-23	K-23 S OF I-70, EXIT 93, S OF GRAINFIELD	4R	7	267	285	0	14	72	3	15	184	17	1	1	2	308	866	III
3FGW25	I-70		0.70	0.8%	30.8%	32.9%	0.0%	1.6%	8.3%	0.3%	1.7%	21.3%	1.9%	0.1%	0.1%	0.2%	35.5%	1	6
Gove	I-70	I-70 W OF K-23, EXIT 93, SW OF GRAINFIELD	1R	47	2,549	1,296	19	74	91	14	153	2,159	39	232	87	10	2,876	6,768	III
3FGW27	K-23		0.62	0.7%	37.7%	19.2%	0.3%	1.1%	1.3%	0.2%	2.3%	31.9%	0.6%	3.4%	1.3%	0.2%	42.5%	1	8
Logan	US-83	US-83 S OF RS-1672, 5 MI S OF US-40	3R	7	560	364	8	100	24	7	30	845	81	1	3	3	1,100	2,031	III
2OPUF5	RS-1672 (ZEST RD)		0.58	0.3%	27.6%	17.9%	0.4%	4.9%	1.2%	0.3%	1.5%	41.6%	4.0%	0.0%	0.1%	0.1%	54.1%	1	10
Norton	US-36	US-36 W OF MCS-6907, 8 MI W OF NORTON	4R	17	430	375	1	14	16	3	24	153	14	2	1	1	225	1,047	III
4B8HU7	MCS-6907 (RD W-9)		0.78	1.6%	41.1%	35.8%	0.0%	1.3%	1.5%	0.2%	2.3%	14.6%	1.3%	0.1%	0.0%	0.0%	21.5%	1	12
Norton	K-383	K-383 E OF LOCAL RD, AT DELLVALE	3R	19	322	254	0	13	21	3	26	259	38	3	2	8	371	965	III
4CTG53	LOCAL RD 2 MI W OF RS-281		0.65	1.9%	33.4%	26.3%	0.0%	1.3%	2.2%	0.3%	2.6%	26.8%	3.9%	0.3%	0.2%	0.8%	38.4%	1	14
Norton	K-9	K-9 W OF RS-281, AT LENORA	5R	2	73	142	1	21	10	1	4	24	1	0	0	0	61	277	III
4EQBD7	RS-281		0.85	0.7%	26.4%	51.1%	0.4%	7.4%	3.6%	0.4%	1.3%	8.5%	0.4%	0.0%	0.0%	0.0%	21.8%	1	16
Phillips	US-183	US-183 N OF PLAINS RD, 2 MI N OF US-36 / 183 JCT	3R	13	502	347	2	10	20	2	13	244	30	2	4	5	329	1,191	III
5QTG71	PLAINS RD		0.72	1.1%	42.1%	29.1%	0.2%	0.8%	1.6%	0.2%	1.0%	20.4%	2.5%	0.2%	0.3%	0.4%	27.6%	1	18
Phillips	US-183	US-183 S OF SANTA FE, S OF PHILLIPSBURG	3R	30	1,326	825	2	31	36	5	42	402	27	3	5	10	561	2,741	III
5S5EU5	SANTA FE		0.78	1.1%	48.4%	30.1%	0.1%	1.1%	1.3%	0.2%	1.5%	14.7%	1.0%	0.1%	0.2%	0.3%	20.4%	1	20
Phillips	MCS-7409 (E 300 RD)	MCS-7409 N OF K-9, 2 MI E OF GLADE	6R	0	12	25	0	1	3	0	0	4	0	0	1	1	9	45	III
5V2D71	K-9		0.81	0.0%	25.6%	55.6%	0.0%	1.1%	5.6%	0.0%	0.0%	8.9%	0.0%	0.0%	2.2%	1.1%	18.9%	1	22
Rooks	K-18	K-18 E OF MCS-8205, W OF PLAINVILLE	4R	5	589	630	0	24	39	5	18	50	5	2	0	2	143	1,366	III
5NJZC3	MCS-8205 (14 RD)		0.91	0.4%	43.1%	46.1%	0.0%	1.8%	2.8%	0.4%	1.3%	3.7%	0.4%	0.1%	0.0%	0.1%	10.5%	1	24
Rooks	US-183	US-183 N OF K-18, IN PLAINVILLE	3R	21	1,677	1,192	4	32	46	5	39	320	22	6	5	6	482	3,372	III
5S7ZF1	K-18		0.84	0.6%	49.7%	35.3%	0.1%	0.9%	1.4%	0.1%	1.2%	9.5%	0.7%	0.2%	0.1%	0.2%	14.3%	1	26
Russell	I-70	I-70 E OF US-281, RUSSELL EXIT 184	1R	106	6,081	2,006	11	130	78	36	244	2,223	29	280	87	12	3,126	11,319	III
6NMNQ3	US-281		0.72	0.9%	53.7%	17.7%	0.1%	1.1%	0.7%	0.3%	2.2%	19.6%	0.3%	2.5%	0.8%	0.1%	27.6%	1	28
Russell	I-70	I-70 W OF US-281, EXIT 184	1R	140	6,616	2,270	16	144	100	25	321	2,337	37	270	75	16	3,340	12,365	III
6NMNQ7	US-281		0.73	1.1%	53.5%	18.4%	0.1%	1.2%	0.8%	0.2%	2.6%	18.9%	0.3%	2.2%	0.6%	0.1%	27.0%	1	30
Russell	US-281	US-281 S OF RS-1896, 13.5 MI N OF I-70	4R	13	330	239	1	10	40	1	15	155	22	2	3	6	252	833	III
6NVTU5	RS-1896 (AMHERST RD)		0.71	1.5%	39.6%	28.7%	0.1%	1.1%	4.7%	0.1%	1.8%	18.5%	2.6%	0.2%	0.3%	0.7%	30.3%	1	32
Russell	US-281	US-281 E OF US-281 / K-18 (W JCT)	4R	15	333	210	1	14	29	1	25	136	19	3	1	1	227	784	III
6NYVM3	US-281		0.73	1.8%	42.5%	26.7%	0.1%	1.7%	3.6%	0.1%	3.1%	17.3%	2.4%	0.4%	0.1%	0.1%	29.0%	1	34

District 3

2012 Vehicle Classification Summary

Kansas Dept of Transportation

County	Route	LOCATION	FC	VEHICLE CLASSIFICATION CATEGORY													Truck	ADT	District
Site Id	Cross- Route	DESCRIPTION	AF	1	2	3	4	5	6	7	8	9	10	11	12	13	Total	Surveys	Start Pg
Russell	K-18	K-18 W OF US-281 / K-18 (W JCT)	4R	8	203	185	0	12	33	0	23	86	14	4	1	6	176	570	III
6NYVM7	US-281		0.73	1.3%	35.5%	32.4%	0.0%	2.0%	5.7%	0.0%	3.9%	15.0%	2.5%	0.6%	0.1%	1.0%	30.8%	1	36
Sherman	I-70	I-70 E OF K-267 & RS-288, E OF KANORADO EXIT 1	1R	105	6,081	1,275	38	95	52	26	111	1,810	48	137	90	74	2,481	9,943	III
0DT453	K-267		0.74	1.1%	61.2%	12.8%	0.4%	1.0%	0.5%	0.3%	1.1%	18.2%	0.5%	1.4%	0.9%	0.7%	24.9%	1	38
Smith	US-36	US-36 W OF K-248, IN KENSINGTON	3R	33	891	635	2	34	32	5	33	250	12	2	1	3	371	1,930	III
6BWFO7	K-248		0.81	1.7%	46.2%	32.9%	0.1%	1.7%	1.7%	0.3%	1.7%	12.9%	0.6%	0.1%	0.0%	0.2%	19.2%	1	40
Thomas	US-24	US-24 E OF CO RD 27 (RS-647), 2 MI W OF US-83	4R	11	904	731	3	27	49	4	37	252	25	1	0	2	398	2,043	III
2LN543	RS-647 (CO RD 27)		0.80	0.5%	44.2%	35.8%	0.1%	1.3%	2.4%	0.2%	1.8%	12.3%	1.2%	0.0%	0.0%	0.1%	19.5%	1	42
Thomas	I-70	I-70 NW OF US-83, EXIT 70	1R	71	2,821	1,378	21	74	103	20	146	2,296	45	240	99	9	3,051	7,321	III
2NPY38	US-83		0.63	1.0%	38.5%	18.8%	0.3%	1.0%	1.4%	0.3%	2.0%	31.4%	0.6%	3.3%	1.4%	0.1%	41.7%	1	44
Thomas	US-83	US-83 N OF US-24, 9 MI E OF COLBY	3R	13	704	532	2	20	56	5	28	635	78	5	1	3	831	2,080	III
2OB531	US-24		0.64	0.6%	33.9%	25.6%	0.1%	1.0%	2.7%	0.2%	1.3%	30.5%	3.8%	0.2%	0.0%	0.1%	40.0%	1	46
Thomas	US-24	US-24 E OF US-83, 9 MI E OF COLBY	4R	5	378	327	2	13	15	1	23	123	8	1	0	2	186	895	III
2OB533	US-83		0.79	0.5%	42.2%	36.5%	0.2%	1.4%	1.6%	0.1%	2.5%	13.7%	0.9%	0.1%	0.0%	0.2%	20.8%	1	48
Thomas	US-83	US-83 S OF US-24, 9 MI E OF COLBY	3R	10	236	289	2	9	27	2	15	610	95	4	1	3	765	1,299	III
2OB535	US-24		0.53	0.8%	18.1%	22.2%	0.1%	0.7%	2.1%	0.2%	1.1%	46.9%	7.3%	0.3%	0.1%	0.2%	58.9%	1	50
Trego	I-70	I-70 E OF US-283, WAKEENEY EXIT 127	1R	80	3,435	2,051	26	372	32	12	89	2,256	70	187	86	3	3,131	8,696	III
4LGSU3	US-283		0.68	0.9%	39.5%	23.6%	0.3%	4.3%	0.4%	0.1%	1.0%	25.9%	0.8%	2.1%	1.0%	0.0%	36.0%	1	52

District 4

2012 Vehicle Classification Summary

Kansas Dept of Transportation

County Site Id	Route Cross- Route	LOCATION DESCRIPTION	FC AF	VEHICLE CLASSIFICATION CATEGORY													Truck Total	ADT Surveys	District Start Pg
				1	2	3	4	5	6	7	8	9	10	11	12	13			
Allen	US-54	US-54 E OF 800th ST, 3 MI W OF IOLA	3R	29	1,552	912	1	28	25	7	48	271	8	2	1	2	390	2,884	IV
DHRVP3	800th ST		0.85	1.0%	53.8%	31.6%	0.0%	1.0%	0.8%	0.2%	1.6%	9.4%	0.3%	0.1%	0.0%	0.1%	13.5%	1	6
Allen	US-59	US-59 N OF US-54, AT MORAN	4R	11	627	422	0	12	14	1	16	107	3	41	3	4	201	1,260	IV
E36VV1	US-54		0.83	0.8%	49.7%	33.5%	0.0%	1.0%	1.1%	0.1%	1.3%	8.5%	0.2%	3.2%	0.2%	0.3%	15.9%	1	8
Allen	US-59	US-59 S OF RS-1151, 3 MI S OF US-54	4R	9	444	319	0	11	14	1	14	81	3	39	2	4	169	941	IV
E39UK5	RS-1151 (MINNESOTA)		0.81	1.0%	47.2%	33.9%	0.0%	1.2%	1.5%	0.1%	1.5%	8.6%	0.3%	4.2%	0.2%	0.4%	18.0%	1	10
Anderson	US-169	US-169 NE OF K-58, N OF COLONY	3R	19	1,469	747	5	45	44	5	50	768	16	66	11	4	1,014	3,249	IV
DNV0S2	K-58		0.70	0.6%	45.2%	23.0%	0.2%	1.4%	1.3%	0.1%	1.5%	23.6%	0.5%	2.0%	0.3%	0.1%	31.2%	1	12
Bourbon	K-65	K-65 E OF K-3	5R	1	57	51	0	1	1	1	3	4	2	1	0	0	10	119	IV
EB0Y73	K-3		0.90	0.8%	47.7%	43.0%	0.0%	0.4%	0.4%	0.4%	2.5%	3.0%	1.3%	0.4%	0.0%	0.0%	8.4%	1	14
Bourbon	K-7	K-7 S OF K-31	5R	5	48	45	0	4	1	0	1	2	0	0	0	0	7	105	IV
ES6Z15	K-31		0.97	4.8%	45.5%	43.1%	0.0%	3.3%	1.0%	0.0%	1.0%	1.4%	0.0%	0.0%	0.0%	0.0%	6.7%	1	16
Bourbon	US-69	US-69 N OF K-7 (S JCT), S OF FT SCOTT	3R	30	4,137	1,655	2	82	56	7	104	789	8	68	13	4	1,134	6,956	IV
F1IRM1	K-7		0.82	0.4%	59.5%	23.8%	0.0%	1.2%	0.8%	0.1%	1.5%	11.3%	0.1%	1.0%	0.2%	0.1%	16.3%	1	18
Chautauqua	US-166	US-166 W OF MCS-1017, AT NIOTAZE	3R	13	1,155	783	1	29	25	8	35	355	10	2	0	3	466	2,417	IV
CF0577	MCS-1017		0.80	0.5%	47.8%	32.4%	0.0%	1.2%	1.0%	0.3%	1.4%	14.7%	0.4%	0.1%	0.0%	0.1%	19.3%	1	20
Cherokee	US-166	US-166 W OF RS-2106, 4.25 MI E OF W CO LINE	3R	17	1,327	641	2	26	19	4	61	379	4	2	1	1	496	2,481	IV
EII4Q7	RS-2106		0.79	0.7%	53.5%	25.8%	0.1%	1.0%	0.7%	0.1%	2.4%	15.3%	0.2%	0.1%	0.0%	0.0%	20.0%	1	22
Cherokee	K-7	K-7 S OF K-102, W OF SCAMMON	4R	8	1,073	634	2	25	71	2	48	300	4	3	0	2	455	2,170	IV
ETRCI5	K-102		0.80	0.4%	49.5%	29.2%	0.1%	1.2%	3.2%	0.1%	2.2%	13.8%	0.2%	0.1%	0.0%	0.1%	21.0%	1	24
Cherokee	US-69	US-69 N OF US-166, W OF BAXTER SPRINGS	4R	33	1,316	666	1	29	69	4	58	384	12	3	0	3	562	2,576	IV
EUL4V1	US-166		0.78	1.3%	51.1%	25.9%	0.0%	1.1%	2.7%	0.2%	2.3%	14.9%	0.5%	0.1%	0.0%	0.1%	21.8%	1	26
Crawford	US-69 B	BROADWAY N OF EUCLID, IN PITTSBURG	3U	105	5,825	2,393	5	195	21	9	10	28	1	0	0	0	268	8,590	IV
F2RGG1	EUCLID		0.99	1.2%	67.8%	27.9%	0.1%	2.3%	0.2%	0.1%	0.1%	0.3%	0.0%	0.0%	0.0%	0.0%	3.1%	1	28
Elk	US-160	US-160 E OF K-99 (E JCT), W OF ELK FALLS	4R	0	342	228	0	8	3	0	3	19	1	1	0	2	35	604	IV
BVFEF3	K-99		0.94	0.0%	56.6%	37.7%	0.0%	1.3%	0.5%	0.0%	0.4%	3.1%	0.1%	0.1%	0.0%	0.2%	5.7%	1	30
Franklin	US-59	US-59 S OF JACKSON, 3 MI S OF OTTAWA	3R	4	3,663	1,282	2	40	37	6	63	323	2	5	2	2	481	5,429	IV
DUDF05	JACKSON RD		0.90	0.1%	67.5%	23.6%	0.0%	0.7%	0.7%	0.1%	1.2%	6.0%	0.0%	0.1%	0.0%	0.0%	8.9%	1	32
Franklin	K-68	K-68 E OF DAVIS AVE, E OF OTTAWA	4R	23	5,484	2,019	8	241	67	4	45	148	10	4	0	0	525	8,050	IV
DVDHC3	C-4323 (DAVIS)		0.96	0.3%	68.1%	25.1%	0.1%	3.0%	0.8%	0.0%	0.6%	1.8%	0.1%	0.0%	0.0%	0.0%	6.5%	1	34

District 4

2012 Vehicle Classification Summary

Kansas Dept of Transportation

County	Route	LOCATION DESCRIPTION	FC	VEHICLE CLASSIFICATION CATEGORY													Truck Total	ADT Surveys	District Start Pg
				1	2	3	4	5	6	7	8	9	10	11	12	13			
Site Id	Cross- Route		AF																
Franklin	RS-266 (VERMONT RD)	RS-266 S OF K-68, 5 MI N OF RANTOUL	5R	1	574	301	0	11	11	2	5	12	0	0	0	1	43	919	IV
E64HG5	K-68		0.96	0.1%	62.4%	32.8%	0.0%	1.2%	1.2%	0.2%	0.5%	1.3%	0.0%	0.0%	0.0%	0.1%	4.7%	1	36
Franklin	RS-266 (VERMONT RD)	RS-266 N OF RS-259, 3.5 MI S OF RANTOUL	5R	0	422	265	0	10	6	1	3	8	0	0	0	2	30	716	IV
E6AF71	RS-259 (JOHN BROWN RD)		0.97	0.0%	58.9%	36.9%	0.0%	1.3%	0.8%	0.2%	0.4%	1.1%	0.0%	0.0%	0.0%	0.3%	4.1%	1	38
Greenwood	US-54	US-54 E OF K-99, W JCT	3R	3	1,083	678	2	24	32	8	31	223	5	5	0	2	331	2,095	IV
BXUS23	K-99		0.84	0.2%	51.7%	32.3%	0.1%	1.1%	1.5%	0.4%	1.5%	10.6%	0.2%	0.2%	0.0%	0.1%	15.8%	1	40
Greenwood	K-99	K-99 S OF US-54, W JCT	4R	1	381	283	1	12	12	3	9	47	2	2	1	2	88	753	IV
BXUS25	US-54		0.88	0.1%	50.6%	37.5%	0.1%	1.5%	1.5%	0.4%	1.1%	6.2%	0.3%	0.2%	0.1%	0.3%	11.7%	1	42
Greenwood	US-54	US-54 W OF K-99, W JCT, E OF EUREKA	3R	10	1,285	817	1	35	42	7	25	236	7	6	0	2	359	2,470	IV
BXUS27	K-99		0.85	0.4%	52.0%	33.1%	0.0%	1.4%	1.7%	0.3%	1.0%	9.6%	0.3%	0.2%	0.0%	0.1%	14.5%	1	44
Labette	US-160	US-160 E OF K-101, W OF ALTAMONT	4R	21	1,016	549	0	23	84	2	19	79	2	0	0	1	209	1,795	IV
DRC9E3	K-101		0.91	1.2%	56.6%	30.6%	0.0%	1.3%	4.7%	0.1%	1.1%	4.4%	0.1%	0.0%	0.0%	0.1%	11.6%	1	46
Labette	K-101	K-101 S OF US-160, W OF ALTAMONT	4R	4	397	214	0	13	46	0	7	23	1	1	0	1	92	707	IV
DRC9E5	US-160		0.91	0.6%	56.1%	30.3%	0.0%	1.8%	6.5%	0.0%	1.0%	3.3%	0.1%	0.1%	0.0%	0.1%	13.0%	1	48
Labette	US-59	US-59 N OF US-160, 1 MI E OF ALTAMONT	4R	29	2,149	864	1	35	20	4	27	173	6	29	2	2	296	3,338	IV
DY09I1	US-160		0.90	0.9%	64.4%	25.9%	0.0%	1.0%	0.6%	0.1%	0.8%	5.2%	0.2%	0.9%	0.0%	0.0%	8.9%	1	50
Labette	US-166	US-166 W OF K-134, S OF BARTLETT	3R	22	959	564	3	36	27	1	49	290	4	1	1	1	410	1,955	IV
E2L527	K-134		0.79	1.1%	49.0%	28.9%	0.2%	1.8%	1.4%	0.0%	2.5%	14.8%	0.2%	0.1%	0.0%	0.1%	21.0%	1	52
Linn	US-69	US-69 S OF K-52 (S JCT), S OF PLEASANTON	2R	40	2,715	1,048	4	61	38	6	85	893	11	67	14	2	1,181	4,983	IV
EZP355	K-52		0.76	0.8%	54.5%	21.0%	0.1%	1.2%	0.8%	0.1%	1.7%	17.9%	0.2%	1.3%	0.3%	0.0%	23.7%	1	54
Miami	US-169	US-169 SW OF K-279, E OF OSAWATOMIE	2R	44	6,239	2,761	20	219	40	10	34	633	15	71	17	1	1,056	10,099	IV
EIJDS6	K-279		0.89	0.4%	61.8%	27.3%	0.2%	2.2%	0.4%	0.1%	0.3%	6.3%	0.1%	0.7%	0.2%	0.0%	10.5%	1	56
Miami	US-69	US-69 S OF K-68, W OF LOUISBURG	2R	110	5,837	2,327	3	84	69	9	166	978	25	76	13	3	1,424	9,698	IV
EZGHQ5	K-68		0.84	1.1%	60.2%	24.0%	0.0%	0.9%	0.7%	0.1%	1.7%	10.1%	0.3%	0.8%	0.1%	0.0%	14.7%	1	58
Montgomery	US-75	US-75 S OF US-400, N OF INDEPENDENCE	2R	34	2,754	1,235	1	32	33	4	42	275	6	2	0	5	398	4,421	IV
D1XEA5	US-400		0.90	0.8%	62.3%	27.9%	0.0%	0.7%	0.7%	0.1%	1.0%	6.2%	0.1%	0.0%	0.0%	0.1%	9.0%	1	60
Neosho	K-39	K-39 W OF PLUMMER AVE, IN CHANUTE	3U	16	1,698	988	6	173	50	4	32	276	4	1	0	0	543	3,244	IV
DHUOK7	C-403 (PLUMMER)		0.87	0.5%	52.3%	30.5%	0.2%	5.3%	1.5%	0.1%	1.0%	8.5%	0.1%	0.0%	0.0%	0.0%	16.7%	1	62
Wilson	K-39	K-39 W OF US-75 (W JCT), 1 MI S OF BUFFALO	4R	3	391	241	0	9	17	1	55	193	2	1	0	1	280	915	IV
D2OOH7	US-75		0.72	0.4%	42.7%	26.3%	0.0%	1.0%	1.9%	0.1%	6.0%	21.1%	0.2%	0.1%	0.0%	0.1%	30.6%	1	64

District 4

2012 Vehicle Classification Summary

Kansas Dept of Transportation

County	Route	LOCATION	FC	VEHICLE CLASSIFICATION CATEGORY													Truck	ADT	District
Site Id	Cross- Route	DESCRIPTION	AF	1	2	3	4	5	6	7	8	9	10	11	12	13	Total	Surveys	Start Pg
Wilson	US-75	US-75 S OF K-39 (E JCT), 11 MI N OF ALTOONA	3R	6	541	300	0	20	20	3	20	200	6	1	0	2	271	1,118	IV
D4LOG5	K-39		0.76	0.6%	48.4%	26.8%	0.0%	1.8%	1.8%	0.3%	1.7%	17.8%	0.5%	0.1%	0.0%	0.2%	24.2%	1	66
Woodson	US-75	US-75 N OF US-54, YATES CENTER	3R	17	1,189	766	0	32	37	7	38	456	12	7	1	3	594	2,566	IV
CXOU81	US-54		0.76	0.7%	46.3%	29.9%	0.0%	1.3%	1.4%	0.3%	1.5%	17.8%	0.5%	0.3%	0.0%	0.1%	23.1%	1	68
Woodson	US-75	US-75 S OF 40th RD, 3.6 MI N OF S CO LINE	3R	17	743	421	1	20	28	5	28	422	12	7	1	2	523	1,703	IV
D0CR35	40th RD		0.70	1.0%	43.6%	24.7%	0.0%	1.1%	1.6%	0.3%	1.6%	24.7%	0.7%	0.4%	0.0%	0.1%	30.7%	1	70

District 5

2012 Vehicle Classification Summary

Kansas Dept of Transportation

County	Route	LOCATION DESCRIPTION	FC	VEHICLE CLASSIFICATION CATEGORY													Truck Total	ADT Surveys	District Start Pg	
				1	2	3	4	5	6	7	8	9	10	11	12	13				
Site Id	Cross- Route		AF																	
Barber	US-160	US-160 E OF TAMARISK RD, 4 MI W OF US-281	4R	10	147	219	4	75	41	16	19	137	38	2	0	0	330	705	V	
6ZXB33	TAMARISK RD		0.68	1.4%	20.8%	31.0%	0.5%	10.6%	5.7%	2.3%	2.7%	19.4%	5.4%	0.2%	0.0%	0.0%	46.8%	1	6	
Barton	US-56	US-56 SW OF RS-41, SW OF GREAT BEND	3R	49	2,337	1,403	2	39	60	9	63	698	35	13	3	3	922	4,710	V	
6KY6W6	RS-41		0.79	1.0%	49.6%	29.8%	0.0%	0.8%	1.3%	0.2%	1.3%	14.8%	0.7%	0.3%	0.1%	0.1%	19.6%	1	8	
Barton	US-281	US-281 NW OF RS-1936, N OF GREAT BEND	4R	55	2,015	1,187	2	46	52	7	38	193	17	4	0	4	359	3,616	V	
6TG9R8	RS-1936 (NE 30 RD)		0.90	1.5%	55.7%	32.8%	0.0%	1.3%	1.4%	0.2%	1.0%	5.3%	0.5%	0.1%	0.0%	0.1%	9.9%	1	10	
Barton	K-156	K-156 NE OF RS-980, 2.25 MI NE OF US-56	3R	31	1,554	821	2	40	61	5	71	497	29	17	6	3	728	3,133	V	
70Y9Q2	RS-980 (NE 30 RD)		0.77	1.0%	49.6%	26.2%	0.0%	1.3%	1.9%	0.2%	2.3%	15.8%	0.9%	0.5%	0.2%	0.1%	23.2%	1	12	
Butler	K-254	K-254 E OF SW INDUSTRIAL RD, 0.4 MI W OF I-35 JCT	2R	119	9,165	4,030	12	352	126	23	48	874	18	7	0	2	1,461	14,775	V	
AKCRT3	SW INDUSTRIAL RD		0.91	0.8%	62.0%	27.3%	0.1%	2.4%	0.8%	0.2%	0.3%	5.9%	0.1%	0.0%	0.0%	0.0%	9.9%	1	14	
Harvey	US-50	US-50 W OF RS-307, N OF HALSTEAD	3R	29	2,025	886	6	55	48	10	81	1,024	44	23	9	3	1,302	4,241	V	
9C3Y57	RS-307 (HALSTEAD RD)		0.70	0.7%	47.7%	20.9%	0.1%	1.3%	1.1%	0.2%	1.9%	24.1%	1.0%	0.5%	0.2%	0.1%	30.7%	1	16	
Kingman	K-14	K-14 N OF US-54 (W JCT), W OF KINGMAN	4R	10	176	167	0	9	3	1	9	30	5	0	0	1	58	411	V	
7Z3MF1	US-54		0.86	2.3%	42.9%	40.7%	0.0%	2.2%	0.7%	0.2%	2.2%	7.3%	1.2%	0.0%	0.0%	0.2%	14.1%	1	18	
Kingman	K-14	K-14 S OF K-42, N OF RAGO	4R	10	436	644	0	20	37	10	43	263	43	2	0	12	428	1,517	V	
873GM5	K-42		0.72	0.6%	28.7%	42.5%	0.0%	1.3%	2.4%	0.7%	2.8%	17.3%	2.8%	0.1%	0.0%	0.8%	28.2%	1	20	
Kingman	RS-303 (HWY 17)	HWY 17 (RS-303) S OF US-54/400, 9 MI NE OF KINGMAN	5R	4	172	121	0	4	6	2	1	43	5	1	1	1	63	358	V	
8HON45	US-54		0.81	1.0%	47.9%	33.7%	0.0%	1.1%	1.5%	0.6%	0.3%	12.0%	1.4%	0.1%	0.1%	0.3%	17.5%	1	22	
Kingman	US-54	US-54 W OF K-17, 9 MI NE OF KINGMAN	2R	67	3,479	1,567	7	90	52	14	86	1,010	20	102	25	6	1,410	6,523	V	
8HON47	K-17		0.77	1.0%	53.3%	24.0%	0.1%	1.4%	0.8%	0.2%	1.3%	15.5%	0.3%	1.6%	0.4%	0.1%	21.6%	1	24	
Kiowa	US-54	US-54 W OF MAIN ST, S EDGE OF MULLINVILLE	3R	35	903	524	2	34	44	11	43	915	26	88	42	9	1,211	2,673	V	
5D0KP7	RS-963 (MAIN ST)		0.61	1.3%	33.8%	19.6%	0.1%	1.3%	1.6%	0.4%	1.6%	34.2%	1.0%	3.3%	1.6%	0.3%	45.3%	1	26	
Kiowa	US-183	US-183 N OF MCS-4904, 6.75 MI S OF GREENSBURG	4R	11	421	504	1	22	35	8	49	186	27	6	1	8	341	1,276	V	
50CI21	MCS-4904 (Q RD)		0.75	0.8%	33.0%	39.5%	0.0%	1.7%	2.7%	0.6%	3.8%	14.6%	2.1%	0.5%	0.0%	0.6%	26.7%	1	28	
Kiowa	US-54	US-54 1.2 MI W OF RS-219, W OF HAVILAND	3R	20	2,416	1,336	8	60	41	8	68	1,260	36	104	44	8	1,636	5,408	V	
61ILJ3	LOC		0.70	0.4%	44.7%	24.7%	0.1%	1.1%	0.8%	0.1%	1.3%	23.3%	0.7%	1.9%	0.8%	0.2%	30.3%	1	30	
Pawnee	K-19	K-19 N OF RS-1585, 4 MI S OF LARNED	4R	10	449	460	1	12	24	2	13	80	6	4	0	3	143	1,061	V	
65J0Z1	RS-1585 (DOLL RD)		0.86	0.9%	42.3%	43.3%	0.1%	1.1%	2.3%	0.1%	1.2%	7.5%	0.5%	0.3%	0.0%	0.2%	13.4%	1	32	
Pawnee	K-19	K-19 W OF RS-528, 7 MI E OF LARNED	4R	10	338	239	1	10	11	3	22	121	3	2	1	1	172	759	V	
6ES2A7	RS-528 (MACKSVILLE RD)		0.77	1.3%	44.6%	31.5%	0.1%	1.3%	1.4%	0.3%	2.8%	15.9%	0.4%	0.2%	0.1%	0.1%	22.7%	1	34	

District 5

2012 Vehicle Classification Summary

Kansas Dept of Transportation

County	Route	LOCATION DESCRIPTION	FC	VEHICLE CLASSIFICATION CATEGORY													Truck Total	ADT Surveys	District Start Pg
				1	2	3	4	5	6	7	8	9	10	11	12	13			
Site Id	Cross- Route		AF																
Pratt	US-281	US-281 N OF RS-1886, 2 MI S OF K-64 AT PRATT	4R	24	1,184	1,139	3	31	51	8	44	286	26	1	1	6	455	2,801	V
6V0L41	RS-1886		0.83	0.9%	42.3%	40.7%	0.1%	1.1%	1.8%	0.3%	1.6%	10.2%	0.9%	0.0%	0.0%	0.2%	16.2%	1	36
Reno	K-61	K-61 SW OF ANDRE RD, 3 MI NE OF LANGDON	3R	4	743	451	6	101	20	9	44	531	15	22	9	0	754	1,951	V
7UOTC6	MCS-7809 (ANDRE RD)		0.68	0.2%	38.1%	23.1%	0.3%	5.2%	1.0%	0.4%	2.2%	27.2%	0.7%	1.1%	0.5%	0.0%	38.6%	1	38
Reno	K-96	K-96 N OF US-50, W JCT, S HUTCHINSON	2U	20	1,109	617	0	58	34	3	39	275	8	10	1	0	427	2,172	V
8F9XO1	US-50		0.81	0.9%	51.0%	28.4%	0.0%	2.6%	1.5%	0.1%	1.8%	12.7%	0.4%	0.4%	0.0%	0.0%	19.6%	1	40
Reno	C-1820 (4th)	4th W OF CLOVERDALE, IN HUTCHINSON	4U	32	2,553	1,413	27	142	139	18	19	79	2	1	0	0	425	4,422	V
8FOZ07	CLOVERDALE		0.95	0.7%	57.7%	31.9%	0.6%	3.2%	3.1%	0.4%	0.4%	1.8%	0.0%	0.0%	0.0%	0.0%	9.6%	1	42
Reno	C-1802 (BLANCHARD)	BLANCHARD E OF SUNNYDELL, IN S HUTCHINSON	4U	25	1,696	910	1	36	67	1	10	14	1	0	0	2	130	2,760	V
8GCY43	SUNNYDELL		0.98	0.9%	61.4%	33.0%	0.0%	1.3%	2.4%	0.0%	0.3%	0.5%	0.0%	0.0%	0.1%	4.7%	1	44	
Reno	K-96	K-96, 2.25 MI SE OF K-17, SE OF SAND CREEK RD	2R	27	3,631	1,504	12	209	27	3	49	674	22	13	1	2	1,010	6,171	V
8K3VW8	SAND CREEK RD		0.84	0.4%	58.8%	24.4%	0.2%	3.4%	0.4%	0.0%	0.8%	10.9%	0.3%	0.2%	0.0%	0.0%	16.4%	1	46
Reno	K-61	K-61 SW OF 43rd, IN HUTCHINSON	3U	32	4,437	1,806	24	211	46	6	55	536	14	7	4	0	900	7,175	V
8MD0C6	C-1836 (43rd)		0.88	0.4%	61.8%	25.2%	0.3%	2.9%	0.6%	0.1%	0.8%	7.5%	0.2%	0.1%	0.0%	0.0%	12.5%	1	48
Rice	K-4	K-4 W OF RS-570, 3 MI E OF W CO LINE	4R	11	574	462	1	18	26	4	22	107	7	1	0	1	184	1,231	V
7IDDA7	RS-570 (4th RD)		0.85	0.9%	46.6%	37.5%	0.0%	1.4%	2.1%	0.3%	1.7%	8.7%	0.5%	0.1%	0.0%	0.0%	15.0%	1	50
Sedgwick	US-54	US-54 E OF K-163, N OF GARDEN PLAIN	2R	91	5,763	2,612	10	104	76	12	123	999	21	103	28	6	1,479	9,944	V
90FN53	K-163		0.84	0.9%	58.0%	26.3%	0.1%	1.0%	0.8%	0.1%	1.2%	10.0%	0.2%	1.0%	0.3%	0.1%	14.9%	1	52
Sedgwick	C-6350 (MAPLE)	MAPLE ST E OF MAMIE LA, IN WICHITA	4U	73	9,983	3,079	17	264	16	16	10	9	0	0	0	0	331	13,465	V
9HFNE3	MAMIE LA		1.00	0.5%	74.1%	22.9%	0.1%	2.0%	0.1%	0.1%	0.1%	0.1%	0.0%	0.0%	0.0%	0.0%	2.5%	1	54
Sedgwick	C-6401 (MOSLEY AVE)	MOSLEY AVE S OF 16th ST, IN WICHITA	4U	10	1,807	854	10	136	34	7	15	160	5	2	0	0	368	3,038	V
9POOA5	16th ST		0.91	0.3%	59.5%	28.1%	0.3%	4.5%	1.1%	0.2%	0.5%	5.3%	0.2%	0.1%	0.0%	0.0%	12.1%	1	56
Sedgwick	C-6475 (HILLSIDE ST)	HILLSIDE S OF 15th ST, IN WICHITA	3U	60	10,050	2,113	19	147	18	13	26	7	0	0	0	0	228	12,450	V
9ROO75	15th		1.00	0.5%	80.7%	17.0%	0.1%	1.2%	0.1%	0.1%	0.2%	0.1%	0.0%	0.0%	0.0%	0.0%	1.8%	1	58
Sedgwick	C-6390 (13th ST)	13th ST W OF PINECREST, IN WICHITA	4U	58	12,149	2,778	26	229	14	7	16	11	0	0	0	0	301	15,285	V
9TCO37	PINECREST		1.00	0.4%	79.5%	18.2%	0.2%	1.5%	0.1%	0.0%	0.1%	0.1%	0.0%	0.0%	0.0%	0.0%	2.0%	1	60
Stafford	US-281	US-281 N OF MCS-9306, 2 MI N OF US-50	3R	5	1,361	693	8	160	92	2	30	296	31	9	0	0	625	2,683	V
6ULWT1	MCS-9306 (20th)		0.82	0.2%	50.7%	25.8%	0.3%	6.0%	3.4%	0.1%	1.1%	11.0%	1.2%	0.3%	0.0%	0.0%	23.3%	1	62
Stafford	US-281	US-281 S OF US-50, S OF ST JOHN	3R	17	682	678	2	31	21	11	14	214	22	3	1	4	321	1,697	V
6UOVZ5	US-50		0.80	1.0%	40.2%	39.9%	0.1%	1.8%	1.2%	0.6%	0.8%	12.6%	1.3%	0.1%	0.0%	0.2%	18.9%	1	64

District 6

2012 Vehicle Classification Summary

Kansas Dept of Transportation

County	Route	LOCATION DESCRIPTION	FC	VEHICLE CLASSIFICATION CATEGORY													Truck Total	ADT Surveys	District Start Pg
				1	2	3	4	5	6	7	8	9	10	11	12	13			
Site Id	Cross- Route		AF																
Clark	US-54	US-54, 1 MI SW OF MINNEOLA	3R	38	1,222	672	3	39	49	12	47	1,136	49	98	44	6	1,481	3,412	VI
47XGJ2	LOC		0.62	1.1%	35.8%	19.7%	0.1%	1.1%	1.4%	0.3%	1.4%	33.3%	1.4%	2.9%	1.3%	0.2%	43.4%	1	6
Finney	US-50 B	US-50B/83B S OF US-50/83/400 (NW JCT), NW GARDEN CITY	3U	51	2,643	1,731	6	34	69	5	40	236	13	4	0	2	408	4,833	VI
2J6YF5	US-50		0.91	1.1%	54.7%	35.8%	0.1%	0.7%	1.4%	0.1%	0.8%	4.9%	0.3%	0.1%	0.0%	0.0%	8.4%	1	8
Finney	US-50	US-50 / 83 / 400 W OF CAMPUS DR, IN GARDEN CITY	3R	102	3,371	2,307	3	61	178	28	137	2,102	112	13	9	23	2,663	8,443	VI
2LXYD7	C-1421 (CAMPUS DR)		0.69	1.2%	39.9%	27.3%	0.0%	0.7%	2.1%	0.3%	1.6%	24.9%	1.3%	0.1%	0.1%	0.3%	31.5%	1	10
Finney	US-50	US-50 BYPASS N OF SPRUCE, IN GARDEN CITY	3U	100	4,395	2,868	3	63	181	42	126	2,055	101	13	4	21	2,606	9,968	VI
2MFX91	C-1406 (SPRUCE)		0.73	1.0%	44.1%	28.8%	0.0%	0.6%	1.8%	0.4%	1.3%	20.6%	1.0%	0.1%	0.0%	0.2%	26.1%	1	12
Finney	RS-949 (POLE LINE RD)	POLE LINE RD E OF US-50, 4.5 MI E OF GARDEN CITY	5R	2	139	162	1	3	5	0	8	47	7	1	0	0	71	373	VI
2TRWZ3	US-50		0.80	0.4%	37.2%	43.4%	0.3%	0.8%	1.2%	0.0%	2.1%	12.6%	1.9%	0.1%	0.0%	0.0%	19.1%	1	14
Ford	US-400	US-400 E OF K-34, NW OF BUCKLIN	3R	34	1,111	765	4	45	30	13	43	397	32	17	1	9	589	2,498	VI
4Y0KY3	K-34		0.76	1.4%	44.5%	30.6%	0.2%	1.8%	1.2%	0.5%	1.7%	15.9%	1.3%	0.7%	0.0%	0.3%	23.6%	1	16
Gray	US-56	US-56 SW OF K-144, NE OF COPELAND	4R	21	710	632	0	18	42	3	30	384	12	5	0	3	494	1,857	VI
35CKO6	K-144		0.74	1.1%	38.2%	34.0%	0.0%	0.9%	2.2%	0.1%	1.6%	20.7%	0.6%	0.2%	0.0%	0.1%	26.6%	1	18
Gray	K-23	K-23 N OF US-56, 5 MI NE OF MONTEZUMA	4R	6	342	319	0	8	25	1	14	140	15	3	2	7	214	881	VI
3LRMJ1	US-56		0.75	0.7%	38.8%	36.2%	0.0%	0.9%	2.8%	0.1%	1.5%	15.9%	1.7%	0.3%	0.2%	0.8%	24.3%	1	20
Gray	US-56	US-56 NE OF K-23, 12 MI S OF CIMARRON	4R	29	1,074	923	0	27	41	7	51	563	23	8	1	4	723	2,749	VI
3LRMJ2	K-23		0.74	1.1%	39.1%	33.6%	0.0%	1.0%	1.5%	0.3%	1.8%	20.5%	0.8%	0.3%	0.0%	0.1%	26.3%	1	22
Gray	K-23	K-23 S OF US-56, 5 MI NE OF MONTEZUMA	4R	15	275	239	1	6	22	1	5	71	10	3	2	5	123	652	VI
3LRMJ5	US-56		0.80	2.2%	42.2%	36.7%	0.1%	0.9%	3.4%	0.2%	0.7%	10.8%	1.5%	0.4%	0.2%	0.8%	18.9%	1	24
Greeley	K-96	K-96 W OF RS-288, 8 MI W OF (K-27 IN TRIBUNE)	4R	17	118	172	0	15	12	2	21	143	12	4	1	4	211	518	VI
0J4DJ7	RS-288		0.65	3.3%	22.8%	33.1%	0.0%	2.9%	2.3%	0.3%	4.0%	27.5%	2.2%	0.8%	0.1%	0.7%	40.8%	1	26
Hamilton	US-50	US-50 SE OF KS-CO STATE LINE	3R	47	610	433	4	16	21	9	46	588	15	2	1	2	701	1,790	VI
0740V4	KS-CO ST LINE		0.65	2.6%	34.1%	24.2%	0.2%	0.9%	1.1%	0.5%	2.5%	32.8%	0.8%	0.1%	0.0%	0.1%	39.2%	1	28
Haskell	US-56	US-56 SW OF US-83, 1 MI SW OF SUBLETTE	3R	8	1,024	786	1	20	29	3	24	258	11	0	2	2	348	2,165	VI
2IOI86	US-83		0.83	0.3%	47.3%	36.3%	0.0%	0.9%	1.3%	0.1%	1.1%	11.9%	0.5%	0.0%	0.1%	0.1%	16.1%	1	30
Haskell	K-144	K-144 E OF US-83, NW OF SUBLETTE	4R	5	208	256	0	16	18	4	17	301	11	1	0	4	370	839	VI
2IXKW3	US-83		0.62	0.5%	24.8%	30.5%	0.0%	1.9%	2.1%	0.5%	2.0%	35.8%	1.3%	0.1%	0.0%	0.4%	44.1%	1	32
Haskell	US-83	US-83 S OF US-160/K-144 JCT, NW OF SUBLETTE	3R	46	1,359	1,266	2	60	93	12	70	967	57	4	2	10	1,275	3,946	VI
2IXKW5	US-160		0.70	1.2%	34.4%	32.1%	0.0%	1.5%	2.4%	0.3%	1.8%	24.5%	1.4%	0.1%	0.0%	0.2%	32.3%	1	34

District 6

2012 Vehicle Classification Summary

Kansas Dept of Transportation

County	Route	LOCATION DESCRIPTION	FC	VEHICLE CLASSIFICATION CATEGORY													Truck Total	ADT Surveys	District Start Pg
				AF	1	2	3	4	5	6	7	8	9	10	11	12			
Seward	US-54	US-54 AT STATE LINE, SW OF LIBERAL	3R	52	2,837	1,654	6	57	103	11	70	1,304	40	88	26	11	1,714	6,257	VI
2803O2	STATE LINE		0.72	0.8%	45.3%	26.4%	0.1%	0.9%	1.6%	0.2%	1.1%	20.8%	0.6%	1.4%	0.4%	0.2%	27.4%	1	36
Seward	US-83	US-83 S OF K-51, N OF LIBERAL	3R	62	1,971	1,539	3	63	98	13	94	927	37	8	1	11	1,254	4,825	VI
2E08X5	K-51		0.74	1.3%	40.8%	31.9%	0.1%	1.3%	2.0%	0.3%	1.9%	19.2%	0.8%	0.2%	0.0%	0.2%	26.0%	1	38
Seward	K-51	K-51 W OF US-83, N OF LIBERAL	4R	4	878	525	1	22	20	2	13	201	13	0	1	2	272	1,678	VI
2E08X7	US-83		0.83	0.2%	52.3%	31.3%	0.0%	1.3%	1.2%	0.1%	0.8%	12.0%	0.7%	0.0%	0.0%	0.1%	16.2%	1	40
Seward	US-83	US-83 N OF RS-2258, S OF LIBERAL	2U	21	1,747	1,432	2	43	82	13	37	667	46	8	2	4	902	4,100	VI
2EX3Y1	RS-2258 (OLD US-83)		0.77	0.5%	42.6%	34.9%	0.0%	1.0%	2.0%	0.3%	0.9%	16.3%	1.1%	0.2%	0.0%	0.1%	22.0%	1	42
Seward	US-83	US-83 N OF US-54, E OF LIBERAL	3U	43	3,822	2,451	6	64	127	13	57	1,070	43	8	6	12	1,403	7,718	VI
2F04X1	US-54		0.80	0.6%	49.5%	31.8%	0.1%	0.8%	1.6%	0.2%	0.7%	13.9%	0.6%	0.1%	0.1%	0.2%	18.2%	1	44
Seward	US-160	US-160 E OF US-83, 15 MI NE OF LIBERAL	4R	2	124	180	1	14	14	4	10	100	11	1	1	1	155	460	VI
2I9BZ3	US-83		0.70	0.4%	27.0%	39.0%	0.1%	2.9%	3.0%	0.9%	2.2%	21.7%	2.3%	0.2%	0.1%	0.1%	33.6%	1	46
Seward	K-190	K-190 W OF US-83, 1 MI S OF HS CO LI	5R	1	52	103	1	4	6	1	3	47	2	1	0	0	64	219	VI
2IIF47	US-83		0.73	0.2%	23.6%	47.1%	0.5%	1.8%	2.7%	0.2%	1.4%	21.5%	0.7%	0.2%	0.0%	0.0%	29.1%	1	48
Seward	US-54	US-54, 1.25 MI NE OF KISMET CO RD W	3R	17	1,353	1,091	7	97	33	3	51	1,273	50	97	41	16	1,667	4,127	VI
2WOA86	CO RD W		0.64	0.4%	32.8%	26.4%	0.2%	2.4%	0.8%	0.1%	1.2%	30.8%	1.2%	2.4%	1.0%	0.4%	40.4%	1	50
Stanton	US-160	US-160 SW OF K-27, S JCT, SW OF JOHNSON CITY	4R	6	310	360	0	8	12	4	6	81	5	3	1	4	122	797	VI
0PRLP6	K-27		0.83	0.7%	38.9%	45.2%	0.0%	1.0%	1.5%	0.4%	0.7%	10.1%	0.6%	0.3%	0.1%	0.4%	15.2%	1	52
Stanton	K-27	K-27 N OF US-160, N JCT, NW OF JOHNSON CITY	4R	6	265	368	0	11	26	6	31	475	17	1	1	5	572	1,210	VI
0PRM41	US-160		0.60	0.5%	21.9%	30.4%	0.0%	0.9%	2.1%	0.5%	2.6%	39.3%	1.4%	0.1%	0.0%	0.4%	47.2%	1	54
Stevens	K-25	K-25 S OF US-56 (S JCT), SW OF HUGOTON	4R	0	114	193	1	2	9	1	5	74	3	1	1	2	97	404	VI
1808U5	US-56		0.75	0.0%	28.3%	47.7%	0.1%	0.5%	2.1%	0.2%	1.1%	18.3%	0.7%	0.2%	0.2%	0.4%	24.0%	1	56
Stevens	K-25	K-25 S OF RS-480, 9 MI N OF HUGOTON	4R	6	453	500	2	19	27	3	33	338	10	3	1	1	435	1,394	VI
1JUDP5	RS-480		0.70	0.4%	32.5%	35.9%	0.1%	1.3%	1.9%	0.2%	2.3%	24.2%	0.7%	0.2%	0.1%	0.1%	31.2%	1	58
Stevens	US-56	US-56 E OF RS-1934, E OF CAVE	4R	5	459	416	1	10	29	2	32	278	15	1	1	2	369	1,248	VI
2I9F93	RS-1934 (10 MI RD)		0.71	0.4%	36.7%	33.3%	0.0%	0.8%	2.3%	0.1%	2.5%	22.3%	1.2%	0.1%	0.1%	0.1%	29.6%	1	60
Wichita	K-96	K-96 W OF 409th RD, 1 MI W OF CO LINE	4R	21	599	501	2	18	27	5	35	369	19	4	1	2	481	1,600	VI
21PDB7	409th RD		0.71	1.3%	37.4%	31.3%	0.1%	1.1%	1.7%	0.3%	2.2%	23.1%	1.2%	0.3%	0.1%	0.1%	30.0%	1	62