

**KANSAS DEPARTMENT OF TRANSPORTATION  
BUREAU OF TRANSPORTATION PLANNING**

**DECEMBER 2014**

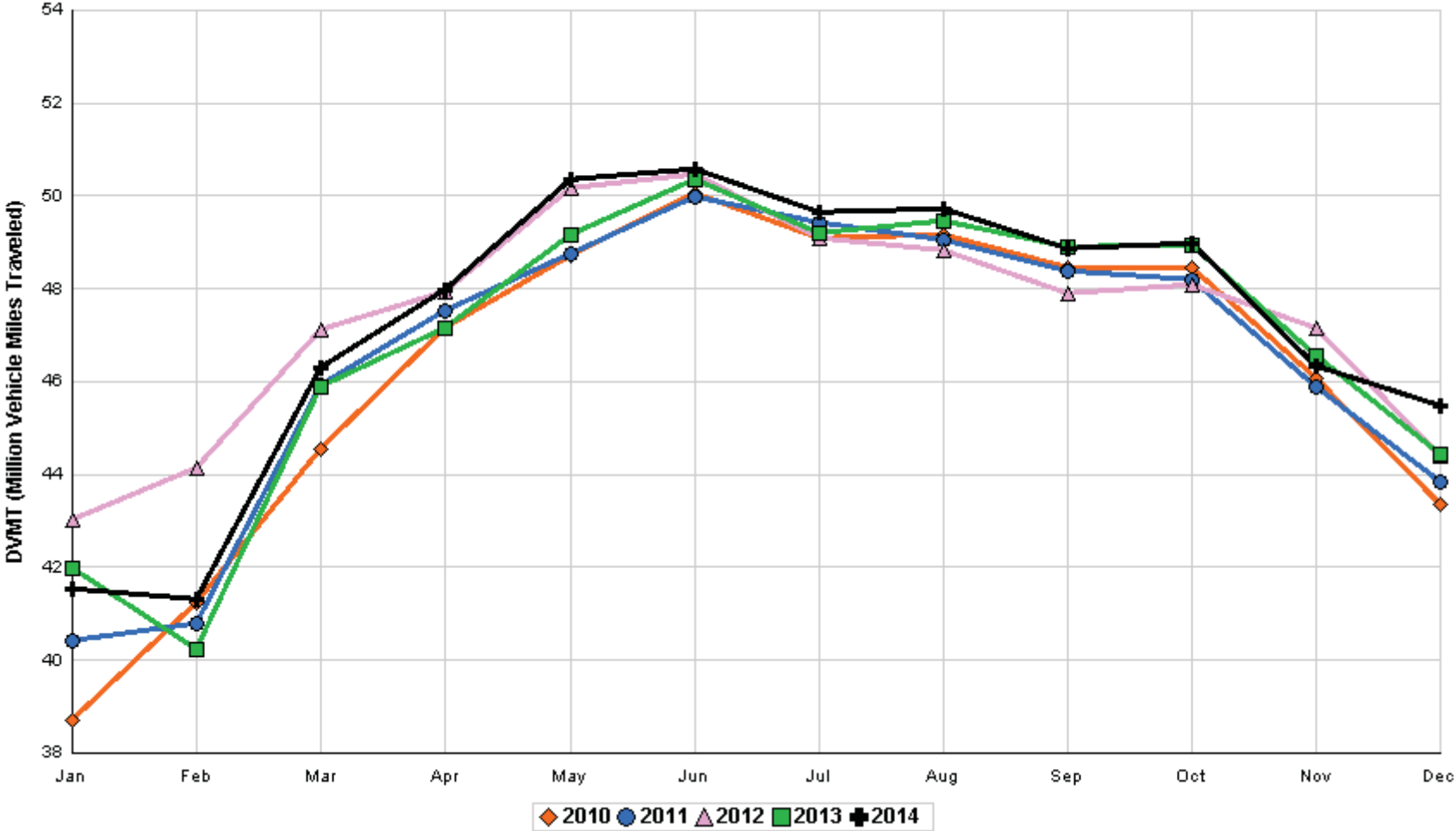
**SIGNIFICANT FACTS AND TRENDS**



Travel on the Kansas State Highway System				
	Daily Vehicle Miles		% Change	
	(In Millions )		2013 to 2014	
Month	2013	2014	Month	Year
Jan	41.967	41.540	- 1.0	- 1.0
Feb	40.249	41.322	2.7	0.8
Mar	45.891	46.309	0.9	0.8
Apr	47.138	47.954	1.7	1.1
May	49.171	50.335	2.4	1.4
Jun	50.352	50.563	0.4	1.2
Jul	49.184	49.647	0.9	1.1
Aug	49.468	49.706	0.5	1.1
Sep	48.898	48.856	- 0.1	0.9
Oct	48.938	48.967	0.1	0.8
Nov	46.540	46.323	- 0.5	0.7
Dec	44.445	45.485	2.3	0.8
Average	46.853	47.251		

**Contact the Traffic and Field Operations Unit with questions or requests at:  
(785)-296-3841 or E-mail: [TrafficCounts@ksdot.org](mailto:TrafficCounts@ksdot.org)  
The Monthly Average Daily Traffic (MADT) is Calculated Utilizing the  
Day-Of-Week (DOW) Method. Missing Traffic Count Data will Not be Estimated  
Therefore Station Summary Data will be Blank where Data is Not Available.**

Total Travel on Kansas State Highway System 2010 - 2014



Date: 13-JAN-2015

Month of December, 2014

Sparse Matrix Model

Route Description	Location Description	County	Average Daily Traffic for the Month			Percent Change Month		Maximum Hour				Maximum Day			7 Day Avg	5 Day Avg	7 Day / 5 Day Avg
			2012	2013	2014	2012	2013	Volume	Hour	DOW	Day	Volume	DOW	Day			

Rural State Highways for District 1

US-75	1.2 MILES N. OF US-36 I.C.	BROWN	3,555	3,833	3,963	11.5	3.4	398	4- 5 pm	FRI	19	4,967	FRI	19	3,963	4,097	.97
US 24	1.5 MILES N.E. OF LAWRENCE	DOUGLAS	5,651	5,547	6,006	6.3	8.3	739	4- 5 pm	FRI	19	7,730	FRI	19	6,006	6,326	.95
US 56	4 MILES E. OF OVERBROOK	DOUGLAS	1,716	1,745	1,781	3.8	2.1	235	4- 5 pm	FRI	12	2,216	FRI	12	1,781	1,832	.97
US 75	5.8 MILES N. OF HOLTON	JACKSON	5,428	5,685	5,833	7.5	2.6	636	5- 6 pm	FRI	12	7,093	FRI	12	5,833	5,881	.99
K 10	0.2 MILES E. OF RS. 346 INTCHG.	JOHNSON	28,356	28,461	29,014	2.3	1.9	3,626	5- 6 pm	FRI	5	36,797	FRI	19	29,014	30,536	.95
K 99	2.9 MILES S. OF EMPORIA	LYON	3,440	3,407	3,526	2.5	3.5	435	7- 8 am	MON	1	4,322	FRI	19	3,526	3,758	.94
US 36	13 MILES E. OF MARYSVILLE	MARSHALL	2,194	2,162	2,155	- 1.8	- 0.3	233	1- 2 pm	FRI	19	2,671	FRI	12	2,155	2,265	.95
K 68	0.15 MILES E. OF JCT K 268	OSAGE	2,282	2,084	2,261	- 0.9	8.5	270	4- 5 pm	FRI	19	2,681	FRI	19	2,261	2,318	.98
K 268	0.1 MILES E. OF US 75	OSAGE	2,513														
K 18	0.7 MILES N.E. OF OGDEN	RILEY			20,166			2,643	4- 5 pm	FRI	12	28,568	FRI	12	20,166	21,754	.93
US 24	4 MILES N. OF MANHATTAN	RILEY	6,169	5,946	6,245	1.2	5.0	759	4- 5 pm	FRI	12	8,151	FRI	12	6,245	6,342	.98
US 24	1 MILE N.W. OF ROSSVILLE	SHAWNEE	3,767	3,739	4,036	7.1	7.9	489	4- 5 pm	TUE	16	5,028	FRI	19	4,036	4,302	.94
I 70	4.7 MILES E. OF K 30 INTCHG. (MAPLE HILL)	WABAUNSEE	19,154	19,131	20,590	7.5	7.6	2,542	5- 6 pm	SUN	28	26,948	SAT	20	20,590	19,538	1.05

Percent of Change for District 1 Stations

4.5 4.5

Rural State Highways for District 2

K 9	5.8 MILES E. OF CLIFTON	CLAY	301	318	327	8.6	2.8	52	9-10 am	TUE	2	416	TUE	2	327	361	.91
K 15	3.3 MILES N. OF CLAY CENTER	CLAY	1,697	1,723	1,790	5.5	3.9	268	5- 6 pm	WED	17	2,172	WED	17	1,790	1,947	.92
I 70	W. OF K-232 INTCHG. (WILSON)	ELLSWORTH	9,765	10,309	10,730	9.9	4.1	1,833	3- 4 pm	SUN	28	18,664	SUN	28	10,730	9,930	1.08
K 141	2.8 MILES S. OF KANOPOLIS DAM	ELLSWORTH	300	329	286	- 4.7	- 13.1	44	4- 5 pm	FRI	5	369	WED	3	286	293	.98
K 18	1.8 MILES W. OF JUNCTION CITY	GEARY	1,128	1,136	1,136	0.7	0.0	202	7- 8 am	FRI	5	1,479	FRI	12	1,136	1,235	.92
I 70	4.5 MILES S.W. OF JUNCTION CITY	GEARY	14,980	15,139	16,202	8.2	7.0	1,962	4- 5 pm	SUN	28	22,178	SUN	28	16,202	15,822	1.02
US 77	4 MILES S. OF JUNCTION CITY	GEARY	3,489	3,425	3,047	- 12.7	- 11.0	371	4- 5 pm	FRI	12	3,726	FRI	12	3,047	3,125	.98
US 36	1 MILE E. OF MANKATO	JEWELL	1,698	1,632	1,665	- 1.9	2.0	193	4- 5 pm	FRI	12	2,229	FRI	5	1,665	1,773	.94
K 18	0.5 MILES W. OF LINCOLN	LINCOLN	835	901	882	5.6	- 2.1	117	4- 5 pm	TUE	16	1,183	FRI	5	882	951	.93
I 135	0.5 MILES N. OF US 56 INTCHG. (MCPHERSON)	MCPHERSON	11,839	12,475	13,221	11.7	6.0	1,551	4- 5 pm	SUN	28	17,612	SAT	20	13,221	12,867	1.03
K 14	3 MILES S. OF BELOIT	MITCHELL	735	791	731	- 0.5	- 7.6	97	4- 5 pm	FRI	19	975	FRI	19	731	794	.92
US 81	2.5 MILES S. OF BELLEVILLE	REPUBLIC	4,691	4,833	4,986	6.3	3.2	632	2- 3 pm	SUN	28	6,889	SUN	28	4,986	4,947	1.01

Percent of Change for District 2 Stations

6.9 3.8

Rural State Highways for District 3

US 83	6.2 MILES S. OF OAKLEY	LOGAN	1,627	1,807	1,892	16.3	4.7	217	11-12 pm	THU	11	2,562	FRI	19	1,892	2,018	.94
US 36	9.5 MILES W. OF NORTON	NORTON	812	872	903	11.2	3.6	104	4- 5 pm	TUE	16	1,049	THU	11	903	963	.94
US 183	1.2 MILES S. OF PHILLIPSBURG	PHILLIPS	2,061	2,073	2,074	0.6	0.0	232	4- 5 pm	TUE	2	2,577	FRI	5	2,074	2,192	.95
K 23	14.5 MILES S. OF HOXIE	SHERIDAN	780	797	750	- 3.8	- 5.9	103	3- 4 pm	THU	18	1,013	FRI	5	750	809	.93
I 70	2.2 MI. E OF KANORADO EXIT	SHERMAN	7,480	8,066	8,217	9.9	1.9	1,632	1- 2 pm	SUN	28	15,615	SUN	28	8,217	7,489	1.10
US 24	7.3 MILES E. OF COLBY	THOMAS	1,603	1,764	1,686	5.2	- 4.4	211	5- 6 pm	FRI	19	2,264	FRI	19	1,686	1,756	.96
K 25	1.8 MILES S. OF COLBY	THOMAS	718	589	678	- 5.6	15.1	132	2- 3 pm	TUE	23	898	TUE	2	678	749	.91
I 70	1 MILE W. OF WAKEENEY	TREGO	8,599	9,102	9,664	12.4	6.2	1,755	2- 3 pm	SUN	28	16,339	SUN	28	9,664	9,078	1.06
US 40	1.4 MILES E. OF KAN-COLO ST. LINE	WALLACE	405	425	531	31.1	24.9	487	12- 1 pm	TUE	23	3,272	TUE	23	531	584	.91

Percent of Change for District 3 Stations

9.6 3.5

Month of December, 2014

Sparse Matrix Model

Date: 13-JAN-2015

---- Average Daily Traffic ----  
for the Month

Percent Change  
Month

---- Maximum Hour ----  
Volume Hour DOW Day

--- Maximum Day ---  
Volume DOW Day

7 Day Avg  
5 Day Avg  
7 Day / 5 Day Avg

Route Description Location Description County

2012 2013 2014 2012 2013

Rural State Highways for District 4

US 54	3 MILES W. OF IOLA	ALLEN	2,527	2,470	2,556	1.1	3.5	270	5- 6 pm	FRI	12	3,215	FRI	12	2,556	2,684	.95
US 169	1 MILE N. OF GREELEY	ANDERSON	2,998	2,937	3,085	2.9	5.0	331	4- 5 pm	FRI	12	3,904	FRI	19	3,085	3,170	.97
US 69	2 MILES N. OF FT SCOTT	BOURBON		5,620	6,060		7.8	726	4- 5 pm	FRI	12	7,825	FRI	12	6,060	6,160	.98
US 166	0.5 MILES W. OF NIOTAZE	CHAUTAUQUA	2,323	2,165	2,322	0.0	7.3	253	4- 5 pm	FRI	12	2,896	FRI	12	2,322	2,416	.96
I 35	2 MILES W. OF K- 131 INTCHG. N. OF LEBO	COFFEY	12,886	12,798	12,778	- 0.8	- 0.2	1,211	3- 4 pm	FRI	5	15,112	MON	29	12,778	12,980	.98
US 59	4.3 MILES S. OF OTTAWA	FRANKLIN	5,548	5,611	5,938	7.0	5.8	681	4- 5 pm	FRI	5	7,154	FRI	12	5,938	6,119	.97
I 35	2 MILES N.E. OF THE WELLSVILLE INTCHG.	FRANKLIN	19,550	19,870	20,659	5.7	4.0	2,388	4- 5 pm	SUN	28	24,971	FRI	19	20,659	20,605	1.00
US 400	3 MILES E. OF PARSONS	LABETTE	3,379	3,386	3,608	6.8	6.6	408	4- 5 pm	FRI	12	4,624	FRI	12	3,608	3,692	.98
US 59	4 MILES S. OF ERIE	NEOSHO	2,836	2,730	2,869	1.2	5.1	353	3- 4 pm	FRI	12	3,510	THU	11	2,869	3,133	.92
US 169	1 MILE N. OF THAYER	NEOSHO	3,714	4,087	3,991	7.5	- 2.3	432	4- 5 pm	FRI	12	4,917	FRI	12	3,991	4,208	.95
US 75	1 MILE N. OF YATES CENTER	WOODSON	2,492	2,478	2,577	3.4	4.0	290	5- 6 pm	FRI	12	3,327	FRI	12	2,577	2,648	.97
K 105	2 MILES N. OF TORONTO	WOODSON	514	503	472	- 8.2	- 6.2	66	4- 5 pm	MON	29	630	THU	4	472	481	.98

3.6 3.5

Percent of Change for District 4 Stations

Rural State Highways for District 5

US 56	5.5 MILES E. OF GREAT BEND	BARTON	4,684	4,934	5,074	8.3	2.8	570	5- 6 pm	FRI	19	6,394	FRI	19	5,074	5,420	.94
US 77	2 MILES N. OF EL DORADO	BUTLER	2,322	2,326	2,381	2.5	2.4	295	4- 5 pm	FRI	12	2,911	FRI	12	2,381	2,440	.98
US 400	1.5 MILES E. OF LEON	BUTLER	3,728	5,280	4,400	18.0	- 16.7	490	11-12 pm	SAT	27	5,352	FRI	19	4,400	4,476	.98
US 77	3.7 MILES N. OF ARKANSAS CITY	COWLEY	10,089	9,937	10,061	- 0.3	1.2	1,110	3- 4 pm	FRI	12	12,425	FRI	12	10,061	10,752	.94
US 160	6.2 MILES E. OF ATTICA	HARPER	1,473	1,443	1,372	- 6.9	- 4.9	151	4- 5 pm	THU	11	1,783	FRI	5	1,372	1,451	.95
US 50	3 MILES N.E. OF NEWTON	HARVEY	5,792	5,667	5,574	- 3.8	- 1.6	556	3- 4 pm	FRI	12	6,661	FRI	5	5,574	5,686	.98
US 54	14 MILES W. OF KINGMAN	KINGMAN		4,837	4,934		2.0	516	3- 4 pm	SUN	28	5,601	SUN	28	4,934	4,928	1.00
US 54	1.5 MILES W. OF HAVILAND	KIOWA	5,027	5,107	5,101	1.5	- 0.1	499	3- 4 pm	SUN	28	6,093	SAT	20	5,101	5,097	1.00
US 183	7 MILES S. OF GREENSBURG	KIOWA	937	905	884	- 5.7	- 2.3	98	9-10 am	TUE	9	1,157	FRI	5	884	953	.93
US 56	5 MILES S.W. OF LARNED	PAWNEE	2,047	2,105	2,167	5.9	2.9	264	3- 4 pm	FRI	12	2,515	FRI	19	2,167	2,228	.97
K 61	5 MILES S.W. OF ARLINGTON	RENO	2,000	1,943	1,992	- 0.4	2.5	232	3- 4 pm	FRI	12	2,464	FRI	12	1,992	2,045	.97
K 14	1 MILE N. OF LYONS	RICE	1,297	1,285	1,343	3.5	4.5	161	4- 5 pm	FRI	5	1,745	FRI	5	1,343	1,444	.93
K 42	3 MILES N.E. OF VIOLA	SEDGWICK	4,506	4,332	4,462	- 1.0	3.0	504	4- 5 pm	THU	11	5,380	FRI	19	4,462	4,732	.94
US 281	0.5 MILES S. OF ST. JOHN	STAFFORD	2,253	2,362	2,397	6.4	1.5	261	4- 5 pm	FRI	5	3,209	FRI	5	2,397	2,604	.92
US 81	4.1 MILES S. OF WELLINGTON	SUMNER	1,578	1,508	1,604	1.6	6.4	176	3- 4 pm	TUE	2	1,943	WED	3	1,604	1,707	.94

2.3 - .4

Percent of Change for District 5 Stations

Rural State Highways for District 6

US 83	8.2 MILES S. OF GARDEN CITY	FINNEY	3,930	4,224	4,365	11.1	3.3	490	5- 6 pm	TUE	9	5,418	FRI	19	4,365	4,475	.98
US 50	4.5 MILES W. OF DODGE CITY	FORD	6,135	5,451	5,485	- 10.6	0.6	528	5- 6 pm	MON	22	6,748	FRI	19	5,485	5,684	.96
US 400	4.5 MILES W. OF DODGE CITY	FORD	1,095	1,059	1,017	- 7.1	- 4.0	117	4- 5 pm	WED	10	1,356	MON	22	1,017	1,110	.92
K 25	2.5 MILES N. OF ULYSSES	GRANT	1,452	1,543	1,508	3.9	- 2.3	175	5- 6 pm	FRI	12	1,909	MON	22	1,508	1,606	.94
K 27	15 MILES N OF TRIBUNE	GREELEY	655	635	667	1.8	5.0	105	2- 3 pm	FRI	19	972	FRI	19	667	749	.89
US 50	0.8 MILES E. OF KAN-COLO ST. LINE	HAMILTON	1,275	1,303	1,343	5.3	3.1	211	4- 5 pm	TUE	23	2,173	TUE	23	1,343	1,361	.99
US 283	8.3 MILES N. OF JETMORE	HODGEMAN	825	848	824	- 0.1	- 2.8	92	2- 3 pm	WED	17	1,123	TUE	2	824	901	.91
US 54	3.7 MILES W. OF MEADE	MEADE	3,617	3,814	3,874	7.1	1.6	390	10-11 am	MON	29	4,784	SAT	20	3,874	3,860	1.00
K 96	12 MILES W. OF SCOTT CITY	WICHITA	1,138	1,206	1,203	5.7	- 0.2	145	5- 6 pm	TUE	9	1,582	FRI	19	1,203	1,315	.91

.8 1.0

Percent of Change for District 6 Stations

Month of December, 2014

Sparse Matrix Model

Date: 13-JAN-2015

---- Average Daily Traffic ----  
for the Month  
2012 2013 2014

Percent Change  
Month  
2012 2013

---- Maximum Hour ----  
Volume Hour DOW Day

--- Maximum Day ---  
Volume DOW Day

7 Day Avg  
5 Day Avg  
7 Day / 5 Day Avg

Route Description Location Description County

Rural Secondary Stations

RS 61	6.5 MILES S.W. OF HIAWATHA	BROWN	217	214	240	10.6	12.1	41	3- 4 pm	FRI	12	315	MON	1	240	258	.93
RS 463	2.5 MILES S.W. OF BELOIT	MITCHELL	262	224	228	- 13.0	1.8	34	3- 4 pm	FRI	5	308	FRI	5	228	245	.93
RS 272	2 MILES S. OF QUINTER	GOVE	309	289	337	9.1	16.6	48	4- 5 pm	TUE	16	435	FRI	5	337	352	.96
RS 13	0.5 MILES N. OF BUSH CITY	ANDERSON	384	413	316	- 17.7	- 23.5	38	4- 5 pm	TUE	16	415	WED	3	316	330	.96
RS 2316	3 MILES E. OF PARSONS	LABETTE	1,717	1,583	1,690	- 1.6	6.8	215	5- 6 pm	TUE	16	2,148	FRI	12	1,690	1,814	.93
RS 303	0.8 MI. S. OF US-54 & K17 JCT. (MIDWAY)	KINGMAN	263	268	303	15.2	13.1	53	4- 5 pm	WED	10	398	THU	4	303	319	.95
RS 251	6 MILES W. OF FORD	FORD	429	414	447	4.2	8.0	68	4- 5 pm	FRI	5	644	FRI	5	447	458	.98

Percent of Change for Rural Secondary Stations

- .6 4.6

Reservoir Stations

K 237	1.5 MILES N. OF JCT. US 24	JEFFERSON	918	856	919	0.1	7.4	121	4- 5 pm	WED	3	1,087	FRI	12	919	949	.97
LOCAL ROAD	KANOPOLIS RESERVOIR N. OF DAM	ELLSWORTH	57	24	32	- 43.9	33.3					78	SUN	7	32	32	1.00
LOCAL ROAD	KANOPOLIS RESERVOIR S. OF DAM	ELLSWORTH	54	22	38	- 29.6	72.7					105	SAT	6	38	33	1.15
LOCAL ROAD	CEDAR BLUFF RESERVOIR N. OF DAM	TREGO	23	34	16	- 30.4	- 52.9					57	SUN	14	16	10	1.60

Percent of Change for Reservoir Stations

- 4.5 7.4

Kansas City Stations

US-69	0.4 MILES S. OF 135TH ST.	JOHNSON	48,304	48,072	50,181	3.9	4.4	5,615	4- 5 pm	FRI	12	61,770	FRI	12	50,181	53,577	.94
135TH	135TH E. OF MUR-LEN	JOHNSON	33,811	34,847	34,092	0.8	- 2.2	3,429	4- 5 pm	FRI	19	42,674	TUE	23	34,092	35,583	.96
BLACKBOB	BLACKBOB RD. S. OF 139TH	JOHNSON	20,600	20,041	21,227	3.0	5.9	2,217	5- 6 pm	WED	17	25,793	TUE	23	21,227	21,591	.98
I 435	0.8 MILES S. OF I - 70	WYANDOTTE	57,943	60,774	64,726	11.7	6.5	7,718	5- 6 pm	THU	4	75,603	FRI	5	64,726	69,598	.93

Percent of Change for Kansas City Stations

6.0 4.0

Salina Stations

OHIO ST.	OHIO ST. N. OF WESTCHESTER DR.	SALINE	16,344	15,903	16,347	0.0	2.8	1,735	4- 5 pm	TUE	16	19,972	FRI	12	16,347	18,060	.91
----------	--------------------------------	--------	--------	--------	--------	-----	-----	-------	---------	-----	----	--------	-----	----	--------	--------	-----

Percent of Change for Salina Stations

.0 2.8

Topeka Stations

45TH ST.	45TH ST. E. OF INDIANA	SHAWNEE	6,445	5,250	5,293	- 17.9	0.8	642	3- 4 pm	FRI	19	6,645	FRI	19	5,293	5,451	.97
N. TOPEKA	TOPEKA BLVD. NORTH OF PARAMORE ST.	SHAWNEE	15,808	15,928	16,115	1.9	1.2	2,416	4- 5 pm	FRI	19	20,969	FRI	19	16,115	17,844	.90
I 70	I 70 E. OF MACVICAR ST.	SHAWNEE	41,238	42,083	40,932	- 0.7	- 2.7	4,556	4- 5 pm	FRI	12	51,083	FRI	12	40,932	43,331	.94
I 470	I 470 N.W. OF HUNTOON	SHAWNEE	31,782	31,470	31,940	0.5	1.5	3,765	5- 6 pm	MON	22	40,855	FRI	19	31,940	34,037	.94
US 40	US 40 E. OF TECUMSEH RD.	SHAWNEE	4,327	3,806	3,932	- 9.1	3.3	564	7- 8 am	WED	3	4,908	WED	17	3,932	4,286	.92
US 75	US 75 N. OF S.W. 57TH	SHAWNEE	13,526	13,213	13,359	- 1.2	1.1	1,635	7- 8 am	TUE	9	16,576	FRI	12	13,359	14,527	.92
K 4	1MI. S. OF JCT. US-24	SHAWNEE	7,695	7,521	7,719	0.3	2.6	1,006	7- 8 am	WED	17	9,672	FRI	12	7,719	8,359	.92

Percent of Change for Topeka Stations

- 1.3 .0

Month of December, 2014

Sparse Matrix Model

Date: 13-JAN-2015

---- Average Daily Traffic ----			Percent Change		---- Maximum Hour ----				--- Maximum Day ---			7 Day	5 Day	7 Day /	
for the Month			Month		Volume	Hour	DOW	Day	Volume	DOW	Day	Avg	Avg	5 Day	Avg
2012	2013	2014	2012	2013											

Route Description	Location Description	County
-------------------	----------------------	--------

Wichita Stations

K 96	K-96 E. OF GREENWICH RD.	SEDGWICK	21,393	22,201	20,990	- 1.9	- 5.5	2,664	5- 6 pm	WED	3	27,038	FRI	12	20,990	22,473	.93
US 54	KELLOGG E. OF WEST ST.	SEDGWICK	87,950	85,484	89,359	1.6	4.5	9,364	4- 5 pm	THU	11	114,652	FRI	19	89,359	96,366	.93
13TH ST.	13TH ST W. OF PINECREST	SEDGWICK	11,899	12,139	13,032	9.5	7.4	1,573	5- 6 pm	TUE	9	16,132	FRI	12	13,032	14,037	.93
ROCK RD.	ROCK RD. S. OF CENTRAL AVE	SEDGWICK	33,943	34,021	34,238	0.9	0.6	3,544	1- 2 pm	MON	22	42,617	FRI	19	34,238	34,912	.98
21ST ST.	21ST ST E. OF WASHINGTON	SEDGWICK	12,098	11,084	11,392	- 5.8	2.8	1,302	5- 6 pm	FRI	5	14,463	FRI	12	11,392	12,224	.93
HILLSIDE ST.	HILLSIDE S. OF 15TH ST	SEDGWICK	9,683	8,997	9,582	- 1.0	6.5	1,509	5- 6 pm	TUE	9	13,419	TUE	9	9,582	10,570	.91
I 235	I 235 S. OF MAPLE ST	SEDGWICK	44,608	41,853	46,140	3.4	10.2	5,326	5- 6 pm	TUE	16	58,024	FRI	19	46,140	49,759	.93
I 135	I-135 N. OF 21ST ST.	SEDGWICK	56,241	60,664	62,466	11.1	3.0	7,217	7- 8 am	THU	11	82,060	FRI	19	62,466	69,067	.90

Percent of Change for Wichita Stations

3.4 3.9

NOTE: \* Excluded from Percent Change Totals