

**KANSAS DEPARTMENT OF TRANSPORTATION
BUREAU OF TRANSPORTATION PLANNING**

OCTOBER 2014

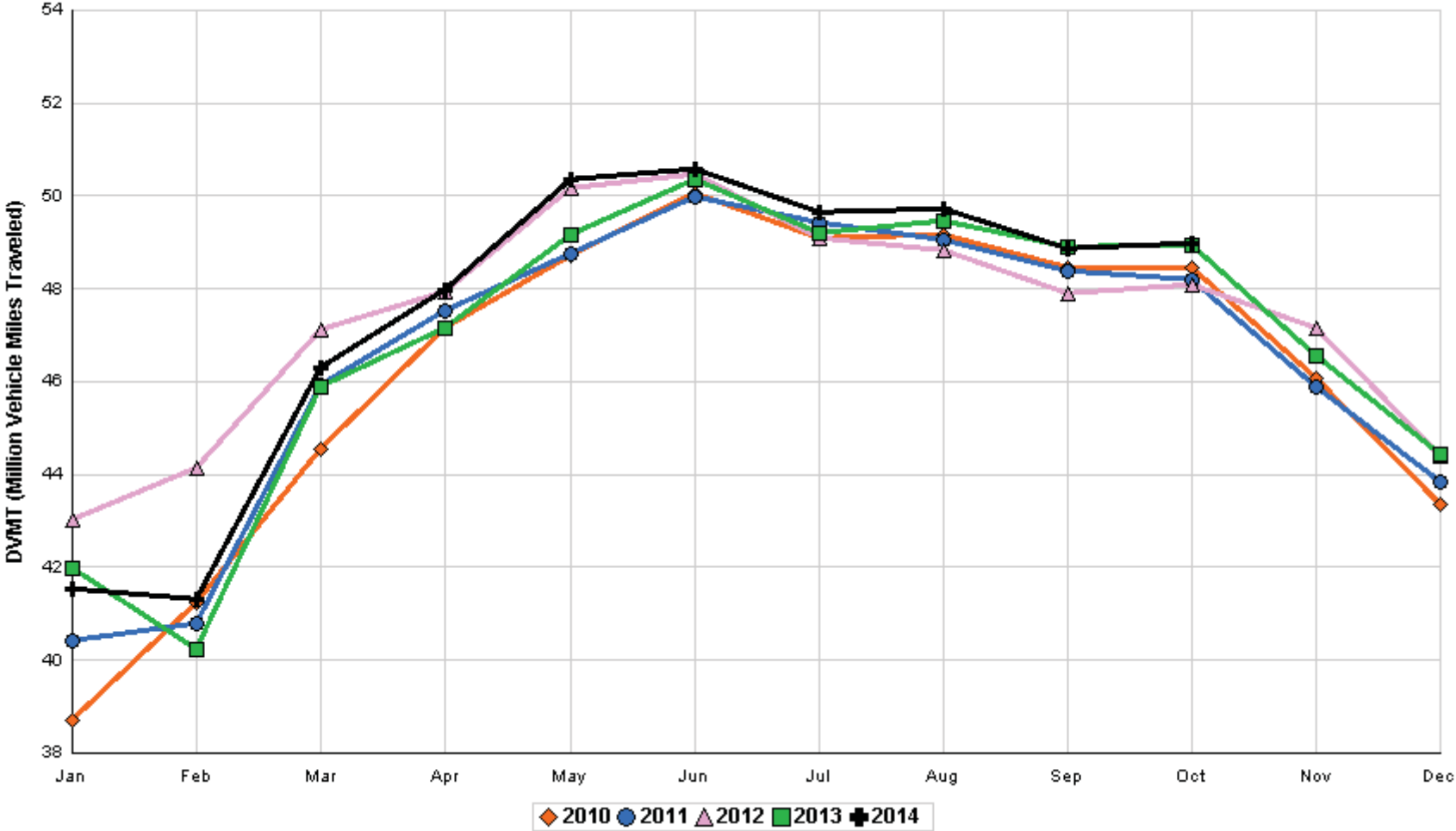
SIGNIFICANT FACTS AND TRENDS



Travel on the Kansas State Highway System				
	Daily Vehicle Miles		% Change	
	(In Millions)		2013 to 2014	
Month	2013	2014	Month	Year
Jan	41.967	41.540	- 1.0	- 1.0
Feb	40.249	41.322	2.7	0.8
Mar	45.891	46.309	0.9	0.8
Apr	47.138	47.954	1.7	1.1
May	49.171	50.335	2.4	1.4
Jun	50.352	50.563	0.4	1.2
Jul	49.184	49.647	0.9	1.1
Aug	49.468	49.706	0.5	1.1
Sep	48.898	48.856	- 0.1	0.9
Oct	48.938	48.967	0.1	0.8
Nov	46.540			
Dec	44.445			
Average	46.853			

**Contact the Traffic and Field Operations Unit with questions or requests at:
(785)-296-3841 or E-mail: TrafficCounts@ksdot.org
The Monthly Average Daily Traffic (MADT) is Calculated Utilizing the
Day-Of-Week (DOW) Method. Missing Traffic Count Data will Not be Estimated
Therefore Station Summary Data will be Blank where Data is Not Available.**

Total Travel on Kansas State Highway System 2010 - 2014



Month of October, 2014

Sparse Matrix Model

Date: 17-NOV-2014

Route Description	Location Description	County	Average Daily Traffic for the Month			Percent Change Month		Maximum Hour				Maximum Day			7 Day Avg	5 Day Avg	7 Day / 5 Day Avg
			2012	2013	2014	2012	2013	Volume	Hour	DOW	Day	Volume	DOW	Day			
Rural State Highways for District 1																	
US-75	1.2 MILES N. OF US-36 I.C.	BROWN	3,744	3,910	4,196	12.1	7.3	432	4- 5 pm	FRI	24	5,168	FRI	17	4,196	4,375	.96
US 24	1.5 MILES N.E. OF LAWRENCE	DOUGLAS	6,576	6,733	6,937	5.5	3.0	786	4- 5 pm	FRI	31	7,896	FRI	3	6,937	7,127	.97
US 56	4 MILES E. OF OVERBROOK	DOUGLAS	2,032	2,179	2,130	4.8	- 2.2	326	9-10 am	SAT	18	3,290	SAT	18	2,130	2,059	1.03
US 75	5.8 MILES N. OF HOLTON	JACKSON	5,686	5,705	6,247	9.9	9.5	678	5- 6 pm	FRI	3	7,690	FRI	10	6,247	6,365	.98
K 10	0.2 MILES E. OF RS. 346 INTCHG.	JOHNSON	32,265	33,657	31,043	- 3.8	- 7.8	3,323	5- 6 pm	FRI	3	35,955	FRI	3	31,043	32,150	.97
K 99	2.9 MILES S. OF EMPORIA	LYON	3,781	3,874	3,887	2.8	0.3	463	7- 8 am	MON	20	4,675	FRI	31	3,887	4,115	.94
US 36	13 MILES E. OF MARYSVILLE	MARSHALL	2,464	2,423	2,273	- 7.8	- 6.2	233	4- 5 pm	TUE	14	2,736	FRI	17	2,273	2,366	.96
K 68	0.15 MILES E. OF JCT K 268	OSAGE	2,528	2,117	2,503	- 1.0	18.2	299	4- 5 pm	FRI	17	3,022	FRI	17	2,503	2,474	1.01
K 268	0.1 MILES E. OF US 75	OSAGE	2,724														
K 18	0.7 MILES N.E. OF OGDEN	RILEY			23,453			2,825	9-10 am	SAT	25	29,035	FRI	3	23,453	24,450	.96
US 24	4 MILES N. OF MANHATTAN	RILEY	6,970	6,703	7,103	1.9	6.0	814	5- 6 pm	FRI	3	8,652	FRI	24	7,103	6,981	1.02
US 24	1 MILE N.W. OF ROSSVILLE	SHAWNEE	4,055	4,874	4,506	11.1	- 7.6	591	5- 6 pm	WED	8	5,536	FRI	3	4,506	4,795	.94
I 70	4.7 MILES E. OF K 30 INTCHG. (MAPLE HILL)	WABAUNSEE	20,666	20,814	21,465	3.9	3.1	2,739	3- 4 pm	SAT	25	28,216	SAT	25	21,465	20,286	1.06

Percent of Change for District 1 Stations

1.7 - .8

Rural State Highways for District 2

K 9	5.8 MILES E. OF CLIFTON	CLAY	364	363	401	10.2	10.5	43	1- 2 pm	THU	2	474	THU	2	401	429	.93
K 15	3.3 MILES N. OF CLAY CENTER	CLAY	1,857	1,854	1,979	6.6	6.7	229	5- 6 pm	TUE	14	2,399	FRI	24	1,979	2,141	.92
I 70	W. OF K-232 INTCHG. (WILSON)	ELLSWORTH		10,264	11,160		8.7	1,100	4- 5 pm	SUN	26	13,468	FRI	24	11,160	10,839	1.03
K 141	2.8 MILES S. OF KANOPOLIS DAM	ELLSWORTH	405	502	431	6.4	- 14.1	77	12- 1 pm	SUN	19	691	SAT	25	431	388	1.11
K 18	1.8 MILES W. OF JUNCTION CITY	GEARY	1,348	1,527	1,328	- 1.5	- 13.0	210	7- 8 am	TUE	28	1,574	FRI	24	1,328	1,415	.94
I 70	4.5 MILES S.W. OF JUNCTION CITY	GEARY	16,167	16,249	17,223	6.5	6.0	1,955	3- 4 pm	SAT	25	20,929	SAT	4	17,223	16,813	1.02
US 77	4 MILES S. OF JUNCTION CITY	GEARY	3,946	3,957	3,373	- 14.5	- 14.8	500	4- 5 pm	FRI	24	4,484	SAT	25	3,373	3,329	1.01
US 36	1 MILE E. OF MANKATO	JEWELL	1,801	1,874	1,855	3.0	- 1.0	211	4- 5 pm	FRI	24	2,351	FRI	17	1,855	1,979	.94
K 18	0.5 MILES W. OF LINCOLN	LINCOLN	1,020	995	1,065	4.4	7.0	130	4- 5 pm	THU	16	1,316	THU	9	1,065	1,145	.93
I 135	0.5 MILES N. OF US 56 INTCHG. (MCPHERSON)	MCPHERSON	12,591	13,006	13,784	9.5	6.0	1,534	5- 6 pm	FRI	17	17,063	FRI	17	13,784	13,470	1.02
K 14	3 MILES S. OF BELOIT	MITCHELL	843	907	884	4.9	- 2.5	114	4- 5 pm	FRI	17	1,095	THU	2	884	964	.92
US 81	2.5 MILES S. OF BELLEVILLE	REPUBLIC	4,829	4,946	5,066	4.9	2.4	509	5- 6 pm	FRI	17	6,199	FRI	17	5,066	5,165	.98

Percent of Change for District 2 Stations

4.9 3.7

Rural State Highways for District 3

US 83	6.2 MILES S. OF OAKLEY	LOGAN	1,881	1,833	2,027	7.8	10.6	216	10-11 am	MON	20	2,492	FRI	17	2,027	2,184	.93
US 36	9.5 MILES W. OF NORTON	NORTON	945	944	1,008	6.7	6.8	118	4- 5 pm	FRI	17	1,214	FRI	24	1,008	1,072	.94
US 183	1.2 MILES S. OF PHILLIPSBURG	PHILLIPS	2,202	2,203	2,321	5.4	5.4	270	4- 5 pm	FRI	17	2,778	FRI	3	2,321	2,430	.96
K 23	14.5 MILES S. OF HOXIE	SHERIDAN	879	862	772	- 12.2	- 10.4	100	11-12 pm	SAT	11	911	THU	9	772	826	.93
I 70	2.2 MI. E OF KANORADO EXIT	SHERMAN	6,978	7,629	8,420	20.7	10.4	878	1- 2 pm	SUN	5	10,060	FRI	3	8,420	8,376	1.01
US 24	7.3 MILES E. OF COLBY	THOMAS	1,791	1,832	1,989	11.1	8.6	206	3- 4 pm	THU	2	2,460	THU	2	1,989	2,111	.94
K 25	1.8 MILES S. OF COLBY	THOMAS	803	737	754	- 6.1	2.3	83	9-10 am	WED	15	901	THU	2	754	837	.90
I 70	1 MILE W. OF WAKEENEY	TREGO	8,772	9,089	9,899	12.8	8.9	1,028	2- 3 pm	SUN	19	11,566	FRI	10	9,899	9,914	1.00
US 40	1.4 MILES E. OF KAN-COLO ST. LINE	WALLACE	520	526	533	2.5	1.3	63	3- 4 pm	THU	30	687	THU	30	533	585	.91

Percent of Change for District 3 Stations

11.9 8.1

Month of October, 2014

Sparse Matrix Model

Date: 17-NOV-2014

---- Average Daily Traffic ----
for the Month

Percent Change
Month

---- Maximum Hour ----
Volume Hour DOW Day

--- Maximum Day ---
Volume DOW Day

7 Day Avg
5 Day Avg
7 Day / 5 Day Avg

Route Description Location Description County

2012 2013 2014 2012 2013

Rural State Highways for District 4

US 54	3 MILES W. OF IOLA	ALLEN	2,781	2,908	2,831	1.8	- 2.6	301	3- 4 pm	FRI	3	3,550	FRI	3	2,831	2,950	.96
US 169	1 MILE N. OF GREELEY	ANDERSON		3,342	3,186		- 4.7	361	4- 5 pm	FRI	17	3,940	FRI	17	3,186	3,263	.98
US 69	2 MILES N. OF FT SCOTT	BOURBON		6,688	6,630		- 0.9	732	4- 5 pm	FRI	24	7,934	FRI	3	6,630	6,523	1.02
US 166	0.5 MILES W. OF NIOTAZE	CHAUTAUQUA	2,493	2,459	2,496	0.1	1.5	272	5- 6 pm	FRI	17	3,122	FRI	17	2,496	2,549	.98
I 35	2 MILES W. OF K- 131 INTCHG. N. OF LEBO	COFFEY	12,846	13,713	13,786	7.3	0.5	1,599	5- 6 pm	SUN	26	17,111	FRI	17	13,786	13,480	1.02
US 59	4.3 MILES S. OF OTTAWA	FRANKLIN	6,009	6,034	6,390	6.3	5.9	705	5- 6 pm	FRI	10	7,663	FRI	3	6,390	6,541	.98
I 35	2 MILES N.E. OF THE WELLSVILLE INTCHG.	FRANKLIN	20,186	20,822	20,721	2.7	- 0.5	2,201	4- 5 pm	FRI	3	25,130	FRI	17	20,721	20,984	.99
US 400	3 MILES E. OF PARSONS	LABETTE	3,582	3,853	3,887	8.5	0.9	422	4- 5 pm	FRI	10	4,832	FRI	17	3,887	3,941	.99
US 59	4 MILES S. OF ERIE	NEOSHO	2,935	3,054	3,067	4.5	0.4	344	5- 6 pm	THU	23	3,806	FRI	3	3,067	3,358	.91
US 169	1 MILE N. OF THAYER	NEOSHO	4,124	4,639	4,182	1.4	- 9.9	526	5- 6 pm	FRI	3	5,323	FRI	3	4,182	4,385	.95
US 75	1 MILE N. OF YATES CENTER	WOODSON	2,672	2,736	2,726	2.0	- 0.4	319	5- 6 pm	FRI	24	3,569	FRI	3	2,726	2,786	.98
K 105	2 MILES N. OF TORONTO	WOODSON	607	577	545	- 10.2	- 5.5	72	1- 2 pm	SUN	5	693	SAT	18	545	525	1.04

4.1 - .5

Percent of Change for District 4 Stations

Rural State Highways for District 5

US 56	5.5 MILES E. OF GREAT BEND	BARTON	5,049	5,307	5,412	7.2	2.0	609	5- 6 pm	FRI	17	6,564	FRI	17	5,412	5,788	.94
US 77	2 MILES N. OF EL DORADO	BUTLER	2,770	2,875	2,847	2.8	- 1.0	375	1- 2 pm	SUN	19	3,751	SAT	18	2,847	2,679	1.06
US 400	1.5 MILES E. OF LEON	BUTLER	4,639	4,963	4,575	- 1.4	- 7.8	475	4- 5 pm	FRI	17	5,993	FRI	10	4,575	4,553	1.00
US 77	3.7 MILES N. OF ARKANSAS CITY	COWLEY	10,765	11,050	10,969	1.9	- 0.7	1,180	3- 4 pm	FRI	17	13,237	FRI	17	10,969	11,803	.93
US 160	6.2 MILES E. OF ATTICA	HARPER	1,507	1,568	1,438	- 4.6	- 8.3	173	6- 7 pm	FRI	24	1,815	FRI	24	1,438	1,527	.94
US 50	3 MILES N.E. OF NEWTON	HARVEY	6,344	6,418	6,076	- 4.2	- 5.3	638	4- 5 pm	FRI	17	7,123	FRI	24	6,076	6,114	.99
US 54	14 MILES W. OF KINGMAN	KINGMAN	5,336	4,907	5,039	- 5.6	2.7	527	4- 5 pm	FRI	17	6,174	FRI	17	5,039	5,144	.98
US 54	1.5 MILES W. OF HAVILAND	KIOWA	5,302	5,350	5,210	- 1.7	- 2.6	502	3- 4 pm	FRI	24	6,247	FRI	24	5,210	5,363	.97
US 183	7 MILES S. OF GREENSBURG	KIOWA	1,018	952	1,002	- 1.6	5.3	134	6- 7 pm	FRI	3	1,280	FRI	3	1,002	1,089	.92
US 56	5 MILES S.W. OF LARNED	PAWNEE	2,203	2,222	2,254	2.3	1.4	238	4- 5 pm	FRI	24	2,616	FRI	3	2,254	2,328	.97
K 61	5 MILES S.W. OF ARLINGTON	RENO	2,115	2,155	2,099	- 0.8	- 2.6	216	2- 3 pm	FRI	24	2,387	FRI	24	2,099	2,160	.97
K 14	1 MILE N. OF LYONS	RICE	1,376	1,329	1,436	4.4	8.1	164	5- 6 pm	THU	30	1,722	FRI	24	1,436	1,533	.94
K 42	3 MILES N.E. OF VIOLA	SEDGWICK	4,561	4,613	4,636	1.6	0.5	526	4- 5 pm	FRI	3	5,582	FRI	17	4,636	4,964	.93
US 281	0.5 MILES S. OF ST. JOHN	STAFFORD	2,403	2,470	2,598	8.1	5.2	303	4- 5 pm	FRI	3	3,183	FRI	3	2,598	2,802	.93
US 81	4.1 MILES S. OF WELLINGTON	SUMNER	1,793	1,613	1,804	0.6	11.8	195	5- 6 pm	FRI	17	2,072	THU	16	1,804	1,880	.96

.4 - .7

Percent of Change for District 5 Stations

Rural State Highways for District 6

US 83	8.2 MILES S. OF GARDEN CITY	FINNEY	4,215	4,404	4,671	10.8	6.1	461	5- 6 pm	FRI	17	5,367	FRI	17	4,671	4,860	.96
US 50	4.5 MILES W. OF DODGE CITY	FORD	6,507	5,800	5,784	- 11.1	- 0.3	528	5- 6 pm	THU	23	6,736	FRI	24	5,784	6,076	.95
US 400	4.5 MILES W. OF DODGE CITY	FORD	1,177	1,128	1,135	- 3.6	0.6	121	11-12 pm	THU	16	1,437	THU	16	1,135	1,264	.90
K 25	2.5 MILES N. OF ULYSSES	GRANT	1,508	1,719	1,543	2.3	- 10.2	166	4- 5 pm	THU	2	1,905	THU	16	1,543	1,681	.92
K 27	15 MILES N OF TRIBUNE	GREELEY	681	719	749	10.0	4.2	94	2- 3 pm	THU	9	912	FRI	31	749	831	.90
US 50	0.8 MILES E. OF KAN-COLO ST. LINE	HAMILTON	1,524	1,517	1,524	0.0	0.5	154	3- 4 pm	FRI	17	1,876	FRI	3	1,524	1,548	.98
US 283	8.3 MILES N. OF JETMORE	HODGEMAN	1,010	890	933	- 7.6	4.8	133	6- 7 pm	FRI	3	1,289	FRI	3	933	1,013	.92
US 54	3.7 MILES W. OF MEADE	MEADE	3,793	3,942	3,907	3.0	- 0.9	335	4- 5 pm	FRI	17	4,400	FRI	17	3,907	4,018	.97
K 96	12 MILES W. OF SCOTT CITY	WICHITA	1,270	1,281	1,306	2.8	2.0	145	5- 6 pm	WED	1	1,656	FRI	17	1,306	1,428	.91

- .6 .7

Percent of Change for District 6 Stations

Month of October, 2014

Sparse Matrix Model

Date: 17-NOV-2014

---- Average Daily Traffic ----
for the Month

Percent Change
Month

---- Maximum Hour ----
Volume Hour DOW Day

--- Maximum Day ---
Volume DOW Day

7 Day Avg
5 Day Avg
7 Day / 5 Day Avg

Route Description Location Description County

2012 2013 2014 2012 2013

Rural Secondary Stations

RS 61	6.5 MILES S.W. OF HIAWATHA	BROWN	218	271	282	29.4	4.1	50	10-11 am	MON	13	351	FRI	31	282	302	.93
RS 463	2.5 MILES S.W. OF BELOIT	MITCHELL	255	267	279	9.4	4.5	42	4- 5 pm	WED	15	371	THU	16	279	303	.92
RS 272	2 MILES S. OF QUINTER	GOVE	352	370	383	8.8	3.5	50	5- 6 pm	TUE	28	469	FRI	31	383	398	.96
RS 13	0.5 MILES N. OF BUSH CITY	ANDERSON	312	477	346	10.9	- 27.5	47	7- 8 am	WED	1	426	TUE	21	346	372	.93
RS 2316	3 MILES E. OF PARSONS	LABETTE	1,832	1,796	1,884	2.8	4.9	214	5- 6 pm	FRI	3	2,431	FRI	24	1,884	2,042	.92
RS 303	0.8 MI. S. OF US-54 & K17 JCT. (MIDWAY)	KINGMAN	295	323	382	29.5	18.3	69	7- 8 am	WED	1	500	SAT	18	382	392	.97
RS 251	6 MILES W. OF FORD	FORD	467	490	543	16.3	10.8	73	4- 5 pm	WED	1	680	WED	1	543	574	.95

Percent of Change for Rural Secondary Stations

9.9 2.6

Reservoir Stations

K 237	1.5 MILES N. OF JCT. US 24	JEFFERSON	1,070	1,119	1,142	6.7	2.1	148	11-12 pm	SUN	19	1,467	SAT	18	1,142	1,095	1.04
LOCAL ROAD	KANOPOLIS RESERVOIR N. OF DAM	ELLSWORTH	107	140	87	- 18.7	- 37.9					191	SAT	25	87	69	1.26
LOCAL ROAD	KANOPOLIS RESERVOIR S. OF DAM	ELLSWORTH	150	127	173	15.3	36.2					565	SAT	25	173	117	1.48
LOCAL ROAD	CEDAR BLUFF RESERVOIR N. OF DAM	TREGO	76	99	54	- 28.9	- 45.5					191	SUN	19	54	35	1.54

Percent of Change for Reservoir Stations

3.8 - 2.0

Kansas City Stations

US-69	0.4 MILES S. OF 135TH ST.	JOHNSON		53,649	53,546		- 0.2	5,564	4- 5 pm	FRI	3	60,615	FRI	17	53,546	55,674	.96
135TH	135TH E. OF MUR-LEN	JOHNSON	34,117	36,211	34,348	0.7	- 5.1	3,360	4- 5 pm	FRI	31	38,834	FRI	17	34,348	35,984	.95
BLACKBOB	BLACKBOB RD. S. OF 139TH	JOHNSON	21,224	20,843	21,992	3.6	5.5	2,304	4- 5 pm	FRI	31	24,584	SAT	4	21,992	22,115	.99
I 435	0.8 MILES S. OF I - 70	WYANDOTTE	63,107	66,566	68,191	8.1	2.4	8,116	5- 6 pm	FRI	3	83,900	FRI	3	68,191	71,217	.96

Percent of Change for Kansas City Stations

5.1 .5

Salina Stations

OHIO ST.	OHIO ST. N. OF WESTCHESTER DR.	SALINE	17,070	17,247	17,700	3.7	2.6	1,810	5- 6 pm	TUE	21	21,954	FRI	31	17,700	19,462	.91
----------	--------------------------------	--------	--------	--------	--------	-----	-----	-------	---------	-----	----	--------	-----	----	--------	--------	-----

Percent of Change for Salina Stations

3.7 2.6

Topeka Stations

45TH ST.	45TH ST. E. OF INDIANA	SHAWNEE	7,884	2,859													
N. TOPEKA	TOPEKA BLVD. NORTH OF PARAMORE ST.	SHAWNEE		16,355	18,069		10.5	1,932	4- 5 pm	WED	15	22,424	FRI	3	18,069	19,820	.91
I 70	I 70 E. OF MACVICAR ST.	SHAWNEE		47,041	40,470		- 14.0	3,956	4- 5 pm	FRI	10	47,658	FRI	24	40,470	42,539	.95
I 470	I 470 N.W. OF HUNTOON	SHAWNEE	32,347	33,687	34,392	6.3	2.1	3,739	4- 5 pm	FRI	10	40,957	FRI	17	34,392	36,422	.94
US 40	US 40 E. OF TECUMSEH RD.	SHAWNEE	4,881	4,799	4,585	- 6.1	- 4.5	591	5- 6 pm	WED	22	5,368	FRI	3	4,585	4,970	.92
US 75	US 75 N. OF S.W. 57TH	SHAWNEE	15,599	14,280	14,099	- 9.6	- 1.3	1,650	7- 8 am	WED	15	17,082	FRI	17	14,099	15,328	.92
K 4	1MI. S. OF JCT. US-24	SHAWNEE	9,235	8,938	9,352	1.3	4.6	1,109	4- 5 pm	THU	30	11,252	FRI	17	9,352	9,933	.94

Percent of Change for Topeka Stations

.6 - 3.3

Month of October, 2014

Sparse Matrix Model

Date: 17-NOV-2014

---- Average Daily Traffic ----			Percent Change		---- Maximum Hour ----				--- Maximum Day ---			7 Day	5 Day	7 Day /	
for the Month			Month		Volume	Hour	DOW	Day	Volume	DOW	Day	Avg	Avg	5 Day	Avg
2012	2013	2014	2012	2013											

Route Description	Location Description	County
-------------------	----------------------	--------

Wichita Stations

K 96	K-96 E. OF GREENWICH RD.	SEDGWICK	23,367	23,749	23,289	- 0.3	- 1.9	2,636	5- 6 pm	THU	9	27,156	FRI	17	23,289	25,211	.92
US 54	KELLOGG E. OF WEST ST.	SEDGWICK	93,024	92,844	92,837	- 0.2	0.0	9,131	4- 5 pm	FRI	17	111,297	FRI	17	92,837	101,666	.91
13TH ST.	13TH ST W. OF PINECREST	SEDGWICK	13,498	12,112	14,088	4.4	16.3	1,607	5- 6 pm	WED	1	16,915	FRI	31	14,088	15,331	.92
ROCK RD.	ROCK RD. S. OF CENTRAL AVE	SEDGWICK	31,815	32,216	31,815	0.0	- 1.2	3,143	3- 4 pm	FRI	17	37,831	FRI	17	31,815	33,094	.96
21ST ST.	21ST ST E. OF WASHINGTON	SEDGWICK	13,465	12,858	12,585	- 6.5	- 2.1	1,441	4- 5 pm	FRI	17	15,178	FRI	17	12,585	13,432	.94
HILLSIDE ST.	HILLSIDE S. OF 15TH ST	SEDGWICK	12,132	10,291	11,794	- 2.8	14.6	1,287	5- 6 pm	THU	16	14,252	THU	16	11,794	13,215	.89
I 235	I 235 S. OF MAPLE ST	SEDGWICK	47,988	47,488	45,757	- 4.6	- 3.6	4,836	5- 6 pm	FRI	3	54,271	FRI	17	45,757	49,138	.93
I 135	I-135 N. OF 21ST ST.	SEDGWICK	67,435	69,283	70,286	4.2	1.4	7,452	7- 8 am	WED	1	85,422	FRI	17	70,286	79,029	.89

Percent of Change for Wichita Stations

- .1 .5

NOTE: * Excluded from Percent Change Totals