

**KANSAS DEPARTMENT OF TRANSPORTATION
BUREAU OF TRANSPORTATION PLANNING**

SEPTEMBER 2014

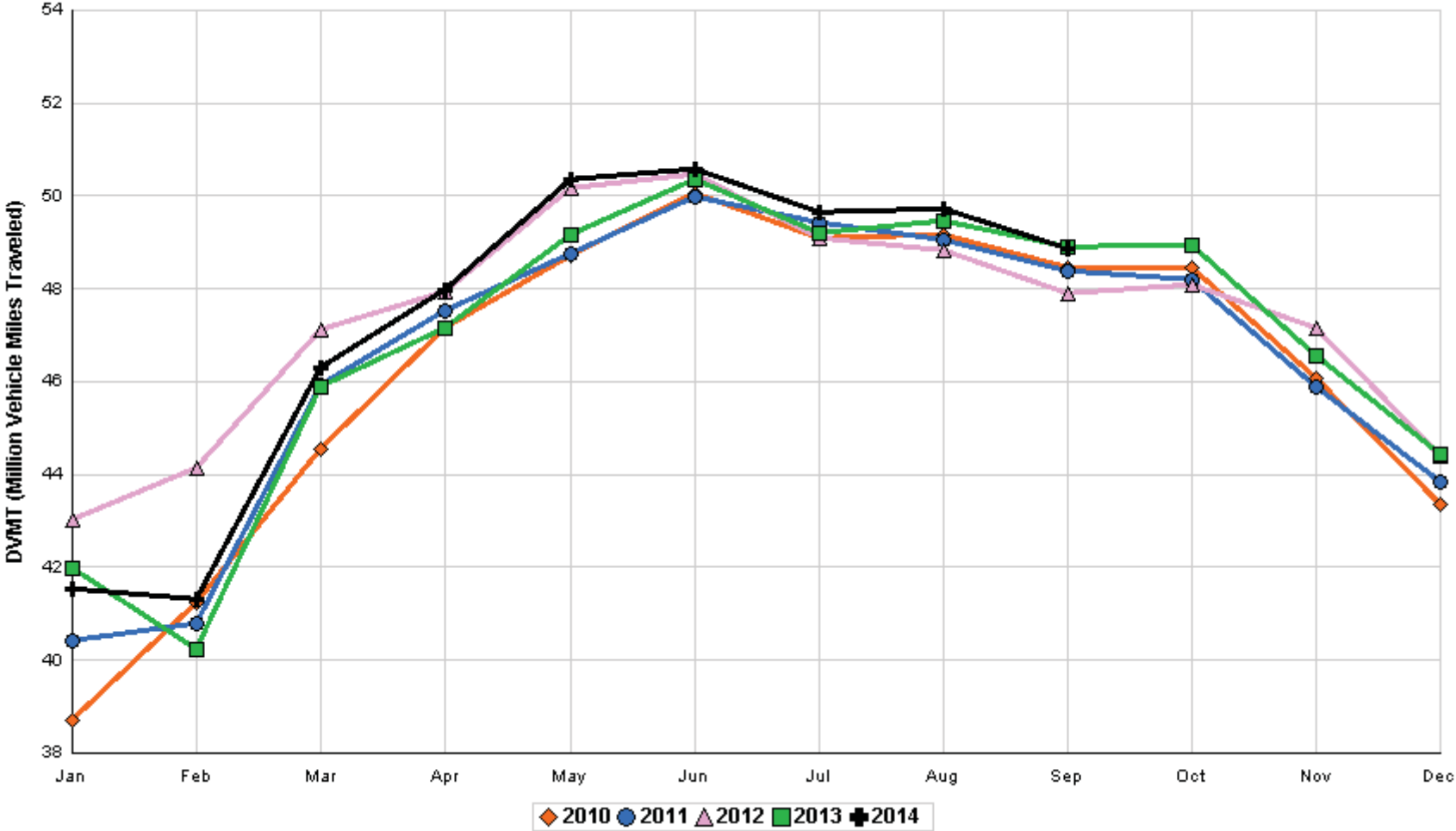
SIGNIFICANT FACTS AND TRENDS



Travel on the Kansas State Highway System				
	Daily Vehicle Miles		% Change	
	(In Millions)		2013 to 2014	
Month	2013	2014	Month	Year
Jan	41.967	41.540	- 1.0	- 1.0
Feb	40.249	41.322	2.7	0.8
Mar	45.891	46.309	0.9	0.8
Apr	47.138	47.954	1.7	1.1
May	49.171	50.335	2.4	1.4
Jun	50.352	50.563	0.4	1.2
Jul	49.184	49.647	0.9	1.1
Aug	49.468	49.706	0.5	1.1
Sep	48.898	48.856	- 0.1	0.9
Oct	48.938			
Nov	46.540			
Dec	44.445			
Average	46.853			

**Contact the Traffic and Field Operations Unit with questions or requests at:
(785)-296-3841 or E-mail: TrafficCounts@ksdot.org
The Monthly Average Daily Traffic (MADT) is Calculated Utilizing the
Day-Of-Week (DOW) Method. Missing Traffic Count Data will Not be Estimated
Therefore Station Summary Data will be Blank where Data is Not Available.**

Total Travel on Kansas State Highway System 2010 - 2014



Month of September, 2014

Sparse Matrix Model

Date: 23-OCT-2014

Route Description	Location Description	County	Average Daily Traffic for the Month			Percent Change Month		Maximum Hour				Maximum Day			7 Day Avg	5 Day Avg	7 Day / 5 Day Avg
			2012	2013	2014	2012	2013	Volume	Hour	DOW	Day	Volume	DOW	Day			
Rural State Highways for District 1																	
US-75	1.2 MILES N. OF US-36 I.C.	BROWN	3,751	3,897	4,184	11.5	7.4	448	5- 6 pm	FRI	19	5,394	FRI	19	4,184	4,350	.96
US 24	1.5 MILES N.E. OF LAWRENCE	DOUGLAS	6,720	6,883	7,362	9.6	7.0	810	5- 6 pm	FRI	19	8,719	SAT	6	7,362	7,401	.99
US 56	4 MILES E. OF OVERBROOK	DOUGLAS	2,082	2,072	2,093	0.5	1.0	241	4- 5 pm	THU	11	2,480	FRI	26	2,093	2,078	1.01
US 75	5.8 MILES N. OF HOLTON	JACKSON	5,835	5,913	6,128	5.0	3.6	654	4- 5 pm	FRI	26	7,528	FRI	19	6,128	6,272	.98
K 10	0.2 MILES E. OF RS. 346 INTCHG.	JOHNSON	32,087	33,160	32,537	1.4	- 1.9	3,542	5- 6 pm	FRI	12	38,407	FRI	19	32,537	33,475	.97
K 99	2.9 MILES S. OF EMPORIA	LYON	3,787	3,990	3,861	2.0	- 3.2	459	7- 8 am	WED	3	4,821	FRI	26	3,861	4,086	.94
US 36	13 MILES E. OF MARYSVILLE	MARSHALL	2,511	2,531	2,374	- 5.5	- 6.2	304	4- 5 pm	FRI	19	3,386	FRI	19	2,374	2,461	.96
K 68	0.15 MILES E. OF JCT K 268	OSAGE	2,698	2,258	2,617	- 3.0	15.9	303	5- 6 pm	FRI	12	3,354	SAT	20	2,617	2,575	1.02
K 268	0.1 MILES E. OF US 75	OSAGE	2,835														
K 18	0.7 MILES N.E. OF OGDEN	RILEY			23,056			2,836	4- 5 pm	FRI	12	30,040	THU	18	23,056	24,646	.94
US 24	4 MILES N. OF MANHATTAN	RILEY	7,166	7,136	7,342	2.5	2.9	819	5- 6 pm	FRI	19	8,916	FRI	19	7,342	7,267	1.01
US 24	1 MILE N.W. OF ROSSVILLE	SHAWNEE	4,329	4,503	4,735	9.4	5.2	630	5- 6 pm	FRI	19	6,006	THU	18	4,735	5,090	.93
I 70	4.7 MILES E. OF K 30 INTCHG. (MAPLE HILL)	WABAUNSEE	20,913	21,236	21,699	3.8	2.2	2,562	8- 9 am	SAT	27	29,794	SAT	27	21,699	20,930	1.04

Percent of Change for District 1 Stations

3.3 1.4

Rural State Highways for District 2

K 9	5.8 MILES E. OF CLIFTON	CLAY	359	359	347	- 3.3	- 3.3	45	6- 7 pm	FRI	12	437	FRI	5	347	379	.92
K 15	3.3 MILES N. OF CLAY CENTER	CLAY	1,883	1,901	1,993	5.8	4.8	251	5- 6 pm	FRI	26	2,525	FRI	26	1,993	2,134	.93
I 70	W. OF K-232 INTCHG. (WILSON)	ELLSWORTH		10,769	11,419		6.0	1,604	3- 4 pm	MON	1	16,416	MON	1	11,419	11,251	1.01
K 141	2.8 MILES S. OF KANOPOLIS DAM	ELLSWORTH	495	552	467	- 5.7	- 15.4	113	12- 1 pm	MON	1	989	MON	1	467	422	1.11
K 18	1.8 MILES W. OF JUNCTION CITY	GEARY	1,343	1,533	1,362	1.4	- 11.2	199	7- 8 am	FRI	5	1,616	FRI	19	1,362	1,465	.93
I 70	4.5 MILES S.W. OF JUNCTION CITY	GEARY	16,652	16,728	17,589	5.6	5.1	1,947	3- 4 pm	THU	18	22,186	THU	18	17,589	17,453	1.01
US 77	4 MILES S. OF JUNCTION CITY	GEARY	3,832	3,971	3,552	- 7.3	- 10.6	443	4- 5 pm	FRI	5	4,545	FRI	19	3,552	3,597	.99
US 36	1 MILE E. OF MANKATO	JEWELL	1,872	1,953	1,926	2.9	- 1.4	251	5- 6 pm	FRI	19	2,841	FRI	19	1,926	2,033	.95
K 18	0.5 MILES W. OF LINCOLN	LINCOLN	1,054	999	1,093	3.7	9.4	180	10-11 am	SAT	27	1,551	SAT	27	1,093	1,162	.94
I 135	0.5 MILES N. OF US 56 INTCHG. (MCPHERSON)	MCPHERSON	12,736	13,521	14,053	10.3	3.9	1,516	5- 6 pm	FRI	26	17,323	FRI	19	14,053	13,692	1.03
K 14	3 MILES S. OF BELOIT	MITCHELL	840	861	850	1.2	- 1.3	116	1- 2 pm	SUN	21	1,069	FRI	19	850	919	.92
US 81	2.5 MILES S. OF BELLEVILLE	REPUBLIC	4,827	5,028	5,055	4.7	0.5	541	4- 5 pm	MON	1	6,463	FRI	19	5,055	5,111	.99

Percent of Change for District 2 Stations

5.2 2.6

Rural State Highways for District 3

US 83	6.2 MILES S. OF OAKLEY	LOGAN	1,930	1,782	1,964	1.8	10.2	210	8- 9 am	SAT	27	2,490	FRI	26	1,964	2,096	.94
US 36	9.5 MILES W. OF NORTON	NORTON	1,052	1,027	1,101	4.7	7.2	145	4- 5 pm	FRI	19	1,447	FRI	19	1,101	1,183	.93
US 183	1.2 MILES S. OF PHILLIPSBURG	PHILLIPS	2,369	2,241	2,311	- 2.4	3.1	246	4- 5 pm	FRI	26	2,858	FRI	19	2,311	2,475	.93
K 23	14.5 MILES S. OF HOXIE	SHERIDAN	852	816	700	- 17.8	- 14.2	81	4- 5 pm	THU	25	899	SAT	27	700	750	.93
I 70	2.2 MI. E OF KANORADO EXIT	SHERMAN	8,169	9,439	9,152	12.0	- 3.0	1,358	1- 2 pm	MON	1	13,902	MON	1	9,152	9,101	1.01
US 24	7.3 MILES E. OF COLBY	THOMAS	1,882	1,941	2,021	7.4	4.1	239	5- 6 pm	FRI	26	2,421	FRI	26	2,021	2,146	.94
K 25	1.8 MILES S. OF COLBY	THOMAS	859	788	787	- 8.4	- 0.1	93	8- 9 am	WED	24	957	FRI	5	787	865	.91
I 70	1 MILE W. OF WAKEENEY	TREGO	9,179	9,473	10,393	13.2	9.7	1,468	2- 3 pm	MON	1	14,423	MON	1	10,393	10,419	1.00
US 40	1.4 MILES E. OF KAN-COLO ST. LINE	WALLACE	567	539	558	- 1.6	3.5	64	4- 5 pm	THU	11	681	MON	15	558	605	.92

Percent of Change for District 3 Stations

7.9 3.4

Month of September, 2014

Sparse Matrix Model

Date: 23-OCT-2014

Route Description	Location Description	County	Average Daily Traffic for the Month			Percent Change Month		Maximum Hour				Maximum Day			7 Day Avg	5 Day Avg	7 Day / 5 Day Avg
			2012	2013	2014	2012	2013	Volume	Hour	DOW	Day	Volume	DOW	Day			

Rural State Highways for District 4

US 54	3 MILES W. OF IOLA	ALLEN	2,788	2,890	2,822	1.2	- 2.4	302	4- 5 pm	FRI	26	3,454	FRI	26	2,822	2,945	.96
US 169	1 MILE N. OF GREELEY	ANDERSON	3,109	3,322	3,059	- 1.6	- 7.9	339	5- 6 pm	FRI	26	3,670	FRI	12	3,059	3,129	.98
US 69	2 MILES N. OF FT SCOTT	BOURBON		6,343	6,417		1.2	742	10-11 am	SAT	27	8,206	FRI	26	6,417	6,383	1.01
US 166	0.5 MILES W. OF NIOTAZE	CHAUTAUQUA	2,515	2,457	2,506	- 0.4	2.0	300	4- 5 pm	FRI	12	3,136	FRI	19	2,506	2,570	.98
I 35	2 MILES W. OF K- 131 INTCHG. N. OF LEBO	COFFEY	12,527	13,384	13,574	8.4	1.4	1,482	3- 4 pm	MON	1	16,683	FRI	19	13,574	13,224	1.03
US 59	4.3 MILES S. OF OTTAWA	FRANKLIN	5,876	5,961	6,380	8.6	7.0	723	5- 6 pm	FRI	26	7,910	FRI	26	6,380	6,488	.98
I 35	2 MILES N.E. OF THE WELLSVILLE INTCHG.	FRANKLIN	19,696	20,431	20,980	6.5	2.7	2,246	4- 5 pm	FRI	19	25,130	FRI	19	20,980	21,092	.99
US 400	3 MILES E. OF PARSONS	LABETTE	3,699	3,923	4,011	8.4	2.2	584	2- 3 pm	MON	1	5,150	MON	1	4,011	4,097	.98
US 59	4 MILES S. OF ERIE	NEOSHO	2,949	3,058	3,133	6.2	2.5	343	4- 5 pm	MON	8	4,008	FRI	19	3,133	3,448	.91
US 169	1 MILE N. OF THAYER	NEOSHO	4,043	4,397	4,193	3.7	- 4.6	558	5- 6 pm	FRI	19	5,500	FRI	19	4,193	4,393	.95
US 75	1 MILE N. OF YATES CENTER	WOODSON	2,597	2,697	2,654	2.2	- 1.6	269	4- 5 pm	FRI	26	3,301	FRI	26	2,654	2,729	.97
K 105	2 MILES N. OF TORONTO	WOODSON	601	599	558	- 7.2	- 6.8	85	12- 1 pm	MON	1	794	SAT	20	558	551	1.01

5.7 1.2

Percent of Change for District 4 Stations

Rural State Highways for District 5

US 56	5.5 MILES E. OF GREAT BEND	BARTON	5,261	5,395	5,509	4.7	2.1	627	5- 6 pm	THU	11	6,692	THU	11	5,509	5,791	.95
US 77	2 MILES N. OF EL DORADO	BUTLER	2,695	2,841	2,781	3.2	- 2.1	385	1- 2 pm	SUN	21	3,523	SAT	20	2,781	2,718	1.02
US 400	1.5 MILES E. OF LEON	BUTLER		4,776	4,490		- 6.0	479	5- 6 pm	FRI	26	5,786	FRI	26	4,490	4,469	1.00
US 77	3.7 MILES N. OF ARKANSAS CITY	COWLEY	10,794	10,970	10,970	1.6	0.0	1,115	3- 4 pm	FRI	12	13,335	FRI	19	10,970	11,772	.93
US 160	6.2 MILES E. OF ATTICA	HARPER	1,579	1,643	1,458	- 7.7	- 11.3	204	6- 7 pm	FRI	26	1,921	FRI	26	1,458	1,560	.93
US 50	3 MILES N.E. OF NEWTON	HARVEY	6,409	6,538	6,301	- 1.7	- 3.6	786	8- 9 am	SAT	20	9,262	SAT	20	6,301	6,301	1.00
US 54	14 MILES W. OF KINGMAN	KINGMAN	5,241	4,765	5,101	- 2.7	7.1	515	5- 6 pm	FRI	19	6,283	FRI	19	5,101	5,262	.97
US 54	1.5 MILES W. OF HAVILAND	KIOWA	5,263	5,100	5,264	0.0	3.2	482	3- 4 pm	FRI	19	6,230	FRI	19	5,264	5,410	.97
US 183	7 MILES S. OF GREENSBURG	KIOWA	1,065	954	1,008	- 5.4	5.7	111	4- 5 pm	THU	11	1,249	FRI	5	1,008	1,102	.91
US 56	5 MILES S.W. OF LARNED	PAWNEE	2,124	2,115	2,212	4.1	4.6	231	5- 6 pm	FRI	19	2,630	FRI	19	2,212	2,320	.95
K 61	5 MILES S.W. OF ARLINGTON	RENO	2,077	2,201	2,175	4.7	- 1.2	232	10-11 am	SAT	13	2,733	SAT	13	2,175	2,202	.99
K 14	1 MILE N. OF LYONS	RICE	1,464	1,444	1,590	8.6	10.1	162	5- 6 pm	FRI	5	1,983	SAT	6	1,590	1,651	.96
K 42	3 MILES N.E. OF VIOLA	SEDGWICK	4,561	4,541	4,554	- 0.2	0.3	507	4- 5 pm	FRI	12	5,396	FRI	19	4,554	4,920	.93
US 281	0.5 MILES S. OF ST. JOHN	STAFFORD	2,391	2,587	2,643	10.5	2.2	298	3- 4 pm	THU	18	3,239	THU	18	2,643	2,836	.93
US 81	4.1 MILES S. OF WELLINGTON	SUMNER	1,739	1,665	1,786	2.7	7.3	193	5- 6 pm	THU	11	2,236	THU	11	1,786	1,868	.96

1.3 .5

Percent of Change for District 5 Stations

Rural State Highways for District 6

US 83	8.2 MILES S. OF GARDEN CITY	FINNEY	4,363	4,413	4,579	5.0	3.8	457	2- 3 pm	SAT	20	5,151	WED	24	4,579	4,803	.95
US 50	4.5 MILES W. OF DODGE CITY	FORD	6,338	6,069	6,107	- 3.6	0.6	532	4- 5 pm	FRI	26	7,141	FRI	26	6,107	6,331	.96
US 400	4.5 MILES W. OF DODGE CITY	FORD	1,205	1,184	1,156	- 4.1	- 2.4	114	4- 5 pm	WED	24	1,369	FRI	26	1,156	1,255	.92
K 25	2.5 MILES N. OF ULYSSES	GRANT	1,571	1,714	1,460	- 7.1	- 14.8	169	5- 6 pm	FRI	19	1,953	WED	3	1,460	1,613	.91
K 27	15 MILES N OF TRIBUNE	GREELEY	722	690	734	1.7	6.4	83	10-11 am	WED	3	908	TUE	30	734	802	.92
US 50	0.8 MILES E. OF KAN-COLO ST. LINE	HAMILTON	1,736	1,600	1,719	- 1.0	7.4	212	3- 4 pm	MON	1	2,229	MON	1	1,719	1,744	.99
US 283	8.3 MILES N. OF JETMORE	HODGEMAN	1,110	938	922	- 16.9	- 1.7	104	3- 4 pm	TUE	23	1,093	TUE	23	922	1,009	.91
US 54	3.7 MILES W. OF MEADE	MEADE	3,605	3,673	3,782	4.9	3.0	328	5- 6 pm	FRI	19	4,268	FRI	19	3,782	3,891	.97
K 96	12 MILES W. OF SCOTT CITY	WICHITA	1,281	1,371	1,395	8.9	1.8	157	5- 6 pm	WED	10	1,752	FRI	26	1,395	1,507	.93

- .4 .9

Percent of Change for District 6 Stations

Month of September, 2014

Sparse Matrix Model

Date: 23-OCT-2014

Route Description	Location Description	County	Average Daily Traffic for the Month			Percent Change Month		Maximum Hour				Maximum Day			7 Day Avg	5 Day Avg	7 Day / 5 Day Avg
			2012	2013	2014	2012	2013	Volume	Hour	DOW	Day	Volume	DOW	Day			

Rural Secondary Stations

RS 61	6.5 MILES S.W. OF HIAWATHA	BROWN	258	244	268	3.9	9.8	40	3- 4 pm	MON	15	338	TUE	23	268	286	.94
RS 463	2.5 MILES S.W. OF BELOIT	MITCHELL	251	260	270	7.6	3.8	57	3- 4 pm	SAT	13	378	FRI	26	270	297	.91
RS 272	2 MILES S. OF QUINTER	GOVE	360	338	381	5.8	12.7	48	7- 8 pm	MON	15	452	MON	29	381	400	.95
RS 13	0.5 MILES N. OF BUSH CITY	ANDERSON	312	459	393	26.0	- 14.4	47	7- 8 am	FRI	26	480	TUE	16	393	414	.95
RS 2316	3 MILES E. OF PARSONS	LABETTE	1,791	1,767	1,858	3.7	5.1	215	4- 5 pm	FRI	19	2,318	FRI	19	1,858	2,003	.93
RS 303	0.8 MI. S. OF US-54 & K17 JCT. (MIDWAY)	KINGMAN	331	343	369	11.5	7.6	61	5- 6 pm	MON	29	524	SAT	6	369	370	1.00
RS 251	6 MILES W. OF FORD	FORD	512	526	562	9.8	6.8	74	5- 6 pm	FRI	5	676	FRI	26	562	597	.94

Percent of Change for Rural Secondary Stations

7.5 4.2

Reservoir Stations

K 237	1.5 MILES N. OF JCT. US 24	JEFFERSON	1,268	1,198	1,221	- 3.7	1.9	190	11-12 pm	MON	1	1,694	SAT	27	1,221	1,168	1.05
LOCAL ROAD	KANOPOLIS RESERVOIR N. OF DAM	ELLSWORTH	184	242	121	- 34.2	- 50.0					307	SAT	20	121	65	1.86
LOCAL ROAD	KANOPOLIS RESERVOIR S. OF DAM	ELLSWORTH	305	288	73	- 76.1	- 74.7					286	SAT	27	73	38	1.92
LOCAL ROAD	CEDAR BLUFF RESERVOIR N. OF DAM	TREGO	248	248	102	- 58.9	- 58.9					325	MON	1	102	79	1.29

Percent of Change for Reservoir Stations

- 24.3 - 23.2

Kansas City Stations

US-69	0.4 MILES S. OF 135TH ST.	JOHNSON		52,143	53,888		3.3	5,793	5- 6 pm	THU	11	62,148	FRI	19	53,888	56,705	.95
135TH	135TH E. OF MUR-LEN	JOHNSON	34,238	35,915	34,330	0.3	- 4.4	3,263	5- 6 pm	THU	11	38,953	FRI	26	34,330	35,708	.96
BLACKBOB	BLACKBOB RD. S. OF 139TH	JOHNSON	21,241	21,613	22,053	3.8	2.0	2,243	5- 6 pm	THU	11	24,546	FRI	26	22,053	22,091	1.00
I 435	0.8 MILES S. OF I - 70	WYANDOTTE	60,810	65,116	69,295	14.0	6.4	8,182	5- 6 pm	THU	11	84,662	FRI	26	69,295	73,143	.95

Percent of Change for Kansas City Stations

8.1 2.7

Salina Stations

OHIO ST.	OHIO ST. N. OF WESTCHESTER DR.	SALINE	16,716	17,486	17,635	5.5	0.9	1,781	4- 5 pm	FRI	26	20,944	FRI	19	17,635	19,298	.91
----------	--------------------------------	--------	--------	--------	--------	-----	-----	-------	---------	-----	----	--------	-----	----	--------	--------	-----

Percent of Change for Salina Stations

5.5 .9

Topeka Stations

45TH ST. N. TOPEKA	45TH ST. E. OF INDIANA	SHAWNEE	8,534	2,688													
I 70	TOPEKA BLVD. NORTH OF PARAMORE ST.	SHAWNEE			17,734			1,985	2- 3 pm	FRI	26	22,298	FRI	26	17,734	19,391	.91
I 470	I 70 E. OF MACVICAR ST.	SHAWNEE	44,472	47,035	40,291	- 9.4	- 14.3	4,026	4- 5 pm	FRI	12	48,550	FRI	26	40,291	42,451	.95
US 40	I 470 N.W. OF HUNTOON	SHAWNEE	32,746	33,108	33,970	3.7	2.6	3,747	5- 6 pm	FRI	12	40,643	FRI	19	33,970	36,069	.94
US 75	US 40 E. OF TECUMSEH RD.	SHAWNEE	4,898	5,171	4,737	- 3.3	- 8.4	615	7- 8 am	TUE	9	5,628	FRI	19	4,737	5,166	.92
K 4	US 75 N. OF S.W. 57TH	SHAWNEE	15,767	14,578	14,091	- 10.6	- 3.3	1,735	7- 8 am	TUE	9	16,748	FRI	26	14,091	15,380	.92
	1MI. S. OF JCT. US-24	SHAWNEE	8,305	8,954	9,328	12.3	4.2	1,207	4- 5 pm	FRI	19	11,442	FRI	19	9,328	9,994	.93

Percent of Change for Topeka Stations

- 3.6 - 5.9

Month of September, 2014

Sparse Matrix Model

Date: 23-OCT-2014

---- Average Daily Traffic ----			Percent Change		---- Maximum Hour ----				--- Maximum Day ---			7 Day	5 Day	7 Day /	
for the Month			Month		Volume	Hour	DOW	Day	Volume	DOW	Day	Avg	Avg	5 Day	Avg
2012	2013	2014	2012	2013											

Route Description	Location Description	County
-------------------	----------------------	--------

Wichita Stations

K 96	K-96 E. OF GREENWICH RD.	SEDGWICK	22,936	24,026	23,157	1.0	- 3.6	2,620	5- 6 pm	TUE	9	27,384	FRI	26	23,157	25,060	.92
US 54	KELLOGG E. OF WEST ST.	SEDGWICK	89,227	90,651	90,707	1.7	0.1	8,971	5- 6 pm	THU	25	109,345	FRI	19	90,707	99,178	.91
13TH ST.	13TH ST W. OF PINECREST	SEDGWICK	13,772	12,031	13,932	1.2	15.8	1,483	5- 6 pm	WED	17	16,368	FRI	5	13,932	15,123	.92
ROCK RD.	ROCK RD. S. OF CENTRAL AVE	SEDGWICK	31,300	32,160	31,181	- 0.4	- 3.0	2,930	5- 6 pm	FRI	12	36,601	FRI	19	31,181	32,401	.96
21ST ST.	21ST ST E. OF WASHINGTON	SEDGWICK	13,071	12,872	12,789	- 2.2	- 0.6	1,346	4- 5 pm	FRI	5	15,092	FRI	19	12,789	13,565	.94
HILLSIDE ST.	HILLSIDE S. OF 15TH ST	SEDGWICK	12,119	10,278	11,747	- 3.1	14.3	1,169	5- 6 pm	WED	3	14,322	FRI	19	11,747	13,166	.89
I 235	I 235 S. OF MAPLE ST	SEDGWICK	47,287	47,891	44,790	- 5.3	- 6.5	5,049	5- 6 pm	WED	3	54,602	FRI	5	44,790	49,352	.91
I 135	I-135 N. OF 21ST ST.	SEDGWICK	66,158	69,195	71,261	7.7	3.0	7,442	7- 8 am	WED	17	83,625	FRI	26	71,261	79,798	.89

Percent of Change for Wichita Stations

1.2 .2

NOTE: * Excluded from Percent Change Totals