

**KANSAS DEPARTMENT OF TRANSPORTATION
BUREAU OF TRANSPORTATION PLANNING**

APRIL 2014

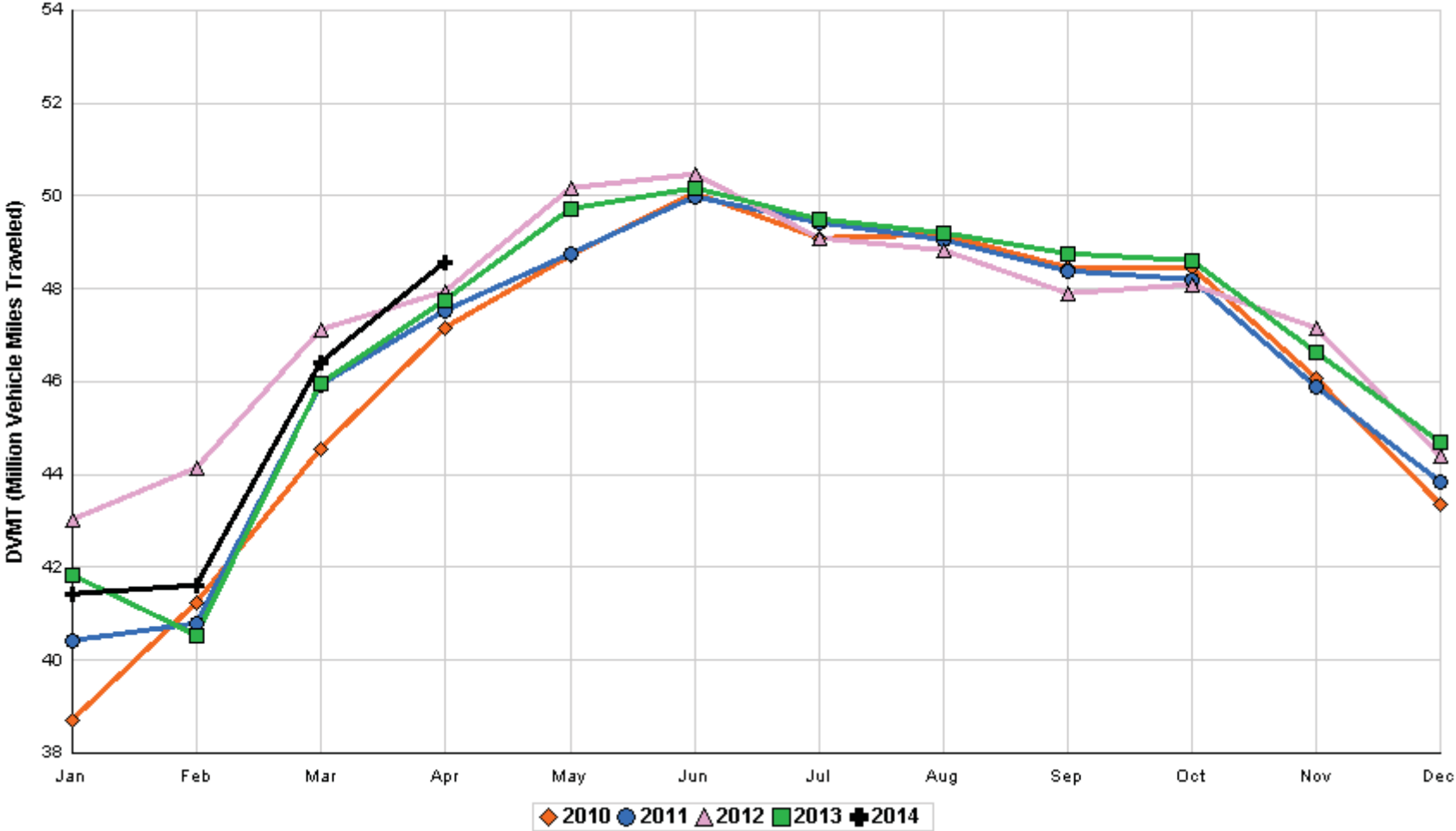
SIGNIFICANT FACTS AND TRENDS



Travel on the Kansas State Highway System				
	Daily Vehicle Miles		% Change	
	(In Millions)		2013 to 2014	
Month	2013	2014	Month	Year
Jan	41.827	41.410	- 1.0	- 1.0
Feb	40.524	41.609	2.7	0.8
Mar	45.976	46.398	0.9	0.8
Apr	47.741	48.580	1.8	1.1
May	49.709			
Jun	50.184			
Jul	49.502			
Aug	49.198			
Sep	48.754			
Oct	48.604			
Nov	46.620			
Dec	44.700			
Average	46.945			

**Contact the Traffic and Field Operations Unit with questions or requests at:
(785)-296-3841 or E-mail: TrafficCounts@ksdot.org
The Monthly Average Daily Traffic (MADT) is Calculated Utilizing the
Day-Of-Week (DOW) Method. Missing Traffic Count Data will Not be Estimated
Therefore Station Summary Data will be Blank where Data is Not Available.**

Total Travel on Kansas State Highway System 2010 - 2014



Month of April, 2014

Sparse Matrix Model

Date: 19-MAY-2014

---- Average Daily Traffic ----
for the Month

Percent Change
Month

---- Maximum Hour ----
Volume Hour DOW Day

--- Maximum Day ---
Volume DOW Day

7 Day Avg
5 Day Avg
7 Day / 5 Day Avg

Route Description	Location Description	County	2012	2013	2014	2012	2013	Volume	Hour	DOW	Day	Volume	DOW	Day	7 Day Avg	5 Day Avg	7 Day / 5 Day Avg
Rural State Highways for District 1																	
US-75	1.2 MILES N. OF US-36 I.C.	BROWN	3,759	3,771	3,959	5.3	5.0	396	2- 3 pm	FRI	25	4,779	FRI	11	3,959	4,170	.95
US 24	1.5 MILES N.E. OF LAWRENCE	DOUGLAS	6,780	6,627	6,758	- 0.3	2.0	763	5- 6 pm	FRI	25	8,174	FRI	25	6,758	6,942	.97
US 56	4 MILES E. OF OVERBROOK	DOUGLAS	1,986	1,862	1,990	0.2	6.9	249	4- 5 pm	FRI	11	2,401	FRI	18	1,990	1,976	1.01
US 75	5.8 MILES N. OF HOLTON	JACKSON	5,805	5,712	5,807	0.0	1.7	597	4- 5 pm	FRI	11	7,065	FRI	18	5,807	5,958	.97
K 10	0.2 MILES E. OF RS. 346 INTCHG.	JOHNSON	32,538	32,385	32,439	- 0.3	0.2	3,634	5- 6 pm	FRI	11	39,133	FRI	25	32,439	34,247	.95
K 99	2.9 MILES S. OF EMPORIA	LYON	4,052	3,813	3,899	- 3.8	2.3	443	5- 6 pm	FRI	11	4,668	FRI	11	3,899	4,145	.94
US 36	13 MILES E. OF MARYSVILLE	MARSHALL	2,387	2,354	2,382	- 0.2	1.2	256	4- 5 pm	SUN	20	2,911	FRI	18	2,382	2,523	.94
K 68	0.15 MILES E. OF JCT K 268	OSAGE	2,769	2,598	2,582	- 6.8	- 0.6	291	3- 4 pm	FRI	25	3,360	FRI	25	2,582	2,567	1.01
K 268	0.1 MILES E. OF US 75	OSAGE	2,960														
K 18	0.7 MILES N.E. OF OGDEN	RILEY															
US 24	4 MILES N. OF MANHATTAN	RILEY	7,404	7,191	7,259	- 2.0	0.9	856	5- 6 pm	FRI	25	9,109	FRI	25	7,259	7,191	1.01
US 24	1 MILE N.W. OF ROSSVILLE	SHAWNEE	4,885	4,181	4,619	- 5.4	10.5	635	5- 6 pm	THU	17	5,938	THU	17	4,619	5,012	.92
I 70	4.7 MILES E. OF K 30 INTCHG. (MAPLE HILL)	WABAUNSEE	19,738	19,332	19,604	- 0.7	1.4	2,656	5- 6 pm	SUN	20	27,377	FRI	18	19,604	19,187	1.02

Percent of Change for District 1 Stations

- .9 1.6

Rural State Highways for District 2

K 9	5.8 MILES E. OF CLIFTON	CLAY	403	325	288	- 28.5	- 11.4	63	1- 2 pm	MON	21	499	FRI	18	288	327	.88
K 15	3.3 MILES N. OF CLAY CENTER	CLAY	1,878	1,847	1,904	1.4	3.1	207	5- 6 pm	THU	10	2,200	FRI	11	1,904	2,055	.93
I 70	W. OF K-232 INTCHG. (WILSON)	ELLSWORTH	8,494	8,981	9,680	14.0	7.8	1,150	4- 5 pm	SUN	20	13,179	FRI	18	9,680	9,582	1.01
K 141	2.8 MILES S. OF KANOPOLIS DAM	ELLSWORTH	571	427	453	- 20.7	6.1	70	4- 5 pm	SAT	26	726	SAT	26	453	421	1.08
K 18	1.8 MILES W. OF JUNCTION CITY	GEARY	1,385	1,303	1,349	- 2.6	3.5	200	7- 8 am	TUE	22	1,646	FRI	25	1,349	1,461	.92
I 70	4.5 MILES S.W. OF JUNCTION CITY	GEARY	15,362	14,805	15,536	1.1	4.9	1,814	5- 6 pm	SUN	20	20,436	FRI	18	15,536	15,630	.99
US 77	4 MILES S. OF JUNCTION CITY	GEARY	4,021	3,845	3,927	- 2.3	2.1	498	4- 5 pm	FRI	11	5,323	FRI	18	3,927	3,924	1.00
US 36	1 MILE E. OF MANKATO	JEWELL	1,847	1,854	1,844	- 0.2	- 0.5	221	3- 4 pm	TUE	15	2,367	FRI	25	1,844	1,997	.92
K 18	0.5 MILES W. OF LINCOLN	LINCOLN	1,127	904	983	- 12.8	8.7	132	9-10 am	SAT	26	1,199	THU	10	983	1,046	.94
I 135	0.5 MILES N. OF US 56 INTCHG. (MCPHERSON)	MCPHERSON	12,117	11,935	12,734	5.1	6.7	1,411	4- 5 pm	SUN	20	16,034	FRI	18	12,734	12,665	1.01
K 14	3 MILES S. OF BELOIT	MITCHELL	831	831	846	1.8	1.8	96	5- 6 pm	FRI	25	1,039	TUE	22	846	929	.91
US 81	2.5 MILES S. OF BELLEVILLE	REPUBLIC	5,105	4,802	4,995	- 2.2	4.0	524	5- 6 pm	SUN	20	6,053	FRI	18	4,995	5,173	.97

Percent of Change for District 2 Stations

2.6 5.2

Rural State Highways for District 3

US 83	6.2 MILES S. OF OAKLEY	LOGAN	2,004	1,668	1,959	- 2.2	17.4	194	10-11 am	FRI	18	2,534	FRI	18	1,959	2,142	.91
US 36	9.5 MILES W. OF NORTON	NORTON	996	926	1,082	8.6	16.8	119	3- 4 pm	FRI	18	1,331	FRI	25	1,082	1,155	.94
US 183	1.2 MILES S. OF PHILLIPSBURG	PHILLIPS	2,476	2,230	2,309	- 6.7	3.5	315	12- 1 pm	SAT	26	2,785	FRI	25	2,309	2,437	.95
K 23	14.5 MILES S. OF HOXIE	SHERIDAN	868	816	661	- 23.8	- 19.0	95	2- 3 pm	THU	24	933	FRI	11	661	722	.92
I 70	2.2 MI. E OF KANORADO EXIT	SHERMAN	6,605	6,491	7,326	10.9	12.9	799	12- 1 pm	MON	21	9,810	FRI	18	7,326	7,439	.98
US 24	7.3 MILES E. OF COLBY	THOMAS	1,859	1,767	1,966	5.8	11.3	202	4- 5 pm	THU	17	2,414	THU	17	1,966	2,122	.93
K 25	1.8 MILES S. OF COLBY	THOMAS	275	782	660	140.0	- 15.6	136	2- 3 pm	FRI	4	939	FRI	4	660	726	.91
I 70	1 MILE W. OF WAKEENEY	TREGO	7,987	7,984	8,492	6.3	6.4	917	2- 3 pm	MON	21	11,037	FRI	18	8,492	8,686	.98
US 40	1.4 MILES E. OF KAN-COLO ST. LINE	WALLACE	498	464	508	2.0	9.5	89	12- 1 pm	SAT	26	712	THU	10	508	552	.92

Percent of Change for District 3 Stations

5.9 7.9

Month of April, 2014

Sparse Matrix Model

Date: 19-MAY-2014

---- Average Daily Traffic ----
for the Month

Percent Change
Month

---- Maximum Hour ----
Volume Hour DOW Day

--- Maximum Day ---
Volume DOW Day

7 Day Avg
5 Day Avg
7 Day / 5 Day Avg

Route Description	Location Description	County	2012	2013	2014	2012	2013	Volume	Hour	DOW	Day	Volume	DOW	Day	7 Day Avg	5 Day Avg	7 Day / 5 Day Avg
Rural State Highways for District 4																	
US 54	3 MILES W. OF IOLA	ALLEN	2,771	2,731	2,800	1.0	2.5	296	5- 6 pm	FRI	25	3,447	FRI	18	2,800	2,936	.95
US 169	1 MILE N. OF GREELEY	ANDERSON	3,299	3,189	3,275	- 0.7	2.7	369	4- 5 pm	SUN	20	4,077	FRI	18	3,275	3,412	.96
US 69	2 MILES N. OF FT SCOTT	BOURBON			6,380			753	5- 6 pm	SUN	20	8,305	FRI	18	6,380	6,428	.99
US 166	0.5 MILES W. OF NIOTAZE	CHAUTAUQUA	2,445	2,370	2,409	- 1.5	1.6	256	5- 6 pm	SUN	20	3,001	FRI	25	2,409	2,492	.97
I 35	2 MILES W. OF K- 131 INTCHG. N. OF LEBO	COFFEY	12,708	13,071	13,501	6.2	3.3	1,755	5- 6 pm	SUN	20	17,301	FRI	18	13,501	13,331	1.01
US 59	4.3 MILES S. OF OTTAWA	FRANKLIN	5,928	5,806	6,308	6.4	8.6	688	4- 5 pm	THU	10	7,638	FRI	25	6,308	6,545	.96
I 35	2 MILES N.E. OF THE WELLSVILLE INTCHG.	FRANKLIN	19,916	19,282													
US 400	3 MILES E. OF PARSONS	LABETTE	3,534	3,689	3,723	5.3	0.9	413	4- 5 pm	FRI	11	4,765	FRI	18	3,723	3,842	.97
US 59	4 MILES S. OF ERIE	NEOSHO	2,964	2,691	3,031	2.3	12.6	336	7- 8 am	TUE	22	3,684	FRI	4	3,031	3,316	.91
US 169	1 MILE N. OF THAYER	NEOSHO	4,089	4,108	4,251	4.0	3.5	514	5- 6 pm	FRI	11	5,631	FRI	11	4,251	4,490	.95
US 75	1 MILE N. OF YATES CENTER	WOODSON	2,630	2,555	2,660	1.1	4.1	316	5- 6 pm	SUN	20	3,285	FRI	18	2,660	2,719	.98
K 105	2 MILES N. OF TORONTO	WOODSON	598	584	549	- 8.2	- 6.0	83	11-12 pm	SAT	19	763	SAT	19	549	536	1.02

Percent of Change for District 4 Stations

3.8 4.2

Rural State Highways for District 5

US 56	5.5 MILES E. OF GREAT BEND	BARTON	5,298	5,199	5,299	0.0	1.9	576	4- 5 pm	FRI	11	6,560	FRI	11	5,299	5,663	.94
US 77	2 MILES N. OF EL DORADO	BUTLER	2,631	2,475	2,677	1.7	8.2	310	4- 5 pm	FRI	25	3,463	FRI	25	2,677	2,697	.99
US 400	1.5 MILES E. OF LEON	BUTLER	4,262	4,163	4,690	10.0	12.7	560	5- 6 pm	SUN	20	6,441	FRI	18	4,690	4,747	.99
US 77	3.7 MILES N. OF ARKANSAS CITY	COWLEY	11,151	10,880	11,103	- 0.4	2.0	1,128	3- 4 pm	FRI	4	13,440	FRI	11	11,103	12,052	.92
US 160	6.2 MILES E. OF ATTICA	HARPER	1,571	1,642	1,545	- 1.7	- 5.9	206	9-10 am	SAT	5	1,995	SAT	5	1,545	1,633	.95
US 50	3 MILES N.E. OF NEWTON	HARVEY	6,386	6,187	6,318	- 1.1	2.1	693	5- 6 pm	FRI	4	7,641	FRI	25	6,318	6,455	.98
US 54	5.8 MILES W. OF KINGMAN	KINGMAN	5,159		5,073	- 1.7		542	3- 4 pm	FRI	4	6,321	FRI	4	5,073	5,232	.97
US 54	1.5 MILES W. OF HAVILAND	KIOWA	5,346	5,312	5,295	- 1.0	- 0.3	494	2- 3 pm	FRI	4	6,519	FRI	4	5,295	5,495	.96
US 183	7 MILES S. OF GREENSBURG	KIOWA	1,034	996	960	- 7.2	- 3.6	102	10-11 am	TUE	15	1,186	FRI	4	960	1,058	.91
US 56	5 MILES S.W. OF LARNED	PAWNEE	2,319	2,298	2,348	1.3	2.2	253	4- 5 pm	FRI	11	2,854	FRI	18	2,348	2,498	.94
K 61	5 MILES S.W. OF ARLINGTON	RENO	2,037	2,258	2,136	4.9	- 5.4	226	3- 4 pm	THU	3	2,458	THU	3	2,136	2,232	.96
K 14	1 MILE N. OF LYONS	RICE	1,556	1,317	1,418	- 8.9	7.7	169	5- 6 pm	MON	21	1,729	FRI	11	1,418	1,523	.93
K 42	3 MILES N.E. OF VIOLA	SEDGWICK	4,612	4,483	4,609	- 0.1	2.8	500	4- 5 pm	FRI	4	5,528	FRI	18	4,609	4,986	.92
US 281	0.5 MILES S. OF ST. JOHN	STAFFORD	2,619	2,452	2,582	- 1.4	5.3	276	5- 6 pm	FRI	25	3,231	FRI	25	2,582	2,799	.92
US 81	4.1 MILES S. OF WELLINGTON	SUMNER	1,738	1,693	1,728	- 0.6	2.1	175	4- 5 pm	THU	3	1,978	THU	10	1,728	1,848	.94

Percent of Change for District 5 Stations

.1 2.6

Rural State Highways for District 6

US 83	8.2 MILES S. OF GARDEN CITY	FINNEY	4,184	4,099	4,448	6.3	8.5	446	5- 6 pm	THU	17	5,152	FRI	25	4,448	4,742	.94
US 50	4.5 MILES W. OF DODGE CITY	FORD	6,189	6,406	5,829	- 5.8	- 9.0	537	5- 6 pm	WED	9	6,883	FRI	4	5,829	6,143	.95
US 400	4.5 MILES W. OF DODGE CITY	FORD	1,139	1,124	1,116	- 2.0	- 0.7	132	6- 7 pm	TUE	1	1,431	FRI	4	1,116	1,245	.90
K 25	2.5 MILES N. OF ULYSSES	GRANT	1,685	1,889	1,658	- 1.6	- 12.2	184	3- 4 pm	THU	10	2,071	TUE	8	1,658	1,846	.90
K 27	15 MILES N OF TRIBUNE	GREELEY	791	700	737	- 6.8	5.3	108	2- 3 pm	FRI	11	1,091	FRI	11	737	846	.87
US 50	0.8 MILES E. OF KAN-COLO ST. LINE	HAMILTON	1,482	1,404	1,434	- 3.2	2.1	149	5- 6 pm	FRI	4	1,787	FRI	18	1,434	1,488	.96
US 283	8.3 MILES N. OF JETMORE	HODGEMAN	1,045	965	938	- 10.2	- 2.8	121	10-11 am	SAT	26	1,218	TUE	8	938	1,019	.92
US 54	3.7 MILES W. OF MEADE	MEADE	3,743	3,976	4,045	8.1	1.7	395	12- 1 pm	WED	2	5,116	TUE	1	4,045	4,212	.96
K 96	12 MILES W. OF SCOTT CITY	WICHITA	1,310	1,249	1,259	- 3.9	0.8	146	5- 6 pm	TUE	22	1,567	FRI	25	1,259	1,388	.91

Percent of Change for District 6 Stations

- .5 - 1.6

Month of April, 2014

Sparse Matrix Model

Date: 19-MAY-2014

---- Average Daily Traffic ----
for the Month
2012 2013 2014

Percent Change
Month
2012 2013

---- Maximum Hour ----
Volume Hour DOW Day

--- Maximum Day ---
Volume DOW Day

7 Day Avg
5 Day Avg
7 Day / 5 Day Avg

Route Description Location Description County

Rural Secondary Stations

RS 61	6.5 MILES S.W. OF HIAWATHA	BROWN	271	242	262	- 3.3	8.3	35	5- 6 pm	TUE	1	337	FRI	11	262	280	.94
RS 463	0.7 MILES S.W. OF BELOIT	MITCHELL	231	233	247	6.9	6.0	38	4- 5 pm	FRI	11	326	WED	16	247	274	.90
RS 272	2 MILES S. OF QUINTER	GOVE	380	342	316	- 16.8	- 7.6	46	12- 1 pm	SUN	20	452	SAT	26	316	324	.98
RS 13	0.5 MILES N. OF BUSH CITY	ANDERSON	334	440	469	40.4	6.6	82	1- 2 pm	TUE	29	616	TUE	8	469	489	.96
RS 2316	3 MILES E. OF PARSONS	LABETTE	1,861	1,906	1,789	- 3.9	- 6.1	209	3- 4 pm	FRI	25	2,268	FRI	25	1,789	1,942	.92
RS 303	0.8 MI. S. OF US-54 & K17 JCT. (MIDWAY)	KINGMAN	294	287	310	5.4	8.0	46	5- 6 pm	TUE	8	393	TUE	8	310	321	.97
RS 251	6 MILES W. OF FORD	FORD	467	447	469	0.4	4.9	62	2- 3 pm	FRI	4	672	FRI	25	469	481	.98

Percent of Change for Rural Secondary Stations

.6 - .9

Reservoir Stations

K 237	1.5 MILES N. OF JCT. US 24	JEFFERSON	1,247	1,101	1,165	- 6.6	5.8	168	4- 5 pm	FRI	25	1,651	FRI	25	1,165	1,153	1.01
LOCAL ROAD	KANOPOLIS RESERVOIR N. OF DAM	ELLSWORTH	189	113	138	- 27.0	22.1					326	SAT	26	138	105	1.31
LOCAL ROAD	KANOPOLIS RESERVOIR S. OF DAM	ELLSWORTH	262	131	245	- 6.5	87.0					467	SAT	26	245	202	1.21
LOCAL ROAD	CEDAR BLUFF RESERVOIR N. OF DAM	TREGO	179	8	138	- 22.9	*****					453	SUN	27	138	84	1.64

Percent of Change for Reservoir Stations

- 10.2 24.6

Kansas City Stations

US-69	0.4 MILES S. OF 135TH ST.	JOHNSON		51,782	53,386		3.1	5,711	5- 6 pm	WED	30	62,318	FRI	18	53,386	57,391	.93
135TH	135TH E. OF MUR-LEN	JOHNSON	36,038	34,924	35,740	- 0.8	2.3	3,475	5- 6 pm	TUE	1	41,756	FRI	18	35,740	37,531	.95
BLACKBOB	BLACKBOB RD. S. OF 139TH	JOHNSON	23,156	22,458	22,986	- 0.7	2.4	2,315	12- 1 pm	SAT	12	28,375	SAT	19	22,986	23,142	.99
I 435	0.8 MILES S. OF I - 70	WYANDOTTE	61,953	63,306	65,589	5.9	3.6	7,812	5- 6 pm	FRI	11	79,762	FRI	25	65,589	70,020	.94

Percent of Change for Kansas City Stations

2.6 3.0

Salina Stations

OHIO ST.	OHIO ST. N. OF WESTCHESTER DR.	SALINE	14,620	18,001	18,163	24.2	0.9	1,794	4- 5 pm	WED	9	21,576	FRI	18	18,163	19,793	.92
----------	--------------------------------	--------	--------	--------	--------	------	-----	-------	---------	-----	---	--------	-----	----	--------	--------	-----

Percent of Change for Salina Stations

24.2 .9

Topeka Stations

45TH ST.	45TH ST. E. OF INDIANA	SHAWNEE	7,210	3,880													
N. TOPEKA	TOPEKA BLVD. NORTH OF PARAMORE ST.	SHAWNEE	18,905	18,117	17,462	- 7.6	- 3.6	1,728	4- 5 pm	FRI	11	20,854	FRI	4	17,462	19,033	.92
I 70	I 70 E. OF MACVICAR ST.	SHAWNEE	44,796	45,661	46,283	3.3	1.4	4,979	4- 5 pm	FRI	4	56,423	FRI	18	46,283	49,920	.93
I 470	I 470 N.W. OF HUNTOON	SHAWNEE	33,201	32,851	33,041	- 0.5	0.6	3,609	5- 6 pm	THU	17	40,381	FRI	18	33,041	35,578	.93
US 40	US 40 E. OF TECUMSEH RD.	SHAWNEE	4,928	5,043	4,593	- 6.8	- 8.9	623	5- 6 pm	WED	9	5,505	FRI	25	4,593	5,016	.92
US 75	US 75 N. OF S.W. 57TH	SHAWNEE	14,515	14,267	14,404	- 0.8	1.0	1,689	7- 8 am	TUE	22	17,260	FRI	11	14,404	15,840	.91
K 4	1MI. S. OF JCT. US-24	SHAWNEE	8,814	9,174	8,823	0.1	- 3.8	1,086	7- 8 am	TUE	22	10,478	FRI	25	8,823	9,501	.93

Percent of Change for Topeka Stations

- .4 - .4

Month of April, 2014

Sparse Matrix Model

Date: 19-MAY-2014

---- Average Daily Traffic ----			Percent Change		---- Maximum Hour ----				--- Maximum Day ---			7 Day	5 Day	7 Day /	
for the Month			Month		Volume	Hour	DOW	Day	Volume	DOW	Day	Avg	Avg	5 Day	Avg
2012	2013	2014	2012	2013											

Route Description	Location Description	County
-------------------	----------------------	--------

Wichita Stations

K 96	K-96 E. OF GREENWICH RD.	SEDGWICK	23,546	23,549	23,873	1.4	1.4	2,659	5- 6 pm	THU	10	27,723	FRI	25	23,873	25,894	.92
US 54	KELLOGG E. OF WEST ST.	SEDGWICK	89,701	90,225	92,522	3.1	2.5	9,470	4- 5 pm	FRI	4	112,816	FRI	4	92,522	101,419	.91
13TH ST.	13TH ST W. OF PINECREST	SEDGWICK	15,067	11,399	14,399	- 4.4	26.3	1,612	5- 6 pm	WED	16	16,835	FRI	18	14,399	15,596	.92
ROCK RD.	ROCK RD. S. OF CENTRAL AVE	SEDGWICK	31,420	31,865	32,234	2.6	1.2	3,257	12- 1 pm	FRI	18	39,825	FRI	18	32,234	33,687	.96
21ST ST.	21ST ST E. OF WASHINGTON	SEDGWICK	12,995	13,422	12,793	- 1.6	- 4.7	1,399	4- 5 pm	FRI	11	15,240	FRI	11	12,793	13,686	.93
HILLSIDE ST.	HILLSIDE S. OF 15TH ST	SEDGWICK	12,344	11,123	11,605	- 6.0	4.3	1,209	5- 6 pm	WED	30	13,599	FRI	18	11,605	13,001	.89
I 235	I 235 S. OF MAPLE ST	SEDGWICK	47,742	47,378	47,137	- 1.3	- 0.5	5,091	5- 6 pm	FRI	4	56,398	FRI	4	47,137	50,970	.92
I 135	I-135 N. OF 21ST ST.	SEDGWICK	68,193	67,170	69,904	2.5	4.1	7,663	7- 8 am	WED	9	85,945	FRI	4	69,904	79,124	.88

Percent of Change for Wichita Stations

1.1 2.8

NOTE: * Excluded from Percent Change Totals