

**KANSAS DEPARTMENT OF TRANSPORTATION
BUREAU OF TRANSPORTATION PLANNING**

SEPTEMBER 2013

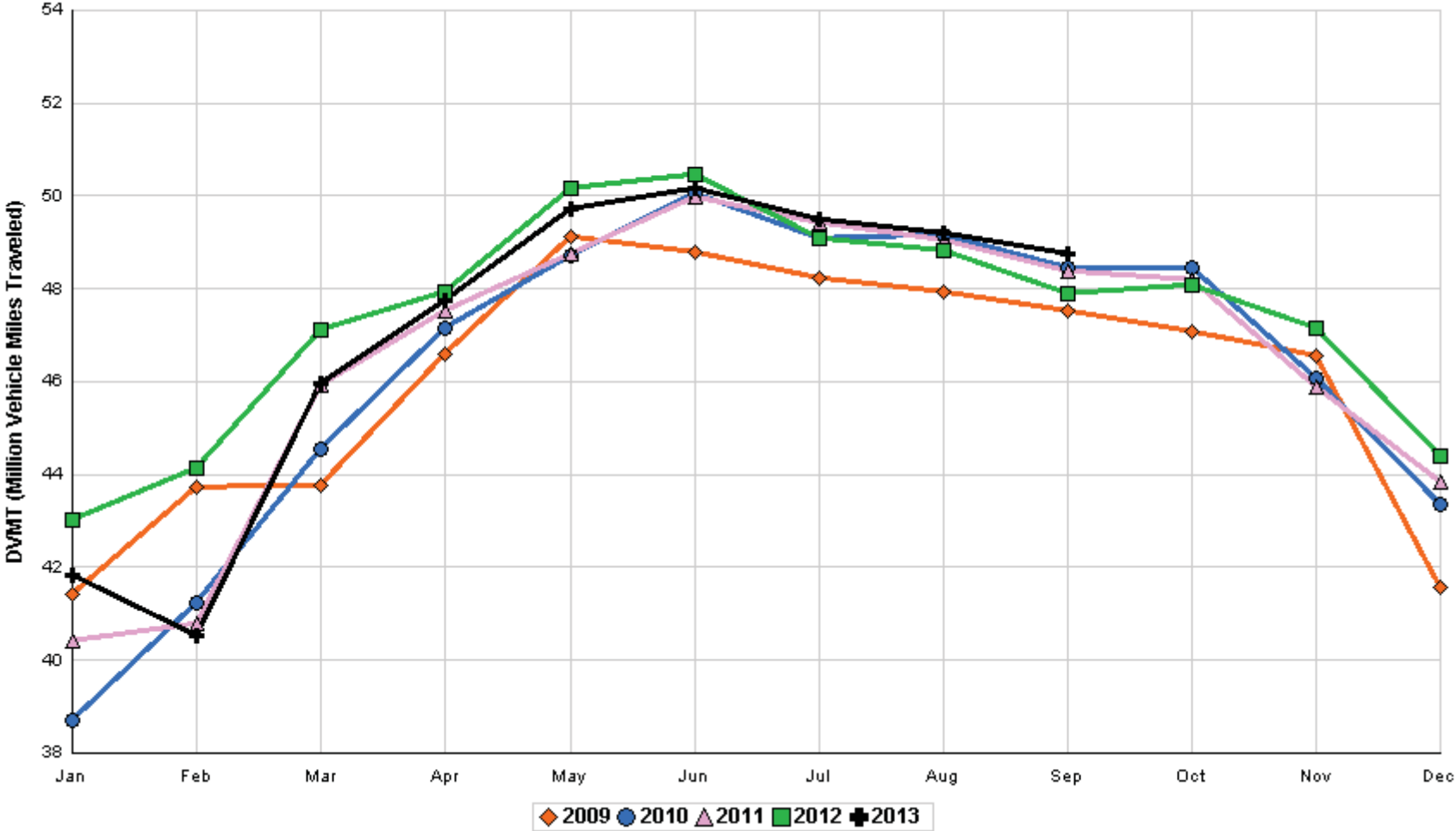
SIGNIFICANT FACTS AND TRENDS



Travel on the Kansas State Highway System				
	Daily Vehicle Miles		% Change	
	(In Millions)		2012 to 2013	
Month	2012	2013	Month	Year
Jan	43.023	41.827	- 2.8	- 2.8
Feb	44.153	40.524	- 8.2	- 5.5
Mar	47.116	45.976	- 2.4	- 4.4
Apr	47.916	47.741	- 0.4	- 3.4
May	50.155	49.709	- 0.9	- 2.8
Jun	50.464	50.184	- 0.6	- 2.4
Jul	49.090	49.502	0.8	- 1.9
Aug	48.829	49.198	0.8	- 1.6
Sep	47.889	48.754	1.8	- 1.2
Oct	48.089			
Nov	47.139			
Dec	44.405			
Average	47.356			

**Contact the Traffic and Field Operations Unit with questions or requests at:
(785)-296-3841 or E-mail: TrafficCounts@ksdot.org
The Monthly Average Daily Traffic (MADT) is Calculated Utilizing the
Day-Of-Week (DOW) Method. Missing Traffic Count Data will Not be Estimated
Therefore Station Summary Data will be Blank where Data is Not Available.**

Total Travel on Kansas State Highway System 2009 - 2013



Date: 10-OCT-2013

Month of September, 2013

Sparse Matrix Model

---- Average Daily Traffic ----
for the Month

Percent Change
Month

---- Maximum Hour ----
Volume Hour DOW Day

--- Maximum Day ---
Volume DOW Day

7 Day Avg
5 Day Avg
7 Day / 5 Day Avg

Route Description Location Description County

2011 2012 2013 2011 2012

Volume Hour DOW Day

Volume DOW Day

7 Day Avg
5 Day Avg
7 Day / 5 Day Avg

Rural State Highways for District 1

US-75	1.2 MILES N. OF US-36 I.C.	BROWN	5,943	3,751	3,897	- 34.4	3.9	406	4- 5 pm	FRI	20	4,957	FRI	20	3,897	4,027	.97
US 24	1.5 MILES N.E. OF LAWRENCE	DOUGLAS	7,107	6,720	6,883	- 3.2	2.4	795	5- 6 pm	FRI	6	7,926	FRI	6	6,883	7,041	.98
US 56	4 MILES E. OF OVERBROOK	DOUGLAS	2,040	2,082	2,072	1.6	- 0.5	235	4- 5 pm	THU	12	2,687	SAT	21	2,072	2,040	1.02
US 75	5.8 MILES N. OF HOLTON	JACKSON	6,757	5,835	5,913	- 12.5	1.3	644	4- 5 pm	FRI	20	7,271	FRI	20	5,913	5,985	.99
K 10	0.2 MILES E. OF RS. 346 INTCHG.	JOHNSON	33,168	32,087	33,160	0.0	3.3	3,655	5- 6 pm	FRI	13	38,539	FRI	13	33,160	34,344	.97
K 99	2.9 MILES S. OF EMPORIA	LYON	3,956	3,787	3,990	0.9	5.4	452	5- 6 pm	WED	4	4,895	FRI	13	3,990	4,243	.94
US 36	13 MILES E. OF MARYSVILLE	MARSHALL	3,213	2,511	2,531	- 21.2	0.8	317	5- 6 pm	FRI	20	3,369	FRI	20	2,531	2,593	.98
K 68	0.15 MILES E. OF JCT K 268	OSAGE	2,883	2,698	2,258	- 21.7	- 16.3	309	3- 4 pm	FRI	13	2,927	SAT	21	2,258	2,194	1.03
K 268	0.1 MILES E. OF US 75	OSAGE	3,012	2,835													
K 18	0.7 MILES N.E. OF OGDEN	RILEY															
US 24	4 MILES N. OF MANHATTAN	RILEY	7,438	7,166	7,136	- 4.1	- 0.4	827	9-10 pm	SAT	14	8,791	SAT	14	7,136	6,994	1.02
US 24	1 MILE N.W. OF ROSSVILLE	SHAWNEE	4,631	4,329	4,503	- 2.8	4.0	574	5- 6 pm	THU	19	5,524	FRI	27	4,503	4,819	.93
I 70	4.7 MILES E. OF K 30 INTCHG. (MAPLE HILL)	WABAUNSEE		20,913	21,236		1.5	2,448	2- 3 pm	SAT	14	28,913	SAT	7	21,236	20,148	1.05

Percent of Change for District 1 Stations

- 6.2 1.9

Rural State Highways for District 2

K 9	5.8 MILES E. OF CLIFTON	CLAY	358	359	359	0.3	0.0	48	7- 8 am	MON	9	493	WED	4	359	398	.90
K 15	3.3 MILES N. OF CLAY CENTER	CLAY	1,997	1,883	1,901	- 4.8	1.0	207	4- 5 pm	FRI	27	2,336	FRI	27	1,901	2,034	.93
I 70	W. OF K-232 INTCHG. (WILSON)	ELLSWORTH	10,764		10,769	0.0		1,571	3- 4 pm	MON	2	15,673	MON	2	10,769	10,596	1.02
K 141	2.8 MILES S. OF KANOPOLIS DAM	ELLSWORTH		495	552		11.5	140	4- 5 pm	MON	2	1,377	MON	2	552	491	1.12
K 18	1.8 MILES W. OF JUNCTION CITY	GEARY	1,412	1,343	1,533	8.6	14.1	206	7- 8 am	MON	23	1,779	FRI	13	1,533	1,653	.93
I 70	4.5 MILES S.W. OF JUNCTION CITY	GEARY	17,357	16,652	16,728	- 3.6	0.5	1,870	3- 4 pm	MON	2	21,130	SAT	14	16,728	16,395	1.02
US 77	4 MILES S. OF JUNCTION CITY	GEARY	3,927	3,832	3,971	1.1	3.6	522	2- 3 pm	SAT	7	5,865	SAT	7	3,971	3,849	1.03
US 36	1 MILE E. OF MANKATO	JEWELL	1,978	1,872	1,953	- 1.3	4.3	233	5- 6 pm	FRI	20	2,871	FRI	20	1,953	2,059	.95
K 18	0.5 MILES W. OF LINCOLN	LINCOLN	1,137	1,054	999	- 12.1	- 5.2	131	3- 4 pm	TUE	3	1,303	FRI	13	999	1,072	.93
I 135	0.5 MILES N. OF US 56 INTCHG. (MCPHERSON)	MCPHERSON	13,327	12,736	13,521	1.5	6.2	1,455	5- 6 pm	FRI	13	17,197	FRI	13	13,521	13,195	1.02
K 14	3 MILES S. OF BELOIT	MITCHELL	889	840	861	- 3.1	2.5	110	4- 5 pm	FRI	6	1,134	FRI	6	861	955	.90
US 81	2.5 MILES S. OF BELLEVILLE	REPUBLIC		4,827	5,028		4.2	512	3- 4 pm	MON	2	6,247	FRI	20	5,028	5,091	.99

Percent of Change for District 2 Stations

- 1.0 3.3

Rural State Highways for District 3

US 83	6.2 MILES S. OF OAKLEY	LOGAN	2,098	1,930	1,782	- 15.1	- 7.7	209	8- 9 am	SAT	28	2,197	SAT	28	1,782	1,871	.95
US 36	9.5 MILES W. OF NORTON	NORTON	1,107	1,052	1,027	- 7.2	- 2.4	163	5- 6 pm	FRI	27	1,339	FRI	20	1,027	1,097	.94
US 183	1.2 MILES S. OF PHILLIPSBURG	PHILLIPS	2,449	2,369	2,241	- 8.5	- 5.4	240	5- 6 pm	FRI	13	2,763	FRI	13	2,241	2,388	.94
K 23	14.5 MILES S. OF HOXIE	SHERIDAN	869	852	816	- 6.1	- 4.2	112	3- 4 pm	THU	26	1,007	FRI	6	816	874	.93
I 70	2.2 MI. E OF KANORADO EXIT	SHERMAN	8,570	8,169	9,439	10.1	15.5	1,273	2- 3 pm	MON	2	12,769	MON	2	9,439	9,243	1.02
US 24	7.3 MILES E. OF COLBY	THOMAS	1,963	1,882	1,941	- 1.1	3.1	205	4- 5 pm	MON	16	2,412	THU	19	1,941	2,090	.93
K 25	1.8 MILES S. OF COLBY	THOMAS	907	859	788	- 13.1	- 8.3	94	4- 5 pm	FRI	27	1,105	FRI	20	788	884	.89
I 70	1 MILE W. OF WAKEENEY	TREGO	9,966	9,179	9,473	- 4.9	3.2	1,384	2- 3 pm	MON	2	13,469	MON	2	9,473	9,559	.99
US 40	1.4 MILES E. OF KAN-COLO ST. LINE	WALLACE	589	567	539	- 8.5	- 4.9	65	3- 4 pm	WED	25	642	MON	30	539	577	.93

Percent of Change for District 3 Stations

- 1.7 4.4

Date: 10-OCT-2013

Month of September, 2013

Sparse Matrix Model

Route Description	Location Description	County	Average Daily Traffic for the Month			Percent Change Month		Maximum Hour				Maximum Day			7 Day Avg	5 Day Avg	7 Day / 5 Day Avg
			2011	2012	2013	2011	2012	Volume	Hour	DOW	Day	Volume	DOW	Day			
Rural State Highways for District 4																	
US 54	3 MILES W. OF IOLA	ALLEN	2,912	2,788	2,890	- 0.8	3.7	307	4- 5 pm	FRI	20	3,618	FRI	20	2,890	3,036	.95
US 169	1 MILE N. OF GREELEY	ANDERSON	3,319	3,109	3,322	0.1	6.9	383	5- 6 pm	FRI	13	4,099	FRI	6	3,322	3,426	.97
US 69	2 MILES N. OF FT SCOTT	BOURBON	5,896		6,343	7.6		693	5- 6 pm	FRI	13	8,252	FRI	27	6,343	6,325	1.00
US 166	0.5 MILES W. OF NIOTAZE	CHAUTAUQUA	2,531	2,515	2,457	- 2.9	- 2.3	272	4- 5 pm	FRI	13	3,071	FRI	13	2,457	2,516	.98
I 35	2 MILES W. OF K- 131 INTCHG. N. OF LEBO	COFFEY	12,863	12,527	13,384	4.1	6.8	1,794	5- 6 pm	SUN	15	16,555	FRI	13	13,384	13,002	1.03
US 59	4.3 MILES S. OF OTTAWA	FRANKLIN	5,845	5,876	5,961	2.0	1.4	632	5- 6 pm	FRI	13	7,141	FRI	6	5,961	6,078	.98
I 35	2 MILES N.E. OF THE WELLSVILLE INTCHG.	FRANKLIN	19,462	19,696	20,431	5.0	3.7	2,234	4- 5 pm	FRI	20	24,632	FRI	20	20,431	20,540	.99
US 400	3 MILES E. OF PARSONS	LABETTE	3,877	3,699	3,923	1.2	6.1	568	3- 4 pm	MON	2	5,257	MON	2	3,923	4,044	.97
US 59	4 MILES S. OF ERIE	NEOSHO	3,011	2,949	3,058	1.6	3.7	371	5- 6 pm	FRI	27	3,846	FRI	13	3,058	3,339	.92
US 169	1 MILE N. OF THAYER	NEOSHO	4,221	4,043	4,397	4.2	8.8	499	5- 6 pm	FRI	27	5,788	FRI	27	4,397	4,642	.95
US 75	1 MILE N. OF YATES CENTER	WOODSON	2,670	2,597	2,697	1.0	3.9	334	4- 5 pm	FRI	20	3,476	FRI	27	2,697	2,767	.97
K 105	2 MILES N. OF TORONTO	WOODSON	604	601	599	- 0.8	- 0.3	95	2- 3 pm	MON	2	860	SUN	1	599	592	1.01

3.3 4.5

Percent of Change for District 4 Stations

Rural State Highways for District 5

US 56	5.5 MILES E. OF GREAT BEND	BARTON	5,346	5,261	5,395	0.9	2.5	583	5- 6 pm	FRI	6	6,504	FRI	27	5,395	5,674	.95
US 77	2 MILES N. OF EL DORADO	BUTLER	2,772	2,695	2,841	2.5	5.4	372	1- 2 pm	SUN	22	3,557	SUN	22	2,841	2,792	1.02
US 400	1.5 MILES E. OF LEON	BUTLER	4,467		4,776	6.9		735	4- 5 pm	MON	2	6,868	MON	2	4,776	4,768	1.00
US 77	3.7 MILES N. OF ARKANSAS CITY	COWLEY		10,794	10,970		1.6	1,134	3- 4 pm	FRI	27	13,240	FRI	20	10,970	11,763	.93
US 160	6.2 MILES E. OF ATTICA	HARPER	1,550	1,579	1,643	6.0	4.1	188	5- 6 pm	FRI	27	2,110	FRI	27	1,643	1,785	.92
US 50	3 MILES N.E. OF NEWTON	HARVEY	6,571	6,409	6,538	- 0.5	2.0	780	1- 2 pm	SAT	21	9,409	SAT	21	6,538	6,457	1.01
US 54	5.8 MILES W. OF KINGMAN	KINGMAN	4,995	5,241	4,765	- 4.6	- 9.1	505	5- 6 pm	FRI	20	5,869	FRI	20	4,765	4,855	.98
US 54	1.5 MILES W. OF HAVILAND	KIOWA	5,135	5,263	5,100	- 0.7	- 3.1	479	4- 5 pm	FRI	13	6,088	FRI	27	5,100	5,205	.98
US 183	7 MILES S. OF GREENSBURG	KIOWA	972	1,065	954	- 1.9	- 10.4	101	3- 4 pm	THU	5	1,110	FRI	27	954	1,028	.93
US 56	5 MILES S.W. OF LARNED	PAWNEE	2,139	2,124	2,115	- 1.1	- 0.4	214	4- 5 pm	FRI	13	2,550	FRI	13	2,115	2,201	.96
K 61	5 MILES S.W. OF ARLINGTON	RENO	2,121	2,077	2,201	3.8	6.0	269	1- 2 pm	FRI	6	3,092	FRI	6	2,201	2,226	.99
K 14	1 MILE N. OF LYONS	RICE	1,581	1,464	1,444	- 8.7	- 1.4	165	4- 5 pm	FRI	6	1,798	FRI	6	1,444	1,488	.97
K 42	3 MILES N.E. OF VIOLA	SEDGWICK		4,561	4,541		- 0.4	518	4- 5 pm	FRI	20	5,516	FRI	6	4,541	4,922	.92
US 281	0.5 MILES S. OF ST. JOHN	STAFFORD	2,566	2,391	2,587	0.8	8.2	283	5- 6 pm	FRI	6	3,088	THU	19	2,587	2,809	.92
US 81	4.1 MILES S. OF WELLINGTON	SUMNER	1,711	1,739	1,665	- 2.7	- 4.3	164	5- 6 pm	MON	30	1,935	THU	5	1,665	1,773	.94

.2 .2

Percent of Change for District 5 Stations

Rural State Highways for District 6

US 83	8.2 MILES S. OF GARDEN CITY	FINNEY	4,229	4,363	4,413	4.4	1.1	433	4- 5 pm	WED	11	4,966	THU	19	4,413	4,658	.95
US 50	4.5 MILES W. OF DODGE CITY	FORD	5,964	6,338	6,069	1.8	- 4.2	548	5- 6 pm	FRI	13	7,023	FRI	20	6,069	6,398	.95
US 400	4.5 MILES W. OF DODGE CITY	FORD	1,040	1,205	1,184	13.8	- 1.7	119	5- 6 pm	MON	9	1,463	FRI	20	1,184	1,307	.91
K 25	2.5 MILES N. OF ULYSSES	GRANT	1,609	1,571	1,714	6.5	9.1	182	5- 6 pm	FRI	27	2,127	FRI	27	1,714	1,897	.90
K 27	15 MILES N OF TRIBUNE	GREELEY	755	722	690	- 8.6	- 4.4	93	6- 7 pm	FRI	6	926	FRI	6	690	761	.91
US 50	0.8 MILES E. OF KAN-COLO ST. LINE	HAMILTON	1,738	1,736	1,600	- 7.9	- 7.8	207	4- 5 pm	MON	2	2,087	MON	2	1,600	1,628	.98
US 283	8.3 MILES N. OF JETMORE	HODGEMAN	929	1,110	938	1.0	- 15.5	104	6- 7 pm	FRI	27	1,232	FRI	6	938	1,025	.92
US 54	3.7 MILES W. OF MEADE	MEADE	3,536	3,605	3,673	3.9	1.9	314	1- 2 pm	SAT	28	4,175	FRI	20	3,673	3,768	.97
K 96	12 MILES W. OF SCOTT CITY	WICHITA	1,308	1,281	1,371	4.8	7.0	143	5- 6 pm	TUE	10	1,748	FRI	6	1,371	1,503	.91

2.6 - 1.3

Percent of Change for District 6 Stations

Month of September, 2013

Sparse Matrix Model

Date: 10-OCT-2013

---- Average Daily Traffic ----
for the Month
2011 2012 2013

Percent Change
Month
2011 2012

---- Maximum Hour ----
Volume Hour DOW Day

--- Maximum Day ---
Volume DOW Day

7 Day Avg
5 Day Avg
7 Day / 5 Day Avg

Route Description Location Description County

Rural Secondary Stations

RS 61	6.5 MILES S.W. OF HIAWATHA	BROWN	207	258	244	17.9	- 5.4	33	4- 5 pm	TUE	10	306	FRI	6	244	261	.93
RS 463	0.7 MILES S.W. OF BELOIT	MITCHELL	278	251	260	- 6.5	3.6	47	6- 7 pm	FRI	6	392	FRI	6	260	290	.90
RS 272	2 MILES S. OF QUINTER	GOVE	403	360	338	- 16.1	- 6.1	43	9-10 am	TUE	24	423	TUE	10	338	359	.94
RS 13	0.5 MILES N. OF BUSH CITY	ANDERSON	350	312	459	31.1	47.1	58	5- 6 pm	WED	25	559	FRI	13	459	477	.96
RS 2316	3 MILES E. OF PARSONS	LABETTE	1,857	1,791	1,767	- 4.8	- 1.3	200	3- 4 pm	FRI	13	2,155	FRI	6	1,767	1,916	.92
RS 303	0.8 MI. S. OF US-54 & K17 JCT. (MIDWAY)	KINGMAN	324	331	343	5.9	3.6	52	6- 7 pm	FRI	6	442	FRI	6	343	348	.99
RS 251	6 MILES W. OF FORD	FORD	443	512	526	18.7	2.7	72	5- 6 pm	FRI	27	728	FRI	27	526	547	.96

Percent of Change for Rural Secondary Stations

1.9 3.2

Reservoir Stations

K 237	1.5 MILES N. OF JCT. US 24	JEFFERSON	1,349	1,268	1,198	- 11.2	- 5.5	181	12- 1 pm	SUN	1	1,962	SUN	1	1,198	1,102	1.09
LOCAL ROAD	KANOPOLIS RESERVOIR N. OF DAM	ELLSWORTH	270	184	242	- 10.4	31.5					892	SUN	1	242	173	1.40
LOCAL ROAD	KANOPOLIS RESERVOIR S. OF DAM	ELLSWORTH	339	305	288	- 15.0	- 5.6					1,468	SUN	1	288	202	1.43
LOCAL ROAD	CEDAR BLUFF RESERVOIR N. OF DAM	TREGO	188	248	248	31.9	0.0					1,494	SUN	1	248	157	1.58

Percent of Change for Reservoir Stations

- 7.9 - 1.4

Kansas City Stations

US-69	0.4 MILES S. OF 135TH ST.	JOHNSON			52,143		*	5,609	5- 6 pm	THU	12	60,756	FRI	27	52,143	55,527	.94
135TH	135TH E. OF MUR-LEN	JOHNSON	33,609	34,238	35,915	6.9	4.9	3,470	4- 5 pm	THU	26	42,727	FRI	27	35,915	37,612	.95
BLACKBOB	BLACKBOB RD. S. OF 139TH	JOHNSON		21,241	21,613		1.8	2,169	5- 6 pm	FRI	13	24,041	FRI	27	21,613	21,771	.99
I 435	0.8 MILES S. OF I - 70	WYANDOTTE	59,890	60,810	65,116	8.7	7.1	8,249	5- 6 pm	FRI	27	83,202	FRI	27	65,116	68,358	.95

Percent of Change for Kansas City Stations

8.1 5.5

Salina Stations

OHIO ST.	OHIO ST. N. OF WESTCHESTER DR.	SALINE		16,716	17,486		4.6	1,742	4- 5 pm	MON	30	20,495	FRI	13	17,486	19,097	.92
----------	--------------------------------	--------	--	--------	--------	--	-----	-------	---------	-----	----	--------	-----	----	--------	--------	-----

Percent of Change for Salina Stations

4.6

Topeka Stations

45TH ST. N. TOPEKA	45TH ST. E. OF INDIANA	SHAWNEE	7,427	8,534	2,688	- 63.8	- 68.5	312	5- 6 pm	TUE	24	3,379	FRI	6	2,688	2,813	.96
I 70	TOPEKA BLVD. NORTH OF PARAMORE ST.	SHAWNEE	18,649														
I 470	I 70 E. OF MACVICAR ST.	SHAWNEE	46,072	44,472	47,035	2.1	5.8	5,387	4- 5 pm	FRI	20	57,226	FRI	27	47,035	50,266	.94
US 40	I 470 N.W. OF HUNTOON	SHAWNEE	29,026	32,746	33,108	14.1	1.1	3,624	5- 6 pm	FRI	13	40,192	FRI	13	33,108	35,385	.94
US 75	US 40 E. OF TECUMSEH RD.	SHAWNEE	4,989	4,898	5,171	3.6	5.6	665	5- 6 pm	MON	23	6,261	FRI	27	5,171	5,597	.92
K 4	US 75 N. OF S.W. 57TH	SHAWNEE	14,274	15,767	14,578	2.1	- 7.5	1,665	7- 8 am	THU	19	16,986	FRI	20	14,578	15,970	.91
	1MI. S. OF JCT. US-24	SHAWNEE	8,981	8,305	8,954	- 0.3	7.8	1,084	7- 8 am	WED	18	10,615	FRI	27	8,954	9,574	.94

Percent of Change for Topeka Stations

.7 - 2.8

Month of September, 2013

Sparse Matrix Model

Date: 10-OCT-2013

---- Average Daily Traffic ----			Percent Change		---- Maximum Hour ----				--- Maximum Day ---			7 Day	5 Day	7 Day /	
for the Month			Month		Volume	Hour	DOW	Day	Volume	DOW	Day	Avg	Avg	5 Day	Avg
2011	2012	2013	2011	2012											

Route Description	Location Description	County
-------------------	----------------------	--------

Wichita Stations

K 96	K-96 E. OF GREENWICH RD.	SEDGWICK		22,936	24,026		4.8	2,973	7- 8 am	MON	9	28,622	FRI	6	24,026	26,053	.92
US 54	KELLOGG E. OF WEST ST.	SEDGWICK	84,314	89,227	90,651	7.5	1.6	9,038	4- 5 pm	THU	19	108,999	FRI	27	90,651	99,251	.91
13TH ST.	13TH ST W. OF PINECREST	SEDGWICK	14,375	13,772	12,031	- 16.3	- 12.6	1,248	5- 6 pm	WED	18	14,341	FRI	27	12,031	12,972	.93
ROCK RD.	ROCK RD. S. OF CENTRAL AVE	SEDGWICK	29,188	31,300	32,160	10.2	2.7	3,023	5- 6 pm	THU	26	38,067	FRI	27	32,160	33,652	.96
21ST ST.	21ST ST E. OF WASHINGTON	SEDGWICK	12,544	13,071	12,872	2.6	- 1.5	1,592	2- 3 pm	THU	26	15,628	FRI	20	12,872	13,800	.93
HILLSIDE ST.	HILLSIDE S. OF 15TH ST	SEDGWICK		12,119	10,278		- 15.2	1,045	5- 6 pm	TUE	3	12,471	THU	5	10,278	11,492	.89
I 235	I 235 S. OF MAPLE ST	SEDGWICK	46,171	47,287	47,891	3.7	1.3	4,929	5- 6 pm	FRI	20	56,264	FRI	20	47,891	51,483	.93
I 135	I-135 N. OF 21ST ST.	SEDGWICK	65,008	66,158	69,195	6.4	4.6	7,579	7- 8 am	TUE	17	83,259	FRI	13	69,195	78,038	.89

Percent of Change for Wichita Stations

5.2 1.1

NOTE: * Excluded from Percent Change Totals