

**KANSAS DEPARTMENT OF TRANSPORTATION  
BUREAU OF TRANSPORTATION PLANNING**

**OCTOBER 2013**

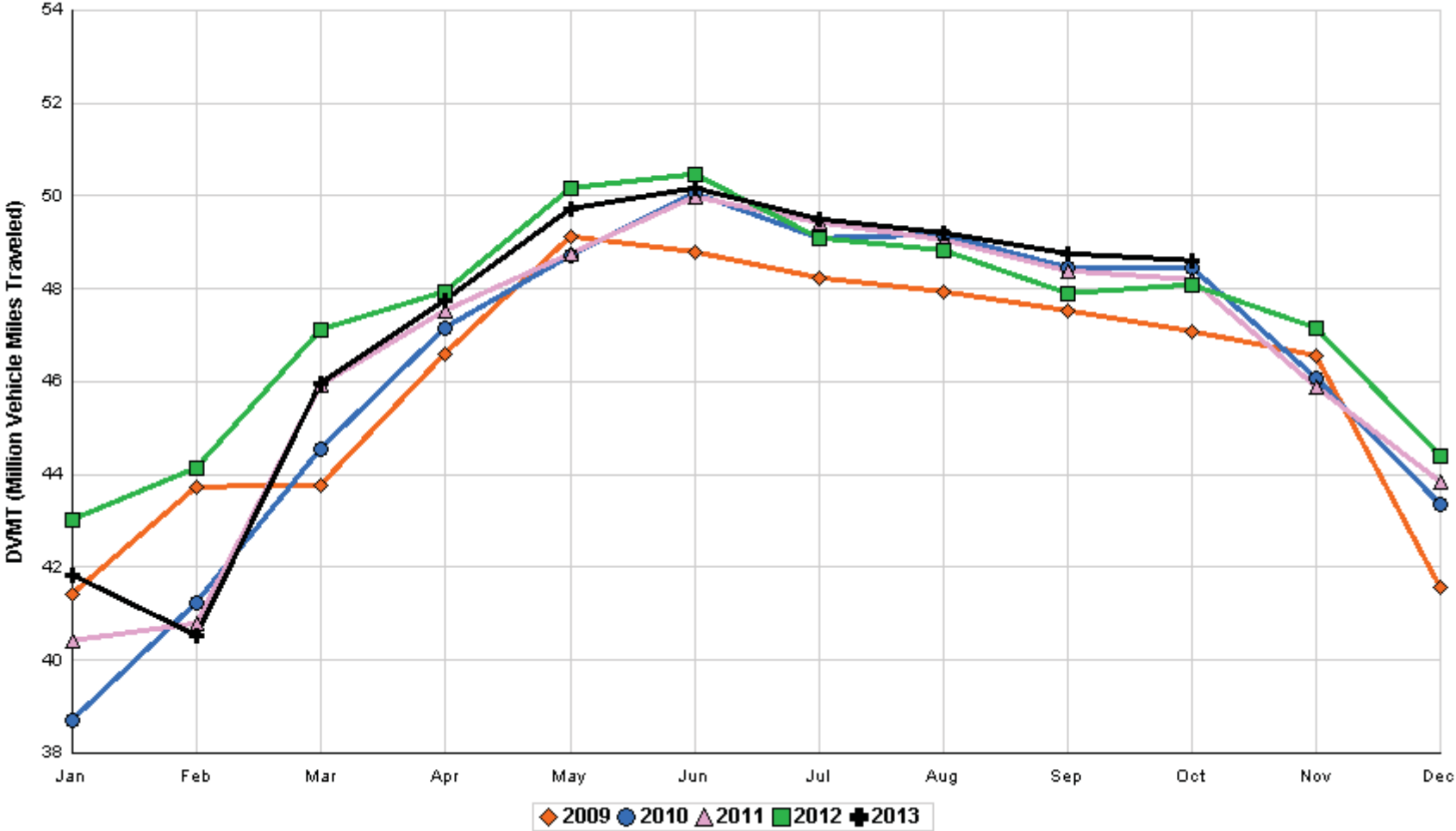
**SIGNIFICANT FACTS AND TRENDS**



Travel on the Kansas State Highway System				
	Daily Vehicle Miles		% Change	
	(In Millions )		2012 to 2013	
Month	2012	2013	Month	Year
Jan	43.023	41.827	- 2.8	- 2.8
Feb	44.153	40.524	- 8.2	- 5.5
Mar	47.116	45.976	- 2.4	- 4.4
Apr	47.916	47.741	- 0.4	- 3.4
May	50.155	49.709	- 0.9	- 2.8
Jun	50.464	50.184	- 0.6	- 2.4
Jul	49.090	49.502	0.8	- 1.9
Aug	48.829	49.198	0.8	- 1.6
Sep	47.889	48.754	1.8	- 1.2
Oct	48.089	48.604	1.1	- 1.0
Nov	47.139			
Dec	44.405			
Average	47.356			

**Contact the Traffic and Field Operations Unit with questions or requests at:  
(785)-296-3841 or E-mail: [TrafficCounts@ksdot.org](mailto:TrafficCounts@ksdot.org)  
The Monthly Average Daily Traffic (MADT) is Calculated Utilizing the  
Day-Of-Week (DOW) Method. Missing Traffic Count Data will Not be Estimated  
Therefore Station Summary Data will be Blank where Data is Not Available.**

Total Travel on Kansas State Highway System 2009 - 2013



Month of October, 2013

Sparse Matrix Model

Date: 20-NOV-2013

Route Description	Location Description	County	Average Daily Traffic for the Month			Percent Change Month		Maximum Hour				Maximum Day			7 Day Avg	5 Day Avg	7 Day / 5 Day Avg
			2011	2012	2013	2011	2012	Volume	Hour	DOW	Day	Volume	DOW	Day			
<b>Rural State Highways for District 1</b>																	
US-75	1.2 MILES N. OF US-36 I.C.	BROWN	4,927	3,744	3,910	-20.6	4.4	428	4-5 pm	THU	10	4,728	FRI	11	3,910	4,082	.96
US 24	1.5 MILES N.E. OF LAWRENCE	DOUGLAS	7,062	6,576	6,733	-4.7	2.4	819	4-5 pm	FRI	4	7,948	FRI	4	6,733	6,890	.98
US 56	4 MILES E. OF OVERBROOK	DOUGLAS	2,121	2,032	2,179	2.7	7.2	285	10-11 am	SAT	19	3,343	SAT	19	2,179	2,096	1.04
US 75	5.8 MILES N. OF HOLTON	JACKSON	6,362	5,686	5,705	-10.3	0.3	627	5-6 pm	FRI	4	6,917	FRI	11	5,705	5,769	.99
K 10	0.2 MILES E. OF RS. 346 INTCHG.	JOHNSON	33,352	32,265	33,657	0.9	4.3	4,116	5-6 pm	TUE	29	40,437	FRI	4	33,657	34,695	.97
K 99	2.9 MILES S. OF EMPORIA	LYON	4,010	3,781	3,874	-3.4	2.5	454	7-8 am	MON	28	4,604	FRI	11	3,874	4,099	.95
US 36	13 MILES E. OF MARYSVILLE	MARSHALL	2,892	2,464	2,423	-16.2	-1.7	273	5-6 pm	FRI	25	2,987	FRI	11	2,423	2,495	.97
K 68	0.15 MILES E. OF JCT K 268	OSAGE	2,694	2,528	2,117	-21.4	-16.3	289	5-6 pm	FRI	25	2,635	FRI	25	2,117	2,101	1.01
K 268	0.1 MILES E. OF US 75	OSAGE	2,895	2,724													
K 18	0.7 MILES N.E. OF OGDEN	RILEY															
US 24	4 MILES N. OF MANHATTAN	RILEY	7,288	6,970	6,703	-8.0	-3.8	930	6-7 pm	SAT	12	8,247	FRI	11	6,703	6,655	1.01
US 24	1 MILE N.W. OF ROSSVILLE	SHAWNEE	4,866	4,055	4,874	0.2	20.2	587	5-6 pm	MON	7	5,688	FRI	11	4,874	5,191	.94
I 70	4.7 MILES E. OF K 30 INTCHG. (MAPLE HILL)	WABAUNSEE	19,863	20,666	20,814	4.8	0.7	2,623	11-12 pm	SAT	12	28,995	SAT	12	20,814	19,518	1.07

Percent of Change for District 1 Stations

- 2.6 2.4

Rural State Highways for District 2

K 9	5.8 MILES E. OF CLIFTON	CLAY	358	364	363	1.4	-0.3	52	5-6 pm	TUE	8	478	FRI	11	363	393	.92
K 15	3.3 MILES N. OF CLAY CENTER	CLAY	1,920	1,857	1,854	-3.4	-0.2	215	5-6 pm	FRI	11	2,244	FRI	11	1,854	1,997	.93
I 70	W. OF K-232 INTCHG. (WILSON)	ELLSWORTH	9,739		10,264	5.4		1,079	4-5 pm	SUN	27	12,630	FRI	11	10,264	10,021	1.02
K 141	2.8 MILES S. OF KANOPOLIS DAM	ELLSWORTH		405	502		24.0	80	7-8 am	MON	28	680	SAT	12	502	481	1.04
K 18	1.8 MILES W. OF JUNCTION CITY	GEARY	1,426	1,348	1,527	7.1	13.3	215	3-4 pm	FRI	4	1,961	FRI	25	1,527	1,649	.93
I 70	4.5 MILES S.W. OF JUNCTION CITY	GEARY	16,508	16,167	16,249	-1.6	0.5	1,736	4-5 pm	FRI	4	19,892	FRI	4	16,249	15,789	1.03
US 77	4 MILES S. OF JUNCTION CITY	GEARY	3,995	3,946	3,957	-1.0	0.3	634	11-12 pm	SAT	26	5,811	SAT	12	3,957	3,798	1.04
US 36	1 MILE E. OF MANKATO	JEWELL	1,861	1,801	1,874	0.7	4.1	235	6-7 pm	FRI	4	2,525	FRI	4	1,874	1,993	.94
K 18	0.5 MILES W. OF LINCOLN	LINCOLN	1,140	1,020	995	-12.7	-2.5	126	11-12 pm	SAT	19	1,209	THU	10	995	1,047	.95
I 135	0.5 MILES N. OF US 56 INTCHG. (MCPHERSON)	MCPHERSON	12,810	12,591	13,006	1.5	3.3	1,408	5-6 pm	FRI	4	16,142	FRI	4	13,006	12,755	1.02
K 14	3 MILES S. OF BELOIT	MITCHELL	913	843	907	-0.7	7.6	125	5-6 pm	FRI	4	1,166	FRI	25	907	990	.92
US 81	2.5 MILES S. OF BELLEVILLE	REPUBLIC	5,277	4,829	4,946	-6.3	2.4	475	3-4 pm	SUN	13	6,022	FRI	4	4,946	5,061	.98

Percent of Change for District 2 Stations

.0 2.2

Rural State Highways for District 3

US 83	6.2 MILES S. OF OAKLEY	LOGAN	2,048	1,881	1,833	-10.5	-2.6	191	5-6 pm	THU	24	2,240	THU	24	1,833	1,964	.93
US 36	9.5 MILES W. OF NORTON	NORTON	1,019	945	944	-7.4	-0.1	103	4-5 pm	FRI	18	1,202	THU	3	944	1,014	.93
US 183	1.2 MILES S. OF PHILLIPSBURG	PHILLIPS	2,411	2,202	2,203	-8.6	0.0	252	5-6 pm	FRI	11	2,677	FRI	18	2,203	2,315	.95
K 23	14.5 MILES S. OF HOXIE	SHERIDAN	824	879	862	4.6	-1.9	126	3-4 pm	THU	10	1,159	FRI	11	862	934	.92
I 70	2.2 MI. E OF KANORADO EXIT	SHERMAN	7,877	6,978	7,629	-3.1	9.3	777	2-3 pm	SUN	20	9,259	THU	17	7,629	7,644	1.00
US 24	7.3 MILES E. OF COLBY	THOMAS	1,836	1,791	1,832	-0.2	2.3	198	6-7 pm	FRI	11	2,248	FRI	11	1,832	1,967	.93
K 25	1.8 MILES S. OF COLBY	THOMAS	914	803	737	-19.4	-8.2	86	7-8 am	MON	7	1,038	WED	2	737	814	.91
I 70	1 MILE W. OF WAKEENEY	TREGO	8,716	8,772	9,089	4.3	3.6	860	3-4 pm	SUN	13	11,135	FRI	11	9,089	9,140	.99
US 40	1.4 MILES E. OF KAN-COLO ST. LINE	WALLACE	572	520	526	-8.0	1.2	66	12-1 pm	TUE	1	703	THU	17	526	575	.91

Percent of Change for District 3 Stations

- 2.1 3.6

Month of October, 2013

Sparse Matrix Model

Date: 20-NOV-2013

Route Description	Location Description	County	Average Daily Traffic for the Month			Percent Change Month		Maximum Hour				Maximum Day			7 Day Avg	5 Day Avg	7 Day / 5 Day Avg
			2011	2012	2013	2011	2012	Volume	Hour	DOW	Day	Volume	DOW	Day			
<b>Rural State Highways for District 4</b>																	
US 54	3 MILES W. OF IOLA	ALLEN	2,949	2,781	2,908	- 1.4	4.6	305	5- 6 pm	FRI	4	3,559	FRI	4	2,908	3,027	.96
US 169	1 MILE N. OF GREELEY	ANDERSON	3,432		3,342	- 2.6		352	4- 5 pm	FRI	25	4,166	FRI	11	3,342	3,378	.99
US 69	2 MILES N. OF FT SCOTT	BOURBON	5,821		6,688	14.9		780	4- 5 pm	FRI	18	8,237	FRI	18	6,688	6,512	1.03
US 166	0.5 MILES W. OF NIOTAZE	CHAUTAUQUA	2,522	2,493	2,459	- 2.5	- 1.4	264	4- 5 pm	FRI	25	3,037	FRI	4	2,459	2,510	.98
I 35	2 MILES W. OF K- 131 INTCHG. N. OF LEBO	COFFEY	12,975	12,846	13,713	5.7	6.7	1,737	5- 6 pm	SUN	13	16,741	FRI	11	13,713	13,169	1.04
US 59	4.3 MILES S. OF OTTAWA	FRANKLIN	6,006	6,009	6,034	0.5	0.4	685	5- 6 pm	FRI	11	7,486	FRI	11	6,034	6,193	.97
I 35	2 MILES N.E. OF THE WELLSVILLE INTCHG.	FRANKLIN	19,930	20,186	20,822	4.5	3.2	2,174	4- 5 pm	FRI	11	24,880	FRI	11	20,822	20,861	1.00
US 400	3 MILES E. OF PARSONS	LABETTE	3,740	3,582	3,853	3.0	7.6	400	3- 4 pm	FRI	18	4,915	FRI	11	3,853	3,935	.98
US 59	4 MILES S. OF ERIE	NEOSHO	3,038	2,935	3,054	0.5	4.1	344	7- 8 am	WED	16	3,787	FRI	25	3,054	3,327	.92
US 169	1 MILE N. OF THAYER	NEOSHO	4,270	4,124	4,639	8.6	12.5	551	5- 6 pm	FRI	4	5,876	FRI	11	4,639	4,814	.96
US 75	1 MILE N. OF YATES CENTER	WOODSON	2,732	2,672	2,736	0.1	2.4	298	4- 5 pm	FRI	4	3,504	FRI	25	2,736	2,718	1.01
K 105	2 MILES N. OF TORONTO	WOODSON	598	607	577	- 3.5	- 4.9	77	1- 2 pm	SUN	6	698	SAT	12	577	571	1.01

4.1 4.4

Percent of Change for District 4 Stations

Rural State Highways for District 5

US 56	5.5 MILES E. OF GREAT BEND	BARTON	5,136	5,049	5,307	3.3	5.1	560	5- 6 pm	FRI	25	6,388	FRI	11	5,307	5,619	.94
US 77	2 MILES N. OF EL DORADO	BUTLER	2,849	2,770	2,875	0.9	3.8	397	1- 2 pm	SUN	20	3,996	SAT	12	2,875	2,685	1.07
US 400	1.5 MILES E. OF LEON	BUTLER	4,386	4,639	4,963	13.2	7.0	835	4- 5 pm	SUN	27	8,273	SUN	27	4,963	4,792	1.04
US 77	3.7 MILES N. OF ARKANSAS CITY	COWLEY		10,765	11,050		2.6	1,136	3- 4 pm	FRI	4	13,309	FRI	11	11,050	11,856	.93
US 160	6.2 MILES E. OF ATTICA	HARPER	1,372	1,507	1,568	14.3	4.0	171	5- 6 pm	THU	3	1,973	THU	3	1,568	1,671	.94
US 50	3 MILES N.E. OF NEWTON	HARVEY	6,552	6,344	6,418	- 2.0	1.2	669	4- 5 pm	FRI	11	7,622	FRI	11	6,418	6,401	1.00
US 54	5.8 MILES W. OF KINGMAN	KINGMAN	5,028	5,336	4,907	- 2.4	- 8.0	493	4- 5 pm	FRI	25	5,760	FRI	25	4,907	4,921	1.00
US 54	1.5 MILES W. OF HAVILAND	KIOWA	5,228	5,302	5,350	2.3	0.9	473	4- 5 pm	FRI	4	6,209	FRI	4	5,350	5,473	.98
US 183	7 MILES S. OF GREENSBURG	KIOWA	931	1,018	952	2.3	- 6.5	113	6- 7 pm	FRI	4	1,213	FRI	25	952	1,043	.91
US 56	5 MILES S.W. OF LARNED	PAWNEE	2,237	2,203	2,222	- 0.7	0.9	237	4- 5 pm	FRI	25	2,732	FRI	25	2,222	2,296	.97
K 61	5 MILES S.W. OF ARLINGTON	RENO	2,085	2,115	2,155	3.4	1.9	240	5- 6 pm	FRI	11	2,485	FRI	11	2,155	2,178	.99
K 14	1 MILE N. OF LYONS	RICE	1,472	1,376	1,329	- 9.7	- 3.4	141	5- 6 pm	FRI	11	1,644	FRI	11	1,329	1,415	.94
K 42	3 MILES N.E. OF VIOLA	SEDGWICK		4,561	4,613		1.1	530	4- 5 pm	FRI	25	5,629	FRI	25	4,613	4,933	.94
US 281	0.5 MILES S. OF ST. JOHN	STAFFORD	2,454	2,403	2,470	0.7	2.8	268	4- 5 pm	FRI	4	2,994	FRI	4	2,470	2,656	.93
US 81	4.1 MILES S. OF WELLINGTON	SUMNER	1,741	1,793	1,613	- 7.4	- 10.0	168	4- 5 pm	THU	17	1,828	SAT	19	1,613	1,680	.96

1.6 1.1

Percent of Change for District 5 Stations

Rural State Highways for District 6

US 83	8.2 MILES S. OF GARDEN CITY	FINNEY	4,190	4,215	4,404	5.1	4.5	442	4- 5 pm	TUE	22	5,030	THU	24	4,404	4,686	.94
US 50	4.5 MILES W. OF DODGE CITY	FORD	6,059	6,507	5,803	- 4.2	- 10.8	529	5- 6 pm	FRI	4	6,713	FRI	25	5,803	6,119	.95
US 400	4.5 MILES W. OF DODGE CITY	FORD	1,093	1,177	1,128	3.2	- 4.2	121	5- 6 pm	WED	23	1,409	THU	17	1,128	1,262	.89
K 25	2.5 MILES N. OF ULYSSES	GRANT	1,538	1,508	1,719	11.8	14.0	203	4- 5 pm	MON	14	2,148	TUE	1	1,719	1,885	.91
K 27	15 MILES N OF TRIBUNE	GREELEY	811	681	719	- 11.3	5.6	105	10-11 am	TUE	8	943	TUE	8	719	805	.89
US 50	0.8 MILES E. OF KAN-COLO ST. LINE	HAMILTON	1,521	1,524	1,517	- 0.3	- 0.5	148	3- 4 pm	TUE	15	1,862	THU	17	1,517	1,552	.98
US 283	8.3 MILES N. OF JETMORE	HODGEMAN	918	1,010	890	- 3.1	- 11.9	103	4- 5 pm	THU	3	1,104	FRI	11	890	989	.90
US 54	3.7 MILES W. OF MEADE	MEADE		3,793	3,942		3.9	351	3- 4 pm	THU	17	4,327	FRI	11	3,942	4,014	.98
K 96	12 MILES W. OF SCOTT CITY	WICHITA	1,351	1,270	1,281	- 5.2	0.9	136	5- 6 pm	TUE	29	1,606	THU	17	1,281	1,412	.91

- .1 - 1.3

Percent of Change for District 6 Stations

Month of October, 2013

Sparse Matrix Model

Date: 20-NOV-2013

---- Average Daily Traffic ----  
for the Month

Percent Change  
Month

---- Maximum Hour ----  
Volume Hour DOW Day

--- Maximum Day ---  
Volume DOW Day

7 Day Avg  
5 Day Avg  
7 Day / 5 Day Avg

Route Description Location Description County

2011 2012 2013 2011 2012

Rural Secondary Stations

RS 61	6.5 MILES S.W. OF HIAWATHA	BROWN	227	218	271	19.4	24.3	74	3- 4 pm	FRI	4	372	SAT	5	271	286	.95
RS 463	0.7 MILES S.W. OF BELOIT	MITCHELL	258	255	267	3.5	4.7	49	6- 7 pm	FRI	4	422	FRI	4	267	291	.92
RS 272	2 MILES S. OF QUINTER	GOVE	392	352	370	- 5.6	5.1	46	5- 6 pm	THU	10	441	THU	10	370	388	.95
RS 13	0.5 MILES N. OF BUSH CITY	ANDERSON	360	312	477	32.5	52.9	62	7- 8 am	TUE	22	596	THU	3	477	507	.94
RS 2316	3 MILES E. OF PARSONS	LABETTE	1,896	1,832	1,796	- 5.3	- 2.0	221	4- 5 pm	THU	17	2,201	FRI	25	1,796	1,940	.93
RS 303	0.8 MI. S. OF US-54 & K17 JCT. (MIDWAY)	KINGMAN	299	295	323	8.0	9.5	47	4- 5 pm	SAT	19	435	TUE	29	323	331	.98
RS 251	6 MILES W. OF FORD	FORD	414	467	490	18.4	4.9	73	5- 6 pm	FRI	25	643	THU	24	490	497	.99

Percent of Change for Rural Secondary Stations

3.8 7.0

Reservoir Stations

K 237	1.5 MILES N. OF JCT. US 24	JEFFERSON	1,171	1,070	1,119	- 4.4	4.6	144	3- 4 pm	SAT	12	1,489	SAT	19	1,119	1,077	1.04
LOCAL ROAD	KANOPOLIS RESERVOIR N. OF DAM	ELLSWORTH	149	107	140	- 6.0	30.8					273	SAT	26	140	117	1.20
LOCAL ROAD	KANOPOLIS RESERVOIR S. OF DAM	ELLSWORTH	217	150	127	- 41.5	- 15.3					244	SAT	26	127	103	1.23
LOCAL ROAD	CEDAR BLUFF RESERVOIR N. OF DAM	TREGO	74	76	99	33.8	30.3					219	SUN	6	99	68	1.46

Percent of Change for Reservoir Stations

- 7.8 5.8

Kansas City Stations

US-69	0.4 MILES S. OF 135TH ST.	JOHNSON			53,649		*	5,600	5- 6 pm	WED	9	61,650	FRI	11	53,649	56,242	.95
135TH	135TH E. OF MUR-LEN	JOHNSON	34,919	34,117	36,211	3.7	6.1	3,485	3- 4 pm	FRI	25	41,738	FRI	11	36,211	37,948	.95
BLACKBOB	BLACKBOB RD. S. OF 139TH	JOHNSON		21,224	20,843		- 1.8	2,130	5- 6 pm	THU	10	23,913	SAT	5	20,843	20,964	.99
I 435	0.8 MILES S. OF I - 70	WYANDOTTE	59,039	63,107	66,566	12.7	5.5	7,711	4- 5 pm	FRI	11	81,954	FRI	11	66,566	69,730	.95

Percent of Change for Kansas City Stations

9.4 4.4

Salina Stations

OHIO ST.	OHIO ST. N. OF WESTCHESTER DR.	SALINE		17,070	17,247		1.0	1,777	4- 5 pm	THU	31	20,206	FRI	11	17,247	18,952	.91
----------	--------------------------------	--------	--	--------	--------	--	-----	-------	---------	-----	----	--------	-----	----	--------	--------	-----

Percent of Change for Salina Stations

1.0

Topeka Stations

45TH ST.	45TH ST. E. OF INDIANA	SHAWNEE	7,317	7,884	2,859	- 60.9	- 63.7	411	4- 5 pm	FRI	4	3,457	FRI	11	2,859	3,001	.95
N. TOPEKA	TOPEKA BLVD. NORTH OF PARAMORE ST.	SHAWNEE	19,406		16,355	- 15.7		1,642	12- 1 pm	FRI	25	19,200	FRI	25	16,355	17,896	.91
I 70	I 70 E. OF MACVICAR ST.	SHAWNEE	43,831		47,041	7.3		5,317	4- 5 pm	FRI	4	57,429	FRI	11	47,041	50,082	.94
I 470	I 470 N.W. OF HUNTOON	SHAWNEE		32,347	33,687		4.1	3,687	5- 6 pm	FRI	25	40,767	FRI	25	33,687	35,868	.94
US 40	US 40 E. OF TECUMSEH RD.	SHAWNEE	4,973	4,881	4,799	- 3.5	- 1.7	706	5- 6 pm	WED	2	5,859	THU	10	4,799	5,253	.91
US 75	US 75 N. OF S.W. 57TH	SHAWNEE	14,285	15,599	14,280	0.0	- 8.5	1,642	7- 8 am	THU	10	16,459	FRI	25	14,280	15,642	.91
K 4	1MI. S. OF JCT. US-24	SHAWNEE	9,121	9,235	8,938	- 2.0	- 3.2	1,056	7- 8 am	WED	9	10,574	FRI	11	8,938	9,488	.94

Percent of Change for Topeka Stations

- 4.7 - 7.7

Month of October, 2013

Sparse Matrix Model

Date: 20-NOV-2013

---- Average Daily Traffic ----			Percent Change		---- Maximum Hour ----				--- Maximum Day ---			7 Day	5 Day	7 Day /	
for the Month			Month		Volume	Hour	DOW	Day	Volume	DOW	Day	Avg	Avg	5 Day	Avg
2011	2012	2013	2011	2012											

Route Description	Location Description	County
-------------------	----------------------	--------

Wichita Stations

K 96	K-96 E. OF GREENWICH RD.	SEDGWICK	23,586	23,367	23,749	0.7	1.6	2,806	7- 8 am	THU	10	27,565	FRI	25	23,749	25,819	.92
US 54	KELLOGG E. OF WEST ST.	SEDGWICK	87,583	93,024	92,844	6.0	- 0.2	9,237	4- 5 pm	THU	31	110,828	FRI	25	92,844	101,515	.91
13TH ST.	13TH ST W. OF PINECREST	SEDGWICK	14,517	13,498	12,112	- 16.6	- 10.3	1,306	5- 6 pm	TUE	1	13,900	THU	31	12,112	13,084	.93
ROCK RD.	ROCK RD. S. OF CENTRAL AVE	SEDGWICK	29,908	31,815	32,216	7.7	1.3	3,096	5- 6 pm	FRI	25	37,576	FRI	25	32,216	33,608	.96
21ST ST.	21ST ST E. OF WASHINGTON	SEDGWICK	12,523	13,465	12,858	2.7	- 4.5	1,223	4- 5 pm	WED	16	15,360	THU	3	12,858	13,773	.93
HILLSIDE ST.	HILLSIDE S. OF 15TH ST	SEDGWICK		12,132	10,291		- 15.2	1,033	5- 6 pm	MON	7	12,219	TUE	1	10,291	11,502	.89
I 235	I 235 S. OF MAPLE ST	SEDGWICK	46,779	47,988	47,488	1.5	- 1.0	4,938	5- 6 pm	TUE	15	56,230	FRI	25	47,488	51,028	.93
I 135	I-135 N. OF 21ST ST.	SEDGWICK	66,744	67,435	69,283	3.8	2.7	7,672	7- 8 am	TUE	22	81,726	FRI	25	69,283	78,297	.88

Percent of Change for Wichita Stations

3.2 - .6

NOTE: \* Excluded from Percent Change Totals