

**KANSAS DEPARTMENT OF TRANSPORTATION  
BUREAU OF TRANSPORTATION PLANNING**

**NOVEMBER 2013**

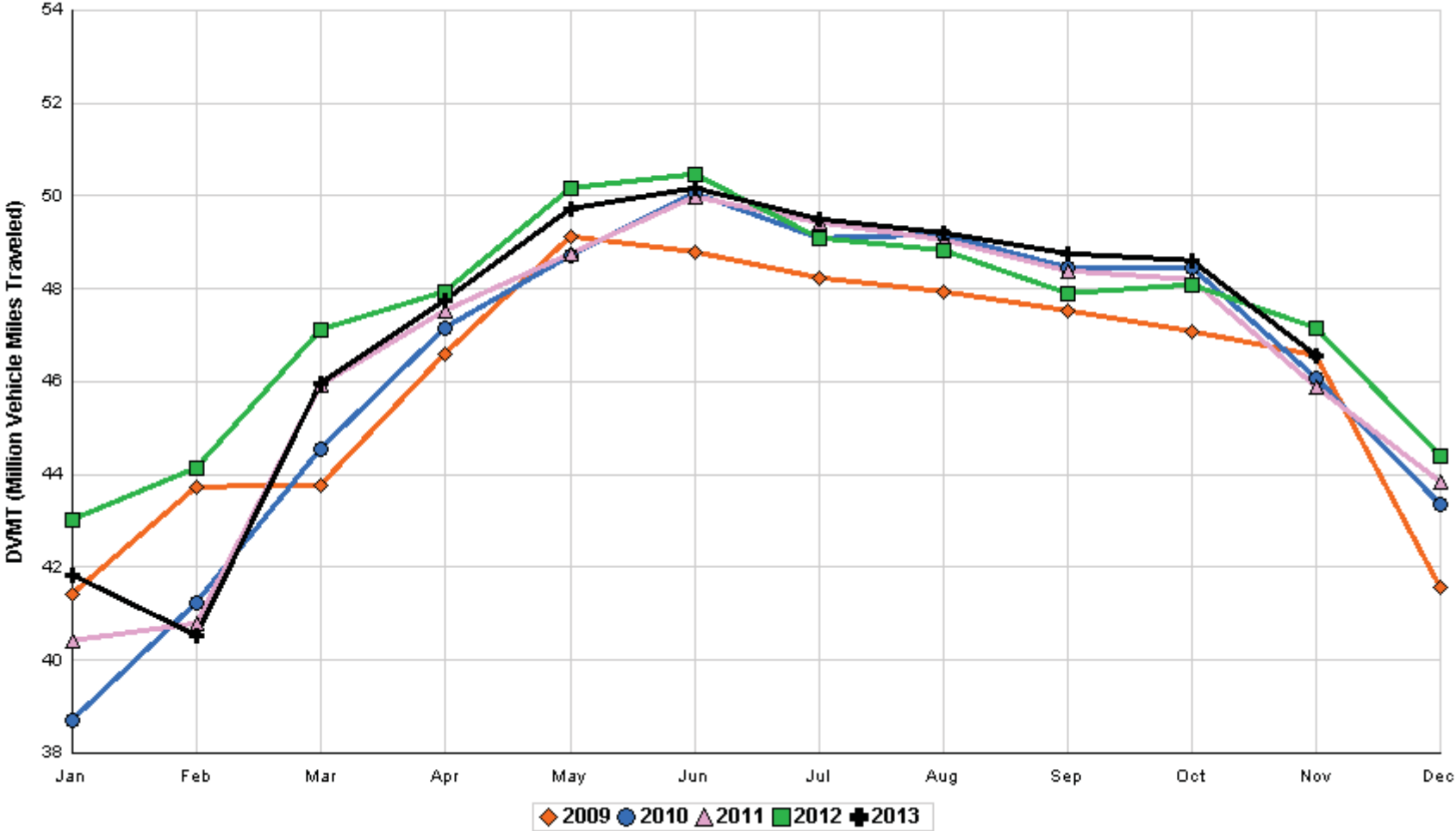
**SIGNIFICANT FACTS AND TRENDS**



Travel on the Kansas State Highway System				
	Daily Vehicle Miles		% Change	
	(In Millions )		2012 to 2013	
Month	2012	2013	Month	Year
Jan	43.023	41.827	- 2.8	- 2.8
Feb	44.153	40.524	- 8.2	- 5.5
Mar	47.116	45.976	- 2.4	- 4.4
Apr	47.916	47.741	- 0.4	- 3.4
May	50.155	49.709	- 0.9	- 2.8
Jun	50.464	50.184	- 0.6	- 2.4
Jul	49.090	49.502	0.8	- 1.9
Aug	48.829	49.198	0.8	- 1.6
Sep	47.889	48.754	1.8	- 1.2
Oct	48.089	48.604	1.1	- 1.0
Nov	47.139	46.555	- 1.2	- 1.0
Dec	44.405			
Average	47.356			

**Contact the Traffic and Field Operations Unit with questions or requests at:  
(785)-296-3841 or E-mail: [TrafficCounts@ksdot.org](mailto:TrafficCounts@ksdot.org)  
The Monthly Average Daily Traffic (MADT) is Calculated Utilizing the  
Day-Of-Week (DOW) Method. Missing Traffic Count Data will Not be Estimated  
Therefore Station Summary Data will be Blank where Data is Not Available.**

Total Travel on Kansas State Highway System 2009 - 2013



Date: 18-DEC-2013

Month of November, 2013

Sparse Matrix Model

Route Description	Location Description	County	Average Daily Traffic for the Month			Percent Change Month		Maximum Hour				Maximum Day			7 Day Avg	5 Day Avg	7 Day / 5 Day Avg
			2011	2012	2013	2011	2012	Volume	Hour	DOW	Day	Volume	DOW	Day			
<b>Rural State Highways for District 1</b>																	
US-75	1.2 MILES N. OF US-36 I.C.	BROWN	3,632	3,735	3,827	5.4	2.5	507	2- 3 pm	WED	27	5,770	WED	27	3,827	4,017	.95
US 24	1.5 MILES N.E. OF LAWRENCE	DOUGLAS	6,177	6,117	6,165	- 0.2	0.8	742	4- 5 pm	FRI	8	7,476	FRI	8	6,165	6,441	.96
US 56	4 MILES E. OF OVERBROOK	DOUGLAS	1,904	1,874	2,044	7.4	9.1	315	11-12 pm	THU	28	2,456	FRI	15	2,044	2,063	.99
US 75	5.8 MILES N. OF HOLTON	JACKSON	5,913	5,756	5,562	- 5.9	- 3.4	654	4- 5 pm	FRI	15	7,333	FRI	1	5,562	5,707	.97
K 10	0.2 MILES E. OF RS. 346 INTCHG.	JOHNSON	30,703	30,602	31,473	2.5	2.8	4,229	5- 6 pm	FRI	8	40,441	FRI	8	31,473	33,321	.94
K 99	2.9 MILES S. OF EMPORIA	LYON	3,617	3,681	3,682	1.8	0.0	435	5- 6 pm	FRI	8	4,653	FRI	1	3,682	3,924	.94
US 36	13 MILES E. OF MARYSVILLE	MARSHALL	2,483	2,452	2,330	- 6.2	- 5.0	276	5- 6 pm	FRI	15	2,986	FRI	15	2,330	2,428	.96
K 68	0.15 MILES E. OF JCT K 268	OSAGE	2,490	2,433	2,072	- 16.8	- 14.8	268	11-12 pm	THU	28	2,494	THU	28	2,072	2,089	.99
K 268	0.1 MILES E. OF US 75	OSAGE	2,687	2,651													
K 18	0.7 MILES N.E. OF OGDEN	RILEY															
US 24	4 MILES N. OF MANHATTAN	RILEY	6,750	6,560	6,448	- 4.5	- 1.7	851	6- 7 pm	SAT	16	8,242	SAT	2	6,448	6,437	1.00
US 24	1 MILE N.W. OF ROSSVILLE	SHAWNEE	4,198	3,884	4,179	- 0.5	7.6	496	5- 6 pm	FRI	1	5,293	FRI	8	4,179	4,480	.93
I 70	4.7 MILES E. OF K 30 INTCHG. (MAPLE HILL)	WABAUNSEE	20,224	20,334	20,214	0.0	- 0.6	2,736	3- 4 pm	SAT	23	29,617	WED	27	20,214	19,361	1.04

Percent of Change for District 1 Stations

- .1 .6

Rural State Highways for District 2

K 9	5.8 MILES E. OF CLIFTON	CLAY	314	337	347	10.5	3.0	52	4- 5 pm	MON	18	451	MON	11	347	379	.92
K 15	3.3 MILES N. OF CLAY CENTER	CLAY	1,831	1,842	1,810	- 1.1	- 1.7	218	7- 8 am	WED	13	2,172	FRI	15	1,810	1,945	.93
I 70	W. OF K-232 INTCHG. (WILSON)	ELLSWORTH		10,669	9,897		- 7.2	1,548	4- 5 pm	SAT	30	18,493	WED	27	9,897	9,585	1.03
K 141	2.8 MILES S. OF KANOPOLIS DAM	ELLSWORTH		359	433		20.6	75	7- 8 am	FRI	8	632	SAT	9	433	431	1.00
K 18	1.8 MILES W. OF JUNCTION CITY	GEARY	1,317	1,250	1,321	0.3	5.7	211	7- 8 am	TUE	5	1,713	FRI	8	1,321	1,423	.93
I 70	4.5 MILES S.W. OF JUNCTION CITY	GEARY	15,981	15,926	15,578	- 2.5	- 2.2	1,978	3- 4 pm	SAT	23	23,835	WED	27	15,578	15,293	1.02
US 77	4 MILES S. OF JUNCTION CITY	GEARY	3,903	3,892	3,871	- 0.8	- 0.5	676	4- 5 pm	SAT	23	5,688	SAT	23	3,871	3,755	1.03
US 36	1 MILE E. OF MANKATO	JEWELL	1,837	1,863	1,744	- 5.1	- 6.4	224	3- 4 pm	FRI	8	2,491	FRI	8	1,744	1,847	.94
K 18	0.5 MILES W. OF LINCOLN	LINCOLN	1,108	954	961	- 13.3	0.7	131	3- 4 pm	FRI	8	1,265	FRI	8	961	1,025	.94
I 135	0.5 MILES N. OF US 56 INTCHG. (MCPHERSON)	MCPHERSON	12,768	12,888	12,881	0.9	- 0.1	2,015	4- 5 pm	SAT	30	19,983	WED	27	12,881	12,668	1.02
K 14	3 MILES S. OF BELOIT	MITCHELL	842	818	804	- 4.5	- 1.7	114	4- 5 pm	FRI	15	1,068	FRI	8	804	872	.92
US 81	2.5 MILES S. OF BELLEVILLE	REPUBLIC	5,244	5,048	4,905	- 6.5	- 2.8	655	2- 3 pm	WED	27	7,893	WED	27	4,905	4,992	.98

Percent of Change for District 2 Stations

- 2.0 - 2.3

Rural State Highways for District 3

US 83	6.2 MILES S. OF OAKLEY	LOGAN	2,034	1,828	1,772	- 12.9	- 3.1	213	10-11 am	WED	27	2,485	WED	27	1,772	1,923	.92
US 36	9.5 MILES W. OF NORTON	NORTON	953	942	916	- 3.9	- 2.8	121	4- 5 pm	TUE	26	1,150	TUE	26	916	963	.95
US 183	1.2 MILES S. OF PHILLIPSBURG	PHILLIPS	2,351	2,226	2,151	- 8.5	- 3.4	247	4- 5 pm	FRI	8	2,735	WED	27	2,151	2,287	.94
K 23	14.5 MILES S. OF HOXIE	SHERIDAN	834	852	848	1.7	- 0.5	107	4- 5 pm	FRI	8	1,182	WED	27	848	933	.91
I 70	2.2 MI. E OF KANORADO EXIT	SHERMAN	7,451	7,834	7,296	- 2.1	- 6.9	1,168	2- 3 pm	SAT	30	14,436	WED	27	7,296	7,159	1.02
US 24	7.3 MILES E. OF COLBY	THOMAS	1,793	1,842	1,804	0.6	- 2.1	212	5- 6 pm	FRI	8	2,427	WED	27	1,804	1,955	.92
K 25	1.8 MILES S. OF COLBY	THOMAS	810	799	648	- 20.0	- 18.9	80	4- 5 pm	MON	11	867	MON	11	648	728	.89
I 70	1 MILE W. OF WAKEENEY	TREGO	8,530	8,869	8,616	1.0	- 2.9	1,426	2- 3 pm	SAT	30	16,289	WED	27	8,616	8,544	1.01
US 40	1.4 MILES E. OF KAN-COLO ST. LINE	WALLACE	533	517	486	- 8.8	- 6.0	70	5- 6 pm	TUE	26	675	WED	27	486	522	.93

Percent of Change for District 3 Stations

- 3.0 - 4.6

Month of November, 2013

Sparse Matrix Model

Date: 18-DEC-2013

Route Description	Location Description	County	Average Daily Traffic for the Month			Percent Change Month		Maximum Hour			Maximum Day			7 Day Avg	5 Day Avg	7 Day / 5 Day Avg	
			2011	2012	2013	2011	2012	Volume	Hour	DOW	Day	Volume	DOW				Day
<b>Rural State Highways for District 4</b>																	
US 54	3 MILES W. OF IOLA	ALLEN	2,784	2,721	2,700	- 3.0	- 0.8	293	2- 3 pm	WED	27	3,439	FRI	8	2,700	2,852	.95
US 169	1 MILE N. OF GREELEY	ANDERSON	3,375	3,030	3,144	- 6.8	3.8	426	10-11 am	THU	28	4,595	WED	27	3,144	3,307	.95
US 69	2 MILES N. OF FT SCOTT	BOURBON			6,293			818	10-11 am	THU	28	8,558	WED	27	6,293	6,424	.98
US 166	0.5 MILES W. OF NIOTAZE	CHAUTAUQUA	2,421	2,485	2,390	- 1.3	- 3.8	329	4- 5 pm	WED	27	3,549	WED	27	2,390	2,490	.96
I 35	2 MILES W. OF K- 131 INTCHG. N. OF LEBO	COFFEY	12,711	14,072	12,580	- 1.0	- 10.6	1,344	5- 6 pm	FRI	8	16,019	FRI	8	12,580	12,504	1.01
US 59	4.3 MILES S. OF OTTAWA	FRANKLIN	5,839	5,959	5,876	0.6	- 1.4	672	4- 5 pm	FRI	8	7,205	WED	27	5,876	6,095	.96
I 35	2 MILES N.E. OF THE WELLSVILLE INTCHG.	FRANKLIN	20,593	20,585	20,318	- 1.3	- 1.3	2,714	4- 5 pm	WED	27	31,378	WED	27	20,318	21,006	.97
US 400	3 MILES E. OF PARSONS	LABETTE	3,587	3,584	3,665	2.2	2.3	463	2- 3 pm	WED	27	5,677	WED	27	3,665	3,807	.96
US 59	4 MILES S. OF ERIE	NEOSHO	2,891	2,909	2,936	1.6	0.9	344	3- 4 pm	FRI	15	3,729	WED	27	2,936	3,234	.91
US 169	1 MILE N. OF THAYER	NEOSHO	4,138	4,093	4,467	8.0	9.1	612	3- 4 pm	WED	27	6,555	WED	27	4,467	4,742	.94
US 75	1 MILE N. OF YATES CENTER	WOODSON	2,703	2,670	2,660	- 1.6	- 0.4	384	10-11 am	THU	28	3,950	WED	27	2,660	2,747	.97
K 105	2 MILES N. OF TORONTO	WOODSON	555	555	556	0.2	0.2	70	12- 1 pm	SUN	17	660	FRI	15	556	568	.98

Percent of Change for District 4 Stations

- .5 - 2.2

Rural State Highways for District 5

US 56	5.5 MILES E. OF GREAT BEND	BARTON	5,089	5,013	5,070	- 0.4	1.1	571	5- 6 pm	FRI	15	6,370	WED	27	5,070	5,450	.93
US 77	2 MILES N. OF EL DORADO	BUTLER	2,467	2,485	2,515	1.9	1.2	298	5- 6 pm	WED	27	3,378	WED	27	2,515	2,534	.99
US 400	1.5 MILES E. OF LEON	BUTLER	3,879	4,856	5,068	30.7	4.4	767	5- 6 pm	WED	27	8,648	WED	27	5,068	5,210	.97
US 77	3.7 MILES N. OF ARKANSAS CITY	COWLEY		10,326	10,443		1.1	1,143	3- 4 pm	FRI	15	12,914	FRI	1	10,443	11,246	.93
US 160	6.2 MILES E. OF ATTICA	HARPER	1,355	1,535	1,484	9.5	- 3.3	165	4- 5 pm	FRI	8	1,847	WED	27	1,484	1,594	.93
US 50	3 MILES N.E. OF NEWTON	HARVEY	6,391	6,204	6,199	- 3.0	- 0.1	676	5- 6 pm	FRI	15	7,397	FRI	8	6,199	6,252	.99
US 54	5.8 MILES W. OF KINGMAN	KINGMAN	5,161	5,036	4,771	- 7.6	- 5.3	596	4- 5 pm	WED	27	6,676	WED	27	4,771	4,915	.97
US 54	1.5 MILES W. OF HAVILAND	KIOWA	5,297	5,302	5,001	- 5.6	- 5.7	539	1- 2 pm	WED	27	6,796	WED	27	5,001	5,186	.96
US 183	7 MILES S. OF GREENSBURG	KIOWA	885	983	953	7.7	- 3.1	107	3- 4 pm	FRI	1	1,194	WED	27	953	1,056	.90
US 56	5 MILES S.W. OF LARNED	PAWNEE	2,183	2,186	2,102	- 3.7	- 3.8	263	3- 4 pm	WED	27	2,939	WED	27	2,102	2,197	.96
K 61	5 MILES S.W. OF ARLINGTON	RENO	2,031	2,037	2,012	- 0.9	- 1.2	221	5- 6 pm	FRI	15	2,354	FRI	15	2,012	2,081	.97
K 14	1 MILE N. OF LYONS	RICE	1,460	1,342	1,309	- 10.3	- 2.5	161	3- 4 pm	WED	27	1,685	WED	27	1,309	1,401	.93
K 42	3 MILES N.E. OF VIOLA	SEDGWICK	4,358	4,626	4,447	2.0	- 3.9	474	4- 5 pm	FRI	1	5,370	FRI	1	4,447	4,815	.92
US 281	0.5 MILES S. OF ST. JOHN	STAFFORD	2,459	2,377	2,405	- 2.2	1.2	259	4- 5 pm	FRI	8	3,159	WED	27	2,405	2,614	.92
US 81	4.1 MILES S. OF WELLINGTON	SUMNER	1,667	1,744	1,588	- 4.7	- 8.9	176	5- 6 pm	WED	6	1,874	FRI	8	1,588	1,677	.95

Percent of Change for District 5 Stations

.5 - 1.2

Rural State Highways for District 6

US 83	8.2 MILES S. OF GARDEN CITY	FINNEY	4,043	4,101	4,059	0.4	- 1.0	434	5- 6 pm	WED	20	4,930	WED	27	4,059	4,329	.94
US 50	4.5 MILES W. OF DODGE CITY	FORD	5,713	6,313	5,492	- 3.9	- 13.0	604	5- 6 pm	FRI	1	6,941	WED	27	5,492	5,827	.94
US 400	4.5 MILES W. OF DODGE CITY	FORD	995	1,146	1,091	9.6	- 4.8	114	7- 8 am	TUE	5	1,355	TUE	26	1,091	1,192	.92
K 25	2.5 MILES N. OF ULYSSES	GRANT	1,490	1,542	1,591	6.8	3.2	170	5- 6 pm	TUE	12	2,063	TUE	26	1,591	1,761	.90
K 27	15 MILES N OF TRIBUNE	GREELEY	798	654	680	- 14.8	4.0	88	3- 4 pm	THU	7	926	THU	7	680	765	.89
US 50	0.8 MILES E. OF KAN-COLO ST. LINE	HAMILTON	1,483	1,426	1,328	- 10.5	- 6.9	155	3- 4 pm	WED	27	1,956	WED	27	1,328	1,370	.97
US 283	8.3 MILES N. OF JETMORE	HODGEMAN	877	964	880	0.3	- 8.7	110	5- 6 pm	FRI	15	1,145	THU	7	880	977	.90
US 54	3.7 MILES W. OF MEADE	MEADE		3,782	3,632		- 4.0	344	4- 5 pm	TUE	26	4,543	WED	27	3,632	3,725	.98
K 96	12 MILES W. OF SCOTT CITY	WICHITA	1,203	1,218	1,200	- 0.2	- 1.5	134	5- 6 pm	TUE	19	1,586	WED	27	1,200	1,332	.90

Percent of Change for District 6 Stations

- 1.7 - 5.6

Month of November, 2013

Sparse Matrix Model

Date: 18-DEC-2013

---- Average Daily Traffic ----  
for the Month  
2011 2012 2013

Percent Change  
Month  
2011 2012

---- Maximum Hour ----  
Volume Hour DOW Day

--- Maximum Day ---  
Volume DOW Day

7 Day Avg  
5 Day Avg  
7 Day / 5 Day Avg

Route Description Location Description County

Rural Secondary Stations

RS 61	6.5 MILES S.W. OF HIAWATHA	BROWN	209	216	247	18.2	14.4	37	5- 6 pm	MON	25	311	THU	14	247	266	.93
RS 463	0.7 MILES S.W. OF BELOIT	MITCHELL	235	251	247	5.1	- 1.6	39	3- 4 pm	SAT	9	338	SAT	9	247	266	.93
RS 272	2 MILES S. OF QUINTER	GOVE	398	362	309	-22.4	-14.6	71	4- 5 pm	FRI	8	513	FRI	8	309	319	.97
RS 13	0.5 MILES N. OF BUSH CITY	ANDERSON	330	308	446	35.2	44.8	59	4- 5 pm	FRI	15	561	FRI	1	446	470	.95
RS 2316	3 MILES E. OF PARSONS	LABETTE	1,780	1,778	1,726	- 3.0	- 2.9	207	5- 6 pm	WED	6	2,153	WED	6	1,726	1,872	.92
RS 303	0.8 MI. S. OF US-54 & K17 JCT. (MIDWAY)	KINGMAN	284	313	303	6.7	- 3.2	80	3- 4 pm	FRI	29	386	SAT	9	303	314	.96
RS 251	6 MILES W. OF FORD	FORD	437	471	445	1.8	- 5.5	68	3- 4 pm	WED	27	644	WED	27	445	462	.96

Percent of Change for Rural Secondary Stations

1.4 .6

Reservoir Stations

K 237	1.5 MILES N. OF JCT. US 24	JEFFERSON	969	984	966	- 0.3	- 1.8	122	5- 6 pm	TUE	12	1,153	SAT	9	966	989	.98
LOCAL ROAD	KANOPOLIS RESERVOIR N. OF DAM	ELLSWORTH	109	118	78	-28.4	-33.9					147	SAT	30	78	69	1.13
LOCAL ROAD	KANOPOLIS RESERVOIR S. OF DAM	ELLSWORTH	129	120	56	-56.6	-53.3					148	SAT	2	56	48	1.17
LOCAL ROAD	CEDAR BLUFF RESERVOIR N. OF DAM	TREGO	59	43	60	1.7	39.5					177	SUN	24	60	55	1.09

Percent of Change for Reservoir Stations

- 8.4 - 8.3

Kansas City Stations

US-69	0.4 MILES S. OF 135TH ST.	JOHNSON		49,222	50,763		3.1	*	5,695	5- 6 pm	FRI	8	60,834	FRI	15	50,763	54,422	.93
135TH	135TH E. OF MUR-LEN	JOHNSON	33,804	33,793	35,443	4.8	4.9	3,551	4- 5 pm	TUE	26	41,891	FRI	15	35,443	37,137	.95	
BLACKBOB	BLACKBOB RD. S. OF 139TH	JOHNSON	21,446	20,828	20,161	- 6.0	- 3.2	2,182	5- 6 pm	MON	25	22,725	FRI	1	20,161	20,394	.99	
I 435	0.8 MILES S. OF I - 70	WYANDOTTE	58,317	59,003	62,723	7.6	6.3	7,720	5- 6 pm	FRI	8	76,268	FRI	8	62,723	66,936	.94	

Percent of Change for Kansas City Stations

4.2 4.1

Salina Stations

OHIO ST.	OHIO ST. N. OF WESTCHESTER DR.	SALINE		16,603	16,471		- 0.8		1,805	4- 5 pm	WED	20	21,038	FRI	1	16,471	18,079	.91
----------	--------------------------------	--------	--	--------	--------	--	-------	--	-------	---------	-----	----	--------	-----	---	--------	--------	-----

Percent of Change for Salina Stations

- .8

Topeka Stations

45TH ST.	45TH ST. E. OF INDIANA	SHAWNEE	6,577	7,389	3,062	-53.4	-58.6	496	4- 5 pm	TUE	26	5,104	TUE	26	3,062	3,235	.95
N. TOPEKA	TOPEKA BLVD. NORTH OF PARAMORE ST.	SHAWNEE	17,808	15,542	16,078	- 9.7	3.4	1,750	12- 1 pm	FRI	1	20,531	FRI	1	16,078	17,551	.92
I 70	I 70 E. OF MACVICAR ST.	SHAWNEE	42,617	43,541	44,654	4.8	2.6	5,117	4- 5 pm	FRI	8	55,996	FRI	8	44,654	47,684	.94
I 470	I 470 N.W. OF HUNTOON	SHAWNEE	30,934	31,635	32,751	5.9	3.5	3,697	4- 5 pm	FRI	15	40,454	FRI	1	32,751	34,924	.94
US 40	US 40 E. OF TECUMSEH RD.	SHAWNEE	4,541	4,556	4,396	- 3.2	- 3.5	623	7- 8 am	TUE	19	5,420	THU	14	4,396	4,813	.91
US 75	US 75 N. OF S.W. 57TH	SHAWNEE	13,647	15,395	13,951	2.2	- 9.4	1,679	4- 5 pm	TUE	26	17,122	FRI	15	13,951	15,242	.92
K 4	1MI. S. OF JCT. US-24	SHAWNEE	8,131	8,323	8,202	0.9	- 1.5	1,103	7- 8 am	THU	7	9,867	FRI	15	8,202	8,936	.92

Percent of Change for Topeka Stations

- .9 - 2.6

Month of November, 2013

Sparse Matrix Model

Date: 18-DEC-2013

---- Average Daily Traffic ----			Percent Change		---- Maximum Hour ----				--- Maximum Day ---			7 Day	5 Day	7 Day /	
for the Month			Month		Volume	Hour	DOW	Day	Volume	DOW	Day	Avg	Avg	5 Day	Avg
2011	2012	2013	2011	2012											

Route Description	Location Description	County
-------------------	----------------------	--------

Wichita Stations

K 96	K-96 E. OF GREENWICH RD.	SEDGWICK		22,667	22,958		1.3	2,901	7- 8 am	THU	21	27,092	FRI	8	22,958	24,922	.92
US 54	KELLOGG E. OF WEST ST.	SEDGWICK	83,364	88,834	88,922	6.7	0.1	9,126	4- 5 pm	THU	14	107,780	FRI	8	88,922	96,935	.92
13TH ST.	13TH ST W. OF PINECREST	SEDGWICK	14,046	12,573	12,005	- 14.5	- 4.5	1,345	5- 6 pm	WED	20	14,681	FRI	1	12,005	12,903	.93
ROCK RD.	ROCK RD. S. OF CENTRAL AVE	SEDGWICK	31,044	32,279	32,401	4.4	0.4	3,306	12- 1 pm	FRI	29	43,427	FRI	29	32,401	33,489	.97
21ST ST.	21ST ST E. OF WASHINGTON	SEDGWICK	11,979	12,742	10,981	- 8.3	- 13.8	1,264	4- 5 pm	FRI	1	15,031	FRI	1	10,981	11,529	.95
HILLSIDE ST.	HILLSIDE S. OF 15TH ST	SEDGWICK		10,844	9,990		- 7.9	1,169	5- 6 pm	THU	14	13,202	THU	14	9,990	11,033	.91
I 235	I 235 S. OF MAPLE ST	SEDGWICK	44,473	46,367	44,738	0.6	- 3.5	4,840	4- 5 pm	FRI	15	53,619	FRI	15	44,738	48,490	.92
I 135	I-135 N. OF 21ST ST.	SEDGWICK	65,883	67,058	64,932	- 1.4	- 3.2	7,691	7- 8 am	THU	14	81,309	FRI	8	64,932	73,146	.89

Percent of Change for Wichita Stations

1.3 - 2.2

NOTE: \* Excluded from Percent Change Totals