

**KANSAS DEPARTMENT OF TRANSPORTATION
BUREAU OF TRANSPORTATION PLANNING**

DECEMBER 2013

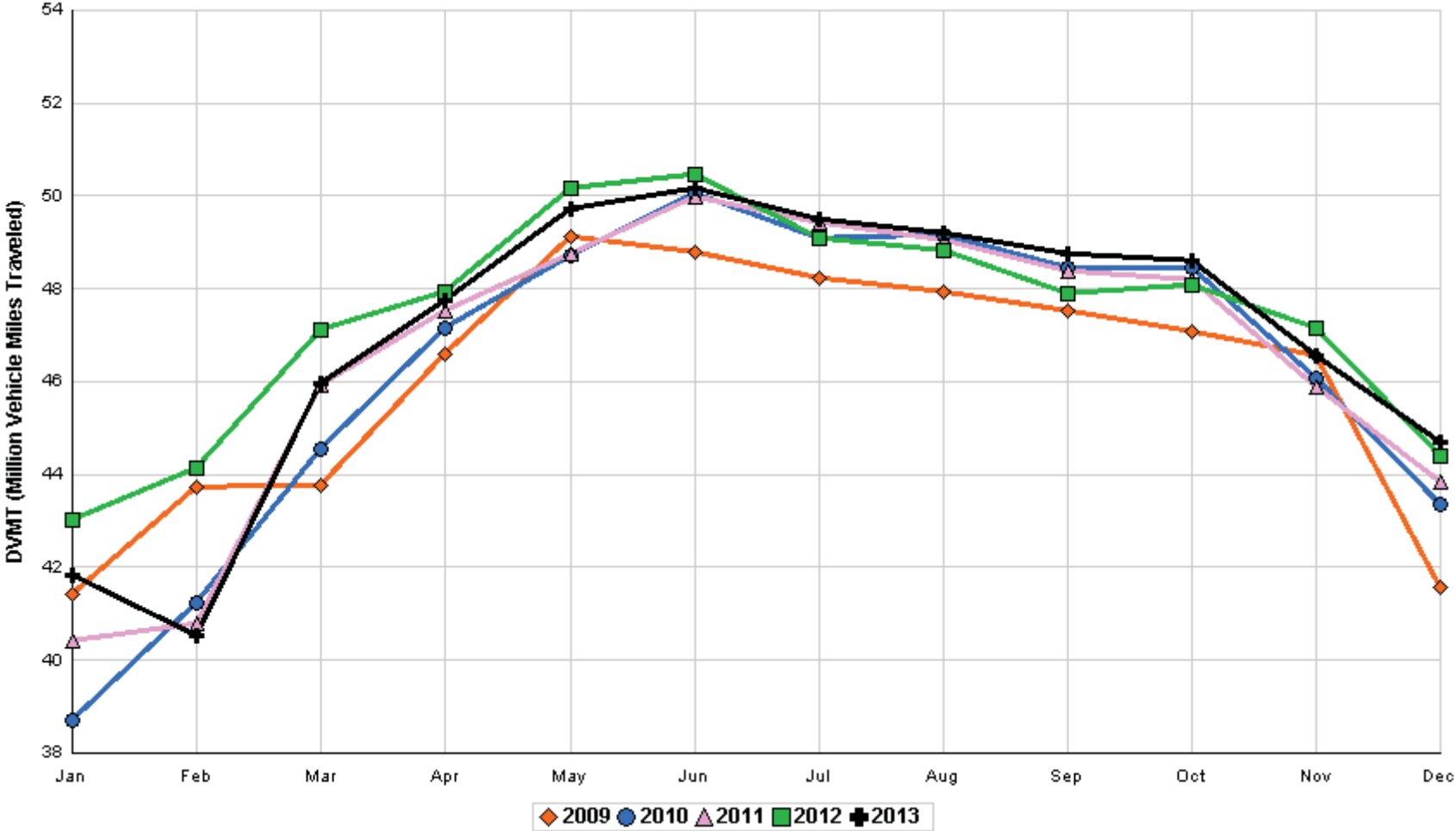
SIGNIFICANT FACTS AND TRENDS



| Travel on the Kansas State Highway System | | | | |
|-------------------------------------------|---------------------|--------|--------------|-------|
| | Daily Vehicle Miles | | % Change | |
| | (In Millions) | | 2012 to 2013 | |
| Month | 2012 | 2013 | Month | Year |
| Jan | 43.023 | 41.827 | - 2.8 | - 2.8 |
| Feb | 44.153 | 40.524 | - 8.2 | - 5.5 |
| Mar | 47.116 | 45.976 | - 2.4 | - 4.4 |
| Apr | 47.916 | 47.741 | - 0.4 | - 3.4 |
| May | 50.155 | 49.709 | - 0.9 | - 2.8 |
| Jun | 50.464 | 50.184 | - 0.6 | - 2.4 |
| Jul | 49.090 | 49.502 | 0.8 | - 1.9 |
| Aug | 48.829 | 49.198 | 0.8 | - 1.6 |
| Sep | 47.889 | 48.754 | 1.8 | - 1.2 |
| Oct | 48.089 | 48.604 | 1.1 | - 1.0 |
| Nov | 47.139 | 46.555 | - 1.2 | - 1.0 |
| Dec | 44.405 | 44.694 | 0.7 | - 0.9 |
| Average | 47.356 | 46.939 | | |

**Contact the Traffic and Field Operations Unit with questions or requests at:
(785)-296-3841 or E-mail: TrafficCounts@ksdot.org
The Monthly Average Daily Traffic (MADT) is Calculated Utilizing the
Day-Of-Week (DOW) Method. Missing Traffic Count Data will Not be Estimated
Therefore Station Summary Data will be Blank where Data is Not Available.**

Total Travel on Kansas State Highway System 2009 - 2013



Month of December, 2013

Sparse Matrix Model

Date: 14-JAN-2014

---- Average Daily Traffic ----
for the Month

Percent Change
Month

---- Maximum Hour ----
Volume Hour DOW Day

--- Maximum Day ---
Volume DOW Day

7 Day Avg
5 Day Avg
7 Day / 5 Day Avg

| Route Description | Location Description | County | 2011 | 2012 | 2013 | 2011 | 2012 | Volume | Hour | DOW | Day | Volume | DOW | Day | 7 Day Avg | 5 Day Avg | 7 Day / 5 Day Avg |
|--------------------------------------------|-------------------------------------------|-----------|--------|--------|--------|--------|-------|--------|----------|-----|-----|--------|-----|-----|-----------|-----------|-------------------|
| Rural State Highways for District 1 | | | | | | | | | | | | | | | | | |
| US-75 | 1.2 MILES N. OF US-36 I.C. | BROWN | 3,516 | 3,555 | 3,833 | 9.0 | 7.8 | 427 | 2- 3 pm | SUN | 1 | 4,829 | SUN | 1 | 3,833 | 3,966 | .97 |
| US 24 | 1.5 MILES N.E. OF LAWRENCE | DOUGLAS | 6,100 | 5,651 | 5,547 | - 9.1 | - 1.8 | 670 | 4- 5 pm | FRI | 20 | 7,031 | WED | 18 | 5,547 | 6,014 | .92 |
| US 56 | 4 MILES E. OF OVERBROOK | DOUGLAS | 1,772 | 1,716 | 1,745 | - 1.5 | 1.7 | 220 | 4- 5 pm | THU | 19 | 2,065 | THU | 19 | 1,745 | 1,847 | .94 |
| US 75 | 5.8 MILES N. OF HOLTON | JACKSON | 5,626 | 5,428 | 5,685 | 1.0 | 4.7 | 585 | 2- 3 pm | SUN | 1 | 6,918 | FRI | 27 | 5,685 | 5,882 | .97 |
| K 10 | 0.2 MILES E. OF RS. 346 INTCHG. | JOHNSON | 29,430 | 28,356 | 28,461 | - 3.3 | 0.4 | 3,816 | 5- 6 pm | MON | 30 | 35,320 | FRI | 20 | 28,461 | 30,849 | .92 |
| K 99 | 2.9 MILES S. OF EMPORIA | LYON | 3,625 | 3,440 | 3,407 | - 6.0 | - 1.0 | 424 | 7- 8 am | MON | 16 | 4,208 | WED | 18 | 3,407 | 3,755 | .91 |
| US 36 | 13 MILES E. OF MARYSVILLE | MARSHALL | 2,240 | 2,194 | 2,162 | - 3.5 | - 1.5 | 273 | 4- 5 pm | FRI | 20 | 2,742 | FRI | 27 | 2,162 | 2,317 | .93 |
| K 68 | 0.15 MILES E. OF JCT K 268 | OSAGE | 2,385 | 2,282 | 2,084 | - 12.6 | - 8.7 | 285 | 12- 1 pm | SAT | 21 | 2,447 | THU | 19 | 2,084 | 2,189 | .95 |
| K 268 | 0.1 MILES E. OF US 75 | OSAGE | 2,606 | 2,513 | | | | | | | | | | | | | |
| K 18 | 0.7 MILES N.E. OF OGDEN | RILEY | | | | | | | | | | | | | | | |
| US 24 | 4 MILES N. OF MANHATTAN | RILEY | 6,246 | 6,169 | 5,946 | - 4.8 | - 3.6 | 684 | 5- 6 pm | WED | 18 | 7,155 | THU | 19 | 5,946 | 6,223 | .96 |
| US 24 | 1 MILE N.W. OF ROSSVILLE | SHAWNEE | 3,997 | 3,767 | 3,739 | - 6.5 | - 0.7 | 485 | 5- 6 pm | THU | 12 | 4,855 | WED | 18 | 3,739 | 4,128 | .91 |
| I 70 | 4.7 MILES E. OF K 30 INTCHG. (MAPLE HILL) | WABAUNSEE | 19,026 | 19,154 | 19,131 | 0.6 | - 0.1 | 2,815 | 2- 3 pm | SUN | 1 | 32,911 | SUN | 1 | 19,131 | 18,866 | 1.01 |

Percent of Change for District 1 Stations

- 2.6 .0

Rural State Highways for District 2

| | | | | | | | | | | | | | | | | | |
|-------|-------------------------------------------|-----------|--------|--------|--------|--------|-------|-------|----------|-----|----|--------|-----|----|--------|--------|------|
| K 9 | 5.8 MILES E. OF CLIFTON | CLAY | 310 | 301 | 318 | 2.6 | 5.6 | 48 | 5- 6 pm | TUE | 17 | 431 | TUE | 17 | 318 | 361 | .88 |
| K 15 | 3.3 MILES N. OF CLAY CENTER | CLAY | 1,736 | 1,697 | 1,723 | - 0.7 | 1.5 | 320 | 5- 6 pm | WED | 18 | 2,335 | WED | 18 | 1,723 | 1,890 | .91 |
| I 70 | W. OF K-232 INTCHG. (WILSON) | ELLSWORTH | 11,809 | 9,765 | 10,309 | - 12.7 | 5.6 | 2,078 | 3- 4 pm | SUN | 1 | 20,934 | SUN | 1 | 10,309 | 9,750 | 1.06 |
| K 141 | 2.8 MILES S. OF KANOPOLIS DAM | ELLSWORTH | 309 | 300 | 329 | 6.5 | 9.7 | 68 | 7- 8 am | FRI | 6 | 511 | TUE | 3 | 329 | 355 | .93 |
| K 18 | 1.8 MILES W. OF JUNCTION CITY | GEARY | 1,178 | 1,128 | 1,136 | - 3.6 | 0.7 | 202 | 3- 4 pm | FRI | 6 | 1,575 | TUE | 3 | 1,136 | 1,270 | .89 |
| I 70 | 4.5 MILES S.W. OF JUNCTION CITY | GEARY | 15,655 | 14,980 | 15,139 | - 3.3 | 1.1 | 2,149 | 4- 5 pm | SUN | 1 | 24,616 | SUN | 1 | 15,139 | 15,110 | 1.00 |
| US 77 | 4 MILES S. OF JUNCTION CITY | GEARY | 3,546 | 3,489 | 3,425 | - 3.4 | - 1.8 | 480 | 4- 5 pm | SUN | 1 | 4,809 | FRI | 20 | 3,425 | 3,590 | .95 |
| US 36 | 1 MILE E. OF MANKATO | JEWELL | 1,682 | 1,698 | 1,632 | - 3.0 | - 3.9 | 187 | 5- 6 pm | FRI | 20 | 2,137 | FRI | 13 | 1,632 | 1,764 | .93 |
| K 18 | 0.5 MILES W. OF LINCOLN | LINCOLN | 951 | 835 | 901 | - 5.3 | 7.9 | 117 | 12- 1 pm | FRI | 20 | 1,201 | THU | 19 | 901 | 983 | .92 |
| I 135 | 0.5 MILES N. OF US 56 INTCHG. (MCPHERSON) | MCPHERSON | 11,425 | 11,839 | 12,475 | 9.2 | 5.4 | 1,908 | 3- 4 pm | SUN | 1 | 20,389 | SUN | 1 | 12,475 | 12,361 | 1.01 |
| K 14 | 3 MILES S. OF BELOIT | MITCHELL | 768 | 735 | 791 | 3.0 | 7.6 | 103 | 4- 5 pm | FRI | 20 | 1,025 | FRI | 20 | 791 | 876 | .90 |
| US 81 | 2.5 MILES S. OF BELLEVILLE | REPUBLIC | 4,942 | 4,691 | 4,833 | - 2.2 | 3.0 | 730 | 2- 3 pm | SUN | 1 | 7,613 | SUN | 1 | 4,833 | 4,862 | .99 |

Percent of Change for District 2 Stations

- 2.4 3.0

Rural State Highways for District 3

| | | | | | | | | | | | | | | | | | |
|--------|-----------------------------------|----------|-------|-------|-------|--------|--------|-------|----------|-----|----|--------|-----|----|-------|-------|------|
| US 83 | 6.2 MILES S. OF OAKLEY | LOGAN | 1,874 | 1,627 | 1,807 | - 3.6 | 11.1 | 192 | 11-12 pm | WED | 18 | 2,434 | FRI | 20 | 1,807 | 1,919 | .94 |
| US 36 | 9.5 MILES W. OF NORTON | NORTON | 838 | 812 | 872 | 4.1 | 7.4 | 102 | 5- 6 pm | FRI | 6 | 1,110 | FRI | 20 | 872 | 938 | .93 |
| US 183 | 1.2 MILES S. OF PHILLIPSBURG | PHILLIPS | 2,222 | 2,061 | 2,073 | - 6.7 | 0.6 | 234 | 5- 6 pm | TUE | 17 | 2,544 | FRI | 20 | 2,073 | 2,202 | .94 |
| K 23 | 14.5 MILES S. OF HOXIE | SHERIDAN | 765 | 780 | 797 | 4.2 | 2.2 | 99 | 10-11 am | WED | 18 | 1,033 | FRI | 20 | 797 | 871 | .92 |
| I 70 | 2.2 MI. E OF KANORADO EXIT | SHERMAN | 7,286 | 7,480 | 8,066 | 10.7 | 7.8 | 1,770 | 1- 2 pm | SUN | 1 | 17,209 | SUN | 1 | 8,066 | 7,503 | 1.08 |
| US 24 | 7.3 MILES E. OF COLBY | THOMAS | 1,583 | 1,603 | 1,764 | 11.4 | 10.0 | 202 | 2- 3 pm | THU | 26 | 2,275 | FRI | 20 | 1,764 | 1,885 | .94 |
| K 25 | 1.8 MILES S. OF COLBY | THOMAS | 725 | 718 | 589 | - 18.8 | - 18.0 | 86 | 10-11 am | THU | 19 | 824 | TUE | 17 | 589 | 659 | .89 |
| I 70 | 1 MILE W. OF WAKEENEY | TREGO | 8,220 | 8,599 | 9,102 | 10.7 | 5.8 | 2,005 | 2- 3 pm | SUN | 1 | 18,195 | SUN | 1 | 9,102 | 8,693 | 1.05 |
| US 40 | 1.4 MILES E. OF KAN-COLO ST. LINE | WALLACE | 457 | 405 | 425 | - 7.0 | 4.9 | 59 | 4- 5 pm | MON | 2 | 580 | MON | 2 | 425 | 451 | .94 |

Percent of Change for District 3 Stations

6.4 5.9

Month of December, 2013

Sparse Matrix Model

Date: 14-JAN-2014

| Route Description | Location Description | County | Average Daily Traffic for the Month | | | Percent Change Month | | Maximum Hour | | | | Maximum Day | | | 7 Day Avg | 5 Day Avg | 7 Day / 5 Day Avg |
|--------------------------------------------|-----------------------------------------|------------|-------------------------------------|--------|--------|----------------------|-------|--------------|----------|-----|-----|-------------|-----|-----|-----------|-----------|-------------------|
| | | | 2011 | 2012 | 2013 | 2011 | 2012 | Volume | Hour | DOW | Day | Volume | DOW | Day | | | |
| Rural State Highways for District 4 | | | | | | | | | | | | | | | | | |
| US 54 | 3 MILES W. OF IOLA | ALLEN | 2,607 | 2,527 | 2,470 | - 5.3 | - 2.3 | 282 | 3- 4 pm | FRI | 20 | 3,191 | FRI | 20 | 2,470 | 2,670 | .93 |
| US 169 | 1 MILE N. OF GREELEY | ANDERSON | 3,257 | 2,998 | 2,937 | - 9.8 | - 2.0 | 345 | 2- 3 pm | SUN | 1 | 3,787 | FRI | 20 | 2,937 | 3,127 | .94 |
| US 69 | 2 MILES N. OF FT SCOTT | BOURBON | | | 5,620 | | | 726 | 2- 3 pm | SUN | 1 | 7,712 | SUN | 1 | 5,620 | 5,899 | .95 |
| US 166 | 0.5 MILES W. OF NIOTAZE | CHAUTAUQUA | 2,330 | 2,323 | 2,165 | - 7.1 | - 6.8 | 259 | 4- 5 pm | FRI | 20 | 2,852 | FRI | 20 | 2,165 | 2,324 | .93 |
| I 35 | 2 MILES W. OF K- 131 INTCHG. N. OF LEBO | COFFEY | | 12,886 | 12,798 | | - 0.7 | 1,551 | 11-12 pm | SAT | 28 | 18,381 | FRI | 20 | 12,798 | 13,021 | .98 |
| US 59 | 4.3 MILES S. OF OTTAWA | FRANKLIN | 5,770 | 5,548 | 5,611 | - 2.8 | 1.1 | 614 | 4- 5 pm | TUE | 3 | 6,795 | FRI | 20 | 5,611 | 6,007 | .93 |
| I 35 | 2 MILES N.E. OF THE WELLSVILLE INTCHG. | FRANKLIN | 19,848 | 19,550 | 19,870 | 0.1 | 1.6 | 2,255 | 2- 3 pm | SUN | 1 | 27,920 | SUN | 1 | 19,870 | 20,502 | .97 |
| US 400 | 3 MILES E. OF PARSONS | LABETTE | 3,430 | 3,379 | 3,386 | - 1.3 | 0.2 | 496 | 2- 3 pm | SUN | 1 | 4,759 | FRI | 20 | 3,386 | 3,567 | .95 |
| US 59 | 4 MILES S. OF ERIE | NEOSHO | 2,867 | 2,836 | 2,730 | - 4.8 | - 3.7 | 348 | 3- 4 pm | FRI | 20 | 3,681 | FRI | 20 | 2,730 | 3,074 | .89 |
| US 169 | 1 MILE N. OF THAYER | NEOSHO | 3,897 | 3,714 | 4,087 | 4.9 | 10.0 | 486 | 3- 4 pm | SUN | 1 | 5,168 | SUN | 1 | 4,087 | 4,299 | .95 |
| US 75 | 1 MILE N. OF YATES CENTER | WOODSON | 2,554 | 2,492 | 2,478 | - 3.0 | - 0.6 | 345 | 2- 3 pm | SUN | 1 | 3,426 | SUN | 1 | 2,478 | 2,629 | .94 |
| K 105 | 2 MILES N. OF TORONTO | WOODSON | 539 | 514 | 503 | - 6.7 | - 2.1 | 69 | 1- 2 pm | TUE | 3 | 683 | WED | 4 | 503 | 531 | .95 |

Percent of Change for District 4 Stations

- 1.8 .5

Rural State Highways for District 5

| | | | | | | | | | | | | | | | | | |
|--------|-------------------------------|----------|-------|--------|-------|-------|-------|-------|----------|-----|----|--------|-----|----|-------|--------|-----|
| US 56 | 5.5 MILES E. OF GREAT BEND | BARTON | 4,853 | 4,684 | 4,934 | 1.7 | 5.3 | 573 | 5- 6 pm | FRI | 13 | 6,441 | FRI | 20 | 4,934 | 5,390 | .92 |
| US 77 | 2 MILES N. OF EL DORADO | BUTLER | 2,346 | 2,322 | 2,326 | - 0.9 | 0.2 | 272 | 4- 5 pm | FRI | 20 | 2,910 | FRI | 20 | 2,326 | 2,436 | .95 |
| US 400 | 1.5 MILES E. OF LEON | BUTLER | 4,310 | 3,728 | 5,280 | 22.5 | 41.6 | 685 | 4- 5 pm | SUN | 29 | 8,669 | FRI | 20 | 5,280 | 5,447 | .97 |
| US 77 | 3.7 MILES N. OF ARKANSAS CITY | COWLEY | | 10,089 | 9,937 | | - 1.5 | 1,156 | 3- 4 pm | FRI | 13 | 12,820 | FRI | 13 | 9,937 | 10,972 | .91 |
| US 160 | 6.2 MILES E. OF ATTICA | HARPER | 1,367 | 1,473 | 1,443 | 5.6 | - 2.0 | 173 | 2- 3 pm | TUE | 3 | 1,884 | FRI | 20 | 1,443 | 1,583 | .91 |
| US 50 | 3 MILES N.E. OF NEWTON | HARVEY | 6,028 | 5,792 | 5,667 | - 6.0 | - 2.2 | 619 | 3- 4 pm | FRI | 20 | 7,076 | FRI | 20 | 5,667 | 5,979 | .95 |
| US 54 | 5.8 MILES W. OF KINGMAN | KINGMAN | 4,870 | | 4,837 | - 0.7 | | 598 | 4- 5 pm | SUN | 1 | 6,816 | FRI | 20 | 4,837 | 4,925 | .98 |
| US 54 | 1.5 MILES W. OF HAVILAND | KIOWA | 4,897 | 5,027 | 5,107 | 4.3 | 1.6 | 587 | 2- 3 pm | SUN | 1 | 7,017 | FRI | 20 | 5,107 | 5,221 | .98 |
| US 183 | 7 MILES S. OF GREENSBURG | KIOWA | 831 | 937 | 905 | 8.9 | - 3.4 | 124 | 11-12 pm | FRI | 20 | 1,267 | THU | 19 | 905 | 1,017 | .89 |
| US 56 | 5 MILES S.W. OF LARNED | PAWNEE | 2,013 | 2,047 | 2,105 | 4.6 | 2.8 | 251 | 3- 4 pm | SUN | 1 | 2,926 | FRI | 20 | 2,105 | 2,200 | .96 |
| K 61 | 5 MILES S.W. OF ARLINGTON | RENO | 1,783 | 2,000 | 1,943 | 9.0 | - 2.9 | 188 | 5- 6 pm | FRI | 20 | 2,473 | TUE | 3 | 1,943 | 2,045 | .95 |
| K 14 | 1 MILE N. OF LYONS | RICE | 1,386 | 1,297 | 1,285 | - 7.3 | - 0.9 | 155 | 2- 3 pm | FRI | 13 | 1,639 | FRI | 13 | 1,285 | 1,419 | .91 |
| K 42 | 3 MILES N.E. OF VIOLA | SEDGWICK | 4,339 | 4,506 | 4,332 | - 0.2 | - 3.9 | 516 | 4- 5 pm | TUE | 3 | 5,774 | FRI | 20 | 4,332 | 4,774 | .91 |
| US 281 | 0.5 MILES S. OF ST. JOHN | STAFFORD | 2,318 | 2,253 | 2,362 | 1.9 | 4.8 | 279 | 3- 4 pm | FRI | 20 | 3,156 | FRI | 20 | 2,362 | 2,606 | .91 |
| US 81 | 4.1 MILES S. OF WELLINGTON | SUMNER | 1,572 | 1,578 | 1,508 | - 4.1 | - 4.4 | 191 | 4- 5 pm | THU | 19 | 2,046 | TUE | 3 | 1,508 | 1,647 | .92 |

Percent of Change for District 5 Stations

2.6 2.9

Rural State Highways for District 6

| | | | | | | | | | | | | | | | | | |
|--------|-----------------------------------|----------|-------|-------|-------|-------|--------|-----|----------|-----|----|-------|-----|----|-------|-------|-----|
| US 83 | 8.2 MILES S. OF GARDEN CITY | FINNEY | 3,914 | 3,930 | 4,224 | 7.9 | 7.5 | 470 | 5- 6 pm | TUE | 3 | 5,577 | FRI | 20 | 4,224 | 4,489 | .94 |
| US 50 | 4.5 MILES W. OF DODGE CITY | FORD | 5,397 | 6,135 | 5,451 | 1.0 | - 11.1 | 612 | 5- 6 pm | THU | 19 | 6,990 | FRI | 20 | 5,451 | 5,805 | .94 |
| US 400 | 4.5 MILES W. OF DODGE CITY | FORD | 964 | 1,095 | 1,059 | 9.9 | - 3.3 | 133 | 5- 6 pm | THU | 19 | 1,469 | THU | 19 | 1,059 | 1,170 | .91 |
| K 25 | 2.5 MILES N. OF ULYSSES | GRANT | 1,401 | 1,452 | 1,543 | 10.1 | 6.3 | 191 | 4- 5 pm | FRI | 20 | 2,077 | FRI | 20 | 1,543 | 1,703 | .91 |
| K 27 | 15 MILES N OF TRIBUNE | GREELEY | 700 | 655 | 635 | - 9.3 | - 3.1 | 84 | 10-11 am | MON | 16 | 921 | THU | 19 | 635 | 707 | .90 |
| US 50 | 0.8 MILES E. OF KAN-COLO ST. LINE | HAMILTON | 1,310 | 1,275 | 1,303 | - 0.5 | 2.2 | 176 | 3- 4 pm | SUN | 1 | 1,812 | SUN | 1 | 1,303 | 1,329 | .98 |
| US 283 | 8.3 MILES N. OF JETMORE | HODGEMAN | 786 | 825 | 848 | 7.9 | 2.8 | 109 | 4- 5 pm | THU | 19 | 1,157 | THU | 19 | 848 | 924 | .92 |
| US 54 | 3.7 MILES W. OF MEADE | MEADE | | 3,617 | 3,814 | | 5.4 | 382 | 1- 2 pm | SUN | 1 | 5,261 | FRI | 20 | 3,814 | 3,883 | .98 |
| K 96 | 12 MILES W. OF SCOTT CITY | WICHITA | 1,129 | 1,138 | 1,206 | 6.8 | 6.0 | 147 | 5- 6 pm | WED | 18 | 1,511 | FRI | 20 | 1,206 | 1,337 | .90 |

Percent of Change for District 6 Stations

4.3 - .2

Date: 14-JAN-2014

Month of December, 2013

Sparse Matrix Model

| Route Description | Location Description | County | Average Daily Traffic for the Month | | | Percent Change Month | | Maximum Hour | | | | Maximum Day | | | 7 Day Avg | 5 Day Avg | 7 Day / 5 Day Avg |
|-------------------|----------------------|--------|-------------------------------------|------|------|----------------------|------|--------------|------|-----|-----|-------------|-----|-----|-----------|-----------|-------------------|
| | | | 2011 | 2012 | 2013 | 2011 | 2012 | Volume | Hour | DOW | Day | Volume | DOW | Day | | | |

Rural Secondary Stations

| | | | | | | | | | | | | | | | | | |
|---------|-----------------------------------------|----------|-------|-------|-------|--------|--------|-----|---------|-----|----|-------|-----|----|-------|-------|-----|
| RS 61 | 6.5 MILES S.W. OF HIAWATHA | BROWN | 197 | 217 | 214 | 8.6 | - 1.4 | 33 | 3- 4 pm | MON | 30 | 291 | MON | 2 | 214 | 234 | .91 |
| RS 463 | 0.7 MILES S.W. OF BELOIT | MITCHELL | 229 | 262 | 224 | - 2.2 | - 14.5 | 48 | 4- 5 pm | FRI | 20 | 304 | THU | 12 | 224 | 251 | .89 |
| RS 272 | 2 MILES S. OF QUINTER | GOVE | 344 | 309 | 289 | - 16.0 | - 6.5 | 46 | 5- 6 pm | WED | 18 | 370 | TUE | 3 | 289 | 303 | .95 |
| RS 13 | 0.5 MILES N. OF BUSH CITY | ANDERSON | 308 | 384 | 413 | 34.1 | 7.6 | 61 | 5- 6 pm | WED | 18 | 547 | FRI | 27 | 413 | 461 | .90 |
| RS 2316 | 3 MILES E. OF PARSONS | LABETTE | 1,768 | 1,717 | 1,583 | - 10.5 | - 7.8 | 229 | 5- 6 pm | TUE | 17 | 2,129 | TUE | 3 | 1,583 | 1,748 | .91 |
| RS 303 | 0.8 MI. S. OF US-54 & K17 JCT. (MIDWAY) | KINGMAN | 275 | 263 | 268 | - 2.5 | 1.9 | 41 | 5- 6 pm | THU | 12 | 342 | TUE | 3 | 268 | 286 | .94 |
| RS 251 | 6 MILES W. OF FORD | FORD | 353 | 429 | 414 | 17.3 | - 3.5 | 62 | 3- 4 pm | TUE | 24 | 548 | FRI | 20 | 414 | 432 | .96 |

Percent of Change for Rural Secondary Stations

- 2.0 - 4.9

Reservoir Stations

| | | | | | | | | | | | | | | | | | |
|------------|---------------------------------|-----------|-----|-----|-----|--------|--------|-----|---------|-----|---|-------|-----|---|-----|-----|------|
| K 237 | 1.5 MILES N. OF JCT. US 24 | JEFFERSON | 931 | 918 | 856 | - 8.1 | - 6.8 | 127 | 5- 6 pm | TUE | 3 | 1,114 | TUE | 3 | 856 | 923 | .93 |
| LOCAL ROAD | KANOPOLIS RESERVOIR N. OF DAM | ELLSWORTH | 70 | 57 | 24 | - 65.7 | - 57.9 | | | | | 109 | SUN | 1 | 24 | 22 | 1.09 |
| LOCAL ROAD | KANOPOLIS RESERVOIR S. OF DAM | ELLSWORTH | 68 | 54 | 22 | - 67.6 | - 59.3 | | | | | 63 | FRI | 6 | 22 | 20 | 1.10 |
| LOCAL ROAD | CEDAR BLUFF RESERVOIR N. OF DAM | TREGO | 40 | 23 | 34 | - 15.0 | 47.8 | | | | | 85 | SUN | 8 | 34 | 34 | 1.00 |

Percent of Change for Reservoir Stations

- 15.6 - 11.0

Kansas City Stations

| | | | | | | | | | | | | | | | | | |
|----------|---------------------------|-----------|--------|--------|--------|-------|-------|---------|---------|-----|----|--------|-----|----|--------|--------|-----|
| US-69 | 0.4 MILES S. OF 135TH ST. | JOHNSON | | 48,304 | 48,072 | | - 0.5 | * 5,595 | 5- 6 pm | THU | 12 | 61,032 | THU | 19 | 48,072 | 52,824 | .91 |
| 135TH | 135TH E. OF MUR-LEN | JOHNSON | 34,592 | 33,811 | 34,847 | 0.7 | 3.1 | 3,547 | 4- 5 pm | WED | 18 | 43,042 | THU | 19 | 34,847 | 37,183 | .94 |
| BLACKBOB | BLACKBOB RD. S. OF 139TH | JOHNSON | 21,209 | 20,600 | 20,041 | - 5.5 | - 2.7 | 2,178 | 5- 6 pm | MON | 16 | 24,479 | THU | 19 | 20,041 | 20,808 | .96 |
| I 435 | 0.8 MILES S. OF I - 70 | WYANDOTTE | 58,137 | 57,943 | 60,774 | 4.5 | 4.9 | 7,260 | 5- 6 pm | THU | 19 | 74,194 | THU | 19 | 60,774 | 64,974 | .94 |

Percent of Change for Kansas City Stations

1.5 2.9

Salina Stations

| | | | | | | | | | | | | | | | | | |
|----------|--------------------------------|--------|--------|--------|--------|-----|-------|-------|---------|-----|----|--------|-----|----|--------|--------|-----|
| OHIO ST. | OHIO ST. N. OF WESTCHESTER DR. | SALINE | 15,496 | 16,344 | 15,903 | 2.6 | - 2.7 | 1,822 | 4- 5 pm | THU | 19 | 20,574 | THU | 19 | 15,903 | 17,778 | .89 |
|----------|--------------------------------|--------|--------|--------|--------|-----|-------|-------|---------|-----|----|--------|-----|----|--------|--------|-----|

Percent of Change for Salina Stations

2.6 - 2.7

Topeka Stations

| | | | | | | | | | | | | | | | | | |
|-----------|------------------------------------|---------|--------|--------|--------|--------|--------|-------|---------|-----|----|--------|-----|----|--------|--------|-----|
| 45TH ST. | 45TH ST. E. OF INDIANA | SHAWNEE | 6,530 | 6,445 | 5,250 | - 19.6 | - 18.5 | 621 | 5- 6 pm | TUE | 17 | 6,242 | TUE | 17 | 5,250 | 5,588 | .94 |
| N. TOPEKA | TOPEKA BLVD. NORTH OF PARAMORE ST. | SHAWNEE | 17,549 | 15,808 | 15,928 | - 9.2 | 0.8 | 2,078 | 5- 6 pm | MON | 2 | 19,841 | MON | 2 | 15,928 | 17,687 | .90 |
| I 70 | I 70 E. OF MACVICAR ST. | SHAWNEE | 41,835 | 41,238 | 42,083 | 0.6 | 2.0 | 4,864 | 5- 6 pm | FRI | 20 | 54,437 | FRI | 20 | 42,083 | 45,828 | .92 |
| I 470 | I 470 N.W. OF HUNTOON | SHAWNEE | 31,908 | 31,782 | 31,470 | - 1.4 | - 1.0 | 3,733 | 5- 6 pm | THU | 19 | 40,381 | THU | 19 | 31,470 | 34,391 | .92 |
| US 40 | US 40 E. OF TECUMSEH RD. | SHAWNEE | 4,390 | 4,327 | 3,806 | - 13.3 | - 12.0 | 592 | 7- 8 am | TUE | 3 | 5,079 | TUE | 3 | 3,806 | 4,273 | .89 |
| US 75 | US 75 N. OF S.W. 57TH | SHAWNEE | 13,385 | 13,526 | 13,213 | - 1.3 | - 2.3 | 1,645 | 4- 5 pm | TUE | 17 | 17,026 | THU | 19 | 13,213 | 14,728 | .90 |
| K 4 | 1MI. S. OF JCT. US-24 | SHAWNEE | 7,837 | 7,695 | 7,521 | - 4.0 | - 2.3 | 1,049 | 7- 8 am | TUE | 3 | 9,447 | TUE | 3 | 7,521 | 8,363 | .90 |

Percent of Change for Topeka Stations

- 3.4 - 1.3

Month of December, 2013

Sparse Matrix Model

Date: 14-JAN-2014

| | | | | | | | | | | | | | | | |
|---------------------------------|------|------|----------------|------|------------------------|------|-----|-----|---------------------|-----|-----|-------|-------|---------|--|
| ---- Average Daily Traffic ---- | | | Percent Change | | ---- Maximum Hour ---- | | | | --- Maximum Day --- | | | 7 Day | 5 Day | 7 Day / | |
| for the Month | | | Month | | Volume | Hour | DOW | Day | Volume | DOW | Day | Avg | Avg | 5 Day | |
| 2011 | 2012 | 2013 | 2011 | 2012 | | | | | | | | | | | |

| | | |
|-------------------|----------------------|--------|
| Route Description | Location Description | County |
|-------------------|----------------------|--------|

Wichita Stations

| | | | | | | | | | | | | | | | | | |
|--------------|----------------------------|----------|--------|--------|--------|--------|-------|-------|---------|-----|----|---------|-----|----|--------|--------|-----|
| K 96 | K-96 E. OF GREENWICH RD. | SEDGWICK | 21,264 | 21,393 | 22,201 | 4.4 | 3.8 | 2,874 | 5- 6 pm | TUE | 3 | 27,173 | FRI | 13 | 22,201 | 25,025 | .89 |
| US 54 | KELLOGG E. OF WEST ST. | SEDGWICK | 83,940 | 87,950 | 85,484 | 1.8 | - 2.8 | 9,339 | 4- 5 pm | THU | 19 | 111,686 | FRI | 20 | 85,484 | 94,432 | .91 |
| 13TH ST. | 13TH ST W. OF PINECREST | SEDGWICK | 13,638 | 11,899 | 12,139 | - 11.0 | 2.0 | 1,527 | 5- 6 pm | TUE | 3 | 15,357 | TUE | 3 | 12,139 | 13,189 | .92 |
| ROCK RD. | ROCK RD. S. OF CENTRAL AVE | SEDGWICK | 33,457 | 33,943 | 34,021 | 1.7 | 0.2 | 3,464 | 3- 4 pm | SAT | 14 | 42,656 | FRI | 13 | 34,021 | 35,455 | .96 |
| 21ST ST. | 21ST ST E. OF WASHINGTON | SEDGWICK | 11,780 | 12,098 | 11,084 | - 5.9 | - 8.4 | 1,303 | 4- 5 pm | MON | 16 | 13,656 | FRI | 20 | 11,084 | 12,049 | .92 |
| HILLSIDE ST. | HILLSIDE S. OF 15TH ST | SEDGWICK | 10,049 | 9,683 | 8,997 | - 10.5 | - 7.1 | 1,135 | 5- 6 pm | TUE | 3 | 12,676 | TUE | 3 | 8,997 | 9,889 | .91 |
| I 235 | I 235 S. OF MAPLE ST | SEDGWICK | 44,399 | 44,608 | 41,853 | - 5.7 | - 6.2 | 4,843 | 5- 6 pm | THU | 19 | 53,987 | FRI | 13 | 41,853 | 46,534 | .90 |
| I 135 | I-135 N. OF 21ST ST. | SEDGWICK | 53,212 | 56,241 | 60,664 | 14.0 | 7.9 | 7,441 | 5- 6 pm | WED | 18 | 81,547 | THU | 19 | 60,664 | 69,279 | .88 |

Percent of Change for Wichita Stations

1.7 - .5

NOTE: * Excluded from Percent Change Totals