

**KANSAS DEPARTMENT OF TRANSPORTATION
BUREAU OF TRANSPORTATION PLANNING**

AUGUST 2013

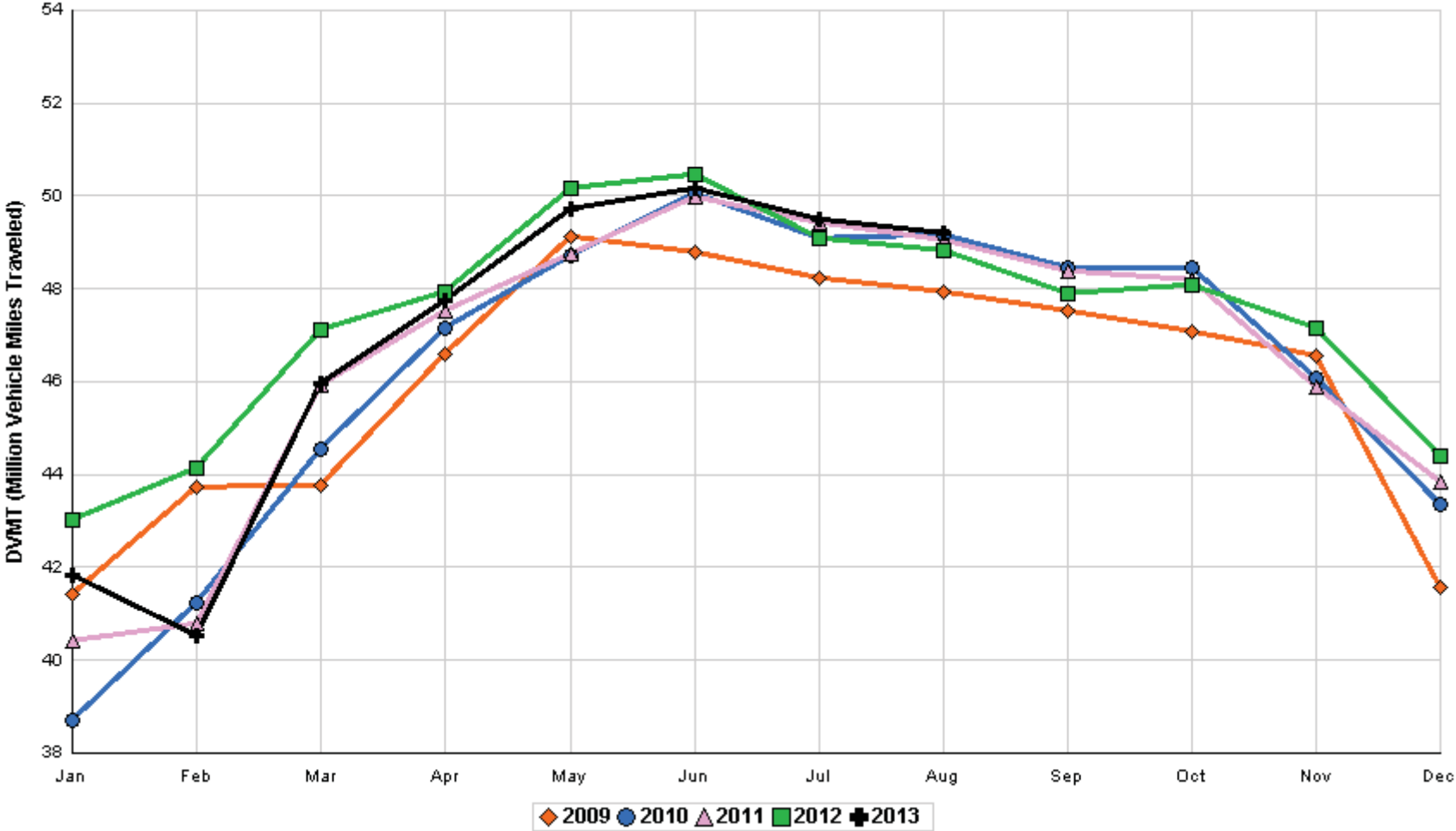
SIGNIFICANT FACTS AND TRENDS



Travel on the Kansas State Highway System				
	Daily Vehicle Miles		% Change	
	(In Millions)		2012 to 2013	
Month	2012	2013	Month	Year
Jan	43.023	41.827	- 2.8	- 2.8
Feb	44.153	40.524	- 8.2	- 5.5
Mar	47.116	45.976	- 2.4	- 4.4
Apr	47.916	47.741	- 0.4	- 3.4
May	50.155	49.709	- 0.9	- 2.8
Jun	50.464	50.184	- 0.6	- 2.4
Jul	49.090	49.502	0.8	- 1.9
Aug	48.829	49.198	0.8	- 1.6
Sep	47.889			
Oct	48.089			
Nov	47.139			
Dec	44.405			
Average	47.356			

**Contact the Traffic and Field Operations Unit with questions or requests at:
(785)-296-3841 or E-mail: TrafficCounts@ksdot.org
The Monthly Average Daily Traffic (MADT) is Calculated Utilizing the
Day-Of-Week (DOW) Method. Missing Traffic Count Data will Not be Estimated
Therefore Station Summary Data will be Blank where Data is Not Available.**

Total Travel on Kansas State Highway System 2009 - 2013



Month of August, 2013

Sparse Matrix Model

Date: 25-SEP-2013

Route Description	Location Description	County	Average Daily Traffic for the Month			Percent Change Month		Maximum Hour				Maximum Day			7 Day Avg	5 Day Avg	7 Day / 5 Day Avg
			2011	2012	2013	2011	2012	Volume	Hour	DOW	Day	Volume	DOW	Day			
Rural State Highways for District 1																	
US-75	1.2 MILES N. OF US-36 I.C.	BROWN	6,556	3,898	3,978	- 39.3	2.1	418	4- 5 pm	FRI	30	5,441	FRI	30	3,978	4,089	.97
US 24	1.5 MILES N.E. OF LAWRENCE	DOUGLAS	7,385	6,842	7,023	- 4.9	2.6	763	5- 6 pm	THU	1	8,214	SAT	10	7,023	7,130	.98
US 56	4 MILES E. OF OVERBROOK	DOUGLAS	2,021	2,097	2,042	1.0	- 2.6	255	5- 6 pm	SAT	10	2,658	SAT	10	2,042	2,060	.99
US 75	5.8 MILES N. OF HOLTON	JACKSON	6,704	5,804	5,947	- 11.3	2.5	661	4- 5 pm	FRI	30	7,977	FRI	30	5,947	6,001	.99
K 10	0.2 MILES E. OF RS. 346 INTCHG.	JOHNSON	33,134	32,097	32,192	- 2.8	0.3	3,481	5- 6 pm	TUE	20	39,290	FRI	23	32,192	34,196	.94
K 99	2.9 MILES S. OF EMPORIA	LYON	4,067	3,852	3,506	- 13.8	- 9.0	459	5- 6 pm	FRI	2	5,095	FRI	2	3,506	3,841	.91
US 36	13 MILES E. OF MARYSVILLE	MARSHALL	3,332	2,513	2,576	- 22.7	2.5	293	4- 5 pm	FRI	30	3,194	FRI	30	2,576	2,685	.96
K 68	0.15 MILES E. OF JCT K 268	OSAGE	2,804	2,605	2,319	- 17.3	- 11.0	252	6- 7 pm	FRI	2	3,111	SAT	3	2,319	2,207	1.05
K 268	0.1 MILES E. OF US 75	OSAGE	2,960	2,803													
K 18	0.7 MILES N.E. OF OGDEN	RILEY															
US 24	4 MILES N. OF MANHATTAN	RILEY	7,243	7,105	7,366	1.7	3.7	793	4- 5 pm	FRI	30	9,561	FRI	30	7,366	7,208	1.02
US 24	1 MILE N.W. OF ROSSVILLE	SHAWNEE	4,418	4,108	4,281	- 3.1	4.2	483	5- 6 pm	WED	14	5,166	FRI	30	4,281	4,628	.93
I 70	4.7 MILES E. OF K 30 INTCHG. (MAPLE HILL)	WABAUNSEE	21,917	20,759	22,071	0.7	6.3	2,379	5- 6 pm	FRI	30	28,345	FRI	30	22,071	21,409	1.03

Percent of Change for District 1 Stations

- 6.3 1.8

Rural State Highways for District 2

K 9	5.8 MILES E. OF CLIFTON	CLAY	354	368	352	- 0.6	- 4.3	59	1- 2 pm	SAT	24	522	FRI	16	352	377	.93
K 15	3.3 MILES N. OF CLAY CENTER	CLAY	1,906	1,867	1,868	- 2.0	0.1	215	5- 6 pm	FRI	9	2,225	FRI	30	1,868	2,004	.93
I 70	W. OF K-232 INTCHG. (WILSON)	ELLSWORTH	12,154		12,605	3.7		1,523	3- 4 pm	SUN	4	16,558	FRI	2	12,605	12,121	1.04
K 141	2.8 MILES S. OF KANOPOLIS DAM	ELLSWORTH	694	564	661	- 4.8	17.2	123	3- 4 pm	SUN	11	1,330	SAT	31	661	549	1.20
K 18	1.8 MILES W. OF JUNCTION CITY	GEARY	1,302	1,336	1,515	16.4	13.4	224	7- 8 am	MON	26	2,004	FRI	23	1,515	1,647	.92
I 70	4.5 MILES S.W. OF JUNCTION CITY	GEARY	17,704	16,419	17,994	1.6	9.6	2,046	5- 6 pm	FRI	30	23,904	FRI	30	17,994	17,830	1.01
US 77	4 MILES S. OF JUNCTION CITY	GEARY	3,823		4,029	5.4		682	4- 5 pm	FRI	30	6,363	FRI	30	4,029	4,048	1.00
US 36	1 MILE E. OF MANKATO	JEWELL	2,005	1,870	1,943	- 3.1	3.9	204	3- 4 pm	FRI	2	2,483	FRI	2	1,943	2,069	.94
K 18	0.5 MILES W. OF LINCOLN	LINCOLN	1,140	1,097	986	- 13.5	- 10.1	161	10-11 am	MON	19	1,236	MON	19	986	1,051	.94
I 135	0.5 MILES N. OF US 56 INTCHG. (MCPHERSON)	MCPHERSON	12,669		13,513	6.7		1,450	5- 6 pm	FRI	30	17,332	FRI	30	13,513	13,232	1.02
K 14	3 MILES S. OF BELOIT	MITCHELL	842	848	845	0.4	- 0.4	147	10-11 am	SAT	17	1,090	FRI	16	845	926	.91
US 81	2.5 MILES S. OF BELLEVILLE	REPUBLIC		5,366	5,273		- 1.7	564	5- 6 pm	SAT	3	7,496	FRI	2	5,273	5,305	.99

Percent of Change for District 2 Stations

3.1 5.7

Rural State Highways for District 3

US 83	6.2 MILES S. OF OAKLEY	LOGAN	2,041	2,025	1,853	- 9.2	- 8.5	186	2- 3 pm	THU	8	2,275	FRI	2	1,853	1,959	.95
US 36	9.5 MILES W. OF NORTON	NORTON	1,104	1,101	1,046	- 5.3	- 5.0	122	5- 6 pm	FRI	9	1,389	FRI	9	1,046	1,105	.95
US 183	1.2 MILES S. OF PHILLIPSBURG	PHILLIPS	2,588	2,538	2,393	- 7.5	- 5.7	273	5- 6 pm	WED	14	3,356	FRI	2	2,393	2,535	.94
K 23	14.5 MILES S. OF HOXIE	SHERIDAN	883	894	799	- 9.5	- 10.6	105	4- 5 pm	FRI	30	1,072	FRI	30	799	867	.92
I 70	2.2 MI. E OF KANORADO EXIT	SHERMAN	10,012	9,905	9,964	- 0.5	0.6	1,325	2- 3 pm	SUN	4	13,688	SUN	4	9,964	9,541	1.04
US 24	7.3 MILES E. OF COLBY	THOMAS	1,868	1,938	1,911	2.3	- 1.4	207	4- 5 pm	FRI	30	2,367	FRI	2	1,911	2,019	.95
K 25	1.8 MILES S. OF COLBY	THOMAS	857	848	738	- 13.9	- 13.0	80	2- 3 pm	WED	21	866	WED	28	738	811	.91
I 70	1 MILE W. OF WAKEENEY	TREGO	11,466	11,754	11,407	- 0.5	- 3.0	1,350	2- 3 pm	SUN	11	14,751	FRI	2	11,407	11,153	1.02
US 40	1.4 MILES E. OF KAN-COLO ST. LINE	WALLACE	617	638	573	- 7.1	- 10.2	70	10-11 am	FRI	2	740	FRI	30	573	606	.95

Percent of Change for District 3 Stations

- 2.4 - 3.0

Month of August, 2013

Sparse Matrix Model

Date: 25-SEP-2013

---- Average Daily Traffic ----
for the Month

Percent Change
Month

---- Maximum Hour ----
Volume Hour DOW Day

--- Maximum Day ---
Volume DOW Day

7 Day Avg
5 Day Avg
7 Day / 5 Day Avg

Route Description Location Description County

2011 2012 2013 2011 2012

Rural State Highways for District 4

US 54	3 MILES W. OF IOLA	ALLEN	2,849	2,852	2,890	1.4	1.3	303	3- 4 pm	FRI	2	3,621	FRI	30	2,890	3,035	.95
US 169	1 MILE N. OF GREELEY	ANDERSON	3,382	3,312	3,282	- 3.0	- 0.9	348	5- 6 pm	FRI	30	4,248	FRI	30	3,282	3,413	.96
US 69	2 MILES N. OF FT SCOTT	BOURBON			6,382			900	5- 6 pm	FRI	30	8,920	FRI	30	6,382	6,415	.99
US 166	0.5 MILES W. OF NIOTAZE	CHAUTAUQUA	2,442	2,463	2,416	- 1.1	- 1.9	309	6- 7 pm	FRI	30	3,530	FRI	30	2,416	2,498	.97
I 35	2 MILES W. OF K- 131 INTCHG. N. OF LEBO	COFFEY	13,417	12,925	13,850	3.2	7.2	1,630	5- 6 pm	FRI	30	18,258	FRI	30	13,850	13,512	1.03
US 59	4.3 MILES S. OF OTTAWA	FRANKLIN	5,748	5,714	5,790	0.7	1.3	637	5- 6 pm	FRI	30	7,211	FRI	30	5,790	5,967	.97
I 35	2 MILES N.E. OF THE WELLSVILLE INTCHG.	FRANKLIN	19,966	20,000	20,992	5.1	5.0	2,267	5- 6 pm	FRI	30	26,340	FRI	30	20,992	21,344	.98
US 400	3 MILES E. OF PARSONS	LABETTE	3,736	3,843	4,206	12.6	9.4	529	5- 6 pm	FRI	30	6,337	FRI	30	4,206	4,269	.99
US 59	4 MILES S. OF ERIE	NEOSHO	2,891	2,878	2,678	- 7.4	- 6.9	332	4- 5 pm	FRI	30	3,721	FRI	30	2,678	2,936	.91
US 169	1 MILE N. OF THAYER	NEOSHO		4,166	4,438		6.5	544	6- 7 pm	FRI	30	6,294	FRI	30	4,438	4,718	.94
US 75	1 MILE N. OF YATES CENTER	WOODSON	2,637	2,597	2,644	0.3	1.8	296	5- 6 pm	FRI	30	3,626	FRI	30	2,644	2,724	.97
K 105	2 MILES N. OF TORONTO	WOODSON	581	612	606	4.3	- 1.0	89	5- 6 pm	FRI	2	944	FRI	30	606	606	1.00

3.0 4.0

Percent of Change for District 4 Stations

Rural State Highways for District 5

US 56	5.5 MILES E. OF GREAT BEND	BARTON	5,194	5,110	5,193	0.0	1.6	542	5- 6 pm	WED	28	6,317	FRI	30	5,193	5,567	.93
US 77	2 MILES N. OF EL DORADO	BUTLER	2,696	2,715	2,889	7.2	6.4	316	5- 6 pm	FRI	30	3,725	FRI	2	2,889	2,893	1.00
US 400	1.5 MILES E. OF LEON	BUTLER	4,563	5,081	4,966	8.8	- 2.3	716	6- 7 pm	FRI	30	7,531	FRI	30	4,966	4,937	1.01
US 77	3.7 MILES N. OF ARKANSAS CITY	COWLEY	10,394	10,908	10,860	4.5	- 0.4	1,133	3- 4 pm	FRI	23	13,932	FRI	2	10,860	11,687	.93
US 160	6.2 MILES E. OF ATTICA	HARPER	1,345	1,638	1,653	22.9	0.9	166	3- 4 pm	FRI	23	2,030	FRI	9	1,653	1,807	.91
US 50	3 MILES N.E. OF NEWTON	HARVEY	6,169	6,146	6,261	1.5	1.9	701	3- 4 pm	FRI	30	8,217	FRI	30	6,261	6,368	.98
US 54	5.8 MILES W. OF KINGMAN	KINGMAN	4,831	5,448													
US 54	1.5 MILES W. OF HAVILAND	KIOWA	4,935	5,371	5,056	2.5	- 5.9	514	2- 3 pm	FRI	9	6,061	FRI	2	5,056	5,088	.99
US 183	7 MILES S. OF GREENSBURG	KIOWA	1,096	1,057	968	- 11.7	- 8.4	98	2- 3 pm	THU	1	1,152	FRI	30	968	1,047	.92
US 56	5 MILES S.W. OF LARNED	PAWNEE	2,195	2,198	2,187	- 0.4	- 0.5	234	4- 5 pm	FRI	30	2,790	FRI	30	2,187	2,280	.96
K 61	5 MILES S.W. OF ARLINGTON	RENO	1,966	1,938	1,978	0.6	2.1	194	3- 4 pm	FRI	30	2,486	FRI	30	1,978	2,072	.95
K 14	1 MILE N. OF LYONS	RICE	1,411	1,475	1,358	- 3.8	- 7.9	151	2- 3 pm	FRI	30	1,713	FRI	30	1,358	1,426	.95
K 42	3 MILES N.E. OF VIOLA	SEDGWICK		4,659	4,618		- 0.9	481	4- 5 pm	FRI	23	5,395	FRI	30	4,618	5,008	.92
US 281	0.5 MILES S. OF ST. JOHN	STAFFORD	2,458	2,438	2,556	4.0	4.8	271	5- 6 pm	FRI	30	3,155	FRI	30	2,556	2,799	.91
US 81	4.1 MILES S. OF WELLINGTON	SUMNER	1,729	1,783	1,753	1.4	- 1.7	164	5- 6 pm	FRI	9	2,040	WED	28	1,753	1,843	.95

3.3 - .4

Percent of Change for District 5 Stations

Rural State Highways for District 6

US 83	8.2 MILES S. OF GARDEN CITY	FINNEY	4,413	4,337	4,588	4.0	5.8	432	5- 6 pm	TUE	6	5,075	TUE	27	4,588	4,906	.94
US 50	4.5 MILES W. OF DODGE CITY	FORD	6,131	6,675	6,282	2.5	- 5.9	568	5- 6 pm	THU	1	7,503	FRI	2	6,282	6,536	.96
US 400	4.5 MILES W. OF DODGE CITY	FORD	1,076	1,299	1,251	16.3	- 3.7	132	4- 5 pm	FRI	2	1,499	FRI	23	1,251	1,369	.91
K 25	2.5 MILES N. OF ULYSSES	GRANT	1,564	1,627	1,785	14.1	9.7	176	5- 6 pm	TUE	20	2,185	TUE	20	1,785	1,989	.90
K 27	15 MILES N OF TRIBUNE	GREELEY	716	721	692	- 3.4	- 4.0	72	9-10 am	THU	1	878	THU	1	692	764	.91
US 50	0.8 MILES E. OF KAN-COLO ST. LINE	HAMILTON	2,116	1,847	1,798	- 15.0	- 2.7	196	2- 3 pm	FRI	2	2,460	FRI	2	1,798	1,798	1.00
US 283	8.3 MILES N. OF JETMORE	HODGEMAN	928	1,121	966	4.1	- 13.8	105	10-11 am	FRI	30	1,242	FRI	30	966	1,036	.93
US 54	3.7 MILES W. OF MEADE	MEADE	3,528	3,588	3,834	8.7	6.9	328	2- 3 pm	FRI	2	4,288	FRI	2	3,834	3,927	.98
K 96	12 MILES W. OF SCOTT CITY	WICHITA	1,306	1,309	1,346	3.1	2.8	140	5- 6 pm	THU	8	1,685	FRI	30	1,346	1,478	.91

3.5 .1

Percent of Change for District 6 Stations

Month of August, 2013

Sparse Matrix Model

Date: 25-SEP-2013

---- Average Daily Traffic ----
for the Month
2011 2012 2013

Percent Change
Month
2011 2012

---- Maximum Hour ----
Volume Hour DOW Day

--- Maximum Day ---
Volume DOW Day

7 Day Avg
5 Day Avg
7 Day / 5 Day Avg

Route Description Location Description County

Rural Secondary Stations

RS 61	6.5 MILES S.W. OF HIAWATHA	BROWN	207	287	250	20.8	- 12.9	55	9-10 am	MON	5	350	MON	5	250	270	.93
RS 463	0.7 MILES S.W. OF BELOIT	MITCHELL	210	249	251	19.5	0.8	35	3- 4 pm	THU	22	318	THU	22	251	270	.93
RS 272	2 MILES S. OF QUINTER	GOVE	408	326	342	- 16.2	4.9	48	4- 5 pm	MON	5	439	TUE	13	342	369	.93
RS 13	0.5 MILES N. OF BUSH CITY	ANDERSON	351	302	439	25.1	45.4	102	4- 5 pm	SAT	17	723	SAT	17	439	453	.97
RS 2316	3 MILES E. OF PARSONS	LABETTE	1,748	1,772	1,723	- 1.4	- 2.8	185	4- 5 pm	TUE	20	2,134	FRI	30	1,723	1,861	.93
RS 303	0.8 MI. S. OF US-54 & K17 JCT. (MIDWAY)	KINGMAN	299	311	297	- 0.7	- 4.5	39	2- 3 pm	SUN	18	342	THU	22	297	309	.96
RS 251	6 MILES W. OF FORD	FORD	460	500	477	3.7	- 4.6	59	5- 6 pm	SUN	4	627	FRI	2	477	483	.99

Percent of Change for Rural Secondary Stations

2.6 .9

Reservoir Stations

K 237	1.5 MILES N. OF JCT. US 24	JEFFERSON	1,376	1,356	1,143	- 16.9	- 15.7	165	5- 6 pm	SUN	11	2,201	SAT	10	1,143	989	1.16
LOCAL ROAD	KANOPOLIS RESERVOIR N. OF DAM	ELLSWORTH	242	162	222	- 8.3	37.0					592	SAT	31	222	173	1.28
LOCAL ROAD	KANOPOLIS RESERVOIR S. OF DAM	ELLSWORTH	298	368	547	83.6	48.6					1,166	SAT	10	547	401	1.36
LOCAL ROAD	CEDAR BLUFF RESERVOIR N. OF DAM	TREGO	256	306	391	52.7	27.8					1,043	SAT	31	391	277	1.41

Percent of Change for Reservoir Stations

6.0 5.1

Kansas City Stations

US-69	0.4 MILES S. OF 135TH ST.	JOHNSON			51,889		*	5,525	5- 6 pm	TUE	13	59,895	FRI	16	51,889	56,086	.93
135TH	135TH E. OF MUR-LEN	JOHNSON	34,381	35,050	36,638	6.6	4.5	3,594	5- 6 pm	FRI	9	42,097	FRI	9	36,638	38,517	.95
BLACKBOB	BLACKBOB RD. S. OF 139TH	JOHNSON	23,152	20,527	22,095	- 4.6	7.6	2,185	5- 6 pm	WED	14	23,981	FRI	16	22,095	22,347	.99
I 435	0.8 MILES S. OF I - 70	WYANDOTTE	61,109	61,461	65,564	7.3	6.7	7,375	5- 6 pm	FRI	16	77,341	FRI	30	65,564	69,090	.95

Percent of Change for Kansas City Stations

4.8 6.2

Salina Stations

OHIO ST.	OHIO ST. N. OF WESTCHESTER DR.	SALINE	17,915	17,152	18,007	0.5	5.0	1,826	4- 5 pm	THU	15	21,928	FRI	9	18,007	19,760	.91
----------	--------------------------------	--------	--------	--------	--------	-----	-----	-------	---------	-----	----	--------	-----	---	--------	--------	-----

Percent of Change for Salina Stations

.5 5.0

Topeka Stations

45TH ST.	45TH ST. E. OF INDIANA	SHAWNEE	7,168	7,822	1,870	- 73.9	- 76.1	315	5- 6 pm	FRI	23	3,088	FRI	30	1,870	1,982	.94
N. TOPEKA	TOPEKA BLVD. NORTH OF PARAMORE ST.	SHAWNEE	18,846	16,241	14,914	- 20.9	- 8.2	1,564	12- 1 pm	FRI	2	18,704	FRI	2	14,914	16,201	.92
I 70	I 70 E. OF MACVICAR ST.	SHAWNEE	46,242	46,064	48,291	4.4	4.8	5,421	4- 5 pm	FRI	30	61,419	FRI	30	48,291	51,937	.93
I 470	I 470 N.W. OF HUNTOON	SHAWNEE	31,462	33,201	33,659	7.0	1.4	3,711	4- 5 pm	FRI	30	40,983	FRI	30	33,659	36,249	.93
US 40	US 40 E. OF TECUMSEH RD.	SHAWNEE	4,953	4,954	5,393	8.9	8.9	697	5- 6 pm	WED	21	6,522	FRI	23	5,393	5,837	.92
US 75	US 75 N. OF S.W. 57TH	SHAWNEE	14,656	15,896	14,494	- 1.1	- 8.8	1,581	7- 8 am	TUE	13	17,118	FRI	2	14,494	15,812	.92
K 4	1MI. S. OF JCT. US-24	SHAWNEE	9,047	8,314	8,943	- 1.1	7.6	1,094	7- 8 am	TUE	27	10,593	FRI	16	8,943	9,662	.93

Percent of Change for Topeka Stations

- 3.6 - 3.7

Month of August, 2013

Sparse Matrix Model

Date: 25-SEP-2013

---- Average Daily Traffic ----			Percent Change		---- Maximum Hour ----				--- Maximum Day ---			7 Day	5 Day	7 Day /	
for the Month			Month		Volume	Hour	DOW	Day	Volume	DOW	Day	Avg	Avg	5 Day	Avg
2011	2012	2013	2011	2012											

Route Description	Location Description	County
-------------------	----------------------	--------

Wichita Stations

K 96	K-96 E. OF GREENWICH RD.	SEDGWICK	22,757	22,631	23,796	4.6	5.1	2,957	7- 8 am	WED	21	27,683	FRI	23	23,796	26,011	.91
US 54	KELLOGG E. OF WEST ST.	SEDGWICK	85,789	92,168	92,415	7.7	0.3	8,864	5- 6 pm	TUE	6	108,447	FRI	23	92,415	101,293	.91
13TH ST.	13TH ST W. OF PINECREST	SEDGWICK	14,371	13,959	11,500	-20.0	-17.6	1,214	5- 6 pm	THU	22	13,638	FRI	30	11,500	12,408	.93
ROCK RD.	ROCK RD. S. OF CENTRAL AVE	SEDGWICK	29,539	32,244	32,925	11.5	2.1	3,095	4- 5 pm	FRI	9	38,362	FRI	16	32,925	34,338	.96
21ST ST.	21ST ST E. OF WASHINGTON	SEDGWICK	12,488	13,136	13,041	4.4	- 0.7	1,270	5- 6 pm	THU	22	15,183	FRI	23	13,041	14,044	.93
HILLSIDE ST.	HILLSIDE S. OF 15TH ST	SEDGWICK		11,248	9,939		- 11.6	1,025	5- 6 pm	FRI	16	12,376	WED	21	9,939	11,101	.90
I 235	I 235 S. OF MAPLE ST	SEDGWICK	49,733	47,256	47,251	- 5.0	0.0	4,797	5- 6 pm	THU	15	54,231	FRI	16	47,251	51,190	.92
I 135	I-135 N. OF 21ST ST.	SEDGWICK	66,199	67,792	69,354	4.8	2.3	7,627	7- 8 am	THU	22	82,867	FRI	30	69,354	78,519	.88

Percent of Change for Wichita Stations

3.3 - .1

NOTE: * Excluded from Percent Change Totals