

**KANSAS DEPARTMENT OF TRANSPORTATION
BUREAU OF TRANSPORTATION PLANNING**

NOVEMBER 2014

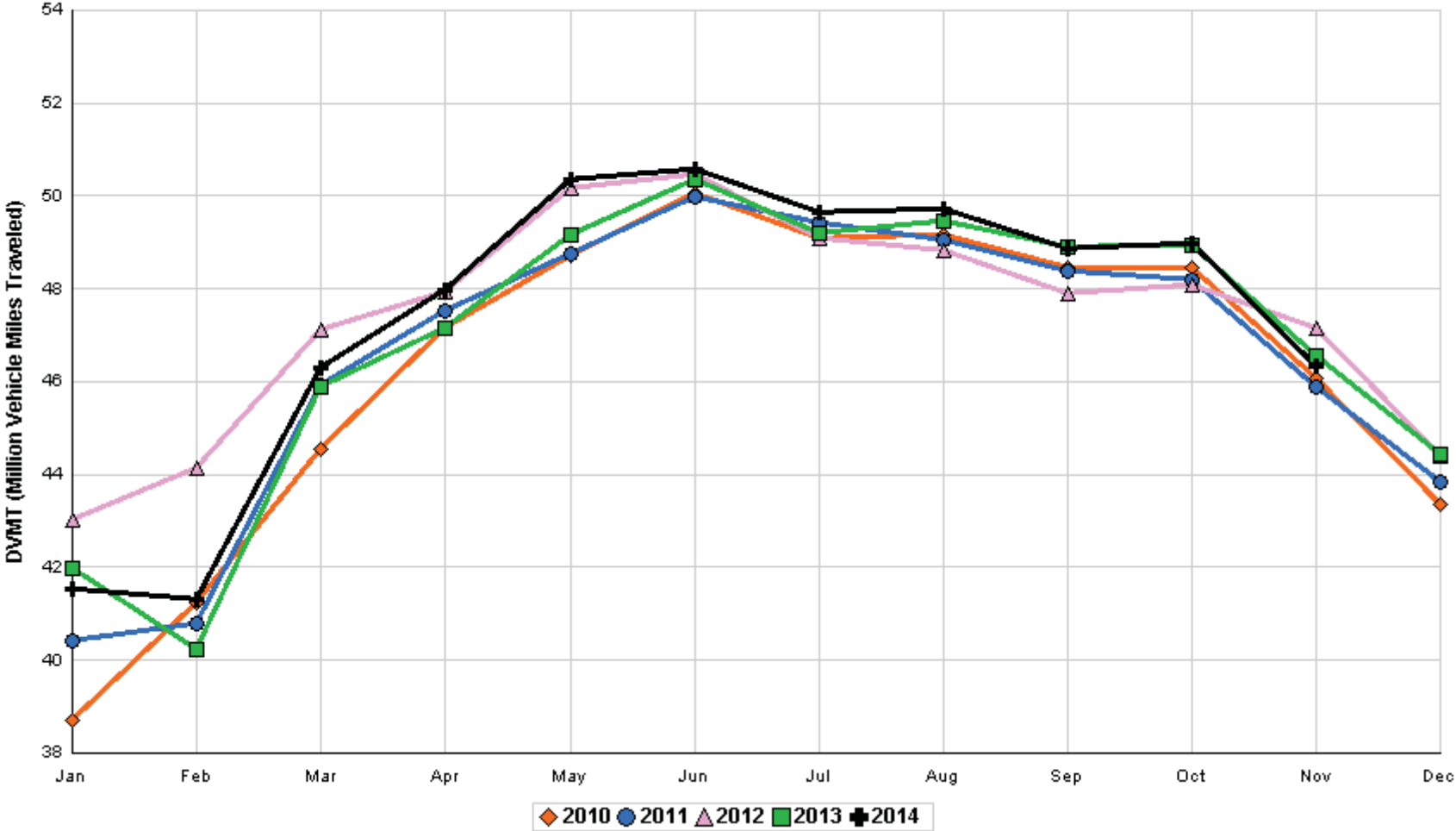
SIGNIFICANT FACTS AND TRENDS



Travel on the Kansas State Highway System				
	Daily Vehicle Miles		% Change	
	(In Millions)		2013 to 2014	
Month	2013	2014	Month	Year
Jan	41.967	41.540	- 1.0	- 1.0
Feb	40.249	41.322	2.7	0.8
Mar	45.891	46.309	0.9	0.8
Apr	47.138	47.954	1.7	1.1
May	49.171	50.335	2.4	1.4
Jun	50.352	50.563	0.4	1.2
Jul	49.184	49.647	0.9	1.1
Aug	49.468	49.706	0.5	1.1
Sep	48.898	48.856	- 0.1	0.9
Oct	48.938	48.967	0.1	0.8
Nov	46.540	46.323	- 0.5	0.7
Dec	44.445			
Average	46.853			

**Contact the Traffic and Field Operations Unit with questions or requests at:
(785)-296-3841 or E-mail: TrafficCounts@ksdot.org
The Monthly Average Daily Traffic (MADT) is Calculated Utilizing the
Day-Of-Week (DOW) Method. Missing Traffic Count Data will Not be Estimated
Therefore Station Summary Data will be Blank where Data is Not Available.**

Total Travel on Kansas State Highway System 2010 - 2014



Month of November, 2014

Sparse Matrix Model

Date: 18-DEC-2014

Route Description	Location Description	County	Average Daily Traffic for the Month			Percent Change Month		Maximum Hour				Maximum Day			7 Day Avg	5 Day Avg	7 Day / 5 Day Avg
			2012	2013	2014	2012	2013	Volume	Hour	DOW	Day	Volume	DOW	Day			
Rural State Highways for District 1																	
US-75	1.2 MILES N. OF US-36 I.C.	BROWN	3,735	3,827	4,059	8.7	6.1	507	2- 3 pm	WED	26	5,895	WED	26	4,059	4,220	.96
US 24	1.5 MILES N.E. OF LAWRENCE	DOUGLAS	6,117	6,165	6,299	3.0	2.2	786	5- 6 pm	MON	3	7,789	FRI	7	6,299	6,726	.94
US 56	4 MILES E. OF OVERBROOK	DOUGLAS	1,874	2,044	1,921	2.5	- 6.0	311	11-12 pm	THU	27	2,320	FRI	7	1,921	1,975	.97
US 75	5.8 MILES N. OF HOLTON	JACKSON	5,756	5,562	6,050	5.1	8.8	658	4- 5 pm	WED	26	8,003	WED	26	6,050	6,188	.98
K 10	0.2 MILES E. OF RS. 346 INTCHG.	JOHNSON	30,602	31,473	29,799	- 2.6	- 5.3	3,918	5- 6 pm	MON	24	37,303	FRI	14	29,799	31,826	.94
K 99	2.9 MILES S. OF EMPORIA	LYON	3,681	3,682	3,624	- 1.5	- 1.6	440	5- 6 pm	FRI	14	4,578	FRI	7	3,624	3,910	.93
US 36	13 MILES E. OF MARYSVILLE	MARSHALL	2,452	2,330	2,204	- 10.1	- 5.4	265	5- 6 pm	FRI	7	2,928	FRI	7	2,204	2,342	.94
K 68	0.15 MILES E. OF JCT K 268	OSAGE	2,433	2,072	2,352	- 3.3	13.5	300	10-11 am	THU	27	2,795	FRI	14	2,352	2,425	.97
K 268	0.1 MILES E. OF US 75	OSAGE	2,651														
K 18	0.7 MILES N.E. OF OGDEN	RILEY			21,594			2,829	4- 5 pm	FRI	14	27,889	FRI	14	21,594	22,957	.94
US 24	4 MILES N. OF MANHATTAN	RILEY	6,560	6,448	6,496	- 1.0	0.7	762	5- 6 pm	FRI	7	7,994	SAT	1	6,496	6,582	.99
US 24	1 MILE N.W. OF ROSSVILLE	SHAWNEE	3,884	4,179	4,383	12.8	4.9	585	5- 6 pm	FRI	21	5,539	FRI	21	4,383	4,725	.93
I 70	4.7 MILES E. OF K 30 INTCHG. (MAPLE HILL)	WABAUNSEE	20,334	20,214	20,687	1.7	2.3	3,354	11-12 pm	SAT	29	33,969	SAT	29	20,687	19,778	1.05

Percent of Change for District 1 Stations

.5 - .1

Rural State Highways for District 2

K 9	5.8 MILES E. OF CLIFTON	CLAY	337	347	343	1.8	- 1.2	51	3- 4 pm	THU	20	450	THU	20	343	384	.89
K 15	3.3 MILES N. OF CLAY CENTER	CLAY	1,842	1,810	1,894	2.8	4.6	219	5- 6 pm	WED	5	2,333	FRI	7	1,894	2,070	.91
I 70	W. OF K-232 INTCHG. (WILSON)	ELLSWORTH	10,669	9,897	10,760	0.9	8.7	2,297	3- 4 pm	SUN	30	22,215	SUN	30	10,760	10,195	1.06
K 141	2.8 MILES S. OF KANOPOLIS DAM	ELLSWORTH	359	433	335	- 6.7	- 22.6	59	2- 3 pm	SAT	29	469	SUN	9	335	332	1.01
K 18	1.8 MILES W. OF JUNCTION CITY	GEARY	1,250	1,321	1,242	- 0.6	- 6.0	237	5- 6 pm	TUE	11	1,623	FRI	7	1,242	1,356	.92
I 70	4.5 MILES S.W. OF JUNCTION CITY	GEARY	15,926	15,578	16,527	3.8	6.1	2,415	11-12 pm	SAT	29	25,742	SAT	29	16,527	16,122	1.03
US 77	4 MILES S. OF JUNCTION CITY	GEARY	3,892	3,871	3,257	- 16.3	- 15.9	514	11-12 pm	SAT	29	4,535	SAT	29	3,257	3,279	.99
US 36	1 MILE E. OF MANKATO	JEWELL	1,863	1,744	1,730	- 7.1	- 0.8	195	11-12 pm	WED	26	2,343	FRI	7	1,730	1,862	.93
K 18	0.5 MILES W. OF LINCOLN	LINCOLN	954	961	927	- 2.8	- 3.5	160	3- 4 pm	FRI	7	1,410	FRI	7	927	1,004	.92
I 135	0.5 MILES N. OF US 56 INTCHG. (MCPHERSON)	MCPHERSON	12,888	12,881	12,812	- 0.6	- 0.5	1,557	5- 6 pm	FRI	7	16,395	FRI	7	12,812	12,679	1.01
K 14	3 MILES S. OF BELOIT	MITCHELL	818	804	814	- 0.5	1.2	99	5- 6 pm	FRI	7	1,087	FRI	7	814	897	.91
US 81	2.5 MILES S. OF BELLEVILLE	REPUBLIC	5,048	4,905	5,047	0.0	2.9	757	2- 3 pm	SUN	30	8,003	WED	26	5,047	5,077	.99

Percent of Change for District 2 Stations

- .3 2.1

Rural State Highways for District 3

US 83	6.2 MILES S. OF OAKLEY	LOGAN	1,828	1,772	1,924	5.3	8.6	211	2- 3 pm	WED	26	2,635	WED	26	1,924	2,074	.93
US 36	9.5 MILES W. OF NORTON	NORTON	942	916	909	- 3.5	- 0.8	118	2- 3 pm	WED	26	1,224	WED	26	909	973	.93
US 183	1.2 MILES S. OF PHILLIPSBURG	PHILLIPS	2,226	2,151	2,208	- 0.8	2.6	248	4- 5 pm	FRI	7	2,817	FRI	7	2,208	2,355	.94
K 23	14.5 MILES S. OF HOXIE	SHERIDAN	852	848	755	- 11.4	- 11.0	102	4- 5 pm	FRI	7	1,085	FRI	7	755	817	.92
I 70	2.2 MI. E OF KANORADO EXIT	SHERMAN	7,834	7,296	8,108	3.5	11.1	1,988	2- 3 pm	SUN	30	18,397	SUN	30	8,108	7,697	1.05
US 24	7.3 MILES E. OF COLBY	THOMAS	1,842	1,804	1,821	- 1.1	0.9	214	1- 2 pm	WED	26	2,494	WED	26	1,821	1,941	.94
K 25	1.8 MILES S. OF COLBY	THOMAS	799	648	756	- 5.4	16.7	138	1- 2 pm	FRI	7	1,075	FRI	7	756	820	.92
I 70	1 MILE W. OF WAKEENEY	TREGO	8,869	8,616	9,454	6.6	9.7	2,278	2- 3 pm	SUN	30	19,343	SUN	30	9,454	9,177	1.03
US 40	1.4 MILES E. OF KAN-COLO ST. LINE	WALLACE	517	486	477	- 7.7	- 1.9	70	2- 3 pm	SUN	30	654	TUE	4	477	506	.94

Percent of Change for District 3 Stations

2.7 7.6

Month of November, 2014

Sparse Matrix Model

Date: 18-DEC-2014

---- Average Daily Traffic ----
for the Month
2012 2013 2014

Percent Change
Month
2012 2013

---- Maximum Hour ----
Volume Hour DOW Day

--- Maximum Day ---
Volume DOW Day

7 Day Avg
5 Day Avg
7 Day / 5 Day Avg

Route Description	Location Description	County	2012	2013	2014	2012	2013	Volume	Hour	DOW	Day	Volume	DOW	Day	7 Day Avg	5 Day Avg	7 Day / 5 Day Avg
-------------------	----------------------	--------	------	------	------	------	------	--------	------	-----	-----	--------	-----	-----	-----------	-----------	-------------------

Rural State Highways for District 4

US 54	3 MILES W. OF IOLA	ALLEN	2,721	2,700	2,586	- 5.0	- 4.2	296	3- 4 pm	FRI	7	3,376	WED	26	2,586	2,732	.95
US 169	1 MILE N. OF GREELEY	ANDERSON	3,030	3,144	3,089	1.9	- 1.7	405	10-11 am	THU	27	4,100	WED	26	3,089	3,269	.94
US 69	2 MILES N. OF FT SCOTT	BOURBON		6,293	6,381		1.4	799	4- 5 pm	SUN	30	8,845	WED	26	6,381	6,512	.98
US 166	0.5 MILES W. OF NIOTAZE	CHAUTAQUA	2,485	2,390	2,405	- 3.2	0.6	294	10-11 am	THU	27	3,477	WED	26	2,405	2,499	.96
I 35	2 MILES W. OF K- 131 INTCHG. N. OF LEBO	COFFEY	14,072	12,580	13,945	- 0.9	10.9	2,324	3- 4 pm	SUN	30	23,100	WED	26	13,945	13,713	1.02
US 59	4.3 MILES S. OF OTTAWA	FRANKLIN	5,959	5,876	6,160	3.4	4.8	705	4- 5 pm	FRI	14	7,548	WED	26	6,160	6,410	.96
I 35	2 MILES N.E. OF THE WELLSVILLE INTCHG.	FRANKLIN	20,585	20,318	20,702	0.6	1.9	2,785	4- 5 pm	WED	26	30,667	WED	26	20,702	21,093	.98
US 400	3 MILES E. OF PARSONS	LABETTE	3,584	3,665	3,779	5.4	3.1	492	11-12 pm	SAT	29	5,836	WED	26	3,779	3,876	.97
US 59	4 MILES S. OF ERIE	NEOSHO	2,909	2,936	2,935	0.9	0.0	339	4- 5 pm	FRI	14	3,800	WED	26	2,935	3,259	.90
US 169	1 MILE N. OF THAYER	NEOSHO	4,093	4,467	4,164	1.7	- 6.8	522	4- 5 pm	WED	26	6,064	WED	26	4,164	4,367	.95
US 75	1 MILE N. OF YATES CENTER	WOODSON	2,670	2,660	2,712	1.6	2.0	366	10-11 am	THU	27	4,021	WED	26	2,712	2,776	.98
K 105	2 MILES N. OF TORONTO	WOODSON	555	556	492	- 11.4	- 11.5	64	11-12 pm	SUN	9	620	FRI	7	492	501	.98

.5 2.6

Percent of Change for District 4 Stations

Rural State Highways for District 5

US 56	5.5 MILES E. OF GREAT BEND	BARTON	5,013	5,070	5,142	2.6	1.4	598	5- 6 pm	FRI	21	6,274	FRI	7	5,142	5,527	.93
US 77	2 MILES N. OF EL DORADO	BUTLER	2,485	2,515	2,448	- 1.5	- 2.7	282	11-12 pm	THU	27	3,084	WED	26	2,448	2,477	.99
US 400	1.5 MILES E. OF LEON	BUTLER	4,856	5,068	4,546	- 6.4	- 10.3	864	3- 4 pm	SUN	30	6,803	SUN	30	4,546	4,672	.97
US 77	3.7 MILES N. OF ARKANSAS CITY	COWLEY	10,326	10,443	10,090	- 2.3	- 3.4	1,101	4- 5 pm	FRI	21	12,454	FRI	14	10,090	11,020	.92
US 160	6.2 MILES E. OF ATTICA	HARPER	1,535	1,484	1,417	- 7.7	- 4.5	171	5- 6 pm	TUE	4	1,785	FRI	14	1,417	1,536	.92
US 50	3 MILES N.E. OF NEWTON	HARVEY	6,204	6,199	5,794	- 6.6	- 6.5	630	10-11 am	SAT	29	7,011	WED	26	5,794	5,967	.97
US 54	14 MILES W. OF KINGMAN	KINGMAN	5,036	4,771	4,978	- 1.2	4.3	586	4- 5 pm	WED	26	7,069	WED	26	4,978	5,114	.97
US 54	1.5 MILES W. OF HAVILAND	KIOWA	5,302	5,001	5,128	- 3.3	2.5	589	2- 3 pm	WED	26	7,141	WED	26	5,128	5,293	.97
US 183	7 MILES S. OF GREENSBURG	KIOWA	983	953	918	- 6.6	- 3.7	110	3- 4 pm	TUE	25	1,286	TUE	25	918	1,014	.91
US 56	5 MILES S.W. OF LARNED	PAWNEE	2,186	2,102	2,212	1.2	5.2	261	2- 3 pm	SUN	30	3,016	WED	26	2,212	2,309	.96
K 61	5 MILES S.W. OF ARLINGTON	RENO	2,037	2,012	2,046	0.4	1.7	203	10-11 am	THU	27	2,390	WED	26	2,046	2,139	.96
K 14	1 MILE N. OF LYONS	RICE	1,342	1,309	1,413	5.3	7.9	160	4- 5 pm	FRI	7	1,803	FRI	7	1,413	1,537	.92
K 42	3 MILES N.E. OF VIOLA	SEDGWICK	4,626	4,447	4,516	- 2.4	1.6	512	4- 5 pm	FRI	14	5,448	FRI	14	4,516	4,908	.92
US 281	0.5 MILES S. OF ST. JOHN	STAFFORD	2,377	2,405	2,433	2.4	1.2	269	5- 6 pm	TUE	25	3,130	WED	26	2,433	2,659	.92
US 81	4.1 MILES S. OF WELLINGTON	SUMNER	1,744	1,588	1,678	- 3.8	5.7	197	5- 6 pm	WED	5	1,982	FRI	7	1,678	1,785	.94

- 2.3 - 1.1

Percent of Change for District 5 Stations

Rural State Highways for District 6

US 83	8.2 MILES S. OF GARDEN CITY	FINNEY	4,101	4,059	4,429	8.0	9.1	439	5- 6 pm	TUE	25	5,199	TUE	25	4,429	4,605	.96
US 50	4.5 MILES W. OF DODGE CITY	FORD	6,313	5,492	5,509	- 12.7	0.3	584	5- 6 pm	FRI	14	6,658	WED	26	5,509	5,816	.95
US 400	4.5 MILES W. OF DODGE CITY	FORD	1,146	1,091	1,016	- 11.3	- 6.9	128	6- 7 pm	FRI	14	1,339	FRI	14	1,016	1,117	.91
K 25	2.5 MILES N. OF ULYSSES	GRANT	1,542	1,591	1,478	- 4.2	- 7.1	166	5- 6 pm	WED	5	1,788	TUE	4	1,478	1,628	.91
K 27	15 MILES N OF TRIBUNE	GREELEY	654	680	726	11.0	6.8	97	12- 1 pm	THU	6	1,049	THU	6	726	803	.90
US 50	0.8 MILES E. OF KAN-COLO ST. LINE	HAMILTON	1,426	1,328	1,378	- 3.4	3.8	195	2- 3 pm	SUN	30	2,051	WED	26	1,378	1,377	1.00
US 283	8.3 MILES N. OF JETMORE	HODGEMAN	964	880	891	- 7.6	1.3	110	4- 5 pm	FRI	14	1,213	TUE	25	891	989	.90
US 54	3.7 MILES W. OF MEADE	MEADE	3,782	3,632	3,824	1.1	5.3	389	12- 1 pm	SUN	30	4,792	WED	26	3,824	3,908	.98
K 96	12 MILES W. OF SCOTT CITY	WICHITA	1,218	1,200	1,200	- 1.5	0.0	145	4- 5 pm	WED	26	1,493	WED	26	1,200	1,306	.92

- 3.3 2.5

Percent of Change for District 6 Stations

Month of November, 2014

Sparse Matrix Model

Date: 18-DEC-2014

---- Average Daily Traffic ----
for the Month

Percent Change
Month

---- Maximum Hour ----
Volume Hour DOW Day

--- Maximum Day ---
Volume DOW Day

7 Day Avg
5 Day Avg
7 Day / 5 Day Avg

Route Description Location Description County

2012 2013 2014 2012 2013

Rural Secondary Stations

RS 61	6.5 MILES S.W. OF HIAWATHA	BROWN	216	247	258	19.4	4.5	40	4- 5 pm	THU	13	367	THU	13	258	280	.92
RS 463	2.5 MILES S.W. OF BELOIT	MITCHELL	251	247	275	9.6	11.3	48	1- 2 pm	THU	6	455	THU	6	275	305	.90
RS 272	2 MILES S. OF QUINTER	GOVE	362	309	374	3.3	21.0	77	4- 5 pm	FRI	14	607	FRI	14	374	392	.95
RS 13	0.5 MILES N. OF BUSH CITY	ANDERSON	308	446	350	13.6	- 21.5	49	1- 2 pm	FRI	14	437	FRI	14	350	376	.93
RS 2316	3 MILES E. OF PARSONS	LABETTE	1,778	1,726	1,720	- 3.3	- 0.3	205	3- 4 pm	FRI	7	2,164	FRI	7	1,720	1,868	.92
RS 303	0.8 MI. S. OF US-54 & K17 JCT. (MIDWAY)	KINGMAN	313	303	343	9.6	13.2	90	5- 6 pm	TUE	4	641	TUE	4	343	364	.94
RS 251	6 MILES W. OF FORD	FORD	471	445	470	- 0.2	5.6	61	5- 6 pm	FRI	7	627	FRI	7	470	498	.94

Percent of Change for Rural Secondary Stations

2.5 1.8

Reservoir Stations

K 237	1.5 MILES N. OF JCT. US 24	JEFFERSON	984	966	966	- 1.8	0.0	121	5- 6 pm	WED	5	1,152	FRI	7	966	1,001	.97
LOCAL ROAD	KANOPOLIS RESERVOIR N. OF DAM	ELLSWORTH	118	78	41	- 65.3	- 47.4					150	SAT	1	41	34	1.21
LOCAL ROAD	KANOPOLIS RESERVOIR S. OF DAM	ELLSWORTH	120	56	75	- 37.5	33.9					190	SAT	1	75	63	1.19
LOCAL ROAD	CEDAR BLUFF RESERVOIR N. OF DAM	TREGO	43	60	24	- 44.2	- 60.0					101	SUN	30	24	15	1.60

Percent of Change for Reservoir Stations

- 12.6 - 4.7

Kansas City Stations

US-69	0.4 MILES S. OF 135TH ST.	JOHNSON	49,222	50,763	49,914	1.4	- 1.7	5,509	5- 6 pm	TUE	25	59,717	FRI	7	49,914	53,714	.93
135TH	135TH E. OF MUR-LEN	JOHNSON	33,793	35,443	33,664	- 0.4	- 5.0	3,373	5- 6 pm	TUE	11	40,166	FRI	14	33,664	35,595	.95
BLACKBOB	BLACKBOB RD. S. OF 139TH	JOHNSON	20,828	20,161	21,277	2.2	5.5	2,298	4- 5 pm	FRI	14	24,479	FRI	14	21,277	21,733	.98
I 435	0.8 MILES S. OF I - 70	WYANDOTTE	59,003	62,723	64,572	9.4	2.9	8,017	5- 6 pm	TUE	25	78,843	FRI	7	64,572	69,694	.93

Percent of Change for Kansas City Stations

4.0 .2

Salina Stations

OHIO ST.	OHIO ST. N. OF WESTCHESTER DR.	SALINE	16,603	16,471	16,558	- 0.3	0.5	1,757	4- 5 pm	THU	6	20,360	FRI	14	16,558	18,307	.90
----------	--------------------------------	--------	--------	--------	--------	-------	-----	-------	---------	-----	---	--------	-----	----	--------	--------	-----

Percent of Change for Salina Stations

- .3 .5

Topeka Stations

45TH ST.	45TH ST. E. OF INDIANA	SHAWNEE	7,389	3,062													
N. TOPEKA	TOPEKA BLVD. NORTH OF PARAMORE ST.	SHAWNEE	15,542	16,078	16,671	7.3	3.7	1,907	4- 5 pm	FRI	14	21,068	FRI	7	16,671	18,347	.91
I 70	I 70 E. OF MACVICAR ST.	SHAWNEE	43,541	44,654	40,551	- 6.9	- 9.2	4,571	4- 5 pm	FRI	14	52,993	WED	26	40,551	43,046	.94
I 470	I 470 N.W. OF HUNTOON	SHAWNEE	31,635	32,751	32,589	3.0	- 0.5	3,857	5- 6 pm	FRI	7	40,008	FRI	7	32,589	34,861	.93
US 40	US 40 E. OF TECUMSEH RD.	SHAWNEE	4,556	4,396	4,070	- 10.7	- 7.4	569	7- 8 am	WED	19	5,115	FRI	21	4,070	4,549	.89
US 75	US 75 N. OF S.W. 57TH	SHAWNEE	15,395	13,951	13,658	- 11.3	- 2.1	1,700	7- 8 am	THU	6	16,857	FRI	14	13,658	14,968	.91
K 4	1MI. S. OF JCT. US-24	SHAWNEE	8,323	8,202	8,278	- 0.5	0.9	1,077	7- 8 am	WED	5	10,227	FRI	7	8,278	9,118	.91

Percent of Change for Topeka Stations

- 2.7 - 3.5

Month of November, 2014

Sparse Matrix Model

Date: 18-DEC-2014

---- Average Daily Traffic ----			Percent Change		---- Maximum Hour ----				--- Maximum Day ---			7 Day	5 Day	7 Day /	
for the Month			Month		Volume	Hour	DOW	Day	Volume	DOW	Day	Avg	Avg	5 Day	Avg
2012	2013	2014	2012	2013											

Route Description	Location Description	County
-------------------	----------------------	--------

Wichita Stations

K 96	K-96 E. OF GREENWICH RD.	SEDGWICK	22,667	22,958	21,454	- 5.4	- 6.6	2,568	5- 6 pm	TUE	25	25,788	FRI	14	21,454	23,386	.92
US 54	KELLOGG E. OF WEST ST.	SEDGWICK	88,834	88,922	88,784	- 0.1	- 0.2	9,186	4- 5 pm	FRI	14	109,571	FRI	14	88,784	97,452	.91
13TH ST.	13TH ST W. OF PINECREST	SEDGWICK	12,573	12,005	13,190	4.9	9.9	1,575	5- 6 pm	WED	5	16,179	FRI	14	13,190	14,348	.92
ROCK RD.	ROCK RD. S. OF CENTRAL AVE	SEDGWICK	32,279	32,401	31,886	- 1.2	- 1.6	3,335	5- 6 pm	MON	10	41,956	FRI	28	31,886	33,219	.96
21ST ST.	21ST ST E. OF WASHINGTON	SEDGWICK	12,742	10,981	12,013	- 5.7	9.4	1,408	4- 5 pm	FRI	14	14,815	FRI	14	12,013	12,945	.93
HILLSIDE ST.	HILLSIDE S. OF 15TH ST	SEDGWICK	10,844	9,990	10,906	0.6	9.2	1,193	5- 6 pm	TUE	25	14,090	FRI	14	10,906	12,156	.90
I 235	I 235 S. OF MAPLE ST	SEDGWICK	46,367	44,738	43,879	- 5.4	- 1.9	5,062	5- 6 pm	MON	24	53,529	WED	26	43,879	48,124	.91
I 135	I-135 N. OF 21ST ST.	SEDGWICK	67,058	64,932	66,986	- 0.1	3.2	7,491	7- 8 am	THU	6	81,648	FRI	7	66,986	76,277	.88

Percent of Change for Wichita Stations

- 1.5 .8

NOTE: * Excluded from Percent Change Totals