

**KANSAS DEPARTMENT OF TRANSPORTATION
BUREAU OF TRANSPORTATION PLANNING**

MAY 2015

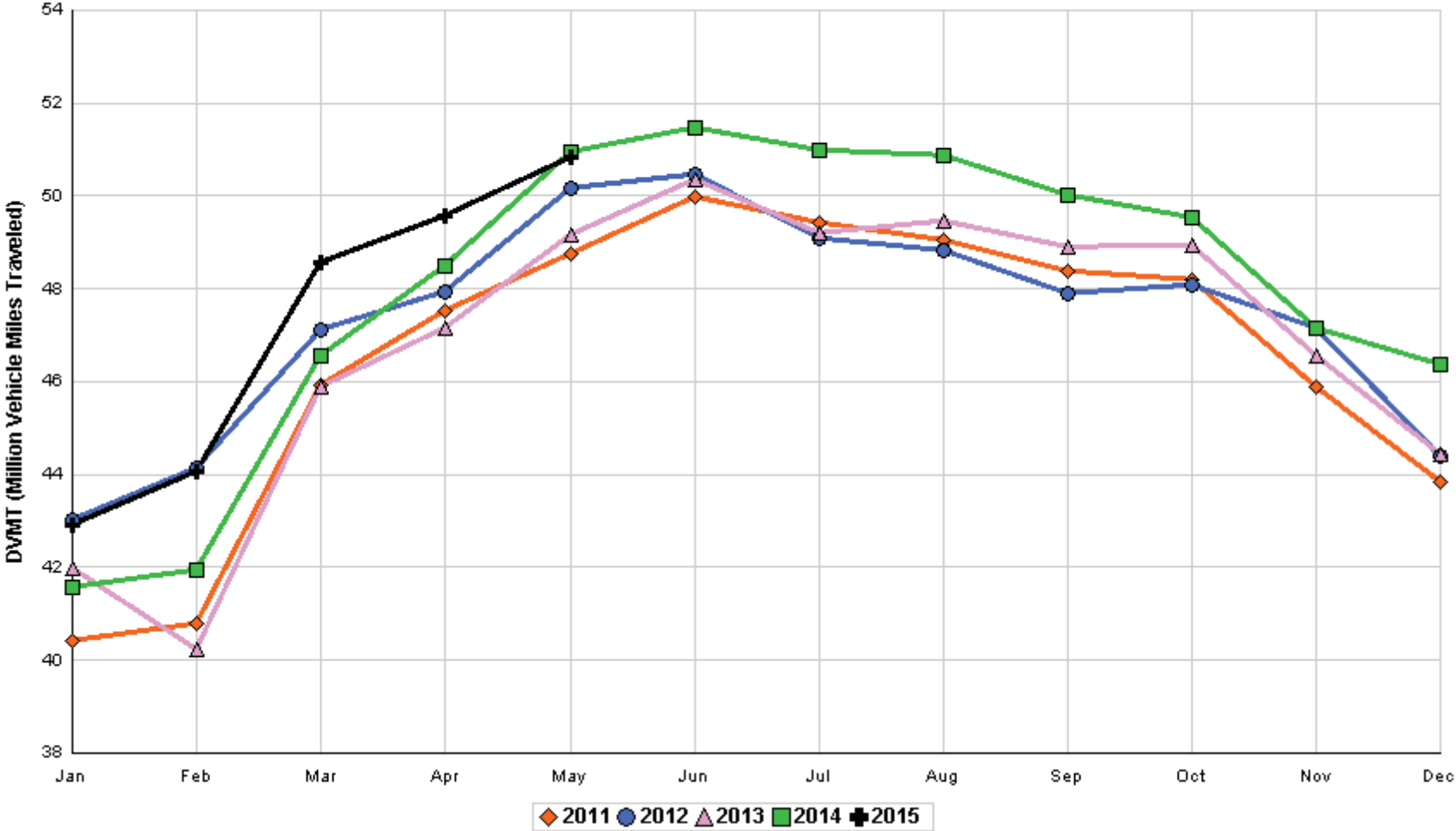
SIGNIFICANT FACTS AND TRENDS



Travel on the Kansas State Highway System				
	Daily Vehicle Miles		% Change	
	(In Millions)		2014 to 2015	
Month	2014	2015	Month	Year
Jan	41.564	42.897	3.2	3.2
Feb	41.934	44.065	5.1	4.1
Mar	46.549	48.584	4.4	4.2
Apr	48.507	49.564	2.2	3.7
May	50.940	50.833	- 0.2	2.8
Jun	51.486			
Jul	50.972			
Aug	50.866			
Sep	50.006			
Oct	49.524			
Nov	47.167			
Dec	46.376			
Average	47.991			

**Contact the Traffic and Field Operations Unit with questions or requests at:
(785)-296-3841 or E-mail: TrafficCounts@ksdot.org
The Monthly Average Daily Traffic (MADT) is Calculated Utilizing the
Day-Of-Week (DOW) Method. Missing Traffic Count Data will Not be Estimated
Therefore Station Summary Data will be Blank where Data is Not Available.**

Total Travel on Kansas State Highway System 2011 - 2015



Month of May, 2015

Sparse Matrix Model

Date: 15-JUN-2015

---- Average Daily Traffic ----
for the Month

Percent Change
Month

---- Maximum Hour ----
Volume Hour DOW Day

--- Maximum Day ---
Volume DOW Day

7 Day Avg 5 Day Avg 7 Day / 5 Day Avg

Route Description	Location Description	County	2013	2014	2015	2013	2014	Volume	Hour	DOW	Day	Volume	DOW	Day	7 Day Avg	5 Day Avg	7 Day / 5 Day Avg
-------------------	----------------------	--------	------	------	------	------	------	--------	------	-----	-----	--------	-----	-----	-----------	-----------	-------------------

Rural State Highways for District 1

US-75	1.2 MILES N. OF US-36 I.C.	BROWN	3,973	4,377	4,524	13.9	3.4	506	5- 6 pm	FRI	22	6,501	FRI	22	4,524	4,670	.97
US 24	1.5 MILES N.E. OF LAWRENCE	DOUGLAS	6,953	7,260	7,233	4.0	- 0.4	1,010	3- 4 pm	THU	21	10,131	THU	21	7,233	7,492	.97
US 56	4 MILES E. OF OVERBROOK	DOUGLAS	1,839	2,154	2,088	13.5	- 3.1	234	4- 5 pm	FRI	8	2,553	FRI	22	2,088	2,076	1.01
US 75	5.8 MILES N. OF HOLTON	JACKSON	6,149	6,325	6,597	7.3	4.3	706	5- 6 pm	FRI	22	8,986	FRI	22	6,597	6,629	1.00
K 10	0.2 MILES E. OF RS. 346 INTCHG.	JOHNSON	32,295	32,677	31,830	- 1.4	- 2.6	3,908	5- 6 pm	FRI	15	41,915	FRI	15	31,830	33,379	.95
K 99	2.9 MILES S. OF EMPORIA	LYON	4,110	4,086	4,051	- 1.4	- 0.9	467	7- 8 am	MON	18	5,341	FRI	1	4,051	4,165	.97
US 36	13 MILES E. OF MARYSVILLE	MARSHALL	2,557	2,597	2,500	- 2.2	- 3.7	300	3- 4 pm	FRI	22	3,483	FRI	22	2,500	2,598	.96
K 68	0.15 MILES E. OF JCT K 268	OSAGE	2,956	2,906	2,887	- 2.3	- 0.7	353	4- 5 pm	FRI	1	3,747	FRI	22	2,887	2,859	1.01
K 268	0.1 MILES E. OF US 75	OSAGE			2,986			322	4- 5 pm	FRI	22	3,940	FRI	22	2,986	3,016	.99
K 18	0.7 MILES N.E. OF OGDEN	RILEY		23,490	24,296		3.4	2,949	4- 5 pm	FRI	15	32,813	FRI	15	24,296	25,944	.94
US 24	4 MILES N. OF MANHATTAN	RILEY	7,695	8,021	8,234	7.0	2.7	927	5- 6 pm	FRI	8	10,031	FRI	15	8,234	8,081	1.02
US 24	1 MILE N.W. OF ROSSVILLE	SHAWNEE	4,344	4,771	4,370	0.6	- 8.4	489	4- 5 pm	FRI	1	5,418	FRI	22	4,370	4,660	.94
I 70	4.7 MILES E. OF K 30 INTCHG. (MAPLE HILL)	WABAUNSEE	21,125	21,971	21,577	2.1	- 1.8	2,377	5- 6 pm	FRI	1	26,454	FRI	1	21,577	20,658	1.04

Percent of Change for District 1 Stations

2.0 - .4

Rural State Highways for District 2

K 9	5.8 MILES E. OF CLIFTON	CLAY	342	333	365	6.7	9.6	46	7- 8 am	TUE	5	459	TUE	5	365	394	.93
K 15	3.3 MILES N. OF CLAY CENTER	CLAY	1,917	1,982	1,987	3.7	0.3	220	5- 6 pm	FRI	22	2,654	FRI	22	1,987	2,123	.94
I 70	W. OF K-232 INTCHG. (WILSON)	ELLSWORTH	11,337	11,917	12,814	13.0	7.5	1,583	3- 4 pm	MON	25	18,403	FRI	22	12,814	12,684	1.01
K 141	2.8 MILES S. OF KANOPOLIS DAM	ELLSWORTH	627	754	657	4.8	- 12.9	158	3- 4 pm	MON	25	1,243	MON	25	657	591	1.11
K 18	1.8 MILES W. OF JUNCTION CITY	GEARY	1,358	1,411	1,343	- 1.1	- 4.8	210	7- 8 am	TUE	12	1,673	FRI	15	1,343	1,449	.93
I 70	4.5 MILES S.W. OF JUNCTION CITY	GEARY	16,521	17,576	18,714	13.3	6.5	2,131	4- 5 pm	SUN	17	24,289	FRI	22	18,714	18,623	1.00
US 77	4 MILES S. OF JUNCTION CITY	GEARY	4,072	4,204	4,026	- 1.1	- 4.2	519	4- 5 pm	FRI	15	5,359	FRI	15	4,026	4,058	.99
US 36	1 MILE E. OF MANKATO	JEWELL	2,039	2,031	1,995	- 2.2	- 1.8	239	4- 5 pm	FRI	8	2,580	FRI	8	1,995	2,118	.94
K 18	0.5 MILES W. OF LINCOLN	LINCOLN	983	1,073	906	- 7.8	- 15.6	106	3- 4 pm	MON	11	1,129	FRI	8	906	971	.93
I 135	0.5 MILES N. OF US 56 INTCHG. (MCPHERSON)	MCPHERSON	13,485	13,925	13,775	2.2	- 1.1	1,386	4- 5 pm	FRI	1	17,216	FRI	15	13,775	13,547	1.02
K 14	3 MILES S. OF BELOIT	MITCHELL	916	908	862	- 5.9	- 5.1	113	2- 3 pm	FRI	22	1,150	FRI	22	862	951	.91
US 81	2.5 MILES S. OF BELLEVILLE	REPUBLIC	5,120	5,187	5,338	4.3	2.9	600	3- 4 pm	FRI	22	7,236	FRI	22	5,338	5,474	.98

Percent of Change for District 2 Stations

6.9 2.4

Rural State Highways for District 3

US 83	6.2 MILES S. OF OAKLEY	LOGAN	1,847	2,016	2,004	8.5	- 0.6	200	11-12 pm	WED	13	2,471	THU	21	2,004	2,198	.91
US 36	9.5 MILES W. OF NORTON	NORTON	1,077	1,222	1,009	- 6.3	- 17.4	112	1- 2 pm	MON	25	1,239	FRI	22	1,009	1,064	.95
US 183	1.2 MILES S. OF PHILLIPSBURG	PHILLIPS	2,525	2,541	2,533	0.3	- 0.3	288	12- 1 pm	TUE	12	3,119	THU	21	2,533	2,673	.95
K 23	14.5 MILES S. OF HOXIE	SHERIDAN	900	694	893	- 0.8	28.7	110	9-10 am	FRI	1	1,138	FRI	22	893	975	.92
I 70	2.2 MI. E OF KANORADO EXIT	SHERMAN	7,975	9,325	10,253	28.6	10.0	1,367	1- 2 pm	MON	25	15,754	FRI	22	10,253	10,318	.99
US 24	7.3 MILES E. OF COLBY	THOMAS	1,975	2,114	2,000	1.3	- 5.4	235	5- 6 pm	FRI	15	2,738	FRI	15	2,000	2,097	.95
K 25	1.8 MILES S. OF COLBY	THOMAS	819	716	829	1.2	15.8	149	4- 5 pm	SAT	30	1,197	THU	14	829	908	.91
I 70	1 MILE W. OF WAKEENEY	TREGO	10,025	10,508	11,480	14.5	9.3	1,498	2- 3 pm	MON	25	16,959	FRI	22	11,480	11,620	.99
US 40	1.4 MILES E. OF KAN-COLO ST. LINE	WALLACE	525	576	568	8.2	- 1.4	76	4- 5 pm	SUN	17	715	FRI	29	568	586	.97

Percent of Change for District 3 Stations

14.1 6.3

Month of May, 2015

Sparse Matrix Model

Date: 15-JUN-2015

Route Description	Location Description	County	Average Daily Traffic for the Month			Percent Change Month		Maximum Hour				Maximum Day			7 Day Avg	5 Day Avg	7 Day / 5 Day Avg
			2013	2014	2015	2013	2014	Volume	Hour	DOW	Day	Volume	DOW	Day			

US 54	3 MILES W. OF IOLA	ALLEN	2,925	2,954	2,142	-26.8	-27.5	623	4-5 am	FRI	29	2,941	FRI	29	2,142	2,261	.95
US 169	1 MILE N. OF GREELEY	ANDERSON	3,311	3,239	3,348	1.1	3.4	372	4-5 pm	FRI	22	4,374	FRI	22	3,348	3,448	.97
US 69	2 MILES N. OF FT SCOTT	BOURBON		6,680	6,898		3.3	813	4-5 pm	FRI	8	9,145	FRI	8	6,898	7,001	.99
US 166	0.5 MILES W. OF NIOTAZE	CHAUTAUQUA	2,532	2,687	2,587	2.2	-3.7	315	4-5 pm	FRI	22	3,643	FRI	22	2,587	2,657	.97
I 35	2 MILES W. OF K- 131 INTCHG. N. OF LEBO	COFFEY	14,007	14,279	14,367	2.6	0.6	1,588	3-4 pm	FRI	22	19,282	FRI	22	14,367	14,031	1.02
US 59	4.3 MILES S. OF OTTAWA	FRANKLIN	6,025	6,641	6,380	5.9	-3.9	684	4-5 pm	FRI	1	7,887	FRI	15	6,380	6,550	.97
I 35	.5 MILES N.E. OF THE WELLSVILLE INTCHG.	FRANKLIN	21,131		21,754		2.9	2,301	4-5 pm	FRI	22	28,229	FRI	22	21,754	22,033	.99
US 400	3 MILES E. OF PARSONS	LABETTE	3,952	4,019	4,088	3.4	1.7	514	3-4 pm	FRI	22	6,108	FRI	22	4,088	4,220	.97
US 59	4 MILES S. OF ERIE	NEOSHO	2,630	3,084	3,260	24.0	5.7	357	3-4 pm	FRI	15	4,092	FRI	1	3,260	3,558	.92
US 169	1 MILE N. OF THAYER	NEOSHO	4,250	4,332	4,231	-0.4	-2.3	491	4-5 pm	FRI	22	5,741	FRI	22	4,231	4,437	.95
US 75	1 MILE N. OF YATES CENTER	WOODSON	2,778	2,881	2,784	0.2	-3.4	337	2-3 pm	FRI	22	4,029	FRI	22	2,784	2,824	.99
K 105	2 MILES N. OF TORONTO	WOODSON	706	620	609	-13.7	-1.8	105	1-2 pm	SAT	23	801	SAT	23	609	589	1.03

Rural State Highways for District 4

2.0 - 1.4

Percent of Change for District 4 Stations

Rural State Highways for District 5

US 56	5.5 MILES E. OF GREAT BEND	BARTON	5,361	5,495	4,168	-22.3	-24.1	508	5-6 pm	WED	27	5,535	FRI	29	4,168	4,191	.99
US 77	2 MILES N. OF EL DORADO	BUTLER	2,787	2,950				326									
US 400	1.5 MILES E. OF LEON	BUTLER	4,216	5,198	5,098	20.9	-1.9	535	5-6 pm	FRI	1	6,372	FRI	1	5,098	5,076	1.00
US 77	3.7 MILES N. OF ARKANSAS CITY	COWLEY	10,802	11,024	10,894	0.9	-1.2	1,177	3-4 pm	FRI	1	12,849	FRI	1	10,894	11,818	.92
US 160	6.2 MILES E. OF ATTICA	HARPER	1,705	1,516	1,439	-15.6	-5.1	165	5-6 pm	TUE	26	1,679	FRI	8	1,439	1,500	.96
US 50	3 MILES N.E. OF NEWTON	HARVEY	6,504	6,588	5,882	-9.6	-10.7	655	5-6 pm	FRI	15	7,250	FRI	15	5,882	5,910	1.00
US 54	14 MILES W. OF KINGMAN	KINGMAN		5,286	5,283		-0.1	652	4-5 pm	FRI	8	6,872	FRI	22	5,283	5,386	.98
US 54	1.5 MILES W. OF HAVILAND	KIOWA	5,602	5,492	5,411	-3.4	-1.5	558	1-2 pm	FRI	22	7,237	FRI	22	5,411	5,538	.98
US 183	7 MILES S. OF GREENSBURG	KIOWA	1,072	1,046	996	-7.1	-4.8	115	5-6 pm	TUE	26	1,320	THU	21	996	1,079	.92
US 56	5 MILES S.W. OF LARNED	PAWNEE	2,246	2,375	2,316	3.1	-2.5	249	4-5 pm	FRI	15	2,893	FRI	22	2,316	2,419	.96
K 61	5 MILES S.W. OF ARLINGTON	RENO	2,235	2,124	2,034	-9.0	-4.2	230	5-6 pm	FRI	1	2,515	FRI	1	2,034	2,092	.97
K 14	1 MILE N. OF LYONS	RICE	1,429	1,547	1,555	8.8	0.5	170	1-2 pm	FRI	22	1,917	THU	21	1,555	1,650	.94
K 42	3 MILES N.E. OF VIOLA	SEDGWICK	4,716	4,693	4,524	-4.1	-3.6	473	5-6 pm	WED	27	5,356	FRI	1	4,524	4,854	.93
US 281	0.5 MILES S. OF ST. JOHN	STAFFORD	2,623	2,735	2,661	1.4	-2.7	301	5-6 pm	FRI	15	3,299	FRI	15	2,661	2,883	.92
US 81	4.1 MILES S. OF WELLINGTON	SUMNER	1,763	1,725	1,739	-1.4	0.8	203	5-6 pm	TUE	12	2,096	FRI	1	1,739	1,854	.94

- 3.1 - 5.0

Percent of Change for District 5 Stations

Rural State Highways for District 6

US 83	8.2 MILES S. OF GARDEN CITY	FINNEY	4,351	4,596	4,522	3.9	-1.6	435	4-5 pm	THU	7	5,524	FRI	15	4,522	4,782	.95
US 50	4.5 MILES W. OF DODGE CITY	FORD	6,633	6,111	5,985	-9.8	-2.1	610	3-4 pm	FRI	22	7,759	FRI	22	5,985	6,283	.95
US 400	4.5 MILES W. OF DODGE CITY	FORD	1,171	1,162	1,168	-0.3	0.5	124	5-6 pm	WED	20	1,463	FRI	22	1,168	1,284	.91
K 25	2.5 MILES N. OF ULYSSES	GRANT	1,956	1,762	1,689	-13.7	-4.1	197	5-6 pm	TUE	12	2,072	THU	7	1,689	1,863	.91
K 27	15 MILES N OF TRIBUNE	GREELEY	743	764	804	8.2	5.2	92	10-11 am	FRI	8	1,053	THU	14	804	901	.89
US 50	0.8 MILES E. OF KAN-COLO ST. LINE	HAMILTON	1,675	1,674	1,669	-0.4	-0.3	206	2-3 pm	FRI	22	2,417	FRI	22	1,669	1,696	.98
US 283	8.3 MILES N. OF JETMORE	HODGEMAN	1,003	1,006	908	-9.5	-9.7	99	4-5 pm	WED	27	1,181	FRI	22	908	978	.93
US 54	3.7 MILES W. OF MEADE	MEADE	3,893	3,985	4,063	4.4	2.0	359	2-3 pm	FRI	22	5,055	FRI	22	4,063	4,165	.98
K 96	12 MILES W. OF SCOTT CITY	WICHITA	1,326	1,377	1,301	-1.9	-5.5	149	4-5 pm	FRI	1	1,608	FRI	15	1,301	1,408	.92

- 2.8 - 1.5

Percent of Change for District 6 Stations

Month of May, 2015

Sparse Matrix Model

Date: 15-JUN-2015

---- Average Daily Traffic ----
for the Month

Percent Change
Month

---- Maximum Hour ----
Volume Hour DOW Day

--- Maximum Day ---
Volume DOW Day

7 Day Avg
5 Day Avg
7 Day / 5 Day Avg

Route Description Location Description County

2013 2014 2015 2013 2014

Rural Secondary Stations

RS 61	6.5 MILES S.W. OF HIAWATHA	BROWN	221	273	276	24.9	1.1	40	4- 5 pm	SAT	23	342	MON	18	276	291	.95
RS 463	2.5 MILES S.W. OF BELOIT	MITCHELL	293	301	260	- 11.3	- 13.6	34	3- 4 pm	TUE	12	333	TUE	26	260	285	.91
RS 272	2 MILES S. OF QUINTER	GOVE	360	374	333	- 7.5	- 11.0	45	5- 6 pm	WED	20	423	FRI	1	333	353	.94
RS 13	0.5 MILES N. OF BUSH CITY	ANDERSON	453	510	322	- 28.9	- 36.9	43	4- 5 pm	WED	13	390	TUE	26	322	340	.95
RS 2316	3 MILES E. OF PARSONS	LABETTE	1,828	1,744	1,834	0.3	5.2	232	5- 6 pm	TUE	19	2,235	FRI	22	1,834	1,967	.93
RS 303	0.8 MI. S. OF US-54 & K14 JCT. (MIDWAY)	KINGMAN	308	326	292	- 5.2	- 10.4	52	9-10 am	SUN	17	411	THU	14	292	306	.95
RS 251	6 MILES W. OF FORD	FORD	535	540	495	- 7.5	- 8.3	63	5- 6 pm	THU	28	647	FRI	15	495	507	.98

Percent of Change for Rural Secondary Stations

- 4.7 - 6.3

Reservoir Stations

K 237	1.5 MILES N. OF JCT. US 24	JEFFERSON	1,383	1,560	1,406	1.7	- 9.9	193	2- 3 pm	MON	25	1,928	SAT	2	1,406	1,348	1.04
LOCAL ROAD	KANOPOLIS RESERVOIR N. OF DAM	ELLSWORTH	284	294	141	- 50.4	- 52.0					412	SUN	24	141	98	1.44
LOCAL ROAD	KANOPOLIS RESERVOIR S. OF DAM	ELLSWORTH	433	553	526	21.5	- 4.9					1,649	SUN	24	526	385	1.37
LOCAL ROAD	CEDAR BLUFF RESERVOIR N. OF DAM	TREGO	244	398	258	5.7	- 35.2					889	SUN	24	258	186	1.39

Percent of Change for Reservoir Stations

- .6 - 16.9

Kansas City Stations

US-69	0.4 MILES S. OF 135TH ST.	JOHNSON	51,890	54,371	55,484	6.9	2.0	5,787	5- 6 pm	MON	11	64,387	FRI	8	55,484	59,071	.94
135TH	135TH E. OF MUR-LEN	JOHNSON	35,857	34,782	34,529	- 3.7	- 0.7	3,504	5- 6 pm	THU	21	40,176	FRI	1	34,529	36,102	.96
BLACKBOB	BLACKBOB RD. S. OF 139TH	JOHNSON	22,854	24,001	25,710	12.5	7.1	4,540	5- 6 pm	WED	6	46,244	WED	6	25,710	26,689	.96
I 435	0.8 MILES S. OF I - 70	WYANDOTTE	64,593	70,186	71,585	10.8	2.0	8,514	5- 6 pm	WED	20	87,487	FRI	8	71,585	75,729	.95

Percent of Change for Kansas City Stations

6.9 2.2

Salina Stations

OHIO ST.	OHIO ST. N. OF WESTCHESTER DR.	SALINE	18,024	18,339	17,756	- 1.5	- 3.2	1,739	4- 5 pm	FRI	15	21,698	FRI	1	17,756	19,386	.92
----------	--------------------------------	--------	--------	--------	--------	-------	-------	-------	---------	-----	----	--------	-----	---	--------	--------	-----

Percent of Change for Salina Stations

- 1.5 - 3.2

Topeka Stations

45TH ST.	45TH ST. E. OF INDIANA	SHAWNEE	3,875		6,582	69.9		730	5- 6 pm	WED	27	7,562	FRI	1	6,582	6,820	.97
N. TOPEKA	TOPEKA BLVD. NORTH OF PARAMORE ST.	SHAWNEE	17,758	17,697	17,610	- 0.8	- 0.5	1,787	4- 5 pm	FRI	1	22,619	FRI	1	17,610	19,239	.92
I 70	I 70 E. OF MACVICAR ST.	SHAWNEE	46,958	47,644	48,348	3.0	1.5	5,339	4- 5 pm	FRI	15	60,578	FRI	15	48,348	51,477	.94
I 470	I 470 N.W. OF HUNTOON	SHAWNEE		34,552	34,559		0.0	3,828	4- 5 pm	FRI	1	42,883	FRI	22	34,559	37,002	.93
US 40	US 40 E. OF TECUMSEH RD.	SHAWNEE	4,917	4,767	4,656	- 5.3	- 2.3	655	5- 6 pm	WED	27	5,759	WED	27	4,656	5,041	.92
US 75	US 75 N. OF S.W. 57TH	SHAWNEE	14,556	14,897	14,905	2.4	0.1	1,689	4- 5 pm	FRI	22	19,503	FRI	22	14,905	16,179	.92
K 4	1MI. S. OF JCT. US-24	SHAWNEE	9,156	9,348	8,925	- 2.5	- 4.5	1,058	7- 8 am	THU	7	10,855	FRI	1	8,925	9,586	.93

Percent of Change for Topeka Stations

3.9 .1

Month of May, 2015

Sparse Matrix Model

Date: 15-JUN-2015

---- Average Daily Traffic ----			Percent Change		---- Maximum Hour ----				--- Maximum Day ---			7 Day	5 Day	7 Day /	
for the Month			Month		Volume	Hour	DOW	Day	Volume	DOW	Day	Avg	Avg	5 Day	
2013	2014	2015	2013	2014											

Route Description	Location Description	County
-------------------	----------------------	--------

Wichita Stations

K 96	K-96 E. OF GREENWICH RD.	SEDGWICK	24,108	23,820	25,262	4.8	6.1	3,017	5- 6 pm	WED	6	30,167	FRI	15	25,262	27,427	.92
US 54	KELLOGG E. OF WEST ST.	SEDGWICK	91,153	90,962	93,391	2.5	2.7	9,253	4- 5 pm	THU	21	115,672	FRI	29	93,391	101,963	.92
13TH ST.	13TH ST W. OF PINECREST	SEDGWICK	11,171	14,233	14,478	29.6	1.7	1,608	5- 6 pm	FRI	15	17,591	FRI	1	14,478	15,691	.92
ROCK RD.	ROCK RD. S. OF CENTRAL AVE	SEDGWICK	32,028	32,165	32,946	2.9	2.4	3,070	12- 1 pm	SAT	9	39,099	FRI	15	32,946	34,377	.96
21ST ST.	21ST ST E. OF WASHINGTON	SEDGWICK	13,398	12,845	12,574	- 6.2	- 2.1	1,635	3- 4 pm	THU	21	14,740	MON	11	12,574	13,344	.94
HILLSIDE ST.	HILLSIDE S. OF 15TH ST	SEDGWICK	10,667	11,567	11,762	10.3	1.7	1,395	6- 7 pm	TUE	12	15,192	TUE	12	11,762	12,866	.91
I 235	I 235 S. OF MAPLE ST	SEDGWICK	47,471	44,801	51,130	7.7	14.1	5,611	5- 6 pm	THU	28	60,944	FRI	15	51,130	55,585	.92
I 135	I-135 N. OF 21ST ST.	SEDGWICK	67,445	70,462	68,713	1.9	- 2.5	7,389	7- 8 am	WED	13	85,014	FRI	29	68,713	77,141	.89

Percent of Change for Wichita Stations

4.3 3.1

NOTE: * Excluded from Percent Change Totals