

**KANSAS DEPARTMENT OF TRANSPORTATION
BUREAU OF TRANSPORTATION PLANNING**

SEPTEMBER 2012

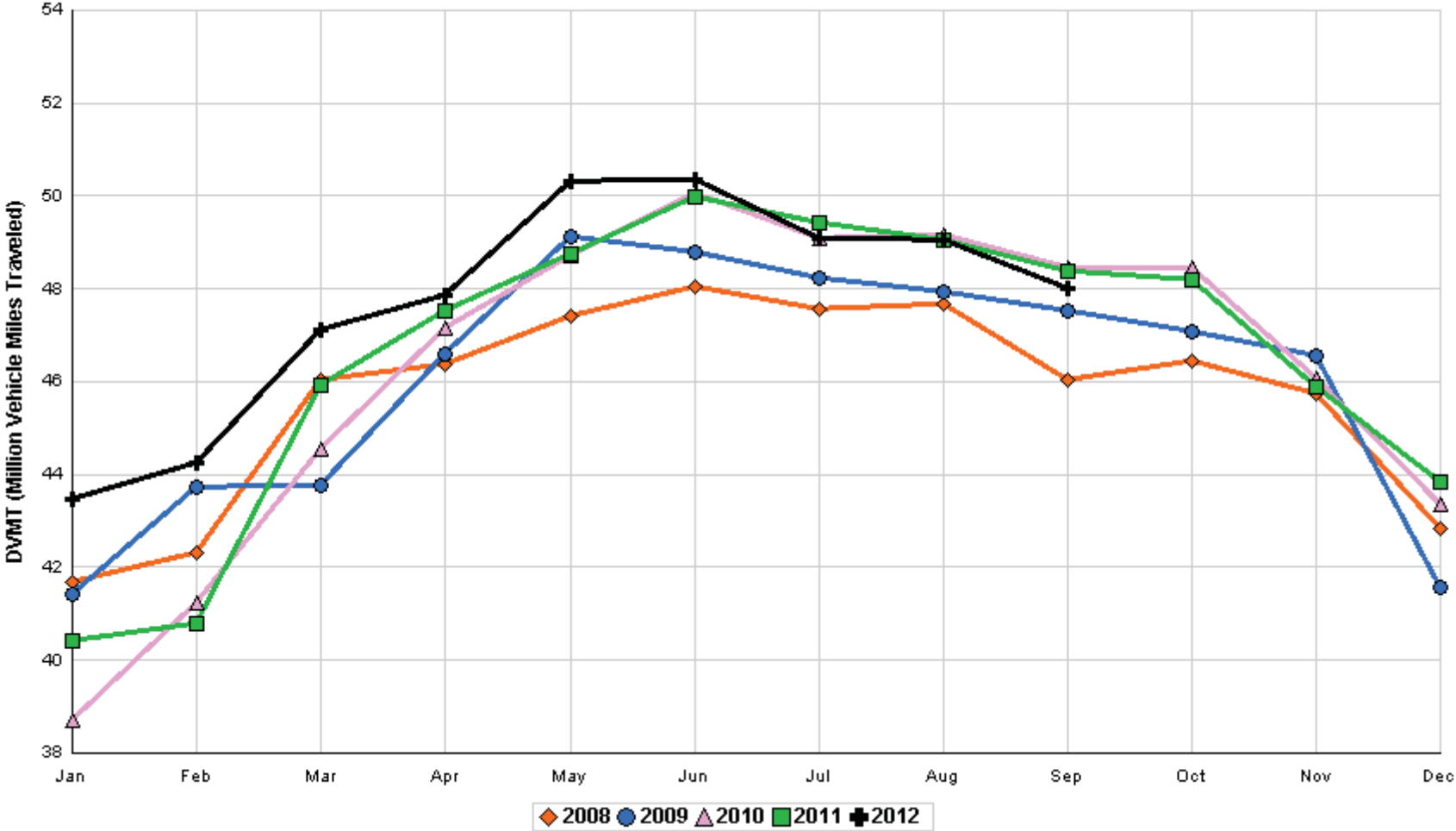
SIGNIFICANT FACTS AND TRENDS



Travel on the Kansas State Highway System				
	Daily Vehicle Miles		% Change	
	(In Millions)		2011 to 2012	
Month	2011	2012	Month	Year
Jan	40.412	43.456	7.5	7.5
Feb	40.793	44.246	8.5	8.0
Mar	45.930	47.106	2.6	6.0
Apr	47.510	47.844	0.7	4.6
May	48.745	50.308	3.2	4.3
Jun	49.964	50.354	0.8	3.6
Jul	49.431	49.087	- 0.7	3.0
Aug	49.047	49.053	0.0	2.6
Sep	48.398	48.008	- 0.8	2.2
Oct	48.198			
Nov	45.890			
Dec	43.834			
Average	46.513			

**Contact the Traffic and Field Operations Unit with questions or requests at:
(785)-296-3841 or E-mail: TrafficCounts@ksdot.org
The Monthly Average Daily Traffic (MADT) is Calculated Utilizing the
Day-Of-Week (DOW) Method. Missing Traffic Count Data will Not be Estimated
Therefore Station Summary Data will be Blank where Data is Not Available.**

Total Travel on Kansas State Highway System 2008 - 2012



Month of September, 2012

Sparse Matrix Model

Date: 23-OCT-2012

Route Description	Location Description	County	Average Daily Traffic for the Month			Percent Change Month		Maximum Hour				Maximum Day			7 Day Avg	5 Day Avg	7 Day / 5 Day Avg
			2010	2011	2012	2010	2011	Volume	Hour	DOW	Day	Volume	DOW	Day			
Rural State Highways for District 1																	
US-75	1.2 MILES N. OF US-36 I.C.	BROWN	4,058	5,943	3,751	- 7.6	- 36.9	406	5-6 PM	FRI	14	4,846	FRI	14	3,751	3,859	.97
US 24	1.5 MILES N.E. OF LAWRENCE	DOUGLAS	7,798	7,107	6,720	- 13.8	- 5.4	731	5-6 PM	FRI	21	7,779	SAT	22	6,720	6,819	.99
US 56	4 MILES E. OF OVERBROOK	DOUGLAS	2,073	2,040	2,082	0.4	2.1	243	10-11 AM	SAT	8	2,742	SAT	8	2,082	2,019	1.03
US 75	5.8 MILES N. OF HOLTON	JACKSON	6,503	6,757	5,835	- 10.3	- 13.6	689	5-6 PM	FRI	14	7,328	FRI	14	5,835	5,900	.99
K 10	0.2 MILES E. OF RS. 346 INTCHG.	JOHNSON	34,755	33,168	32,087	- 7.7	- 3.3	3,567	5-6 PM	FRI	28	37,918	SAT	8	32,087	33,121	.97
K 99	2.9 MILES S. OF EMPORIA	LYON	3,909	3,956	3,787	- 3.1	- 4.3	432	6-7 PM	FRI	28	4,846	FRI	21	3,787	4,018	.94
US 36	13 MILES E. OF MARYSVILLE	MARSHALL	2,748	3,213	2,511	- 8.6	- 21.8	291	4-5 PM	FRI	14	3,348	FRI	14	2,511	2,568	.98
K 68	0.15 MILES E. OF JCT K 268	OSAGE	2,971	2,883	2,698	- 9.2	- 6.4	350	6-7 PM	FRI	14	3,636	SAT	15	2,698	2,599	1.04
K 268	0.1 MILES E. OF US 75	OSAGE	3,156	3,012	2,835	- 10.2	- 5.9	326	5-6 PM	FRI	28	3,442	SAT	15	2,835	2,811	1.01
K 18	0.7 MILES N.E. OF OGDEN	RILEY	26,459														
US 24	4 MILES N. OF MANHATTAN	RILEY	7,429	7,438	7,166	- 3.5	- 3.7	898	2-3 PM	SAT	8	9,078	SAT	1	7,166	6,988	1.03
K 4	1MI. S. OF JCT. US-24	SHAWNEE	8,913	8,981	8,305	- 6.8	- 7.5	1,053	5-6 PM	FRI	21	10,695	FRI	21	8,305	8,733	.95
US 24	1 MILE N.W. OF ROSSVILLE	SHAWNEE	4,688	4,631	4,329	- 7.7	- 6.5	677	8-9 PM	FRI	7	5,708	FRI	7	4,329	4,494	.96
I 70	4.7 MILES E. OF K 30 INTCHG. (MAPLE HILL)	WABAUNSEE	21,700		20,913	- 3.6		2,473	8-9 AM	SAT	8	29,776	SAT	15	20,913	19,745	1.06

Percent of Change for District 1 Stations

- 6.9 - 7.9

Rural State Highways for District 2

K 9	5.8 MILES E. OF CLIFTON	CLAY	323	358	359	11.1	0.3	51	4-5 PM	TUE	18	474	SAT	1	359	391	.92
K 15	3.3 MILES N. OF CLAY CENTER	CLAY	2,044	1,997	1,883	- 7.9	- 5.7	221	5-6 PM	FRI	21	2,272	FRI	21	1,883	1,987	.95
I 70	W. OF K-232 INTCHG. (WILSON)	ELLSWORTH	10,799	10,764													
K 141	2.8 MILES S. OF KANOPOLIS DAM	ELLSWORTH	615		495	- 19.5		116	10-11 AM	MON	3	1,092	SUN	2	495	434	1.14
K 18	1.8 MILES W. OF JUNCTION CITY	GEARY	1,498	1,412	1,343	- 10.3	- 4.9	189	3-4 PM	FRI	28	1,612	FRI	21	1,343	1,442	.93
I 70	4.5 MILES S.W. OF JUNCTION CITY	GEARY	18,082	17,357	16,652	- 7.9	- 4.1	1,793	3-4 PM	MON	3	21,273	SAT	1	16,652	16,336	1.02
US 77	4 MILES S. OF JUNCTION CITY	GEARY	4,496	3,927	3,832	- 14.8	- 2.4	483	5-6 PM	FRI	28	4,867	FRI	21	3,832	3,886	.99
US 36	1 MILE E. OF MANKATO	JEWELL	2,033	1,978	1,872	- 7.9	- 5.4	219	6-7 PM	FRI	7	2,576	FRI	14	1,872	1,983	.94
K 18	0.5 MILES W. OF LINCOLN	LINCOLN	1,052	1,137	1,054	0.2	- 7.3	132	3-4 PM	FRI	14	1,353	FRI	7	1,054	1,102	.96
I 135	0.5 MILES N. OF US 56 INTCHG. (MCPHERSON)	MCPHERSON	12,179	13,327	12,736	4.6	- 4.4	1,330	5-6 PM	FRI	21	15,187	FRI	21	12,736	12,436	1.02
K 14	3 MILES S. OF BELOIT	MITCHELL	867	889	840	- 3.1	- 5.5	99	4-5 PM	FRI	28	1,043	FRI	28	840	907	.93
US 81	2.5 MILES S. OF BELLEVILLE	REPUBLIC	5,152		4,827	- 6.3		467	3-4 PM	FRI	14	5,847	FRI	14	4,827	4,923	.98

Percent of Change for District 2 Stations

- 5.1 - 4.3

Rural State Highways for District 3

US 83	6.2 MILES S. OF OAKLEY	LOGAN	1,928	2,098	1,930	0.1	- 8.0	197	9-10 AM	SAT	29	2,259	FRI	7	1,930	2,080	.93
US 36	9.5 MILES W. OF NORTON	NORTON	1,084	1,107	1,052	- 3.0	- 5.0	120	4-5 PM	FRI	14	1,416	FRI	14	1,052	1,133	.93
US 183	1.2 MILES S. OF PHILLIPSBURG	PHILLIPS	2,387	2,449	2,369	- 0.8	- 3.3	252	4-5 PM	FRI	21	2,844	FRI	14	2,369	2,550	.93
K 23	14.5 MILES S. OF HOXIE	SHERIDAN	809	869	852	5.3	- 2.0	98	1-2 PM	THU	27	1,055	FRI	7	852	936	.91
I 70	2.2 MI. E OF KANORADO EXIT	SHERMAN	8,668	8,570	8,169	- 5.8	- 4.7	1,179	1-2 PM	MON	3	11,893	MON	3	8,169	8,127	1.01
US 24	7.3 MILES E. OF COLBY	THOMAS	1,945	1,963	1,882	- 3.2	- 4.1	214	5-6 PM	FRI	7	2,211	FRI	28	1,882	2,008	.94
K 25	1.8 MILES S. OF COLBY	THOMAS	933	907	859	- 7.9	- 5.3	105	5-6 PM	WED	19	1,065	MON	17	859	956	.90
I 70	1 MILE W. OF WAKEENEY	TREGO	9,883	9,966	9,179	- 7.1	- 7.9	882	3-4 PM	SUN	30	10,474	FRI	28	9,179	9,160	1.00
US 40	1.4 MILES E. OF KAN-COLO ST. LINE	WALLACE	637	589	567	- 11.0	- 3.7	65	12-1 PM	SAT	8	729	TUE	4	567	601	.94

Percent of Change for District 3 Stations

- 5.0 - 5.8

Month of September, 2012

Sparse Matrix Model

Date: 23-OCT-2012

---- Average Daily Traffic ----
for the Month
2010 2011 2012
Percent Change
Month
2010 2011

---- Maximum Hour ----
Volume Hour DOW Day
--- Maximum Day ---
Volume DOW Day
7 Day Avg
5 Day Avg
7 Day / 5 Day Avg

Route Description	Location Description	County	2010	2011	2012	2010	2011	Volume	Hour	DOW	Day	Volume	DOW	Day	7 Day Avg	5 Day Avg	7 Day / 5 Day Avg
Rural State Highways for District 4																	
US 54	3 MILES W. OF IOLA	ALLEN	3,066	2,912	2,788	- 9.1	- 4.3	313	5-6 PM	FRI	28	3,415	FRI	21	2,788	2,909	.96
US 169	1 MILE N. OF GREELEY	ANDERSON	3,295	3,319	3,109	- 5.6	- 6.3	329	5-6 PM	FRI	14	3,928	FRI	7	3,109	3,217	.97
US 69	2 MILES N. OF FT SCOTT	BOURBON	6,200	5,896													
US 166	0.5 MILES W. OF NIOTAZE	CHAUTAUQUA	2,590	2,531	2,515	- 2.9	- 0.6	267	2-3 PM	FRI	28	3,027	FRI	7	2,515	2,554	.98
I 35	2 MILES W. OF K- 131 INTCHG. N. OF LEBO	COFFEY	13,649	12,863	12,527	- 8.2	- 2.6	1,554	5-6 PM	SUN	30	15,516	FRI	14	12,527	12,209	1.03
US 59	4.3 MILES S. OF OTTAWA	FRANKLIN	6,132	5,845	5,876	- 4.2	0.5	739	5-6 PM	FRI	28	7,481	FRI	28	5,876	6,008	.98
I 35	2 MILES N.E. OF THE WELLSVILLE INTCHG.	FRANKLIN	20,329	19,462	19,696	- 3.1	1.2	2,122	5-6 PM	FRI	28	23,821	FRI	28	19,696	19,880	.99
US 400	3 MILES E. OF PARSONS	LABETTE	3,835	3,877	3,699	- 3.5	- 4.6	494	2-3 PM	MON	3	4,757	FRI	21	3,699	3,776	.98
US 59	4 MILES S. OF ERIE	NEOSHO	3,104	3,011	2,949	- 5.0	- 2.1	311	4-5 PM	FRI	14	3,701	FRI	21	2,949	3,210	.92
US 169	1 MILE N. OF THAYER	NEOSHO	4,267	4,221	4,043	- 5.2	- 4.2	452	4-5 PM	FRI	21	5,136	FRI	21	4,043	4,255	.95
US 75	1 MILE N. OF YATES CENTER	WOODSON	2,774	2,670	2,597	- 6.4	- 2.7	309	3-4 PM	MON	3	3,329	FRI	14	2,597	2,644	.98
K 105	2 MILES N. OF TORONTO	WOODSON	734	604	601	- 18.1	- 0.5	101	12-1 PM	SUN	2	860	SAT	1	601	590	1.02

Percent of Change for District 4 Stations

- 5.3 - 1.5

Rural State Highways for District 5

US 56	5.5 MILES E. OF GREAT BEND	BARTON	5,491	5,346	5,261	- 4.2	- 1.6	556	5-6 PM	FRI	14	6,140	FRI	14	5,261	5,519	.95
US 77	2 MILES N. OF EL DORADO	BUTLER	3,052	2,772	2,695	- 11.7	- 2.8	370	12-1 PM	SUN	16	3,523	SUN	16	2,695	2,633	1.02
US 400	1.5 MILES E. OF LEON	BUTLER	4,758	4,467													
US 77	3.7 MILES N. OF ARKANSAS CITY	COWLEY	11,692		10,794	- 7.7		1,102	3-4 PM	FRI	28	13,044	FRI	28	10,794	11,523	.94
US 160	6.2 MILES E. OF ATTICA	HARPER		1,550	1,579		1.9	182	3-4 PM	FRI	28	2,089	FRI	28	1,579	1,683	.94
US 50	3 MILES N.E. OF NEWTON	HARVEY	6,807	6,571	6,409	- 5.8	- 2.5	848	1-2 PM	SAT	15	9,875	SAT	15	6,409	6,335	1.01
US 54	5.8 MILES W. OF KINGMAN	KINGMAN	5,089	4,995	5,241	3.0	4.9	500	5-6 PM	FRI	21	6,390	FRI	21	5,241	5,325	.98
US 54	1.5 MILES W. OF HAVILAND	KIOWA	5,195	5,135	5,263	1.3	2.5	478	3-4 PM	FRI	14	6,110	FRI	21	5,263	5,399	.97
US 183	7 MILES S. OF GREENSBURG	KIOWA	935	972	1,065	13.9	9.6	107	3-4 PM	MON	24	1,290	THU	27	1,065	1,144	.93
US 56	5 MILES S.W. OF LARNED	PAWNEE	2,221	2,139	2,124	- 4.4	- 0.7	223	5-6 PM	FRI	28	2,587	FRI	28	2,124	2,216	.96
K 61	5 MILES S.W. OF ARLINGTON	RENO	2,212	2,121	2,077	- 6.1	- 2.1	213	5-6 PM	FRI	28	2,742	SAT	15	2,077	2,093	.99
K 14	1 MILE N. OF LYONS	RICE	1,620	1,581	1,464	- 9.6	- 7.4	165	3-4 PM	FRI	14	1,842	FRI	14	1,464	1,511	.97
K 42	3 MILES N.E. OF VIOLA	SEDGWICK	4,272		4,561	6.8		512	5-6 PM	FRI	21	5,520	FRI	21	4,561	4,905	.93
US 281	0.5 MILES S. OF ST. JOHN	STAFFORD	2,580	2,566	2,391	- 7.3	- 6.8	245	1-2 PM	FRI	21	2,999	FRI	21	2,391	2,580	.93
US 81	4.1 MILES S. OF WELLINGTON	SUMNER	1,840	1,711	1,739	- 5.5	1.6	195	3-4 PM	SAT	22	1,983	WED	12	1,739	1,818	.96

Percent of Change for District 5 Stations

- 3.6 - .4

Rural State Highways for District 6

US 83	8.2 MILES S. OF GARDEN CITY	FINNEY	4,264	4,229	4,363	2.3	3.2	438	5-6 PM	FRI	21	5,014	THU	6	4,363	4,645	.94
K 25	2.5 MILES N. OF ULYSSES	GRANT	1,540	1,609	1,571	2.0	- 2.4	177	5-6 PM	FRI	21	2,065	THU	27	1,571	1,732	.91
K 27	15 MILES N OF TRIBUNE	GREELEY	718	755	722	0.6	- 4.4	87	3-4 PM	TUE	25	878	FRI	28	722	804	.90
US 50	0.8 MILES E. OF KAN-COLO ST. LINE	HAMILTON	1,773	1,738	1,736	- 2.1	- 0.1	242	3-4 PM	MON	3	2,242	MON	3	1,736	1,799	.96
US 283	8.3 MILES N. OF JETMORE	HODGEMAN	931	929	1,110	19.2	19.5	103	3-4 PM	TUE	4	1,304	WED	5	1,110	1,224	.91
US 54	3.7 MILES W. OF MEADE	MEADE	3,618	3,536	3,605	- 0.4	2.0	319	4-5 PM	FRI	28	4,082	FRI	28	3,605	3,702	.97
K 96	12 MILES W. OF SCOTT CITY	WICHITA	1,326	1,308	1,281	- 3.4	- 2.1	126	10-11 AM	SAT	29	1,561	FRI	28	1,281	1,394	.92

Percent of Change for District 6 Stations

1.5 2.0

Month of September, 2012

Sparse Matrix Model

Date: 23-OCT-2012

---- Average Daily Traffic ----
for the Month
2010 2011 2012

Percent Change
Month
2010 2011

---- Maximum Hour ----
Volume Hour DOW Day

--- Maximum Day ---
Volume DOW Day

7 Day Avg
5 Day Avg
7 Day / 5 Day Avg

Route Description Location Description County

Rural Secondary Stations

RS 61	6.5 MILES S.W. OF HIAWATHA	BROWN	286	207	258	- 9.8	24.6	39	7-8 AM	TUE	4	315	THU	13	258	270	.96
RS 463	0.7 MILES S.W. OF BELOIT	MITCHELL	283	278	251	- 11.3	- 9.7	39	5-6 PM	FRI	21	315	FRI	7	251	269	.93
RS 272	2 MILES S. OF QUINTER	GOVE	440	403	360	- 18.2	- 10.7	76	4-5 PM	THU	6	529	THU	6	360	373	.97
RS 13	0.5 MILES N. OF BUSH CITY	ANDERSON	366	350	312	- 14.8	- 10.9	40	2-3 PM	WED	19	400	FRI	21	312	324	.96
RS 18	3 MILES E. OF PARSONS	LABETTE	1,926	1,857	1,791	- 7.0	- 3.6	230	4-5 PM	THU	6	2,290	THU	6	1,791	1,945	.92
RS 303	0.8 MI. S. OF US-54 & K17 JCT. (MIDWAY)	KINGMAN	361	324	331	- 8.3	2.2	48	7-8 AM	THU	6	411	TUE	18	331	338	.98
RS 251	6 MILES W. OF FORD	FORD	466	443	512	9.9	15.6	72	5-6 PM	FRI	7	715	MON	3	512	526	.97

Percent of Change for Rural Secondary Stations

- 7.6 - 1.2

Reservoir Stations

K 237	1.5 MILES N. OF JCT. US 24	JEFFERSON	1,612	1,349	1,268	- 21.3	- 6.0	205	1-2 PM	SUN	2	2,179	SUN	2	1,268	1,204	1.05
LOCAL ROAD	KANOPOLIS RESERVOIR N. OF DAM	ELLSWORTH	322	270	184	- 42.9	- 31.9					976	SAT	1	184	92	2.00
LOCAL ROAD	KANOPOLIS RESERVOIR S. OF DAM	ELLSWORTH	330	339	305	- 7.6	- 10.0					1,477	SAT	1	305	191	1.60
LOCAL ROAD	CEDAR BLUFF RESERVOIR N. OF DAM	TREGO	63	188	248	293.7	31.9					1,513	SUN	2	248	164	1.51

Percent of Change for Reservoir Stations

- 13.8 - 6.6

Kansas City Stations

US 69	0.8 MILES N. OF 167TH ST	JOHNSON	27,167	27,854													
135TH	135TH E. OF MUR-LEN	JOHNSON	37,575	33,609	34,238	- 8.9	1.9	3,330	5-6 PM	FRI	14	39,736	FRI	21	34,238	35,670	.96
BLACKBOB	BLACKBOB RD. S. OF 139TH	JOHNSON	21,783		21,241	- 2.5		2,230	11-12 AM	SAT	29	25,391	SAT	29	21,241	21,108	1.01
I 435	0.8 MILES S. OF I - 70	WYANDOTTE	61,085	59,890	60,810	- 0.5	1.5	6,870	5-6 PM	FRI	28	75,461	FRI	28	60,810	63,364	.96

Percent of Change for Kansas City Stations

- 3.4 1.7

Salina Stations

OHIO ST.	OHIO ST. N. OF WESTCHESTER DR.	SALINE	17,687		16,716	- 5.5		1,676	4-5 PM	THU	27	19,718	FRI	21	16,716	18,172	.92
----------	--------------------------------	--------	--------	--	--------	-------	--	-------	--------	-----	----	--------	-----	----	--------	--------	-----

Percent of Change for Salina Stations

- 5.5

Topeka Stations

WANAMAHER	WANAMAHER RD. N. OF 33RD ST.	SHAWNEE	11,643														
45TH ST.	45TH ST. E. OF INDIANA	SHAWNEE	7,380	7,427	8,534	15.6	14.9	944	5-6 PM	FRI	28	10,248	FRI	28	8,534	8,697	.98
W. 10TH ST.	10TH STREET WEST OF WASHBURN	SHAWNEE	10,398	9,772													
N. TOPEKA	TOPEKA BLVD. NORTH OF PARAMORE ST.	SHAWNEE	18,890	18,649													
I 70	I 70 E. OF MACVICAR ST.	SHAWNEE	47,091	46,072	44,472	- 5.6	- 3.5	4,870	4-5 PM	FRI	21	54,707	FRI	21	44,472	48,075	.93
I 470	I 470 N.W. OF HUNTOON	SHAWNEE	33,575	29,026	32,746	- 2.5	12.8	3,681	5-6 PM	FRI	14	39,356	FRI	14	32,746	35,177	.93
US 40	US 40 E. OF TECUMSEH RD.	SHAWNEE	5,108	4,989	4,898	- 4.1	- 1.8	677	7-8 AM	WED	26	5,967	FRI	21	4,898	5,351	.92
US 75	US 75 N. OF S.W. 57TH	SHAWNEE		14,274	15,767		10.5	1,918	7-8 AM	TUE	18	18,526	FRI	7	15,767	17,117	.92

Percent of Change for Topeka Stations

- 2.7 4.5

