

**KANSAS DEPARTMENT OF TRANSPORTATION
BUREAU OF TRANSPORTATION PLANNING**

SEPTEMBER 2011

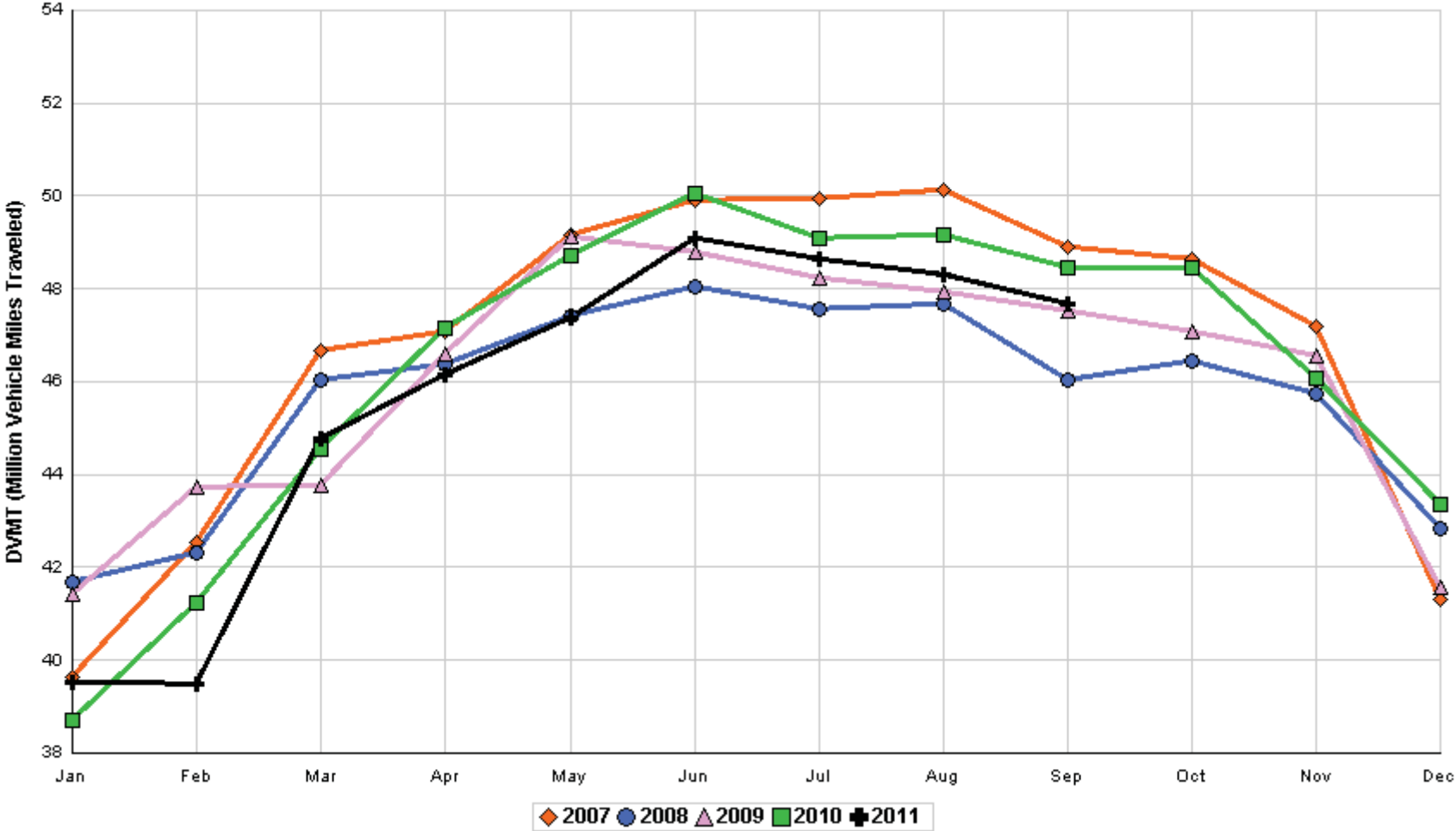
SIGNIFICANT FACTS AND TRENDS



Travel on the Kansas State Highway System				
	Daily Vehicle Miles		% Change	
	(In Millions)		2010 to 2011	
Month	2010	2011	Month	Year
Jan	38.710	39.540	2.1	2.1
Feb	41.232	39.486	- 4.2	- 1.1
Mar	44.532	44.785	0.6	- 0.5
Apr	47.139	46.148	- 2.1	- 1.0
May	48.727	47.370	- 2.8	- 1.4
Jun	50.068	49.100	- 1.9	- 1.5
Jul	49.096	48.638	- 0.9	- 1.4
Aug	49.176	48.317	- 1.7	- 1.4
Sep	48.444	47.688	- 1.6	- 1.5
Oct	48.437			
Nov	46.091			
Dec	43.355			
Average	46.251			

**Contact the Traffic and Field Operations Unit with questions or requests at:
(785)-296-3841 or E-mail: TrafficCounts@ksdot.org
The Monthly Average Daily Traffic (MADT) is Calculated Utilizing the
Day-Of-Week (DOW) Method. Missing Traffic Count Data will Not be Estimated
Therefore Station Summary Data will be Blank where Data is Not Available.**

Total Travel on Kansas State Highway System 2007 - 2011



Month of September, 2011

Sparse Matrix Model

Date: 02-NOV-2011

Route Description	Location Description	County	Average Daily Traffic for the Month			Percent Change Month		Maximum Hour				Maximum Day			7 Day Avg	5 Day Avg	7 Day / 5 Day Avg
			2009	2010	2011	2009	2010	Volume	Hour	DOW	Day	Volume	DOW	Day			

Rural State Highways for District 1

US-75	1.2 MILES N. OF US-36 I.C.	BROWN	3,734	4,058	5,943	59.2	46.5	728	5-6 PM	WED	14	7,585	FRI	30	5,943	5,913	1.01
US 24	1.5 MILES N.E. OF LAWRENCE	DOUGLAS	8,171	7,798	7,107	- 13.0	- 8.9	1,127	5-6 PM	FRI	16	8,829	FRI	2	7,107	7,131	1.00
US 56	4 MILES E. OF OVERBROOK	DOUGLAS	2,007	2,073	2,040	1.6	- 1.6	242	5-6 PM	FRI	2	2,371	SAT	3	2,040	1,981	1.03
US 75	5.8 MILES N. OF HOLTON	JACKSON	6,367	6,503	6,757	6.1	3.9	715	5-6 PM	FRI	23	8,278	FRI	30	6,757	6,742	1.00
K 10	0.2 MILES E. OF RS. 346 INTCHG.	JOHNSON	34,302	34,755	33,168	- 3.3	- 4.6	3,753	5-6 PM	FRI	16	39,316	FRI	30	33,168	34,238	.97
K 99	2.9 MILES S. OF EMPORIA	LYON	4,146	3,909	3,956	- 4.6	1.2	441	4-5 PM	THU	22	4,697	FRI	16	3,956	4,173	.95
US 36	13 MILES E. OF MARYSVILLE	MARSHALL	2,751	2,748	3,213	16.8	16.9	380	5-6 PM	FRI	16	4,298	FRI	16	3,213	3,231	.99
K 68	0.15 MILES E. OF JCT K 268	OSAGE	3,031	2,971	2,883	- 4.9	- 3.0	360	6-7 PM	FRI	2	3,708	FRI	2	2,883	2,787	1.03
K 268	0.1 MILES E. OF US 75	OSAGE	3,011	3,156	3,012	0.0	- 4.6	353	5-6 PM	FRI	9	3,833	FRI	2	3,012	3,004	1.00
K 18	0.7 MILES N.E. OF OGDEN	RILEY	22,979	26,459													
US 24	4 MILES N. OF MANHATTAN	RILEY	7,081	7,429	7,438	5.0	0.1	867	5-6 PM	FRI	2	9,284	FRI	2	7,438	7,297	1.02
K 4	1MI. S. OF JCT. US-24	SHAWNEE	8,762	8,913	8,981	2.5	0.8	1,054	5-6 PM	FRI	9	10,787	FRI	9	8,981	9,670	.93
US 24	1 MILE N.W. OF ROSSVILLE	SHAWNEE	4,622	4,688	4,631	0.2	- 1.2	515	5-6 PM	FRI	30	5,794	FRI	30	4,631	4,931	.94
I 70	4.7 MILES E. OF K 30 INTCHG. (MAPLE HILL)	WABAUNSEE	21,369	21,700													

Percent of Change for District 1 Stations

1.3 .1

Rural State Highways for District 2

K 9	5.8 MILES E. OF CLIFTON	CLAY	344	323	358	4.1	10.8	64	11-12 AM	SUN	11	495	FRI	2	358	391	.92
K 15	3.3 MILES N. OF CLAY CENTER	CLAY	1,971	2,044	1,997	1.3	- 2.3	235	5-6 PM	FRI	9	2,521	FRI	2	1,997	2,098	.95
I 70	W. OF K-232 INTCHG. (WILSON)	ELLSWORTH		10,799	10,764		- 0.3	1,455	4-5 PM	MON	5	14,823	MON	5	10,764	10,584	1.02
K 141	2.8 MILES S. OF KANOPOLIS DAM	ELLSWORTH	584	615													
K 18	1.8 MILES W. OF JUNCTION CITY	GEARY	1,210	1,498	1,412	16.7	- 5.7	197	7-8 AM	TUE	6	1,718	FRI	23	1,412	1,515	.93
I 70	4.5 MILES S.W. OF JUNCTION CITY	GEARY	17,464	18,082	17,357	- 0.6	- 4.0	1,877	4-5 PM	FRI	2	22,971	FRI	2	17,357	16,970	1.02
US 77	4 MILES S. OF JUNCTION CITY	GEARY	3,915	4,496	3,927	0.3	- 12.7	502	5-6 PM	FRI	23	5,369	SAT	17	3,927	3,842	1.02
US 36	1 MILE E. OF MANKATO	JEWELL	1,965	2,033	1,978	0.7	- 2.7	237	6-7 PM	FRI	16	2,781	FRI	16	1,978	2,086	.95
K 18	0.5 MILES W. OF LINCOLN	LINCOLN	1,038	1,052	1,137	9.5	8.1	141	6-7 PM	FRI	9	1,477	FRI	9	1,137	1,204	.94
I 135	0.5 MILES N. OF US 56 INTCHG. (MCPHERSON)	MCPHERSON		12,179	13,327		9.4	1,439	5-6 PM	FRI	23	16,005	SAT	17	13,327	13,021	1.02
K 14	3 MILES S. OF BELOIT	MITCHELL	878	867	889	1.3	2.5	124	5-6 PM	FRI	9	1,223	FRI	30	889	976	.91
US 81	2.5 MILES S. OF BELLEVILLE	REPUBLIC	4,860	5,152													

Percent of Change for District 2 Stations

.9 - .4

Rural State Highways for District 3

US 83	6.2 MILES S. OF OAKLEY	LOGAN	1,772	1,928	2,098	18.4	8.8	213	4-5 PM	FRI	9	2,511	FRI	30	2,098	2,284	.92
US 36	9.5 MILES W. OF NORTON	NORTON		1,084	1,107		2.1	126	5-6 PM	FRI	9	1,309	FRI	9	1,107	1,175	.94
US 183	1.2 MILES S. OF PHILLIPSBURG	PHILLIPS	2,409	2,387	2,449	1.7	2.6	318	5-6 PM	FRI	23	3,193	FRI	23	2,449	2,608	.94
K 23	14.5 MILES S. OF HOXIE	SHERIDAN	809	809	869	7.4	7.4	94	3-4 PM	THU	15	1,091	FRI	9	869	966	.90
I 70	2.2 MI. E OF KANORADO EXIT	SHERMAN		8,668	8,570		- 1.1	1,161	12-1 PM	MON	5	12,582	MON	5	8,570	8,548	1.00
US 24	7.3 MILES E. OF COLBY	THOMAS	1,906	1,945	1,963	3.0	0.9	207	4-5 PM	WED	21	2,469	FRI	23	1,963	2,111	.93
K 25	1.8 MILES S. OF COLBY	THOMAS	892	933	907	1.7	- 2.8	103	3-4 PM	FRI	30	1,120	FRI	9	907	1,001	.91
I 70	1 MILE W. OF WAKEENEY	TREGO	9,363	9,883	9,966	6.4	0.8	1,386	2-3 PM	MON	5	13,254	MON	5	9,966	10,112	.99
US 40	1.4 MILES E. OF KAN-COLO ST. LINE	WALLACE	548	637	589	7.5	- 7.5	86	12-1 PM	FRI	2	900	FRI	2	589	638	.92

Percent of Change for District 3 Stations

6.5 .9

Month of September, 2011

Sparse Matrix Model

Date: 02-NOV-2011

----- Average Daily Traffic -----
for the Month

Percent Change
Month

----- Maximum Hour -----
Volume Hour DOW Day

--- Maximum Day ---
Volume DOW Day

7 Day Avg
5 Day Avg
7 Day / 5 Day Avg

Route Description	Location Description	County	2009	2010	2011	2009	2010	Volume	Hour	DOW	Day	Volume	DOW	Day	7 Day Avg	5 Day Avg	7 Day / 5 Day Avg
-------------------	----------------------	--------	------	------	------	------	------	--------	------	-----	-----	--------	-----	-----	-----------	-----------	-------------------

Rural State Highways for District 4

US 54	3 MILES W. OF IOLA	ALLEN	3,063	3,066	2,912	- 4.9	- 5.0	326	5-6 PM	FRI	2	3,908	FRI	2	2,912	3,044	.96
US 169	1 MILE N. OF GREELEY	ANDERSON	3,384	3,295	3,319	- 1.9	0.7	376	4-5 PM	FRI	16	3,973	FRI	9	3,319	3,431	.97
US 69	2 MILES N. OF FT SCOTT	BOURBON		6,200	5,896	- 4.9		644	5-6 PM	FRI	16	7,356	FRI	16	5,896	5,895	1.00
US 166	0.5 MILES W. OF NIOTAZE	CHAUTAUQUA	2,571	2,590	2,531	- 1.6	- 2.3	298	3-4 PM	MON	5	3,136	FRI	23	2,531	2,567	.99
I 35	2 MILES W. OF K- 131 INTCHG. N. OF LEBO	COFFEY	13,370	13,649	12,863	- 3.8	- 5.8	1,393	4-5 PM	FRI	30	15,845	FRI	23	12,863	12,555	1.02
US 59	4.3 MILES S. OF OTTAWA	FRANKLIN	6,135	6,132	5,845	- 4.7	- 4.7	646	5-6 PM	FRI	2	7,391	FRI	2	5,845	5,992	.98
I 35	2 MILES N.E. OF THE WELLSVILLE INTCHG.	FRANKLIN	19,085	20,329	19,462	2.0	- 4.3	2,022	4-5 PM	FRI	9	22,448	FRI	9	19,462	19,915	.98
US 400	3 MILES E. OF PARSONS	LABETTE	3,826	3,835	3,877	1.3	1.1	542	5-6 PM	FRI	2	6,086	FRI	2	3,877	4,011	.97
US 59	4 MILES S. OF ERIE	NEOSHO	3,079	3,104	3,011	- 2.2	- 3.0	377	5-6 PM	FRI	9	3,979	FRI	9	3,011	3,287	.92
US 169	1 MILE N. OF THAYER	NEOSHO	4,295	4,267	4,221	- 1.7	- 1.1	444	4-5 PM	FRI	23	5,200	FRI	30	4,221	4,425	.95
US 75	1 MILE N. OF YATES CENTER	WOODSON	2,758	2,774	2,670	- 3.2	- 3.7	304	5-6 PM	FRI	9	3,523	FRI	30	2,670	2,716	.98
K 105	2 MILES N. OF TORONTO	WOODSON	698	734	604	- 13.5	- 17.7	90	12-1 PM	SUN	25	774	SAT	24	604	602	1.00

Percent of Change for District 4 Stations

- 1.5 - 3.9

Rural State Highways for District 5

US 56	5.5 MILES E. OF GREAT BEND	BARTON	5,191	5,491	5,346	3.0	- 2.6	641	5-6 PM	FRI	30	6,750	FRI	16	5,346	5,575	.96
US 77	2 MILES N. OF EL DORADO	BUTLER	2,780	3,052	2,772	- 0.3	- 9.2	297	5-6 PM	FRI	16	3,414	FRI	2	2,772	2,733	1.01
US 400	1.5 MILES E. OF LEON	BUTLER	4,862	4,758	4,467	- 8.1	- 6.1	480	4-5 PM	FRI	23	5,814	FRI	30	4,467	4,518	.99
US 77	3.7 MILES N. OF ARKANSAS CITY	COWLEY	10,880	11,692	9,624	- 11.5	- 17.7	1,125	4-5 PM	FRI	30	11,853	FRI	2	9,624	10,194	.94
US 160	6.2 MILES E. OF ATTICA	HARPER	1,442		1,550	7.5		285	9-10 AM	SAT	24	2,758	SAT	24	1,550	1,570	.99
US 50	3 MILES N.E. OF NEWTON	HARVEY	6,565	6,807	6,571	0.1	- 3.5	823	2-3 PM	SAT	17	9,930	SAT	17	6,571	6,479	1.01
US 54	5.8 MILES W. OF KINGMAN	KINGMAN	4,945	5,089	4,995	1.0	- 1.8	493	3-4 PM	FRI	23	6,257	FRI	23	4,995	5,064	.99
US 54	1.5 MILES W. OF HAVILAND	KIOWA	5,108	5,195	5,135	0.5	- 1.2	530	4-5 PM	FRI	16	6,187	FRI	16	5,135	5,280	.97
US 183	7 MILES S. OF GREENSBURG	KIOWA	968	935	972	0.4	4.0	104	8-9 AM	TUE	27	1,291	FRI	30	972	1,066	.91
US 56	5 MILES S.W. OF LARNED	PAWNEE	2,114	2,221	2,139	1.2	- 3.7	263	4-5 PM	FRI	2	2,922	FRI	2	2,139	2,238	.96
K 61	5 MILES S.W. OF ARLINGTON	RENO	2,183	2,212	2,121	- 2.8	- 4.1	216	5-6 PM	FRI	23	2,582	SAT	10	2,121	2,088	1.02
K 14	1 MILE N. OF LYONS	RICE	1,679	1,620	1,581	- 5.8	- 2.4	183	4-5 PM	FRI	23	1,910	FRI	9	1,581	1,622	.97
K 42	3 MILES N.E. OF VIOLA	SEDGWICK	4,135	4,272													
US 281	0.5 MILES S. OF ST. JOHN	STAFFORD	2,452	2,580	2,566	4.6	- 0.5	273	5-6 PM	FRI	23	3,196	FRI	23	2,566	2,750	.93
US 81	4.1 MILES S. OF WELLINGTON	SUMNER	1,890	1,840	1,711	- 9.5	- 7.0	177	5-6 PM	WED	21	2,011	FRI	2	1,711	1,805	.95

Percent of Change for District 5 Stations

- 2.8 - 6.5

Rural State Highways for District 6

US 83	8.2 MILES S. OF GARDEN CITY	FINNEY	4,002	4,264	4,229	5.7	- 0.8	426	5-6 PM	THU	15	4,943	THU	1	4,229	4,476	.94
US 50	3.3 MILES W. OF DODGE CITY	FORD	5,866														
K 25	2.5 MILES N. OF ULYSSES	GRANT	1,585	1,540	1,609	1.5	4.5	248	11-12 AM	SAT	10	1,924	THU	22	1,609	1,727	.93
K 27	15 MILES N OF TRIBUNE	GREELEY	631	718	755	19.7	5.2	93	3-4 PM	WED	14	1,033	FRI	2	755	856	.88
US 50	0.8 MILES E. OF KAN-COLO ST. LINE	HAMILTON	1,701	1,773	1,738	2.2	- 2.0	249	3-4 PM	MON	5	2,478	FRI	2	1,738	1,757	.99
US 283	8.3 MILES N. OF JETMORE	HODGEMAN	851	931	929	9.2	- 0.2	104	5-6 PM	FRI	30	1,121	FRI	30	929	1,007	.92
US 54	3.7 MILES W. OF MEADE	MEADE		3,618	3,536		- 2.3	320	6-7 PM	FRI	16	4,038	FRI	16	3,536	3,637	.97
K 96	12 MILES W. OF SCOTT CITY	WICHITA	1,275	1,326	1,308	2.6	- 1.4	128	5-6 PM	FRI	23	1,431	FRI	23	1,308	1,359	.96

Percent of Change for District 6 Stations

5.2 - .5

Month of September, 2011

Sparse Matrix Model

----- Average Daily Traffic -----
for the Month

Percent Change
Month

----- Maximum Hour -----
Volume Hour DOW Day

--- Maximum Day ---
Volume DOW Day

7 Day Avg 5 Day Avg 7 Day / 5 Day Avg

Route Description Location Description County

2009 2010 2011 2009 2010

Rural Secondary Stations

RS 61	6.5 MILES S.W. OF HIAWATHA	BROWN	302	286	207	- 31.5	- 27.6	33	11-12 AM	SAT	10	297	SAT	10	207	209	.99
RS 463	0.7 MILES S.W. OF BELOIT	MITCHELL	271	283	278	2.6	- 1.8	43	5-6 PM	THU	22	378	FRI	23	278	304	.91
RS 272	2 MILES S. OF QUINTER	GOVE	425	440	403	- 5.2	- 8.4	71	2-3 PM	FRI	9	714	FRI	9	403	419	.96
RS 13	0.5 MILES N. OF BUSH CITY	ANDERSON	336	366	350	4.2	- 4.4	50	5-6 PM	FRI	16	434	FRI	16	350	362	.97
RS 18	3 MILES E. OF PARSONS	LABETTE	1,950	1,926	1,857	- 4.8	- 3.6	216	5-6 PM	WED	7	2,405	FRI	2	1,857	2,020	.92
RS 303	0.8 MI. S. OF US-54 & K17 JCT. (MIDWAY)	KINGMAN	392	361	324	- 17.3	- 10.2	46	6-7 PM	FRI	2	429	FRI	9	324	325	1.00
RS 251	6 MILES W. OF FORD	FORD	629	466	443	- 29.6	- 4.9	66	5-6 PM	FRI	9	590	FRI	2	443	453	.98

Percent of Change for Rural Secondary Stations

- 10.3 - 6.4

Reservoir Stations

K 237	1.5 MILES N. OF JCT. US 24	JEFFERSON	1,395	1,612	1,349	- 3.3	- 16.3	226	12-1 PM	SUN	4	2,229	SUN	4	1,349	1,241	1.09
LOCAL ROAD	KANOPOLIS RESERVOIR N. OF DAM	ELLSWORTH	166	322	270	62.7	- 16.1					1,295	SAT	3	270	199	1.36
LOCAL ROAD	KANOPOLIS RESERVOIR S. OF DAM	ELLSWORTH	361	330	339	- 6.1	2.7					1,380	SAT	3	339	253	1.34
LOCAL ROAD	CEDAR BLUFF RESERVOIR N. OF DAM	TREGO	104	63	188	80.8	198.4					893	SUN	4	188	106	1.77

Percent of Change for Reservoir Stations

5.9 - 7.8

Kansas City Stations

I 35	0.5 MILES S.W. OF 87TH ST INTCHG.	JOHNSON		95,101													
US 69	0.8 MILES N. OF 167TH ST	JOHNSON	26,564	27,167	27,854	4.9	2.5	3,143	7-8 AM	WED	21	33,027	FRI	2	27,854	29,658	.94
135TH	135TH E. OF MUR-LEN	JOHNSON	33,680	37,575	33,609	- 0.2	- 10.6	3,276	5-6 PM	WED	7	39,750	FRI	9	33,609	35,205	.95
BLACKBOB	BLACKBOB RD. S. OF 139TH	JOHNSON	22,590	21,783													
I 435	0.8 MILES S. OF I - 70	WYANDOTTE	59,699	61,085	59,890	0.3	- 2.0	7,206	5-6 PM	FRI	23	75,000	FRI	23	59,890	62,932	.95

Percent of Change for Kansas City Stations

1.2 - 3.6

Salina Stations

OHIO ST.	OHIO ST. N. OF WESTCHESTER DR.	SALINE	17,808	17,687													
----------	--------------------------------	--------	--------	--------	--	--	--	--	--	--	--	--	--	--	--	--	--

Percent of Change for Salina Stations

Topeka Stations

WANAMAKER	WANAMAKER RD. N. OF 33RD ST.	SHAWNEE	9,702	11,643													
45TH ST.	45TH ST. E. OF INDIANA	SHAWNEE	7,126	7,380	7,427	4.2	0.6	826	5-6 PM	FRI	9	8,993	SAT	10	7,427	7,596	.98
W. 10TH ST.	10TH STREET WEST OF WASHBURN	SHAWNEE	10,664	10,398	9,772	- 8.4	- 6.0	1,015	3-4 PM	FRI	2	11,815	FRI	9	9,772	10,976	.89
TYLER ST.	TYLER ST. N. OF LAURENT ST.	SHAWNEE	624	607													
N. TOPEKA	TOPEKA BLVD. NORTH OF PARAMORE ST.	SHAWNEE	18,095	18,890	18,649	3.1	- 1.3	2,153	2-3 PM	FRI	30	23,428	FRI	30	18,649	20,376	.92
I 70	I 70 E. OF MACVICAR ST.	SHAWNEE	46,521	47,091	46,072	- 1.0	- 2.2	5,026	4-5 PM	FRI	9	56,062	FRI	16	46,072	49,425	.93
I 470	I 470 N.W. OF HUNTOON	SHAWNEE	32,761	33,575	29,026	- 11.4	- 13.5	3,057	5-6 PM	TUE	13	33,957	FRI	9	29,026	31,421	.92
US 40	US 40 E. OF TECUMSEH RD.	SHAWNEE	4,914	5,108	4,989	1.5	- 2.3	676	5-6 PM	WED	21	6,017	FRI	2	4,989	5,506	.91
US 75	US 75 N. OF S.W. 57TH	SHAWNEE	14,504		14,274	- 1.6		1,625	7-8 AM	TUE	13	17,033	FRI	30	14,274	15,466	.92

Percent of Change for Topeka Stations

- 3.3 - 5.3

Month of September, 2011

Sparse Matrix Model

Date: 02-NOV-2011

Average Daily Traffic			Percent Change		Maximum Hour			Maximum Day			7 Day	5 Day	7 Day /	
for the Month			Month		Volume	Hour	DOW	Day	Volume	DOW	Day	Avg	Avg	5 Day
2009	2010	2011	2009	2010										Avg

Route Description	Location Description	County
-------------------	----------------------	--------

Wichita Stations

K 96	K-96 E. OF GREENWICH RD.	SEDGWICK	23,238	23,326														
US 54	KELLOGG E. OF WEST ST.	SEDGWICK			84,314				8,436	5-6 PM	THU	22	102,377	FRI	30	84,314	92,344	.91
13TH ST.	13TH ST W. OF PINECREST	SEDGWICK	17,014	16,814	14,375	- 15.5	- 14.5		1,527	5-6 PM	WED	14	17,160	FRI	30	14,375	15,628	.92
ROCK RD.	ROCK RD. S. OF CENTRAL AVE	SEDGWICK	30,972	31,735	29,188	- 5.8	- 8.0		2,803	5-6 PM	FRI	30	35,579	FRI	30	29,188	30,247	.96
21ST ST.	21ST ST E. OF WASHINGTON	SEDGWICK	13,923	8,109	12,544	- 9.9	54.7		1,567	4-5 PM	FRI	23	15,141	FRI	2	12,544	13,473	.93
HILLSIDE ST.	HILLSIDE S. OF 15TH ST	SEDGWICK	14,255	12,534														
I 235	I 235 S. OF MAPLE ST	SEDGWICK	50,373	49,020	46,171	- 8.3	- 5.8		4,821	5-6 PM	WED	21	54,708	FRI	30	46,171	49,959	.92
I 135	I-135 N. OF 21ST ST.	SEDGWICK	61,024	61,837	65,008	6.5	5.1		6,943	7-8 AM	THU	8	79,018	FRI	30	65,008	73,439	.89
					- 3.5		- .1											

Percent of Change for Wichita Stations

NOTE: * Excluded from Percent Change Totals