

**KANSAS DEPARTMENT OF TRANSPORTATION
BUREAU OF TRANSPORTATION PLANNING**

SEPTEMBER 2010

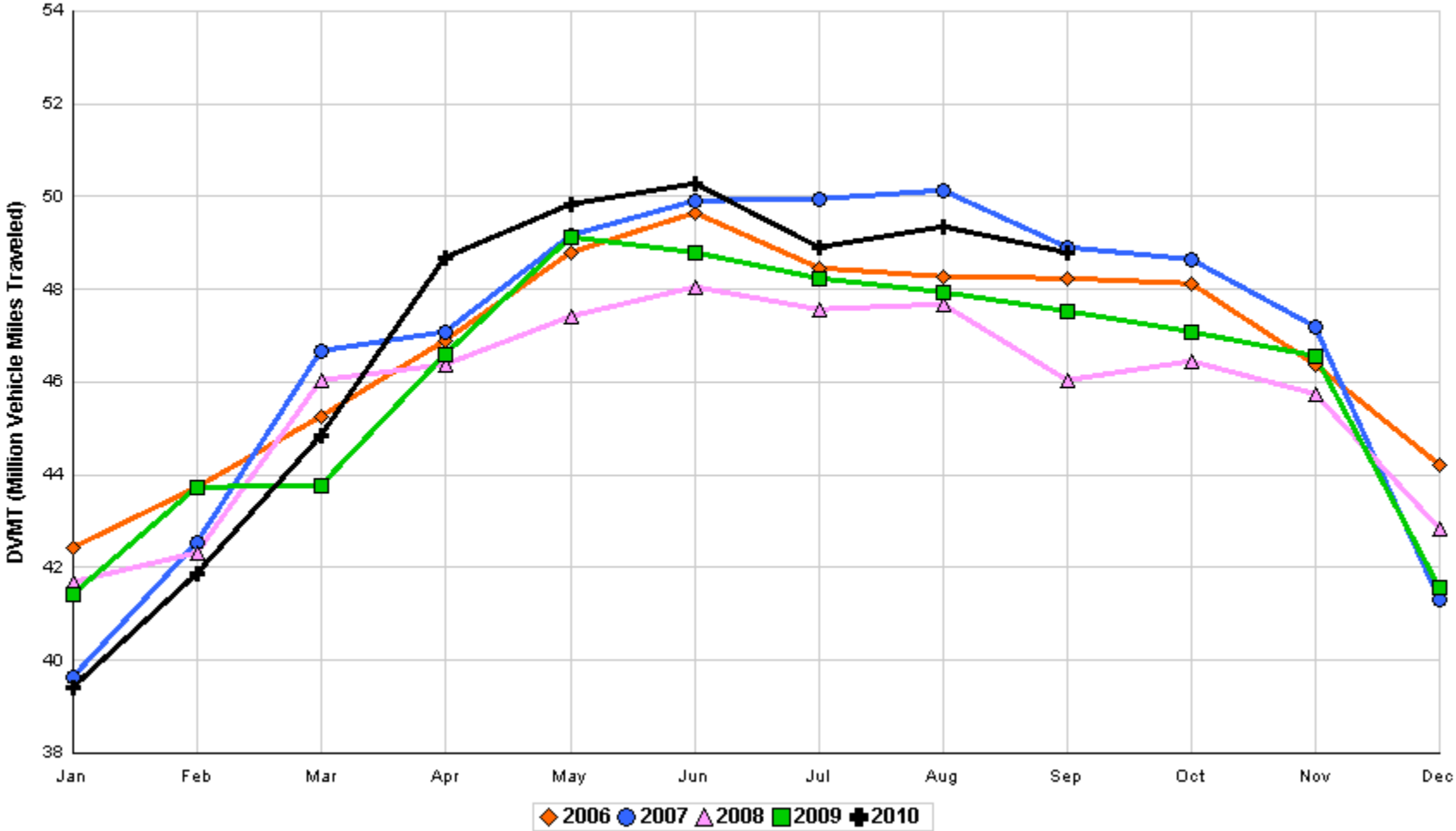
SIGNIFICANT FACTS AND TRENDS



Travel on the Kansas State Highway System				
	Daily Vehicle Miles		% Change	
	(In Millions)		2009 to 2010	
Month	2009	2010	Month	Year
Jan	41.421	39.400	- 4.9	- 4.9
Feb	43.731	41.874	- 4.2	- 4.6
Mar	43.756	44.864	2.5	- 2.1
Apr	46.605	48.668	4.4	- 0.4
May	49.138	49.819	1.4	0.0
Jun	48.804	50.287	3.0	0.5
Jul	48.235	48.919	1.4	0.7
Aug	47.944	49.350	2.9	1.0
Sep	47.523	48.808	2.7	1.2
Oct	47.090			
Nov	46.562			
Dec	41.576			
Average	46.032			

**Contact the Traffic and Field Operations Unit with questions or requests at:
(785)-296-3841 or E-mail: TrafficCounts@ksdot.org
The Monthly Average Daily Traffic (MADT) is Calculated Utilizing the
Day-Of-Week (DOW) Method. Missing Traffic Count Data will Not be Estimated
Therefore Station Summary Data will be Blank where Data is Not Available.**

Total Travel on Kansas State Highway System 2006 - 2010



Month of September, 2010

Sparse Matrix Model

Date: 28-OCT-2010

Route Description	Location Description	County	Average Daily Traffic for the Month			Percent Change Month		Maximum Hour				Maximum Day			7 Day Avg	5 Day Avg	7 Day / 5 Day Avg
			2008	2009	2010	2008	2009	Volume	Hour	DOW	Day	Volume	DOW	Day			

Rural State Highways for District 1

US-75	1.2 MILES N. OF US-36 I.C.	BROWN	3,447	3,734	4,058	17.7	8.7	494	5-6 PM	FRI	3	5,579	FRI	3	4,058	4,189	.97
US 24	1.5 MILES N.E. OF LAWRENCE	DOUGLAS	7,637	8,171	7,798	2.1	- 4.6	1,188	5-6 PM	FRI	3	10,512	FRI	3	7,798	7,841	.99
US 56	4 MILES E. OF OVERBROOK	DOUGLAS	1,814	2,007	2,073	14.3	3.3	258	5-6 PM	FRI	3	2,608	SAT	18	2,073	2,011	1.03
US 75	5.8 MILES N. OF HOLTON	JACKSON	5,975	6,367	6,503	8.8	2.1	755	5-6 PM	FRI	3	8,945	FRI	3	6,503	6,526	1.00
K 10	0.2 MILES E. OF RS. 346 INTCHG.	JOHNSON	31,261	34,302	34,755	11.2	1.3	3,825	5-6 PM	FRI	17	41,018	SAT	25	34,755	35,532	.98
K 99	2.9 MILES S. OF EMPORIA	LYON	3,755	4,146	3,909	4.1	- 5.7	449	5-6 PM	FRI	17	5,003	FRI	3	3,909	4,075	.96
US 36	13 MILES E. OF MARYSVILLE	MARSHALL	2,482	2,751	2,748	10.7	- 0.1	323	4-5 PM	FRI	3	3,685	FRI	17	2,748	2,810	.98
K 68	0.15 MILES E. OF JCT K 268	OSAGE	2,757	3,031	2,971	7.8	- 2.0	397	6-7 PM	FRI	3	4,105	FRI	3	2,971	2,817	1.05
K 268	0.1 MILES E. OF US 75	OSAGE	2,772	3,011	3,156	13.9	4.8	382	5-6 PM	THU	23	3,957	FRI	3	3,156	3,155	1.00
K 18	0.7 MILES N.E. OF OGDEN	RILEY	23,035	22,979	26,459	14.9	15.1	3,011	4-5 PM	FRI	17	32,326	FRI	17	26,459	28,280	.94
US 24	4 MILES N. OF MANHATTAN	RILEY	6,677	7,081	7,429	11.3	4.9	895	5-6 PM	FRI	3	9,530	FRI	3	7,429	7,320	1.01
K 4	1MI. S. OF JCT. US-24	SHAWNEE	8,394	8,762	8,913	6.2	1.7	1,024	5-6 PM	FRI	10	11,065	FRI	3	8,913	9,383	.95
US 24	1 MILE N.W. OF ROSSVILLE	SHAWNEE	5,089	4,622	4,688	- 7.9	1.4	543	6-7 PM	FRI	3	5,877	FRI	3	4,688	4,895	.96
I 70	4.7 MILES E. OF K 30 INTCHG. (MAPLE HILL)	WABAUNSEE		21,369	21,700		1.5	2,725	10-11 AM	SAT	4	29,782	SAT	4	21,700	20,479	1.06

Percent of Change for District 1 Stations

9.9 3.6

Rural State Highways for District 2

K 9	5.8 MILES E. OF CLIFTON	CLAY	346	344	323	- 6.6	- 6.1	91	6-7 PM	FRI	3	496	FRI	3	323	356	.91
K 15	3.3 MILES N. OF CLAY CENTER	CLAY	2,008	1,971	2,044	1.8	3.7	249	5-6 PM	FRI	17	2,526	FRI	3	2,044	2,132	.96
I 70	W. OF K-232 INTCHG. (WILSON)	ELLSWORTH	9,942		10,799	8.6		1,416	3-4 PM	MON	6	16,089	FRI	3	10,799	10,641	1.01
K 141	2.8 MILES S. OF KANOPOLIS DAM	ELLSWORTH	515	584	615	19.4	5.3	151	11-12 AM	MON	6	1,367	SUN	5	615	528	1.16
K 18	1.8 MILES W. OF JUNCTION CITY	GEARY	1,284	1,210	1,498	16.7	23.8	222	7-8 AM	FRI	17	1,821	FRI	3	1,498	1,586	.94
I 70	4.5 MILES S.W. OF JUNCTION CITY	GEARY	16,328	17,464	18,082	10.7	3.5	2,092	11-12 AM	SAT	4	24,141	FRI	3	18,082	17,648	1.02
US 77	4 MILES S. OF JUNCTION CITY	GEARY	3,685	3,915	4,496	22.0	14.8	696	9-10 AM	SAT	25	6,226	SAT	4	4,496	4,394	1.02
US 36	1 MILE E. OF MANKATO	JEWELL	1,847	1,965	2,033	10.1	3.5	258	3-4 PM	FRI	17	2,813	FRI	17	2,033	2,144	.95
K 18	0.5 MILES W. OF LINCOLN	LINCOLN	993	1,038	1,052	5.9	1.3	119	4-5 PM	THU	2	1,378	FRI	10	1,052	1,116	.94
I 135	0.5 MILES N. OF US 56 INTCHG. (MCPHERSON)	MCPHERSON	12,142		12,179	0.3		1,518	5-6 PM	FRI	3	17,568	FRI	3	12,179	11,857	1.03
K 14	3 MILES S. OF BELOIT	MITCHELL	752	878	867	15.3	- 1.3	121	6-7 PM	FRI	10	1,136	FRI	10	867	953	.91
US 81	2.5 MILES S. OF BELLEVILLE	REPUBLIC	4,627	4,860	5,152	11.3	6.0	575	4-5 PM	FRI	3	7,100	FRI	3	5,152	5,222	.99

Percent of Change for District 2 Stations

8.6 5.6

Rural State Highways for District 3

US 83	6.2 MILES S. OF OAKLEY	LOGAN	1,605	1,772	1,928	20.1	8.8	215	5-6 PM	FRI	24	2,386	FRI	24	1,928	2,050	.94
US 36	9.5 MILES W. OF NORTON	NORTON	936		1,084	15.8		133	6-7 PM	FRI	24	1,403	FRI	3	1,084	1,140	.95
US 183	1.2 MILES S. OF PHILLIPSBURG	PHILLIPS	2,286	2,409	2,387	4.4	- 0.9	289	6-7 PM	FRI	3	3,118	FRI	3	2,387	2,530	.94
K 23	14.5 MILES S. OF HOXIE	SHERIDAN	763	809	809	6.0	0.0	128	6-7 PM	FRI	3	1,039	FRI	3	809	852	.95
I 70	2.2 MI. E OF KANORADO EXIT	SHERMAN	7,747		8,668	11.9		1,241	2-3 PM	MON	6	12,998	FRI	3	8,668	8,710	1.00
US 24	7.3 MILES E. OF COLBY	THOMAS	1,799	1,906	1,945	8.1	2.0	209	4-5 PM	FRI	3	2,492	FRI	3	1,945	2,076	.94
K 25	1.8 MILES S. OF COLBY	THOMAS	805	892	933	15.9	4.6	109	11-12 AM	FRI	24	1,197	WED	1	933	1,034	.90
I 70	1 MILE W. OF WAKEENEY	TREGO	9,046	9,363	9,883	9.3	5.6	1,304	2-3 PM	MON	6	14,352	FRI	3	9,883	9,977	.99
US 40	1.4 MILES E. OF KAN-COLO ST. LINE	WALLACE	503	548	637	26.6	16.2	103	3-4 PM	FRI	10	861	FRI	3	637	689	.92

Percent of Change for District 3 Stations

10.9 4.6

Month of September, 2010

Sparse Matrix Model

Date: 28-OCT-2010

---- Average Daily Traffic ----
for the Month

Percent Change
Month

---- Maximum Hour ----
Volume Hour DOW Day

-- Maximum Day --
Volume DOW Day

7 Day Avg
5 Day Avg
7 Day / 5 Day Avg

Route Description Location Description County

2008 2009 2010 2008 2009

Rural State Highways for District 4

US 54	3 MILES W. OF IOLA	ALLEN	2,956	3,063	3,066	3.7	0.1	376	5-6 PM	FRI	3	4,245	FRI	3	3,066	3,190	.96
US 169	1 MILE N. OF GREELEY	ANDERSON	3,303	3,384	3,295	- 0.2	- 2.6	401	5-6 PM	FRI	3	4,263	FRI	3	3,295	3,372	.98
US 69	2 MILES N. OF FT SCOTT	BOURBON	5,089		6,200	21.8		865	5-6 PM	FRI	3	8,620	FRI	3	6,200	6,107	1.02
US 166	0.5 MILES W. OF NIOTAZE	CHAUTAUQUA	2,328	2,571	2,590	11.3	0.7	329	5-6 PM	FRI	3	3,624	FRI	3	2,590	2,623	.99
I 35	2 MILES W. OF K- 131 INTCHG. N. OF LEBO	COFFEY	12,511	13,370	13,649	9.1	2.1	1,728	5-6 PM	SUN	26	17,054	FRI	24	13,649	13,041	1.05
US 59	4.3 MILES S. OF OTTAWA	FRANKLIN	5,751	6,135	6,132	6.6	0.0	710	4-5 PM	FRI	3	7,855	FRI	3	6,132	6,209	.99
I 35	2 MILES N.E. OF THE WELLSVILLE INTCHG.	FRANKLIN	17,865	19,085	19,904	11.4	4.3	2,341	5-6 PM	FRI	3	26,822	FRI	3	19,904	20,159	.99
US 400	3 MILES E. OF PARSONS	LABETTE	3,356	3,826	3,835	14.3	0.2	546	5-6 PM	FRI	3	6,091	FRI	3	3,835	3,930	.98
US 59	4 MILES S. OF ERIE	NEOSHO	3,214	3,079	3,104	- 3.4	0.8	340	4-5 PM	FRI	3	4,055	FRI	17	3,104	3,345	.93
US 169	1 MILE N. OF THAYER	NEOSHO	4,303	4,295	4,267	- 0.8	- 0.7	589	5-6 PM	FRI	3	6,329	FRI	3	4,267	4,443	.96
US 75	1 MILE N. OF YATES CENTER	WOODSON	2,569	2,758	2,774	8.0	0.6	347	5-6 PM	FRI	10	3,667	FRI	17	2,774	2,774	1.00
K 105	2 MILES N. OF TORONTO	WOODSON	630	698	734	16.5	5.2	122	12-1 PM	SUN	5	1,085	SAT	4	734	732	1.00

8.9 1.7

Percent of Change for District 4 Stations

Rural State Highways for District 5

US 56	5.5 MILES E. OF GREAT BEND	BARTON	5,023	5,191	5,491	9.3	5.8	574	5-6 PM	FRI	17	6,705	FRI	17	5,491	5,728	.96
US 77	2 MILES N. OF EL DORADO	BUTLER	2,578	2,780	3,052	18.4	9.8	477	9-10 AM	WED	15	3,656	FRI	17	3,052	2,998	1.02
US 400	1.5 MILES E. OF LEON	BUTLER	4,292	4,862	4,758	10.9	- 2.1	634	5-6 PM	FRI	3	6,900	FRI	3	4,758	4,781	1.00
US 77	3.7 MILES N. OF ARKANSAS CITY	COWLEY	11,268	10,880	11,692	3.8	7.5	1,177	3-4 PM	THU	16	14,096	FRI	17	11,692	12,370	.95
US 160	6.2 MILES E. OF ATTICA	HARPER	1,434	1,442													
US 50	3 MILES N.E. OF NEWTON	HARVEY	6,219	6,565	6,807	9.5	3.7	762	12-1 PM	SAT	18	9,579	SAT	18	6,807	6,664	1.02
US 54	5.8 MILES W. OF KINGMAN	KINGMAN	4,434	4,945	5,089	14.8	2.9	545	3-4 PM	WED	22	6,611	FRI	3	5,089	5,200	.98
US 54	1.5 MILES W. OF HAVILAND	KIOWA	5,006	5,108	5,195	3.8	1.7	500	5-6 PM	FRI	3	6,440	FRI	3	5,195	5,325	.98
US 183	7 MILES S. OF GREENSBURG	KIOWA	964	968	935	- 3.0	- 3.4	114	3-4 PM	FRI	3	1,216	FRI	3	935	1,006	.93
US 56	5 MILES S.W. OF LARNED	PAWNEE	1,983	2,114	2,221	12.0	5.1	243	4-5 PM	FRI	3	2,914	FRI	3	2,221	2,308	.96
K 61	5 MILES S.W. OF ARLINGTON	RENO	2,156	2,183	2,212	2.6	1.3	224	5-6 PM	FRI	3	2,854	SAT	18	2,212	2,191	1.01
K 14	1 MILE N. OF LYONS	RICE	1,520	1,679	1,620	6.6	- 3.5	183	4-5 PM	FRI	3	2,002	FRI	17	1,620	1,632	.99
K 42	3 MILES N.E. OF VIOLA	SEDGWICK	4,128	4,135	4,272	3.5	3.3	481	4-5 PM	THU	9	5,188	FRI	3	4,272	4,536	.94
US 281	0.5 MILES S. OF ST. JOHN	STAFFORD	2,368	2,452	2,580	9.0	5.2	270	3-4 PM	THU	16	3,207	FRI	24	2,580	2,785	.93
US 81	4.1 MILES S. OF WELLINGTON	SUMNER	1,791	1,890	1,840	2.7	- 2.6	198	5-6 PM	WED	1	2,176	FRI	3	1,840	1,935	.95

7.9 3.8

Percent of Change for District 5 Stations

Rural State Highways for District 6

US 83	8.2 MILES S. OF GARDEN CITY	FINNEY	3,872	4,002	4,264	10.1	6.5	438	4-5 PM	WED	29	4,798	THU	23	4,264	4,515	.94
US 50	3.3 MILES W. OF DODGE CITY	FORD	5,645	5,866													
K 25	2.5 MILES N. OF ULYSSES	GRANT	1,491	1,585	1,540	3.3	- 2.8	251	11-12 AM	SAT	11	1,830	WED	1	1,540	1,648	.93
K 27	15 MILES N OF TRIBUNE	GREELEY	604	631	718	18.9	13.8	95	12-1 PM	THU	2	992	THU	2	718	801	.90
US 50	0.8 MILES E. OF KAN-COLO ST. LINE	HAMILTON	1,594	1,701	1,773	11.2	4.2	201	6-7 PM	SUN	26	2,190	FRI	17	1,773	1,779	1.00
US 283	8.3 MILES N. OF JETMORE	HODGEMAN	792	851	931	17.6	9.4	94	2-3 PM	SAT	18	1,065	FRI	24	931	1,018	.91
US 54	3.7 MILES W. OF MEADE	MEADE	3,348		3,618	8.1		345	6-7 PM	FRI	17	4,124	FRI	3	3,618	3,716	.97
K 96	12 MILES W. OF SCOTT CITY	WICHITA	1,182	1,275	1,326	12.2	4.0	147	5-6 PM	FRI	24	1,635	FRI	24	1,326	1,410	.94

10.0 5.0

Percent of Change for District 6 Stations

Month of September, 2010

Sparse Matrix Model

Date: 28-OCT-2010

--- Average Daily Traffic ---
for the Month
2008 2009 2010
Percent Change
Month
2008 2009

--- Maximum Hour ---
Volume Hour DOW Day
--- Maximum Day ---
Volume DOW Day
7 Day Avg
5 Day Avg
7 Day / 5 Day Avg

Route Description Location Description County

Rural Secondary Stations

RS 61	6.5 MILES S.W. OF HIAWATHA	BROWN	275	302	286	4.0	- 5.3	64	11-12 AM	SAT	25	444	SAT	25	286	290	.99
RS 463	0.7 MILES S.W. OF BELOIT	MITCHELL	243	271	283	16.5	4.4	59	5-6 PM	THU	30	472	THU	30	283	309	.92
RS 272	2 MILES S. OF QUINTER	GOVE	407	425	440	8.1	3.5	97	3-4 PM	FRI	10	816	FRI	10	440	466	.94
RS 13	0.5 MILES N. OF BUSH CITY	ANDERSON	328	336	366	11.6	8.9	49	12-1 PM	SAT	4	479	FRI	24	366	389	.94
RS 18	3 MILES E. OF PARSONS	LABETTE	1,705	1,950	1,926	13.0	- 1.2	230	5-6 PM	TUE	21	2,406	FRI	3	1,926	2,080	.93
RS 303	0.8 MI. S. OF US-54 & K17 JCT. (MIDWAY)	KINGMAN	360	392	361	0.3	- 7.9	44	3-4 PM	SUN	19	437	SAT	18	361	356	1.01
RS 251	6 MILES W. OF FORD	FORD	424	629	466	9.9	- 25.9	95	6-7 PM	FRI	3	835	FRI	3	466	483	.96

Percent of Change for Rural Secondary Stations

10.3 - 4.1

Reservoir Stations

K 237	1.5 MILES N. OF JCT. US 24	JEFFERSON	1,189	1,395	1,612	35.6	15.6	228	5-6 PM	FRI	3	2,699	SUN	5	1,612	1,500	1.07
LOCAL ROAD	KANOPOLIS RESERVOIR N. OF DAM	ELLSWORTH	187	166	322	72.2	94.0					468	SUN	19	322	322	1.00
LOCAL ROAD	KANOPOLIS RESERVOIR S. OF DAM	ELLSWORTH	240	361	330	37.5	- 8.6					897	SUN	5	330	246	1.34
LOCAL ROAD	CEDAR BLUFF RESERVOIR N. OF DAM	TREGO	57	104	63	10.5	- 39.4					316	SUN	5	63	43	1.47

Percent of Change for Reservoir Stations

39.1 14.9

Kansas City Stations

I 35	0.5 MILES S.W. OF 87TH ST INTCHG.	JOHNSON			95,101			8,787	7-8 AM	WED	1	109,637	FRI	24	95,101	104,688	.91
US 69	0.8 MILES N. OF 167TH ST	JOHNSON	25,376	26,564	27,167	7.1	2.3	3,047	4-5 PM	FRI	3	32,737	FRI	3	27,167	28,661	.95
135TH	135TH E. OF MUR-LEN	JOHNSON	32,752	33,680	37,575	14.7	11.6	3,601	5-6 PM	WED	29	43,488	FRI	17	37,575	39,113	.96
BLACKBOB	BLACKBOB RD. S. OF 139TH	JOHNSON	22,243	22,590	21,783	- 2.1	- 3.6	2,185	5-6 PM	THU	16	24,749	FRI	3	21,783	22,219	.98
I 435	0.8 MILES S. OF I - 70	WYANDOTTE	59,611	59,699	61,085	2.5	2.3	7,108	5-6 PM	THU	30	74,847	FRI	3	61,085	64,697	.94

Percent of Change for Kansas City Stations

5.4 3.6

Salina Stations

OHIO ST.	OHIO ST. N. OF WESTCHESTER DR.	SALINE	17,347	17,808	17,687	2.0	- 0.7	1,751	2-3 PM	FRI	3	21,077	FRI	3	17,687	19,298	.92
----------	--------------------------------	--------	--------	--------	--------	-----	-------	-------	--------	-----	---	--------	-----	---	--------	--------	-----

Percent of Change for Salina Stations

2.0 - .7

Topeka Stations

WANAMAKER	WANAMAKER RD. N. OF 33RD ST.	SHAWNEE	9,216	9,702	11,643	26.3	20.0	1,248	5-6 PM	FRI	3	14,738	FRI	3	11,643	12,148	.96
45TH ST.	45TH ST. E. OF INDIANA	SHAWNEE	6,768	7,126	7,380	9.0	3.6	831	6-7 PM	SAT	11	8,827	SAT	11	7,380	7,430	.99
W. 10TH ST.	10TH STREET WEST OF WASHBURN	SHAWNEE	11,873	10,664	10,398	- 12.4	- 2.5	1,153	3-4 PM	FRI	24	13,153	FRI	24	10,398	11,753	.88
TYLER ST.	TYLER ST. N. OF LAURENT ST.	SHAWNEE	578	624	607	5.0	- 2.7	106	1-2 PM	FRI	3	923	FRI	3	607	756	.80
N. TOPEKA	TOPEKA BLVD. NORTH OF PARAMORE ST.	SHAWNEE	18,577	18,095	18,890	1.7	4.4	3,028	2-3 PM	SAT	11	23,853	FRI	24	18,890	20,455	.92
I 70	I 70 E. OF MACVICAR ST.	SHAWNEE	43,588	46,521	47,091	8.0	1.2	5,185	4-5 PM	FRI	17	59,599	FRI	3	47,091	50,146	.94
I 470	I 470 N.W. OF HUNTOON	SHAWNEE	33,683	32,761	33,575	- 0.3	2.5	3,814	4-5 PM	FRI	17	41,521	FRI	17	33,575	35,641	.94
US 40	US 40 E. OF TECUMSEH RD.	SHAWNEE	5,135	4,914	5,108	- 0.5	3.9	734	5-6 PM	WED	8	6,123	FRI	10	5,108	5,600	.91
US 75	US 75 N. OF S.W. 57TH	SHAWNEE	14,116	14,504													

Percent of Change for Topeka Stations

4.1 3.3

Month of September, 2010

Sparse Matrix Model

Date: 28-OCT-2010

---- Average Daily Traffic ----			Percent Change		---- Maximum Hour ----			-- Maximum Day --			7 Day	5 Day	7 Day /	
for the Month			Month		Volume	Hour	DOW	Day	Volume	DOW	Day	Avg	Avg	5 Day
2008	2009	2010	2008	2009										Avg

Route Description	Location Description	County
-------------------	----------------------	--------

Wichita Stations

K 96	K-96 E. OF GREENWICH RD.	SEDGWICK	22,656	23,238	23,326	3.0	0.4	2,766	5-6 PM	MON	27	27,941	FRI	24	23,326	25,554	.91
US 54	KELLOGG E. OF WEST ST.	SEDGWICK	88,270														
13TH ST.	13TH ST W. OF PINECREST	SEDGWICK	16,274	17,014	16,814	3.3	- 1.2	1,897	5-6 PM	THU	30	20,051	FRI	3	16,814	18,335	.92
ROCK RD.	ROCK RD. S. OF CENTRAL AVE	SEDGWICK		30,972	31,735		2.5	3,061	3-4 PM	FRI	24	38,395	FRI	24	31,735	32,986	.96
21ST ST.	21ST ST E. OF WASHINGTON	SEDGWICK	13,911	13,923	8,109	- 41.7	- 41.8	875	4-5 PM	TUE	28	9,857	FRI	24	8,109	8,932	.91
HILLSIDE ST.	HILLSIDE S. OF 15TH ST	SEDGWICK	12,895	14,255	12,534	- 2.8	- 12.1	1,240	3-4 PM	WED	1	15,559	WED	1	12,534	14,172	.88
I 235	I 235 S. OF MAPLE ST	SEDGWICK	48,212	50,373	49,020	1.7	- 2.7	5,121	4-5 PM	FRI	10	58,896	FRI	10	49,020	53,067	.92
I 135	I-135 N. OF 21ST ST.	SEDGWICK	65,440	61,024	61,837	- 5.5	1.3	6,456	5-6 PM	WED	22	75,244	FRI	3	61,837	69,561	.89

Percent of Change for Wichita Stations

- 4.3 - 3.5

NOTE: * Excluded from Percent Change Totals