

**KANSAS DEPARTMENT OF TRANSPORTATION  
BUREAU OF TRANSPORTATION PLANNING**

**SEPTEMBER 2008**

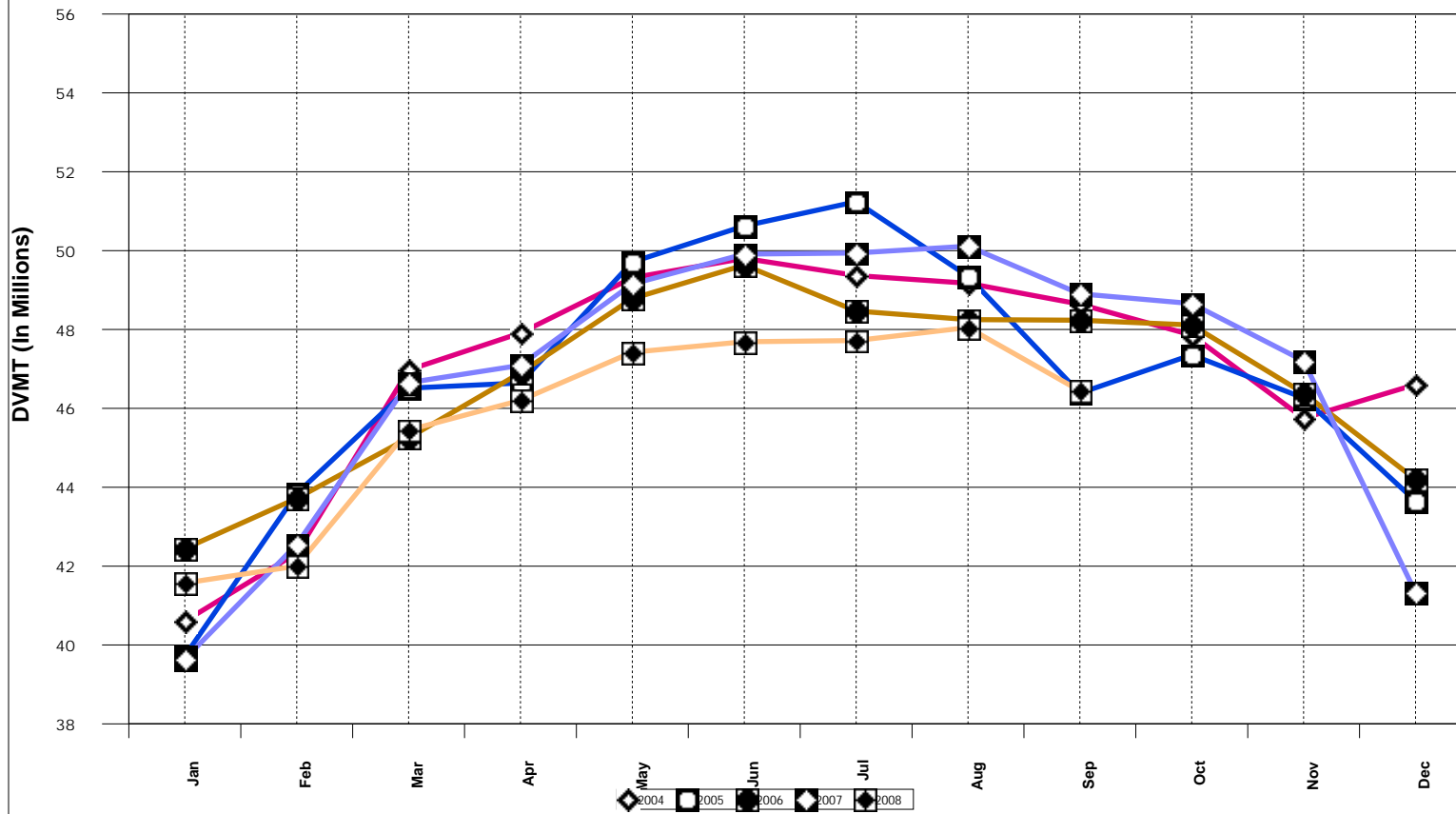
**SIGNIFICANT FACTS AND TRENDS**



Travel on the Kansas State Highway System				
Month	Daily Vehicle Miles		% Change	
	(In Millions )		2007 to 2008	
	2007	2008	Month	Year
Jan	39.644	41.571	4.9	4.9
Feb	42.551	42.002	- 1.3	1.7
Mar	46.653	45.45	- 2.6	0.1
Apr	47.094	46.205	- 1.9	- 0.4
May	49.156	47.424	- 3.5	- 1.1
Jun	49.912	47.69	- 4.5	- 1.7
Jul	49.941	47.721	- 4.4	- 2.1
Aug	50.113	48.049	- 4.1	- 2.4
Sep	48.904	46.447	- 5.0	- 2.7
Oct	48.658			
Nov	47.206			
Dec	41.329			
Average	46.763			

**Contact the Traffic and Field Operations Unit with questions or requests at:  
(785)-296-3841 or E-mail: [TrafficCounts@ksdot.org](mailto:TrafficCounts@ksdot.org)  
The Monthly Average Daily Traffic (MADT) is Calculated Utilizing the  
Day-Of-Week (DOW) Method. Missing Traffic Count Data will Not be Estimated  
Therefore Station Summary Data will be Blank where Data is Not Available.**

### Total Travel on Kansas State Highway System



Date: 20-OCT-2008

Month of September, 2008

Sparse Matrix Model

Route Description	Location Description	County	Average Daily Traffic for the Month			Percent Change Month		Maximum Hour				Maximum Day			7 Day Avg	5 Day Avg	7 Day / 5 Day Avg
			2006	2007	2008	2006	2007	Volume	Hour	DOW	Day	Volume	DOW	Day			
			<b>Rural State Highways for District 1</b>														
US-75	1.2 MILES N. OF US-36 I.C.	BROWN	3,375	3,620	3,447	2.1	- 4.8	357	6-7 PM	FRI	26	4,444	FRI	26	3,447	3,559	.97
US 24	1.5 MILES N.E. OF LAWRENCE	DOUGLAS	8,081	8,102	7,637	- 5.5	- 5.7	897	5-6 PM	FRI	19	9,442	SAT	27	7,637	7,786	.98
US 56	4 MILES E. OF OVERBROOK	DOUGLAS	1,914	1,924	1,814	- 5.2	- 5.7	233	3-4 PM	SAT	20	2,719	SAT	20	1,814	1,745	1.04
US 75	5.8 MILES N. OF HOLTON	JACKSON	6,128	6,567	5,975	- 2.5	- 9.0	653	5-6 PM	FRI	19	7,287	FRI	26	5,975	5,989	1.00
K 10	0.2 MILES E. OF RS. 346 INTCHG.	JOHNSON	32,898	33,248	31,261	- 5.0	- 6.0	3,461	5-6 PM	FRI	26	37,868	FRI	19	31,261	32,323	.97
K 99	2.9 MILES S. OF EMPORIA	LYON	4,272	4,437	3,755	- 12.1	- 15.4	466	5-6 PM	WED	17	4,826	FRI	19	3,755	3,873	.97
US 36	13 MILES E. OF MARYSVILLE	MARSHALL	2,602	2,844	2,482	- 4.6	- 12.7	292	4-5 PM	FRI	19	3,151	FRI	19	2,482	2,557	.97
K 68	0.15 MILES E. OF JCT K 268	OSAGE	3,095	3,115	2,757	- 10.9	- 11.5	338	5-6 PM	FRI	26	3,758	SAT	20	2,757	2,717	1.01
K 268	0.1 MILES E. OF US 75	OSAGE	3,159	3,180	2,772	- 12.3	- 12.8	303	5-6 PM	FRI	19	3,366	FRI	19	2,772	2,783	1.00
K 18	0.7 MILES N.E. OF OGDEN	RILEY	21,828		23,035	5.5		2,591	4-5 PM	FRI	26	28,106	FRI	26	23,035	24,389	.94
US 24	4 MILES N. OF MANHATTAN	RILEY	7,062	7,108	6,677	- 5.5	- 6.1	805	6-7 PM	SAT	27	8,046	FRI	26	6,677	6,609	1.01
K 4	1MI. S. OF JCT. US-24	SHAWNEE	8,928	9,439	8,394	- 6.0	- 11.1	1,126	7-8 AM	TUE	30	10,186	FRI	26	8,394	8,998	.93
US 24	1 MILE N.W. OF ROSSVILLE	SHAWNEE	4,874	4,969	5,089	4.4	2.4	742	5-6 PM	THU	4	6,369	FRI	5	5,089	5,415	.94
I 70	4.7 MILES E. OF K 30 INTCHG. (MAPLE HILL)	WABAUNSEE	20,829	20,833													

Percent of Change for District 1 Stations

- 2.9 - 7.3

Rural State Highways for District 2

K 9	5.8 MILES E. OF CLIFTON	CLAY	375	362	346	- 7.7	- 4.4	77	6-7 PM	FRI	26	493	FRI	26	346	383	.90
K 15	3.3 MILES N. OF CLAY CENTER	CLAY	1,885	2,114	2,008	6.5	- 5.0	248	5-6 PM	FRI	19	2,406	FRI	19	2,008	2,089	.96
I 70	W. OF K-232 INTCHG. (WILSON)	ELLSWORTH	10,679	10,809	9,942	- 6.9	- 8.0	1,249	3-4 PM	MON	1	13,524	MON	1	9,942	9,698	1.03
K 141	2.8 MILES S. OF KANOPOLIS DAM	ELLSWORTH	469	611	515	9.8	- 15.7	153	2-3 PM	SUN	21	1,270	MON	1	515	481	1.07
K 18	1.8 MILES W. OF JUNCTION CITY	GEARY	1,333	1,348	1,284	- 3.7	- 4.7	164	7-8 AM	TUE	23	1,501	FRI	19	1,284	1,362	.94
I 70	4.5 MILES S.W. OF JUNCTION CITY	GEARY	17,098	17,067	16,328	- 4.5	- 4.3	1,859	4-5 PM	FRI	26	20,629	FRI	26	16,328	16,024	1.02
US 77	4 MILES S. OF JUNCTION CITY	GEARY	3,469	3,682	3,685	6.2	0.1	477	5-6 PM	FRI	19	4,958	SAT	27	3,685	3,677	1.00
US 36	1 MILE E. OF MANKATO	JEWELL	1,884	1,932	1,847	- 2.0	- 4.4	206	1-2 PM	THU	18	2,387	THU	18	1,847	1,955	.94
K 18	0.5 MILES W. OF LINCOLN	LINCOLN	1,001	1,048	993	- 0.8	- 5.2	134	4-5 PM	THU	18	1,299	FRI	19	993	1,065	.93
I 135	0.5 MILES N. OF US 56 INTCHG. (MCPHERSON)	MCPHERSON	12,699	13,027	12,142	- 4.4	- 6.8	1,304	4-5 PM	FRI	26	14,720	FRI	26	12,142	11,954	1.02
K 14	3 MILES S. OF BELOIT	MITCHELL	839	795	752	- 10.4	- 5.4	107	5-6 PM	FRI	26	1,032	FRI	26	752	806	.93
US 81	2.5 MILES S. OF BELLEVILLE	REPUBLIC	4,766	4,843	4,627	- 2.9	- 4.5	476	2-3 PM	MON	1	5,632	FRI	19	4,627	4,722	.98

Percent of Change for District 2 Stations

- 3.6 - 5.5

Rural State Highways for District 3

US 83	6.2 MILES S. OF OAKLEY	LOGAN	1,614	1,611	1,605	- 0.6	- 0.4	152	9-10 AM	SAT	27	1,854	FRI	26	1,605	1,695	.95
US 36	9.5 MILES W. OF NORTON	NORTON	1,243	1,017	936	- 24.7	- 8.0	117	5-6 PM	FRI	19	1,207	FRI	19	936	1,001	.94
US 183	1.2 MILES S. OF PHILLIPSBURG	PHILLIPS	2,452	2,425	2,286	- 6.8	- 5.7	285	5-6 PM	FRI	19	2,866	FRI	5	2,286	2,442	.94
K 23	14.5 MILES S. OF HOXIE	SHERIDAN	819	858	763	- 6.8	- 11.1	92	6-7 PM	FRI	5	964	FRI	5	763	800	.95
I 70	2.2 MI. E OF KANORADO EXIT	SHERMAN	8,557	8,290	7,747	- 9.5	- 6.6	1,028	3-4 PM	MON	1	10,970	MON	1	7,747	7,704	1.01
US 24	7.3 MILES E. OF COLBY	THOMAS	1,714	1,919	1,799	5.0	- 6.3	198	6-7 PM	FRI	19	2,311	FRI	26	1,799	1,937	.93
K 25	1.8 MILES S. OF COLBY	THOMAS	804	884	805	0.1	- 8.9	95	5-6 PM	MON	15	989	MON	15	805	886	.91
I 70	1 MILE W. OF WAKEENEY	TREGON	9,642	9,745	9,046	- 6.2	- 7.2	1,188	2-3 PM	MON	1	11,947	MON	1	9,046	9,074	1.00
US 40	1.4 MILES E. OF KAN-COLO ST. LINE	WALLACE	484	542	503	3.9	- 7.2	68	4-5 PM	FRI	5	668	THU	25	503	540	.93

Percent of Change for District 3 Stations

- 6.7 - 6.6

Date: 20-OCT-2008

Month of September, 2008

Sparse Matrix Model

Route Description	Location Description	County	Average Daily Traffic for the Month			Percent Change Month		Maximum Hour				Maximum Day			7 Day Avg	5 Day Avg	7 Day / 5 Day Avg
			2006	2007	2008	2006	2007	Volume	Hour	DOW	Day	Volume	DOW	Day			

Rural State Highways for District 4

US 54	3 MILES W. OF IOLA	ALLEN	3,101	3,150	2,956	- 4.7	- 6.2	305	4-5 PM	FRI	26	3,794	FRI	26	2,956	3,071	.96
US 169	1 MILE N. OF GREELEY	ANDERSON	3,306		3,303	- 0.1		370	5-6 PM	FRI	26	4,187	FRI	26	3,303	3,439	.96
US 69	2 MILES N. OF FT SCOTT	BOURBON		5,407	5,089		- 5.9	604	4-5 PM	FRI	26	6,439	FRI	26	5,089	5,119	.99
US 166	0.5 MILES W. OF NIOTAZE	CHAUTAUQUA	2,592	2,513	2,328	- 10.2	- 7.4	261	5-6 PM	FRI	19	3,008	FRI	19	2,328	2,384	.98
I 35	2 MILES W. OF K- 131 INTCHG. N. OF LEBO	COFFEY	13,526	13,641	12,511	- 7.5	- 8.3	1,639	5-6 PM	SUN	28	15,869	SUN	28	12,511	12,234	1.02
US 59	4.3 MILES S. OF OTTAWA	FRANKLIN	6,050	6,071	5,751	- 4.9	- 5.3	665	4-5 PM	FRI	26	6,975	FRI	26	5,751	5,832	.99
I 35	2 MILES N.E. OF THE WELLSVILLE INTCHG.	FRANKLIN	20,516	22,292	17,865	- 12.9	- 19.9	1,868	4-5 PM	FRI	19	21,634	FRI	19	17,865	17,975	.99
US 400	3 MILES E. OF PARSONS	LABETTE	3,774	3,810	3,356	- 11.1	- 11.9	464	4-5 PM	MON	1	4,480	MON	1	3,356	3,448	.97
US 59	4 MILES S. OF ERIE	NEOSHO	3,124	3,521	3,214	- 2.9	- 8.7	375	5-6 PM	FRI	26	4,170	FRI	26	3,214	3,519	.91
US 169	1 MILE N. OF THAYER	NEOSHO	4,442	4,477	4,303	- 3.1	- 3.9	505	5-6 PM	FRI	26	5,710	FRI	26	4,303	4,546	.95
US 75	1 MILE N. OF YATES CENTER	WOODSON		2,810	2,569		- 8.6	311	5-6 PM	FRI	26	3,398	FRI	26	2,569	2,612	.98
K 105	2 MILES N. OF TORONTO	WOODSON	697	726	630	- 9.6	- 13.2	87	1-2 PM	MON	1	915	MON	1	630	637	.99

Percent of Change for District 4 Stations

- 8.0 - 11.5

Rural State Highways for District 5

US 56	5.5 MILES E. OF GREAT BEND	BARTON	5,144	5,382	5,023	- 2.4	- 6.7	550	5-6 PM	FRI	12	6,030	FRI	26	5,023	5,231	.96
US 77	2 MILES N. OF EL DORADO	BUTLER	2,526	2,694	2,578	- 2.1	- 4.3	390	12-1 PM	SUN	21	3,379	FRI	19	2,578	2,519	1.02
US 400	1.5 MILES E. OF LEON	BUTLER	4,558	4,660	4,292	- 5.8	- 7.9	479	3-4 PM	FRI	19	5,793	FRI	19	4,292	4,295	1.00
US 77	3.7 MILES N. OF ARKANSAS CITY	COWLEY	11,560	11,496	11,268	- 2.5	- 2.0	1,144	3-4 PM	FRI	5	13,588	FRI	19	11,268	11,935	.94
US 160	6.2 MILES E. OF ATTICA	HARPER	1,680	1,452	1,434	- 14.6	- 1.2	177	5-6 PM	FRI	26	1,910	FRI	26	1,434	1,533	.94
US 50	3 MILES N.E. OF NEWTON	HARVEY	6,406	6,596	6,219	- 2.9	- 5.7	778	1-2 PM	SAT	20	9,210	SAT	20	6,219	6,164	1.01
US 54	5.8 MILES W. OF KINGMAN	KINGMAN	4,574	4,762	4,434	- 3.1	- 6.9	424	5-6 PM	FRI	5	5,463	FRI	19	4,434	4,490	.99
US 54	1.5 MILES W. OF HAVILAND	KIOWA			5,006		*	462	5-6 PM	FRI	19	5,983	FRI	19	5,006	5,203	.96
US 183	7 MILES S. OF GREENSBURG	KIOWA	911	919	964	5.8	4.9	103	5-6 PM	FRI	19	1,187	FRI	26	964	1,040	.93
US 56	5 MILES S.W. OF LARNED	PAWNEE	1,960	1,853	1,983	- 1.2	7.0	216	5-6 PM	FRI	26	2,436	FRI	26	1,983	2,074	.96
K 61	5 MILES S.W. OF ARLINGTON	RENO	2,238	2,267	2,156	- 3.7	- 4.9	210	4-5 PM	FRI	5	2,704	SAT	13	2,156	2,160	1.00
K 14	1 MILE N. OF LYONS	RICE	1,510	1,587	1,520	0.7	- 4.2	174	5-6 PM	FRI	12	1,795	FRI	12	1,520	1,564	.97
K 42	3 MILES N.E. OF VIOLA	SEDGWICK	4,479	4,400	4,128	- 7.8	- 6.2	483	5-6 PM	FRI	19	5,195	FRI	19	4,128	4,441	.93
US 281	0.5 MILES S. OF ST. JOHN	STAFFORD	2,339	2,537	2,368	1.2	- 6.7	245	5-6 PM	FRI	5	2,833	FRI	26	2,368	2,546	.93
US 81	4.1 MILES S. OF WELLINGTON	SUMNER	1,834	1,833	1,791	- 2.3	- 2.3	185	3-4 PM	TUE	30	2,093	FRI	19	1,791	1,889	.95

Percent of Change for District 5 Stations

- 3.0 - 4.3

Rural State Highways for District 6

US 83	8.2 MILES S. OF GARDEN CITY	FINNEY	3,733	4,026	3,872	3.7	- 3.8	356	5-6 PM	FRI	12	4,391	THU	11	3,872	4,121	.94
US 50	3.3 MILES W. OF DODGE CITY	FORD	5,541	5,705	5,645	1.9	- 1.1	575	5-6 PM	WED	17	6,897	FRI	19	5,645	5,989	.94
K 25	2.5 MILES N. OF ULYSSES	GRANT	1,580	1,647	1,491	- 5.6	- 9.5	163	4-5 PM	TUE	23	1,883	FRI	5	1,491	1,624	.92
K 27	15 MILES N OF TRIBUNE	GREELEY	630	704	604	- 4.1	- 14.2	82	4-5 PM	FRI	19	888	FRI	19	604	662	.91
US 50	0.8 MILES E. OF KAN-COLO ST. LINE	HAMILTON	1,768	1,850	1,594	- 9.8	- 13.8	214	3-4 PM	MON	1	2,193	MON	1	1,594	1,619	.98
US 283	8.3 MILES N. OF JETMORE	HODGEMAN	635	822	792	24.7	- 3.6	92	11-12 AM	WED	24	991	FRI	26	792	874	.91
US 54	3.7 MILES W. OF MEADE	MEADE	3,160	3,349	3,348	5.9	0.0	309	4-5 PM	FRI	19	3,971	FRI	19	3,348	3,439	.97
K 96	12 MILES W. OF SCOTT CITY	WICHITA	1,198	1,206	1,182	- 1.3	- 2.0	125	4-5 PM	THU	18	1,398	FRI	5	1,182	1,272	.93

Percent of Change for District 6 Stations

1.6 - 4.0

Date: 20-OCT-2008

Month of September, 2008

Sparse Matrix Model

Route Description	Location Description	County	Average Daily Traffic for the Month			Percent Change Month		Maximum Hour				Maximum Day			7 Day Avg	5 Day Avg	7 Day / 5 Day Avg
			2006	2007	2008	2006	2007	Volume	Hour	DOW	Day	Volume	DOW	Day			

Rural Secondary Stations

RS 61	6.5 MILES S.W. OF HIAWATHA	BROWN	209	238	275	31.6	15.5	41	3-4 PM	TUE	16	371	WED	24	275	295	.93
RS 463	0.7 MILES S.W. OF BELOIT	MITCHELL	271	242	243	- 10.3	0.4	39	4-5 PM	TUE	30	379	TUE	30	243	266	.91
RS 272	2 MILES S. OF QUINTER	GOVE	373	392	407	9.1	3.8	73	9-10 AM	THU	25	739	THU	25	407	432	.94
RS 13	0.5 MILES N. OF BUSH CITY	ANDERSON	346	362	328	- 5.2	- 9.4	39	5-6 PM	MON	29	392	TUE	23	328	339	.97
RS 18	3 MILES E. OF PARSONS	LABETTE	2,050	2,071	1,705	- 16.8	- 17.7	210	5-6 PM	FRI	19	2,037	FRI	26	1,705	1,843	.93
RS 303	0.8 MI. S. OF US-54 & K17 JCT. (MIDWAY)	KINGMAN	390	355	360	- 7.7	1.4	62	12-1 PM	SUN	14	449	SUN	14	360	361	1.00
RS 251	6 MILES W. OF FORD	FORD	440	446	424	- 3.6	- 4.9	63	5-6 PM	FRI	26	577	FRI	19	424	440	.96

Percent of Change for Rural Secondary Stations

- 8.3 - 8.9

Reservoir Stations

K 237	1.5 MILES N. OF JCT. US 24	JEFFERSON	1,316	1,417	1,189	- 9.7	- 16.1	213	12-1 PM	MON	1	2,082	MON	1	1,189	1,137	1.05
LOCAL ROAD	KANOPOLIS RESERVOIR N. OF DAM	ELLSWORTH	166	177	187	12.7	5.6					716	MON	1	187	153	1.22
LOCAL ROAD	KANOPOLIS RESERVOIR S. OF DAM	ELLSWORTH	214	290	240	12.1	- 17.2					700	SAT	20	240	197	1.22
LOCAL ROAD	CEDAR BLUFF RESERVOIR N. OF DAM	TREGO	82	104	57	- 30.5	- 45.2					215	MON	1	57	35	1.63

Percent of Change for Reservoir Stations

- 5.9 - 15.8

Kansas City Stations

I 35	0.5 MILES S.W. OF 87TH ST INTCHG.	JOHNSON															
US 69	0.8 MILES N. OF 167TH ST	JOHNSON	28,068	24,357	25,376	- 9.6	4.2	2,745	7-8 AM	TUE	2	29,249	FRI	26	25,376	25,972	.98
135TH	135TH E. OF MUR-LEN	JOHNSON	36,374	35,220	32,752	- 10.0	- 7.0	3,199	12-1 PM	SAT	20	37,986	FRI	19	32,752	33,669	.97
BLACKBOB	BLACKBOB RD. S. OF 139TH	JOHNSON	23,083	22,567	22,243	- 3.6	- 1.4	2,293	5-6 PM	FRI	26	25,202	SAT	27	22,243	22,476	.99
I 435	0.8 MILES S. OF I - 70	WYANDOTTE	63,980	64,720	59,611	- 6.8	- 7.9	7,562	5-6 PM	FRI	26	77,846	FRI	26	59,611	63,243	.94

Percent of Change for Kansas City Stations

- 7.6 - 4.7

Salina Stations

OHIO ST.	OHIO ST. N. OF WESTCHESTER DR.	SALINE	16,650	17,813	17,347	4.2	- 2.6	1,754	4-5 PM	TUE	2	20,565	FRI	26	17,347	18,877	.92
----------	--------------------------------	--------	--------	--------	--------	-----	-------	-------	--------	-----	---	--------	-----	----	--------	--------	-----

Percent of Change for Salina Stations

4.2 - 2.6

Topeka Stations

WANAMAKER	WANAMAKER RD. N. OF 33RD ST.	SHAWNEE	7,893	9,030	9,216	16.8	2.1	1,042	5-6 PM	TUE	30	11,523	FRI	26	9,216	9,581	.96
45TH ST.	45TH ST. E. OF INDIANA	SHAWNEE		7,593	6,768		- 10.9	840	6-7 PM	FRI	5	8,609	FRI	5	6,768	6,952	.97
W. 10TH ST.	10TH STREET WEST OF WASHBURN	SHAWNEE	12,306	11,943	11,873	- 3.5	- 0.6	1,324	3-4 PM	WED	3	14,605	FRI	5	11,873	13,450	.88
TYLER ST.	TYLER ST. N. OF LAURENT ST.	SHAWNEE	772	667	578	- 25.1	- 13.3	166	9-10 AM	MON	15	880	MON	15	578	705	.82
N. TOPEKA	TOPEKA BLVD. NORTH OF PARAMORE ST.	SHAWNEE	11,949	12,052	18,577	55.5	54.1	2,061	4-5 PM	FRI	26	23,192	FRI	26	18,577	20,274	.92
I 70	I 70 E. OF MACVICAR ST.	SHAWNEE	46,030	45,437	43,588	- 5.3	- 4.1	4,706	4-5 PM	FRI	19	53,525	FRI	19	43,588	46,744	.93
I 470	I 470 N.W. OF HUNTOON	SHAWNEE	36,028	36,116	33,683	- 6.5	- 6.7	3,746	5-6 PM	THU	18	40,402	FRI	19	33,683	35,727	.94
US 40	US 40 E. OF TECUMSEH RD.	SHAWNEE	4,897	4,956	5,135	4.9	3.6	738	5-6 PM	WED	24	6,107	FRI	19	5,135	5,628	.91
US 75	US 75 N. OF S.W. 57TH	SHAWNEE	14,809	14,621	14,116	- 4.7	- 3.5	1,681	7-8 AM	WED	17	17,008	FRI	19	14,116	15,134	.93

Percent of Change for Topeka Stations

1.5 .8

Date: 20-OCT-2008

Month of September, 2008

Sparse Matrix Model

Route Description	Location Description	County	Average Daily Traffic for the Month			Percent Change Month		Maximum Hour				Maximum Day			7 Day Avg	5 Day Avg	7 Day / 5 Day Avg
			2006	2007	2008	2006	2007	Volume	Hour	DOW	Day	Volume	DOW	Day			
<b>Wichita Stations</b>																	
K 96	K-96 E. OF GREENWICH RD.	SEDGWICK	22,691	24,207	22,656	- 0.2	- 6.4	2,755	7-8 AM	TUE	23	26,867	FRI	19	22,656	24,840	.91
US 54	KELLOGG E. OF WEST ST.	SEDGWICK	89,590	91,558	88,270	- 1.5	- 3.6	8,864	5-6 PM	TUE	30	106,161	FRI	26	88,270	96,892	.91
13TH ST.	13TH ST W. OF PINECREST	SEDGWICK	16,041		16,274		1.5	1,640	5-6 PM	WED	17	19,079	FRI	26	16,274	17,527	.93
ROCK RD.	ROCK RD. S. OF CENTRAL AVE	SEDGWICK	33,720	30,384													
21ST ST.	21ST ST E. OF WASHINGTON	SEDGWICK	15,469	14,714	13,911	- 10.1	- 5.5	1,389	5-6 PM	FRI	19	16,440	FRI	5	13,911	14,869	.94
HILLSIDE ST.	HILLSIDE S. OF 15TH ST	SEDGWICK	12,828		12,895		0.5	1,357	5-6 PM	WED	3	15,691	THU	4	12,895	14,457	.89
I 235	I 235 S. OF MAPLE ST	SEDGWICK	49,745	49,291	48,212	- 3.1	- 2.2	5,067	5-6 PM	WED	17	58,180	FRI	19	48,212	52,445	.92
I 135	I-135 N. OF 21ST ST.	SEDGWICK		66,053	65,440		- 0.9	7,222	7-8 AM	TUE	30	78,407	FRI	26	65,440	73,485	.89

Percent of Change for Wichita Stations

- 2.0 - 3.0

NOTE: \* Excluded from Percent Change Totals