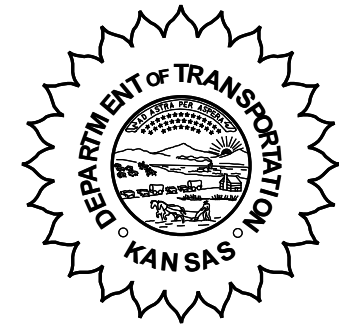


**KANSAS DEPARTMENT OF TRANSPORTATION
BUREAU OF TRANSPORTATION PLANNING**

SEPTEMBER 2006



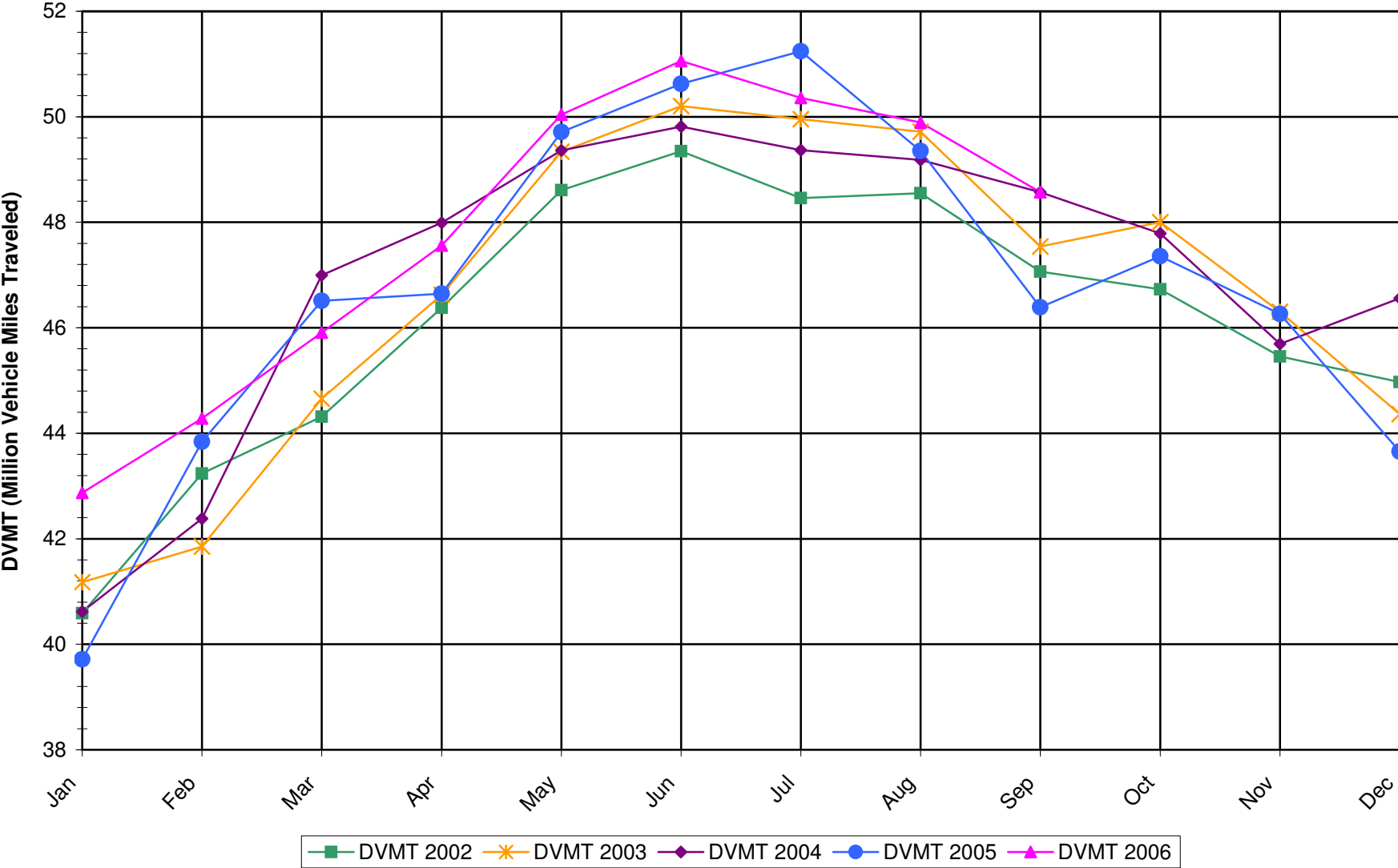
SIGNIFICANT FACTS AND TRENDS

Travel on the Kansas State Highway System				
	Daily Vehicle Miles (In Millions)		% Change 2005 to 2006	
Month	2005	2006	Month	Year
Jan	39.717	42.870	7.9	7.9
Feb	43.839	44.280	1.0	4.3
Mar	46.513	45.910	-1.3	2.3
Apr	46.645	47.560	2.0	2.2
May	49.712	50.040	0.7	1.9
Jun	50.625	51.060	0.9	1.7
Jul	51.240	50.360	-1.7	1.2
Aug	49.351	49.890	1.1	1.1
Sep	46.388	48.570	4.7	1.5
Oct	47.356			
Nov	46.264			
Dec	43.653			
Average	46.775			

*Contact the Traffic and Field Operations Unit with questions or requests at:
(785)-296-3841 or E-mail: TrafficCounts@ksdot.org*

The Monthly Average Daily Traffic (MADT) is Calculated Utilizing the Day-Of-Week (DOW) Method. Missing Traffic Count Data will Not be Estimated Therefore Station Summary Data will be Blank where Data is Not Available.

Total Travel on Kansas State Highway System 2002-2006



Date: 01-NOV-2006

Month of September, 2006

Sparse Matrix Model

Route Description	Location Description	County	Average Daily Traffic for the Month			Percent Change Month		Maximum Hour			Maximum Day			7 Day Avg	5 Day Avg	7 Day / 5 Day Avg
			2004	2005	2006	2004	2005	Volume	Hour	DOW	Day	Volume	DOW			

Rural State Highways for District 1

US-75	US-75 1.2 MILES N. OF US-36 I.C.	BROWN			3,375		*	413	5-6 PM	FRI	1	4,467	FRI	1	3,375	3,461	.98
US 24	1.5 MILES N.E. OF LAWRENCE	DOUGLAS	8,237	8,026	8,081	- 1.9	0.7	936	5-6 PM	FRI	29	10,152	SAT	30	8,081	8,284	.98
US 56	4 MILES E. OF OVERBROOK	DOUGLAS	2,013	1,793	1,914	- 4.9	6.7	222	5-6 PM	FRI	15	2,365	SAT	16	1,914	1,858	1.03
US 75	5.8 MILES N. OF HOLTON	JACKSON	6,999	6,228	6,128	- 12.4	- 1.6	649	5-6 PM	FRI	29	7,393	FRI	22	6,128	6,059	1.01
K 10	0.2 MILES E. OF RS. 346 INTCHG.	JOHNSON	34,931	31,889	32,898	- 5.8	3.2	3,506	5-6 PM	FRI	15	38,456	FRI	15	32,898	34,313	.96
K 99	2.9 MILES S. OF EMPORIA	LYON	4,687	4,229	4,272	- 8.9	1.0	501	5-6 PM	FRI	1	5,308	FRI	1	4,272	4,443	.96
US 36	13 MILES E. OF MARYSVILLE	MARSHALL	2,566		2,602	1.4		306	4-5 PM	FRI	1	3,412	FRI	1	2,602	2,622	.99
K 68	0.15 MILES E. OF JCT K 268	OSAGE	3,298	2,982	3,095	- 6.2	3.8	379	5-6 PM	MON	4	4,061	FRI	1	3,095	3,011	1.03
K 268	0.1 MILES E. OF US 75	OSAGE	3,314	3,002	3,159	- 4.7	5.2	400	6-7 PM	FRI	22	3,985	FRI	1	3,159	3,143	1.01
K 18	0.7 MILES N.E. OF OGDEN	RILEY	19,971		21,828	9.3		2,554	4-5 PM	FRI	15	28,104	FRI	29	21,828	23,031	.95
US 24	4 MILES N. OF MANHATTAN	RILEY	7,217	6,753	7,062	- 2.1	4.6	888	2-3 PM	SAT	23	9,074	FRI	1	7,062	6,971	1.01
K 4	1MI. S. OF JCT. US-24	SHAWNEE		7,919	8,928		12.7	1,133	7-8 AM	THU	7	11,038	FRI	1	8,928	9,661	.92
US 24	1 MILE N.W. OF ROSSVILLE	SHAWNEE	5,198	4,571	4,874	- 6.2	6.6	593	3-4 PM	SAT	23	6,089	FRI	1	4,874	5,080	.96
I 70	4.7 MILES E. OF K 30 INTCHG. (MAPLE HILL)	WABAUNSEE	20,925	19,536	20,829	- 0.5	6.6	2,553	5-6 PM	FRI	1	28,846	FRI	1	20,829	19,881	1.05

Percent of Change for District 1 Stations

- 2.2 4.4

Rural State Highways for District 2

K 9	5.8 MILES E. OF CLIFTON	CLAY	362	334	375	3.6	12.3	67	6-7 PM	FRI	8	609	FRI	1	375	410	.91
K 15	3.3 MILES N. OF CLAY CENTER	CLAY	1,962	1,819	1,885	- 3.9	3.6	225	5-6 PM	FRI	1	2,531	FRI	1	1,885	1,961	.96
I 70	W. OF K-232 INTCHG. (WILSON)	ELLSWORTH	11,155	10,419	10,679	- 4.3	2.5	1,468	4-5 PM	MON	4	16,060	FRI	1	10,679	10,508	1.02
K 141	2.8 MILES S. OF KANOPOLIS DAM	ELLSWORTH	638	508	469	- 26.5	- 7.7	134	2-3 PM	SUN	17	933	SUN	3	469	433	1.08
K 18	1.8 MILES W. OF JUNCTION CITY	GEARY	1,357	1,314	1,333	- 1.8	1.4	161	5-6 PM	THU	21	1,647	FRI	1	1,333	1,379	.97
I 70	4.5 MILES S.W. OF JUNCTION CITY	GEARY	17,769	16,404	17,098	- 3.8	4.2	1,831	5-6 PM	FRI	29	21,233	FRI	29	17,098	16,540	1.03
US 77	4 MILES S. OF JUNCTION CITY	GEARY	3,516	2,791	3,469	- 1.3	24.3	463	8-9 AM	SAT	23	4,515	SAT	16	3,469	3,434	1.01
US 36	1 MILE E. OF MANKATO	JEWELL	2,071	1,749	1,884	- 9.0	7.7	241	6-7 PM	FRI	1	2,607	FRI	1	1,884	1,990	.95
K 18	0.5 MILES W. OF LINCOLN	LINCOLN		1,012	1,001		- 1.1	121	4-5 PM	FRI	1	1,355	FRI	1	1,001	1,062	.94
I 135	0.5 MILES N. OF US 56 INTCHG. (MCPHERSON)	MCPHERSON	12,983	11,932	12,699	- 2.2	6.4	1,455	5-6 PM	FRI	1	16,899	FRI	1	12,699	12,385	1.03
K 14	3 MILES S. OF BELOIT	MITCHELL	879	844	839	- 4.6	- 0.6	125	6-7 PM	FRI	29	1,111	FRI	29	839	909	.92
US 81	2.5 MILES S. OF BELLEVILLE	REPUBLIC	4,858	4,292	4,766	- 1.9	11.0	521	6-7 PM	FRI	1	6,559	FRI	1	4,766	4,872	.98

Percent of Change for District 2 Stations

- 3.6 5.8

Rural State Highways for District 3

US 83	6.2 MILES S. OF OAKLEY	LOGAN	1,418	1,387	1,614	13.8	16.4	188	8-9 AM	SAT	30	2,115	FRI	1	1,614	1,690	.96
US 36	9.5 MILES W. OF NORTON	NORTON	989	940	1,243	25.7	32.2	157	2-3 PM	TUE	19	1,763	TUE	19	1,243	1,385	.90
US 183	1.2 MILES S. OF PHILLIPSBURG	PHILLIPS	2,784	2,322	2,452	- 11.9	5.6	302	5-6 PM	FRI	8	3,126	FRI	1	2,452	2,608	.94
K 23	14.5 MILES S. OF HOXIE	SHERIDAN	834	757	819	- 1.8	8.2	138	6-7 PM	FRI	22	1,096	FRI	22	819	868	.94
I 70	2.2 MI. E OF KANORADO EXIT	SHERMAN	9,240	8,475	8,557	- 7.4	1.0	1,148	3-4 PM	MON	4	13,080	FRI	1	8,557	8,560	1.00
US 24	7.3 MILES E. OF COLBY	THOMAS	1,805	1,675	1,714	- 5.0	2.3	215	6-7 PM	FRI	1	2,421	FRI	1	1,714	1,800	.95
K 25	1.8 MILES S. OF COLBY	THOMAS	845	823	804	- 4.9	- 2.3	91	5-6 PM	TUE	12	967	THU	7	804	883	.91
I 70	1 MILE W. OF WAKEENEY	TREGO	9,666	9,456	9,642	- 0.2	2.0	1,316	2-3 PM	MON	4	14,428	FRI	1	9,642	9,678	1.00
US 40	1.4 MILES E. OF KAN-COLO ST. LINE	WALLACE	545	461	484	- 11.2	5.0	76	5-6 PM	SAT	16	686	FRI	15	484	510	.95

Percent of Change for District 3 Stations

- 2.8 3.9

Date: 01-NOV-2006

Month of September, 2006

Sparse Matrix Model

Route Description	Location Description	County	Average Daily Traffic for the Month			Percent Change Month		Maximum Hour				Maximum Day			7 Day Avg	5 Day Avg	7 Day / 5 Day Avg	
			2004	2005	2006	2004	2005	Volume	Hour	DOW	Day	Volume	DOW	Day				
Rural State Highways for District 4																		
US 54	3 MILES W. OF IOLA	ALLEN	3,300	2,898	3,101	- 6.0	7.0	353	5-6 PM	FRI	15	3,958	FRI	29	3,101	3,172	.98	
US 169	1 MILE N. OF GREELEY	ANDERSON	3,508	3,333	3,306	- 5.8	- 0.8	391	5-6 PM	FRI	1	4,350	FRI	1	3,306	3,437	.96	
US 69	2 MILES N. OF FT SCOTT	BOURBON	5,478	5,120														
US 166	0.5 MILES W. OF NIOTAZE	CHAUTAUQUA	2,783	2,382	2,592	- 6.9	8.8	282	5-6 PM	FRI	22	3,214	FRI	15	2,592	2,608	.99	
I 35	2 MILES W. OF K- 131 INTCHG. N. OF LEBO	COFFEY	13,779	13,048	13,526	- 1.8	3.7	1,534	5-6 PM	FRI	1	19,088	FRI	1	13,526	13,318	1.02	
US 59	4.3 MILES S. OF OTTAWA	FRANKLIN	6,408	5,857	6,050	- 5.6	3.3	681	5-6 PM	FRI	1	7,581	FRI	1	6,050	6,138	.99	
I 35	2 MILES N.E. OF THE WELLSVILLE INTCHG.	FRANKLIN	19,538	18,776	20,516	5.0	9.3	2,275	4-5 PM	FRI	1	26,968	FRI	1	20,516	20,937	.98	
US 400	3 MILES E. OF PARSONS	LABETTE		3,303	3,774		14.3	*	527	4-5 PM	MON	4	5,627	FRI	1	3,774	3,888	.97
US 59	4 MILES S. OF ERIE	NEOSHO	3,087	2,798	3,124	1.2	11.7	363	5-6 PM	FRI	15	4,011	FRI	15	3,124	3,375	.93	
US 169	1 MILE N. OF THAYER	NEOSHO	4,055	4,033	4,442	9.5	10.1	611	5-6 PM	FRI	1	6,688	FRI	1	4,442	4,746	.94	
US 75	1 MILE N. OF YATES CENTER	WOODSON	2,983	2,823														
K 105	2 MILES N. OF TORONTO	WOODSON	720	672	697	- 3.2	3.7	102	11-12 AM	SAT	2	967	SAT	2	697	680	1.03	

Percent of Change for District 4 Stations

.3 6.6

Rural State Highways for District 5

US 56	5.5 MILES E. OF GREAT BEND	BARTON	5,196	5,058	5,144	- 1.0	1.7	558	5-6 PM	FRI	1	6,259	FRI	1	5,144	5,328	.97
US 77	2 MILES N. OF EL DORADO	BUTLER	2,748	2,670	2,526	- 8.1	- 5.4	317	1-2 PM	SUN	17	3,190	SAT	16	2,526	2,441	1.03
US 400	1.5 MILES E. OF LEON	BUTLER	5,128	4,907	4,558	- 11.1	- 7.1	511	5-6 PM	FRI	29	5,847	FRI	29	4,558	4,500	1.01
US 77	3.7 MILES N. OF ARKANSAS CITY	COWLEY	10,750	10,107	11,560	7.5	14.4	1,201	3-4 PM	FRI	8	13,686	FRI	15	11,560	12,388	.93
US 160	6.2 MILES E. OF ATTICA	HARPER	1,468	1,408	1,680	14.4	19.3	207	4-5 PM	SAT	30	2,255	SAT	30	1,680	1,653	1.02
US 50	3 MILES N.E. OF NEWTON	HARVEY	6,253	5,692	6,406	2.4	12.5	829	8-9 AM	SAT	16	9,744	SAT	16	6,406	6,365	1.01
US 54	5.8 MILES W. OF KINGMAN	KINGMAN		4,241	4,574		7.9	481	4-5 PM	FRI	22	5,953	FRI	1	4,574	4,616	.99
US 183	7 MILES S. OF GREENSBURG	KIOWA	936	897	911	- 2.7	1.6	105	6-7 PM	FRI	1	1,373	FRI	1	911	989	.92
US 56	5 MILES S.W. OF LARNED	PAWNEE	2,073	1,934	1,960	- 5.5	1.3	225	5-6 PM	FRI	29	2,504	FRI	29	1,960	2,044	.96
K 61	5 MILES S.W. OF ARLINGTON	RENO	2,272	2,137	2,238	- 1.5	4.7	236	5-6 PM	FRI	15	2,981	SAT	16	2,238	2,196	1.02
K 14	1 MILE N. OF LYONS	RICE	1,549	1,495	1,510	- 2.5	1.0	190	5-6 PM	FRI	8	1,906	FRI	8	1,510	1,525	.99
K 42	3 MILES N.E. OF VIOLA	SEDGWICK	4,341	4,141	4,479	3.2	8.2	510	5-6 PM	FRI	22	5,501	FRI	22	4,479	4,760	.94
US 281	0.5 MILES S. OF ST. JOHN	STAFFORD	2,516	2,279	2,339	- 7.0	2.6	252	5-6 PM	FRI	1	3,039	FRI	1	2,339	2,509	.93
US 81	4.1 MILES S. OF WELLINGTON	SUMNER	2,109	1,853	1,834	- 13.0	- 1.0	215	5-6 PM	FRI	1	2,188	FRI	1	1,834	1,930	.95

Percent of Change for District 5 Stations

- .4 5.9

Rural State Highways for District 6

US 83	8.2 MILES S. OF GARDEN CITY	FINNEY	4,026	3,711	3,733	- 7.3	0.6	357	5-6 PM	FRI	29	4,176	WED	27	3,733	3,921	.95	
US 50	3.3 MILES W. OF DODGE CITY	FORD	5,883	5,293	5,541	- 5.8	4.7	539	5-6 PM	FRI	29	6,564	FRI	29	5,541	5,770	.96	
K 25	2.5 MILES N. OF ULYSSES	GRANT	1,644	1,469	1,580	- 3.9	7.6	224	6-7 PM	FRI	8	2,033	FRI	8	1,580	1,704	.93	
K 27	15 MILES N OF TRIBUNE	GREELEY	626	605	630	0.6	4.1	*	81	6-7 PM	FRI	15	885	FRI	1	630	702	.90
US 50	0.8 MILES E. OF KAN-COLO ST. LINE	HAMILTON	1,839	1,674	1,768	- 3.9	5.6	231	2-3 PM	MON	4	2,486	FRI	1	1,768	1,824	.97	
US 283	8.3 MILES N. OF JETMORE	HODGEMAN	768	765	635	- 17.3	- 17.0	73	5-6 PM	FRI	29	811	FRI	1	635	686	.93	
US 54	3.7 MILES W. OF MEADE	MEADE	3,196	3,035	3,160	- 1.1	4.1	272	5-6 PM	FRI	1	3,577	FRI	1	3,160	3,191	.99	
K 96	12 MILES W. OF SCOTT CITY	WICHITA	1,336	1,220	1,198	- 10.3	- 1.8	136	3-4 PM	THU	7	1,519	FRI	29	1,198	1,298	.92	

Percent of Change for District 6 Stations

- 5.8 2.6

Date: 01-NOV-2006

Month of September, 2006

Sparse Matrix Model

Route Description	Location Description	County	Average Daily Traffic for the Month			Percent Change Month		Maximum Hour				Maximum Day			7 Day Avg	5 Day Avg	7 Day / 5 Day Avg
			2004	2005	2006	2004	2005	Volume	Hour	DOW	Day	Volume	DOW	Day			

Rural Secondary Stations

RS 61	6.5 MILES S.W. OF HIAWATHA	BROWN	261	254	209	-19.9	-17.7	34	4-5 PM	THU	7	270	FRI	29	209	224	.93
RS 463	0.7 MILES S.W. OF BELOIT	MITCHELL	257	281	271	5.4	-3.6	57	5-6 PM	THU	21	396	FRI	29	271	298	.91
RS 272	2 MILES S. OF QUINTER	GOVE	372	372	373	0.3	0.3	46	6-7 PM	WED	27	466	FRI	29	373	393	.95
RS 13	0.5 MILES N. OF BUSH CITY	ANDERSON	360	362	346	-3.9	-4.4	42	5-6 PM	FRI	15	447	TUE	19	346	360	.96
RS 18	3 MILES E. OF PARSONS	LABETTE	2,567	2,260	2,050	-20.1	-9.3	227	5-6 PM	TUE	19	2,682	FRI	1	2,050	2,206	.93
RS 303	0.8 MI. S. OF US-54 & K17 JCT. (MIDWAY)	KINGMAN	406	354	390	-3.9	10.2	47	10-11 AM	SAT	9	480	FRI	15	390	386	1.01
RS 251	6 MILES W. OF FORD	FORD	492	447	440	-10.6	-1.6	76	5-6 PM	FRI	29	668	FRI	29	440	450	.98

Percent of Change for Rural Secondary Stations

- 5.5 - 2.0

Reservoir Stations

K 237	1.5 MILES N. OF JCT. US 24	JEFFERSON	1,442	1,285	1,316	-8.7	2.4	201	3-4 PM	SUN	3	2,359	SUN	3	1,316	1,256	1.05
LOCAL ROAD	KANOPOLIS RESERVOIR N. OF DAM	ELLSWORTH	292	216	166	-43.2	-23.1					396	SUN	3	166	140	1.19
LOCAL ROAD	KANOPOLIS RESERVOIR S. OF DAM	ELLSWORTH	240	329	214	-10.8	-35.0					791	SUN	3	214	176	1.22
LOCAL ROAD	CEDAR BLUFF RESERVOIR N. OF DAM	TREGO	137	105	82	-40.1	-21.9					389	SUN	3	82	59	1.39

Percent of Change for Reservoir Stations

- 15.8 - 8.1

Kansas City Stations

I 35	0.5 MILES S.W. OF 87TH ST INTCHG.	JOHNSON	108,764														
US 69	0.8 MILES N. OF 167TH ST	JOHNSON	26,483		28,068	6.0		3,273	7-8 AM	TUE	19	32,018	FRI	15	28,068	30,030	.93
135TH	135TH E. OF MUR-LEN	JOHNSON	37,768	35,748	36,374	-3.7	1.8	3,414	4-5 PM	FRI	8	43,379	FRI	29	36,374	37,800	.96
BLACKBOB	BLACKBOB RD. S. OF 139TH	JOHNSON	23,228		23,083	-0.6		2,333	5-6 PM	FRI	29	26,082	SAT	30	23,083	23,379	.99
I 435	0.8 MILES S. OF I - 70	WYANDOTTE		58,082	63,980		10.2	7,789	5-6 PM	FRI	29	82,901	FRI	29	63,980	67,507	.95

Percent of Change for Kansas City Stations

.1 7.0

Salina Stations

OHIO ST.	OHIO ST. N. OF WESTCHESTER DR.	SALINE	18,688	17,766	16,650	-10.9	-6.3	1,695	5-6 PM	THU	28	20,383	FRI	29	16,650	18,353	.91
----------	--------------------------------	--------	--------	--------	--------	-------	------	-------	--------	-----	----	--------	-----	----	--------	--------	-----

Percent of Change for Salina Stations

- 10.9 - 6.3

Topeka Stations

WANAMAKER	WANAMAKER RD. N. OF 33RD ST.	SHAWNEE	10,259	9,613	7,893	-23.1	-17.9	942	5-6 PM	FRI	29	11,235	FRI	29	7,893	8,241	.96
45TH ST.	45TH ST. E. OF INDIANA	SHAWNEE		7,107													
W. 10TH ST.	10TH STREET WEST OF WASHBURN	SHAWNEE	12,496	12,915	12,306	-1.5	-4.7	1,310	3-4 PM	FRI	15	15,344	FRI	29	12,306	13,937	.88
TYLER ST.	TYLER ST. N. OF LAURENT ST.	SHAWNEE	544	799	772	41.9	-3.4	144	12-1 PM	WED	20	1,118	TUE	5	772	957	.81
N. TOPEKA	TOPEKA BLVD. NORTH OF PARAMORE ST.	SHAWNEE	17,386	17,485	11,949	-31.3	-31.7	1,256	4-5 PM	FRI	1	15,055	FRI	1	11,949	12,839	.93
I 70	I 70 E. OF MACVICAR ST.	SHAWNEE	47,080	45,086	46,030	-2.2	2.1	4,912	4-5 PM	FRI	29	58,136	FRI	1	46,030	49,405	.93
I 470	I 470 N.W. OF HUNTOON	SHAWNEE	36,905	34,702	36,028	-2.4	3.8	3,934	5-6 PM	FRI	22	43,351	FRI	22	36,028	38,086	.95
US 40	US 40 E. OF TECUMSEH RD.	SHAWNEE	4,479	4,775	4,897	9.3	2.6	674	5-6 PM	WED	27	5,982	FRI	1	4,897	5,329	.92
US 75	US 75 N. OF S.W. 57TH	SHAWNEE	12,732	13,420	14,809	16.3	10.4	1,771	7-8 AM	TUE	26	17,799	FRI	1	14,809	15,927	.93

Percent of Change for Topeka Stations

.8 3.8

Date: 01-NOV-2006

Month of September, 2006

Sparse Matrix Model

Route Description	Location Description	County	Average Daily Traffic for the Month			Percent Change Month		Maximum Hour				Maximum Day			7 Day Avg	5 Day Avg	7 Day / 5 Day Avg
			2004	2005	2006	2004	2005	Volume	Hour	DOW	Day	Volume	DOW	Day			
Wichita Stations																	
K 96	K-96 E. OF GREENWICH RD.	SEDGWICK	20,284	21,083	22,691	11.9	7.6	2,697	5-6 PM	WED	27	26,584	FRI	29	22,691	25,115	.90
US 54	KELLOGG E. OF WEST ST.	SEDGWICK	77,140		89,590	16.1		8,552	5-6 PM	TUE	12	106,816	FRI	29	89,590	98,214	.91
13TH ST.	13TH ST W. OF PINECREST	SEDGWICK	18,234	17,245	16,041	- 12.0	- 7.0	1,662	5-6 PM	THU	7	19,712	FRI	1	16,041	17,240	.93
ROCK RD.	ROCK RD. S. OF CENTRAL AVE	SEDGWICK	35,042	32,322	33,720	- 3.8	4.3	3,200	5-6 PM	THU	7	40,193	FRI	29	33,720	34,973	.96
21ST ST.	21ST ST E. OF WASHINGTON	SEDGWICK	15,512	10,696	15,469	- 0.3	44.6	1,594	4-5 PM	FRI	15	18,439	FRI	1	15,469	16,478	.94
HILLSIDE ST.	HILLSIDE S. OF 15TH ST	SEDGWICK	14,009	13,337	12,828	- 8.4	- 3.8	1,303	5-6 PM	WED	27	15,450	FRI	29	12,828	14,279	.90
I 235	I 235 S. OF MAPLE ST	SEDGWICK	49,518	47,503	49,745	0.5	4.7	5,007	5-6 PM	TUE	26	58,769	FRI	29	49,745	53,549	.93
I 135	I-135 N. OF 21ST ST.	SEDGWICK	66,922	64,688													
						4.5 5.8											

Percent of Change for Wichita Stations

NOTE: * Excluded from Percent Change Totals