

**KANSAS DEPARTMENT OF TRANSPORTATION
BUREAU OF TRANSPORTATION PLANNING**

OCTOBER 2012

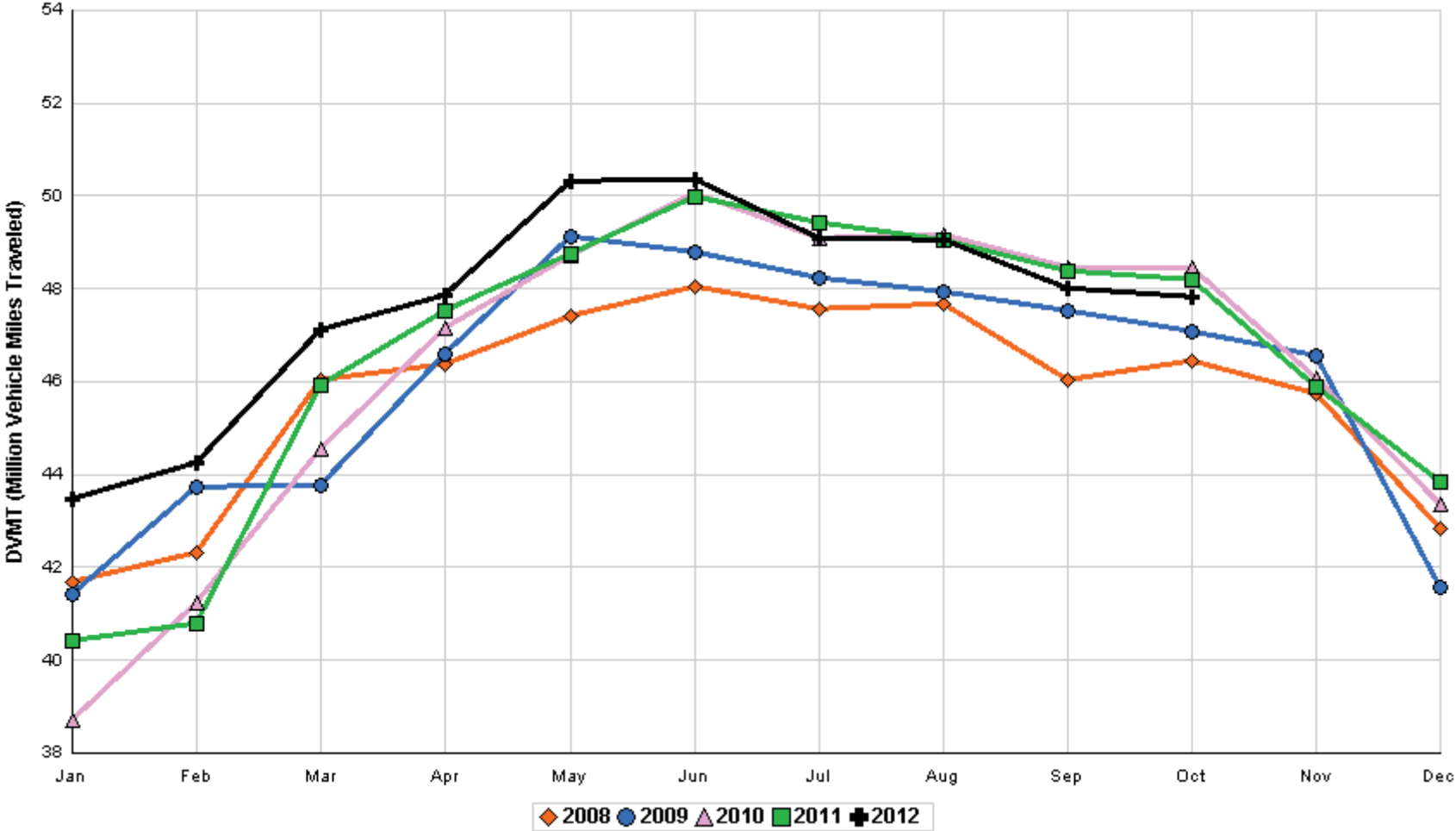
SIGNIFICANT FACTS AND TRENDS



Travel on the Kansas State Highway System				
	Daily Vehicle Miles		% Change	
	(In Millions)		2011 to 2012	
Month	2011	2012	Month	Year
Jan	40.412	43.456	7.5	7.5
Feb	40.793	44.246	8.5	8.0
Mar	45.930	47.106	2.6	6.0
Apr	47.510	47.844	0.7	4.6
May	48.745	50.308	3.2	4.3
Jun	49.964	50.354	0.8	3.6
Jul	49.431	49.087	- 0.7	3.0
Aug	49.047	49.053	0.0	2.6
Sep	48.398	48.008	- 0.8	2.2
Oct	48.198	47.806	- 0.8	1.9
Nov	45.890			
Dec	43.834			
Average	46.513			

**Contact the Traffic and Field Operations Unit with questions or requests at:
(785)-296-3841 or E-mail: TrafficCounts@ksdot.org
The Monthly Average Daily Traffic (MADT) is Calculated Utilizing the
Day-Of-Week (DOW) Method. Missing Traffic Count Data will Not be Estimated
Therefore Station Summary Data will be Blank where Data is Not Available.**

Total Travel on Kansas State Highway System 2008 - 2012



Month of October, 2012

Sparse Matrix Model

Date: 03-DEC-2012

Route Description	Location Description	County	Average Daily Traffic for the Month			Percent Change Month		Maximum Hour				Maximum Day			7 Day Avg	5 Day Avg	7 Day / 5 Day Avg
			2010	2011	2012	2010	2011	Volume	Hour	DOW	Day	Volume	DOW	Day			
Rural State Highways for District 1																	
US-75	1.2 MILES N. OF US-36 I.C.	BROWN	3,990	4,927	3,744	- 6.2	- 24.0	366	5- 6 pm	FRI	26	4,472	FRI	19	3,744	3,886	.96
US 24	1.5 MILES N.E. OF LAWRENCE	DOUGLAS	7,338	7,062	6,576	- 10.4	- 6.9	779	5- 6 pm	FRI	12	7,638	FRI	12	6,576	6,815	.96
US 56	4 MILES E. OF OVERBROOK	DOUGLAS	2,115	2,121	2,032	- 3.9	- 4.2	301	3- 4 pm	SAT	20	3,362	SAT	20	2,032	1,932	1.05
US 75	5.8 MILES N. OF HOLTON	JACKSON	6,255	6,362	5,686	- 9.1	- 10.6	610	4- 5 pm	FRI	26	6,853	FRI	12	5,686	5,796	.98
K 10	0.2 MILES E. OF RS. 346 INTCHG.	JOHNSON	35,500	33,352	32,265	- 9.1	- 3.3	3,644	5- 6 pm	FRI	12	38,532	FRI	12	32,265	33,517	.96
K 99	2.9 MILES S. OF EMPORIA	LYON	4,045	4,010	3,781	- 6.5	- 5.7	420	7- 8 am	TUE	9	4,474	FRI	5	3,781	4,060	.93
US 36	13 MILES E. OF MARYSVILLE	MARSHALL	2,589	2,892	2,464	- 4.8	- 14.8	265	6- 7 pm	FRI	19	3,166	FRI	19	2,464	2,557	.96
K 68	0.15 MILES E. OF JCT K 268	OSAGE	2,834	2,694	2,528	- 10.8	- 6.2	291	4- 5 pm	FRI	19	3,041	SAT	6	2,528	2,480	1.02
K 268	0.1 MILES E. OF US 75	OSAGE	2,963	2,895	2,724	- 8.1	- 5.9	309	4- 5 pm	FRI	19	3,158	FRI	19	2,724	2,732	1.00
K 18	0.7 MILES N.E. OF OGDEN	RILEY	25,490														
US 24	4 MILES N. OF MANHATTAN	RILEY	7,257	7,288	6,970	- 4.0	- 4.4	979	6- 7 pm	SAT	27	8,674	FRI	5	6,970	6,961	1.00
K 4	1MI. S. OF JCT. US-24	SHAWNEE		9,121	9,235		1.2	1,094	7- 8 am	TUE	2	10,613	FRI	19	9,235	9,882	.93
US 24	1 MILE N.W. OF ROSSVILLE	SHAWNEE	4,783	4,866	4,055	- 15.2	- 16.7	438	5- 6 pm	THU	11	4,855	FRI	19	4,055	4,296	.94
I 70	4.7 MILES E. OF K 30 INTCHG. (MAPLE HILL)	WABAUNSEE	20,649	19,863	20,666	0.1	4.0	2,517	4- 5 pm	SAT	6	27,937	SAT	6	20,666	19,654	1.05

Percent of Change for District 1 Stations

- 6.8 - 4.4

Rural State Highways for District 2

K 9	5.8 MILES E. OF CLIFTON	CLAY	337	358	364	8.0	1.7	64	5- 6 pm	MON	15	504	MON	15	364	403	.90
K 15	3.3 MILES N. OF CLAY CENTER	CLAY	1,969	1,920	1,857	- 5.7	- 3.3	196	7- 8 am	TUE	23	2,148	FRI	26	1,857	1,993	.93
I 70	W. OF K-232 INTCHG. (WILSON)	ELLSWORTH	9,808	9,739													
K 141	2.8 MILES S. OF KANOPOLIS DAM	ELLSWORTH	505		405	- 19.8		69	2- 3 pm	SUN	14	564	SAT	20	405	382	1.06
K 18	1.8 MILES W. OF JUNCTION CITY	GEARY	1,541	1,426	1,348	- 12.5	- 5.5	186	4- 5 pm	FRI	12	1,595	FRI	5	1,348	1,472	.92
I 70	4.5 MILES S.W. OF JUNCTION CITY	GEARY	16,991	16,508	16,167	- 4.8	- 2.1	1,778	4- 5 pm	FRI	5	20,220	FRI	5	16,167	15,784	1.02
US 77	4 MILES S. OF JUNCTION CITY	GEARY	4,490	3,995	3,946	- 12.1	- 1.2	604	11-12 pm	SAT	27	5,606	SAT	27	3,946	3,916	1.01
US 36	1 MILE E. OF MANKATO	JEWELL	1,900	1,861	1,801	- 5.2	- 3.2	210	4- 5 pm	FRI	19	2,271	FRI	19	1,801	1,923	.94
K 18	0.5 MILES W. OF LINCOLN	LINCOLN	1,032	1,140	1,020	- 1.2	- 10.5	122	4- 5 pm	TUE	9	1,294	FRI	5	1,020	1,081	.94
I 135	0.5 MILES N. OF US 56 INTCHG. (MCPHERSON)	MCPHERSON	10,900	12,810	12,591	15.5	- 1.7	1,345	5- 6 pm	FRI	5	15,660	FRI	5	12,591	12,397	1.02
K 14	3 MILES S. OF BELOIT	MITCHELL	880	913	843	- 4.2	- 7.7	94	3- 4 pm	TUE	9	1,016	FRI	26	843	912	.92
US 81	2.5 MILES S. OF BELLEVILLE	REPUBLIC	5,061	5,277	4,829	- 4.6	- 8.5	481	3- 4 pm	FRI	26	5,923	FRI	19	4,829	4,941	.98

Percent of Change for District 2 Stations

- 1.0 - 3.1

Rural State Highways for District 3

US 83	6.2 MILES S. OF OAKLEY	LOGAN	1,863	2,048	1,881	1.0	- 8.2	181	9-10 am	TUE	30	2,285	THU	4	1,881	2,038	.92
US 36	9.5 MILES W. OF NORTON	NORTON	1,006	1,019	945	- 6.1	- 7.3	102	4- 5 pm	MON	29	1,138	FRI	19	945	1,021	.93
US 183	1.2 MILES S. OF PHILLIPSBURG	PHILLIPS	2,377	2,411	2,202	- 7.4	- 8.7	236	5- 6 pm	MON	29	2,608	FRI	5	2,202	2,304	.96
K 23	14.5 MILES S. OF HOXIE	SHERIDAN	766	824	879	14.8	6.7	94	4- 5 pm	THU	11	1,140	FRI	19	879	945	.93
I 70	2.2 MI. E OF KANORADO EXIT	SHERMAN	7,534	7,877	6,978	- 7.4	- 11.4	705	3- 4 pm	SUN	28	7,634	SUN	28	6,978	6,946	1.00
US 24	7.3 MILES E. OF COLBY	THOMAS	1,876	1,836	1,791	- 4.5	- 2.5	201	5- 6 pm	FRI	5	2,076	THU	4	1,791	1,986	.90
K 25	1.8 MILES S. OF COLBY	THOMAS	903	914	803	- 11.1	- 12.1	85	11-12 pm	MON	8	953	TUE	16	803	899	.89
I 70	1 MILE W. OF WAKEENEY	TREGO	8,935	8,716	8,772	- 1.8	0.6	843	2- 3 pm	SUN	28	10,563	FRI	5	8,772	8,807	1.00
US 40	1.4 MILES E. OF KAN-COLO ST. LINE	WALLACE	550	572	520	- 5.5	- 9.1	73	5- 6 pm	TUE	30	644	FRI	5	520	563	.92

Percent of Change for District 3 Stations

- 4.0 - 5.5

Date: 03-DEC-2012

Month of October, 2012

Sparse Matrix Model

Route Description	Location Description	County	Average Daily Traffic for the Month			Percent Change Month		Maximum Hour				Maximum Day			7 Day Avg	5 Day Avg	7 Day / 5 Day Avg
			2010	2011	2012	2010	2011	Volume	Hour	DOW	Day	Volume	DOW	Day			
Rural State Highways for District 4																	
US 54	3 MILES W. OF IOLA	ALLEN	3,103	2,949	2,781	- 10.4	- 5.7	290	4- 5 pm	FRI	12	3,375	FRI	12	2,781	2,903	.96
US 169	1 MILE N. OF GREELEY	ANDERSON	3,423	3,432				259									
US 69	2 MILES N. OF FT SCOTT	BOURBON	6,278	5,821													
US 166	0.5 MILES W. OF NIOTAZE	CHAUTAUQUA	2,629	2,522	2,493	- 5.2	- 1.1	269	4- 5 pm	FRI	26	3,105	FRI	19	2,493	2,557	.97
I 35	2 MILES W. OF K- 131 INTCHG. N. OF LEBO	COFFEY	13,694	12,975	12,844	- 6.2	- 1.0	1,503	5- 6 pm	SUN	7	16,113	FRI	26	12,844	12,506	1.03
US 59	4.3 MILES S. OF OTTAWA	FRANKLIN	6,181	6,006	6,009	- 2.8	0.0	663	4- 5 pm	FRI	5	7,324	FRI	19	6,009	6,159	.98
I 35	2 MILES N.E. OF THE WELLSVILLE INTCHG.	FRANKLIN		19,930	20,186		1.3	2,205	4- 5 pm	FRI	19	24,837	FRI	19	20,186	20,497	.98
US 400	3 MILES E. OF PARSONS	LABETTE	3,800	3,740	3,582	- 5.7	- 4.2	409	4- 5 pm	FRI	5	4,690	FRI	5	3,582	3,636	.99
US 59	4 MILES S. OF ERIE	NEOSHO	3,110	3,038	2,935	- 5.6	- 3.4	312	7- 8 am	THU	18	3,793	FRI	5	2,935	3,222	.91
US 169	1 MILE N. OF THAYER	NEOSHO	4,289	4,270	4,124	- 3.8	- 3.4	486	5- 6 pm	FRI	5	5,276	FRI	19	4,124	4,313	.96
US 75	1 MILE N. OF YATES CENTER	WOODSON	2,881	2,732	2,672	- 7.3	- 2.2	322	5- 6 pm	FRI	5	3,425	FRI	5	2,672	2,675	1.00
K 105	2 MILES N. OF TORONTO	WOODSON	681	598	607	- 10.9	1.5	102	6- 7 pm	SAT	6	735	SAT	6	607	595	1.02

Percent of Change for District 4 Stations

- 5.7 - .9

Rural State Highways for District 5

US 56	5.5 MILES E. OF GREAT BEND	BARTON	5,405	5,136	5,049	- 6.6	- 1.7	549	5- 6 pm	FRI	12	5,993	FRI	12	5,049	5,390	.94
US 77	2 MILES N. OF EL DORADO	BUTLER	2,990	2,849	2,770	- 7.4	- 2.8	338	4- 5 pm	SUN	21	3,690	SAT	20	2,770	2,644	1.05
US 400	1.5 MILES E. OF LEON	BUTLER	4,763	4,386	4,639	- 2.6	5.8	538	6- 7 pm	FRI	5	5,967	FRI	5	4,639	4,545	1.02
US 77	3.7 MILES N. OF ARKANSAS CITY	COWLEY	11,576		10,765	- 7.0		1,155	3- 4 pm	FRI	5	12,955	FRI	5	10,765	11,611	.93
US 160	6.2 MILES E. OF ATTICA	HARPER	1,460	1,372	1,507	3.2	9.8	173	3- 4 pm	TUE	2	1,923	TUE	2	1,507	1,610	.94
US 50	3 MILES N.E. OF NEWTON	HARVEY	6,758	6,552	6,344	- 6.1	- 3.2	702	5- 6 pm	FRI	5	7,699	FRI	5	6,344	6,343	1.00
US 54	5.8 MILES W. OF KINGMAN	KINGMAN	5,197	5,028	5,336	2.7	6.1	516	5- 6 pm	FRI	19	6,530	FRI	19	5,336	5,460	.98
US 54	1.5 MILES W. OF HAVILAND	KIOWA	5,247	5,228	5,302	1.0	1.4	511	4- 5 pm	FRI	19	6,234	FRI	19	5,302	5,482	.97
US 183	7 MILES S. OF GREENSBURG	KIOWA	977	931	1,018	4.2	9.3	106	5- 6 pm	TUE	16	1,265	FRI	26	1,018	1,112	.92
US 56	5 MILES S.W. OF LARNED	PAWNEE	2,264	2,237	2,203	- 2.7	- 1.5	253	5- 6 pm	FRI	5	2,745	FRI	26	2,203	2,298	.96
K 61	5 MILES S.W. OF ARLINGTON	RENO	2,213	2,085	2,115	- 4.4	1.4	213	5- 6 pm	FRI	5	2,447	FRI	5	2,115	2,164	.98
K 14	1 MILE N. OF LYONS	RICE	1,459	1,472	1,376	- 5.7	- 6.5	153	4- 5 pm	TUE	16	1,678	FRI	5	1,376	1,482	.93
K 42	3 MILES N.E. OF VIOLA	SEDGWICK	4,384		4,561	4.0		497	5- 6 pm	FRI	19	5,351	FRI	26	4,561	4,940	.92
US 281	0.5 MILES S. OF ST. JOHN	STAFFORD	2,501	2,454	2,403	- 3.9	- 2.1	255	5- 6 pm	FRI	12	2,890	FRI	12	2,403	2,598	.92
US 81	4.1 MILES S. OF WELLINGTON	SUMNER	1,850	1,741	1,793	- 3.1	3.0	205	4- 5 pm	TUE	16	2,027	FRI	19	1,793	1,886	.95

Percent of Change for District 5 Stations

- 3.2 .9

Rural State Highways for District 6

US 83	8.2 MILES S. OF GARDEN CITY	FINNEY	4,187	4,190	4,215	0.7	0.6	398	4- 5 pm	TUE	2	4,767	FRI	5	4,215	4,529	.93
K 25	2.5 MILES N. OF ULYSSES	GRANT	1,567	1,538	1,508	- 3.8	- 2.0	156	5- 6 pm	WED	3	1,775	WED	3	1,508	1,651	.91
K 27	15 MILES N OF TRIBUNE	GREELEY	743	811	681	- 8.3	- 16.0	82	11-12 pm	THU	18	927	FRI	19	681	781	.87
US 50	0.8 MILES E. OF KAN-COLO ST. LINE	HAMILTON	1,604	1,521	1,524	- 5.0	0.2	210	1- 2 pm	TUE	2	1,944	TUE	2	1,524	1,616	.94
US 283	8.3 MILES N. OF JETMORE	HODGEMAN	886	918	1,010	14.0	10.0	116	9-10 pm	TUE	30	1,270	TUE	30	1,010	1,118	.90
US 54	3.7 MILES W. OF MEADE	MEADE	3,831		3,793	- 1.0		325	5- 6 pm	FRI	19	4,270	FRI	19	3,793	3,896	.97
K 96	12 MILES W. OF SCOTT CITY	WICHITA	1,310	1,351	1,270	- 3.1	- 6.0	131	5- 6 pm	FRI	5	1,528	THU	11	1,270	1,393	.91

Percent of Change for District 6 Stations

- .9 - 1.2

Month of October, 2012

Sparse Matrix Model

Date: 03-DEC-2012

Average Daily Traffic
for the Month

Percent Change
Month

Maximum Hour
Volume Hour DOW Day

Maximum Day
Volume DOW Day

7 Day Avg
5 Day Avg
7 Day / 5 Day Avg

Route Description Location Description County

2010 2011 2012 2010 2011

Rural Secondary Stations

RS 61	6.5 MILES S.W. OF HIAWATHA	BROWN	301	227	218	- 27.6	- 4.0	34	4- 5 pm	WED	10	275	MON	1	218	239	.91
RS 463	0.7 MILES S.W. OF BELOIT	MITCHELL	292	258	255	- 12.7	- 1.2	39	8- 9 pm	THU	11	357	THU	11	255	281	.91
RS 272	2 MILES S. OF QUINTER	GOVE	413	392	352	- 14.8	- 10.2	45	4- 5 pm	THU	11	446	FRI	19	352	367	.96
RS 13	0.5 MILES N. OF BUSH CITY	ANDERSON	379	360	312	- 17.7	- 13.3	51	3- 4 pm	SUN	14	391	FRI	12	312	331	.94
RS 18	3 MILES E. OF PARSONS	LABETTE	1,943	1,896	1,832	- 5.7	- 3.4	216	3- 4 pm	THU	18	2,305	FRI	19	1,832	1,995	.92
RS 303	0.8 MI. S. OF US-54 & K17 JCT. (MIDWAY)	KINGMAN		299	295		- 1.3	43	5- 6 pm	FRI	12	352	SAT	6	295	298	.99
RS 251	6 MILES W. OF FORD	FORD	443	414	467	5.4	12.8	62	5- 6 pm	FRI	26	603	FRI	5	467	499	.94

Percent of Change for Rural Secondary Stations

- 8.9 - 3.0

Reservoir Stations

K 237	1.5 MILES N. OF JCT. US 24	JEFFERSON	1,418	1,171	1,070	- 24.5	- 8.6	134	5- 6 pm	WED	3	1,545	SAT	20	1,070	1,057	1.01
LOCAL ROAD	KANOPOLIS RESERVOIR N. OF DAM	ELLSWORTH	228	149	107	- 53.1	- 28.2					284	SAT	13	107	79	1.35
LOCAL ROAD	KANOPOLIS RESERVOIR S. OF DAM	ELLSWORTH	256	217	150	- 41.4	- 30.9					361	SAT	27	150	110	1.36
LOCAL ROAD	CEDAR BLUFF RESERVOIR N. OF DAM	TREGO	10	74	76	660.0	2.7					515	SUN	21	76	49	1.55

Percent of Change for Reservoir Stations

- 26.6 - 12.9

Kansas City Stations

US 69	0.8 MILES N. OF 167TH ST	JOHNSON	29,160	28,609													
135TH	135TH E. OF MUR-LEN	JOHNSON	38,047	34,919	34,117	- 10.3	- 2.3	3,327	5- 6 pm	TUE	30	39,515	FRI	5	34,117	35,717	.96
BLACKBOB	BLACKBOB RD. S. OF 139TH	JOHNSON	22,228		21,224	- 4.5		2,179	5- 6 pm	MON	15	24,264	SAT	6	21,224	21,490	.99
I 435	0.8 MILES S. OF I - 70	WYANDOTTE	62,726	59,039	63,107	0.6	6.9	7,421	5- 6 pm	THU	11	76,210	FRI	19	63,107	66,000	.96

Percent of Change for Kansas City Stations

- 3.7 3.5

Salina Stations

OHIO ST.	OHIO ST. N. OF WESTCHESTER DR.	SALINE	17,952		17,070	- 4.9		1,731	2- 3 pm	FRI	26	21,181	FRI	26	17,070	18,879	.90
----------	--------------------------------	--------	--------	--	--------	-------	--	-------	---------	-----	----	--------	-----	----	--------	--------	-----

Percent of Change for Salina Stations

- 4.9

Topeka Stations

WANAMAHER	WANAMAHER RD. N. OF 33RD ST.	SHAWNEE	12,033														
45TH ST.	45TH ST. E. OF INDIANA	SHAWNEE	8,178	7,317	7,884	- 3.6	7.7	871	5- 6 pm	WED	3	9,111	FRI	12	7,884	8,237	.96
W. 10TH ST.	10TH STREET WEST OF WASHBURN	SHAWNEE	10,814														
N. TOPEKA	TOPEKA BLVD. NORTH OF PARAMORE ST.	SHAWNEE	19,114	19,406													
I 70	I 70 E. OF MACVICAR ST.	SHAWNEE	47,864	43,831				4,571									
I 470	I 470 N.W. OF HUNTOON	SHAWNEE	35,622		32,347	- 9.2		3,404	4- 5 pm	FRI	26	38,926	FRI	26	32,347	34,561	.94
US 40	US 40 E. OF TECUMSEH RD.	SHAWNEE	5,241	4,973	4,881	- 6.9	- 1.8	658	5- 6 pm	WED	17	5,758	FRI	26	4,881	5,387	.91
US 75	US 75 N. OF S.W. 57TH	SHAWNEE	14,732	14,285	15,599	5.9	9.2	1,900	7- 8 am	THU	11	17,832	FRI	5	15,599	16,962	.92

Percent of Change for Topeka Stations

- 4.8 6.7

Month of October, 2012

Sparse Matrix Model

Date: 03-DEC-2012

---- Average Daily Traffic ----			Percent Change		---- Maximum Hour ----				--- Maximum Day ---			7 Day	5 Day	7 Day /	
for the Month			Month		Volume	Hour	DOW	Day	Volume	DOW	Day	Avg	Avg	5 Day	Avg
2010	2011	2012	2010	2011											

Route Description	Location Description	County
-------------------	----------------------	--------

Wichita Stations

K 96	K-96 E. OF GREENWICH RD.	SEDGWICK	23,911	23,586	23,367	- 2.3	- 0.9	2,815	7- 8 am	WED	24	27,302	FRI	26	23,367	25,585	.91
US 54	KELLOGG E. OF WEST ST.	SEDGWICK		87,583	93,024		6.2	9,391	4- 5 pm	FRI	5	110,712	FRI	26	93,024	102,279	.91
13TH ST.	13TH ST W. OF PINECREST	SEDGWICK	16,336	14,517	13,498	- 17.4	- 7.0	1,464	5- 6 pm	TUE	2	15,876	FRI	5	13,498	14,732	.92
ROCK RD.	ROCK RD. S. OF CENTRAL AVE	SEDGWICK	32,213	29,908	31,815	- 1.2	6.4	3,071	3- 4 pm	FRI	26	37,535	FRI	26	31,815	33,294	.96
21ST ST.	21ST ST E. OF WASHINGTON	SEDGWICK	8,477	12,523	13,465	58.8	7.5	1,513	5- 6 pm	TUE	9	15,915	THU	11	13,465	14,646	.92
HILLSIDE ST.	HILLSIDE S. OF 15TH ST	SEDGWICK	12,045		12,132		0.7	1,217	5- 6 pm	THU	25	14,685	WED	3	12,132	13,702	.89
I 235	I 235 S. OF MAPLE ST	SEDGWICK	51,311	46,779	47,988	- 6.5	2.6	5,045	4- 5 pm	WED	31	57,199	FRI	5	47,988	51,876	.93
I 135	I-135 N. OF 21ST ST.	SEDGWICK	65,244	66,744	67,435	3.4	1.0	7,498	7- 8 am	TUE	30	81,410	FRI	5	67,435	76,702	.88

Percent of Change for Wichita Stations

.1 3.2

NOTE: * Excluded from Percent Change Totals