

**KANSAS DEPARTMENT OF TRANSPORTATION
BUREAU OF TRANSPORTATION PLANNING**

OCTOBER 2011

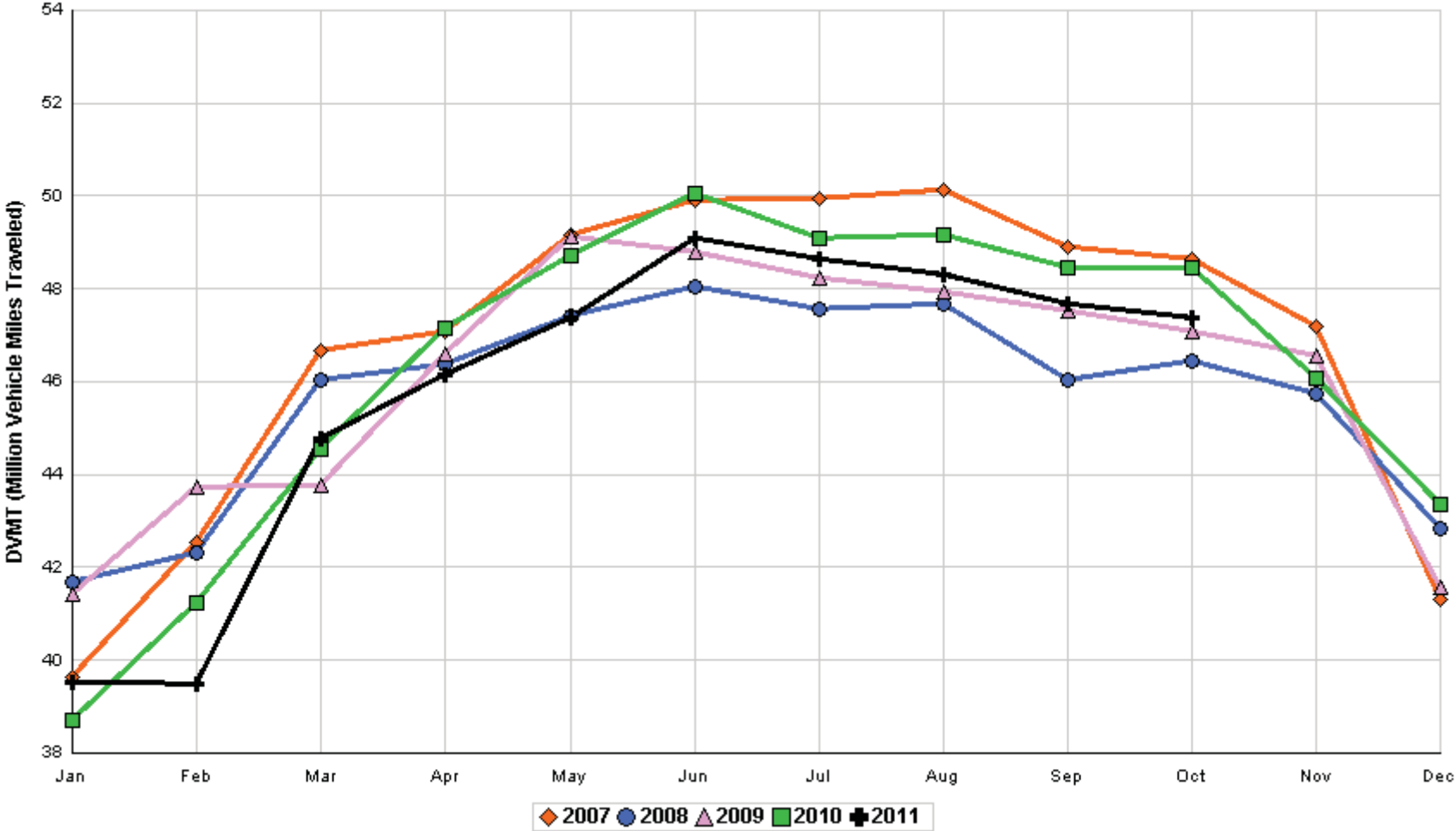
SIGNIFICANT FACTS AND TRENDS



Travel on the Kansas State Highway System				
	Daily Vehicle Miles		% Change	
	(In Millions)		2010 to 2011	
Month	2010	2011	Month	Year
Jan	38.710	39.540	2.1	2.1
Feb	41.232	39.486	- 4.2	- 1.1
Mar	44.532	44.785	0.6	- 0.5
Apr	47.139	46.148	- 2.1	- 1.0
May	48.727	47.370	- 2.8	- 1.4
Jun	50.068	49.100	- 1.9	- 1.5
Jul	49.096	48.638	- 0.9	- 1.4
Aug	49.176	48.317	- 1.7	- 1.4
Sep	48.444	47.688	- 1.6	- 1.5
Oct	48.437	47.370	- 2.2	- 1.5
Nov	46.091			
Dec	43.355			
Average	46.251			

**Contact the Traffic and Field Operations Unit with questions or requests at:
(785)-296-3841 or E-mail: TrafficCounts@ksdot.org
The Monthly Average Daily Traffic (MADT) is Calculated Utilizing the
Day-Of-Week (DOW) Method. Missing Traffic Count Data will Not be Estimated
Therefore Station Summary Data will be Blank where Data is Not Available.**

Total Travel on Kansas State Highway System 2007 - 2011



Month of October, 2011

Sparse Matrix Model

Date: 08-DEC-2011

Route Description	Location Description	County	Average Daily Traffic for the Month			Percent Change Month		Maximum Hour				Maximum Day			7 Day Avg	5 Day Avg	7 Day / 5 Day Avg
			2009	2010	2011	2009	2010	Volume	Hour	DOW	Day	Volume	DOW	Day			

Rural State Highways for District 1

US-75	1.2 MILES N. OF US-36 I.C.	BROWN	3,548	3,990	4,927	38.9	23.5	826	2-3 PM	SAT	1	7,798	FRI	7	4,927	4,899	1.01
US 24	1.5 MILES N.E. OF LAWRENCE	DOUGLAS	7,637	7,338	7,062	- 7.5	- 3.8	1,045	5-6 PM	FRI	21	8,556	SAT	8	7,062	7,063	1.00
US 56	4 MILES E. OF OVERBROOK	DOUGLAS	1,958	2,115	2,121	8.3	0.3	321	10-11 AM	SAT	15	3,431	SAT	15	2,121	2,005	1.06
US 75	5.8 MILES N. OF HOLTON	JACKSON		6,255	6,362		1.7	706	4-5 PM	FRI	7	8,369	FRI	7	6,362	6,395	.99
K 10	0.2 MILES E. OF RS. 346 INTCHG.	JOHNSON	34,131	35,500	33,597	- 1.6	- 5.4	3,772	5-6 PM	FRI	14	39,831	FRI	14	33,597	34,638	.97
K 99	2.9 MILES S. OF EMPORIA	LYON	3,983	4,045	4,010	0.7	- 0.9	429	5-6 PM	FRI	7	4,608	FRI	7	4,010	4,246	.94
US 36	13 MILES E. OF MARYSVILLE	MARSHALL	2,449	2,589	2,892	18.1	11.7	339	5-6 PM	FRI	7	3,794	FRI	7	2,892	2,952	.98
K 68	0.15 MILES E. OF JCT K 268	OSAGE	2,655	2,834	2,694	1.5	- 4.9	311	5-6 PM	FRI	14	3,218	SAT	1	2,694	2,645	1.02
K 268	0.1 MILES E. OF US 75	OSAGE	2,763	2,963	2,895	4.8	- 2.3	323	5-6 PM	THU	13	3,340	FRI	14	2,895	2,914	.99
K 18	0.7 MILES N.E. OF OGDEN	RILEY	24,786	25,490													
US 24	4 MILES N. OF MANHATTAN	RILEY	6,603	7,257	7,288	10.4	0.4	1,087	6-7 PM	SAT	29	8,858	FRI	7	7,288	7,211	1.01
K 4	1MI. S. OF JCT. US-24	SHAWNEE	8,593		9,121	6.1		1,087	7-8 AM	TUE	25	11,001	TUE	25	9,121	9,705	.94
US 24	1 MILE N.W. OF ROSSVILLE	SHAWNEE	4,640	4,783	4,866	4.9	1.7	540	11-12 AM	SAT	8	5,649	SAT	8	4,866	5,011	.97
I 70	4.7 MILES E. OF K 30 INTCHG. (MAPLE HILL)	WABAUNSEE	20,198	20,649	19,863	- 1.7	- 3.8	2,562	10-11 AM	SAT	29	26,902	SAT	29	19,863	18,695	1.06

Percent of Change for District 1 Stations

2.2 - 1.7

Rural State Highways for District 2

K 9	5.8 MILES E. OF CLIFTON	CLAY	321	337	358	11.5	6.2	48	2-3 PM	TUE	18	454	FRI	7	358	397	.90
K 15	3.3 MILES N. OF CLAY CENTER	CLAY	1,907	1,969	1,920	0.7	- 2.5	211	5-6 PM	FRI	7	2,252	FRI	7	1,920	2,076	.92
I 70	W. OF K-232 INTCHG. (WILSON)	ELLSWORTH	9,719	9,808	9,739	0.2	- 0.7	973	3-4 PM	SUN	23	12,603	FRI	7	9,739	9,545	1.02
K 141	2.8 MILES S. OF KANOPOLIS DAM	ELLSWORTH	421	505													
K 18	1.8 MILES W. OF JUNCTION CITY	GEARY	1,191	1,541	1,426	19.7	- 7.5	191	4-5 PM	TUE	25	1,746	FRI	14	1,426	1,512	.94
I 70	4.5 MILES S.W. OF JUNCTION CITY	GEARY	16,740	16,991	16,508	- 1.4	- 2.8	1,820	10-11 AM	SAT	29	20,718	SAT	1	16,508	16,043	1.03
US 77	4 MILES S. OF JUNCTION CITY	GEARY	3,837	4,490	3,995	4.1	- 11.0	665	11-12 AM	SAT	29	5,907	SAT	29	3,995	3,853	1.04
US 36	1 MILE E. OF MANKATO	JEWELL	1,770	1,900	1,861	5.1	- 2.1	216	5-6 PM	FRI	14	2,346	FRI	14	1,861	1,971	.94
K 18	0.5 MILES W. OF LINCOLN	LINCOLN	1,009	1,032	1,140	13.0	10.5	132	2-3 PM	FRI	14	1,381	FRI	21	1,140	1,214	.94
I 135	0.5 MILES N. OF US 56 INTCHG. (MCPHERSON)	MCPHERSON	11,732	10,900	12,810	9.2	17.5	1,368	5-6 PM	FRI	7	15,911	FRI	7	12,810	12,591	1.02
K 14	3 MILES S. OF BELOIT	MITCHELL	852	880	913	7.2	3.8	105	4-5 PM	THU	6	1,086	THU	13	913	1,000	.91
US 81	2.5 MILES S. OF BELLEVILLE	REPUBLIC	4,700	5,061	5,277	12.3	4.3	509	2-3 PM	FRI	14	6,502	FRI	14	5,277	5,396	.98

Percent of Change for District 2 Stations

4.0 1.9

Rural State Highways for District 3

US 83	6.2 MILES S. OF OAKLEY	LOGAN	1,562	1,863	2,048	31.1	9.9	188	10-11 AM	THU	20	2,318	FRI	14	2,048	2,197	.93
US 36	9.5 MILES W. OF NORTON	NORTON	872	1,006	1,019	16.9	1.3	109	1-2 PM	TUE	4	1,212	FRI	21	1,019	1,078	.95
US 183	1.2 MILES S. OF PHILLIPSBURG	PHILLIPS	2,332	2,377	2,411	3.4	1.4	267	5-6 PM	FRI	21	2,885	FRI	14	2,411	2,537	.95
K 23	14.5 MILES S. OF HOXIE	SHERIDAN	743	766	824	10.9	7.6	98	3-4 PM	SAT	22	993	FRI	7	824	873	.94
I 70	2.2 MI. E OF KANORADO EXIT	SHERMAN	7,218	7,534	7,877	9.1	4.6	1,452	2-3 PM	SUN	16	16,380	SUN	16	7,877	7,536	1.05
US 24	7.3 MILES E. OF COLBY	THOMAS	1,733	1,876	1,836	5.9	- 2.1	201	5-6 PM	FRI	14	2,221	FRI	7	1,836	1,951	.94
K 25	1.8 MILES S. OF COLBY	THOMAS	797	903	914	14.7	1.2	109	4-5 PM	THU	6	1,146	FRI	14	914	1,002	.91
I 70	1 MILE W. OF WAKEENEY	TREGO	8,358	8,935	8,716	4.3	- 2.5	881	2-3 PM	SUN	9	11,005	FRI	7	8,716	8,789	.99
US 40	1.4 MILES E. OF KAN-COLO ST. LINE	WALLACE	458	550	572	24.9	4.0	194	6-7 PM	THU	6	1,057	THU	6	572	629	.91

Percent of Change for District 3 Stations

8.9 1.6

Month of October, 2011

Sparse Matrix Model

Date: 08-DEC-2011

---- Average Daily Traffic ----
for the Month

Percent Change
Month

---- Maximum Hour ----
Volume Hour DOW Day

--- Maximum Day ---
Volume DOW Day

7 Day Avg
5 Day Avg
7 Day / 5 Day Avg

Route Description Location Description County

2009 2010 2011 2009 2010

Rural State Highways for District 4

US 54	3 MILES W. OF IOLA	ALLEN	2,983	3,103	2,949	- 1.1	- 5.0	326	5-6 PM	FRI	21	3,749	FRI	21	2,949	3,036	.97
US 169	1 MILE N. OF GREELEY	ANDERSON	3,353	3,423	3,432	2.4	0.3	372	4-5 PM	FRI	21	4,230	FRI	21	3,432	3,517	.98
US 69	2 MILES N. OF FT SCOTT	BOURBON		6,278	5,821		- 7.3	687	5-6 PM	FRI	21	7,240	FRI	7	5,821	5,773	1.01
US 166	0.5 MILES W. OF NIOTAZE	CHAUTAUQUA	2,419	2,629	2,522	4.3	- 4.1	265	3-4 PM	FRI	7	3,211	FRI	7	2,522	2,554	.99
I 35	2 MILES W. OF K- 131 INTCHG. N. OF LEBO	COFFEY		13,694	12,975		- 5.3	1,464	5-6 PM	SUN	2	16,132	FRI	14	12,975	12,671	1.02
US 59	4.3 MILES S. OF OTTAWA	FRANKLIN	6,033	6,181	6,006	- 0.4	- 2.8	649	5-6 PM	FRI	21	7,272	FRI	14	6,006	6,134	.98
I 35	2 MILES N.E. OF THE WELLSVILLE INTCHG.	FRANKLIN	19,765		19,930		0.8	2,486	4-5 PM	SUN	16	24,552	FRI	14	19,930	20,269	.98
US 400	3 MILES E. OF PARSONS	LABETTE	3,595	3,800	3,740	4.0	- 1.6	412	3-4 PM	FRI	28	4,894	FRI	14	3,740	3,784	.99
US 59	4 MILES S. OF ERIE	NEOSHO	3,100	3,110	3,038	- 2.0	- 2.3	348	5-6 PM	FRI	21	4,000	FRI	14	3,038	3,314	.92
US 169	1 MILE N. OF THAYER	NEOSHO	4,250	4,289	4,270	0.5	- 0.4	521	5-6 PM	FRI	7	5,506	FRI	7	4,270	4,429	.96
US 75	1 MILE N. OF YATES CENTER	WOODSON	2,721	2,881	2,732	0.4	- 5.2	386	9-10 AM	SAT	29	3,490	FRI	7	2,732	2,695	1.01
K 105	2 MILES N. OF TORONTO	WOODSON	629	681	598	- 4.9	- 12.2	107	11-12 AM	WED	19	806	SAT	15	598	595	1.01

.8 - 4.0

Percent of Change for District 4 Stations

Rural State Highways for District 5

US 56	5.5 MILES E. OF GREAT BEND	BARTON	4,925	5,405	5,136	4.3	- 5.0	569	5-6 PM	FRI	21	6,311	FRI	21	5,136	5,449	.94
US 77	2 MILES N. OF EL DORADO	BUTLER	2,707	3,009	2,849	5.2	- 5.3	362	1-2 PM	SUN	23	3,909	SAT	15	2,849	2,690	1.06
US 400	1.5 MILES E. OF LEON	BUTLER	4,492	4,763	4,386	- 2.4	- 7.9	467	6-7 PM	FRI	21	5,568	FRI	14	4,386	4,365	1.00
US 77	3.7 MILES N. OF ARKANSAS CITY	COWLEY	11,030	11,576	9,085	- 17.6	- 21.5	1,104	3-4 PM	FRI	7	10,400	FRI	7	9,085	9,882	.92
US 160	6.2 MILES E. OF ATTICA	HARPER	1,367	1,460	1,372	0.4	- 6.0	167	6-7 PM	FRI	14	1,764	FRI	14	1,372	1,459	.94
US 50	3 MILES N.E. OF NEWTON	HARVEY	6,307	6,758	6,552	3.9	- 3.0	694	5-6 PM	FRI	14	7,803	FRI	28	6,552	6,543	1.00
US 54	5.8 MILES W. OF KINGMAN	KINGMAN	5,023	5,197	5,028	0.1	- 3.3	492	4-5 PM	FRI	21	6,185	FRI	28	5,028	5,058	.99
US 54	1.5 MILES W. OF HAVILAND	KIOWA	5,250	5,247	5,228	- 0.4	- 0.4	507	5-6 PM	FRI	14	6,307	FRI	14	5,228	5,365	.97
US 183	7 MILES S. OF GREENSBURG	KIOWA	930	977	931	0.1	- 4.7	108	4-5 PM	THU	6	1,153	FRI	7	931	1,031	.90
US 56	5 MILES S.W. OF LARNED	PAWNEE	2,117	2,264	2,237	5.7	- 1.2	248	4-5 PM	FRI	7	2,720	FRI	14	2,237	2,325	.96
K 61	5 MILES S.W. OF ARLINGTON	RENO	2,184	2,213	2,085	- 4.5	- 5.8	208	4-5 PM	FRI	21	2,450	FRI	28	2,085	2,104	.99
K 14	1 MILE N. OF LYONS	RICE	1,471	1,459	1,472	0.1	0.9	183	5-6 PM	FRI	14	1,953	FRI	14	1,472	1,599	.92
K 42	3 MILES N.E. OF VIOLA	SEDGWICK	4,099	4,384													
US 281	0.5 MILES S. OF ST. JOHN	STAFFORD	2,433	2,501	2,454	0.9	- 1.9	249	5-6 PM	THU	6	2,997	FRI	21	2,454	2,634	.93
US 81	4.1 MILES S. OF WELLINGTON	SUMNER	1,821	1,850	1,741	- 4.4	- 5.9	181	4-5 PM	FRI	14	2,052	FRI	28	1,741	1,806	.96

- 2.9 - 7.5

Percent of Change for District 5 Stations

Rural State Highways for District 6

US 83	8.2 MILES S. OF GARDEN CITY	FINNEY	3,962	4,187	4,190	5.8	0.1	398	5-6 PM	THU	27	4,854	FRI	14	4,190	4,478	.94
K 25	2.5 MILES N. OF ULYSSES	GRANT	1,554	1,567	1,538	- 1.0	- 1.9	195	4-5 PM	THU	6	1,942	TUE	4	1,538	1,700	.90
K 27	15 MILES N OF TRIBUNE	GREELEY	552	743	811	46.9	9.2	98	9-10 AM	MON	24	1,112	FRI	21	811	923	.88
US 50	0.8 MILES E. OF KAN-COLO ST. LINE	HAMILTON	1,437	1,604	1,521	5.8	- 5.2	157	4-5 PM	FRI	28	1,813	FRI	14	1,521	1,565	.97
US 283	8.3 MILES N. OF JETMORE	HODGEMAN	801	886	918	14.6	3.6	119	6-7 PM	FRI	21	1,241	FRI	14	918	1,008	.91
US 54	3.7 MILES W. OF MEADE	MEADE	3,766	3,831													
K 96	12 MILES W. OF SCOTT CITY	WICHITA	1,127	1,310	1,351	19.9	3.1	151	5-6 PM	MON	10	1,676	THU	13	1,351	1,495	.90

9.5 .3

Percent of Change for District 6 Stations

Month of October, 2011

Sparse Matrix Model

Date: 08-DEC-2011

Average Daily Traffic
for the Month

Percent Change
Month

Maximum Hour
Volume Hour DOW Day

Maximum Day
Volume DOW Day

7 Day Avg
5 Day Avg
7 Day / 5 Day Avg

Route Description Location Description County

2009 2010 2011 2009 2010

Rural Secondary Stations

RS 61	6.5 MILES S.W. OF HIAWATHA	BROWN	292	301	227	- 22.3	- 24.6	44	12-1 PM	MON	17	282	WED	12	227	236	.96
RS 463	0.7 MILES S.W. OF BELOIT	MITCHELL	260	292	258	- 0.8	- 11.6	44	5-6 PM	MON	10	336	THU	13	258	284	.91
RS 272	2 MILES S. OF QUINTER	GOVE	396	413	392	- 1.0	- 5.1	56	1-2 PM	FRI	28	478	TUE	25	392	418	.94
RS 13	0.5 MILES N. OF BUSH CITY	ANDERSON	336	379	360	7.1	- 5.0	55	1-2 PM	THU	6	456	THU	6	360	373	.97
RS 18	3 MILES E. OF PARSONS	LABETTE	1,987	1,943	1,896	- 4.6	- 2.4	217	3-4 PM	FRI	14	2,323	FRI	28	1,896	2,048	.93
RS 303	0.8 MI. S. OF US-54 & K17 JCT. (MIDWAY)	KINGMAN	332		299	- 9.9		45	12-1 PM	SUN	23	393	SAT	15	299	305	.98
RS 251	6 MILES W. OF FORD	FORD	531	443	414	- 22.0	- 6.5	58	3-4 PM	FRI	14	578	FRI	14	414	425	.97

Percent of Change for Rural Secondary Stations

- 7.0 - 5.9

Reservoir Stations

K 237	1.5 MILES N. OF JCT. US 24	JEFFERSON	1,120	1,418	1,171	4.6	- 17.4	144	5-6 PM	FRI	21	1,560	SAT	15	1,171	1,130	1.04
LOCAL ROAD	KANOPOLIS RESERVOIR N. OF DAM	ELLSWORTH	82	228	149	81.7	- 34.6					343	SAT	1	149	107	1.39
LOCAL ROAD	KANOPOLIS RESERVOIR S. OF DAM	ELLSWORTH	151	256	217	43.7	- 15.2					513	SAT	22	217	166	1.31
LOCAL ROAD	CEDAR BLUFF RESERVOIR N. OF DAM	TREGO	21	10	74	252.4	640.0					287	SUN	2	74	46	1.61

Percent of Change for Reservoir Stations

17.2 - 15.7

Kansas City Stations

US 69	0.8 MILES N. OF 167TH ST	JOHNSON	26,689	29,160	28,609	7.2	- 1.9	3,068	7-8 AM	WED	5	32,573	FRI	14	28,609	29,589	.97
135TH	135TH E. OF MUR-LEN	JOHNSON	34,142	38,047	34,919	2.3	- 8.2	3,439	5-6 PM	FRI	21	40,482	FRI	14	34,919	36,217	.96
BLACKBOB	BLACKBOB RD. S. OF 139TH	JOHNSON	22,461	22,228													
I 435	0.8 MILES S. OF I - 70	WYANDOTTE	60,873	62,726	59,039	- 3.0	- 5.9	6,642	5-6 PM	FRI	28	69,437	FRI	28	59,039	63,036	.94

Percent of Change for Kansas City Stations

.7 - 5.7

Salina Stations

OHIO ST.	OHIO ST. N. OF WESTCHESTER DR.	SALINE	17,540	17,952													
----------	--------------------------------	--------	--------	--------	--	--	--	--	--	--	--	--	--	--	--	--	--

Percent of Change for Salina Stations

Topeka Stations

WANAMAHER	WANAMAHER RD. N. OF 33RD ST.	SHAWNEE	10,747	12,033													
45TH ST.	45TH ST. E. OF INDIANA	SHAWNEE	6,664	8,178	7,317	9.8	- 10.5	796	5-6 PM	THU	13	8,916	FRI	7	7,317	7,527	.97
W. 10TH ST.	10TH STREET WEST OF WASHBURN	SHAWNEE	11,045	10,814													
N. TOPEKA	TOPEKA BLVD. NORTH OF PARAMORE ST.	SHAWNEE	18,690	19,114	19,406	3.8	1.5	1,963	11-12 AM	SAT	8	23,092	FRI	28	19,406	21,064	.92
I 70	I 70 E. OF MACVICAR ST.	SHAWNEE	46,382	47,864	43,831	- 5.5	- 8.4	4,909	4-5 PM	FRI	14	55,955	FRI	7	43,831	47,978	.91
I 470	I 470 N.W. OF HUNTOON	SHAWNEE	33,759	35,622													
US 40	US 40 E. OF TECUMSEH RD.	SHAWNEE	4,819	5,241	4,973	3.2	- 5.1	782	5-6 PM	TUE	25	6,130	TUE	25	4,973	5,437	.91
US 75	US 75 N. OF S.W. 57TH	SHAWNEE	14,399	14,732	14,285	- 0.8	- 3.0	1,601	7-8 AM	WED	19	16,667	FRI	28	14,285	15,475	.92

Percent of Change for Topeka Stations

- 1.3 - 5.6

Month of October, 2011

Sparse Matrix Model

Date: 08-DEC-2011

---- Average Daily Traffic ----			Percent Change		---- Maximum Hour ----			--- Maximum Day ---			7 Day	5 Day	7 Day /	
for the Month			Month		Volume	Hour	DOW	Day	Volume	DOW	Day	Avg	Avg	5 Day
2009	2010	2011	2009	2010										Avg

Route Description	Location Description	County
-------------------	----------------------	--------

Wichita Stations

K 96	K-96 E. OF GREENWICH RD.	SEDGWICK	23,749	23,911	23,586	- 0.7	- 1.4	2,773	7-8 AM	TUE	25	27,113	FRI	28	23,586	25,706	.92
US 54	KELLOGG E. OF WEST ST.	SEDGWICK			87,583			8,773	5-6 PM	THU	27	103,931	FRI	21	87,583	95,838	.91
13TH ST.	13TH ST W. OF PINECREST	SEDGWICK	17,041	16,336	14,517	- 14.8	- 11.1	1,597	5-6 PM	THU	27	16,849	FRI	7	14,517	15,772	.92
ROCK RD.	ROCK RD. S. OF CENTRAL AVE	SEDGWICK	31,559	32,213	29,908	- 5.2	- 7.2	2,969	4-5 PM	FRI	28	35,573	FRI	28	29,908	31,087	.96
21ST ST.	21ST ST E. OF WASHINGTON	SEDGWICK	13,769	8,477	12,523	- 9.0	47.7	1,316	4-5 PM	FRI	21	14,670	FRI	21	12,523	13,435	.93
HILLSIDE ST.	HILLSIDE S. OF 15TH ST	SEDGWICK	14,230	12,045													
I 235	I 235 S. OF MAPLE ST	SEDGWICK	51,720	51,311	46,779	- 9.6	- 8.8	4,858	5-6 PM	THU	27	55,468	FRI	28	46,779	50,607	.92
I 135	I-135 N. OF 21ST ST.	SEDGWICK	61,636	65,244	66,744	8.3	2.3	7,089	5-6 PM	THU	20	79,486	FRI	28	66,744	75,415	.89

Percent of Change for Wichita Stations

- 2.7 - 1.7

NOTE: * Excluded from Percent Change Totals