

**KANSAS DEPARTMENT OF TRANSPORTATION  
BUREAU OF TRANSPORTATION PLANNING**

**OCTOBER 2010**

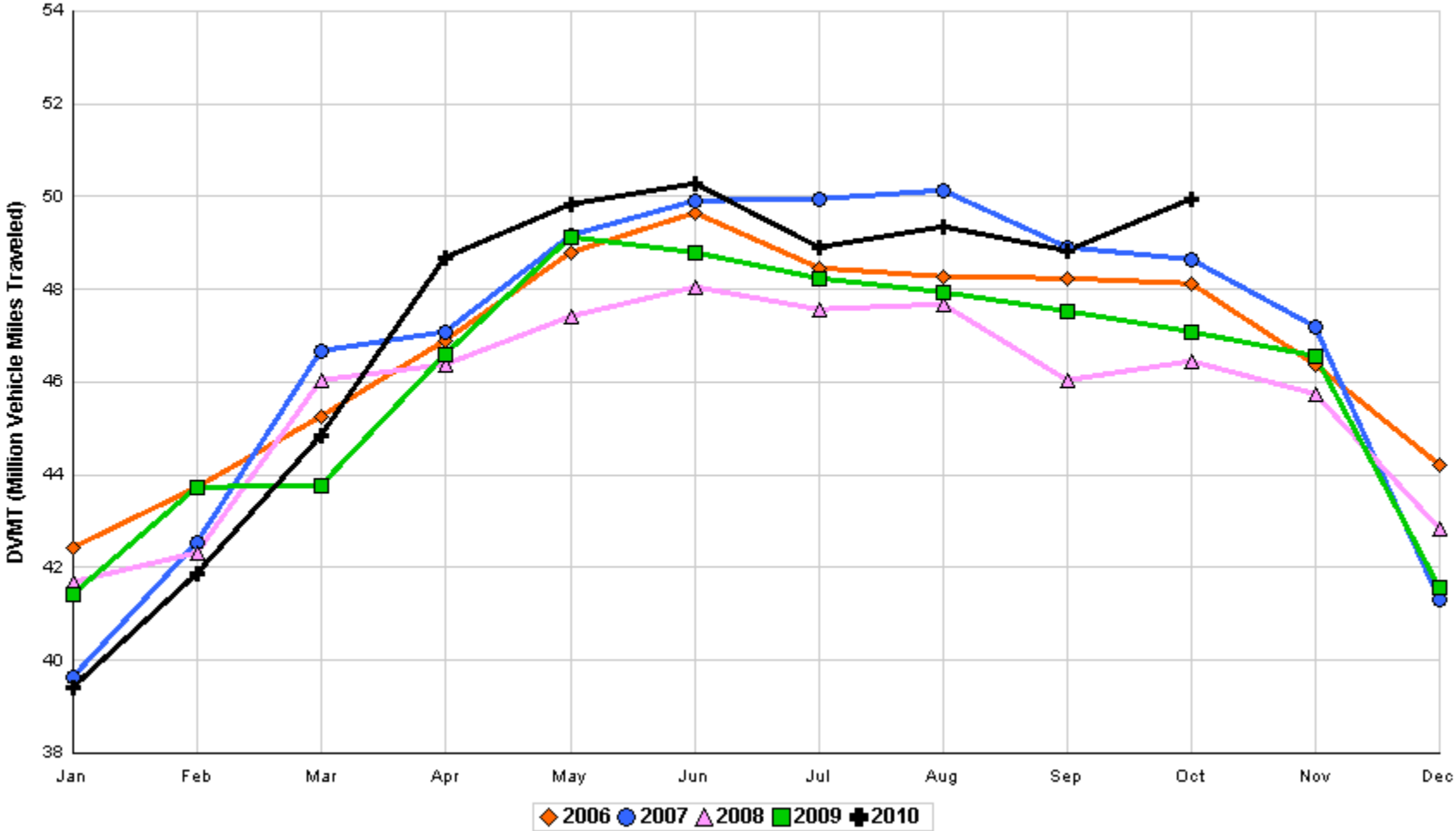
**SIGNIFICANT FACTS AND TRENDS**



Travel on the Kansas State Highway System				
	Daily Vehicle Miles		% Change	
	(In Millions )		2009 to 2010	
Month	2009	2010	Month	Year
Jan	41.421	39.400	- 4.9	- 4.9
Feb	43.731	41.874	- 4.2	- 4.6
Mar	43.756	44.864	2.5	- 2.1
Apr	46.605	48.668	4.4	- 0.4
May	49.138	49.819	1.4	0.0
Jun	48.804	50.287	3.0	0.5
Jul	48.235	48.919	1.4	0.7
Aug	47.944	49.350	2.9	1.0
Sep	47.523	48.819	2.7	1.2
Oct	47.090	49.930	6.0	1.7
Nov	46.562			
Dec	41.576			
Average	46.032			

**Contact the Traffic and Field Operations Unit with questions or requests at:  
(785)-296-3841 or E-mail: [TrafficCounts@ksdot.org](mailto:TrafficCounts@ksdot.org)  
The Monthly Average Daily Traffic (MADT) is Calculated Utilizing the  
Day-Of-Week (DOW) Method. Missing Traffic Count Data will Not be Estimated  
Therefore Station Summary Data will be Blank where Data is Not Available.**

Total Travel on Kansas State Highway System 2006 - 2010



Month of October, 2010

Sparse Matrix Model

Date: 02-DEC-2010

---- Average Daily Traffic ----  
for the Month  
2008 2009 2010  
Percent Change  
Month  
2008 2009

---- Maximum Hour ----  
Volume Hour DOW Day  
--- Maximum Day ---  
Volume DOW Day  
7 Day Avg  
5 Day Avg  
7 Day / 5 Day Avg

Route Description	Location Description	County	2008	2009	2010	2008	2009	Volume	Hour	DOW	Day	Volume	DOW	Day	7 Day Avg	5 Day Avg	7 Day / 5 Day Avg
-------------------	----------------------	--------	------	------	------	------	------	--------	------	-----	-----	--------	-----	-----	-----------	-----------	-------------------

Rural State Highways for District 1

US-75	1.2 MILES N. OF US-36 I.C.	BROWN	3,471	3,548	3,990	15.0	12.5	422	5-6 PM	FRI	15	4,938	FRI	8	3,990	4,124	.97
US 24	1.5 MILES N.E. OF LAWRENCE	DOUGLAS	7,628	7,637	7,338	- 3.8	- 3.9	978	5-6 PM	FRI	1	9,282	FRI	1	7,338	7,500	.98
US 56	4 MILES E. OF OVERBROOK	DOUGLAS	1,960	1,958	2,115	7.9	8.0	359	4-5 PM	SAT	16	3,881	SAT	16	2,115	2,005	1.05
US 75	5.8 MILES N. OF HOLTON	JACKSON	6,029		6,255	3.7		669	5-6 PM	FRI	15	7,619	FRI	1	6,255	6,286	1.00
K 10	0.2 MILES E. OF RS. 346 INTCHG.	JOHNSON	32,138	34,131	35,500	10.5	4.0	4,610	4-5 PM	THU	14	44,361	THU	14	35,500	37,087	.96
K 99	2.9 MILES S. OF EMPORIA	LYON	4,004	3,983	4,045	1.0	1.6	452	5-6 PM	FRI	29	4,969	FRI	29	4,045	4,268	.95
US 36	13 MILES E. OF MARYSVILLE	MARSHALL	2,388	2,449	2,589	8.4	5.7	308	6-7 PM	FRI	8	3,232	FRI	8	2,589	2,678	.97
K 68	0.15 MILES E. OF JCT K 268	OSAGE	2,653	2,655	2,834	6.8	6.7	343	5-6 PM	FRI	1	3,525	FRI	1	2,834	2,797	1.01
K 268	0.1 MILES E. OF US 75	OSAGE	2,727	2,763	2,963	8.7	7.2	404	9-10 AM	SAT	9	3,671	FRI	8	2,963	2,978	.99
K 18	0.7 MILES N.E. OF OGDEN	RILEY	22,171	24,786	25,490	15.0	2.8	3,240	4-5 PM	FRI	29	34,274	FRI	29	25,490	27,535	.93
US 24	4 MILES N. OF MANHATTAN	RILEY	6,561	6,603	7,257	10.6	9.9	802	4-5 PM	THU	7	9,432	FRI	8	7,257	7,341	.99
K 4	1MI. S. OF JCT. US-24	SHAWNEE	8,807	8,593													
US 24	1 MILE N.W. OF ROSSVILLE	SHAWNEE	5,357	4,640	4,783	- 10.7	3.1	543	5-6 PM	FRI	1	6,048	FRI	1	4,783	5,024	.95
I 70	4.7 MILES E. OF K 30 INTCHG. (MAPLE HILL)	WABAUNSEE		20,198	20,649		2.2	2,554	8-9 AM	SAT	30	26,948	FRI	8	20,649	20,002	1.03

Percent of Change for District 1 Stations

8.3 3.6

Rural State Highways for District 2

K 9	5.8 MILES E. OF CLIFTON	CLAY	309	321	337	9.1	5.0	50	6-7 PM	FRI	15	409	THU	14	337	367	.92
K 15	3.3 MILES N. OF CLAY CENTER	CLAY	1,903	1,907	1,969	3.5	3.3	236	5-6 PM	FRI	8	2,521	FRI	8	1,969	2,095	.94
I 70	W. OF K-232 INTCHG. (WILSON)	ELLSWORTH	9,289	9,719	9,808	5.6	0.9	1,058	4-5 PM	SUN	3	12,366	FRI	1	9,808	9,612	1.02
K 141	2.8 MILES S. OF KANOPOLIS DAM	ELLSWORTH	448	421	505	12.7	20.0	122	11-12 AM	SAT	2	692	SAT	2	505	470	1.07
K 18	1.8 MILES W. OF JUNCTION CITY	GEARY	1,241	1,191	1,541	24.2	29.4	203	7-8 AM	MON	25	1,888	FRI	8	1,541	1,642	.94
I 70	4.5 MILES S.W. OF JUNCTION CITY	GEARY	16,029	16,740	16,991	6.0	1.5	2,069	3-4 PM	THU	7	21,606	THU	7	16,991	16,876	1.01
US 77	4 MILES S. OF JUNCTION CITY	GEARY	3,682	3,837	4,490	21.9	17.0	724	8-9 AM	SAT	30	6,398	SAT	30	4,490	4,546	.99
US 36	1 MILE E. OF MANKATO	JEWELL	1,868	1,770	1,900	1.7	7.3	214	5-6 PM	FRI	1	2,554	FRI	1	1,900	2,024	.94
K 18	0.5 MILES W. OF LINCOLN	LINCOLN	981	1,009	1,032	5.2	2.3	130	4-5 PM	FRI	15	1,219	FRI	8	1,032	1,084	.95
I 135	0.5 MILES N. OF US 56 INTCHG. (MCPHERSON)	MCPHERSON	11,889	11,732	10,900	- 8.3	- 7.1	1,221	5-6 PM	FRI	8	13,338	FRI	15	10,900	10,938	1.00
K 14	3 MILES S. OF BELOIT	MITCHELL	719	852	880	22.4	3.3	113	5-6 PM	FRI	15	1,148	FRI	8	880	954	.92
US 81	2.5 MILES S. OF BELLEVILLE	REPUBLIC	4,596	4,700	5,061	10.1	7.7	535	3-4 PM	FRI	22	6,443	FRI	15	5,061	5,159	.98

Percent of Change for District 2 Stations

4.6 2.2

Rural State Highways for District 3

US 83	6.2 MILES S. OF OAKLEY	LOGAN	1,598	1,562	1,863	16.6	19.3	190	2-3 PM	THU	28	2,172	THU	14	1,863	2,003	.93
US 36	9.5 MILES W. OF NORTON	NORTON	882	872	1,006	14.1	15.4	109	5-6 PM	FRI	8	1,188	FRI	8	1,006	1,077	.93
US 183	1.2 MILES S. OF PHILLIPSBURG	PHILLIPS	2,352	2,332	2,377	1.1	1.9	263	5-6 PM	FRI	15	2,802	FRI	15	2,377	2,479	.96
K 23	14.5 MILES S. OF HOXIE	SHERIDAN	754	743	766	1.6	3.1	98	6-7 PM	FRI	15	1,008	FRI	15	766	803	.95
I 70	2.2 MI. E OF KANORADO EXIT	SHERMAN	7,131	7,218	7,534	5.7	4.4	763	4-5 PM	SUN	17	9,031	FRI	1	7,534	7,555	1.00
US 24	7.3 MILES E. OF COLBY	THOMAS	1,724	1,733	1,876	8.8	8.3	202	5-6 PM	FRI	15	2,295	FRI	1	1,876	2,007	.93
K 25	1.8 MILES S. OF COLBY	THOMAS	789	797	903	14.4	13.3	102	4-5 PM	MON	4	1,134	MON	4	903	1,002	.90
I 70	1 MILE W. OF WAKEENEY	TREGO	8,706	8,358	8,935	2.6	6.9	897	3-4 PM	SUN	17	10,721	FRI	8	8,935	9,017	.99
US 40	1.4 MILES E. OF KAN-COLO ST. LINE	WALLACE	440	458	550	25.0	20.1	74	6-7 PM	FRI	15	743	FRI	15	550	598	.92

Percent of Change for District 3 Stations

5.9 7.2

Month of October, 2010

Sparse Matrix Model

Date: 02-DEC-2010

Route Description	Location Description	County	Average Daily Traffic for the Month			Percent Change Month		Maximum Hour				Maximum Day			7 Day Avg	5 Day Avg	7 Day / 5 Day Avg
			2008	2009	2010	2008	2009	Volume	Hour	DOW	Day	Volume	DOW	Day			
<b>Rural State Highways for District 4</b>																	
US 54	3 MILES W. OF IOLA	ALLEN	2,927	2,983	3,103	6.0	4.0	333	4-5 PM	FRI	8	3,913	FRI	1	3,103	3,191	.97
US 169	1 MILE N. OF GREELEY	ANDERSON	3,408	3,353	3,423	0.4	2.1	379	5-6 PM	FRI	1	4,200	FRI	15	3,423	3,499	.98
US 69	2 MILES N. OF FT SCOTT	BOURBON	5,326		6,278	17.9		718	5-6 PM	FRI	15	8,146	FRI	15	6,278	6,268	1.00
US 166	0.5 MILES W. OF NIOTAZE	CHAUTAUQUA	2,455	2,419	2,629	7.1	8.7	276	3-4 PM	FRI	15	3,368	FRI	1	2,629	2,679	.98
I 35	2 MILES W. OF K- 131 INTCHG. N. OF LEBO	COFFEY	13,016		13,694	5.2		1,759	5-6 PM	SUN	24	16,980	SUN	24	13,694	13,299	1.03
US 59	4.3 MILES S. OF OTTAWA	FRANKLIN	5,887	6,033	6,181	5.0	2.5	660	5-6 PM	FRI	15	7,666	FRI	15	6,181	6,273	.99
I 35	2 MILES N.E. OF THE WELLSVILLE INTCHG.	FRANKLIN	18,184	19,765													
US 400	3 MILES E. OF PARSONS	LABETTE	3,447	3,595	3,800	10.2	5.7	400	5-6 PM	FRI	1	5,085	FRI	1	3,800	3,854	.99
US 59	4 MILES S. OF ERIE	NEOSHO	3,191	3,100	3,110	- 2.5	0.3	369	5-6 PM	FRI	22	4,037	FRI	15	3,110	3,380	.92
US 169	1 MILE N. OF THAYER	NEOSHO	4,322	4,250	4,289	- 0.8	0.9	490	5-6 PM	FRI	15	5,686	FRI	15	4,289	4,501	.95
US 75	1 MILE N. OF YATES CENTER	WOODSON	2,703	2,721	2,881	6.6	5.9	366	5-6 PM	FRI	8	3,757	FRI	8	2,881	2,903	.99
K 105	2 MILES N. OF TORONTO	WOODSON	641	629	681	6.2	8.3	86	10-11 PM	FRI	1	1,214	FRI	1	681	664	1.03

Percent of Change for District 4 Stations

5.8 3.5

Rural State Highways for District 5

US 56	5.5 MILES E. OF GREAT BEND	BARTON	4,995	4,925	5,405	8.2	9.7	558	5-6 PM	FRI	8	6,393	FRI	15	5,405	5,654	.96
US 77	2 MILES N. OF EL DORADO	BUTLER	2,639	2,707	3,009	14.0	11.2	721	4-5 PM	MON	11	3,979	SAT	16	3,009	2,905	1.04
US 400	1.5 MILES E. OF LEON	BUTLER	4,386	4,492	4,763	8.6	6.0	498	2-3 PM	FRI	1	6,307	FRI	1	4,763	4,733	1.01
US 77	3.7 MILES N. OF ARKANSAS CITY	COWLEY	11,016	11,030	11,576	5.1	5.0	1,143	4-5 PM	FRI	1	14,226	FRI	1	11,576	12,275	.94
US 160	6.2 MILES E. OF ATTICA	HARPER	1,423	1,367	1,460	2.6	6.8	165	6-7 PM	THU	28	1,754	FRI	15	1,460	1,524	.96
US 50	3 MILES N.E. OF NEWTON	HARVEY	6,303	6,307	6,758	7.2	7.2	749	5-6 PM	FRI	15	8,287	FRI	15	6,758	6,788	1.00
US 54	5.8 MILES W. OF KINGMAN	KINGMAN	4,720	5,023	5,197	10.1	3.5	531	5-6 PM	FRI	22	6,172	FRI	8	5,197	5,284	.98
US 54	1.5 MILES W. OF HAVILAND	KIOWA	5,101	5,250	5,247	2.9	- 0.1	536	6-7 PM	FRI	8	6,256	FRI	8	5,247	5,419	.97
US 183	7 MILES S. OF GREENSBURG	KIOWA	965	930	977	1.2	5.1	116	6-7 PM	FRI	1	1,259	FRI	1	977	1,070	.91
US 56	5 MILES S.W. OF LARNED	PAWNEE	2,054	2,117	2,264	10.2	6.9	288	5-6 PM	FRI	1	2,785	FRI	1	2,264	2,360	.96
K 61	5 MILES S.W. OF ARLINGTON	RENO	2,124	2,184	2,213	4.2	1.3	243	5-6 PM	FRI	1	2,577	FRI	15	2,213	2,237	.99
K 14	1 MILE N. OF LYONS	RICE	1,407	1,471	1,459	3.7	- 0.8	180	6-7 PM	FRI	22	1,863	FRI	22	1,459	1,529	.95
K 42	3 MILES N.E. OF VIOLA	SEDGWICK	4,252	4,099	4,384	3.1	7.0	477	5-6 PM	FRI	8	5,043	FRI	8	4,384	4,668	.94
US 281	0.5 MILES S. OF ST. JOHN	STAFFORD	2,449	2,433	2,501	2.1	2.8	268	4-5 PM	FRI	1	3,176	FRI	1	2,501	2,685	.93
US 81	4.1 MILES S. OF WELLINGTON	SUMNER	1,801	1,821	1,850	2.7	1.6	193	5-6 PM	FRI	29	2,169	FRI	1	1,850	1,920	.96

Percent of Change for District 5 Stations

6.5 5.7

Rural State Highways for District 6

US 83	8.2 MILES S. OF GARDEN CITY	FINNEY	3,881	3,962	4,187	7.9	5.7	417	5-6 PM	FRI	1	4,911	FRI	1	4,187	4,430	.95
US 50	3.3 MILES W. OF DODGE CITY	FORD	5,694	5,451													
K 25	2.5 MILES N. OF ULYSSES	GRANT	1,460	1,554	1,567	7.3	0.8	158	9-10 AM	WED	20	1,881	WED	20	1,567	1,692	.93
K 27	15 MILES N OF TRIBUNE	GREELEY	537	552	743	38.4	34.6	86	1-2 PM	FRI	8	953	FRI	8	743	814	.91
US 50	0.8 MILES E. OF KAN-COLO ST. LINE	HAMILTON	1,460	1,437	1,604	9.9	11.6	178	3-4 PM	FRI	8	2,018	FRI	1	1,604	1,671	.96
US 283	8.3 MILES N. OF JETMORE	HODGEMAN	764	801	886	16.0	10.6	109	6-7 PM	FRI	8	1,147	FRI	8	886	965	.92
US 54	3.7 MILES W. OF MEADE	MEADE	3,537	3,766	3,831	8.3	1.7	340	5-6 PM	FRI	29	4,341	FRI	22	3,831	3,921	.98
K 96	12 MILES W. OF SCOTT CITY	WICHITA	1,164	1,127	1,310	12.5	16.2	140	6-7 PM	FRI	1	1,622	FRI	1	1,310	1,406	.93

Percent of Change for District 6 Stations

10.3 7.0

Month of October, 2010

Sparse Matrix Model

Date: 02-DEC-2010

---- Average Daily Traffic ----  
for the Month  
2008 2009 2010  
Percent Change  
Month  
2008 2009

---- Maximum Hour ----  
Volume Hour DOW Day  
--- Maximum Day ---  
Volume DOW Day  
7 Day Avg  
5 Day Avg  
7 Day / 5 Day Avg

Route Description Location Description County

Rural Secondary Stations

RS 61	6.5 MILES S.W. OF HIAWATHA	BROWN	267	292	301	12.7	3.1	42	3-4 PM	FRI	1	384	FRI	1	301	317	.95
RS 463	0.7 MILES S.W. OF BELOIT	MITCHELL	256	260	292	14.1	12.3	39	3-4 PM	TUE	12	374	FRI	15	292	310	.94
RS 272	2 MILES S. OF QUINTER	GOVE	400	396	413	3.3	4.3	54	12-1 PM	SUN	3	527	TUE	5	413	426	.97
RS 13	0.5 MILES N. OF BUSH CITY	ANDERSON	344	336	379	10.2	12.8	60	10-11 AM	SAT	30	466	SAT	9	379	391	.97
RS 18	3 MILES E. OF PARSONS	LABETTE	1,756	1,987	1,943	10.6	- 2.2	230	3-4 PM	THU	28	2,570	FRI	1	1,943	2,109	.92
RS 303	0.8 MI. S. OF US-54 & K17 JCT. (MIDWAY)	KINGMAN	332	332													
RS 251	6 MILES W. OF FORD	FORD	401	531	443	10.5	- 16.6	63	5-6 PM	FRI	29	572	FRI	29	443	458	.97

Percent of Change for Rural Secondary Stations

10.1 - .8

Reservoir Stations

K 237	1.5 MILES N. OF JCT. US 24	JEFFERSON	1,104	1,120	1,418	28.4	26.6	174	2-3 PM	SAT	9	1,834	SAT	9	1,418	1,390	1.02
LOCAL ROAD	KANOPOLIS RESERVOIR N. OF DAM	ELLSWORTH	198	82	228	15.2	178.0					376	SUN	24	228	215	1.06
LOCAL ROAD	KANOPOLIS RESERVOIR S. OF DAM	ELLSWORTH	208	151	256	23.1	69.5					420	SUN	3	256	242	1.06
LOCAL ROAD	CEDAR BLUFF RESERVOIR N. OF DAM	TREGO	32	21	10	- 68.8	- 52.4					34	TUE	12	10	10	1.00

Percent of Change for Reservoir Stations

24.0 39.2

Kansas City Stations

I 35	0.5 MILES S.W. OF 87TH ST INTCHG.	JOHNSON			94,915			8,982	7-8 AM	TUE	12	110,932	FRI	1	94,915	104,183	.91
US 69	0.8 MILES N. OF 167TH ST	JOHNSON		26,689	29,160		9.3	2,993	7-8 AM	WED	6	32,215	FRI	8	29,160	29,337	.99
135TH	135TH E. OF MUR-LEN	JOHNSON	33,070	34,142	38,047	15.0	11.4	3,699	5-6 PM	TUE	5	43,597	FRI	1	38,047	39,508	.96
BLACKBOB	BLACKBOB RD. S. OF 139TH	JOHNSON	22,402	22,461	22,228	- 0.8	- 1.0	2,231	5-6 PM	FRI	29	25,740	SAT	9	22,228	22,442	.99
I 435	0.8 MILES S. OF I - 70	WYANDOTTE	60,098	60,873	62,726	4.4	3.0	7,518	5-6 PM	FRI	1	78,486	FRI	1	62,726	66,288	.95

Percent of Change for Kansas City Stations

6.4 5.5

Salina Stations

OHIO ST.	OHIO ST. N. OF WESTCHESTER DR.	SALINE	17,520	17,540	17,952	2.5	2.3	1,726	2-3 PM	FRI	8	21,737	FRI	8	17,952	19,452	.92
----------	--------------------------------	--------	--------	--------	--------	-----	-----	-------	--------	-----	---	--------	-----	---	--------	--------	-----

Percent of Change for Salina Stations

2.5 2.3

Topeka Stations

WANAMAKER	WANAMAKER RD. N. OF 33RD ST.	SHAWNEE	10,292	10,747	12,033	16.9	12.0	1,274	5-6 PM	FRI	8	14,445	FRI	8	12,033	12,509	.96
45TH ST.	45TH ST. E. OF INDIANA	SHAWNEE	6,783	6,664	8,178	20.6	22.7	916	5-6 PM	TUE	5	9,444	FRI	15	8,178	8,406	.97
W. 10TH ST.	10TH STREET WEST OF WASHBURN	SHAWNEE	12,584	11,045	10,814	- 14.1	- 2.1	1,198	3-4 PM	FRI	29	13,478	FRI	1	10,814	12,265	.88
TYLER ST.	TYLER ST. N. OF LAURENT ST.	SHAWNEE	585	610	646	10.4	5.9	104	11-12 AM	FRI	8	927	FRI	1	646	802	.81
N. TOPEKA	TOPEKA BLVD. NORTH OF PARAMORE ST.	SHAWNEE	20,169	18,690	19,114	- 5.2	2.3	1,943	11-12 AM	SAT	9	22,854	FRI	15	19,114	20,776	.92
I 70	I 70 E. OF MACVICAR ST.	SHAWNEE	44,437	46,382	47,864	7.7	3.2	5,173	4-5 PM	FRI	1	59,543	FRI	8	47,864	51,441	.93
I 470	I 470 N.W. OF HUNTOON	SHAWNEE	34,536	33,759	35,622	3.1	5.5	3,937	4-5 PM	FRI	15	42,606	FRI	15	35,622	37,888	.94
US 40	US 40 E. OF TECUMSEH RD.	SHAWNEE	4,978	4,819	5,241	5.3	8.8	719	5-6 PM	WED	20	6,382	FRI	8	5,241	5,766	.91
US 75	US 75 N. OF S.W. 57TH	SHAWNEE	14,685	14,399	14,732	0.3	2.3	1,687	7-8 AM	TUE	5	17,203	FRI	29	14,732	15,934	.92

Percent of Change for Topeka Stations

3.5 4.8

Month of October, 2010

Sparse Matrix Model

Date: 02-DEC-2010

---- Average Daily Traffic ----			Percent Change		---- Maximum Hour ----				-- Maximum Day --			7 Day	5 Day	7 Day /	
for the Month			Month		Volume	Hour	DOW	Day	Volume	DOW	Day	Avg	Avg	5 Day	
2008	2009	2010	2008	2009											

Route Description	Location Description	County
-------------------	----------------------	--------

Wichita Stations

K 96	K-96 E. OF GREENWICH RD.	SEDGWICK	23,361	23,749	23,911	2.4	0.7	2,790	5-6 PM	WED	6	27,631	FRI	29	23,911	26,082	.92
US 54	KELLOGG E. OF WEST ST.	SEDGWICK	90,450														
13TH ST.	13TH ST W. OF PINECREST	SEDGWICK	16,441	17,041	16,336	- 0.6	- 4.1	1,674	5-6 PM	TUE	26	19,460	FRI	1	16,336	17,618	.93
ROCK RD.	ROCK RD. S. OF CENTRAL AVE	SEDGWICK		31,559	32,213		2.1	3,022	3-4 PM	FRI	1	37,959	FRI	1	32,213	33,560	.96
21ST ST.	21ST ST E. OF WASHINGTON	SEDGWICK	14,053	13,769	8,477	- 39.7	- 38.4	972	4-5 PM	FRI	1	10,753	FRI	1	8,477	9,344	.91
HILLSIDE ST.	HILLSIDE S. OF 15TH ST	SEDGWICK	12,224	14,230	12,045	- 1.5	- 15.4	1,174	5-6 PM	THU	7	14,350	FRI	8	12,045	13,497	.89
I 235	I 235 S. OF MAPLE ST	SEDGWICK	49,947	51,720	51,311	2.7	- 0.8	5,194	5-6 PM	THU	21	59,859	FRI	15	51,311	55,505	.92
I 135	I-135 N. OF 21ST ST.	SEDGWICK		61,636	65,244		5.9	6,786	5-6 PM	WED	27	78,155	FRI	29	65,244	73,629	.89

Percent of Change for Wichita Stations

- 3.4 - 1.9

NOTE: \* Excluded from Percent Change Totals