

**KANSAS DEPARTMENT OF TRANSPORTATION
BUREAU OF TRANSPORTATION PLANNING**

OCTOBER 2008

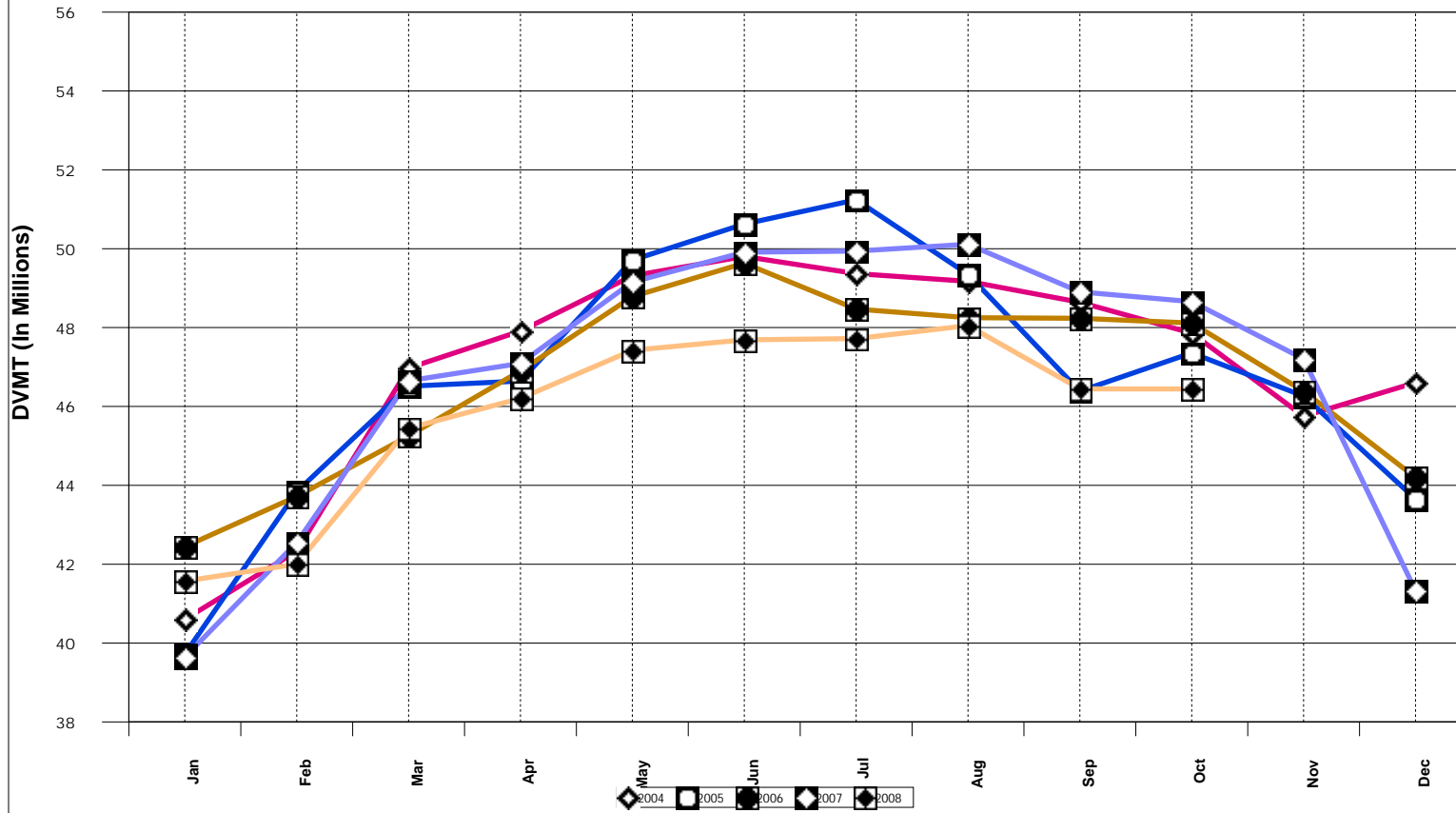
SIGNIFICANT FACTS AND TRENDS



Travel on the Kansas State Highway System				
	Daily Vehicle Miles		% Change	
	(In Millions)		2007 to 2008	
Month	2007	2008	Month	Year
Jan	39.644	41.571	4.9	4.9
Feb	42.551	42.002	- 1.3	1.7
Mar	46.653	45.45	- 2.6	0.1
Apr	47.094	46.205	- 1.9	- 0.4
May	49.156	47.424	- 3.5	- 1.1
Jun	49.912	47.69	- 4.5	- 1.7
Jul	49.941	47.721	- 4.4	- 2.1
Aug	50.113	48.049	- 4.1	- 2.4
Sep	48.904	46.447	- 5.0	- 2.7
Oct	48.658	46.443	- 4.6	- 2.9
Nov	47.206			
Dec	41.329			
Average	46.763			

**Contact the Traffic and Field Operations Unit with questions or requests at:
(785)-296-3841 or E-mail: TrafficCounts@ksdot.org
The Monthly Average Daily Traffic (MADT) is Calculated Utilizing the
Day-Of-Week (DOW) Method. Missing Traffic Count Data will Not be Estimated
Therefore Station Summary Data will be Blank where Data is Not Available.**

Total Travel on Kansas State Highway System



Date: 20-NOV-2008

Month of October, 2008

Sparse Matrix Model

Route Description	Location Description	County	Average Daily Traffic for the Month			Percent Change Month		Maximum Hour				Maximum Day			7 Day Avg	5 Day Avg	7 Day / 5 Day Avg
			2006	2007	2008	2006	2007	Volume	Hour	DOW	Day	Volume	DOW	Day			

Rural State Highways for District 1

US-75	1.2 MILES N. OF US-36 I.C.	BROWN	3,374	3,627	3,471	2.9	- 4.3	382	4-5 PM	FRI	10	4,360	FRI	17	3,471	3,557	.98
US 24	1.5 MILES N.E. OF LAWRENCE	DOUGLAS	7,920	7,821	7,628	- 3.7	- 2.5	847	3-4 PM	SAT	11	8,989	FRI	10	7,628	7,799	.98
US 56	4 MILES E. OF OVERBROOK	DOUGLAS	1,923	1,865	1,960	1.9	5.1	336	8-9 PM	THU	2	3,250	SAT	18	1,960	1,813	1.08
US 75	5.8 MILES N. OF HOLTON	JACKSON	6,248	6,391	6,029	- 3.5	- 5.7	688	5-6 PM	FRI	24	7,435	FRI	17	6,029	6,004	1.00
K 10	0.2 MILES E. OF RS. 346 INTCHG.	JOHNSON	33,714	33,467	32,138	- 4.7	- 4.0	3,542	9-10 AM	SAT	11	37,557	SAT	25	32,138	32,956	.98
K 99	2.9 MILES S. OF EMPORIA	LYON	4,279	4,379	4,004	- 6.4	- 8.6	438	5-6 PM	MON	20	4,820	FRI	31	4,004	4,191	.96
US 36	13 MILES E. OF MARYSVILLE	MARSHALL	2,572	2,709	2,388	- 7.2	- 11.8	276	5-6 PM	FRI	10	3,051	FRI	17	2,388	2,427	.98
K 68	0.15 MILES E. OF JCT K 268	OSAGE	2,889	2,880	2,653	- 8.2	- 7.9	322	4-5 PM	FRI	10	3,232	FRI	17	2,653	2,576	1.03
K 268	0.1 MILES E. OF US 75	OSAGE	3,009	3,024	2,727	- 9.4	- 9.8	318	5-6 PM	FRI	24	3,362	FRI	10	2,727	2,730	1.00
K 18	0.7 MILES N.E. OF OGDEN	RILEY	21,639	22,878	22,171	2.5	- 3.1	2,704	4-5 PM	FRI	31	28,842	FRI	3	22,171	23,424	.95
US 24	4 MILES N. OF MANHATTAN	RILEY	6,943	6,871	6,561	- 5.5	- 4.5	843	3-4 PM	SAT	25	7,716	FRI	3	6,561	6,516	1.01
K 4	1MI. S. OF JCT. US-24	SHAWNEE	8,898	9,363	8,807	- 1.0	- 5.9	1,216	7-8 AM	TUE	28	10,635	FRI	17	8,807	9,389	.94
US 24	1 MILE N.W. OF ROSSVILLE	SHAWNEE	4,777	5,273	5,357	12.1	1.6	693	5-6 PM	WED	29	6,313	FRI	17	5,357	5,562	.96
I 70	4.7 MILES E. OF K 30 INTCHG. (MAPLE HILL)	WABAUNSEE		20,443													

Percent of Change for District 1 Stations

- 2.1 - 4.2

Rural State Highways for District 2

K 9	5.8 MILES E. OF CLIFTON	CLAY	367	332	309	- 15.8	- 6.9	39	2-3 PM	SAT	4	387	TUE	14	309	336	.92
K 15	3.3 MILES N. OF CLAY CENTER	CLAY	1,889	2,021	1,903	0.7	- 5.8	224	5-6 PM	FRI	3	2,408	FRI	3	1,903	1,986	.96
I 70	W. OF K-232 INTCHG. (WILSON)	ELLSWORTH	9,913	10,214	9,289	- 6.3	- 9.1	1,043	4-5 PM	SUN	19	11,031	FRI	10	9,289	9,034	1.03
K 141	2.8 MILES S. OF KANOPOLIS DAM	ELLSWORTH	409	527	448	9.5	- 15.0	70	3-4 PM	SAT	25	576	SAT	18	448	419	1.07
K 18	1.8 MILES W. OF JUNCTION CITY	GEARY	1,286	1,347	1,241	- 3.5	- 7.9	270	8-9 AM	WED	1	1,573	WED	1	1,241	1,321	.94
I 70	4.5 MILES S.W. OF JUNCTION CITY	GEARY	16,841	16,551	16,029	- 4.8	- 3.2	1,830	9-10 AM	SAT	25	21,354	FRI	3	16,029	15,725	1.02
US 77	4 MILES S. OF JUNCTION CITY	GEARY	3,511	3,905	3,682	4.9	- 5.7	627	9-10 AM	SAT	25	4,975	SAT	4	3,682	3,656	1.01
US 36	1 MILE E. OF MANKATO	JEWELL	1,798	1,814	1,868	3.9	3.0	244	6-7 PM	FRI	17	2,472	FRI	17	1,868	2,001	.93
K 18	0.5 MILES W. OF LINCOLN	LINCOLN	984	1,036	981	- 0.3	- 5.3	126	2-3 PM	FRI	31	1,317	FRI	31	981	1,042	.94
I 135	0.5 MILES N. OF US 56 INTCHG. (MCPHERSON)	MCPHERSON	12,306		11,889	- 3.4		1,328	5-6 PM	FRI	10	14,856	FRI	3	11,889	11,665	1.02
K 14	3 MILES S. OF BELOIT	MITCHELL	848	864	719	- 15.2	- 16.8	92	5-6 PM	FRI	3	934	FRI	3	719	769	.93
US 81	2.5 MILES S. OF BELLEVILLE	REPUBLIC	4,903	4,918	4,596	- 6.3	- 6.5	450	2-3 PM	FRI	31	5,615	FRI	31	4,596	4,694	.98

Percent of Change for District 2 Stations

- 3.8 - 5.7

Rural State Highways for District 3

US 83	6.2 MILES S. OF OAKLEY	LOGAN	1,549	1,615	1,598	3.2	- 1.1	167	2-3 PM	FRI	17	1,981	FRI	17	1,598	1,687	.95
US 36	9.5 MILES W. OF NORTON	NORTON	1,044	942	882	- 15.5	- 6.4	113	1-2 PM	FRI	31	1,171	THU	30	882	928	.95
US 183	1.2 MILES S. OF PHILLIPSBURG	PHILLIPS	2,444	2,377	2,352	- 3.8	- 1.1	275	5-6 PM	FRI	17	2,955	FRI	17	2,352	2,481	.95
K 23	14.5 MILES S. OF HOXIE	SHERIDAN	827	851	754	- 8.8	- 11.4	99	5-6 PM	FRI	3	1,019	FRI	3	754	803	.94
I 70	2.2 MI. E OF KANORADO EXIT	SHERMAN	7,580	7,746	7,131	- 5.9	- 7.9	691	3-4 PM	SUN	12	8,622	THU	16	7,131	7,136	1.00
US 24	7.3 MILES E. OF COLBY	THOMAS	1,643	1,849	1,724	4.9	- 6.8	227	5-6 PM	FRI	10	2,364	FRI	10	1,724	1,833	.94
K 25	1.8 MILES S. OF COLBY	THOMAS	788	893	789	0.1	- 11.6	91	8-9 AM	FRI	31	1,045	FRI	31	789	872	.90
I 70	1 MILE W. OF WAKEENEY	TREGO	9,098	9,191	8,706	- 4.3	- 5.3	829	3-4 PM	SUN	19	10,018	FRI	3	8,706	8,823	.99
US 40	1.4 MILES E. OF KAN-COLO ST. LINE	WALLACE	441	504	440	- 0.2	- 12.7	55	12-1 PM	THU	9	553	FRI	3	440	476	.92

Percent of Change for District 3 Stations

- 4.1 - 6.1

Date: 20-NOV-2008

Month of October, 2008

Sparse Matrix Model

Route Description	Location Description	County	Average Daily Traffic for the Month			Percent Change Month		Maximum Hour				Maximum Day			7 Day Avg	5 Day Avg	7 Day / 5 Day Avg
			2006	2007	2008	2006	2007	Volume	Hour	DOW	Day	Volume	DOW	Day			
Rural State Highways for District 4																	
US 54	3 MILES W. OF IOLA	ALLEN	3,167	3,232	2,927	- 7.6	- 9.4	325	5-6 PM	FRI	10	3,805	FRI	10	2,927	3,005	.97
US 169	1 MILE N. OF GREELEY	ANDERSON	3,395	3,492	3,408	0.4	- 2.4	369	5-6 PM	FRI	3	4,093	FRI	17	3,408	3,488	.98
US 69	2 MILES N. OF FT SCOTT	BOURBON	5,435	5,667	5,326	- 2.0	- 6.0	628	4-5 PM	FRI	3	6,812	FRI	17	5,326	5,242	1.02
US 166	0.5 MILES W. OF NIOTAZE	CHAUTAUQUA	2,616	2,548	2,455	- 6.2	- 3.6	286	5-6 PM	FRI	3	3,056	FRI	3	2,455	2,449	1.00
I 35	2 MILES W. OF K- 131 INTCHG. N. OF LEBO	COFFEY	13,467	13,860	13,016	- 3.3	- 6.1	1,860	4-5 PM	SUN	19	17,176	SUN	19	13,016	12,582	1.03
US 59	4.3 MILES S. OF OTTAWA	FRANKLIN	6,208	6,071	5,887	- 5.2	- 3.0	658	5-6 PM	FRI	10	7,279	FRI	17	5,887	5,917	.99
I 35	2 MILES N.E. OF THE WELLSVILLE INTCHG.	FRANKLIN	20,991	22,706	18,184	- 13.4	- 19.9	2,074	4-5 PM	SUN	19	22,359	FRI	17	18,184	18,297	.99
US 400	3 MILES E. OF PARSONS	LABETTE	3,785	3,843	3,447	- 8.9	- 10.3	369	3-4 PM	FRI	17	4,438	FRI	10	3,447	3,441	1.00
US 59	4 MILES S. OF ERIE	NEOSHO	3,259	3,438	3,191	- 2.1	- 7.2	358	5-6 PM	FRI	10	3,978	FRI	10	3,191	3,454	.92
US 169	1 MILE N. OF THAYER	NEOSHO	4,357	4,471	4,322	- 0.8	- 3.3	511	5-6 PM	FRI	3	5,794	FRI	3	4,322	4,519	.96
US 75	1 MILE N. OF YATES CENTER	WOODSON	3,021	2,921	2,703	- 10.5	- 7.5	330	9-10 AM	SAT	25	3,411	FRI	3	2,703	2,650	1.02
K 105	2 MILES N. OF TORONTO	WOODSON	656	692	641	- 2.3	- 7.4	98	12-1 PM	MON	13	790	SUN	5	641	622	1.03

Percent of Change for District 4 Stations

- 6.9 - 10.2

Rural State Highways for District 5

US 56	5.5 MILES E. OF GREAT BEND	BARTON	5,007	5,227	4,995	- 0.2	- 4.4	604	5-6 PM	FRI	24	6,133	FRI	31	4,995	5,290	.94
US 77	2 MILES N. OF EL DORADO	BUTLER	2,522	2,738	2,639	4.6	- 3.6	323	1-2 PM	SUN	19	3,339	SAT	25	2,639	2,486	1.06
US 400	1.5 MILES E. OF LEON	BUTLER	4,956	4,968	4,386	- 11.5	- 11.7	552	5-6 PM	FRI	3	5,952	FRI	3	4,386	4,281	1.02
US 77	3.7 MILES N. OF ARKANSAS CITY	COWLEY		11,170	11,016		- 1.4	1,157	3-4 PM	FRI	31	13,254	FRI	10	11,016	11,794	.93
US 160	6.2 MILES E. OF ATTICA	HARPER	1,484	1,455	1,423	- 4.1	- 2.2	162	5-6 PM	THU	30	1,724	FRI	3	1,423	1,500	.95
US 50	3 MILES N.E. OF NEWTON	HARVEY	6,379	6,556	6,303	- 1.2	- 3.9	690	5-6 PM	FRI	24	7,534	FRI	3	6,303	6,287	1.00
US 54	5.8 MILES W. OF KINGMAN	KINGMAN	4,688	4,851	4,720	0.7	- 2.7	502	2-3 PM	FRI	31	5,648	FRI	31	4,720	4,702	1.00
US 54	1.5 MILES W. OF HAVILAND	KIOWA			5,101		*	513	5-6 PM	FRI	3	6,011	FRI	3	5,101	5,241	.97
US 183	7 MILES S. OF GREENSBURG	KIOWA	929	1,042	965	3.9	- 7.4	115	3-4 PM	WED	8	1,194	FRI	17	965	1,054	.92
US 56	5 MILES S.W. OF LARNED	PAWNEE	2,032	2,011	2,054	1.1	2.1	237	5-6 PM	FRI	3	2,641	FRI	3	2,054	2,126	.97
K 61	5 MILES S.W. OF ARLINGTON	RENO	2,238	2,301	2,124	- 5.1	- 7.7	207	4-5 PM	SUN	26	2,426	FRI	24	2,124	2,136	.99
K 14	1 MILE N. OF LYONS	RICE	1,387	1,546	1,407	1.4	- 9.0	164	5-6 PM	FRI	10	1,750	FRI	10	1,407	1,473	.96
K 42	3 MILES N.E. OF VIOLA	SEDGWICK	4,516	4,509	4,252	- 5.8	- 5.7	495	5-6 PM	FRI	24	5,041	FRI	10	4,252	4,518	.94
US 281	0.5 MILES S. OF ST. JOHN	STAFFORD	2,363	2,540	2,449	3.6	- 3.6	265	5-6 PM	FRI	3	3,063	FRI	17	2,449	2,604	.94
US 81	4.1 MILES S. OF WELLINGTON	SUMNER	1,830	1,845	1,801	- 1.6	- 2.4	188	4-5 PM	FRI	31	2,092	THU	9	1,801	1,882	.96

Percent of Change for District 5 Stations

- 2.0 - 4.2

Rural State Highways for District 6

US 83	8.2 MILES S. OF GARDEN CITY	FINNEY	3,837	3,997	3,881	1.1	- 2.9	395	5-6 PM	FRI	24	4,459	TUE	7	3,881	4,095	.95
US 50	3.3 MILES W. OF DODGE CITY	FORD	5,318	5,549	5,694	7.1	2.6	559	5-6 PM	FRI	31	6,980	FRI	31	5,694	6,036	.94
K 25	2.5 MILES N. OF ULYSSES	GRANT	1,602	1,668	1,460	- 8.9	- 12.5	149	3-4 PM	THU	9	1,819	THU	9	1,460	1,585	.92
K 27	15 MILES N OF TRIBUNE	GREELEY	617	642	537	- 13.0	- 16.4	79	5-6 PM	FRI	24	720	THU	30	537	591	.91
US 50	0.8 MILES E. OF KAN-COLO ST. LINE	HAMILTON	1,573	1,579	1,460	- 7.2	- 7.5	168	5-6 PM	FRI	10	1,810	FRI	10	1,460	1,488	.98
US 283	8.3 MILES N. OF JETMORE	HODGEMAN	743	892	764	2.8	- 14.3	93	4-5 PM	FRI	3	936	FRI	3	764	840	.91
US 54	3.7 MILES W. OF MEADE	MEADE	3,452	3,515	3,537	2.5	0.6	346	3-4 PM	WED	15	3,950	FRI	31	3,537	3,615	.98
K 96	12 MILES W. OF SCOTT CITY	WICHITA	1,139	1,152	1,164	2.2	1.0	133	5-6 PM	FRI	24	1,466	FRI	24	1,164	1,268	.92

Percent of Change for District 6 Stations

1.2 - 2.6

Date: 20-NOV-2008

Month of October, 2008

Sparse Matrix Model

Route Description	Location Description	County	Average Daily Traffic for the Month			Percent Change Month		Maximum Hour				Maximum Day			7 Day Avg	5 Day Avg	7 Day / 5 Day Avg
			2006	2007	2008	2006	2007	Volume	Hour	DOW	Day	Volume	DOW	Day			

Rural Secondary Stations

RS 61	6.5 MILES S.W. OF HIAWATHA	BROWN	217	253	267	23.0	5.5	38	3-4 PM	FRI	24	342	FRI	3	267	288	.93
RS 463	0.7 MILES S.W. OF BELOIT	MITCHELL	290	259	256	- 11.7	- 1.2	45	5-6 PM	THU	2	424	FRI	31	256	280	.91
RS 272	2 MILES S. OF QUINTER	GOVE	413	433	400	- 3.1	- 7.6	93	5-6 PM	THU	2	783	THU	2	400	422	.95
RS 13	0.5 MILES N. OF BUSH CITY	ANDERSON	354	357	344	- 2.8	- 3.6	49	8-9 AM	SAT	11	495	SAT	11	344	349	.99
RS 18	3 MILES E. OF PARSONS	LABETTE	2,069	2,078	1,756	- 15.1	- 15.5	210	5-6 PM	THU	30	2,101	FRI	10	1,756	1,867	.94
RS 303	0.8 MI. S. OF US-54 & K17 JCT. (MIDWAY)	KINGMAN	350	331	332	- 5.1	0.3	50	4-5 PM	THU	30	419	SAT	25	332	332	1.00
RS 251	6 MILES W. OF FORD	FORD	434	438	401	- 7.6	- 8.4	58	4-5 PM	FRI	17	570	FRI	24	401	399	1.01

Percent of Change for Rural Secondary Stations

- 9.0 - 9.5

Reservoir Stations

K 237	1.5 MILES N. OF JCT. US 24	JEFFERSON	1,154	1,217	1,104	- 4.3	- 9.3	146	3-4 PM	SAT	11	1,591	SAT	4	1,104	1,022	1.08
LOCAL ROAD	KANOPOLIS RESERVOIR N. OF DAM	ELLSWORTH	143	150	198	38.5	32.0					340	SAT	25	198	185	1.07
LOCAL ROAD	KANOPOLIS RESERVOIR S. OF DAM	ELLSWORTH	185	180	208	12.4	15.6					483	FRI	24	208	202	1.03
LOCAL ROAD	CEDAR BLUFF RESERVOIR N. OF DAM	TREGO	34	38	32	- 5.9	- 15.8					74	SUN	26	32	22	1.45

Percent of Change for Reservoir Stations

1.7 - 2.7

Kansas City Stations

I 35	0.5 MILES S.W. OF 87TH ST INTCHG.	JOHNSON															
US 69	0.8 MILES N. OF 167TH ST	JOHNSON	27,733	26,313													
135TH	135TH E. OF MUR-LEN	JOHNSON	36,655	35,259	33,070	- 9.8	- 6.2	3,221	5-6 PM	WED	1	38,533	FRI	10	33,070	34,313	.96
BLACKBOB	BLACKBOB RD. S. OF 139TH	JOHNSON	22,775	22,539	22,402	- 1.6	- 0.6	2,372	5-6 PM	FRI	31	25,166	FRI	31	22,402	22,539	.99
I 435	0.8 MILES S. OF I - 70	WYANDOTTE	63,825	63,693	60,098	- 5.8	- 5.6	6,776	5-6 PM	FRI	3	71,461	FRI	10	60,098	62,993	.95

Percent of Change for Kansas City Stations

- 6.2 - 4.9

Salina Stations

OHIO ST.	OHIO ST. N. OF WESTCHESTER DR.	SALINE	17,065	17,987	17,520	2.7	- 2.6	1,811	5-6 PM	THU	2	21,024	FRI	17	17,520	19,070	.92
----------	--------------------------------	--------	--------	--------	--------	-----	-------	-------	--------	-----	---	--------	-----	----	--------	--------	-----

Percent of Change for Salina Stations

2.7 - 2.6

Topeka Stations

WANAMAKER	WANAMAKER RD. N. OF 33RD ST.	SHAWNEE	9,266	9,803	10,292	11.1	5.0	1,147	5-6 PM	FRI	31	12,384	FRI	31	10,292	10,785	.95
45TH ST.	45TH ST. E. OF INDIANA	SHAWNEE		7,211	6,783		- 5.9	764	5-6 PM	THU	2	8,068	FRI	10	6,783	6,869	.99
W. 10TH ST.	10TH STREET WEST OF WASHBURN	SHAWNEE	12,273	12,289	12,584	2.5	2.4	1,387	3-4 PM	FRI	17	15,903	FRI	31	12,584	14,291	.88
TYLER ST.	TYLER ST. N. OF LAURENT ST.	SHAWNEE	773	631	585	- 24.3	- 7.3	104	12-1 PM	WED	8	906	FRI	10	585	714	.82
N. TOPEKA	TOPEKA BLVD. NORTH OF PARAMORE ST.	SHAWNEE	11,574	12,229	20,169	74.3	64.9	2,333	4-5 PM	FRI	3	24,828	FRI	3	20,169	22,013	.92
I 70	I 70 E. OF MACVICAR ST.	SHAWNEE	46,152	44,400	44,437	- 3.7	0.1	4,875	4-5 PM	FRI	3	54,290	FRI	3	44,437	47,338	.94
I 470	I 470 N.W. OF HUNTOON	SHAWNEE	36,577	36,374	34,536	- 5.6	- 5.1	3,807	5-6 PM	FRI	24	41,227	FRI	31	34,536	36,475	.95
US 40	US 40 E. OF TECUMSEH RD.	SHAWNEE	4,816	4,933	4,978	3.4	0.9	673	5-6 PM	WED	1	6,241	FRI	17	4,978	5,438	.92
US 75	US 75 N. OF S.W. 57TH	SHAWNEE	14,894	14,651	14,685	- 1.4	0.2	1,629	4-5 PM	FRI	10	17,628	FRI	10	14,685	15,617	.94

Percent of Change for Topeka Stations

4.4 4.6

Date: 20-NOV-2008

Month of October, 2008

Sparse Matrix Model

Route Description	Location Description	County	Average Daily Traffic			Percent Change		Maximum Hour			Maximum Day			7 Day Avg	5 Day Avg	7 Day / 5 Day Avg	
			for the Month			Month		Volume	Hour	DOW	Day	Volume	DOW				Day
			2006	2007	2008	2006	2007										
Wichita Stations																	
K 96	K-96 E. OF GREENWICH RD.	SEDGWICK	23,384	24,811	23,361	- 0.1	- 5.8	2,750	5-6 PM	FRI	24	27,591	FRI	31	23,361	25,493	.92
US 54	KELLOGG E. OF WEST ST.	SEDGWICK	90,743	92,802	90,450	- 0.3	- 2.5	9,223	4-5 PM	FRI	31	108,664	FRI	31	90,450	98,902	.91
13TH ST.	13TH ST W. OF PINECREST	SEDGWICK	18,189	16,986	16,441	- 9.6	- 3.2	1,771	5-6 PM	WED	1	19,560	FRI	3	16,441	17,687	.93
ROCK RD.	ROCK RD. S. OF CENTRAL AVE	SEDGWICK	35,205	30,738													
21ST ST.	21ST ST E. OF WASHINGTON	SEDGWICK	15,424	15,614	14,053	- 8.9	- 10.0	1,488	4-5 PM	FRI	24	17,149	FRI	31	14,053	15,024	.94
HILLSIDE ST.	HILLSIDE S. OF 15TH ST	SEDGWICK	12,944		12,224	- 5.6		1,209	5-6 PM	THU	30	14,682	FRI	3	12,224	13,563	.90
I 235	I 235 S. OF MAPLE ST	SEDGWICK	50,702	50,280	49,947	- 1.5	- 0.7	5,216	5-6 PM	FRI	24	59,790	FRI	31	49,947	53,845	.93
I 135	I-135 N. OF 21ST ST.	SEDGWICK		67,001													
						- 2.3 - 3.1											
Percent of Change for Wichita Stations																	

NOTE: * Excluded from Percent Change Totals