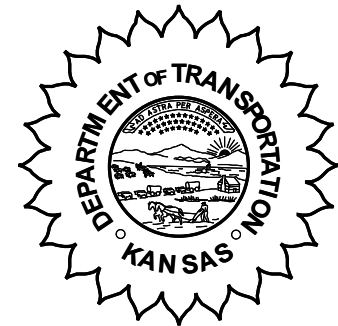


**KANSAS DEPARTMENT OF TRANSPORTATION  
BUREAU OF TRANSPORTATION PLANNING**

**OCTOBER 2006**



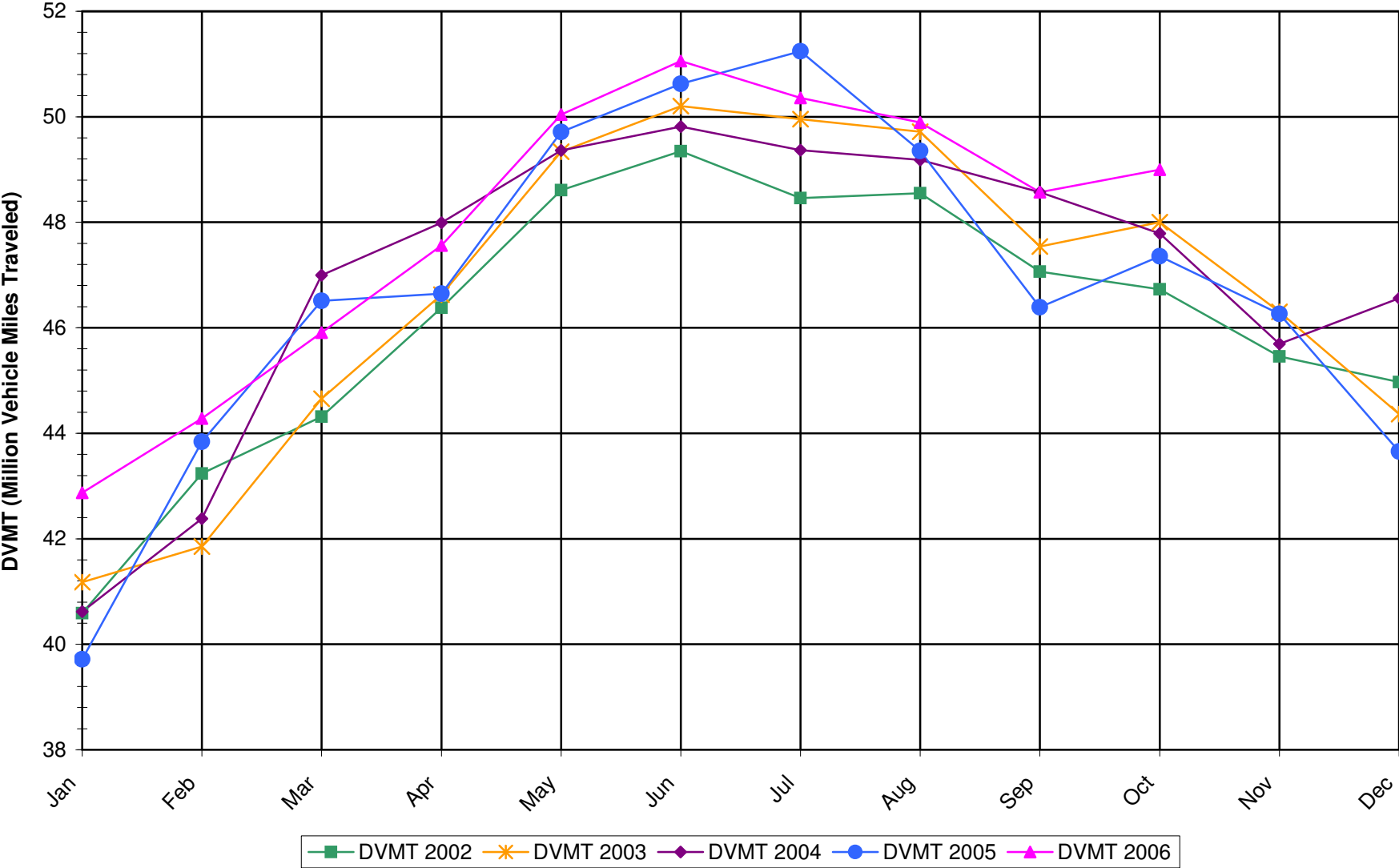
**SIGNIFICANT FACTS AND TRENDS**

Travel on the Kansas State Highway System				
	Daily Vehicle Miles (In Millions)		% Change 2005 to 2006	
Month	2005	2006	Month	Year
Jan	39.717	42.870	7.9	7.9
Feb	43.839	44.280	1.0	4.3
Mar	46.513	45.910	-1.3	2.3
Apr	46.645	47.560	2.0	2.2
May	49.712	50.040	0.7	1.9
Jun	50.625	51.060	0.9	1.7
Jul	51.240	50.360	-1.7	1.2
Aug	49.351	49.890	1.1	1.1
Sep	46.388	48.570	4.7	1.5
Oct	47.356	49.000	3.5	1.7
Nov	46.264			
Dec	43.653			
Average	46.775			

**Contact the Traffic and Field Operations Unit with questions or requests at:  
(785)-296-3841 or E-mail: [TrafficCounts@ksdot.org](mailto:TrafficCounts@ksdot.org)**

**The Monthly Average Daily Traffic (MADT) is Calculated Utilizing the Day-Of-Week (DOW) Method. Missing Traffic Count Data will Not be Estimated Therefore Station Summary Data will be Blank where Data is Not Available.**

Total Travel on Kansas State Highway System 2002-2006



Date: 27-NOV-2006

Month of October, 2006

Sparse Matrix Model

Route Description	Location Description	County	Average Daily Traffic for the Month			Percent Change Month		Maximum Hour				Maximum Day			7 Day Avg	5 Day Avg	7 Day / 5 Day Avg	
			2004	2005	2006	2004	2005	Volume	Hour	DOW	Day	Volume	DOW	Day				
<b>Rural State Highways for District 1</b>																		
US-75	US-75 1.2 MILES N. OF US-36 I.C.	BROWN			3,374			*	344	5-6 PM	FRI	27	4,215	FRI	27	3,374	3,450	.98
US 24	1.5 MILES N.E. OF LAWRENCE	DOUGLAS	7,995	8,024	7,920	- 0.9	- 1.3		896	5-6 PM	FRI	13	10,080	SAT	7	7,920	8,031	.99
US 56	4 MILES E. OF OVERBROOK	DOUGLAS	1,991	1,947	1,923	- 3.4	- 1.2		225	11-12 AM	SUN	22	2,434	SUN	22	1,923	1,835	1.05
US 75	5.8 MILES N. OF HOLTON	JACKSON	6,626	6,351	6,248	- 5.7	- 1.6		678	5-6 PM	FRI	13	7,715	FRI	13	6,248	6,177	1.01
K 10	0.2 MILES E. OF RS. 346 INTCHG.	JOHNSON	34,260	33,477	33,714	- 1.6	0.7		3,716	5-6 PM	FRI	13	39,052	FRI	13	33,714	35,070	.96
K 99	2.9 MILES S. OF EMPORIA	LYON	4,589	4,215	4,279	- 6.8	1.5		481	5-6 PM	FRI	6	5,329	FRI	6	4,279	4,498	.95
US 36	13 MILES E. OF MARYSVILLE	MARSHALL	2,423		2,572	6.1			315	5-6 PM	FRI	20	3,440	FRI	20	2,572	2,583	1.00
K 68	0.15 MILES E. OF JCT K 268	OSAGE	3,026	2,880	2,889	- 4.5	0.3		310	3-4 PM	FRI	13	3,707	SAT	7	2,889	2,826	1.02
K 268	0.1 MILES E. OF US 75	OSAGE	3,172	2,953	3,009	- 5.1	1.9		339	5-6 PM	FRI	6	3,506	FRI	20	3,009	3,012	1.00
K 18	0.7 MILES N.E. OF OGDEN	RILEY	20,008	18,773	21,639	8.2	15.3		2,400	5-6 PM	MON	2	26,959	FRI	13	21,639	22,875	.95
US 24	4 MILES N. OF MANHATTAN	RILEY	6,870	6,709	6,943	1.1	3.5		919	9-10 PM	SAT	14	9,166	SAT	14	6,943	6,819	1.02
K 4	1MI. S. OF JCT. US-24	SHAWNEE	8,478	8,349	8,898	5.0	6.6		1,153	7-8 AM	THU	5	10,375	FRI	20	8,898	9,597	.93
US 24	1 MILE N.W. OF ROSSVILLE	SHAWNEE	4,997	4,881	4,777	- 4.4	- 2.1		604	5-6 PM	FRI	6	5,927	FRI	6	4,777	4,945	.97
I 70	4.7 MILES E. OF K 30 INTCHG. (MAPLE HILL)	WABAUNSEE	21,167	20,061														

Percent of Change for District 1 Stations

.4 3.7

Rural State Highways for District 2

K 9	5.8 MILES E. OF CLIFTON	CLAY	331	324	367	10.9	13.3		73	4-5 PM	MON	16	517	WED	25	367	402	.91
K 15	3.3 MILES N. OF CLAY CENTER	CLAY	1,870	1,788	1,889	1.0	5.6		214	5-6 PM	FRI	13	2,267	FRI	6	1,889	1,971	.96
I 70	W. OF K-232 INTCHG. (WILSON)	ELLSWORTH	10,134	9,611	9,913	- 2.2	3.1		1,028	3-4 PM	SUN	15	12,040	SUN	1	9,913	9,663	1.03
K 141	2.8 MILES S. OF KANOPOLIS DAM	ELLSWORTH	465	434	409	- 12.0	- 5.8		72	11-12 AM	SAT	7	606	SAT	14	409	377	1.08
K 18	1.8 MILES W. OF JUNCTION CITY	GEARY	1,330	1,310	1,286	- 3.3	- 1.8		155	5-6 PM	FRI	13	1,537	FRI	6	1,286	1,336	.96
I 70	4.5 MILES S.W. OF JUNCTION CITY	GEARY	16,802	16,137	16,841	0.2	4.4		1,798	4-5 PM	FRI	20	20,838	SAT	14	16,841	16,249	1.04
US 77	4 MILES S. OF JUNCTION CITY	GEARY	3,417	2,858	3,511	2.8	22.8		466	11-12 AM	SAT	7	4,539	SAT	7	3,511	3,477	1.01
US 36	1 MILE E. OF MANKATO	JEWELL	1,950	1,786	1,798	- 7.8	0.7		238	5-6 PM	FRI	13	2,395	FRI	13	1,798	1,903	.94
K 18	0.5 MILES W. OF LINCOLN	LINCOLN	1,024	995	984	- 3.9	- 1.1		134	4-5 PM	THU	12	1,225	FRI	13	984	1,044	.94
I 135	0.5 MILES N. OF US 56 INTCHG. (MCPHERSON)	MCPHERSON	12,043	11,665	12,306	2.2	5.5		1,350	5-6 PM	FRI	6	15,489	FRI	6	12,306	11,994	1.03
K 14	3 MILES S. OF BELOIT	MITCHELL	900	847	848	- 5.8	0.1		107	7-8 AM	WED	4	1,056	FRI	6	848	911	.93
US 81	2.5 MILES S. OF BELLEVILLE	REPUBLIC	4,768	4,692	4,903	2.8	4.5		528	2-3 PM	FRI	27	6,215	FRI	27	4,903	4,956	.99

Percent of Change for District 2 Stations

.0 5.0

Rural State Highways for District 3

US 83	6.2 MILES S. OF OAKLEY	LOGAN	1,445	1,403	1,549	7.2	10.4		145	4-5 PM	WED	25	1,767	FRI	13	1,549	1,629	.95
US 36	9.5 MILES W. OF NORTON	NORTON	885	930	1,044	18.0	12.3		144	10-11 AM	FRI	13	1,504	FRI	13	1,044	1,124	.93
US 183	1.2 MILES S. OF PHILLIPSBURG	PHILLIPS		2,412	2,444		1.3		271	9-10 AM	SAT	7	3,213	FRI	6	2,444	2,565	.95
K 23	14.5 MILES S. OF HOXIE	SHERIDAN	818	755	827	1.1	9.5		116	5-6 PM	TUE	31	1,109	FRI	20	827	880	.94
I 70	2.2 MI. E OF KANORADO EXIT	SHERMAN	7,999	7,435	7,580	- 5.2	2.0		764	3-4 PM	SUN	1	9,113	THU	19	7,580	7,583	1.00
US 24	7.3 MILES E. OF COLBY	THOMAS	1,673	1,620	1,643	- 1.8	1.4		181	6-7 PM	FRI	6	2,095	FRI	6	1,643	1,747	.94
K 25	1.8 MILES S. OF COLBY	THOMAS	835	812	788	- 5.6	- 3.0		99	5-6 PM	FRI	13	1,004	WED	25	788	863	.91
I 70	1 MILE W. OF WAKEENEY	TREGO	9,005	8,670	9,098	1.0	4.9		843	3-4 PM	SUN	8	10,388	THU	19	9,098	9,124	1.00
US 40	1.4 MILES E. OF KAN-COLO ST. LINE	WALLACE	497	450	441	- 11.3	- 2.0		55	10-11 AM	MON	2	559	FRI	6	441	474	.93

Percent of Change for District 3 Stations

- .8 3.8

Date: 27-NOV-2006

Month of October, 2006

Sparse Matrix Model

Route Description	Location Description	County	Average Daily Traffic for the Month			Percent Change Month		Maximum Hour				Maximum Day			7 Day Avg	5 Day Avg	7 Day / 5 Day Avg	
			2004	2005	2006	2004	2005	Volume	Hour	DOW	Day	Volume	DOW	Day				
			<b>Rural State Highways for District 4</b>															
US 54	3 MILES W. OF IOLA	ALLEN	3,191	3,000	3,167	- 0.8	5.6	311	5-6 PM	FRI	6	3,728	FRI	6	3,167	3,247	.98	
US 169	1 MILE N. OF GREELEY	ANDERSON	3,539	3,553	3,395	- 4.1	- 4.4	356	5-6 PM	FRI	27	4,061	FRI	20	3,395	3,476	.98	
US 69	2 MILES N. OF FT SCOTT	BOURBON	5,328	5,400	5,435	2.0	0.6	628	5-6 PM	FRI	20	7,267	FRI	20	5,435	5,469	.99	
US 166	0.5 MILES W. OF NIOTAZE	CHAUTAUQUA	2,595	2,468	2,616	0.8	6.0	305	4-5 PM	FRI	13	3,238	FRI	13	2,616	2,636	.99	
I 35	2 MILES W. OF K- 131 INTCHG. N. OF LEBO	COFFEY	14,146	13,541	13,467	- 4.8	- 0.5	1,771	5-6 PM	SUN	22	17,370	SUN	22	13,467	13,001	1.04	
US 59	4.3 MILES S. OF OTTAWA	FRANKLIN	6,359	6,082	6,208	- 2.4	2.1	656	5-6 PM	FRI	6	7,564	FRI	20	6,208	6,212	1.00	
I 35	2 MILES N.E. OF THE WELLSVILLE INTCHG.	FRANKLIN	19,498	19,529	20,991	7.7	7.5	2,173	4-5 PM	FRI	13	25,089	FRI	20	20,991	21,314	.98	
US 400	3 MILES E. OF PARSONS	LABETTE	3,181	3,307	3,785	19.0	14.5	*	404	3-4 PM	FRI	13	4,885	FRI	20	3,785	3,796	1.00
US 59	4 MILES S. OF ERIE	NEOSHO	3,030	2,924	3,259	7.6	11.5	390	5-6 PM	FRI	6	4,255	FRI	6	3,259	3,499	.93	
US 169	1 MILE N. OF THAYER	NEOSHO	3,943	4,119	4,357	10.5	5.8	490	4-5 PM	FRI	20	5,559	FRI	6	4,357	4,565	.95	
US 75	1 MILE N. OF YATES CENTER	WOODSON	2,950	2,836	3,021	2.4	6.5	336	9-10 AM	SAT	28	3,718	FRI	6	3,021	2,954	1.02	
K 105	2 MILES N. OF TORONTO	WOODSON	668	678	656	- 1.8	- 3.2	82	12-1 PM	SUN	1	792	FRI	6	656	657	1.00	

Percent of Change for District 4 Stations

2.0 3.8

Rural State Highways for District 5

US 56	5.5 MILES E. OF GREAT BEND	BARTON	5,011	4,901	5,007	- 0.1	2.2	635	5-6 PM	FRI	20	6,543	FRI	20	5,007	5,247	.95
US 77	2 MILES N. OF EL DORADO	BUTLER	2,784	2,738	2,522	- 9.4	- 7.9	294	5-6 PM	FRI	20	3,267	SAT	7	2,522	2,405	1.05
US 400	1.5 MILES E. OF LEON	BUTLER	4,905		4,956	1.0		547	5-6 PM	FRI	6	6,593	FRI	6	4,956	4,837	1.02
US 77	3.7 MILES N. OF ARKANSAS CITY	COWLEY	10,617	10,285													
US 160	6.2 MILES E. OF ATTICA	HARPER	1,458	1,450	1,484	1.8	2.3	165	6-7 PM	FRI	13	1,894	FRI	13	1,484	1,554	.95
US 50	3 MILES N.E. OF NEWTON	HARVEY	5,643	5,803	6,379	13.0	9.9	698	5-6 PM	FRI	6	7,432	FRI	6	6,379	6,394	1.00
US 54	5.8 MILES W. OF KINGMAN	KINGMAN	4,611	4,402	4,688	1.7	6.5	491	6-7 PM	FRI	20	5,674	FRI	13	4,688	4,675	1.00
US 183	7 MILES S. OF GREENSBURG	KIOWA	984	890	929	- 5.6	4.4	119	3-4 PM	TUE	10	1,139	TUE	17	929	1,012	.92
US 56	5 MILES S.W. OF LARNED	PAWNEE	2,127	1,986	2,032	- 4.5	2.3	231	5-6 PM	FRI	20	2,363	FRI	20	2,032	2,080	.98
K 61	5 MILES S.W. OF ARLINGTON	RENO	2,210	2,172	2,238	1.3	3.0	219	10-11 AM	SAT	14	2,530	SAT	14	2,238	2,210	1.01
K 14	1 MILE N. OF LYONS	RICE	1,455	1,379	1,387	- 4.7	0.6	153	5-6 PM	FRI	20	1,781	FRI	20	1,387	1,454	.95
K 42	3 MILES N.E. OF VIOLA	SEDGWICK	4,292	4,295	4,516	5.2	5.1	473	5-6 PM	FRI	6	5,218	FRI	27	4,516	4,783	.94
US 281	0.5 MILES S. OF ST. JOHN	STAFFORD	2,455	2,281	2,363	- 3.7	3.6	242	10-11 AM	SAT	21	2,932	FRI	6	2,363	2,485	.95
US 81	4.1 MILES S. OF WELLINGTON	SUMNER	1,996	1,891	1,830	- 8.3	- 3.2	184	4-5 PM	MON	16	2,129	FRI	13	1,830	1,921	.95

Percent of Change for District 5 Stations

1.0 3.5

Rural State Highways for District 6

US 83	8.2 MILES S. OF GARDEN CITY	FINNEY	3,980	3,786	3,837	- 3.6	1.3	394	5-6 PM	TUE	17	4,614	TUE	17	3,837	4,023	.95	
US 50	3.3 MILES W. OF DODGE CITY	FORD	5,592	5,325	5,318	- 4.9	- 0.1	526	6-7 PM	FRI	13	6,693	FRI	13	5,318	5,601	.95	
K 25	2.5 MILES N. OF ULYSSES	GRANT	1,647	1,566	1,602	- 2.7	2.3	199	3-4 PM	THU	12	2,073	THU	12	1,602	1,723	.93	
K 27	15 MILES N OF TRIBUNE	GREELEY	593	628	617	4.0	- 1.8	*	98	5-6 PM	FRI	13	880	FRI	13	617	691	.89
US 50	0.8 MILES E. OF KAN-COLO ST. LINE	HAMILTON	1,590	1,544	1,573	- 1.1	1.9	171	2-3 PM	FRI	27	1,984	FRI	20	1,573	1,615	.97	
US 283	8.3 MILES N. OF JETMORE	HODGEMAN	709	755	743	4.8	- 1.6	82	3-4 PM	THU	26	923	TUE	31	743	825	.90	
US 54	3.7 MILES W. OF MEADE	MEADE	3,412	3,253	3,452	1.2	6.1	298	3-4 PM	SAT	21	3,712	SAT	21	3,452	3,468	1.00	
K 96	12 MILES W. OF SCOTT CITY	WICHITA	1,275	1,200	1,139	- 10.7	- 5.1	119	4-5 PM	FRI	27	1,328	FRI	13	1,139	1,235	.92	

Percent of Change for District 6 Stations

- 3.0 1.3

Date: 27-NOV-2006

Month of October, 2006

Sparse Matrix Model

Route Description	Location Description	County	Average Daily Traffic for the Month			Percent Change Month		Maximum Hour			Maximum Day			7 Day Avg	5 Day Avg	7 Day / 5 Day Avg
			2004	2005	2006	2004	2005	Volume	Hour	DOW	Day	Volume	DOW			

Rural Secondary Stations

RS 61	6.5 MILES S.W. OF HIAWATHA	BROWN	276	258	217	- 21.4	- 15.9	35	11-12 AM	MON	9	263	WED	4	217	234	.93
RS 463	0.7 MILES S.W. OF BELOIT	MITCHELL	273	290	290	6.2	0.0	50	9-10 PM	FRI	20	369	WED	25	290	312	.93
RS 272	2 MILES S. OF QUINTER	GOVE	436	399	413	- 5.3	3.5	73	4-5 PM	THU	5	768	THU	5	413	434	.95
RS 13	0.5 MILES N. OF BUSH CITY	ANDERSON	365	355	354	- 3.0	- 0.3	72	11-12 AM	SAT	14	509	SAT	14	354	364	.97
RS 18	3 MILES E. OF PARSONS	LABETTE	2,506	2,335	2,069	- 17.4	- 11.4	250	5-6 PM	THU	5	2,436	FRI	6	2,069	2,213	.93
RS 303	0.8 MI. S. OF US-54 & K17 JCT. (MIDWAY)	KINGMAN	365	377	350	- 4.1	- 7.2	44	5-6 PM	TUE	17	468	SAT	7	350	353	.99
RS 251	6 MILES W. OF FORD	FORD	464	438	434	- 6.5	- 0.9	64	9-10 AM	SAT	28	581	FRI	6	434	416	1.04

Percent of Change for Rural Secondary Stations

- 5.6 - 2.8

Reservoir Stations

K 237	1.5 MILES N. OF JCT. US 24	JEFFERSON	1,160	1,112	1,154	- 0.5	3.8	147	5-6 PM	FRI	20	1,645	SAT	7	1,154	1,114	1.04
LOCAL ROAD	KANOPOLIS RESERVOIR N. OF DAM	ELLSWORTH	171	167	143	- 16.4	- 14.4					612	SUN	1	143	127	1.13
LOCAL ROAD	KANOPOLIS RESERVOIR S. OF DAM	ELLSWORTH	115	159	185	60.9	16.4					805	SUN	1	185	160	1.16
LOCAL ROAD	CEDAR BLUFF RESERVOIR N. OF DAM	TREGO	46	38	34	- 26.1	- 10.5					103	SUN	1	34	24	1.42

Percent of Change for Reservoir Stations

1.6 2.7

Kansas City Stations

I 35	0.5 MILES S.W. OF 87TH ST INTCHG.	JOHNSON	103,879														
US 69	0.8 MILES N. OF 167TH ST	JOHNSON	26,087		27,733	6.3		3,257	7-8 AM	MON	30	32,237	FRI	20	27,733	29,425	.94
135TH	135TH E. OF MUR-LEN	JOHNSON	38,048	37,363	36,655	- 3.7	- 1.9	3,389	5-6 PM	MON	30	42,620	FRI	13	36,655	38,254	.96
BLACKBOB	BLACKBOB RD. S. OF 139TH	JOHNSON	22,932	21,869	22,775	- 0.7	4.1	2,414	5-6 PM	THU	12	25,818	SAT	14	22,775	23,009	.99
I 435	0.8 MILES S. OF I - 70	WYANDOTTE	50,244	60,642	63,825	27.0	5.2	7,032	5-6 PM	FRI	6	76,027	FRI	6	63,825	67,415	.95

Percent of Change for Kansas City Stations

10.0 2.8

Salina Stations

OHIO ST.	OHIO ST. N. OF WESTCHESTER DR.	SALINE	18,575	18,049	17,065	- 8.1	- 5.5	1,704	12-1 PM	FRI	27	20,625	FRI	27	17,065	18,809	.91
----------	--------------------------------	--------	--------	--------	--------	-------	-------	-------	---------	-----	----	--------	-----	----	--------	--------	-----

Percent of Change for Salina Stations

- 8.1 - 5.5

Topeka Stations

WANAMAKER	WANAMAKER RD. N. OF 33RD ST.	SHAWNEE	10,202	10,165	9,266	- 9.2	- 8.8	1,011	5-6 PM	THU	5	10,811	FRI	13	9,266	9,779	.95
45TH ST.	45TH ST. E. OF INDIANA	SHAWNEE	7,048	7,022													
W. 10TH ST.	10TH STREET WEST OF WASHBURN	SHAWNEE	12,883		12,273	- 4.7		1,342	3-4 PM	MON	16	14,949	TUE	31	12,273	14,033	.87
TYLER ST.	TYLER ST. N. OF LAURENT ST.	SHAWNEE	740	839	773	4.5	- 7.9	127	12-1 PM	TUE	24	1,094	FRI	6	773	974	.79
N. TOPEKA	TOPEKA BLVD. NORTH OF PARAMORE ST.	SHAWNEE	17,987	17,838	11,574	- 35.7	- 35.1	1,440	10-11 AM	SAT	14	14,596	FRI	6	11,574	12,560	.92
I 70	I 70 E. OF MACVICAR ST.	SHAWNEE	46,947	46,865	46,152	- 1.7	- 1.5	4,881	7-8 AM	MON	30	55,435	FRI	13	46,152	49,368	.93
I 470	I 470 N.W. OF HUNTOON	SHAWNEE	37,807	36,204	36,577	- 3.3	1.0	3,990	5-6 PM	FRI	6	43,814	FRI	13	36,577	38,525	.95
US 40	US 40 E. OF TECUMSEH RD.	SHAWNEE	4,354	4,908	4,816	10.6	- 1.9	656	5-6 PM	FRI	20	5,832	FRI	20	4,816	5,243	.92
US 75	US 75 N. OF S.W. 57TH	SHAWNEE	14,261	14,104	14,894	4.4	5.6	1,709	7-8 AM	WED	11	17,957	FRI	13	14,894	15,899	.94

Percent of Change for Topeka Stations

- .9 .3

Date: 27-NOV-2006

Month of October, 2006

Sparse Matrix Model

Route Description	Location Description	County	Average Daily Traffic for the Month			Percent Change Month		Maximum Hour				Maximum Day			7 Day Avg	5 Day Avg	7 Day / 5 Day Avg
			2004	2005	2006	2004	2005	Volume	Hour	DOW	Day	Volume	DOW	Day			
<b>Wichita Stations</b>																	
K 96	K-96 E. OF GREENWICH RD.	SEDGWICK	20,029	21,170	23,384	16.8	10.5	2,681	5-6 PM	THU	5	26,592	FRI	6	23,384	25,628	.91
US 54	KELLOGG E. OF WEST ST.	SEDGWICK	79,026		90,743	14.8		8,850	4-5 PM	TUE	31	106,005	FRI	27	90,743	99,149	.92
13TH ST.	13TH ST W. OF PINECREST	SEDGWICK	18,178	17,366	18,189	0.1	4.7	2,037	5-6 PM	WED	25	21,256	FRI	6	18,189	19,853	.92
ROCK RD.	ROCK RD. S. OF CENTRAL AVE	SEDGWICK	35,292	33,635	35,205	- 0.2	4.7	3,414	5-6 PM	FRI	13	42,130	FRI	13	35,205	36,623	.96
21ST ST.	21ST ST E. OF WASHINGTON	SEDGWICK	15,571	10,889	15,424	- 0.9	41.6	1,605	12-1 PM	MON	16	18,065	FRI	6	15,424	16,512	.93
HILLSIDE ST.	HILLSIDE S. OF 15TH ST	SEDGWICK	14,017	13,332	12,944	- 7.7	- 2.9	1,403	6-7 PM	SUN	1	15,260	SUN	1	12,944	14,214	.91
I 235	I 235 S. OF MAPLE ST	SEDGWICK	50,721	50,204	50,702	0.0	1.0	5,114	4-5 PM	TUE	31	59,521	FRI	13	50,702	54,784	.93
I 135	I-135 N. OF 21ST ST.	SEDGWICK	64,636	65,434													
						5.9		6.3									

Percent of Change for Wichita Stations

NOTE: \* Excluded from Percent Change Totals