

**KANSAS DEPARTMENT OF TRANSPORTATION
BUREAU OF TRANSPORTATION PLANNING**

NOVEMBER 2012

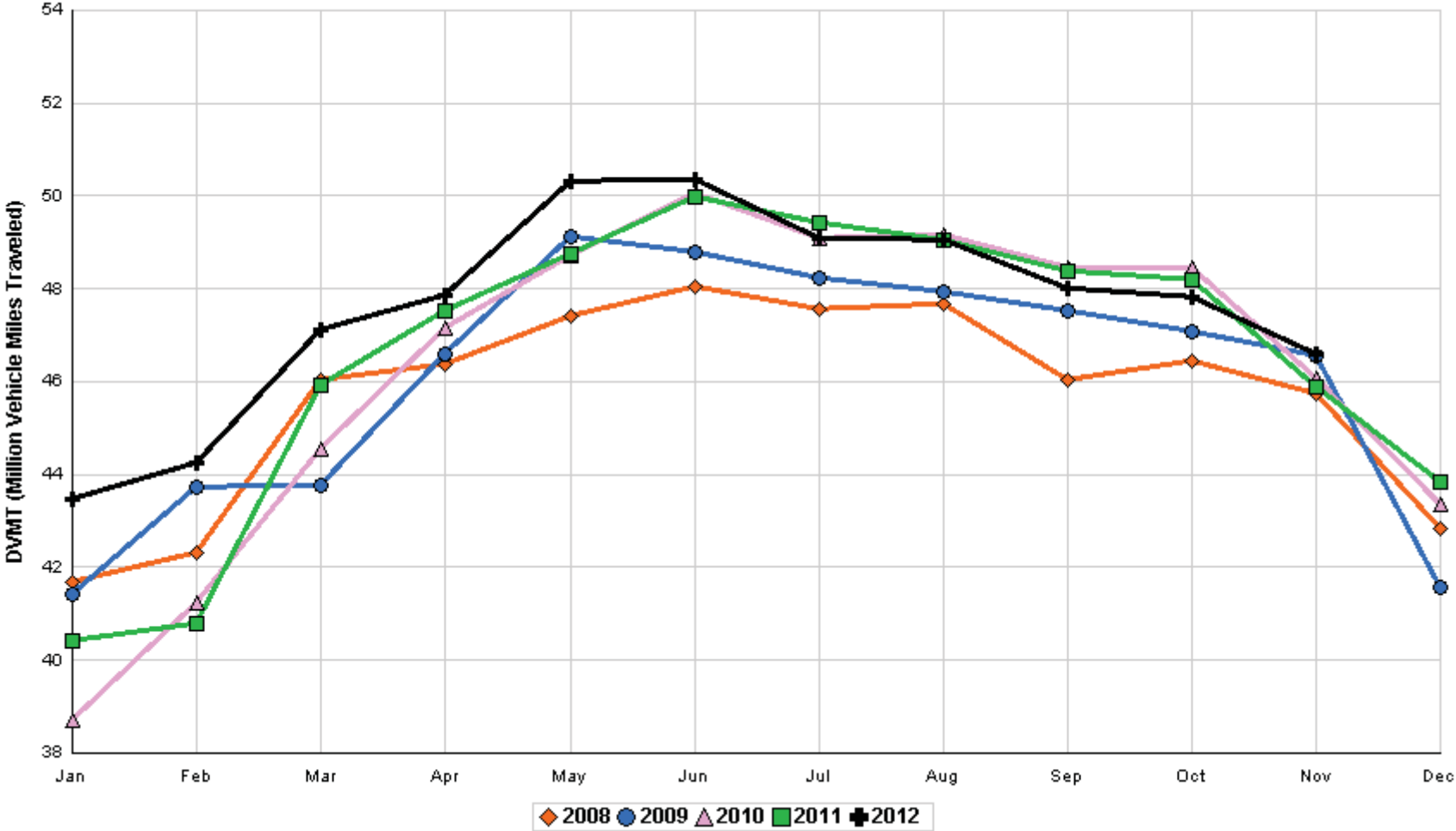
SIGNIFICANT FACTS AND TRENDS



Travel on the Kansas State Highway System				
	Daily Vehicle Miles		% Change	
	(In Millions)		2011 to 2012	
Month	2011	2012	Month	Year
Jan	40.412	43.456	7.5	7.5
Feb	40.793	44.246	8.5	8.0
Mar	45.930	47.106	2.6	6.0
Apr	47.510	47.844	0.7	4.6
May	48.745	50.308	3.2	4.3
Jun	49.964	50.354	0.8	3.6
Jul	49.431	49.087	- 0.7	3.0
Aug	49.047	49.053	0.0	2.6
Sep	48.398	48.008	- 0.8	2.2
Oct	48.198	47.806	- 0.8	1.9
Nov	45.890	46.612	1.6	1.9
Dec	43.834			
Average	46.513			

**Contact the Traffic and Field Operations Unit with questions or requests at:
(785)-296-3841 or E-mail: TrafficCounts@ksdot.org
The Monthly Average Daily Traffic (MADT) is Calculated Utilizing the
Day-Of-Week (DOW) Method. Missing Traffic Count Data will Not be Estimated
Therefore Station Summary Data will be Blank where Data is Not Available.**

Total Travel on Kansas State Highway System 2008 - 2012



Month of November, 2012

Sparse Matrix Model

Date: 03-JAN-2013

Route Description	Location Description	County	Average Daily Traffic for the Month			Percent Change Month		Maximum Hour				Maximum Day			7 Day Avg	5 Day Avg	7 Day / 5 Day Avg
			2010	2011	2012	2010	2011	Volume	Hour	DOW	Day	Volume	DOW	Day			

Rural State Highways for District 1

US-75	1.2 MILES N. OF US-36 I.C.	BROWN	3,868	3,632	3,735	- 3.4	2.8	473	3- 4 pm	SUN	25	5,491	WED	21	3,735	3,855	.97
US 24	1.5 MILES N.E. OF LAWRENCE	DOUGLAS	6,472	6,177	6,117	- 5.5	- 1.0	735	5- 6 pm	FRI	9	7,536	FRI	9	6,117	6,429	.95
US 56	4 MILES E. OF OVERBROOK	DOUGLAS	1,994	1,904	1,874	- 6.0	- 1.6	288	11-12 pm	THU	22	2,321	THU	22	1,874	1,867	1.00
US 75	5.8 MILES N. OF HOLTON	JACKSON	6,180	5,913	5,756	- 6.9	- 2.7	667	4- 5 pm	FRI	9	7,795	WED	21	5,756	5,824	.99
K 10	0.2 MILES E. OF RS. 346 INTCHG.	JOHNSON	33,175	30,703	30,602	- 7.8	- 0.3	3,955	5- 6 pm	FRI	9	39,293	FRI	9	30,602	32,567	.94
K 99	2.9 MILES S. OF EMPORIA	LYON	3,859	3,617	3,681	- 4.6	1.8	427	5- 6 pm	FRI	30	4,543	FRI	9	3,681	3,943	.93
US 36	13 MILES E. OF MARYSVILLE	MARSHALL	2,585	2,483	2,452	- 5.1	- 1.2	311	6- 7 pm	FRI	9	3,495	FRI	9	2,452	2,567	.96
K 68	0.15 MILES E. OF JCT K 268	OSAGE	2,572	2,490	2,433	- 5.4	- 2.3	308	10-11 am	THU	22	2,966	SAT	3	2,433	2,430	1.00
K 268	0.1 MILES E. OF US 75	OSAGE	2,888	2,687	2,651	- 8.2	- 1.3	305	11-12 pm	THU	22	3,225	WED	21	2,651	2,710	.98
K 18	0.7 MILES N.E. OF OGDEN	RILEY	23,469														
US 24	4 MILES N. OF MANHATTAN	RILEY	6,618	6,750	6,560	- 0.9	- 2.8	753	4- 5 pm	FRI	9	7,973	FRI	9	6,560	6,647	.99
K 4	1MI. S. OF JCT. US-24	SHAWNEE		8,131	8,323		2.4	1,079	4- 5 pm	FRI	16	10,269	FRI	16	8,323	9,112	.91
US 24	1 MILE N.W. OF ROSSVILLE	SHAWNEE	4,501	4,198	3,884	- 13.7	- 7.5	431	5- 6 pm	FRI	2	4,716	FRI	16	3,884	4,151	.94
I 70	4.7 MILES E. OF K 30 INTCHG. (MAPLE HILL)	WABAUNSEE	20,186	20,224	20,334	0.7	0.5	3,140	4- 5 pm	SUN	25	31,348	SUN	25	20,334	19,448	1.05

Percent of Change for District 1 Stations

- 5.1 - .5

Rural State Highways for District 2

K 9	5.8 MILES E. OF CLIFTON	CLAY	320	314	337	5.3	7.3	56	4- 5 pm	MON	12	466	MON	12	337	371	.91
K 15	3.3 MILES N. OF CLAY CENTER	CLAY	1,927	1,831	1,842	- 4.4	0.6	201	5- 6 pm	WED	21	2,234	FRI	9	1,842	1,981	.93
I 70	W. OF K-232 INTCHG. (WILSON)	ELLSWORTH	9,863		10,669		8.2	2,168	2- 3 pm	SUN	25	20,764	SUN	25	10,669	9,886	1.08
K 141	2.8 MILES S. OF KANOPOLIS DAM	ELLSWORTH	393		359		- 8.7	52	10-11 am	THU	22	447	FRI	2	359	355	1.01
K 18	1.8 MILES W. OF JUNCTION CITY	GEARY	1,337	1,317	1,250	- 6.5	- 5.1	177	7- 8 am	THU	8	1,545	FRI	9	1,250	1,352	.92
I 70	4.5 MILES S.W. OF JUNCTION CITY	GEARY	16,659	15,981	15,926	- 4.4	- 0.3	2,337	4- 5 pm	SUN	25	24,327	WED	21	15,926	15,470	1.03
US 77	4 MILES S. OF JUNCTION CITY	GEARY	4,069	3,903	3,892	- 4.3	- 0.3	546	2- 3 pm	SAT	3	5,202	WED	21	3,892	3,915	.99
US 36	1 MILE E. OF MANKATO	JEWELL	1,923	1,837	1,863	- 3.1	1.4	254	5- 6 pm	SAT	10	2,557	FRI	9	1,863	1,959	.95
K 18	0.5 MILES W. OF LINCOLN	LINCOLN	1,064	1,108	954	- 10.3	- 13.9	120	4- 5 pm	FRI	2	1,328	FRI	9	954	1,006	.95
I 135	0.5 MILES N. OF US 56 INTCHG. (MCPHERSON)	MCPHERSON		12,768	12,888		0.9	1,983	3- 4 pm	SUN	25	20,010	WED	21	12,888	12,487	1.03
K 14	3 MILES S. OF BELOIT	MITCHELL	844	842	818	- 3.1	- 2.9	140	5- 6 pm	FRI	16	1,205	FRI	16	818	879	.93
US 81	2.5 MILES S. OF BELLEVILLE	REPUBLIC	5,183	5,244	5,048	- 2.6	- 3.7	779	2- 3 pm	SUN	25	8,096	WED	21	5,048	5,043	1.00

Percent of Change for District 2 Stations

- 1.4 - .7

Rural State Highways for District 3

US 83	6.2 MILES S. OF OAKLEY	LOGAN	1,890	2,034	1,828	- 3.3	- 10.1	201	12- 1 pm	WED	21	2,496	WED	21	1,828	1,977	.92
US 36	9.5 MILES W. OF NORTON	NORTON	946	953	942	- 0.4	- 1.2	117	3- 4 pm	WED	21	1,282	WED	21	942	992	.95
US 183	1.2 MILES S. OF PHILLIPSBURG	PHILLIPS	2,361	2,351	2,226	- 5.7	- 5.3	257	5- 6 pm	FRI	9	2,878	WED	21	2,226	2,361	.94
K 23	14.5 MILES S. OF HOXIE	SHERIDAN	786	834	852	8.4	2.2	101	3- 4 pm	WED	21	1,241	WED	21	852	929	.92
I 70	2.2 MI. E OF KANORADO EXIT	SHERMAN	7,490	7,451	7,834	4.6	5.1	1,684	2- 3 pm	SUN	25	16,634	SUN	25	7,834	7,451	1.05
US 24	7.3 MILES E. OF COLBY	THOMAS	1,809	1,793	1,842	1.8	2.7	223	4- 5 pm	FRI	9	2,462	WED	21	1,842	1,950	.94
K 25	1.8 MILES S. OF COLBY	THOMAS	880	810	799	- 9.2	- 1.4	90	7- 8 am	WED	14	997	FRI	9	799	873	.92
I 70	1 MILE W. OF WAKEENEY	TREGO	8,777	8,530	8,869	1.0	4.0	1,996	1- 2 pm	SUN	25	17,916	SUN	25	8,869	8,480	1.05
US 40	1.4 MILES E. OF KAN-COLO ST. LINE	WALLACE	528	533	517	- 2.1	- 3.0	77	6- 7 pm	FRI	9	725	FRI	9	517	548	.94

Percent of Change for District 3 Stations

1.0 1.7

Date: 03-JAN-2013

Month of November, 2012

Sparse Matrix Model

Route Description	Location Description	County	Average Daily Traffic for the Month			Percent Change Month		Maximum Hour			Maximum Day			7 Day Avg	5 Day Avg	7 Day / 5 Day Avg
			2010	2011	2012	2010	2011	Volume	Hour	DOW	Day	Volume	DOW			
US 54	3 MILES W. OF IOLA	ALLEN		2,784	2,721		- 2.3	300	5- 6 pm	FRI	2	3,518 WED	21	2,721	2,847	.96
US 169	1 MILE N. OF GREELEY	ANDERSON	3,414	3,375	3,030	- 11.2	- 10.2	422	10-11 am	THU	22	4,427 WED	21	3,030	3,152	.96
US 69	2 MILES N. OF FT SCOTT	BOURBON	6,020													
US 166	0.5 MILES W. OF NIOTAZE	CHAUTAUQUA	2,526	2,421	2,485	- 1.6	2.6	298	10-11 am	THU	22	3,446 WED	21	2,485	2,551	.97
I 35	2 MILES W. OF K- 131 INTCHG. N. OF LEBO	COFFEY	14,208	12,711	14,072	- 1.0	10.7	2,251	5- 6 pm	SUN	25	23,391 WED	21	14,072	13,511	1.04
US 59	4.3 MILES S. OF OTTAWA	FRANKLIN	6,090	5,839	5,959	- 2.2	2.1	686	4- 5 pm	FRI	9	7,588 WED	21	5,959	6,162	.97
I 35	2 MILES N.E. OF THE WELLSVILLE INTCHG.	FRANKLIN		20,593	20,585		0.0	2,829	4- 5 pm	SUN	25	31,059 WED	21	20,585	20,849	.99
US 400	3 MILES E. OF PARSONS	LABETTE	3,612	3,587	3,584	- 0.8	- 0.1	457	3- 4 pm	SUN	25	5,361 WED	21	3,584	3,648	.98
US 59	4 MILES S. OF ERIE	NEOSHO	2,960	2,891	2,909	- 1.7	0.6	326	7- 8 am	WED	7	3,613 WED	21	2,909	3,213	.91
US 169	1 MILE N. OF THAYER	NEOSHO	4,210	4,138	4,093	- 2.8	- 1.1	513	4- 5 pm	WED	21	6,255 WED	21	4,093	4,335	.94
US 75	1 MILE N. OF YATES CENTER	WOODSON	2,775	2,703	2,670	- 3.8	- 1.2	416	10-11 am	THU	22	4,027 WED	21	2,670	2,691	.99
K 105	2 MILES N. OF TORONTO	WOODSON	590	555	555	- 5.9	0.0	85	12- 1 pm	WED	21	710 FRI	9	555	565	.98

Rural State Highways for District 4

Percent of Change for District 4 Stations

- 2.5 1.7

Rural State Highways for District 5

US 56	5.5 MILES E. OF GREAT BEND	BARTON	5,298	5,089	5,013	- 5.4	- 1.5	609	5- 6 pm	FRI	9	6,210 WED	21	5,013	5,360	.94
US 77	2 MILES N. OF EL DORADO	BUTLER	2,555	2,467	2,485	- 2.7	0.7	296	3- 4 pm	FRI	16	3,283 WED	21	2,485	2,503	.99
US 400	1.5 MILES E. OF LEON	BUTLER	4,162	3,879	4,856	16.7	25.2	656	2- 3 pm	SUN	25	7,256 WED	21	4,856	4,923	.99
US 77	3.7 MILES N. OF ARKANSAS CITY	COWLEY			10,326			1,139	3- 4 pm	FRI	30	13,205 FRI	30	10,326	11,202	.92
US 160	6.2 MILES E. OF ATTICA	HARPER	1,462	1,355	1,535	5.0	13.3	168	3- 4 pm	FRI	30	1,983 FRI	30	1,535	1,664	.92
US 50	3 MILES N.E. OF NEWTON	HARVEY	6,546	6,391	6,204	- 5.2	- 2.9	659	11-12 pm	THU	22	7,506 WED	21	6,204	6,303	.98
US 54	5.8 MILES W. OF KINGMAN	KINGMAN	5,297	5,161	5,036	- 4.9	- 2.4	424	4- 5 pm	FRI	2	5,600 FRI	2	5,036	5,179	.97
US 54	1.5 MILES W. OF HAVILAND	KIOWA	5,287	5,297	5,302	0.3	0.1	603	3- 4 pm	SUN	25	6,918 WED	21	5,302	5,415	.98
US 183	7 MILES S. OF GREENSBURG	KIOWA	912	885	983	7.8	11.1	111	5- 6 pm	TUE	6	1,202 FRI	2	983	1,073	.92
US 56	5 MILES S.W. OF LARNED	PAWNEE	2,259	2,183	2,186	- 3.2	0.1	274	5- 6 pm	WED	21	3,025 WED	21	2,186	2,258	.97
K 61	5 MILES S.W. OF ARLINGTON	RENO	2,129	2,031	2,037	- 4.3	0.3	208	10-11 am	THU	22	2,437 FRI	9	2,037	2,106	.97
K 14	1 MILE N. OF LYONS	RICE	1,425	1,460	1,342	- 5.8	- 8.1	148	11-12 pm	THU	22	1,741 WED	21	1,342	1,437	.93
K 42	3 MILES N.E. OF VIOLA	SEDGWICK	4,482	4,358	4,626	3.2	6.1	513	4- 5 pm	TUE	6	5,550 WED	21	4,626	5,013	.92
US 281	0.5 MILES S. OF ST. JOHN	STAFFORD	2,472	2,459	2,377	- 3.8	- 3.3	262	5- 6 pm	WED	21	3,046 WED	21	2,377	2,584	.92
US 81	4.1 MILES S. OF WELLINGTON	SUMNER	1,750	1,667	1,744	- 0.3	4.6	218	4- 5 pm	FRI	2	2,134 FRI	2	1,744	1,839	.95

Percent of Change for District 5 Stations

- .7 2.3

Rural State Highways for District 6

US 83	8.2 MILES S. OF GARDEN CITY	FINNEY	4,078	4,043	4,101	0.6	1.4	389	4- 5 pm	THU	15	4,743 FRI	2	4,101	4,366	.94
K 25	2.5 MILES N. OF ULYSSES	GRANT	1,528	1,490	1,542	0.9	3.5	162	5- 6 pm	THU	15	1,866 THU	15	1,542	1,698	.91
K 27	15 MILES N OF TRIBUNE	GREELEY	693	798	654	- 5.6	- 18.0	86	3- 4 pm	WED	21	948 WED	21	654	730	.90
US 50	0.8 MILES E. OF KAN-COLO ST. LINE	HAMILTON	1,545	1,483	1,426	- 7.7	- 3.8	178	1- 2 pm	WED	21	2,213 WED	21	1,426	1,475	.97
US 283	8.3 MILES N. OF JETMORE	HODGEMAN		877	964		9.9	111	6- 7 pm	FRI	9	1,319 FRI	9	964	1,059	.91
US 54	3.7 MILES W. OF MEADE	MEADE	3,893		3,782	- 2.9		362	1- 2 pm	WED	21	4,647 WED	21	3,782	3,830	.99
K 96	12 MILES W. OF SCOTT CITY	WICHITA	1,247	1,203	1,218	- 2.3	1.2	144	5- 6 pm	WED	14	1,495 WED	21	1,218	1,342	.91

Percent of Change for District 6 Stations

- 2.0 .1

Date: 03-JAN-2013

Month of November, 2012

Sparse Matrix Model

Route Description	Location Description	County	Average Daily Traffic for the Month			Percent Change Month		Maximum Hour				Maximum Day			7 Day Avg	5 Day Avg	7 Day / 5 Day Avg
			2010	2011	2012	2010	2011	Volume	Hour	DOW	Day	Volume	DOW	Day			

Rural Secondary Stations

RS 61	6.5 MILES S.W. OF HIAWATHA	BROWN	280	209	216	- 22.9	3.3	30	4- 5 pm	FRI	9	274	FRI	30	216	231	.94
RS 463	0.7 MILES S.W. OF BELOIT	MITCHELL	279	235	251	- 10.0	6.8	45	4- 5 pm	FRI	30	332	FRI	16	251	274	.92
RS 272	2 MILES S. OF QUINTER	GOVE	401	398	362	- 9.7	- 9.0	53	4- 5 pm	FRI	9	441	THU	29	362	375	.97
RS 13	0.5 MILES N. OF BUSH CITY	ANDERSON	342	330	308	- 9.9	- 6.7	40	5- 6 pm	FRI	30	374	FRI	2	308	322	.96
RS 18	3 MILES E. OF PARSONS	LABETTE	1,842	1,780	1,778	- 3.5	- 0.1	215	4- 5 pm	FRI	16	2,227	FRI	30	1,778	1,930	.92
RS 303	0.8 MI. S. OF US-54 & K17 JCT. (MIDWAY)	KINGMAN		284	313		10.2	74	4- 5 pm	TUE	6	597	TUE	6	313	326	.96
RS 251	6 MILES W. OF FORD	FORD	434	437	471	8.5	7.8	67	3- 4 pm	FRI	9	635	FRI	9	471	488	.97

Percent of Change for Rural Secondary Stations

- 5.4 .7

Reservoir Stations

K 237	1.5 MILES N. OF JCT. US 24	JEFFERSON	1,193	969	984	- 17.5	1.5	131	5- 6 pm	FRI	30	1,208	FRI	2	984	1,023	.96
LOCAL ROAD	KANOPOLIS RESERVOIR N. OF DAM	ELLSWORTH	120	109	118	- 1.7	8.3					256	SAT	3	118	99	1.19
LOCAL ROAD	KANOPOLIS RESERVOIR S. OF DAM	ELLSWORTH	91	129	120	31.9	- 7.0					224	SAT	3	120	102	1.18
LOCAL ROAD	CEDAR BLUFF RESERVOIR N. OF DAM	TREGO	67	59	43	- 35.8	- 27.1					84	SUN	4	43	35	1.23

Percent of Change for Reservoir Stations

- 14.0 - .1

Kansas City Stations

US 69	0.8 MILES N. OF 167TH ST	JOHNSON	26,864	25,893													
135TH	135TH E. OF MUR-LEN	JOHNSON	34,806	33,804	33,793	- 2.9	0.0	3,330	5- 6 pm	MON	12	39,990	WED	21	33,793	35,476	.95
BLACKBOB	BLACKBOB RD. S. OF 139TH	JOHNSON	20,780	21,446	20,828	0.2	- 2.9	2,209	5- 6 pm	TUE	20	23,963	WED	21	20,828	21,144	.99
I 435	0.8 MILES S. OF I - 70	WYANDOTTE	58,699	58,317	59,003	0.5	1.2	6,931	5- 6 pm	FRI	16	72,269	FRI	16	59,003	62,621	.94

Percent of Change for Kansas City Stations

- .6 .1

Salina Stations

OHIO ST.	OHIO ST. N. OF WESTCHESTER DR.	SALINE	16,603		16,603	0.0		1,793	4- 5 pm	FRI	30	20,895	FRI	30	16,603	18,196	.91
----------	--------------------------------	--------	--------	--	--------	-----	--	-------	---------	-----	----	--------	-----	----	--------	--------	-----

Percent of Change for Salina Stations

.0

Topeka Stations

WANAMAHER	WANAMAHER RD. N. OF 33RD ST.	SHAWNEE	11,323														
45TH ST.	45TH ST. E. OF INDIANA	SHAWNEE	7,145	6,577	7,389	3.4	12.3	915	5- 6 pm	FRI	2	9,013	FRI	2	7,389	7,677	.96
W. 10TH ST.	10TH STREET WEST OF WASHBURN	SHAWNEE	10,149														
N. TOPEKA	TOPEKA BLVD. NORTH OF PARAMORE ST.	SHAWNEE	17,286	17,808	15,542	- 10.1	- 12.7	1,762	12- 1 pm	FRI	30	20,781	FRI	30	15,542	17,081	.91
I 70	I 70 E. OF MACVICAR ST.	SHAWNEE	45,399	42,617	43,541	- 4.1	2.2	4,717	4- 5 pm	FRI	2	55,032	WED	21	43,541	45,899	.95
I 470	I 470 N.W. OF HUNTOON	SHAWNEE	35,046	30,934	31,635	- 9.7	2.3	3,509	5- 6 pm	FRI	2	39,403	WED	21	31,635	33,549	.94
US 40	US 40 E. OF TECUMSEH RD.	SHAWNEE	4,659	4,541	4,556	- 2.2	0.3	610	7- 8 am	WED	7	5,801	FRI	2	4,556	5,021	.91
US 75	US 75 N. OF S.W. 57TH	SHAWNEE	14,256	13,647	15,395	8.0	12.8	1,856	7- 8 am	WED	7	18,665	FRI	16	15,395	16,834	.91

Percent of Change for Topeka Stations

- 4.6 1.7

Month of November, 2012

Sparse Matrix Model

Date: 03-JAN-2013

---- Average Daily Traffic ----			Percent Change		---- Maximum Hour ----				--- Maximum Day ---			7 Day	5 Day	7 Day /	
for the Month			Month		Volume	Hour	DOW	Day	Volume	DOW	Day	Avg	Avg	5 Day	
2010	2011	2012	2010	2011											

Route Description	Location Description	County
-------------------	----------------------	--------

Wichita Stations

K 96	K-96 E. OF GREENWICH RD.	SEDGWICK	22,466		22,667	0.9											
US 54	KELLOGG E. OF WEST ST.	SEDGWICK	84,163	83,364	88,834	5.5	6.6	9,069	4- 5 pm	FRI	16	108,378	FRI	16	88,834	97,616	.91
13TH ST.	13TH ST W. OF PINECREST	SEDGWICK	15,275	14,046	12,573	- 17.7	- 10.5	1,385	5- 6 pm	WED	28	15,445	FRI	2	12,573	13,620	.92
ROCK RD.	ROCK RD. S. OF CENTRAL AVE	SEDGWICK	32,372	31,044	32,279	- 0.3	4.0	3,122	2- 3 pm	FRI	23	45,133	FRI	23	32,279	33,556	.96
21ST ST.	21ST ST E. OF WASHINGTON	SEDGWICK	8,342	11,979	12,742	52.7	6.4	1,340	4- 5 pm	FRI	2	15,556	FRI	2	12,742	13,741	.93
HILLSIDE ST.	HILLSIDE S. OF 15TH ST	SEDGWICK	11,182		10,844	- 3.0		1,129	5- 6 pm	THU	8	13,766	THU	1	10,844	12,092	.90
I 235	I 235 S. OF MAPLE ST	SEDGWICK	47,655	44,473	46,367	- 2.7	4.3	5,019	5- 6 pm	FRI	9	56,248	FRI	9	46,367	50,541	.92
I 135	I-135 N. OF 21ST ST.	SEDGWICK	61,510	65,883	67,058	9.0	1.8	7,352	7- 8 am	THU	15	81,010	FRI	16	67,058	76,382	.88

Percent of Change for Wichita Stations

3.7 3.6

NOTE: * Excluded from Percent Change Totals