

**KANSAS DEPARTMENT OF TRANSPORTATION
BUREAU OF TRANSPORTATION PLANNING**

NOVEMBER 2011

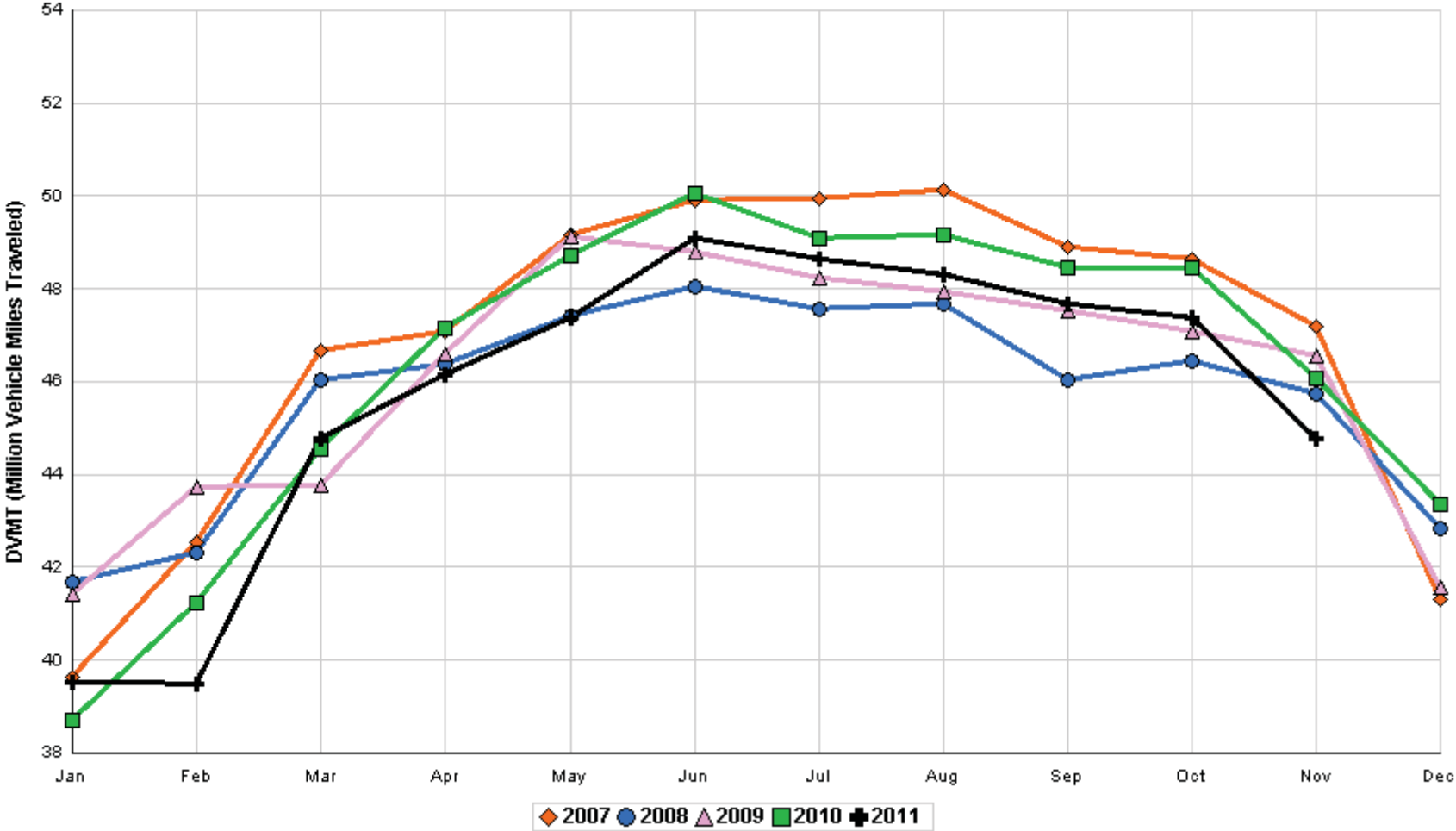
SIGNIFICANT FACTS AND TRENDS



Travel on the Kansas State Highway System				
	Daily Vehicle Miles		% Change	
	(In Millions)		2010 to 2011	
Month	2010	2011	Month	Year
Jan	38.710	39.540	2.1	2.1
Feb	41.232	39.486	- 4.2	- 1.1
Mar	44.532	44.785	0.6	- 0.5
Apr	47.139	46.148	- 2.1	- 1.0
May	48.727	47.370	- 2.8	- 1.4
Jun	50.068	49.100	- 1.9	- 1.5
Jul	49.096	48.638	- 0.9	- 1.4
Aug	49.176	48.317	- 1.7	- 1.4
Sep	48.444	47.688	- 1.6	- 1.5
Oct	48.437	47.367	- 2.2	- 1.5
Nov	46.091	44.763	- 2.9	- 1.7
Dec	43.355			
Average	46.251			

**Contact the Traffic and Field Operations Unit with questions or requests at:
(785)-296-3841 or E-mail: TrafficCounts@ksdot.org
The Monthly Average Daily Traffic (MADT) is Calculated Utilizing the
Day-Of-Week (DOW) Method. Missing Traffic Count Data will Not be Estimated
Therefore Station Summary Data will be Blank where Data is Not Available.**

Total Travel on Kansas State Highway System 2007 - 2011



Month of November, 2011

Sparse Matrix Model

Date: 09-JAN-2012

Route Description	Location Description	County	Average Daily Traffic for the Month			Percent Change Month		Maximum Hour				Maximum Day			7 Day Avg	5 Day Avg	7 Day / 5 Day Avg
			2009	2010	2011	2009	2010	Volume	Hour	DOW	Day	Volume	DOW	Day			
Rural State Highways for District 1																	
US-75	1.2 MILES N. OF US-36 I.C.	BROWN	3,662	3,868	3,632	- 0.8	- 6.1	456	3-4 PM	WED	23	5,415	WED	23	3,632	3,728	.97
US 24	1.5 MILES N.E. OF LAWRENCE	DOUGLAS	7,303	6,472	6,177	- 15.4	- 4.6	918	5-6 PM	WED	16	7,440	WED	16	6,177	6,525	.95
US 56	4 MILES E. OF OVERBROOK	DOUGLAS	1,876	1,994	1,904	1.5	- 4.5	307	11-12 AM	THU	24	2,319	FRI	11	1,904	1,890	1.01
US 75	5.8 MILES N. OF HOLTON	JACKSON	6,293	6,180	5,913	- 6.0	- 4.3	718	4-5 PM	SUN	27	7,922	WED	23	5,913	5,996	.99
K 10	0.2 MILES E. OF RS. 346 INTCHG.	JOHNSON	32,882	33,175	30,703	- 6.6	- 7.5	4,110	5-6 PM	FRI	11	39,291	FRI	11	30,703	32,565	.94
K 99	2.9 MILES S. OF EMPORIA	LYON	3,954	3,859	3,617	- 8.5	- 6.3	416	5-6 PM	TUE	15	4,252	WED	23	3,617	3,853	.94
US 36	13 MILES E. OF MARYSVILLE	MARSHALL	2,478	2,585	2,483	0.2	- 3.9	286	4-5 PM	FRI	18	3,360	WED	23	2,483	2,585	.96
K 68	0.15 MILES E. OF JCT K 268	OSAGE	2,698	2,572	2,490	- 7.7	- 3.2	342	11-12 AM	THU	24	2,970	THU	24	2,490	2,511	.99
K 268	0.1 MILES E. OF US 75	OSAGE	2,804	2,888	2,687	- 4.2	- 7.0	330	11-12 AM	THU	24	3,174	FRI	4	2,687	2,758	.97
K 18	0.7 MILES N.E. OF OGDEN	RILEY	24,258	23,469													
US 24	4 MILES N. OF MANHATTAN	RILEY	6,672	6,618	6,750	1.2	2.0	937	7-8 PM	SAT	12	8,502	FRI	11	6,750	6,807	.99
K 4	1MI. S. OF JCT. US-24	SHAWNEE	8,043		8,131	1.1		1,652	4-5 PM	MON	14	9,946	FRI	4	8,131	8,809	.92
US 24	1 MILE N.W. OF ROSSVILLE	SHAWNEE		4,501	4,198		- 6.7	514	4-5 PM	FRI	18	5,457	FRI	18	4,198	4,502	.93
I 70	4.7 MILES E. OF K 30 INTCHG. (MAPLE HILL)	WABAUNSEE	20,503	20,186	20,224	- 1.4	0.2	3,087	4-5 PM	SUN	27	30,994	SUN	27	20,224	19,358	1.04

Percent of Change for District 1 Stations

- 4.5 - 4.3

Rural State Highways for District 2

K 9	5.8 MILES E. OF CLIFTON	CLAY	329	320	313	- 4.9	- 2.2	53	2-3 PM	MON	21	446	MON	21	313	350	.89
K 15	3.3 MILES N. OF CLAY CENTER	CLAY	1,880	1,927	1,831	- 2.6	- 5.0	224	11-12 AM	THU	24	2,221	WED	23	1,831	1,968	.93
I 70	W. OF K-232 INTCHG. (WILSON)	ELLSWORTH		9,863													
K 141	2.8 MILES S. OF KANOPOLIS DAM	ELLSWORTH	420	393													
K 18	1.8 MILES W. OF JUNCTION CITY	GEARY	1,178	1,337	1,317	11.8	- 1.5	185	4-5 PM	WED	30	1,640	FRI	18	1,317	1,417	.93
I 70	4.5 MILES S.W. OF JUNCTION CITY	GEARY	18,705	16,659	15,981	- 14.6	- 4.1	2,319	3-4 PM	SUN	27	24,435	WED	23	15,981	15,525	1.03
US 77	4 MILES S. OF JUNCTION CITY	GEARY	3,960	4,069	3,903	- 1.4	- 4.1	522	5-6 PM	FRI	18	5,329	WED	23	3,903	3,918	1.00
US 36	1 MILE E. OF MANKATO	JEWELL	1,817	1,923	1,837	1.1	- 4.5	246	3-4 PM	FRI	11	2,413	FRI	11	1,837	1,942	.95
K 18	0.5 MILES W. OF LINCOLN	LINCOLN	1,030	1,064	1,108	7.6	4.1	151	5-6 PM	FRI	11	1,453	FRI	11	1,108	1,156	.96
I 135	0.5 MILES N. OF US 56 INTCHG. (MCPHERSON)	MCPHERSON	11,657		12,768		9.5	1,754	2-3 PM	SUN	27	19,963	WED	23	12,768	12,368	1.03
K 14	3 MILES S. OF BELOIT	MITCHELL	878	844	842	- 4.1	- 0.2	98	4-5 PM	TUE	1	1,146	FRI	4	842	904	.93
US 81	2.5 MILES S. OF BELLEVILLE	REPUBLIC	4,992	5,183	5,244	5.0	1.2	817	3-4 PM	SUN	27	8,335	WED	23	5,244	5,269	1.00

Percent of Change for District 2 Stations

- 2.8 - 2.9

Rural State Highways for District 3

US 83	6.2 MILES S. OF OAKLEY	LOGAN	1,654	1,890	2,034	23.0	7.6	198	2-3 PM	FRI	11	2,485	FRI	11	2,034	2,200	.92
US 36	9.5 MILES W. OF NORTON	NORTON	939	946	953	1.5	0.7	123	3-4 PM	FRI	4	1,219	FRI	11	953	1,002	.95
US 183	1.2 MILES S. OF PHILLIPSBURG	PHILLIPS	2,380	2,361	2,351	- 1.2	- 0.4	263	3-4 PM	FRI	11	2,953	WED	23	2,351	2,479	.95
K 23	14.5 MILES S. OF HOXIE	SHERIDAN	797	786	834	4.6	6.1	110	4-5 PM	FRI	11	1,151	FRI	11	834	895	.93
I 70	2.2 MI. E OF KANORADO EXIT	SHERMAN	9,564	7,490	7,451	- 22.1	- 0.5	1,709	2-3 PM	SUN	27	16,454	SUN	27	7,451	7,016	1.06
US 24	7.3 MILES E. OF COLBY	THOMAS	1,806	1,809	1,793	- 0.7	- 0.9	217	5-6 PM	WED	23	2,471	WED	23	1,793	1,883	.95
K 25	1.8 MILES S. OF COLBY	THOMAS	831	880	810	- 2.5	- 8.0	88	5-6 PM	MON	7	979	FRI	11	810	863	.94
I 70	1 MILE W. OF WAKEENEY	TREGO	8,449	8,777	8,530	1.0	- 2.8	1,962	2-3 PM	SUN	27	17,527	SUN	27	8,530	8,100	1.05
US 40	1.4 MILES E. OF KAN-COLO ST. LINE	WALLACE	495	528	533	7.7	0.9	69	12-1 PM	WED	23	765	WED	23	533	561	.95

Percent of Change for District 3 Stations

- 6.0 - .7

Date: 09-JAN-2012

Month of November, 2011

Sparse Matrix Model

Route Description	Location Description	County	Average Daily Traffic for the Month			Percent Change Month		Maximum Hour				Maximum Day			7 Day Avg	5 Day Avg	7 Day / 5 Day Avg
			2009	2010	2011	2009	2010	Volume	Hour	DOW	Day	Volume	DOW	Day			
Rural State Highways for District 4																	
US 54	3 MILES W. OF IOLA	ALLEN	2,955		2,784	- 5.8		311	2-3 PM	WED	23	3,737	WED	23	2,784	2,891	.96
US 169	1 MILE N. OF GREELEY	ANDERSON	3,395	3,414	3,375	- 0.6	- 1.1	429	10-11 AM	THU	24	4,716	WED	23	3,375	3,511	.96
US 69	2 MILES N. OF FT SCOTT	BOURBON	4,850	6,020													
US 166	0.5 MILES W. OF NIOTAZE	CHAUTAUQUA	2,468	2,526	2,421	- 1.9	- 4.2	309	3-4 PM	WED	23	3,637	WED	23	2,421	2,481	.98
I 35	2 MILES W. OF K- 131 INTCHG. N. OF LEBO	COFFEY		14,208	12,711		- 10.5	1,590	5-6 PM	SUN	13	15,219	FRI	4	12,711	12,490	1.02
US 59	4.3 MILES S. OF OTTAWA	FRANKLIN	5,998	6,090	5,839	- 2.7	- 4.1	684	5-6 PM	FRI	11	7,294	WED	23	5,839	6,031	.97
I 35	2 MILES N.E. OF THE WELLSVILLE INTCHG.	FRANKLIN	18,587		20,593		10.8	2,692	3-4 PM	WED	23	30,557	WED	23	20,593	20,693	1.00
US 400	3 MILES E. OF PARSONS	LABETTE	3,500	3,612	3,587	2.5	- 0.7	465	3-4 PM	SUN	27	5,329	WED	23	3,587	3,604	1.00
US 59	4 MILES S. OF ERIE	NEOSHO	3,076	2,960	2,891	- 6.0	- 2.3	322	5-6 PM	WED	9	3,541	FRI	18	2,891	3,191	.91
US 169	1 MILE N. OF THAYER	NEOSHO	4,254	4,210	4,138	- 2.7	- 1.7	520	4-5 PM	WED	23	6,307	WED	23	4,138	4,334	.95
US 75	1 MILE N. OF YATES CENTER	WOODSON	2,810	2,775	2,703	- 3.8	- 2.6	416	10-11 AM	THU	24	4,218	WED	23	2,703	2,716	1.00
K 105	2 MILES N. OF TORONTO	WOODSON	640	590	555	- 13.3	- 5.9	73	5-6 PM	FRI	4	645	FRI	4	555	570	.97

Percent of Change for District 4 Stations

2.5 - 5.4

Rural State Highways for District 5

US 56	5.5 MILES E. OF GREAT BEND	BARTON	5,025	5,298	5,089	1.3	- 3.9	566	5-6 PM	FRI	11	6,616	WED	23	5,089	5,392	.94
US 77	2 MILES N. OF EL DORADO	BUTLER	2,561	2,555	2,467	- 3.7	- 3.4	308	3-4 PM	WED	23	3,308	WED	23	2,467	2,455	1.00
US 400	1.5 MILES E. OF LEON	BUTLER	4,900	4,162	3,879	- 20.8	- 6.8	398	5-6 PM	FRI	4	4,675	FRI	4	3,879	3,929	.99
US 77	3.7 MILES N. OF ARKANSAS CITY	COWLEY	10,878		7,679		- 29.4	852	3-4 PM	MON	21	9,443	FRI	4	7,679	8,334	.92
US 160	6.2 MILES E. OF ATTICA	HARPER	1,387	1,462	1,355	- 2.3	- 7.3	147	5-6 PM	FRI	4	1,666	WED	23	1,355	1,438	.94
US 50	3 MILES N.E. OF NEWTON	HARVEY	6,432	6,546	6,391	- 0.6	- 2.4	696	5-6 PM	FRI	18	7,922	WED	23	6,391	6,468	.99
US 54	5.8 MILES W. OF KINGMAN	KINGMAN	5,040	5,297	5,161	2.4	- 2.6	634	4-5 PM	SUN	27	6,971	WED	23	5,161	5,130	1.01
US 54	1.5 MILES W. OF HAVILAND	KIOWA	5,149	5,287	5,297	2.9	0.2	643	3-4 PM	SUN	27	6,875	WED	23	5,297	5,330	.99
US 183	7 MILES S. OF GREENSBURG	KIOWA	954	912	885	- 7.2	- 3.0	99	4-5 PM	TUE	15	1,108	FRI	18	885	982	.90
US 56	5 MILES S.W. OF LARNED	PAWNEE	2,119	2,259	2,183	3.0	- 3.4	279	3-4 PM	SUN	27	3,070	WED	23	2,183	2,241	.97
K 61	5 MILES S.W. OF ARLINGTON	RENO	2,149	2,129	2,031	- 5.5	- 4.6	192	5-6 PM	FRI	11	2,350	FRI	11	2,031	2,056	.99
K 14	1 MILE N. OF LYONS	RICE	1,479	1,425	1,460	- 1.3	2.5	174	4-5 PM	FRI	11	1,961	WED	23	1,460	1,578	.93
K 42	3 MILES N.E. OF VIOLA	SEDGWICK	4,211	4,482	4,358	3.5	- 2.8	490	4-5 PM	THU	17	5,177	WED	23	4,358	4,652	.94
US 281	0.5 MILES S. OF ST. JOHN	STAFFORD	2,436	2,472	2,459	0.9	- 0.5	273	5-6 PM	FRI	11	3,154	FRI	11	2,459	2,626	.94
US 81	4.1 MILES S. OF WELLINGTON	SUMNER	1,808	1,750	1,667	- 7.8	- 4.7	173	5-6 PM	WED	30	1,911	FRI	11	1,667	1,759	.95

Percent of Change for District 5 Stations

- 7.4 - 2.9

Rural State Highways for District 6

US 83	8.2 MILES S. OF GARDEN CITY	FINNEY	3,988	4,078	4,043	1.4	- 0.9	403	4-5 PM	WED	30	4,807	WED	23	4,043	4,300	.94
K 25	2.5 MILES N. OF ULYSSES	GRANT	1,575	1,528	1,490	- 5.4	- 2.5	163	5-6 PM	MON	7	1,932	TUE	1	1,490	1,661	.90
K 27	15 MILES N OF TRIBUNE	GREELEY	660	693	798	20.9	15.2	105	11-12 AM	WED	16	1,090	WED	16	798	906	.88
US 50	0.8 MILES E. OF KAN-COLO ST. LINE	HAMILTON	1,386	1,545	1,483	7.0	- 4.0	194	5-6 PM	WED	23	2,259	WED	23	1,483	1,548	.96
US 283	8.3 MILES N. OF JETMORE	HODGEMAN	819		877		7.1	103	4-5 PM	FRI	11	1,078	FRI	11	877	956	.92
US 54	3.7 MILES W. OF MEADE	MEADE	3,705	3,893													
K 96	12 MILES W. OF SCOTT CITY	WICHITA	1,182	1,247	1,203	1.8	- 3.5	146	5-6 PM	FRI	18	1,529	WED	23	1,203	1,304	.92

Percent of Change for District 6 Stations

3.0 - .8

Month of November, 2011

Sparse Matrix Model

Date: 09-JAN-2012

---- Average Daily Traffic ----
for the Month

Percent Change
Month

---- Maximum Hour ----
Volume Hour DOW Day

--- Maximum Day ---
Volume DOW Day

7 Day Avg 5 Day Avg 7 Day / 5 Day Avg

Route Description Location Description County

2009 2010 2011 2009 2010

Rural Secondary Stations

RS 61	6.5 MILES S.W. OF HIAWATHA	BROWN	272	280	209	- 23.2	- 25.4	35	5-6 PM	WED	16	280	FRI	25	209	218	.96
RS 463	0.7 MILES S.W. OF BELOIT	MITCHELL	294	279	235	- 20.1	- 15.8	42	5-6 PM	FRI	11	340	FRI	11	235	251	.94
RS 272	2 MILES S. OF QUINTER	GOVE	432	401	398	- 7.9	- 0.7	62	5-6 PM	SAT	12	545	SAT	12	398	411	.97
RS 13	0.5 MILES N. OF BUSH CITY	ANDERSON	336	342	330	- 1.8	- 3.5	45	5-6 PM	WED	16	387	FRI	4	330	347	.95
RS 18	3 MILES E. OF PARSONS	LABETTE	1,866	1,842	1,780	- 4.6	- 3.4	207	4-5 PM	THU	10	2,130	FRI	18	1,780	1,920	.93
RS 303	0.8 MI. S. OF US-54 & K17 JCT. (MIDWAY)	KINGMAN	335		284	- 15.2		40	5-6 PM	WED	30	362	WED	30	284	292	.97
RS 251	6 MILES W. OF FORD	FORD	498	434	437	- 12.2	0.7	66	3-4 PM	SUN	27	645	WED	23	437	443	.99

Percent of Change for Rural Secondary Stations

- 8.9 - 5.3

Reservoir Stations

K 237	1.5 MILES N. OF JCT. US 24	JEFFERSON	1,045	1,193	969	- 7.3	- 18.8	127	5-6 PM	MON	21	1,166	SAT	5	969	994	.97
LOCAL ROAD	KANOPOLIS RESERVOIR N. OF DAM	ELLSWORTH	95	120	109	14.7	- 9.2					204	SAT	12	109	88	1.24
LOCAL ROAD	KANOPOLIS RESERVOIR S. OF DAM	ELLSWORTH	144	91	129	- 10.4	41.8					275	SAT	5	129	111	1.16
LOCAL ROAD	CEDAR BLUFF RESERVOIR N. OF DAM	TREGO	17	67	59	247.1	- 11.9					248	SUN	13	59	50	1.18

Percent of Change for Reservoir Stations

- 2.7 - 13.9

Kansas City Stations

US 69	0.8 MILES N. OF 167TH ST	JOHNSON	26,077	26,864	25,893	- 0.7	- 3.6	3,078	7-8 AM	MON	7	30,843	FRI	11	25,893	27,806	.93
135TH	135TH E. OF MUR-LEN	JOHNSON	33,545	34,806	33,804	0.8	- 2.9	3,512	5-6 PM	MON	14	40,889	FRI	11	33,804	35,427	.95
BLACKBOB	BLACKBOB RD. S. OF 139TH	JOHNSON	21,577	20,780	21,446	- 0.6	3.2	2,236	5-6 PM	THU	10	24,654	WED	23	21,446	21,869	.98
I 435	0.8 MILES S. OF I - 70	WYANDOTTE	59,046	58,699	58,317	- 1.2	- 0.7	6,806	5-6 PM	FRI	4	69,980	FRI	11	58,317	62,133	.94

Percent of Change for Kansas City Stations

- .6 - 1.2

Salina Stations

OHIO ST.	OHIO ST. N. OF WESTCHESTER DR.	SALINE	16,849	16,603													
----------	--------------------------------	--------	--------	--------	--	--	--	--	--	--	--	--	--	--	--	--	--

Percent of Change for Salina Stations

Topeka Stations

WANAMAHER	WANAMAHER RD. N. OF 33RD ST.	SHAWNEE	10,158	11,323													
45TH ST.	45TH ST. E. OF INDIANA	SHAWNEE	6,437	7,145	6,577	2.2	- 7.9	750	5-6 PM	TUE	1	7,783	FRI	4	6,577	6,841	.96
W. 10TH ST.	10TH STREET WEST OF WASHBURN	SHAWNEE	10,927	10,149													
N. TOPEKA	TOPEKA BLVD. NORTH OF PARAMORE ST.	SHAWNEE	18,640	17,286	17,808	- 4.5	3.0	2,020	4-5 PM	FRI	4	22,590	FRI	4	17,808	19,472	.91
I 70	I 70 E. OF MACVICAR ST.	SHAWNEE	45,384	45,399	42,617	- 6.1	- 6.1	4,835	4-5 PM	FRI	18	55,441	WED	23	42,617	45,731	.93
I 470	I 470 N.W. OF HUNTOON	SHAWNEE	33,439	35,046	30,934	- 7.5	- 11.7	3,513	5-6 PM	TUE	22	38,775	WED	23	30,934	33,185	.93
US 40	US 40 E. OF TECUMSEH RD.	SHAWNEE	4,889	4,659	4,541	- 7.1	- 2.5	601	5-6 PM	THU	3	5,597	FRI	4	4,541	4,992	.91
US 75	US 75 N. OF S.W. 57TH	SHAWNEE	14,782	14,256	13,647	- 7.7	- 4.3	1,634	7-8 AM	TUE	15	16,609	WED	23	13,647	14,850	.92

Percent of Change for Topeka Stations

- 6.0 - 6.2

Month of November, 2011

Sparse Matrix Model

Date: 09-JAN-2012

---- Average Daily Traffic ----			Percent Change		---- Maximum Hour ----			--- Maximum Day ---			7 Day	5 Day	7 Day /	
for the Month			Month		Volume	Hour	DOW	Day	Volume	DOW	Day	Avg	Avg	5 Day
2009	2010	2011	2009	2010										Avg

Route Description	Location Description	County
-------------------	----------------------	--------

Wichita Stations

K 96	K-96 E. OF GREENWICH RD.	SEDGWICK	22,970	22,466													
US 54	KELLOGG E. OF WEST ST.	SEDGWICK	81,907	84,163	83,364	1.8	- 0.9	8,731	5-6 PM	THU	17	102,367	FRI	4	83,364	90,818	.92
13TH ST.	13TH ST W. OF PINECREST	SEDGWICK	16,230	15,275	14,046	- 13.5	- 8.0	1,665	5-6 PM	TUE	15	16,917	TUE	15	14,046	15,265	.92
ROCK RD.	ROCK RD. S. OF CENTRAL AVE	SEDGWICK	31,793	32,372	31,044	- 2.4	- 4.1	3,256	12-1 PM	FRI	11	45,754	FRI	25	31,044	32,137	.97
21ST ST.	21ST ST E. OF WASHINGTON	SEDGWICK	13,386	8,342	11,979	- 10.5	43.6	1,304	4-5 PM	TUE	22	14,740	FRI	4	11,979	12,943	.93
HILLSIDE ST.	HILLSIDE S. OF 15TH ST	SEDGWICK	13,582	11,182													
I 235	I 235 S. OF MAPLE ST	SEDGWICK	48,041	47,655	44,473	- 7.4	- 6.7	4,840	5-6 PM	WED	9	52,992	FRI	4	44,473	48,450	.92
I 135	I-135 N. OF 21ST ST.	SEDGWICK		61,510	65,883		7.1	7,191	7-8 AM	MON	7	77,974	FRI	4	65,883	74,566	.88

Percent of Change for Wichita Stations

- 3.4 .6

NOTE: * Excluded from Percent Change Totals